

Cotuit Beach Info. All the beaches are off of main Street and all are an easy bike ride for adults and children that are in appropriate physical condition. All VEHICLES require a “Beach Sticker” (included)

The tidal beach directly in front of our home is great for fishing, walking along the waters edge, collecting crabs, building sand castles or launching the kayaks or the Boston Whaler you just rented. This is a typical Cape Cod-back bay tidal beach. It has nice flow in and out of Popponeset Bay and is very warm. The edge of the water is sandy for a few feet as you move away from the shore. (see below picture)

1-Ropes Beach

Here you will find the CMYC, a good cement boat ramp and a small swimming beach.

You can get sailing lessons from the CMYC and relax on the beach while the kids are on the sailboat.

2- Loop Beach (best for small kids & families since it is “guarded”)

On this beach you will find a bath house and Town Lifeguards.

This is a nice sandy beach and is a generous size. The beach slopes gently into the ocean.

The swimming area is roped off. The kids can get swimming lessons here.

The ice cream truck always stops by.

3-Main Street Beach. (also called Oregon Beach)

This beach is at the very end of Main Street, where the pavement ends. It is a long beach with private property on either end. This beach is not very populated. There are NO lifeguards.

4-Crocker Neck

A Town Beach INSIDE of the Crocker Neck Reservation. This is a small secluded beach and is great for the kids. Very gentle slope and sandy, turning into some mud on the bottom. It is adjacent to Mr. Krafts house (yes, that Kraft). Green Heads are possible depending on the season, year and wind conditions.

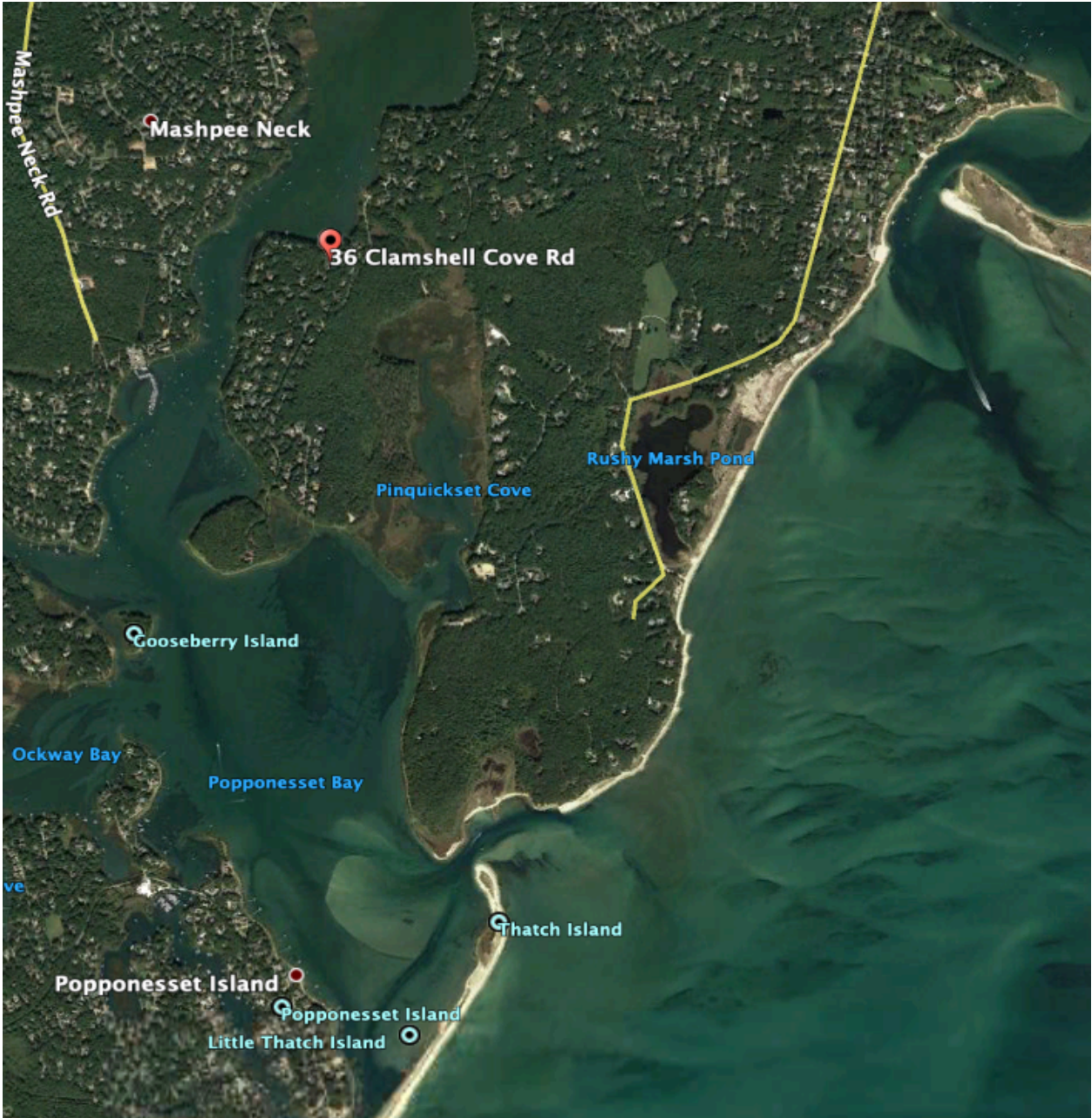
5-Meadow Point (owned by BLT, please see <http://blt.org/property-033>)

This is a secluded and VERY difficult beach to find (the Town, the neighbors and Mr Lloyd do NOT want you to know the location of this beach). It is across from The Spit and is comprised of a sandy beach sloping QUICKLY into the deep and fast moving water between Cotuit and Mashpee. The water is deep and cooler here. You will find a few people sunning and swimming on this beach. A few even launch their kayaks from here to go to the Spit. There is parking for TWO cars. PLACE a sign in your window that says “BLT Bird Watching”. Good luck finding this one...is is all the way down Main Street and onto the dirt road that says “no trespassing” then onto Bailey Road until you get to another No Trespassing sign (do not go past this sign)....stop..look LEFT for the parking space.....walk thru a chain and follow to the Ocean.

This is the tidal-beach directly in front of our home.



If you scroll down to the next picture, this gives you the birds eye view of where our home is located in the Bay and in relation to The Spit.







The Future is in Our Lands

Search this website...

[< Back to Protected Lands Catalog index](#)

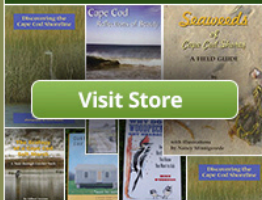
Quick Links

[Current Projects](#)

[Recent Projects](#)

[Events](#)

Barnstable Land Trust's Online Store



[Visit Store](#)

PROTECTED LANDS CATALOG

Property ID: BLT #033

Grantor: H. Gates Lloyd III

Acquisition Date: June 2, 1994

Acres: 28.88

Location: off Bailey Road, Cotuit

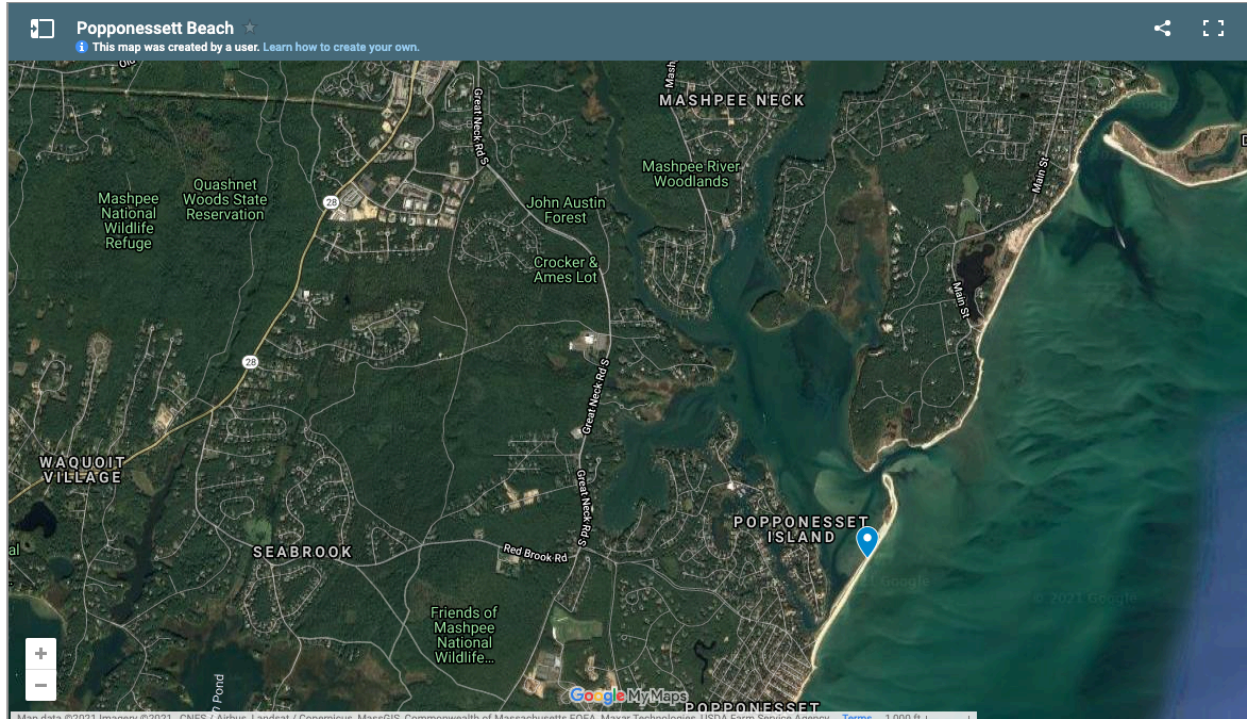
Photo: <http://www.bltr.org/catalog/photos/Lloyd.jpg>

Description: With the bequest of 28.88 acres of pine/oak woodland and salt marsh from the estate of H. Gates Lloyd III, one of the town's wildest points of beauty is preserved forever. The land is located on Meadow Point, the southernmost point in the Town of Barnstable, where a shallow channel entranceway leads into Popponneset Bay. The property is rich with wildlife.

Habitat: Pine and oak woodlands and salt marsh

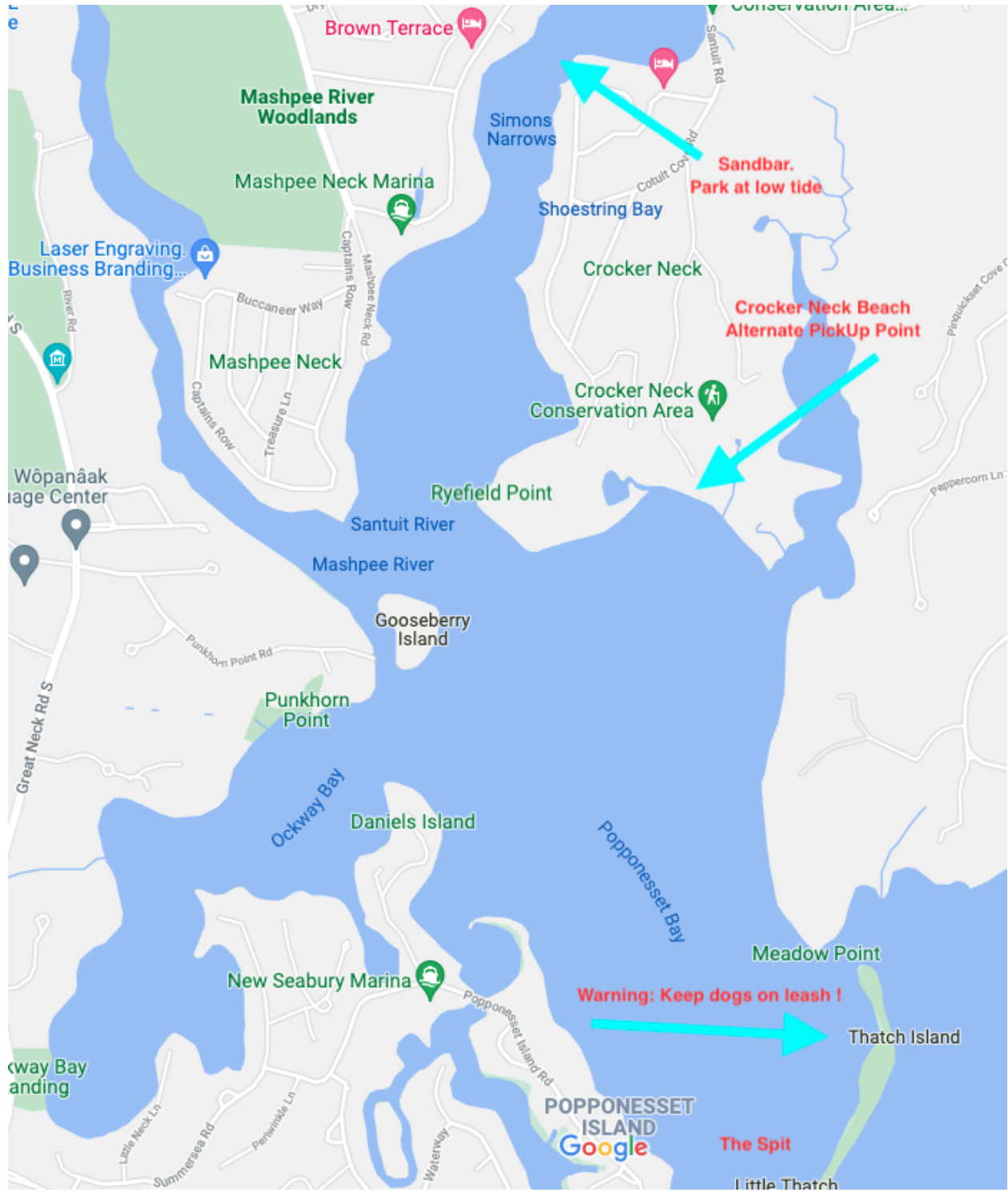
Parcel ID: Town of Barnstable Assessor's #003001





Our home is a short power boat ride from The Spit and a easy kayak ride if you are going with the tide. A person in appropriate physical condition should have no issues. If you have chosen to rent the pedal kayak, the trip is very quick. Be aware of fast moving watercraft in the center of the Bay. It is best to go along the shoreline.

To the east of South Cape Beach the shorefront becomes Popponesett Beach. A series of small jetties line the beach and fishing around any of them may yield bass or bluefish. For generations, Poppy has been known as the premier early season spot for the first stripers and bluefish of the year. The water for a mile off the beach is quite shallow and warms quickly, which is why this seems to be the place those fish show first. Farther east along the beach is Popponesett Spit, a long sandy extension that marks the end of Popponesett Bay. Walking to the end of the spit is worth the effort as a strong rip develops here during an outgoing tide and a 10-inch Hogy drifted out here can yield trophy size bass in the fall. The bay is a popular spot for fishing by boat or kayak. With the amount of boat traffic that passes through the narrow opening to the bay at the end of the spit, fishing well after dark or pre-dawn are best bets.



Brown Terrace

Mashpee River Woodlands

Mashpee Neck Marina

Laser Engraving Business Branding...

Mashpee Neck

Wôpanâak Iage Center

Ryefield Point

Santuit River

Mashpee River

Gooseberry Island

Punkhorn Point

Daniels Island

New Seabury Marina

Ockway Bay Landing

POPONESSET ISLAND Google

Meadow Point

Thatch Island

The Spit

Little Thatch

Sandbar. Park at low tide

Crocker Neck Beach Alternate PickUp Point

Warning: Keep dogs on leash!

Fishing Tips:

The best fishing is when the water is COLD. So, in May, June and the end of September you can fish just to the LEFT of our beach at the point. Cast out into the deeper water. Yes, we catch some great fish right here ! Though we are still getting Stripers in July and August.

During July and August you will need to travel to colder and deeper waters. Thus, Meadow Point will be your best bet along with the jetty at the end of Cross Street. You can also travel to the canal. The fishing is great all year long.

Try using bait/ squid on a regular hook. It works great.

You are responsible for following all the rules, regulations, laws and parking laws. There are too many for me to explain in depth. Sorry. Massachusetts DOES require a fishing license. You can get one online.

Boating Tips for those renting/ bringing a motor boat:

Here are all the details on how to enjoy our shallow Bay safely and not plug up the engine. I realize that you are knowledgeable when it comes to boats, so some please excuse me for over simplifying the task at hand.

Do not try to take the boat out one/two hours either side of low tide. Difficult navigation. By doing this you will suck up the silt, clog the impellers and thermostat and overheat the engine. The "muck" is deadly to the engine. Those one/two hours are best (just easier) spent at the pool.

Now, that is not to say that you can't come or go during that low tide. Here is the secret. I anchor my boat in front of Mike Lyles house on the sandbar. That way I can get in and out at very low tides. I usually place the boat there for just the couple of hours that are needed for the tide to adjust, then I go back and move it. Be aware of which way the tide is moving and how much slack the anchor line has. I sometimes set a second small anchor off the rear to just keep the boat in the deeper water.

Go down the beach stairs, make a LEFT towards the narrows. Walk three houses down. There is a "point" with a sandbar. This is also identified by the hawk's nest way up in the tree. Anchor off this sandbar for the time needed to move the boat (either seaward or home). The sandbar is quite obvious.

If you are out all day and the tides don't match your plans (or even come close), anchor at Crocker Neck or at our point just outside of the sandbar. Walk down the road. Very easy. We have done this many times. Yes, you can drive too.

Of course, you can try tilting the engine and adjust it as you come in or out from the beach. This works fine EXCEPT for one hour either side of dead low tide. You "may" get away with it between hour 4 and 5 DEPENDING on your boat, engine and total weight. Contrary to what many folks believe, NOBODY has any right to the water in front of their house. So don't feel like you are intruding. Also, YES you can walk along anyones beach to access the water (the millionaires HATE this).

Now for anchoring at SBH. One of the reasons I went to a smaller boat was to anchor it right at our house.

I nose in my boat to the beach and attach the front line (15feet) to the piling on the beach. I then set a second small anchor off the rear to keep the boats rear in the water and not let it drag or get pushed up on shore. The second small anchor is in the pool house. It is a black mushroom. Help yourself.

The channel out to "The Spit" is marked by the line of moorings, just up until you are South of the marina. Then they have regular channel markers. The YELLOW buoys mark the oyster beds !! Stay away from yellow markers.

The Harbormaster and Environmental Police and Clam Warden CAN issue you a speeding ticket !!! FYI. It is mostly the Harbormaster in our Bay. The no wake zones are clearly marked.

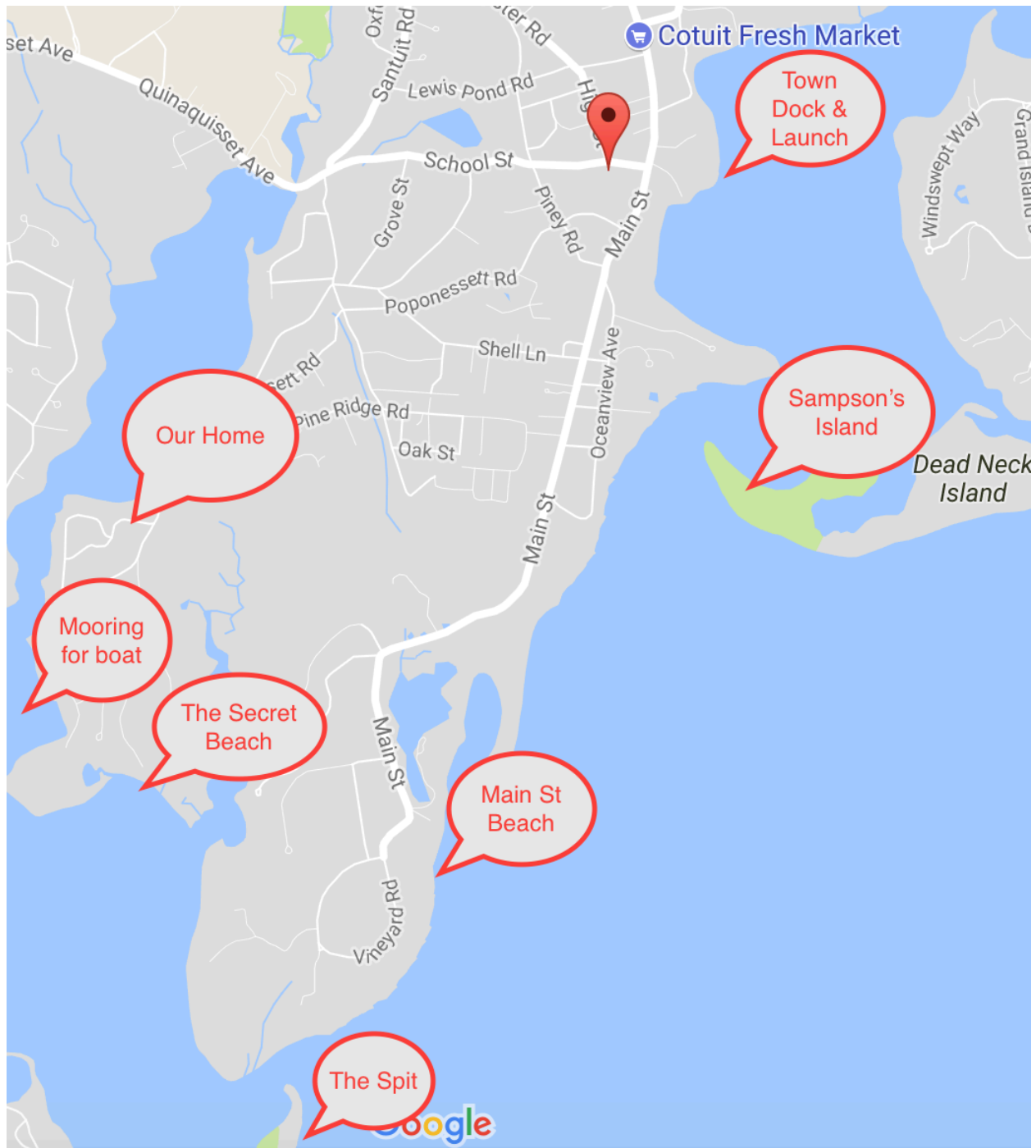
There is a HUGE underwater rock, southeast of the marina, near Ryefield point, clearly marked. Stay away. You can catch a glimpse of the Kraft house just around the corner, his boat is "Mudslide"

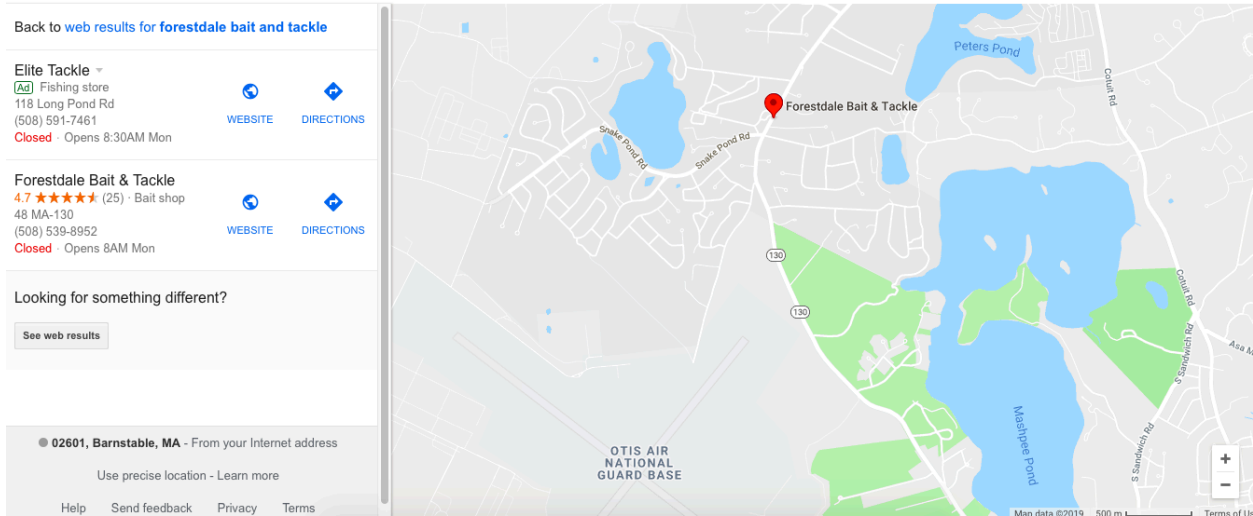
Ski and tube at the safe tide times ONLY. Occasionally there is flotsam and jetsam, be aware !! The best ski and tube place is South of Ryefield Point in the big Bay. We also ski at the North end of our Bay (be careful).

Best place to boat.... look at your charts. go to Sampson's Island and Waquoit Bay. Easy to get to and fun/ scenic.

Things to know:

- gas is at the marina around the corner
- there is a LARGE sandbar at the entrance to Popponessett Bay
- there is a shallow area outside of our bay to the East, be aware at low tide.
- no skiing in North Bay on the weekends.
- Cotuit has a Town Dock off Main Street.
- we love hanging out on Sampsons island and enjoying lunch and beers.
- beach your boat on the North side of the Spit ONLY, you will see where.





I, Mark, purchased the bait and tackle business when the former owner decided to leave. My intention was to add a fish market. I owned the Cape Codder Seafood Market in West Yarmouth for 10 years and wanted to start one close to home in Sandwich. Our location provides easy access from both Rte 6 and Rte 28 and is centrally located among some of the best fishing waters in New England.