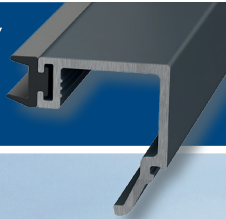


FEATURING SMART'S NEW
**QUICK
GLAZE** BEAD



Introducing... **ALITHERM 400**

Combining outstanding value and quality, with class-leading performance and security, the new Alitherm 400 system provides a range of stylish casement windows and single and double doors.

The system is perfect for a wide variety of projects, including both new build and refurbishment, residential and light commercial applications and is proudly made in Britain by Smart.

Alitherm 400's design incorporates Smart's innovative polyamide thermal break technology, which creates a barrier between the cold air outside and

warm air inside, significantly reducing thermal transmittance and enhancing the system's overall U-value. The system is also fully compliant with changes to Document L of the Building Regulations, is rigorously tested to PAS 24:2016 as standard and exceeds the requirements for weather resistance and security performance.

The image illustrates suitable applications for Alitherm 400 and is not binding in detail or specification.

DESIGNING PRODUCT SOLUTIONS FOR

- ◆ Building Regulations Compliant
Fully compliant with changes to Document L of the building Regulations
- ◆ Smart Quick-Glaze Bead
Featuring integrated gasket and 'tap-in' design for easier fabrication and faster installation
- ◆ PAS 24:2016 Approved
Enhanced security for aluminium windows and doors
- ◆ Unrivalled Choice of Colour
In addition to our 5 colour collections, we can colour match any RAL colour
- ◆ Suitable for Residential and Light Commercial Properties



TOP HUNG

TOP HUNG



SIDE HUNG



Alitherm 400 WINDOWS

The Alitherm 400 window is the first thermally broken aluminium system to feature Smart's pioneering co-extruded glazing gasket. This means the beads are supplied with the glazing gasket post-extruded into the profile. This enable the Quick-Glaze beads to be simply tapped in on site, significantly reducing fabrication and installation time.

Available with a flush or stepped profile, the slim lines of Alitherm 400 provide excellent weather and thermal performance, as well as the security assurance provided by PAS24 accreditation. While the flush, flat face option is suitable for off-set, face-mounted espagnolette locks, the chamfered design features a eurogroove, to enable in-line espagnolette locking mechanisms to be used.

FEATURES AND SPECIFICATIONS

- ◆ Building Regulations Compliant
Fully complies with changes to Document L of the Building Regulations
- ◆ Quick-Glaze Bead
- ◆ Excellent Thermal Performance
An extended polyamide thermal break for enhanced thermal performance
- ◆ Suitable for All Lock Types
Suitable for off-set, face-mounted espagnolette lock mechanisms
- ◆ PAS 24:2016 Approved
Enhanced security for aluminium windows and doors



*Results show best result possible dependant on specification.

Alitherm 400 DOORS

Alitherm 400 doors perfectly complement the window range, with the same stylish lines and providing the same ease of fabrication and installation.

Available as open-in or open-out, single or double doors, the system provides excellent weather and thermal performance, as well as the security assurance provided by PAS 24:2016 accreditation. Security options include a choice of key wind, lift lever or slam lock multipoint locks.

Suitable for both residential and commercial applications, Alitherm 400 can also be combined with Smart's Designer Door Panels and the company's range of standard door furniture (including colour matched lever handles, and the Quantum range of stainless steel hardware), to create elegant and contemporary entrance doors.



FEATURES AND SPECIFICATIONS

- ◆ Building Regulations Compliant
Complies fully with changes to Document L of the Building Regulations
- ◆ Quick-Glaze Bead
- ◆ Available as Open-in or Open-out, Single or Double Doors
- ◆ PAS 24:2016 Approved
Enhanced security for aluminium windows and doors
- ◆ Security Options
A choice of either key wind or lift lever and slam lock or multipoint locks
- ◆ Smart Designer Door Panels
We offer an extensive range of panels that fit the Alitherm 400 door
- ◆ Excellent Thermal Performance
An extended polyamide thermal break for enhanced thermal performance



*Results show best result possible dependant on specification.





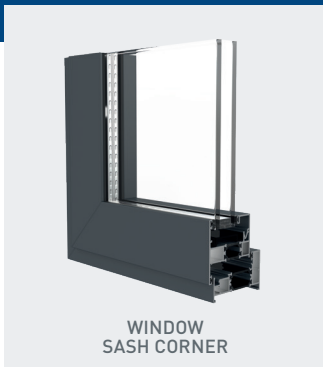
FEATURES SMART'S NEW **QUICK GLAZE BEAD**

For installers, Alitherm 400's new, Quick-Glaze Bead is simply tapped in on site with the gasket already in place (rather than beading followed by inserting wedge gaskets), making the installation and glazing process faster, more straightforward and more cost effective.

Smart Quick-Glaze Bead is available in Naturals colours White (WP), Black (BL) and Anthracite Grey (KL005).

ALITHERM 400 WINDOWS

ALITHERM 400 DOORS



Window Type	Maximum Width (mm)	Maximum Height (mm)	Frame Depth (mm)	Maximum Perimeter (mm)	Glazing Units	Security Standard	Typical U Value ¹	WER ²	Air Permeability Classification	Water Tightness Classification	Resistance to Wind Classification
Sash dimensions for windows with approved sash profiles:											
Side Hung	864	1400	70	-	24, 28, 32, 36, 40, 45	PAS 24:2016	1.4 W/m ² K	Band A	Class 4	E1200	AE2400
Top Hung	1400	1400	70	-	24, 28, 32, 36, 40, 45	PAS 24:2016	1.4 W/m ² K	Band A	Class 4	E1200	AE2400
Fixed	2100	2100	70	42	24, 28, 32, 36, 40, 45	PAS 24:2016	1.4 W/m ² K	Band A	Class 4	E1200	AE2400

[For sizes outside these parameters, contact the Smart Technical Support team]

Typical Values different glass, profiles and door configurations will vary U Value and Window Energy Rating

1. U Value based on opener next to fixed 1230 x 1480 using glass Centre Pane 1.0

2. WER based on opener next to fixed 1230 x 1480 using glass Centre Pane 1.2 and g value 0.74

Door Type	Maximum Width (mm)	Maximum Height (mm)	Frame Depth (mm)	Glazing Units	Security Standard	Typical U Value ¹	DSER ³	Air Permeability Classification	Water Tightness Classification	Resistance to Wind Classification
Sash dimensions for doors with approved sash profiles:										
Single Door Open In	1000	2400	70	24, 28, 32, 36 & 40	PAS 24:2016	1.4W/m ² K <small>1.2 W/m²K (w/ Designer Panel)</small>	Band B	Class 2 300Pa	Class 5A 200Pa	Class BE 2400Pa
Double Door Open In	2000	2400	70	24, 28, 32, 36 & 40	PAS 24:2016	1.4W/m ² K <small>1.2 W/m²K (w/ Designer Panel)</small>	Band B	Class 2 300Pa	Class 5A 200Pa	Class BE 2400Pa
Single Door Open Out	1000	2400	70	24, 28, 32, 36 & 40	PAS 24:2016	1.4W/m ² K <small>1.2 W/m²K (w/ Designer Panel)</small>	Band B	Class 2 300Pa	Class E 1050Pa	Class AE 2400Pa
Double Door Open Out	2000	2400	70	24, 28, 32, 36 & 40	PAS 24:2016	1.4W/m ² K <small>1.2 W/m²K (w/ Designer Panel)</small>	Band B	Class 2 300Pa	Class E 1050Pa	Class AE 2400Pa

[For sizes outside these parameters, contact the Smart Technical Support team]

3. U Value and Door Set Energy Rating for single door based on 1230 x 2180 using glass Centre Pane 1.0

4. U Value for double door based on 2000 x 2180 using glass Centre Pane 1.0

5. Door Set Energy Rating for double doors based on 2000 x 2180 using glass Centre Pane 1.2 and g value 0.7

6. Weather-tightness based on lift-lever locking

The images, drawings and data shown in this brochure are for illustrative purposes only and are not binding in detail, colour or specification. We reserve the right to make changes to the product specification as technical developments dictate and without prior notice. We recommend that the user ensures that they are satisfied the product meets their requirements prior to purchase. ©Smart Systems Ltd 2023.