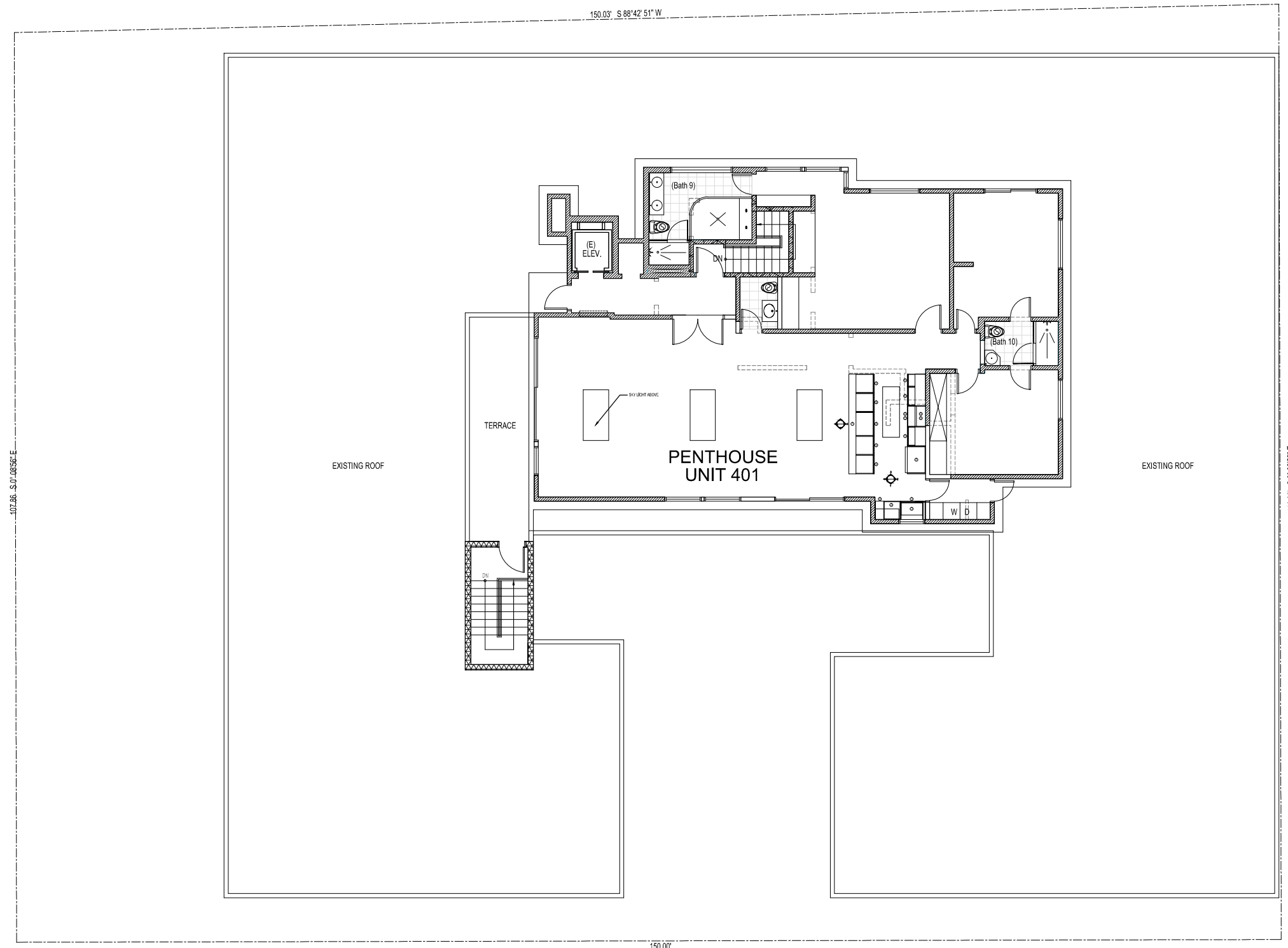


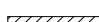
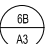
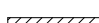
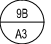

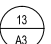





150.03' S 88°42' 51" W



WALL LEGEND:

-  RESTORE EXISTING DAMAGED WALLS ACCORDING TO THE FOLLOWING DETAILS:
-   EXTERIOR WALLS (1-HR FIRE RATED):
EXISTING 1" CEMENT PLASTER OVER PAPER BACKED METAL LATH ON THE EXTERIOR SIDE TO REMAIN
PROVIDE ONE LAYER OF 5/8" TYPE "X" GYP. BD. ON THE INTERIOR SIDE OF EXISTING 2 X STUDS @ 16" O.C. WHERE INTERIOR FINISH HAS BEEN REMOVED.
PROVIDE R-13 INSULATION IN STUD SPACE
-   INTERIOR PARTITIONS (1-HR FIRE RATED THROUGHOUT):
PROVIDE ONE LAYER OF 5/8" TYPE "X" GYP. BD. EACH SIDE OF EXISTING 2 X STUDS @ 16" O.C. WHERE INTERIOR FINISH HAS BEEN REMOVED.
PROVIDE R-13 INSULATION IN PLUMBING WALL STUD SPACE
-   ALL VERTICAL AND INTERIOR STAIR SHAFT WALLS (2-HR FIRE RATED):
PROVIDE TWO LAYERS OF 5/8" TYPE "X" GYP. BD. EACH SIDE OF EXISTING 2X STUDS @ 16" O.C. WHERE INTERIOR FINISH HAS BEEN REMOVED.
-   ALL FLOOR / CEILING ASSEMBLIES (1-HR FIRE RATED):
PROVIDE ONE LAYER OF 5/8" TYPE "X" GYP. BD. UNDER EXISTING FLOOR JOISTS WHERE INTERIOR CEILING FINISH HAS BEEN REMOVED.

- | | |
|----------------------------------------------------|---------------------------|
| KITCHEN CABINET | KITCHEN APPLIANCES |
| 1: UPPER CABINET | A: DISHWASHER |
| 2: DOUBLE DOOR SINK CABINET | B: HOOD |
| 3: CORNER CABINET | C: COOK TOP |
| 4: BROOM CLOSET | D: MICROWAVE |
| 5: PANTRY | E: OVEN |
| 6: ROLL-OUT STORAGE BASKET | F: REFRIGERATOR |
| 7: SINK CABINET WITH TRASH BIN AND ROLL-OUT BASKET | G: SINK |
| 8: BAR TOP | |
| 9: DRAWERS | |

1 EXISTING PENTHOUSE RESTORATION PLAN
SCALE 1/8"=1'-0"