



BRUSH GUIDE & CARE

HUMAYRA HASSAN MAKEUP ARTIST

 @HH_MAKEUPARTIST

 HUMAYRAHASSAN.COM



WELCOME TO YOUR NEW PROFESSIONAL MAKEUP BRUSH SET!



With 15 high quality brushes, this set includes every single brush you'll need to complete any Full-Face makeup look of your choice! I wanted to create something which made it easier for women to have the right tools and no longer have to struggle to shop around for the correct brush. With my set, every brush has been makeup artist approved and carefully selected to have a clear and specific use. To make it even simpler I've designed a Brush Guide especially for you, detailing what each one is for and how best to use them. Plus Care Instructions to help you look after your new purchase, so they become your best beauty investment. I hope you enjoy your new brushes and they give you the Freedom to express your individual beauty with the right tools in hand. With love and as always...

Stay Beautiful. Stay You!
Humayra x



HOW TO CARE FOR YOUR NEW BRUSHES

Upon receiving your brushes and before their first use, please ensure to wash and dry them using the guidelines below. This is to get rid of any loose hairs or fibres, which is a natural part of the manufacturing process.

BRUSH CARE INSTRUCTIONS

Look after your brushes and they will be your greatest beauty investment! As makeup artists our tools are essential which is why caring for them correctly can mean your brushes last for years.

Deep Clean Once A Month



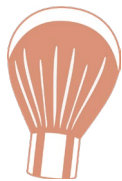
Use warm water and gentle baby shampoo to cleanse and wash. Make sure the water does not go higher or above the metal ferrule to avoid damage to the brush handle.

Quick Clean After Every Use



Use makeup or baby wipes to remove excess product off the brush. This avoids damage to the synthetic hairs by preventing product build up (especially creams and liquids) which when left alone can dry and stick to the brush making it harder to remove.

Air Dry On A Flat Surface



Allow your brushes to air dry by laying them on a flat surface. Do not use any heat or appliance to dry your brushes quicker.

Store Your Brushes



Store your brushes in the rose gold makeup bag provided in order to keep them in shape and dust free.



BRUSH GUIDE



THE FLAT FOUNDATION

Use to apply cream or liquid foundation, primers, tinted moisturisers or BB Creams. Best for achieving a medium to full coverage.



THE BUFFER

Use to blend cream or liquid foundation, tinted moisturisers or BB creams. The flat bristles make it easier to buff product into the skin creating an airbrushed and flawless finish. Can also be used to blend cream or liquid contour.



THE SMALL POWDER

Use to apply setting powder on small areas of the face including under eyes, around the nose, forehead and chin. Designed to "set" and hold foundation in place, preventing makeup from rubbing off and reducing shine for a long-lasting, flawless finish.



THE LARGE POWDER

Use to dust a fine layer of setting powder all over the face. Can also be used to brush away any eyeshadow fallout or blend away harsh lines of contour or blush.



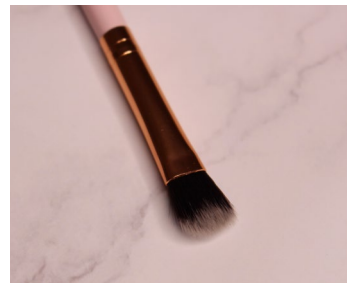
THE SLANTED
CONTOUR & BLUSH

Use for both powder contour, blusher or bronzer application.



THE FAN HIGHLIGHTER

Best used in a quick, light motion to apply a beautiful wash of highlight and add glow to the face.



THE FLAT CONCEALER

Use to apply and blend liquid or cream concealer. The soft duo fibre bristles help to buff product and create a smooth finish under the eyes. Can also be used to apply any colour correcting products.



THE "BIG FLUFFY"
EYESHADOW BLENDER

Use to apply and blend eyeshadow in the crease, suitable for a larger eye shape. Can also be used "clean up" eyeshadow mistakes and soften any harsh lines or edges of eye makeup.



BRUSH GUIDE



THE FLAT EYESHADOW
APPLICATOR

Use to apply any powder or cream eyeshadow on the eyelid. Best used with any shimmery, sparkly or glitter pigment eyeshadows.



THE "MEDIUM FLUFFY"
EYESHADOW BLENDER

Use to apply and blend eyeshadow in the crease, suitable for a smaller or hooded eye shape. Can also be used to add shade to the outer corners of the eyes and fade colours into crease.



THE "BABY FLUFFY"
EYESHADOW BLENDER

Use to add and blend darker eyeshadow to the outer corners of the eyes. Can also be kept as a spare blending brush to clean up any eyeshadow mistakes.



THE PENCIL

Use to apply highlight on the inner corner of the eyes and brow bone. Can also be used with a dark eyeshadow to deepen the outer corners of the eyes when creating a more glamorous eye look.



THE MEDIUM ANGLE

Use to smudge eyeshadow underneath and define lower lash line or smudge eyeliner on the top lash line. Can also be used to shape and fill in eyebrows with any powder product.



THE SMALL ANGLE

Use with gel or liquid eyeliner to create the perfect wing. The small angled shape allows for extra control along the lash line. Can also be used with gel or cream products to line and define eyebrows by creating thin hair strokes.



THE THIN EYELINER

Use with liquid or gel eyeliner to apply a thin line along the eyelid, for a simple and defined eyeliner look.





FOLLOW ME & STAY IN TOUCH ON SOCIAL!

Don't forget to tag me using your brushes on Instagram!

 **@hh_makeupartist**



Youtube.com/hh_makeupartist

Subscribe to my YouTube for free tips, tricks and tutorials on how to use brushes and create beautiful makeup looks!