

Dear Property Owner / Resident / Renter:

August 6, 2018

As a property owner or resident in the Marcy-Holmes, Southeast Como, or Prospect Park neighborhood, you are aware that unsightly piles of garbage appear this time of year as many renters move in or out. **If we find excess amounts of garbage at your property from August 20 through September 14, the Division of Solid Waste & Recycling will clean up the garbage and bill you accordingly. You will not receive an additional warning.**

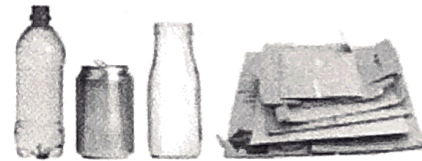
We encourage you to donate usable items, recycle as many materials as possible, and properly manage excess waste. Please refer to the enclosed insert on ways to reduce waste and properly dispose of excess materials.

- **Donate:** Bring usable furniture, textiles and household goods to the UMN ReUse Warehouse (883 29th Ave SE) Monday – Friday 8 a.m. – 3 p.m. For more information on donation and the annual Free Store, visit: reuse.umn.edu

If you are unable to bring items in for donation, usable items will be collected from your collection point August 20 – 31 only. Place items in durable plastic bags or cardboard boxes. Clearly label all bags, boxes, and furniture for donation. Keep these items separate from large piles of garbage. These items may not be picked up on your regular collection day.

**Pack &
Give
Back**

- **Recycle:** The blue recycling cart is for **food and beverage containers, paper and cardboard only.** Flatten extra cardboard and bundle with string or twine and neatly stack next to the recycling cart. Extra recycling can be placed next to the cart in paper bags or open box for collection. For more information visit: minneapolismn.gov/recycling



- **Organics:** The green cart is for food-scrap, non-recyclable and food-soiled paper, compostable plastics and other compostable materials only. Yard waste and packaged food items are not accepted. For more information visit: minneapolismn.gov/organics

There are many options for disposing of excess household garbage. Some options include:

- **Garbage Drop-Off:** The utility bill payer for the property can get up to six vouchers per year to dispose of excess garbage at our South Transfer Station at no additional cost. For more information call Solid Waste & Recycling at 612-673-2917 or visit minneapolismn.gov/solid-waste/vouchers.
- **Garbage Clean up at the Curb or in the Alley:** City crews will pick up excessive garbage for a fee. Rates are \$181/hour, with a minimum charge of \$75. This fee includes pickup and disposal.

Your cooperation is greatly appreciated in helping to keep your neighborhood clean. If you have any questions or concerns about this matter, please call the Division of Solid Waste & Recycling at 612-673-2917.

Sincerely,



David A. Herberholz, Director
Division of Solid Waste & Recycling
Enclosure