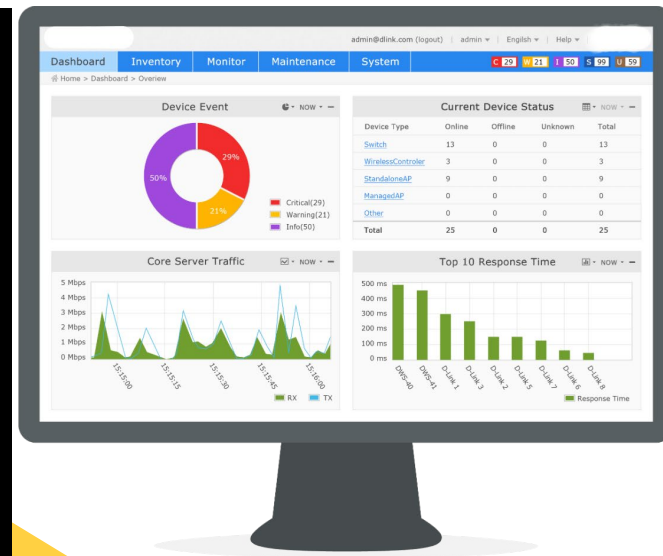




Product Datasheet

NimSu

InfraKnit NMS provides Ease of Use, Modular Integrated Management approach to cater the demanding IT environments. It provides the FCAPS functionalities with COTS product. It provides the Unified NMS experience to IT operators whether Fault & Performance, Server or Network Monitoring, Storage or Firewall Monitoring, Server & Network Automation, Server & Network Configuration Management, Syslog & Event Management, Data Analytics, Helpdesk & Ticketing & SLA Management, all are provided as part of NMS modules.



About Us

InfraKnit stands out as a distinguished Infrastructure Management & Monitoring Software Company, renowned for its exceptional services.

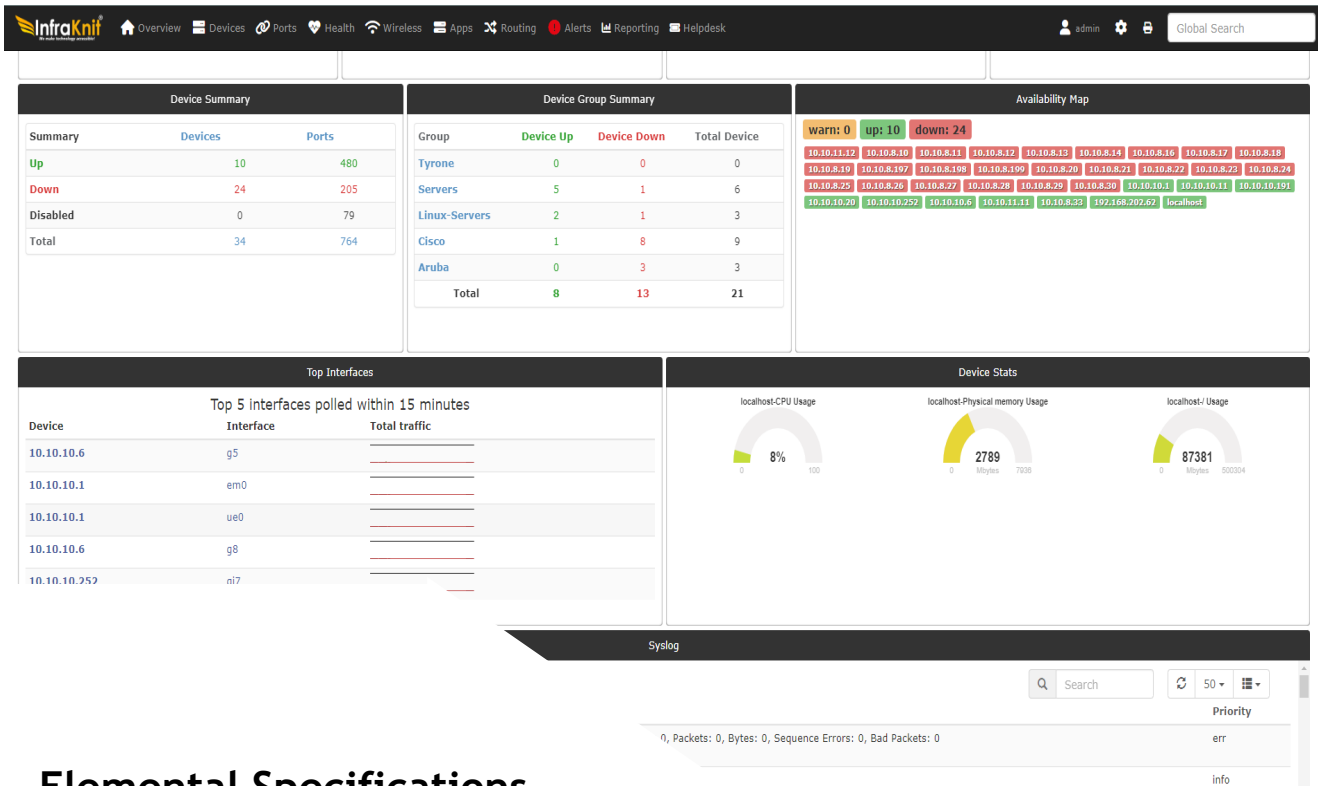
As an Infrastructure management software firm, InfraKnit places a strong emphasis on delivering adaptable solutions that cater to businesses of all sizes, without regard to their financial constraints.

InfraKnit specializes in creating all-encompassing Infrastructure management software solutions, with the primary objective of simplifying the tasks of your engineering teams. Our expertly crafted Infrastructure domain products encompass a wide array of IT necessities, ranging from network and device management to security and service desk software. We take pride in uniting the realm of IT under one integrated and comprehensive approach, offering the means to tailor and optimize your IT operations.



InfraKnit Technologies Pvt. Ltd.
Pacific Business Park,
B234, 2nd Floor, Sahibabad,
Ghaziabad, U.P. 201005

InfraKnit[®]
We make technology accessible!
<https://infraknit.com>



NMS (Network Monitoring System)

Network Monitoring System is the core to the IT systems whether it is of Standalone or Distributive Network. Always there is a critical need to review and monitor the entire elements for its continuous operations.

The operational teams need real-time data from multiple sources and do an intelligent co-relation of incidents and impact on the infrastructure. To cater this InfraKnit developed NimSu (NMS) to bring Ease of Management for entire IT infrastructure.

Elemental Specifications

- ❖ Physical Host & Server Monitoring
- ❖ Network Monitoring
- ❖ Traffic Analysis
- ❖ Application Monitoring
- ❖ Database Monitoring
- ❖ Virtual Monitoring
- ❖ Storage Monitoring
- ❖ OSS/BSS Layer Monitoring
- ❖ Cloud Monitoring
- ❖ Log Monitoring

business@infraknit.com
<https://infraknit.com>
<https://fb.me/infraknit>
<https://twitter.com/infraknit>
<https://www.linkedin.com/company/infraknit>

Key Features

- Web based secured Unified Dashboard
- Auto-discovery of network devices with Topology
- Fault Management
- Performance Management
- Configuration Management
- SLA & SLT Management
- Root Cause Analysis
- Incident Management
- Report builder, Notification Manager (e-Mail, SMS, IVR)
- Interactive Charts & Graphs

InfraKnit Certifications

- CMMI LEVEL 3
- IATF 16949:2016
- ISO/IEC 27000:2018
- CIS Benchmark
- ITIL V4
- ISO 9001-2015
- ISO 14001-2015
- ISO 27001-2018



Detailed Features

- In-Depth Network Topology View
- Dependency Mapping
- Centralized log aggregation and analysis
- Single Dashboard with All-in-one monitoring for network / IP devices, server, and application
- Complete Network Flow Automation
- Link up/down Monitoring
- SLA Performance Monitors such a jitter, latency, packet loss
- NMS supports Class-based (QOS) Quality Of Service
- Provides inventory view of L3 VPNs, detailed views for an L3 VPN
- Proactive Troubleshooting, Reduce Downtime
- Provide early warning on performance issues capacity management and augmentation
- Drill-down any sort of data
- Tool supports MIB-II and enterprise MIB for performance management
- Supports both IPv4 and IPv6 protocols
- RCA with context to quickly identify issues
- Support for Virtual Private Wire Service (VPWS) and Virtual Private LAN Service (VPLS)
- Fully Customization Script Support
- Notification via email, SMS, & provision to interface
- Centralized and distributed deployment that easily scales with multiple remote polars
- Remote Polling Engines for different site-to-site monitoring from one single location
- Scalable as per the clients need
- Different Management modules for different user

Plug-in-based architecture with REST API

- Multi-vendor access & support
- Web-based intuitive and user-friendly GUI for NMS/EMS, Help Desk
- Unified console for network management, flow monitoring, and log monitoring
- Customized Dashboards for all users
- Single platform Correlate, integrate, and visualize all sorts of data monitoring
- Network Device Monitoring for Routers, switches & firewalls
- Network Monitoring Metric: CPU, Memory, Disk, Temperature, Fan speed, RTT, Packet loss, latency, and various others.
- Server Monitoring Metric: Request per second (RPS), Uptime, Error, Thread count, ART/PRT
- DB Monitors Metric: Memory, Cache, Sessions, Buffer, Locks, Pages, Query Detail, Transaction Detail, etc.
- Supports Fault, Configuration, Accounting, Performance, and Security (FCAPS)
- Support Traps and Alarms
- Supports SNMP traps and syslog
- Alert stream
- Advanced Alarm filters and correlation
- Alarm/Event Suppression
- Supports multi-tenancy
- File integrity management
- NMS Diagnostic Tools
- Remedy actions

- Network Topology View
- Logical Relationship Topology view
- Dependency Mapping Overview
- Centralized log aggregation and analysis
- All-in-one monitoring for network, server, and application - Single Dashboard
- Network Flow Automation
- Link up/down (real-time as well as periodic)
- LAN/WAN Interface Monitor

- Enforce Runbook Policies for Auto-remediation
- Role Based Access for Security and Better Control
- On-premise and Cloud deployment
- Multiple concurrent Admin web sessions
- Predefined as well as customized reports and dashboards
- Auto ticketing for alarms/incidents
- Integration with AD and LDAP
- NMS Integration with ITSM/ServiceDesk/Helpdesk
- Smart Rack Monitoring
- Integration with non-IT devices viz. sensors, cctv, access control, PAHU, etc.
- High Availability