

# Nanticoke Valley Historical Society

2016 Newsletter # 1 March *edited by Phil Childs*



1850



1830



1840



1845



## TABLE OF CONTENTS 2016 Issue # 1 3/1

- Cover Page: Table of Contents, Post Cards
- 2 Jan Bowers Dedication of Museum & Officers.
- 3. What's Coming? Plan on It!
- 4. President's Page, In Memory,
- 5. Jingle Bells
- 6. Nanticoke Post Office
- 7. Editorial on Town Comprehensive Plan
- 8. Peddlers
- 9. Path Through History Weekend,  
*Where in the Town of Maine Am I?*
- 10. Join Us!

Before Hallmark! Many people mailed illustrated post cards to celebrate holidays. "US stamps began in 1847 with a five cent stamp and postal rates dropped in 1851 to one cent. The cost of the stamp used depended on how far the letter was going. US post cards were developed in 1873. "The Post Office was the only establishment allowed



**MUSEUM SITES**

- JANET BOWERS SITE
- SCHOOL HOUSE # 4
- NORTON WAGON SHOPS
- PITCHER'S MILL
- HAMLET of MAINE

NVHS Museum Sites  
located at 13 Nanticoke Road  
Corner of Route 26 & Nanticoke Road  
P.O. Box 75  
Maine NY 13802

<http://nanticokevalleyhistoricalsociety.com/>  
<https://www.facebook.com/NanticokeValleyHistoricalSociety/>

to print postcards, and it held its monopoly until May 19, 1898, when Congress passed the Private Mailing Card Act, which allowed private publishers and printers to produce postcards. In 1908, more than 677 million postcards were mailed." The card above is from April 1908 and cost one cent to mail. Special thanks to Sue Lisk for sharing this card. <https://en.wikipedia.org/wiki/Postcard>

## REMEMBERING JAN BOWERS

During the Nanticoke Valley Historical Society's final meeting in 2015, the organization's body of members voted to name its original museum site, the "Jan W. Bowers Museum." Janet Bowers is being honored, in part, for her role as the organization's first curator. It was she who consulted with a group of professionals to install the museum's original displays, some as they remain to date.

Jan was born in Maine, NY in 1935 to Dr. and Mrs. Clement Bowers and she grew up in their family home at Bowers Corner. Jan's affiliation with the historical society and its museum started when she visited the Hamlet of Maine during its 125th Anniversary celebration in 1973. At that time, she discovered that the Nanticoke Valley's fledgling Historical Society had corroborated with the Town of Maine's local government, churches, service organizations and much of its population to relive the Hamlet's rural past during a weekend festival held in May that year. It was estimated that over 10,000 people celebrated the town's history during the event, and Jan Bowers was delighted that Maine successfully honored its past with so much community spirit and cooperation. Partly because of her personal interest in history and her desire to contribute to the formation of a historical society, Jan moved to Maine, NY and began investing her efforts to help the organization succeed.

NVHS' current membership will formally honor Ms. Bowers by renaming the original Nanticoke Road Museum Site the "*Jan W. Bowers Museum*" during a dedication ceremony which will occur at the close of the New York Heritage "Path Through History" celebration. *The dedication ceremony will take place at the Museum between the hours of 4 and 6 on Saturday, June 18.* Wine, cheese and appetizers will be offered to those attending.

To further acquaint readers with Janet Bowers' life and accomplishments, the NVHS newsletter will share portions of her life's story periodically. Also a biographical publication will be compiled from researched articles and information received from writing contributors. **We encourage everyone who is acquainted with Janet Bowers to write emails and letters about her and address them to: NVHS Charter Committee, c/o Carla Sullivan ([carla1202@gmail.com](mailto:carla1202@gmail.com)) or PO Box 205, Maine NY 13802.** Carla Sullivan Past President



### Officers

President:	Philip M. Childs	862-3405
Vice President:	Alice Hopkins	862-3635
Secretary:	Carla Sullivan	862-5385
Treasurer:	Sandy Halliday	862-3470
Museum Curator	Sue Lisk	862-9705
Mill Curator	Tom Kotasek	862-3636

### The Board of Trustees\*

2016: John Haggerty, Diane Fleenor, Betty Welch

2017: Nancy Berry, Sandy Rozek, Pat Stacconi

2018: Lucas Kaczynski, Rita McKeon, Anita Shipway

\* New positions are voted on each year. The term of a trustee is three years. This provides for an ever changing but ongoing board coverage.

## Programs/Trips/Picnic and Fundraisers : 2016

- Subject to change As of today these are the scheduled event but we hope to add other events to our calendar. Emails and phone calls will be made to keep you up to date or call Alice Hopkins at 862-.3635 or Phil Childs 862 3405 if you have a question.

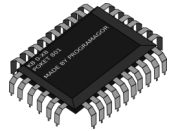
**March 10 Thursday** Comprehensive Plan Maine Memorial School Gymnasium at 7 pm See editorial on Page 7.

- March 21 Monday** Spring Picnic **6 PM** at the Museum Bring a dish to share

**April 18 Monday** Maine's Fire Department presented by David Silver-nail We will be meeting at the *McGregor Street* Fire station at 7 PM.

Support the MFD on March 20 Fire Dept. BBQ at 11 am.

**May 16 Mondays** meeting will be at the *Center for Technology & Innovation aka Techworks* We will meet at the museum at 6:30 to car-pool to the museum or meet us there for our 7 pm tour.



**May 30 Monday** Smokey Legends BBQ 11 -2 plus raffle baskets, bake sale and a **NAEOS event\*** (new and exciting opportunity sale) aka rummage sale. All the above is at the one room school house.

Also available for tours will be our: 1845 One Room School House and 1830 Pitcher's Grist Mill and Jan Bowers Museum



**June 18 Saturday** PATH Through History Weekend. Bowers Exhibits and Power Point 1-4 then 4-6 Bowers Dedication with reception.\* see page 4 for details



**June 19 Sunday** Art Gallery Opening 1-4 with reception The Maine Influence Nancy Braches pottery & Ken Weir oils see page 4 for more info Also available for tours will be our: 1 -4 1845 One Room School House and 1830 Pitcher's Grist Mill and Jan Bowers Museum

**June 20 Monday 7 pm** Bowers Family Power Point encore

- July 18 Monday** meeting we have a few ideas but nothing finalized yet.

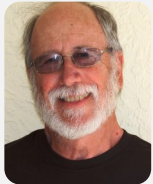
**July 21 Friday Evening**

**July 22 Saturday**

**July 23 Sunday**

Mega event planned including house tours, theatrical productions, vendors, seasonal sales (not a warm month seasonal sale). Work in progress but it's gonna be GREAT!!!





Thank you for allowing me introduce myself..." not the story told in the song by the Rolling stones" but rather a bit of the story of me. I'm a retired science educator, having taught in Union-Endicott schools for 37 years. My wife Jo and I have been residents of the Hamlet of Maine since 1982 where we raised our three children along with vegetables in our large backyard garden. This year I will be the President of the Nanticoke Valley Historical Society having finished my three year term as trustee. We joined the NVHS when we moved here and have enjoyed being associated with it these last thirty plus years. My other "job" is that of newsletter editor which I have done since the fall of 2014.

I am exceedingly pleased to be working with Alice Hopkins, our Vice President , along with our talented board of trustees, curators and membership. Besides our great monthly programs special events will occur. On June 18 and 19 we again will be involved in the NYS and Broome County "***Path Through History Weekend.***" event. That **Saturday June 18th**, at the museum, we will host a program about the Bowers Family including special exhibits. This is also the time that we will be dedicating our museum on Nanticoke Road, to Jan Bowers . This will be at 1 –4 PM followed at 4-6 PM by the official dedication ceremony along with serving of light refreshments. On **Sunday June 19th** , we will continue to use our future living room area as an art gallery, where we will host two area artists. The show,s title is "*The Maine Influence*" and features: Ken Weir's stunning oils and Nancy Braches' hand crafted pottery . Both artists will show how the "*Rural Inspiration*" is reflected in their artwork; an artist reception will occur during the opening which is between 1– 4 PM.



Nancy Braches  
Hilltop Pottery  
540 Cherry Valley Hill  
Road Maine NY  
13802  
607 692—4704  
[www. Hilltoppottery.com](http://www.hilltoppottery.com)  
<https://www.facebook.com/>

See More of Ken  
Weir's Oils at  
[www.cooperativegalle  
ry.com/artists](http://www.cooperativegallery.com/artists)



Next year is the fortieth anniversary of our permanent NYS Charter as NVHS. We are planning numerous events next spring and early summer to commemorate this.

**A few Goals for this upcoming year:**

**Increase Membership, Bring back** School Children for museum visitation (reinstating of field trips. dropped by M-E a few years ago due to budget concerns), **Work** with the Town of Maine to continue and improve our reciprocal relationship. Phil Childs

**IN MEMORY** December 21, 2015, during the Sunday School hour, *Merle Ward*, age 96, left this world to join his many family and friends in Heaven! He passed away peacefully with family at his side, his last words, typical of his life, "See you in the morning for coffee."



"Jingle Bells" is one of the best-known and commonly sung American wintertime songs in the world. It was written by James Lord Pierpont (1822–1893) and published under the title "One Horse Open Sleigh" in the autumn of 1857. Even though it is now associated with the Christmas and holiday season, it was actually originally written for American Thanksgiving. "[https://en.wikipedia.org/wiki/Jingle\\_Bells](https://en.wikipedia.org/wiki/Jingle_Bells)

Sleigh and cutter are words that are often used interchangeably, but there is a difference. The photo below is a cutter, it has only one seat for two people and one horse. A sleigh has a front and back seat and can be drawn by more than one horse. Check The Country Wagon Produce front porch for antique sleigh.

This year Punxsutawney Phil predicted an early spring and that snowy streets like the one below might not happen. (It is 2.12 as I write this.) This 1908 photo is in front of 2590 Main St., the Dudley home. It shows a typical winter scene, even with automobiles available most still used sleighs in the winter.

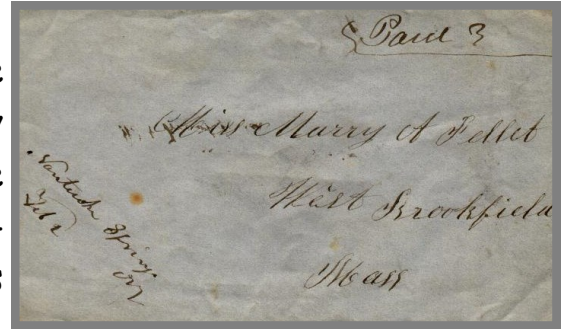
The image shows a musical score for the song "Jingle Bells" in G major and 2/4 time. The lyrics are: "Dash-ing through the snow, In a one-horse o- pen sleigh, O'er the fields we go, Laugh- ing all the way. Bells on bob- tail ring, Ma- king spi- rits bright, What fun it is to ride and sing a sleigh- ing song to- night. O, Jin- gle bells, Jin- gle bells, Jin- gle all the way, O what fun it is to ride in a one horse o- pen sleigh, O, Jin- gle bells, Jin- gle bells, Jin- gle all the way. O what fun it is to ride in a one horse o- pen sleigh." The score consists of five staves of music with lyrics written below the notes.



On Jan 16, 2016 The Press and Sun Bulletin featured an article by Gerald Smith, our Broome County Historian, who talked about some really small post offices. He discussed both Windsor and Nanticoke locations. I would like to add a few thoughts of my own on the *Nanticoke* office. This post office is "special" to us since its postal boxes are housed in our museum. Next time you enter the meeting room look to your left; sitting on top of a table is the entire Nanticoke 1954 post office.

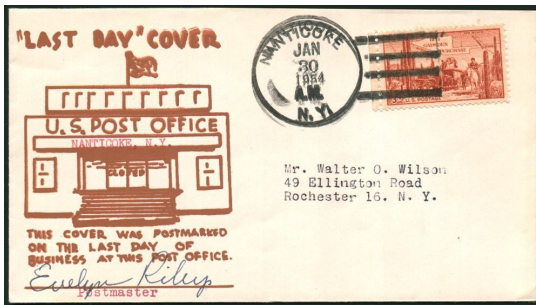


The Nanticoke Post Office started as Nanticoke Springs on February 10, 1831. (see letter) On July 25, 1861, the Nanticoke Springs Post Office became Lamb's Corners then May 24, 1892 it was the Nanticoke Post Office. The Nanticoke Post Office was discontinued on January 31, 1954, (see photo) service was then provided by the Lisle Post Office.



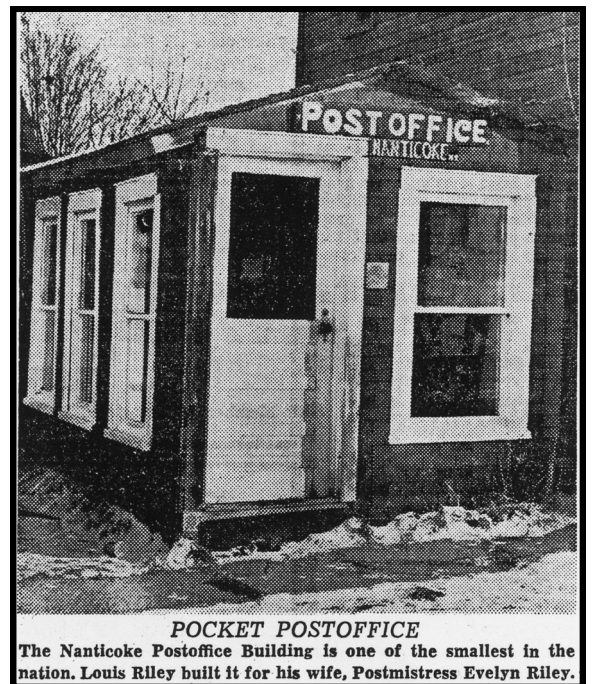
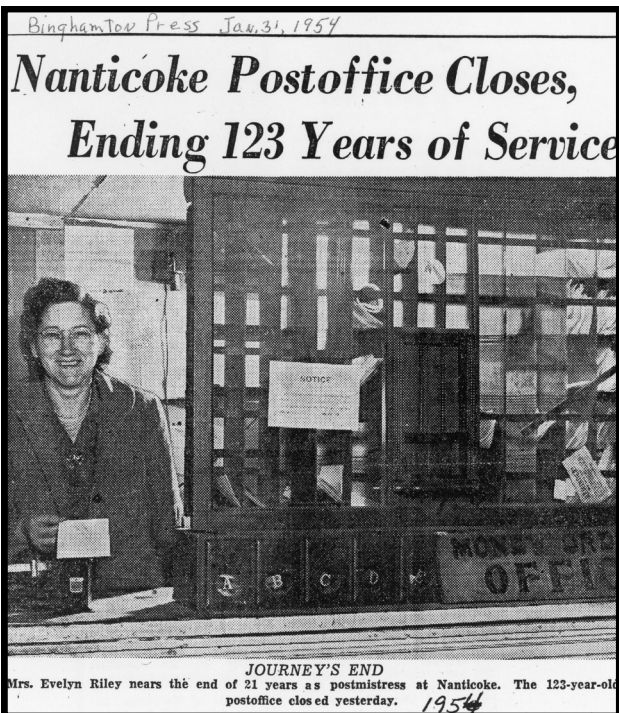
Nanticoke Springs Letter 1850's

You might ask what happened to Nanticoke's old zip code address and the answer is: Zip codes first were tried in 1960 and today's system was put in place on July 1, 1963. The last day of issue stamps were cancelled by the post mistress, Evelyn Riley. If interested in the history of Broome County Postal Service I recommend:



<http://www.broome-county-postal-history.com/>

Thanks to Betty Welch for these historic clippings.



## An Editorial concerning the New Comprehensive Plan

You Recently received a letter from the town of Maine which started out: “Dear Town of Maine resident . “ *The Town of Maine is updating the Comprehensive Plan which was drafted in 2006 and approved by the town board in 2008. We would like to make sure that your voice is heard. A comprehensive plan is a document drafted by members of the town that represents the strategic goals of the majority of the town. The document covers: town demographics, land use, zoning, housing, commercial development, farming interests, water use and quality, and most important the goals that shape what residents want their town to be in the future.* “ part of a letter from the Comprehensive Plan Committee January 2016

I hope that all of you are aware that this process is now “in the works”.....I recommend that you go to the Maine Memorial School on **Thursday March 10 at 7 PM** . At that event the committee will be collecting information from the residents as to what is important to them and what they may wish to change in the town. If you can not make it there data forms will be available at the clerk’s office to fill out and submit. The town web site <http://townofmaine.org> will also be used in collecting information from residents. This site has the old plan on it for you to review. All of the collected information will be used to develop a survey of questions which will be distributed later in the year. The survey responses will be used to craft a *new revised plan* which will be used as a guideline to the town board in making changes that the majority of the town wants.

So why is the historical society involved? Many personal reasons come to my mind, but I will share at least two with you. **First** the Comprehensive Plan committee says that “*Once the inputs have all been analyzed we will draft the goals that come out of this process. and we hope to work with community organizations and the town of Maine to develop implementation teams.* “ *I hope that the society and the town continue to form a team which is beneficial to both. It is this reciprocal relationship that brought us the 125th anniversary and 150th celebrations that the society and other organizations brought forth great pride in our town.* **Secondly** Part of the NVHS mission statement and goals state “To develop and preserve the history and the historic sites in the Nanticoke Valley and its environs in the Town of Maine, Nanticoke and Union Center, in Broome County. To collect, preserve and exhibit such things dealing with the area.; To assist and coordinate efforts with other organizations such as historical societies, special groups, schools and branches of government that may share in this mission.” I hope that many like minded individuals who value history and preservation add comments to the Comprehensive Plan which makes sure the town follows along a pathway which parallels our goals and mission statement. This input could form an important nucleus of ideas which are then firmly implanted in the new plan.

I hope you tell your friends to be involved and together we can add suggestions which will guide the town over the next decades. Then our town would truly be **Proud of its Past.** Phil Childs

**SCHOOL and GROUP TOURS AVAILABLE**

**BY CALLING 607 - 862 - 9705**

How about a visit to our Home Town  
Museum? Call the Curator!

Headline “ Amazon Developing Drones which will bring your purchases to your front door.” ..... One hundred years ago that was the norm!!!



“Before World War I many peddlers in the Nanticoke Valley sold their wares by horse and wagon. Ray Lewis sold meat from the Maine Butcher Shop. Louis Drazen carried men’s clothing. George Phipps was a tin peddler and Mr. Treadwell from Glen Aubrey brought groceries and cloth in the Grand Union Tea Company Wagon. These sellers brought goods directly to the farms, saving customers a trip to town.”



**The Country Wagon Wagon–**  
Newest Old addition to the front porch  
at Country Wagon Produce.  
Thanks Andrea

If you wish to get in contact with Phil Childs (editor of the newsletter ) contact him via email [achild233@aol.com](mailto:achild233@aol.com) or phone 862 3405 . Get your newsletter via email, it's colorful!



**WHAT a WEEKEND.....June 18 and June 19**

**PATH Through History :**

**Saturday: 1– 4 PM**

***Bowers Corners: The cross roads community that produced entrepreneurs artists, botanists and philanthropists.***

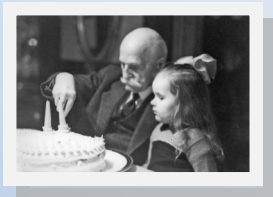
This event will mark the historical society's dedication of its museum to *Janet Bowers*. Museum displays will document the impact the Bowers Family has had on the community and beyond. A power point, incorporating archival photographs, will present the genealogy of the Family from 1752 to 2004. Exhibits which feature photographs and personal items will reach out from past decades to help us understand the professional and personal lives of this family.

**4—6 PM**

**Dedication Ceremony and Reception**

A MUST EVENT TO ATTEND!

1940 Lamont & Janet



**Sunday: June 19th**

**1 PM—4 PM**

**Gallery Opening & Reception**

**“THE MAINE INFLUENCE”**

This year we are fortunate to have two local artists:

Meet these two talents and see how the rural nature of our region has impacted their works.

**Ken Weir** Oil Paintings and  
**Nancy Braches**—Pottery.

FACT: The NVHS started in 1973 and was officially chartered by New York State in 1977. Next year will be our

**40th** anniversary.

*Where in the Town of Maine Am I?* This early 1900's photo is taken facing north. Can you see the horse and wagon approaching? The line of trees in the background is still there. Do you know where this was taken. Hint A.H. has the answer! The May issue will reveal the location.



Nanticoke Valley Historical Society,

PO Box 75 , Maine, NY 13802

March 2016 Issue # 1

---

---

---

---

Please mail returns to: Nanticoke Valley Historical Society, Attn: Treasurer, PO Box 75 , Maine, NY 13802

**Name:** \_\_\_\_\_ **Date** \_\_\_\_\_

**Mailing Address:** \_\_\_\_\_  
\_\_\_\_\_  
\_\_\_\_\_

**City/State/zip:** \_\_\_\_\_

**Phone: (Home)** \_\_\_\_\_ **(Work)** \_\_\_\_\_

**E-Mail Address:** \_\_\_\_\_

**Newsletter:** Mailed or Electronic

**Dues:** \_\_\_\_\_ \$20.00 Individual \_\_\_\_\_ \$35.00 Family \_\_\_\_\_ \$15 Senior/Student \_\_\_\_\_ \$50 Patron \_\_\_\_\_ \$100 Business \_\_\_\_\_ Other \_\_\_\_\_