



Katie Hobbs
Governor

Office of the State Forester

Arizona Department of Forestry and Fire Management



Tom Torres
State Forester

Arizona Healthy Forest Initiative

Task Order: 24HF01-RED1

The Arizona Department of Forestry and Fire Management (DFFM) is requesting bids from eligible contractors for conducting the forest improvement and hazardous fuels reduction work described below. Funds for this Task Order are available through the Arizona Healthy Forest Initiative.

Project Name: Red Lakes Phase 1 – Internal Hand Crews

Project Size: Approximately 97 acres

Period of Performance: 7/17/2023 to 1/31/2024

Eligibility: This request is open for contractors currently (per Request Date, below) registered in the Arizona State Procurement System for the Forest Management and Wildlands Fuels Reduction Services.

DFFM Contact: Rich Van Demark, rvandemark@dffm.az.gov, (928) 460-9311
Travis Aldrich, taldrich@dffm.az.gov, (480) 604-4999

Offer Due By: 7/14/2023 at 5:00PM Arizona Time

PROJECT DESCRIPTION

GENERAL REQUIREMENTS

Purpose: Reduce the risk of catastrophic, stand-replacing wildfire in the wildland and urban interface (WUI) by decreasing stand densities, ladder fuels, and crown fuel continuity. Create conditions conducive to the reintroduction of low severity fire.

Location: Within Sec 22, 28, T23N R2E; Gila-Salt River Principal Meridian.

Vegetation: Current stands within the Red Lakes project area are stocked with ponderosa (*Pinus ponderosa*), pinyon pine (*Pinus edulis*), juniper (*Juniperus spp.*), and brush. Regeneration consists of various Juniper species, pinyon pine, and ponderosa pine. Ground cover is dominated by native blue gramma (*Bouteloua gracilis*) grasses. Shrub species include Rubber Rabbitbrush (*Ericameria nauseosa*), sage (*Artemisia spp.*), (Cliffs rose (*Purshia Mexicana*) and currant (*Ribes spp.*).

Duty ♦ Respect ♦ Integrity

Physical Features: Elevation is relatively flat ranging from approximately 6500 – 6700 ft. Aspect is variable but mostly southwest. Slopes are generally between 0 and 10%. Northern aspects near the southern end of block 1 support higher densities of large pinyon pine. The project area has multiple power lines running through multiple treatment units. The area shares boundaries with private property and the Grand Canyon rail line runs north to south through treatment block 2.

Description of Work: On approximately 97 acres of Arizona State Trust Land implement a hand thinning. The operational area is divided into three cutting units, Leave trees will not be marked. Leave trees will be designated by diameter and species and spacing.

Required Equipment: Preferred operational equipment is hand crews utilizing hand tools assisted by wheeled crew vehicles and a wood chipper capable of treating woody material > 4" in diameter.

2 chain buffer for Cutting Units: Block 1, and 2,

5 chain buffer for Block 3 (Approximately 97 acres)

A buffer for cutting units 1, 2, and 3 (see PAM) is being treated to create a highly defensible space, greatly reducing the risk of catastrophic fire in the sensitive wildland urban interface.

Blocks 1, 2, and 3: Within the first 2 chains of the buffer that meet the project boundary, trees will be lopped and woody material less than 4" in diameter will be chipped and broadcast spread to an average depth of 3 inches over the buffer area.

Block 3: For the remaining 3 chains of the block 3 buffer, trees will be cut and woody material greater than 4 ft. in height will be lopped and scattered to promote burning activities set to take place 1-2 years following planned treatment.

When selecting leave trees the disruption of continuous canopy cover and creating space between retention trees is a priority. Utilize the spacing guideline below to help direct cutter selection of leave trees.

Desired Leave Trees

Leave trees will be retained in the following order of precedence: ponderosa > pinyon > juniper

- Leave all ponderosa pine, regardless of tree form, health, or vigor.
- Leave mature pinyon pine, > 6 inches Diameter Breast Height (DBH) exhibiting the best health, form, and vigor to the desired spacing for leave trees described below.
- Leave Juniper species greater than 20 inches at diameter root collar (DRC) single stem or 30 inches DRC multi-stem to the desired spacing for leave trees described below.

Cut Trees

- Hand cut and scatter Juniper less than 20" DRC single stem or 30" multi-stem to the desired spacing described below.
- Hand cut and scatter non-dominate Pinion < 6" DBH to the desired spacing described below.
- Hand cut all regeneration of pinyon and juniper
- Where possible prune live branches from retention trees within one chain of project boundary to a height of 4' above ground level.
 - Do **NOT** prune trees if doing so will reduce the structural integrity or health of the tree.
 - When cutting limbs, retain the branch collar to allow for proper healing.

Spacing for Leave Trees

- Space leave trees off of mandatory leave trees. Remaining leave trees will be left at irregular, variable spacing ranging from 60 – 150 feet (average of 100 feet measured bole to bole).
- Leave the best available trees (tallest trees displaying the best tree form and largest crowns).
- If an area > than 1/2 acre in size lacks any mandatory leave trees, then leave one Pinyon or Juniper at the desired, variable spacing.

Vegetation Screens (Approximately 3.3 acres)

Four vegetation screens will be excluded from the treatment of Block 1. Only two vegetation screens will fall within or directly border the 2-chain buffer within block 1. The vegetation screens are to be put in place for three primary purposes. Screens will be flagged in pink flagging to indicate boundary of screening and edge of treatment. Trees felled near the vegetation screens should be felled in a manner that allows the tree to fall away from the screen.

- 1) The screens will act as wildlife corridors and refuse locations helping to limit the impacts to wildlife within the treatment area.
- 2) The vegetation screens will help to limit visual and noise pollution impacts to private property owners from vehicles traveling along SR-64 following completion of treatment to block 1.

Ground Conditions: Slopes are generally between 0% and 10%, the ground is generally free of large rock out cropping ideal for machine treatment.

Access to Work Site: To access the project area travel north from Williams, AZ on SR-64 for approximately 7 miles to E Hoctor Rd. Exit SR-64 to the west to access Cutting Units: Block 2, NW, and SW sections. Exit SR-64 to the east to access cutting unit: Block 1. Roads accessing individual units are found running parallel to SR-64 (see attached PAM).

Project Layout: Unit boundaries are not marked on the ground. Roads accessing private property will serve as unit boundaries where applicable. Some boundaries are virtual. Maps showing unit boundaries will be provided in Avenza compatible formats.

Work hours: Excessive noise, such as the operation of a chainsaw, chipper, or other heavy machinery should not begin until after 7:00 AM and be completed before 9:00 PM to reduce impacts to residents.

Mitigation Measures:

Power lines

Power lines cross several units. Use extreme caution when treating around power lines.

Grand Canyon Railroad:

The railway for the Grand Canyon railroad transects Cutting Unit: Block 2. No operational debris is permitted to interact with the railway in any form. Equipment is only allowed to cross the railway at road intersections.

Wildlife

No Wildlife restrictions.

Soils

Follow BMPs to prevent soil compaction and displacement (BPM004241: Wildland Fuels Reduction and Operations Management). Limit operational activities to periods of dry or frozen soil conditions.

Non-Native and Invasive Weeds

Use Best Management Practices to prevent the spread of noxious or invasive weeds. Contractors will clean their equipment inside and out of all mud and plant debris. Prior to entering State Trust Lands equipment will be inspected, and approved or denied by DFFM personnel prior to entry into the project area.

Cultural

Cultural sites in and near treatment units will be flagged with pink and white flagging and/or painted with white bands. Cultural sites will not be treated. Ground disturbing activities are prohibited within cultural sites. Vehicles and equipment are not permitted within cultural sites.

Silviculture

All silvicultural prescriptions will be reviewed with the designated Crew leader/Supervisor prior to beginning operations in each unit.

Hand Thinning Operations

Trees and brush will be completely removed from the stump. Maximum stump height is 6 inches. Where selective hand thinning has taken place, lop and scatter slash to a height of 4 feet

or less. In areas designated to receive chip and broadcast treatment all chipped material will be spread to an average depth of 3 inches.

Appropriate traffic signage (e.g. heavy equipment, caution, Thinning operation, etc...) will be posted on E Hocht Rd, N CG RR Frontage Rd, N 8 Mile Blvd and others as needed to alert the public of ongoing operations.

Recreation

For public safety, camping will be prohibited within active treatment areas. Operational activities will not take place on the following holiday weekends: Memorial Day, Fourth of July, and Labor Day.

Sequencing and Scheduling:

Request Date: 7/10/2023

Site Visit: 7/11/2023

Offer Due By: 7/14/2023

Award Confirmation: 7/14/2023

Pre-Work Conference: 7/17/2024

Start Date: 7/17/2023

End Date: 1/31/2024

Final Inspection: 2/9/2024

Contractor Obligations: The contractor is obligated to **ALL** terms and conditions described in the Statewide Contract for Forest Management and Wildlands Fuels Reduction Services.

Response to Task Order: A response to this Task Order shall be documented by completing the Task Order Response form attached to this document and emailing the completed form to the *DFFM Contact* listed above on/before the *Response Due By* date. The Task Order Response Form will then be sent to Rich Van Demark, DFFM Forestry Operations Manager, for approval.

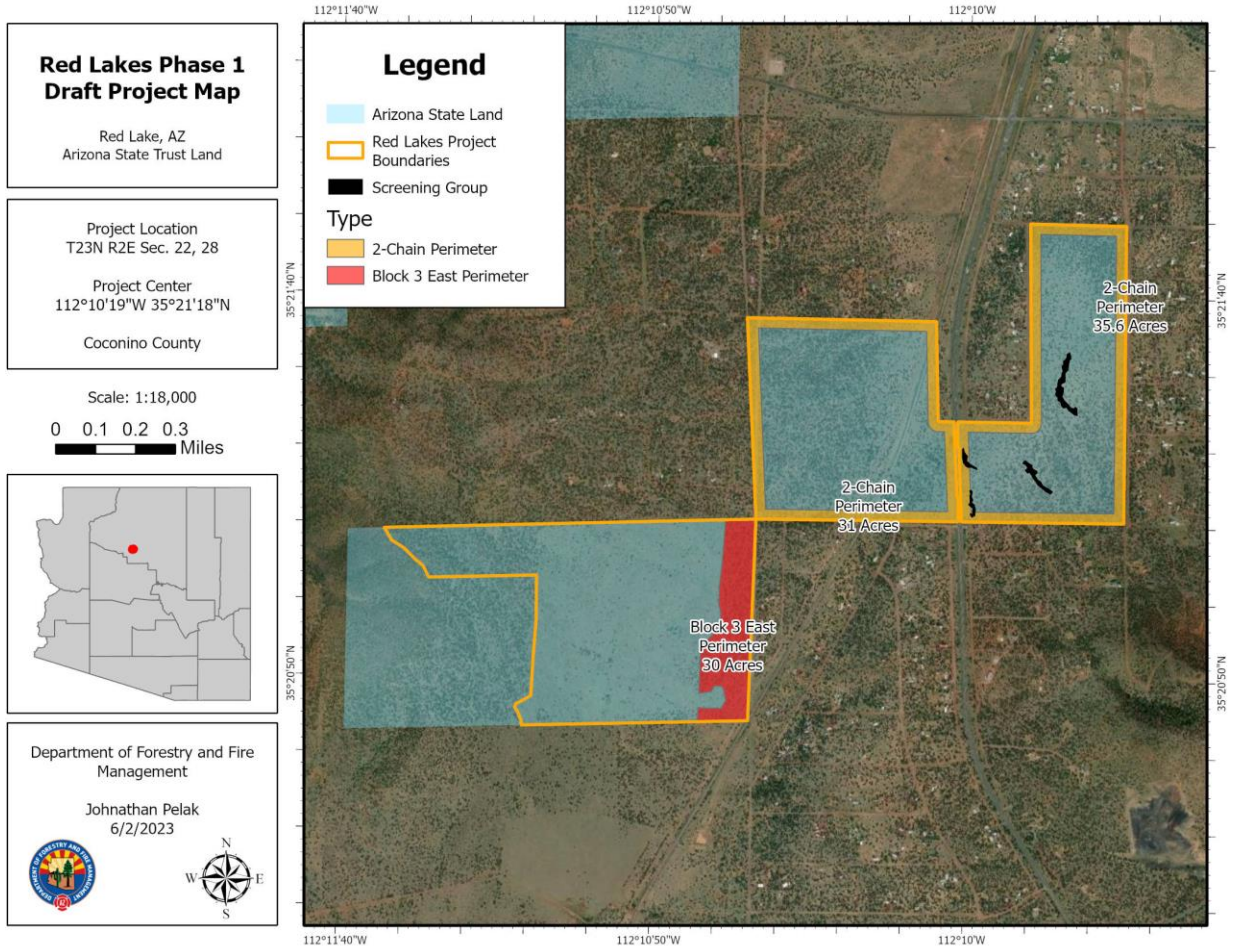


Figure 1: Project Area Map (PAM)

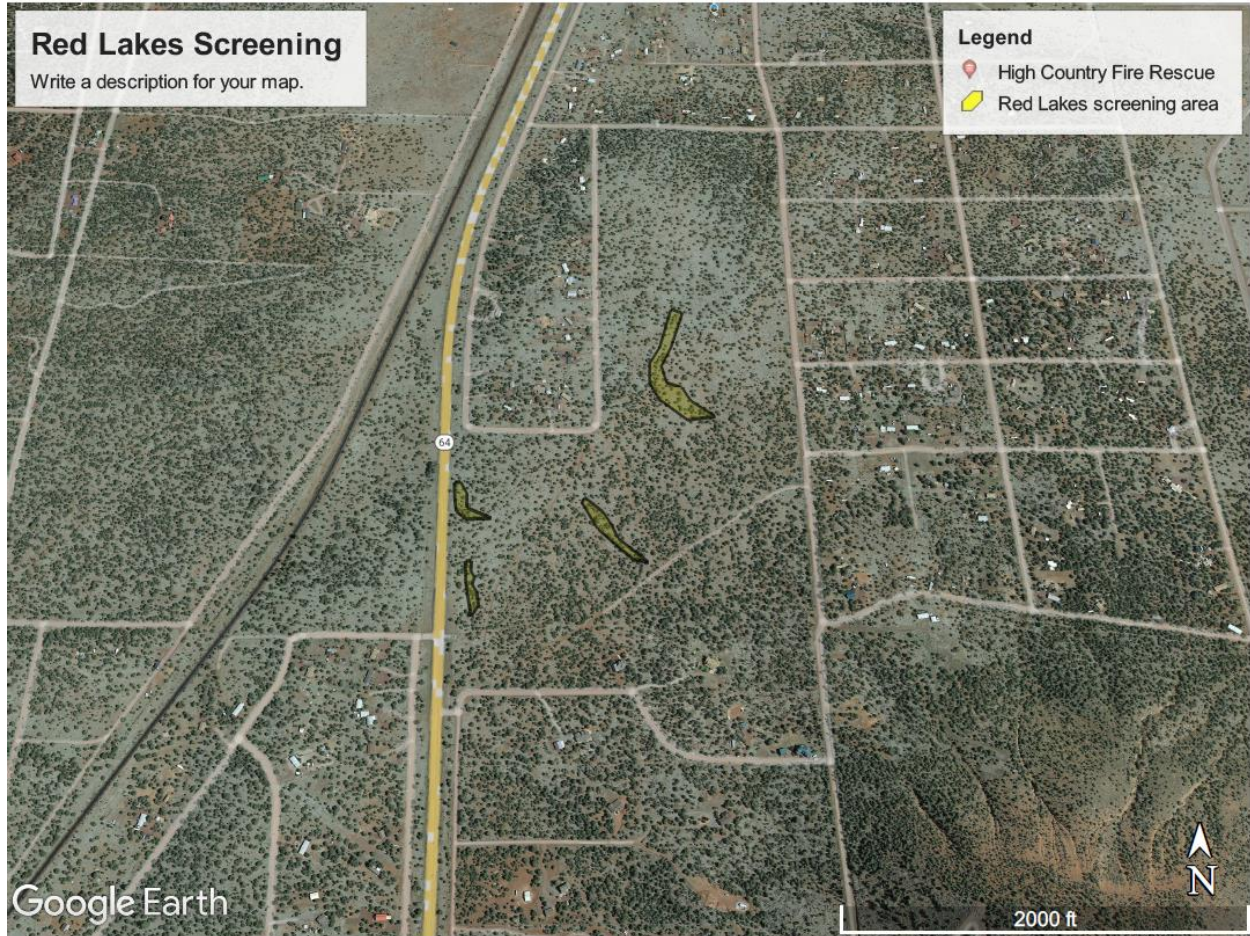


Figure 2: Vegetation Screens Map