

# THE AI WORKFORCE STRATEGIST

## A CHESS GRANDMASTER FOR THE AI ERA

Integrating artificial intelligence (AI) into the workplace can feel like a high-stakes game of chess.

Every move matters, and the stakes are high—not just for productivity but also for workforce morale and well-being.

Enter the AI Workforce Strategist: a leader who, like a chess grandmaster, orchestrates moves with foresight and precision to ensure employees adapt, thrive, and avoid burnout in an AI-driven world.



# OPENING MOVES: SETTING THE FOUNDATION FOR SUCCESS

In chess, the opening is critical—it sets the tone for the game. Similarly, an AI Workforce Strategist begins by laying a solid foundation for AI integration.

This includes preparing the workforce, aligning goals, and ensuring a smooth transition.



01.

## THE STRATEGIST'S OPENING MOVES:

### Assess the Board:

Before implementing AI, evaluate the organization's readiness. Identify skill gaps, potential resistance, and opportunities for growth.



### Communicate the Vision:

Explain how AI will support—not replace—human roles. A clear vision fosters trust and alignment across the workforce.

### Upskill the Team:

Provide AI literacy and role-specific training to prepare employees for their enhanced responsibilities.

## THE WORKFORCE AS CHESS PIECES

In chess, each piece has a unique role, and success depends on leveraging their strengths.

Similarly, an AI Workforce Strategist views employees as the organization's most valuable assets, ensuring that AI enhances their potential rather than replaces it.



02.





03.

## THE PIECES ON THE BOARD:

### **Pawns (Entry-Level Employees):**

AI automates routine tasks, freeing these employees to focus on learning and development.

### **Bishops and Knights (Specialists):**

Specialists use AI to amplify their expertise, such as analyzing data faster or improving decision-making.

### **Rooks (Managers):**

AI provides managers with insights for better team performance and resource allocation.

### **The Queen (Leadership):**

Like the queen in chess, senior leaders drive strategy and innovation, leveraging AI to achieve organizational goals



## AI AS THE CHESSBOARD: SHAPING THE GAME

The chessboard dictates the flow of the game, just as AI systems shape how work is done.

An AI Workforce Strategist ensures the “board” (AI infrastructure) is optimized to empower employees and align with business goals.

### **STRATEGIST’S FOCUS**

**Optimize the Environment:** Select AI systems that are intuitive, user-friendly, and supportive of employees’ tasks.

**Align AI with Goals:** Ensure AI tools are directly connected to organizational priorities.

**Monitor and Refine:** Analyze how employees interact with AI and make adjustments to improve workflows



# AVOIDING BURNOUT: SIDESTEPPING CHECKMATE

In chess, avoiding checkmate requires foresight and adaptability. For an AI Workforce Strategist, the equivalent is preventing burnout—a “checkmate” that undermines employee morale, productivity, and retention.

## STRATEGIST’S MOVES TO PREVENT BURNOUT:

**Automate Thoughtfully:** Ensure AI automates repetitive tasks without creating new stressors.

**Promote Work-Life Balance:** Use AI to optimize schedules and prevent overwork.

**Encourage Feedback:** Establish feedback loops to understand employee experiences and refine AI implementations.

# ENDGAME: LONG-TERM SUCCESS

X  
X  
X

The endgame in chess is about leveraging every remaining resource to secure victory. For an AI Workforce Strategist, the endgame is achieving sustainable AI adoption that enhances innovation without sacrificing employee well-being.

## STRATEGIST’S ENDGAME FOCUS:

**Refine Continuously:** Regularly analyze the impact of AI on workflows and morale.

**Measure Success Beyond ROI:** Balance financial gains with metrics like employee satisfaction and retention.

**Promote Ethical AI:** Ensure AI systems are transparent, fair, and aligned with company values.

X X X

# WHY YOUR ORGANIZATION NEEDS AN AI WORKFORCE STRATEGIST

A chess grandmaster doesn't win by chance. They plan multiple moves ahead, anticipate challenges, and adapt to the board. Similarly, an AI Workforce Strategist ensures that your organization navigates the complexities of AI adoption with foresight and precision.

## KEY BENEFITS OF AN AI WORKFORCE STRATEGIST

### Prepare Workforce:

Equip employees to embrace AI as a tool for growth, not a threat.

### Prevent Burnout:

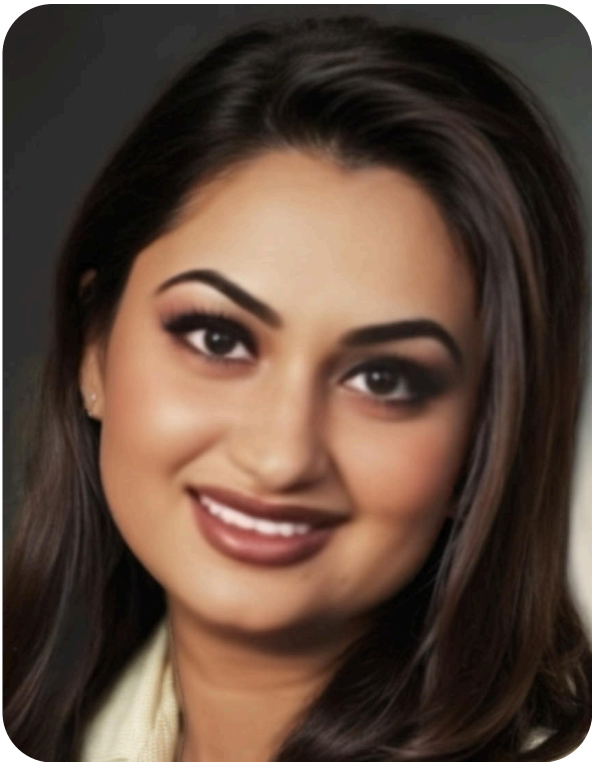
Thoughtful AI integration reduces stress and cognitive overload.

### Drive Sustainable Growth:

Balance innovation with workforce well-being.

calm code

X  
X



X  
X

## CONCLUSION: A CHECKMATE FOR SUCCESS

In the game of AI adoption, success depends on strategy, preparation, and adaptability.

An AI Workforce Strategist ensures sustainable growth and a thriving workforce, turning uncertainty into checkmate.

The right strategist can help your organization lead responsibly and effectively in the AI era.



682 202 5663



[www.calmcode.ai](http://www.calmcode.ai)

X  
X  
X

• • •  
• • •  
• • •

X  
X



• • • • •  
• • • • •  
• • • • •