

Reptiles and Frogs of North East Victoria

An Identification and Conservation Guide

Victorian Conservation Status (DELWP Advisory List)

cr critically endangered **en** endangered
vu vulnerable **nt** near threatened
dd data deficient
L Listed under the *Flora and Fauna Guarantee Act* (FFG, 1988)

Size:
Lizards, Dragons & Skinks: Snout-vent length (cm)
Snakes, Goannas: Total length (cm)
Frogs: Snout-vent length male - M (mm) Snout-vent length female - F (mm)

Guide to symbols

- Venomous
- Lifeform**
- F** Fossorial (burrows underground) **T** Terrestrial
SA Semi Arboreal **R** Rock-dwelling
- Habitat Type**
- Alpine Bog Montane Forests
 Alpine Grassland/Woodland Lowland Grassland/Woodland
- Reproduction Mode**
- Oviparous – egg laying Viviparous – bears live young
 Ovoviviparous - bears live young that emerge from individual membranous sacs shortly after birth

Further information and contacts

Department of Environment, Land Water and Planning (DELWP)
www.delwp.vic.gov.au
 Benalla (03) 5761 1611
 Wodonga (02) 6043 7900
 Alexandra (03) 5772 0200

North East CMA
www.necma.vic.gov.au Local Call : 1300 216 513

Goulburn Broken CMA
www.gbcm.vic.gov.au (includes the iSpy Frogs App) Benalla (03) 5820 1100

Victorian Biodiversity Atlas Search: Victorian Biodiversity Atlas Environment
Atlas of Living Australia www.ala.org.au

Australian National University Search: Conservation & landscape ecology
Landcare www.landcarevic.org.au

Trust for Nature www.tfn.org.au

Amphibian Research Centre (ARC) (including the Lost Frogs Home) www.frogs.org.au/arc

Frog friendly gardening www.frogs.org.au/frogwatch/friendly.html

Reptiles of the NSW Murray Catchment by Damian Michael & David Lindenmayer, 2010, CSIRO Publishing

Field Guide to the Frogs of Australia by Michael J Tyler & Frank Knight, 2009, CSIRO Publishing

Acknowledgements

This project is jointly funded by the Victorian Government and the Australian Government's National Landcare Programme, in collaboration with the North East & Goulburn Broken Catchment Management Authorities.

Photographs donated by Damian Michael (DM), Nick Clemann (NC), Peter Robertson (PR), Glen Johnson (GJ), David Hunter (DH), David Blair (DB)

Cover Photos: Alpine She-oak Skink (NC) and Spotted Tree Frog (GJ)
Compiled by: Glen Johnson & Catherine Nield-Fest (DELWP)

© The State of Victoria Department of Environment, Land, Water and Planning This work is licensed under a Creative Commons Attribution 4.0 International licence. You are free to re-use the work under that licence, on the condition that you credit the State of Victoria as author. The licence does not apply to any images, photographs or branding, including the Victorian Coat of Arms, the Victorian Government logo and the Department of Environment, Land, Water and Planning (DELWP) logo. To view a copy of this licence, visit creativecommons.org/licenses/by/4.0/

Disclaimer: This publication may be of assistance to you but the State of Victoria and its employees do not guarantee that the publication is without flaw of any kind or is wholly appropriate for your particular purposes and therefore disclaims all liability for any error, loss or other consequence which may arise from you relying on any information in this publication.

ISBN 978-1-76077-094-5 © Design - Colourfield Design www.colourfield.com.au 2018

Reptiles & Frogs of North East Victoria

An Identification and Conservation Guide



Reptiles & Frogs of North East Victoria



Lowland Copperhead
Austrelaps superbus 170 (NC)



Highland Copperhead
Austrelaps ramsayi 115 (PR)



Carpet Python
Morelia spilota metcalfei – en L 240 (DM)



Gray's Blind Snake
Ramphotyphlops nigrescens 38 (PR)



Nobbi Dragon
Diporiphora nobbi 8.4 (PR)



Bearded Dragon
Pogona barbata – vu 25 (DM)



Ragged Snake-eyed Skink
Cryptoblepharus pannosus Snout-Vent 3.5 (DM)



Large Striped Skink
Ctenotus robustus Snout-Vent 12 (DM)



White-lipped Snake
Drysdalia coronoides 40 (PR)



Tiger Snake
Notechis scutatus 200 (NC)



Woodland Blind Snake
Ramphotyphlops proximus – nt 50 (DM)



Olive Legless Lizard
Delma inornata 13 (DM)



Mountain Dragon
Rankinia diemensis Snout-Vent 7.5 (NC)



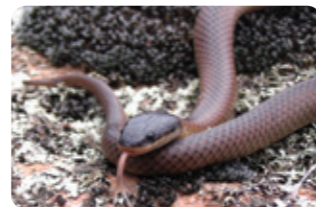
Marbled Gecko
Christinus marmoratus Snout-Vent 7 (PR)



Copper-tailed Skink
Ctenotus taeniolatus Snout-Vent 8 (DM)



Alpine She-oak Skink
Cyclodomorphus praealtus – Nationally Endangered
 cr L Snout-Vent 12 (NC)



Dwyer's Snake
Parasuta dwyeri 60 (DM)



Little Whip Snake
Parasuta flagellum 40 (NC)



Striped Legless Lizard
Delma impar – Nationally Vulnerable
 en L 10 (NC)



Burton's Snake-Lizard
Lialis burtonis 29 (DM)



Wood Gecko
Diplodactylus vittatus Snout-Vent 5 (DM)



Thick-tailed Gecko
Underwoodisaurus milii Snout-Vent 9.6 (NC)



Cunningham's Skink
Egernia cunninghami Snout-Vent 20 (PR)



Tree Skink
Egernia striolata Snout-Vent 12 (DM)



Red-bellied Black Snake
Pseudechis porphyriacus 200 (DB)



Eastern Brown Snake
Pseudonaja textilis 220 (PR)



Rosenberg's Goanna
Varanus rosenbergi – en L Snout-Vent 130 (DM)



Sand Goanna
Varanus gouldii Snout-Vent 160 (DM)



Eastern Three-lined Skink
Acritoscincus duperreyi Snout-Vent 8 (DM)



Red-throated Skink
Acritoscincus platynotum Snout-Vent 8 DM



Black Rock Skink
Egernia saxatilis intermedia Snout-Vent 13 (DM)



Yellow-bellied Water Skink
Eulamprus heatwolei Snout-Vent 10 (NC)



Eastern Small-eyed Snake
Rhinoplocephalus nigrescens 50 (NC)



Bandy Bandy
Vermicella annulata – vu L 60 (DM)



Lace Monitor
Varanus varius – en Snout-Vent 210 (DM)



Jacky Lizard
Amphibolurus muricatus 12 (NC)



McCoy's Skink
Anepischtos maccoyi Snout-Vent 5 (PR)



Southern Rainbow Skink
Carlia tetradactyla Snout-Vent 6.5 (DM)



Alpine Water Skink
Eulamprus kosciuskoi – cr L Snout-Vent 8.5 (NC)



Southern Water Skink
Eulamprus tympanum tympanum Snout-Vent 9.5 (NC)





Three-toed Skink
Hemiergis talbingoensis Snout-Vent 6 (DM)
F T U W O



Delicate Skink
Lampropholis delicata Snout-Vent 5.2 (DM)
T U W O



Tussock Skink
Pseudemoia pagenstecheri - vu Snout-Vent 6 (NC)
T U W O



Spencer's Skink
Pseudemoia spenceri Snout-Vent 6.5 (NC)
SA R U W O



Barking Marsh Frog
Limnodynastes fletcheri M41F46 (DM)
T U W O



Giant Bullfrog
Limnodynastes interioris - cr L M70 F68 (DM)
T U W O



Southern Brown Tree Frog
Litoria ewingii M31 F39 (NC)
SA U W O



Lesueur's Frog
Litoria lesueuri M33 F51 (NC)
SA U W O



Garden Skink
Lampropholis guichenoti Snout-Vent 5 (DM)
T U W O



Bougainville's Skink
Lerista bougainvillii Snout-Vent 7 (DM)
F U W O



Weasel Skink
Saproscincus mustelinus Snout-Vent 5.5 (NC)
T F U W O



Blotched Blue-tongued Lizard
Tiliqua nigrolutea Snout-Vent 30 (NC)
T U W O



Striped Marsh Frog
Limnodynastes peronii M58 F59 (NC)
T U W O



Spotted Marsh Frog
Limnodynastes tasmaniensis M36 F39 (DM)
T U W O



Leaf Green Tree Frog
Litoria nudidigitus M27 F30 (NC)
SA U W O



Plains Brown Tree Frog
Litoria paraewingi M24 F35 (DM)
SA U W O



Guthega Skink
Liopholis guthega - Nationally Endangered
cr L Snout-Vent 11 (NC) T U W O



Mountain Skink
Liopholis montana - dd Snout-Vent 11 (NC)
T U W O



Common Blue-tongued Lizard
Tiliqua scincoides Snout-Vent 33 (NC)
T U W O



Plains Froglet
Crinia parinsignifera M20 F22 (DM)
T U W O



Common Spadefoot Toad
Neobatrachus sudellae M41 F47 (NC)
T U W O



Brown Toadlet
Pseudophryne bibronii - en L M26 F28 (DH)
T U W O



Peron's Tree Frog
Litoria peronii M48 F55 (NC)
SA U W O



Growling Grass Frog
Litoria raniformis - Nationally Vulnerable
en L M60 F82 (NC) F U W O



White's Skink
Liopholis whitii Snout-Vent 11.5 (NC)
T U W O



Boulenger's Skink
Morethia boulengeri Snout-Vent 5 (DM)
T U W O



Common Froglet
Crinia signifera M21 F24 (DM)
T U W O



Sloane's Froglet
Crinia sloanei M16 F16 (DM)
T U W O



Dendy's Toadlet
Pseudophryne dendyi - dd M26 F27 (DH)
T U W O



Smooth Toadlet
Uperoleia laevigata - dd M24 F27 DH
T U W O



Spotted Tree Frog
Litoria spenceri - Nationally Endangered
cr L M32 F44 (GJ) SA U W O



Alpine Tree Frog
Litoria verreauxii alpina - Nationally Vulnerable
cr L M32 F32 (NC) SA U W O



Coventry's Skink
Niveoscincus coventryi Snout-Vent 5 (DM)
T U W O



Southern Grass Skink
Pseudemoia entrecasteauxii Snout-Vent 6 (DM)
T U W O



Victorian Smooth Froglet
Geocrinia victoriana M26 F27 (NC)
T U W O



Pobblebonk Frog
Limnodynastes dumerilii M71 F67 (NC)
T U W O



Rugose Toadlet
Uperoleia rugosa - en L M25 F24 (DM)
T U W O



Booroolong Tree Frog
Litoria booroolongensis - Nationally Endangered
cr L M39 F51 (DH) T U W O



Verreaux's Tree Frog
Litoria verreauxii verreauxii M31 F34 (DM)
SA U W O



Eastern Dwarf Tree Frog
Litoria fallax - Naturalised in Victoria
M24 F28 (DM) SA U W O

Reptiles and Frogs of North East Victoria

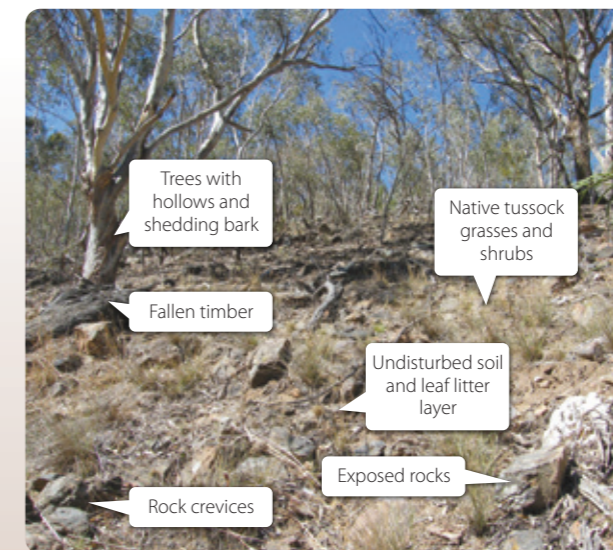
North East Victoria is home to a diverse array of reptiles and frogs found within a range of habitat types. Unfortunately, some reptile and many frog species are declining at an alarming rate. Of the 80 species shown in this brochure, 21 are threatened and are protected under the national Environment Protection & Biodiversity Conservation Act or Victoria's Flora and Fauna Guarantee Act.

Why are reptiles and frogs declining?

- habitat loss, fragmentation and degradation (e.g. due to overgrazing by livestock or weed invasion)
- changes to water flows and water quality decline
- predation (especially cats)
- bush rock and fallen timber removal
- disease including the fatal amphibian chytrid fungus

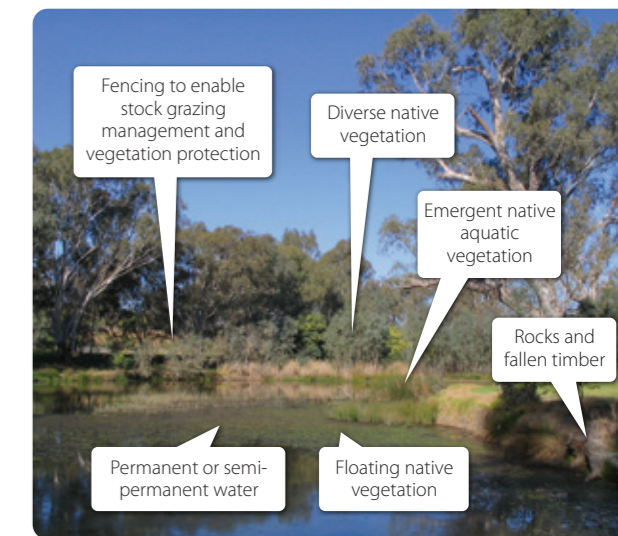
Key reptile and frog habitat features

Reptiles prefer environments with a diversity of habitat features including rocky basking sites, native vegetation and fallen timber. Frogs also have variable habitat requirements, however most species require access to water for laying eggs and tadpole development. Key frog habitat features include stationary or flowing water, emergent and submerged aquatic vegetation, logs, rocks and native trees and shrubs. Sites with these key features create suitable conditions for reptiles and frogs by providing habitat for prey (insects etc.), refuge from predators and a variety of foraging, shelter and breeding sites.



Importance of reptiles and frogs

Reptiles and frogs play an important role in the ecosystem as both predators and prey for a range of animals including birds, marsupials and other reptiles. Large reptiles such as carpet pythons help regulate populations of introduced pest species such as mice, rats and rabbits, whereas smaller reptiles and frogs feed on insects and other invertebrates, often helping to control pest insect populations. Frogs are very sensitive to changes in their habitat and can serve as indicators of the overall health of both terrestrial and aquatic ecosystems.



You can help!

Protect and enhance sites with important habitat features:

- Fence to exclude or manage livestock grazing
- Revegetate with native grasses, shrubs and aquatic plants
- Undertake priority weed, pest and predator control
- Minimise fertiliser and pesticide application and run-off
- Establish conservation covenants or other land management agreements.

To conserve Victoria's reptiles and frogs:

- Join a local community, Landcare or conservation group
- Practice responsible pet ownership
- Establish a frog and lizard friendly garden
- Report any accidentally imported 'banana box' frogs to the ARC Lost frogs home
- Submit records to the Victorian Biodiversity Atlas (DELWP) or the Goulburn Broken Catchment Management Authority iSpy Frogs App.