

Chiltern Area Native Plant Lists

Including Barnawartha, Indigo, Chiltern Valley, Cheesley Hill

About this brochure



This brochure provides lists of plant species that are locally native (indigenous) to the **Chiltern area** (see back page for map).

These species are grouped into lists for different profiles of the landscape/topography, representing the different vegetation types (Ecological Vegetation Classes, EVCs) that occur there. The species in **bold** are those which are more common, and underlined species are those that are more likely to be available from nurseries that sell indigenous plants. The lists are cross-referenced with **EVC benchmarks** (see references).

Why restore and revegetate?



These activities provide for: shelter for stock, pasture or crops; creating/ enhancing the habitat for native species; improving water quality; land protection; farm forestry (including firewood, sawlogs); meeting legislative requirements (eg. offsets), and aesthetics.

What do you want to achieve?



The purpose of your works helps dictate the following; *where*, eg. extend existing native vegetation, link between patches, corner of paddock, along drainage line, in gully etc; *how*, eg. planting, direct seeding or natural regeneration; the *on going management* required; *what species* you revegetate with; the *density* (how many plants); and the *arrangement*, eg. rows versus random, shrubs around existing trees.

Make the most of your efforts!



The long term survival, effective regeneration and other benefits can easily be optimised, whatever the purpose of your efforts. Expanding the range of plant types to include shrubs, grasses and wildflowers helps keep your native trees healthy and provides the building materials, furniture and food needed by local native animals. These improve the chance of restoring plant-animal interactions such as pollination and insect control, assisting your restoration site and surrounding areas to be self-sustaining.

How do I go about it?



Preparing the ground, undertaking pest and weed control, selection of plants, spacing and arrangement of plants, method of planting, watering in, mulching, guarding, fencing and monitoring are all factors which will vary according to your site and purpose. The book *Revegetation Techniques A guide to establishing native vegetation in Victoria* (2003) Greening Australia is available from the website: www.greeningaustralia.com.au

Order in advance



To maximise your range of species, order at least 12 months in advance. Nurseries can grow many species if they know you want them. They can also ensure that the seed is local to your site (plants genetically adapted to your conditions survive the best). So plan and order. If you collect your own seed, this can be given to nurseries to grow. Then you can be sure of how local your local plants are! A list of nurseries supplying indigenous plants in the NE Region can be found in *Revegetation Resources Directory*, DSE (2005) on the NECMA website: www.necma.vic.gov.au

Choosing the best list for a site



Selecting the appropriate list will ensure that the species are suited to the conditions. Consider: *where* you are in the landscape/ topography (eg. floodplain, flats, rises); the soil type and remnant vegetation near by. Based on this and current site conditions, select the best suited profile/s, using species descriptions as a guide.

More Information



The following references are available on the DPI & DSE websites (www.dpi.vic.gov.au; www.dse.vic.gov.au) and at their offices
Wodonga McKoy St (02) 60437900
Wangaratta Cnr Ovens and Ford St (03) 57238600

General: DSE (2006) *Native Vegetation Revegetation planting standards - Guidelines for establishing native vegetation for net gain accounting*, DSE, East Melbourne.
Perry, D and Butler, M. (2004) *Tree planting and aftercare*, LC0104, DPI, Melbourne.

Biodiversity: Platt, S. (2002) *How to Plan Wildlife Landscapes*, DNRE, Melbourne.

Riparian Revegetation: Price, P. & Lovett, S. (2002) 'Managing riparian land', 1, Land & Water Australia Canberra.

Farm Forestry: Hajek, C. (2002) *Farm forestry / agroforestry: What is it?*, AG0790, DPI, Horsham.

Shelter Belts: Johnson H. and Brandle, James (2003) *Shelterbelt design*, LC 0136, DPI, Stawell.

Salinity: DPI (2005) *Frequently Asked Question About Salinity Tree Planting Incentive Projects* NESSI

EVC Descriptions and Benchmarks: www.dse.vic.gov.au under 'Conservation and Environment' go to 'Native Vegetation Information for Victoria'.

DNRE (2002), *Managing Your Patch of Bush*, Wodonga.

Species Descriptions: www.csu.edu.au/herbarium/riverina

Chiltern Gilgai - Low Rises - Stoney Hills



Landform	Plain	Low Hills and Rises	Low Hills
Description	Alluvial plains and gently undulating plains at low elevations	Lower slopes of stony sedimentary hills, low hills of plains	Low hills on plains or adjacent to the foothills
Geology & Soils	Alluvium: gilgai of poorly drained grey or black cracking clays interspersed with lighter soils	Sedimentary colluvium: deeper than skeletal soils upslope	Sedimentary: skeletal sandy loam to clay loams, often gravelly
EVC	Plains Woodland/ Herb-rich Gilgai Wetland Mosaic	Low Rises Grassy Woodland	Box Ironbark Forest
Location Example	No local examples, see southwest area of Reef Hills Park, Benalla	Howlong Rd - to north of Chiltern National Park	Chiltern-Yackandandah Rd section through Chiltern NP
Legend	Trees > 5m	Trees > 5m	Trees > 5m
Underline text = likely to be available from nurseries	<i>Allocasuarina luehmannii</i> <i>Eucalyptus camaldulensis</i> ¹ <i>Eucalyptus microcarpa</i>	Buloke <i>Eucalyptus albens</i> <i>Eucalyptus microcarpa</i> <i>Eucalyptus polyanthemos</i>	<i>Eucalyptus macrorhyncha</i> <i>Eucalyptus microcarpa</i> <i>Eucalyptus polyanthemos</i> <i>Eucalyptus sideroxylon</i>
Bold text = more common in EVC	Shrubs <i>Acacia acinacea</i> (MS) <i>Acacia paradoxa</i> (MS) <i>Acacia pycnantha</i> (MS) <i>Cassinia arcuata</i> (MS) <i>Pimelea curviflora</i> (SS)	Shrubs <i>Acacia acinacea</i> (MS) <i>Acacia difformis</i> (MS) <i>Acacia genistifolia</i> (MS) <i>Acacia pycnantha</i> (MS) <i>Acrotriche serrulata</i> (PS) <i>Bursaria spinosa</i> sbsp. <i>spinosa</i> <i>Cassinia arcuata</i> (MS) <i>Dillwynia cinerascens</i> (SS) <i>Dillwynia sericea</i> (SS) <i>Haecckera ozothamnoides</i> (MS) <i>Pimelea humilis</i> (SS) <i>Pultenaea prostrata</i> (SS)	Shrubs <i>Acacia acinacea</i> (MS) <i>Acacia genistifolia</i> (MS) <i>Acacia pycnantha</i> (MS) <i>Acrotriche serrulata</i> (PS) <i>Brachylopha daphnoides</i> (MS) <i>Cassinia arcuata</i> (MS) <i>Cheiranthera cyanea</i> (SS) <i>Daviesia leptophylla</i> (MS) <i>Dillwynia sericea</i> (SS) <i>Grevillea alpina</i> (MS) <i>Haecckera ozothamnoides</i> (MS) <i>Hibbertia obtusifolia</i> (SS) <i>Hibbertia riparia</i> (SS)
Woody plants (include large shrubs) > 5m (UT) Understorey	Gold-dust Wattle Hedge Wattle Golden Wattle Drooping Cassinia Curved Rice-flower	Gold-dust Wattle Drooping Wattle Spreading Wattle Golden Wattle Honey-pots (MS) Sweet Bursaria Drooping Cassinia Grey Parrot-pea Showy Parrot-pea Cottony Haecckera Common Rice Flower Silky Bush-pea	Gold-dust Wattle Spreading Wattle Golden Wattle Honey-pots Daphne Heath Drooping Cassinia Blue Finger-flower Narrow-leaf Bitter-pea Showy Parrot-pea Cat's Claw Grevillea Cottony Haecckera Grey Guinea-flower Erect Guinea-flower Twiggy Bush-pea Loose-flower Bush-pea Silky Bush-pea
Trees = trees or large shrubs > 5m that do not form part of the canopy	Common Swamp Wallaby-grass Short Wallaby-grass Brown-back Wallaby-grass Woodland Swamp-daisy Milkmaids Pink Bindweed Reed Bent-grass Black-anther Flax-lily Nodding Saltbush Waterwort	Common Swamp Wallaby-grass Short Wallaby-grass (M) Brown-back Wallaby-grass Woodland Swamp-daisy Milkmaids Pink Bindweed Reed Bent-grass Black-anther Flax-lily Nodding Saltbush Waterwort	Common Wallaby-grass Hill Wallaby-grass Rough Spear-grass Digger's Speedwell Black-anther Flax-lily Ivy Goodenia Purple Coral-pea Silvertop Wallaby-grass Wattle Mat-rush Grey Tussock-grass Slender Fireweed Shiny Everlasting
Shrubs (MS) Medium 1-5m (SS) Small 20cm-1m (PS) Prostrate <50cm	<i>Amphibromus nervosus</i> ¹ (L) <i>Austrodanthonia carphoides</i> (M) <i>Austrodanthonia duttoniana</i> ¹ (LH) <i>Brachycome basillifera</i> (MH) <i>Burchardia umbellata</i> (MH) <i>Convolvulus erubescens</i> (SH) <i>Deyeuxia quadrifida</i> (L) <i>Dianella revoluta</i> (M) <i>Einadia nutans</i> (MH) <i>Elatine gratiolioides</i> ¹ (SH) <i>Elymus scaber</i> (M) <i>Isolepis cernua</i> (M) <i>Isotoma fluviatilis</i> ¹ (SH) <i>Juncus semisolidus</i> (L) <i>Lomandra filiformis</i> (M) <i>Pentapogon quadrifidus</i> (M) <i>Senecio quadridentatus</i> (LH) <i>Vitidalia cuneata</i> (MH) <i>Wahlenbergia communis</i> (LH)	Groundcovers <i>Aristida behriana</i> (M) <i>Asperula conferta</i> (MH) <i>Austrodanthonia caespitosa</i> (M) <i>Austrodanthonia carphoides</i> (M) <i>Austrodanthonia eriantha</i> (M) <i>Austrostipa densiflora</i> (M) <i>Austrostipa scabra</i> (M) <i>Bothriochloa macra</i> (M) <i>Calochephalus citreus</i> (LH) <i>Convolvulus erubescens</i> (SH) <i>Dianella revoluta</i> (M) <i>Einadia nutans</i> (MH) <i>Elymus scaber</i> (M) <i>Goodenia hederacea</i> (MH) <i>Lomandra filiformis</i> (M) <i>Poa sieberiana</i> (M) <i>Xerochrysum viscosum</i> (LH)	Groundcovers <i>Austrodanthonia caespitosa</i> (M) <i>Austrodanthonia eriantha</i> (M) <i>Austrostipa scabra</i> (M) <i>Derwentia perfoliata</i> (LH) <i>Dianella revoluta</i> (M) <i>Goodenia hederacea</i> (MH) <i>Hardenbergia violacea</i> (SC) <i>Joycea pallida</i> (L) <i>Lomandra filiformis</i> (M) <i>Poa sieberiana</i> (M) <i>Senecio tenuiflorus</i> (LH) <i>Xerochrysum viscosum</i> (LH)
(L) Large grass-like plant >1m (M) Medium grass-like plant 10cm-1m (T) Tiny grass-like plant <10cm (LH) Large herb>50cm (MH) Medium herb 5-20cm (SH) Small or prostrate herb < 5cm (GF) Ground Fern (SC) Scrambler/climber	Common Wheat-grass Broad-fruit Club-sedge Swamp Isotome Plains Rush Wattle Mat-rush Five-awned Spear-grass Drumsticks Cotton Fireweed Fuzzy New Holland Daisy Tufted Bluebell	Hill Wallaby-grass Dense Spear-grass Rough Spear-grass Red-leg Grass Lemon Beauty-heads Pink Bindweed Black-anther Flax-lily Nodding Saltbush Common Wheat-grass Ivy Goodenia Wattle Mat-rush Grey Tussock-grass Shiny Everlasting	Common Wallaby-grass Hill Wallaby-grass Rough Spear-grass Digger's Speedwell Black-anther Flax-lily Ivy Goodenia Purple Coral-pea Silvertop Wallaby-grass Wattle Mat-rush Grey Tussock-grass Slender Fireweed Shiny Everlasting

¹ Gilgai soils predominantly

Chiltern Plains - Creeklines - Plains



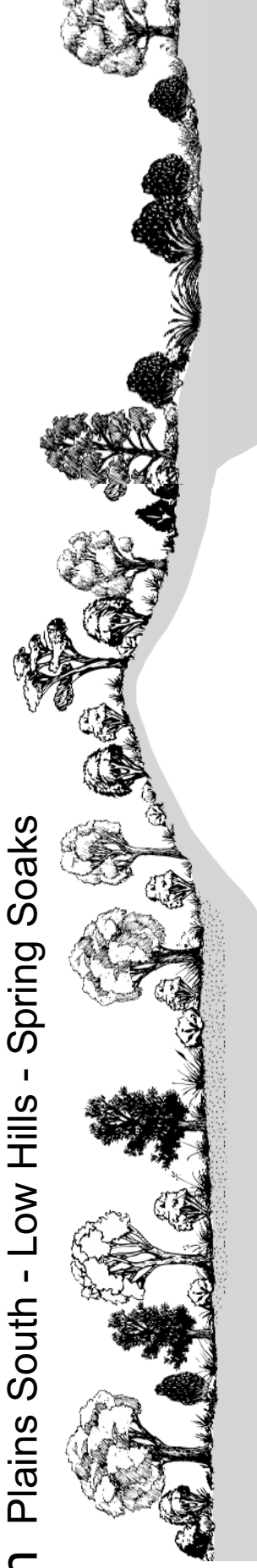
Landform	Plain	Creepline	Plain
Description	Alluvial plains and gently undulating plains at low elevations - dominated by Box eucalyptis	Low-gradient ephemeral (seasonal) drainage lines on plains and beginning in low hills.	Terrace beside creeks and drainage lines, below level of surrounding plain, well drained.
Geology & Soils	Alluvial sediments: well-drained red or brown soils, clay loam to sandy clay loam	Alluvial sediments: sands, clays and silts	Alluvial sediments: sands, silts and loams
EVC	Plains Woodland	Creepline Grassy Woodland Mosaic	Alluvial-terraces Herb-rich Woodland/
Location Example	Reserve on Soldiers Rd, NW of Barnawartha	Black Dog Ck Reserve & Indigo Creek at Harkins Rd (not intact)	Indigo Creek at Harkins Road, north Barnawartha (not intact)
Legend	Trees > 5m	Trees > 5m	Trees > 5m
Underline text = likely to be available from nurseries	<u><i>Allocasuarina luehmannii</i></u> <u><i>Eucalyptus albens</i></u> <u><i>Eucalyptus camaldulensis</i></u> <u><i>Eucalyptus melliodora</i></u> <u><i>Eucalyptus microcarpa</i></u>	<u><i>Acacia dealbata</i></u> (UT) <u><i>Acacia implexa</i></u> (UT) <u><i>Eucalyptus camaldulensis</i></u> <u><i>Eucalyptus melliodora</i></u>	<u><i>Acacia dealbata</i></u> (UT) <u><i>Acacia implexa</i></u> (UT) <u><i>Eucalyptus albens</i></u> <u><i>Eucalyptus camaldulensis</i></u> <u><i>Eucalyptus melliodora</i></u> <u><i>Eucalyptus microcarpa</i></u>
Bold text = more common in EVC	Buloke White Box River Red-gum Yellow Box Grey Box	Silver Wattle Lightwood River Red Gum Yellow Box	Silver Wattle Lightwood River Red Gum Yellow Box Grey Box
Trees	Shrubs Acacia acinacea (MS) Acacia difformis (MS) Acacia paradoxa (MS) Acacia pycnantha (MS) Cassinia arcuata (MS) Dillwynia sericea (SS) Enclylaena tomentosa (SS) Pimelea curviflora (SS)	Shrubs Acacia paradoxa (MS) Acacia pycnantha (MS) Acacia verniciflua (MS) Bursaria spinosa sbsp. spinosa (MS) Cassinia arcuata (MS) Dillwynia sericea (SS)	Shrubs Acacia acinacea (MS) Acacia paradoxa (MS) Acacia pycnantha (MS) Acacia verniciflua (MS) Bursaria spinosa sbsp. spinosa (PS) Cassinia arcuata (MS) Dillwynia sericea (SS)
Woody plants (include large shrubs) > 5m (UT) Understorey	Gold-dust Wattle Drooping Wattle Hedge Wattle Golden Wattle Drooping Cassinia Showy Parrot-pea RUBY Saltbush Curved Rice-flower	Hedge Wattle Golden Wattle Varnish Wattle Sweet Bursaria Drooping Cassinia Showy Parrot-pea	Gold-dust Wattle Hedge Wattle Golden Wattle Varnish Wattle Creeping Bossiaea (MS) Sweet Bursaria Drooping Cassinia Showy Parrot-pea
Trees > 5m that do not form part of the canopy			
Shrubs	Groundcovers Arthropodium strictum (LH) Austrodanthonia caespitosa Austrostipa aristiglumis (L) Austrostipa scabra (M) Calocephalus citreus (LH) Chloris truncata (M) Dianella revoluta (M) Einadia hastata (MH) Einadia nutans (MH) Elivmus scaber (M) Enteropogon acicularis (M) Goodenia pinnatifida (MH) Juncus semisolidus (L) Lomandra filiformis (M) Vittadinia cuneata (MH)	Groundcovers Arthropodium strictum (LH) Bulbine bulbosa (MH) Carex appressa (L) Dianella longifolia (M) Dianella revoluta (M) Glycine tabacina (SC) Lomandra multiflora (M) Juncus planifolius (M) Juncus remotiflorus (M) Microlaena stipoides (M) Poa sieberiana (M) Rumex brownii (MH) Senecio tenuiflorus (LH) Themeda triandra (L) Tricoryne elatior (M) Vittadinia cuneata (MH)	Groundcovers Acaena agnipila (MH) Arthropodium strictum (LH) Bulbine bulbosa (MH) Dianella longifolia (M) Dianella revoluta (M) Glycine tabacina (SC) Lomandra multiflora (M) Juncus planifolius (M) Juncus remotiflorus (M) Microlaena stipoides (M) Poa sieberiana (M) Rumex brownii (MH) Senecio tenuiflorus (LH) Themeda triandra (L) Tricoryne elatior (M) Vittadinia cuneata (MH)
(MS) Medium 1-5m (SS) Small 20cm-1m (PS) Prostrate <50cm	Chocolate Lily (M) Common Wallaby-grass Short Wallaby-grass Plump Spear-grass Rough Spear-grass Lemon Beauty-heads Windmill Grass Black-anther Flax-lily Saloop Nodding Saltbush Common Wheat-grass Spider Grass Cut-leaf Goodenia Plains Rush Wattle Mat-rush Fuzzy New Holland Daisy	Chocolate Lily Bulbine Lily Tall Sedge Pale Flax-lily Black-anther Flax-lily Variable Glycine Many-flowered Mat-rush Broad-leaf Rush Diffuse Rush Weeping Grass Grey Tussock-grass Slender Dock Slender Fireweed Kangaroo Grass Yellow Rush-lily Fuzzy New Holland Daisy	Hairy Sheep's Burr Chocolate Lily Bulbine Lily Pale Flax-lily Black-anther Flax-lily Variable Glycine Many-flowered Mat-rush Broad-leaf Rush Diffuse Rush Weeping Grass Grey Tussock-grass Slender Dock Slender Fireweed Kangaroo Grass Yellow Rush-lily Fuzzy New Holland Daisy
Groundcovers	(L) Large grass-like plant > 1m (M) Medium grass-like plant 10cm-1m (T) Tiny grass-like plant <10cm (LH) Large herb>50cm (MH) Medium herb 5-20cm (SH) Small or prostrate herb < 5cm (GF) Ground Fern (SC) Scrambler/climber		

Chiltern Dry Slopes - Gentle Slopes and Valleys



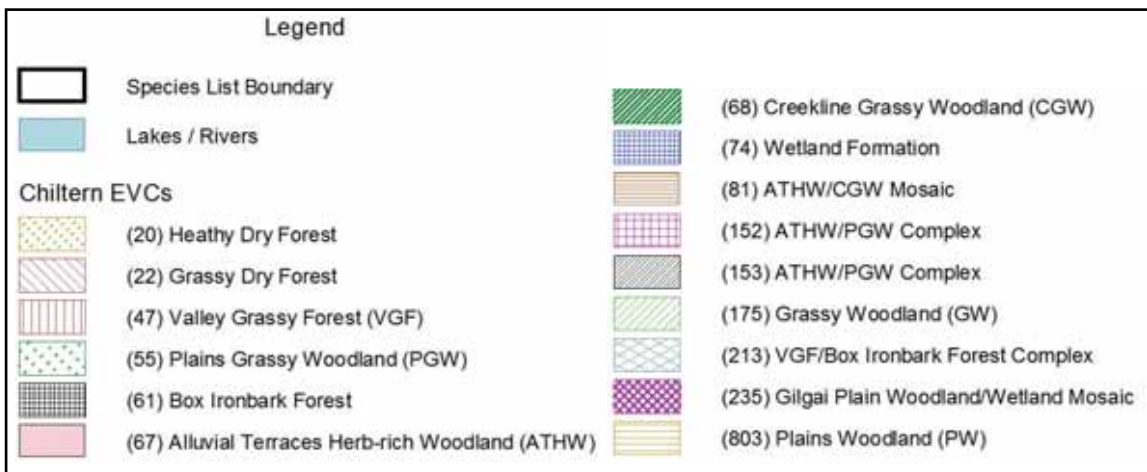
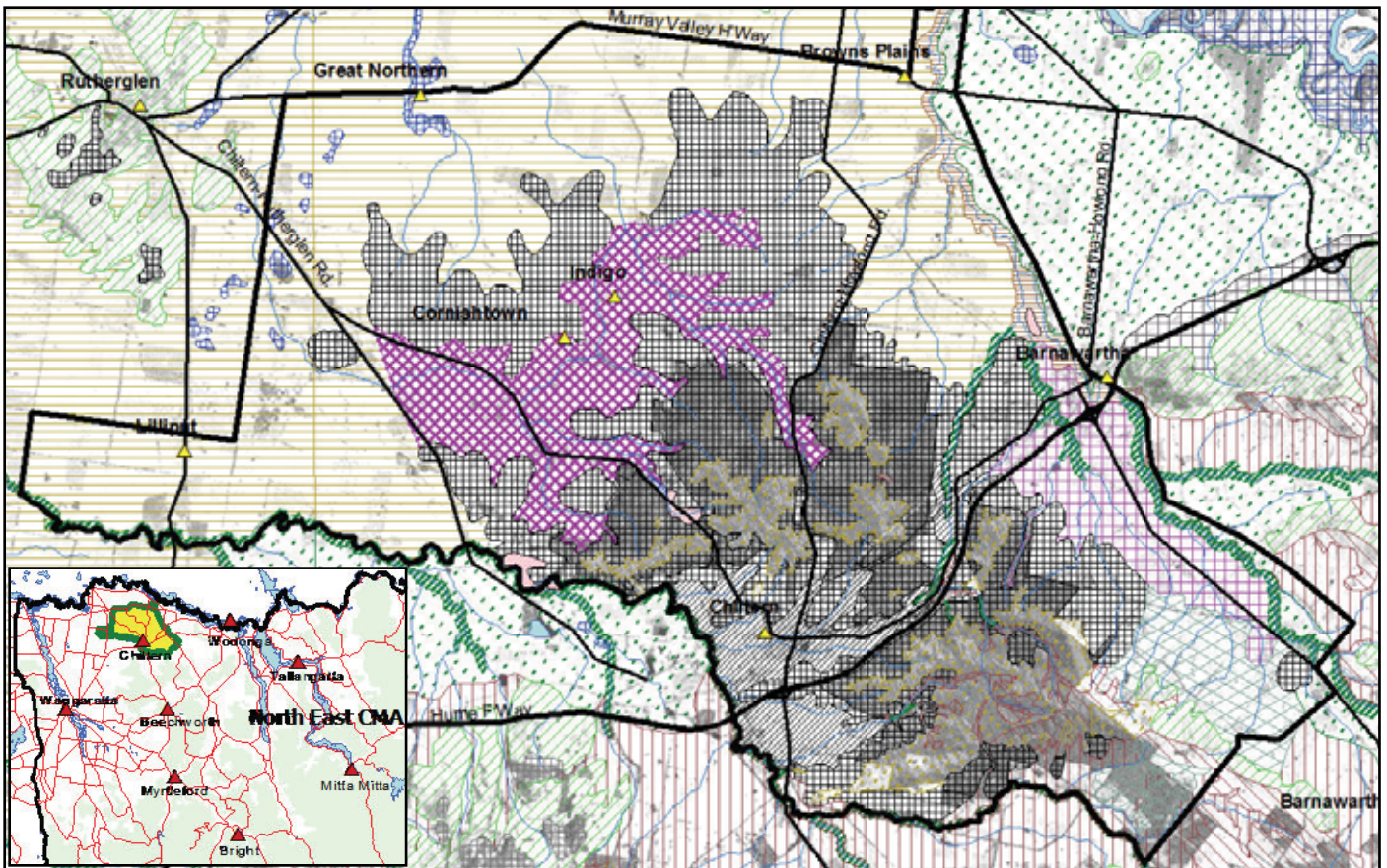
Landform Description	Hills and Foothills	Hills and Foothills	Valleys in Hills
Geology & Soils	Ridges, moderate to steep dry slopes north to west facing Sedimentary or granitic: skeletal sandy loam soil	Moderate to steep dry slopes generally south and east facing Sedimentary or granitic: typically shallow soils	Broad valley bottoms, footslopes and moderate hill slopes Colluvium derived from various geologies: well-drained red-brown gradational soils to loam soils
EVC	Heathy Dry Forest	Grassy Dry Forest	Valley Grassy Forest
Location Example	Tower Hill Rd, north of Cyanide Rd, Chiltern NP	South side of White Box Track, west of Coyles Tk, Chiltern NP	Lancashire Gap Rd, 500m E of Boundary Tk, Chiltern NP
Legend	Trees > 5m	Trees > 5m	Trees > 5m
Underline text = likely to be available from nurseries	<u>Eucalyptus gonicalyx</u> <u>Eucalyptus macrorhyncha</u> <u>Eucalyptus polyanthemus</u> <u>Eucalyptus sideroxyton</u>	Lightwood Black Cypress-pine Blakely's Red-gum Long-leaf Box / Bundy Red Stringybark Red Box	<u>Acacia dealbata</u> (UT) <u>Acacia implexa</u> (UT) <u>Eucalyptus albens</u> <u>Eucalyptus blakelyi</u> <u>Eucalyptus bridgesiana</u> <u>Eucalyptus macrorhyncha</u> <u>Eucalyptus melliodora</u> <u>Eucalyptus polyanthemus</u>
Bold text = more common in EVC	Shrubs Acacia gunnii (SS) Acacia ulicifolia (MS) Acrotriche serrulata (PS) Brachyoloma daphnoides (MS) Cheiranthera cyanea (SS) Daviesia leptophylla (MS) Dillwynia phyllicoides (SS) Gompholobium huegelii (SS) Grevillea alpina (MS) Grevillea lanigera (MS) Hibbertia obtusifolia (SS) Leucopogon virgatus (SS) Lissanthe strigosa (SS) Melichrus urceolatus (SS) Persoonia rigida (MS) Platylobium formosum (PS)	Shrubs Acacia rubida (MS) Acrotriche serrulata (PS) Bursaria spinosa sbsp spinosa Cassinia aculeata (MS) Daviesia leptophylla (MS) Dillwynia sericea (SS) Hibbertia obtusifolia (SS) Indigofera australis (MS) Pimelea humilis (SS) Groundcovers Asperula scoparia (MH) Billardiera scandens (SC) Cheilanthes austrotenuifolia (GF) <u>Chrysocephalum semipapposum</u> Dianella revoluta (M) Dichelachne rara (M) Euchiton collinus (MH) Geranium solanderi (MH) Hardenbergia violacea (SC) Joycea pallida (L) <u>Lomandra filiformis</u> (M) Luzula meridionalis v. densiflora (M) Microseris sp. 3 (LH) Microseris sp. 3 (LH) Poa sieberiana (M) Senecio quadridentatus (LH) Wahlenbergia stricta (LH) Xanthorrhoea minor subsp. lutea (L) Small Grass-tree	Shrubs Acacia dealbata (UT) Acacia implexa (UT) White Box Blakely's Red-gum Apple Box / But But Red Stringybark Yellow Box Red Box Shrubs Acacia paradoxa (MS) Acacia rubida (MS) Acacia verniciflua (MS) Bursaria spinosa sbsp spinosa Cassinia aculeata (MS) Daviesia leptophylla (MS) Dillwynia sericea (SS) Hibbertia obtusifolia (SS) Indigofera australis (MS) Groundcovers Prickly Woodruff Common Apple-berry Green Rock-fern (LH) Clustered Everlasting Black-anther Flax-lily Common Plume-grass Clustered Cudweed Austral Cranesbill Purple Coral-pea Silvertop Wallaby-grass Wattle Mat-rush Common Woodrush Weeping Grass Yam Daisy Grey Tussock-grass Cotton Fireweed Tall Bluebell Small Grass-tree
Trees Woody plants (include large shrubs) > 5m (UT) Understorey Trees = trees or large shrubs > 5m that do not form part of the canopy	Shrubs (MS) Medium 1-5m (SS) Small 20cm-1m (PS) Prostrate <50cm	Shrubs (MS) Medium 1-5m (SS) Small 20cm-1m (PS) Prostrate <50cm	Shrubs (MS) Medium 1-5m (SS) Small 20cm-1m (PS) Prostrate <50cm
Groundcovers (L) Large grass-like plant > 1m (M) Medium grass-like plant 10cm-1m (T) Tiny grass-like plant < 10cm (LH) Large herb > 50cm (MH) Medium herb 5-20cm (SH) Small or prostrate herb < 5cm (GF) Ground Fern (SC) Scrambler/climber	Groundcovers (L) Large grass-like plant > 1m (M) Medium grass-like plant 10cm-1m (T) Tiny grass-like plant < 10cm (LH) Large herb > 50cm (MH) Medium herb 5-20cm (SH) Small or prostrate herb < 5cm (GF) Ground Fern (SC) Scrambler/climber	Groundcovers (L) Large grass-like plant > 1m (M) Medium grass-like plant 10cm-1m (T) Tiny grass-like plant < 10cm (LH) Large herb > 50cm (MH) Medium herb 5-20cm (SH) Small or prostrate herb < 5cm (GF) Ground Fern (SC) Scrambler/climber	Groundcovers (L) Large grass-like plant > 1m (M) Medium grass-like plant 10cm-1m (T) Tiny grass-like plant < 10cm (LH) Large herb > 50cm (MH) Medium herb 5-20cm (SH) Small or prostrate herb < 5cm (GF) Ground Fern (SC) Scrambler/climber

Chiltern Plains South - Low Hills - Spring Soaks



Landform Description	Plains and Lower Slopes	Low Hills	Hills, Slopes and Valleys
Secondary or non-active alluvial plains (not on floodplain)		Low hills and gentle lower slopes of foothills	Spring-soaks on lower slopes or outwash
Geology & Soils	Alluvial sediments; brown-red soils; black uniform loams; poorly drained grey clay soils	Granodiorite, metamorphic gneiss: well-drained red gradational loam; red/ grey contrast soils	Granitic or metamorphic: poorly drained clays, silts; moist through summer
EVC	Plains Grassy Woodland	Rainshadow Grassy Woodland	Spring Soak Hermland/Woodland Mosaic
Location Example	Cookinburra Road reserve, south west of Indigo Creek Road	Watchbox Rd; Kopshoife Lane, east of Masons Gap Rd	Patches in upper areas of Black Dog & Deep creek catchments
Legend	Trees > 5m	Trees > 5m	Trees > 5m
Underline text = likely to be available from nurseries	<u>Acacia implexa</u> (UT) <u>Callitris glaucophylla</u> ¹ <u>Eucalyptus blakeyi</u>	<u>Acacia implexa</u> (UT) <u>Allocasuarina verticillata</u> (UT) <u>Brachychiton populneus</u> <u>Callitris glaucophylla</u>	<u>Acacia dealbata</u> (UT) <u>Eucalyptus blakeyi</u> <u>Eucalyptus bridgesiana</u>
Bold text = more common in EVC	<u>Eucalyptus camaldulensis</u> <u>Eucalyptus melliodora</u> ¹ <u>Eucalyptus polyanthemus</u>	<u>River Red-gum</u> <u>Yellow Box</u> ¹ <u>Red Box</u> <u>Cherry Ballart</u>	Shrubs <u>Callistemon ptyoides</u> (MS) <u>Epacris breviflora</u> (MS) <u>Leptospermum continentale</u> (MS) <u>Mirbelia oxylobioides</u> (MS)
Trees	Shrubs <u>Acacia paradoxa</u> (MS) <u>Bossiaea prostrata</u> (PS) <u>Bursaria spinosa ssp. spinosa</u> <u>Cassinia arcuata</u> (MS) <u>Dillwynia cinerascens</u> (SS) <u>Pimelea curviflora</u> (SS)	Shrubs <u>Acacia deanei</u> (MS) <u>Acacia rubida</u> (MS) <u>Acacia verniciflua</u> (MS) <u>Acrotriche serrulata</u> (PS) <u>Bursaria spinosa sbsp. spinosa</u> (MS) <u>Cassinia aculeata</u> (MS) <u>Cheiranthera cyanea</u> (SS) <u>Daviesia leptophylla</u> (MS) <u>Dillwynia cinerascens</u> (SS) <u>Indigofera australis</u> (MS)	Groundcovers <u>Baumea rubiginosa</u> (L) <u>Carex appressa</u> (L) <u>Craspedia variabilis</u> (MH) <u>Eragrostis brownii</u> (M) <u>Euchiton collinus</u> (MH) <u>Gonocarpus micranthus</u> (SH) <u>Goodenia macbaronii</u> (MH) <u>Juncus holoschoenus</u> (M) <u>Juncus planifolius</u> (M) <u>Juncus sarophorus</u> (L) <u>Schoenus apogon</u> (M)
Woody plants (include large shrubs) > 5m			
(UT) Understorey			
Trees = trees or large shrubs > 5m that do not form part of the canopy			
Shrubs	Groundcovers <u>Arthropodium strictum</u> (LH) <u>Austrodanthonia caespitosa</u> (M) <u>Austrodanthonia racemosa</u> (M) <u>Austrostipa nodosa</u> (L) <u>Bulbine bulbosa</u> (MH) <u>Carex inversa</u> (M) <u>Dianella longifolia</u> (M) <u>Dianella revoluta</u> (M) <u>Geranium solanderi</u> (MH) <u>Glycine clandestina</u> (SC) <u>Leptorhynchus squamatus</u> (MH) <u>Lomandra filiformis</u> (M) <u>Pentapogon quadrifidus</u> (M) <u>Senecio quadridentatus</u> (LH) <u>Themeda triandra</u> (L) <u>Thysanotus paterosii</u> (SC) <u>Vittadinia cuneata</u> (MH) <u>Wahlenbergia stricta</u> (LH)	Shrubs <u>Deane's Wattle</u> <u>Red-stem Wattle</u> <u>Varnish Wattle</u> <u>Honey-pots</u> <u>Sweet Bursaria</u> <u>Common Cassinia</u> <u>Blue Finger-flower</u> <u>Narrow-leaf Bitter-pea</u> <u>Grey Parrot-pea</u> <u>Austral Indigo</u>	Soft Twig-sedge <u>Tall Sedge</u> <u>Variable Billy-buttons</u> <u>Common Love-grass</u> <u>Clustered Cupweed</u> <u>Creeping Raspwort</u> <u>Narrow Goodenia</u> <u>Joint-leaf Rush</u> <u>Broad-leaf Rush</u> <u>Broom Rush</u> <u>Common Bog-sedge</u>
(MS) Medium 1-5m			
(SS) Small 20cm-1m			
(PS) Prostrate <50cm			
Groundcovers	Groundcovers <u>Knobby Spear-grass</u> <u>Bulbine Lily</u> <u>Knob Sedge</u> <u>Pale Flax-lily</u> <u>Black-anther Flax-lily</u> <u>Austral Cranesbill</u> <u>Twining Glycine</u> <u>Scaly Buttons</u> <u>Wattle Mat-rush</u> <u>Five-awned Spear-grass</u> <u>Cotton Fireweed</u> <u>Kangaroo Grass</u> <u>Twining Fringe-lily</u> <u>Fuzzy New Holland Daisy</u> <u>Tall Bluebell</u>	Groundcovers <u>Hill Wallaby-grass</u> <u>Dense Spear-grass</u> <u>Red-leg Grass</u> <u>Milkmaids</u> <u>Clustered Everlasting</u> <u>Black-anther Flax-lily</u> <u>Common Wheat-grass</u> <u>Austral Cranesbill</u> <u>Twining Glycine</u> <u>Purple Coral-pea</u> <u>Wattle Mat-rush</u> <u>Rough Tussock-grass</u> <u>Grey Fireweed</u> <u>Kangaroo Grass</u> <u>Tall Bluebell</u>	This community varies greatly. Manage sites to protect existing species and only introduce new ones with expert advice.
(L) Large grass-like plant >1m			
(M) Medium grass-like plant 10cm-1m			
(T) Tiny grass-like plant <10cm			
(LH) Large herb-50cm (MH) Medium herb 5-20cm			
(SH) Small or prostrate herb < 5cm			
(GF) Ground Fern			
(SC) Scrambler/ climber			

¹ Sandy, well-drained soils



The State of Victoria does not warrant the accuracy or completeness of information on this map. Any person using or relying upon such information does so on the basis that the State of Victoria shall bear no responsibility or liability whatsoever for any errors, faults, defects or omissions in the information.

Figure 1. Map of the Chiltern' zone. This satellite image has an overlay of the mapped distribution of the Ecological Vegetation Classes for this zone. The mapping should only be used as an *indication* of which EVCs *may* occur there. To decide which EVCs relate to your property, use the Landform Descriptions and Geology & Soils information in the profiles. To view and print an EVC map for your area see the DSE website (www.dse.vic.gov.au) Select 'Interactive Maps' then 'Biodiversity Interactive Map' and choose the appropriate layers.

References:

Berwick, S. (unpublished) *Pre-1750 EVC mapping, Goulburn Broken catchment*, Department of Natural Resources and Environment, Benalla.
 Viridans Pty Ltd. (2004) *Victorian Fauna Display*, Viridans Pty Ltd., Melbourne.
 Whyte, S. (2003) *Revegetation Techniques A guide for establishing native vegetation in Victoria*, Greening Australia, Horsham.

Acknowledgments:



This project has been co-funded by DSE and Natural Heritage Trust. Our thanks to community and organisational members who have assisted with comments.
 Profile drawings created by Vincent Drane of Spring Creek Studio.

Edited by Sue Berwick and Mary Titcomb, Department of Sustainability and Environment
 Published by the Victorian Government Department of Sustainability and Environment Melbourne, July 2007
 © The State of Victoria Department of Sustainability and Environment 2007
 This publication is copyright. No part may be reproduced by any process except in accordance with the provisions of the Copyright Act 1968.
 Authorised by the Victorian Government, Melbourne. Printed by Stream Solutions.
 For further information about this publication, contact: Department of Sustainability and Environment, Wodonga (02) 6043 7900
 ISBN 978-1-74152-946-3 (print); ISBN 978-1-74152-952-4 (online); ISBN 978-1-74152-999-9 (CD-ROM)
Disclaimer

This publication may be of assistance to you but the State of Victoria and its employees do not guarantee that the publication is without flaw of any kind or is wholly appropriate for your particular purposes and therefore disclaims all liability for any error, loss or other consequence which may arise from you relying on any information in this publication.