

Mid Kiewa Native Plant Lists

Including Allans Flat, Yackandandah, Kergunyah, Gundowring, Mudgeegonga

About this brochure



This brochure provides lists of plant species that are locally native (indigenous) to the **Mid Kiewa area** (see back page for map). These species are grouped into lists for different profiles of the landscape/topography, representing the different vegetation types (Ecological Vegetation Classes, EVCs) that occur there. The species in **bold** are those which are more common, and underlined species are those that are more likely to be available from nurseries that sell indigenous plants. The lists are cross-referenced with **EVC benchmarks** (see references).

Why restore and revegetate?



These activities provide for: shelter for stock, pasture or crops; creating/ enhancing the habitat for native species; improving water quality; land protection; farm forestry (including firewood, sawlogs); meeting legislative requirements (eg. offsets), and aesthetics.

What do you want to achieve?



The purpose of your works helps dictate the following; *where*, eg. extend existing native vegetation, link between patches, corner of paddock, along drainage line, in gully etc; *how*, eg. planting, direct seeding or natural regeneration; the *on going management* required; *what species* you revegetate with; the *density* (how many plants); and the *arrangement*, eg. rows versus random, shrubs around existing trees.

Make the most of your efforts!



The long term survival, effective regeneration and other benefits can easily be optimised, whatever the purpose of your efforts. Expanding the range of plant types to include shrubs, grasses and wildflowers helps keep your native trees healthy and provides the building materials, furniture and food needed by local native animals. These improve the chance of restoring plant-animal interactions such as pollination and insect control, assisting your restoration site and surrounding areas to be self-sustaining.

How do I go about it?



Preparing the ground, undertaking pest and weed control, selection of plants, spacing and arrangement of plants, method of planting, watering in, mulching, guarding, fencing and monitoring are all factors which will vary according to your site and purpose. The book *Revegetation Techniques A guide to establishing native vegetation in Victoria* (Greening Australia 2003) is available from the website: www.greeningaustralia.com.au

Order in advance



To maximise your range of species, order at least 12 months in advance. Nurseries can grow many species if they know you want them. They can also ensure that the seed is local to your site (plants genetically adapted to your conditions survive the best). So plan and order. If you collect your own seed, this can be given to nurseries to grow. Then you can be sure of how local your local plants are! A list of nurseries supplying indigenous plants in the NE Region can be found in *Revegetation Resources Directory*, DSE (2005) on the NECMA website: www.necma.vic.gov.au

Choosing the best list for a site



Selecting the appropriate list will ensure that the species are suited to the conditions. Consider: *where* you are in the landscape/ topography (eg. floodplain, flats, rises); the soil type and remnant vegetation near by. Based on this and current site conditions, select the best suited profile/s, using species descriptions as a guide.

More Information



The following references are available on the DPI & DSE websites (www.dpi.vic.gov.au; www.dse.vic.gov.au) and at their offices
Wodonga McKoy St (02) 60437900
Wangaratta Cnr Ovens and Ford St (03) 57238600

General: DSE (2006) *Native Vegetation Revegetation planting standards - Guidelines for establishing native vegetation for net gain accounting*, DSE, East Melbourne.
Perry, D and Butler, M. (2004) *Tree planting and aftercare*, LC0104, DPI, Melbourne.

Biodiversity: Platt, S. (2002) *How to Plan Wildlife Landscapes*, DNRE, Melbourne.

Riparian Revegetation: Price, P. & Lovett, S. (2002) 'Managing riparian land', 1, Land & Water Australia Canberra.

Farm Forestry: Hajek, C. (2002) *Farm forestry / agroforestry: What is it?*, AG0790, DPI, Horsham.

Shelter Belts: Johnson H. and Brandle, James (2003) *Shelterbelt design*, LC 0136, DPI, Stawell.

Salinity: DPI (2005) *Frequently Asked Question About Salinity Tree Planting Incentive Projects* NESSI

EVC Descriptions and Benchmarks: www.dse.vic.gov.au under 'Conservation and Environment' go to 'Native Vegetation Information for Victoria'.

DNRE (2002), *Managing Your Patch of Bush*, Wodonga.

Species Descriptions: www.csu.edu.au/herbarium/riverina

Mid Kiewa - Floodplain - Plains - Gentle Slopes and Valleys



Landform	Floodplain, terraces	Plains	Valleys in Hills and Hill Slopes
Description	Active riverine floodplain with frequent, short duration flooding	Plains; elevated plains; alluvial terraces not actively flooding	Broad valley bottoms, footslopes and moderate hill slopes
Geology & Soils	Alluvial sediments: red-brown loams to sandy clay loams; grey clays in wetlands	Alluvial sediments: brown-red soils; black uniform loams; poorly drained grey clay soils	Colluvium derived from various geologies: well-drained red-brown gradational soils to loam soils
EVC	Floodplain Riparian Woodland / Riverine Grassy Woodland	Plains Grassy Woodland	Valley Grassy Forest
Location Example	No local remnants left	No local remnants left	Osbornes Flat Rd 2.5km from Yackandandah
Legend	Trees > 5m	Trees > 5m	Trees > 5m
Underline text = likely to be available from nurseries	<u>Acacia dealbata</u> (UT) <u>Silver Wattle</u>	<u>Acacia dealbata</u> (UT) <u>Silver Wattle</u>	<u>Acacia dealbata</u> (UT) <u>Silver Wattle</u>
Bold text = more common in EVC	<u>Acacia melanoxylon</u> (UT) <u>Blackwood</u>	<u>Acacia implexa</u> (UT) <u>Lightwood</u>	<u>Acacia implexa</u> (UT) <u>Lightwood</u>
Trees	<u>Acacia praxivissima</u> (UT) <u>Ovens Wattle</u>	<u>Acacia praxivissima</u> (UT) <u>Ovens Wattle</u>	<u>Acacia praxivissima</u> (UT) <u>Ovens Wattle</u>
Woody plants (include large shrubs) > 5m (UT) Understorey	<u>Eucalyptus camaldulensis</u> <u>River Red-gum</u>	<u>Eucalyptus camaldulensis</u> <u>River Red-gum</u>	<u>Eucalyptus camaldulensis</u> <u>River Red-gum</u>
Trees = trees or large shrubs > 5m that do not form part of the canopy	<u>Bursaria spinosa subsp. lasiophylla</u> ¹ (MS) <u>Hairy Bursaria</u> ¹	<u>Bursaria spinosa subsp. lasiophylla</u> ¹ (MS) <u>Hairy Bursaria</u> ¹	<u>Bursaria spinosa subsp. lasiophylla</u> ¹ (MS) <u>Hairy Bursaria</u> ¹
Shrubs	<u>Callistemon sieberi</u> (MS) <u>River Bottlebrush</u>	<u>Callistemon sieberi</u> (MS) <u>River Bottlebrush</u>	<u>Callistemon sieberi</u> (MS) <u>River Bottlebrush</u>
Woody plants (include large shrubs) > 5m (UT) Understorey	<u>Cassinia aculeata</u> ^{1,2} (MS) <u>Common Cassinia</u>	<u>Cassinia aculeata</u> ² (MS) <u>Common Cassinia</u>	<u>Cassinia aculeata</u> ² (MS) <u>Common Cassinia</u>
Trees = trees or large shrubs > 5m that do not form part of the canopy	<u>Dillwynia cinerascens</u> ¹ (SS) <u>Burgan</u> ²	<u>Dillwynia cinerascens</u> (SS) <u>Burgan</u> ²	<u>Dillwynia cinerascens</u> (SS) <u>Burgan</u> ²
Groundcovers	<u>Leptospermum continentale</u> (MS) <u>Prickly Tea-tree</u>	<u>Leptospermum continentale</u> (MS) <u>Prickly Tea-tree</u>	<u>Leptospermum continentale</u> (MS) <u>Prickly Tea-tree</u>
Woody plants (include large shrubs) > 5m (UT) Understorey	<u>Leptospermum obovatum</u> (MS) <u>River Tea-tree</u>	<u>Leptospermum obovatum</u> (MS) <u>River Tea-tree</u>	<u>Leptospermum obovatum</u> (MS) <u>River Tea-tree</u>
Trees = trees or large shrubs > 5m that do not form part of the canopy	<u>Meliclytus dentatus</u> ² (MS) <u>Tree Violet</u> ²	<u>Meliclytus dentatus</u> ² (MS) <u>Tree Violet</u> ²	<u>Meliclytus dentatus</u> ² (MS) <u>Tree Violet</u> ²
Shrubs	<u>Acaena novae-zelandiae</u> (MH) <u>Bidgee-widgee</u>	<u>Acaena novae-zelandiae</u> (MH) <u>Bidgee-widgee</u>	<u>Acaena novae-zelandiae</u> (MH) <u>Bidgee-widgee</u>
Woody plants (include large shrubs) > 5m (UT) Understorey	<u>Alternanthera denticulata</u> (MH) <u>Lesser Joyweed</u>	<u>Alternanthera denticulata</u> (MH) <u>Lesser Joyweed</u>	<u>Alternanthera denticulata</u> (MH) <u>Lesser Joyweed</u>
Trees = trees or large shrubs > 5m (UT) Understorey	<u>Carex appressa</u> (L) <u>Tall Sedge</u>	<u>Carex appressa</u> (L) <u>Tall Sedge</u>	<u>Carex appressa</u> (L) <u>Tall Sedge</u>
Woody plants (include large shrubs) > 5m (UT) Understorey	<u>Carex inversa</u> (M) <u>Knob Sedge</u>	<u>Carex inversa</u> (M) <u>Knob Sedge</u>	<u>Carex inversa</u> (M) <u>Knob Sedge</u>
Trees = trees or large shrubs > 5m (UT) Understorey	<u>Centipeda cunninghamii</u> (MH) <u>Common Sneezeweed</u>	<u>Centipeda cunninghamii</u> (MH) <u>Common Sneezeweed</u>	<u>Centipeda cunninghamii</u> (MH) <u>Common Sneezeweed</u>
Woody plants (include large shrubs) > 5m (UT) Understorey	<u>Eleocharis acuta</u> (M) <u>Common Spike-sedge</u>	<u>Eleocharis acuta</u> (M) <u>Common Spike-sedge</u>	<u>Eleocharis acuta</u> (M) <u>Common Spike-sedge</u>
Trees = trees or large shrubs > 5m (UT) Understorey	<u>Eleocharis gracilis</u> (M) <u>Slender Spike-sedge</u>	<u>Eleocharis gracilis</u> (M) <u>Slender Spike-sedge</u>	<u>Eleocharis gracilis</u> (M) <u>Slender Spike-sedge</u>
Woody plants (include large shrubs) > 5m (UT) Understorey	<u>Eragrostis brownii</u> (M) <u>Common Love-grass</u>	<u>Eragrostis brownii</u> (M) <u>Common Love-grass</u>	<u>Eragrostis brownii</u> (M) <u>Common Love-grass</u>
Trees = trees or large shrubs > 5m (UT) Understorey	<u>Juncus amabilis</u> (M) <u>Hollow Rush</u>	<u>Juncus amabilis</u> (M) <u>Hollow Rush</u>	<u>Juncus amabilis</u> (M) <u>Hollow Rush</u>
Woody plants (include large shrubs) > 5m (UT) Understorey	<u>Juncus australis</u> (L) <u>Austral Rush</u>	<u>Juncus australis</u> (L) <u>Austral Rush</u>	<u>Juncus australis</u> (L) <u>Austral Rush</u>
Trees = trees or large shrubs > 5m (UT) Understorey	<u>Juncus bufonius</u> (M) <u>Toad Rush</u>	<u>Juncus bufonius</u> (M) <u>Toad Rush</u>	<u>Juncus bufonius</u> (M) <u>Toad Rush</u>
Woody plants (include large shrubs) > 5m (UT) Understorey	<u>Juncus flavidus</u> (L) <u>Gold Rush</u>	<u>Juncus flavidus</u> (L) <u>Gold Rush</u>	<u>Juncus flavidus</u> (L) <u>Gold Rush</u>
Trees = trees or large shrubs > 5m (UT) Understorey	<u>Juncus subsecundus</u> (M) <u>Finger Rush</u>	<u>Juncus subsecundus</u> (M) <u>Finger Rush</u>	<u>Juncus subsecundus</u> (M) <u>Finger Rush</u>
Woody plants (include large shrubs) > 5m (UT) Understorey	<u>Lachnagrostis aemula</u> (M) <u>Leafy Blown-grass</u>	<u>Lachnagrostis aemula</u> (M) <u>Leafy Blown-grass</u>	<u>Lachnagrostis aemula</u> (M) <u>Leafy Blown-grass</u>
Trees = trees or large shrubs > 5m (UT) Understorey	<u>Lythrum hyssopifolia</u> (MH) <u>Small Loosestrife</u>	<u>Lythrum hyssopifolia</u> (MH) <u>Small Loosestrife</u>	<u>Lythrum hyssopifolia</u> (MH) <u>Small Loosestrife</u>
Woody plants (include large shrubs) > 5m (UT) Understorey	<u>Mentha saturoides</u> (SH) <u>Creeping mint</u>	<u>Mentha saturoides</u> (SH) <u>Creeping mint</u>	<u>Mentha saturoides</u> (SH) <u>Creeping mint</u>
Trees = trees or large shrubs > 5m (UT) Understorey	<u>Microlaena stipoides</u> (M) <u>Weeping Grass</u>	<u>Microlaena stipoides</u> (M) <u>Weeping Grass</u>	<u>Microlaena stipoides</u> (M) <u>Weeping Grass</u>
Woody plants (include large shrubs) > 5m (UT) Understorey	<u>Persicaria decipiens</u> (LH) <u>Slender Knotweed</u>	<u>Persicaria decipiens</u> (LH) <u>Slender Knotweed</u>	<u>Persicaria decipiens</u> (LH) <u>Slender Knotweed</u>
Trees = trees or large shrubs > 5m (UT) Understorey	<u>Phragmites australis</u> (L) <u>Common Reed</u>	<u>Phragmites australis</u> (L) <u>Common Reed</u>	<u>Phragmites australis</u> (L) <u>Common Reed</u>
Woody plants (include large shrubs) > 5m (UT) Understorey	<u>Poa labillardierei</u> (M) <u>Common Tussock-grass</u>	<u>Poa labillardierei</u> (M) <u>Common Tussock-grass</u>	<u>Poa labillardierei</u> (M) <u>Common Tussock-grass</u>
Trees = trees or large shrubs > 5m (UT) Understorey	<u>Schoenus apogon</u> (M) <u>Common Bog-sedge</u>	<u>Schoenus apogon</u> (M) <u>Common Bog-sedge</u>	<u>Schoenus apogon</u> (M) <u>Common Bog-sedge</u>
Woody plants (include large shrubs) > 5m (UT) Understorey	<u>Pseudoraphis spinescens</u> (M) <u>Spiny Mud-grass</u>	<u>Pseudoraphis spinescens</u> (M) <u>Spiny Mud-grass</u>	<u>Pseudoraphis spinescens</u> (M) <u>Spiny Mud-grass</u>
Trees = trees or large shrubs > 5m (UT) Understorey	<u>Triglochin procera</u> (L) <u>Water Ribbons</u>	<u>Triglochin procera</u> (L) <u>Water Ribbons</u>	<u>Triglochin procera</u> (L) <u>Water Ribbons</u>
Woody plants (include large shrubs) > 5m (UT) Understorey	<u>Arthropodium strictum</u> (LH) <u>Chocolate Lily</u>	<u>Arthropodium strictum</u> (LH) <u>Chocolate Lily</u>	<u>Arthropodium strictum</u> (LH) <u>Chocolate Lily</u>
Trees = trees or large shrubs > 5m (UT) Understorey	<u>Austrodanthonia caespitosa</u> (M) <u>Common Wallaby-grass</u>	<u>Austrodanthonia caespitosa</u> (M) <u>Common Wallaby-grass</u>	<u>Austrodanthonia caespitosa</u> (M) <u>Common Wallaby-grass</u>
Woody plants (include large shrubs) > 5m (UT) Understorey	<u>Austrodanthonia pilosa</u> (M) <u>Velvet Wallaby-grass</u>	<u>Austrodanthonia pilosa</u> (M) <u>Velvet Wallaby-grass</u>	<u>Austrodanthonia pilosa</u> (M) <u>Velvet Wallaby-grass</u>
Trees = trees or large shrubs > 5m (UT) Understorey	<u>Aurostipa scabra</u> (M) <u>Rough Spear-grass</u>	<u>Aurostipa scabra</u> (M) <u>Rough Spear-grass</u>	<u>Aurostipa scabra</u> (M) <u>Rough Spear-grass</u>
Woody plants (include large shrubs) > 5m (UT) Understorey	<u>Bothriochloa macra</u> (M) <u>Red-leg Grass</u>	<u>Bothriochloa macra</u> (M) <u>Red-leg Grass</u>	<u>Bothriochloa macra</u> (M) <u>Red-leg Grass</u>
Trees = trees or large shrubs > 5m (UT) Understorey	<u>Bulbine bulbosa</u> (MH) <u>Bulbine Lily</u>	<u>Bulbine bulbosa</u> (MH) <u>Bulbine Lily</u>	<u>Bulbine bulbosa</u> (MH) <u>Bulbine Lily</u>
Woody plants (include large shrubs) > 5m (UT) Understorey	<u>Carex breviculmis</u> (M) <u>Common Grass-sedge</u>	<u>Carex breviculmis</u> (M) <u>Common Grass-sedge</u>	<u>Carex breviculmis</u> (M) <u>Common Grass-sedge</u>
Trees = trees or large shrubs > 5m (UT) Understorey	<u>Carex inversa</u> (M) <u>Knob Sedge</u>	<u>Carex inversa</u> (M) <u>Knob Sedge</u>	<u>Carex inversa</u> (M) <u>Knob Sedge</u>
Woody plants (include large shrubs) > 5m (UT) Understorey	<u>Chrysocephalum apiculatum</u> (LH) <u>Common Everlasting</u>	<u>Chrysocephalum apiculatum</u> (LH) <u>Common Everlasting</u>	<u>Chrysocephalum apiculatum</u> (LH) <u>Common Everlasting</u>
Trees = trees or large shrubs > 5m (UT) Understorey	<u>Dianella longifolia</u> (M) <u>Pale Flax-lily</u>	<u>Dianella longifolia</u> (M) <u>Pale Flax-lily</u>	<u>Dianella longifolia</u> (M) <u>Pale Flax-lily</u>
Woody plants (include large shrubs) > 5m (UT) Understorey	<u>Dianella revoluta</u> (M) <u>Black-anther Flax-lily</u>	<u>Dianella revoluta</u> (M) <u>Black-anther Flax-lily</u>	<u>Dianella revoluta</u> (M) <u>Black-anther Flax-lily</u>
Trees = trees or large shrubs > 5m (UT) Understorey	<u>Elymus scaber</u> (M) <u>Common Wheat-grass</u>	<u>Elymus scaber</u> (M) <u>Common Wheat-grass</u>	<u>Elymus scaber</u> (M) <u>Common Wheat-grass</u>
Woody plants (include large shrubs) > 5m (UT) Understorey	<u>Geranium solanderi</u> (MH) <u>Austral Cranesbill</u>	<u>Geranium solanderi</u> (MH) <u>Austral Cranesbill</u>	<u>Geranium solanderi</u> (MH) <u>Austral Cranesbill</u>
Trees = trees or large shrubs > 5m (UT) Understorey	<u>Glycine clandestina</u> (SC) <u>Twining Glycine</u>	<u>Glycine clandestina</u> (SC) <u>Twining Glycine</u>	<u>Glycine clandestina</u> (SC) <u>Twining Glycine</u>
Woody plants (include large shrubs) > 5m (UT) Understorey	<u>Leptorhynchos squamatus</u> (MH) <u>Scaly Buttons</u>	<u>Leptorhynchos squamatus</u> (MH) <u>Scaly Buttons</u>	<u>Leptorhynchos squamatus</u> (MH) <u>Scaly Buttons</u>
Trees = trees or large shrubs > 5m (UT) Understorey	<u>Lomandra filiformis</u> (M) <u>Wattle Mat-rush</u>	<u>Lomandra filiformis</u> (M) <u>Wattle Mat-rush</u>	<u>Lomandra filiformis</u> (M) <u>Wattle Mat-rush</u>
Woody plants (include large shrubs) > 5m (UT) Understorey	<u>Lomandra longifolia</u> (L) <u>Weeping Grass</u>	<u>Lomandra longifolia</u> (L) <u>Weeping Grass</u>	<u>Lomandra longifolia</u> (L) <u>Weeping Grass</u>
Trees = trees or large shrubs > 5m (UT) Understorey	<u>Microlaena stipoides</u> (M) <u>Grey Tussock-grass</u>	<u>Microlaena stipoides</u> (M) <u>Grey Tussock-grass</u>	<u>Microlaena stipoides</u> (M) <u>Grey Tussock-grass</u>
Woody plants (include large shrubs) > 5m (UT) Understorey	<u>Poa sieberiana</u> (M) <u>Kangaroo Grass</u>	<u>Poa sieberiana</u> (M) <u>Kangaroo Grass</u>	<u>Poa sieberiana</u> (M) <u>Kangaroo Grass</u>
Trees = trees or large shrubs > 5m (UT) Understorey	<u>Tricoryne elatior</u> (LH) <u>Yellow Rush-lily</u>	<u>Tricoryne elatior</u> (LH) <u>Yellow Rush-lily</u>	<u>Tricoryne elatior</u> (LH) <u>Yellow Rush-lily</u>
Woody plants (include large shrubs) > 5m (UT) Understorey	<u>Wahlenbergia stricta</u> (LH) <u>Tall Bluebell</u>	<u>Wahlenbergia stricta</u> (LH) <u>Tall Bluebell</u>	<u>Wahlenbergia stricta</u> (LH) <u>Tall Bluebell</u>
Woody plants (include large shrubs) > 5m (UT) Understorey	<u>Acacia rubida</u> (MS) <u>Red-stem Wattle</u>	<u>Acacia rubida</u> (MS) <u>Red-stem Wattle</u>	<u>Acacia rubida</u> (MS) <u>Red-stem Wattle</u>
Trees = trees or large shrubs > 5m (UT) Understorey	<u>Bursaria spinosa subsp. lasiophylla</u> (MS) <u>Hairy Bursaria</u>	<u>Bursaria spinosa subsp. lasiophylla</u> (MS) <u>Hairy Bursaria</u>	<u>Bursaria spinosa subsp. lasiophylla</u> (MS) <u>Hairy Bursaria</u>
Woody plants (include large shrubs) > 5m (UT) Understorey	<u>Cassinia aculeata</u> ² (MS) <u>Common Cassinia</u>	<u>Cassinia aculeata</u> ² (MS) <u>Common Cassinia</u>	<u>Cassinia aculeata</u> ² (MS) <u>Common Cassinia</u>
Trees = trees or large shrubs > 5m (UT) Understorey	<u>Hakea microcarpa</u> (MS) <u>Small-fruit Hakea</u>	<u>Hakea microcarpa</u> (MS) <u>Small-fruit Hakea</u>	<u>Hakea microcarpa</u> (MS) <u>Small-fruit Hakea</u>
Woody plants (include large shrubs) > 5m (UT) Understorey	<u>Hibbertia riparia</u> (SS) <u>Erect Guinea-flower</u>	<u>Hibbertia riparia</u> (SS) <u>Erect Guinea-flower</u>	<u>Hibbertia riparia</u> (SS) <u>Erect Guinea-flower</u>
Trees = trees or large shrubs > 5m (UT) Understorey	<u>Hovea heterophylla</u> (SS) <u>Common Hovea</u>	<u>Hovea heterophylla</u> (SS) <u>Common Hovea</u>	<u>Hovea heterophylla</u> (SS) <u>Common Hovea</u>
Woody plants (include large shrubs) > 5m (UT) Understorey	<u>Indigofera australis</u> (MS) <u>Austral Indigo</u>	<u>Indigofera australis</u> (MS) <u>Austral Indigo</u>	<u>Indigofera australis</u> (MS) <u>Austral Indigo</u>
Trees = trees or large shrubs > 5m (UT) Understorey	<u>Meliclytus dentatus</u> ² (MS) <u>Tree Violet</u> ²	<u>Meliclytus dentatus</u> ² (MS) <u>Tree Violet</u> ²	<u>Meliclytus dentatus</u> ² (MS) <u>Tree Violet</u> ²
Woody plants (include large shrubs) > 5m (UT) Understorey	<u>Spyridium parvifolium</u> (MS) <u>Dusty Miller</u>	<u>Spyridium parvifolium</u> (MS) <u>Dusty Miller</u>	<u>Spyridium parvifolium</u> (MS) <u>Dusty Miller</u>
Groundcovers	<u>Arthropodium strictum</u> (LH) <u>Chocolate Lily</u>	<u>Arthropodium strictum</u> (LH) <u>Chocolate Lily</u>	<u>Arthropodium strictum</u> (LH) <u>Chocolate Lily</u>
Woody plants (include large shrubs) > 5m (UT) Understorey	<u>Austrodanthonia penicillata</u> (M) <u>Slender Wallaby-grass</u>	<u>Austrodanthonia penicillata</u> (M) <u>Slender Wallaby-grass</u>	<u>Austrodanthonia penicillata</u> (M) <u>Slender Wallaby-grass</u>
Trees = trees or large shrubs > 5m (UT) Understorey	<u>Bulbine bulbosa</u> (MH) <u>Bulbine Lily</u>	<u>Bulbine bulbosa</u> (MH) <u>Bulbine Lily</u>	<u>Bulbine bulbosa</u> (MH) <u>Bulbine Lily</u>
Woody plants (include large shrubs) > 5m (UT) Understorey	<u>Carex appressa</u> (L) <u>Tall Sedge</u>	<u>Carex appressa</u> (L) <u>Tall Sedge</u>	<u>Carex appressa</u> (L) <u>Tall Sedge</u>
Trees = trees or large shrubs > 5m (UT) Understorey	<u>Dianella revoluta</u> (M) <u>Black-anther Flax-lily</u>	<u>Dianella revoluta</u> (M) <u>Black-anther Flax-lily</u>	<u>Dianella revoluta</u> (M) <u>Black-anther Flax-lily</u>
Woody plants (include large shrubs) > 5m (UT) Understorey	<u>Elymus scaber</u> (M) <u>Common Wheat-grass</u>	<u>Elymus scaber</u> (M) <u>Common Wheat-grass</u>	<u>Elymus scaber</u> (M) <u>Common Wheat-grass</u>
Trees = trees or large shrubs > 5m (UT) Understorey	<u>Geranium solanderi</u> (MH) <u>Austral Cranesbill</u>	<u>Geranium solanderi</u> (MH) <u>Austral Cranesbill</u>	<u>Geranium solanderi</u> (MH) <u>Austral Cranesbill</u>
Woody plants (include large shrubs) > 5m (UT) Understorey	<u>Glycine clandestina</u> (SC) <u>Twining Glycine</u>	<u>Glycine clandestina</u> (SC) <u>Twining Glycine</u>	<u>Glycine clandestina</u> (SC) <u>Twining Glycine</u>
Trees = trees or large shrubs > 5m (UT) Understorey	<u>Leptorhynchos squamatus</u> (MH) <u>Scaly Buttons</u>	<u>Leptorhynchos squamatus</u> (MH) <u>Scaly Buttons</u>	<u>Leptorhynchos squamatus</u> (MH) <u>Scaly Buttons</u>
Woody plants (include large shrubs) > 5m (UT) Understorey	<u>Lomandra filiformis</u> (M) <u>Wattle Mat-rush</u>	<u>Lomandra filiformis</u> (M) <u>Wattle Mat-rush</u>	<u>Lomandra filiformis</u> (M) <u>Wattle Mat-rush</u>
Trees = trees or large shrubs > 5m (UT) Understorey	<u>Lomandra longifolia</u> (L) <u>Weeping Grass</u>	<u>Lomandra longifolia</u> (L) <u>Weeping Grass</u>	<u>Lomandra longifolia</u> (L) <u>Weeping Grass</u>
Woody plants (include large shrubs) > 5m (UT) Understorey	<u>Microlaena stipoides</u> (M) <u>Grey Tussock-grass</u>	<u>Microlaena stipoides</u> (M) <u>Grey Tussock-grass</u>	<u>Microlaena stipoides</u> (M) <u>Grey Tussock-grass</u>
Trees = trees or large shrubs > 5m (UT) Understorey	<u>Poa sieberiana</u> (M) <u>Kangaroo Grass</u>	<u>Poa sieberiana</u> (M) <u>Kangaroo Grass</u>	<u>Poa sieberiana</u> (M) <u>Kangaroo Grass</u>
Woody plants (include large shrubs) > 5m (UT) Understorey	<u>Tricoryne elatior</u> (LH) <u>Yellow Rush-lily</u>	<u>Tricoryne elatior</u> (LH) <u>Yellow Rush-lily</u>	<u>Tricoryne elatior</u> (LH) <u>Yellow Rush-lily</u>
Trees = trees or large shrubs > 5m (UT) Understorey	<u>Wahlenbergia stricta</u> (LH) <u>Tall Bluebell</u>	<u>Wahlenbergia stricta</u> (LH) <u>Tall Bluebell</u>	<u>Wahlenbergia stricta</u> (LH) <u>Tall Bluebell</u>

¹ Sandy, well-drained soils

² Potential to spread rapidly

Mid Kiewa - Creeklines - Gentle Slopes and Valleys - Moderate Slopes - Moderate to Steep Slopes of Hills, and Mountains



Landform	Creeklines or drainage lines	Valleys in Hills and Hill Slopes	Moderate to Steep Slopes of Hills, and Mountains
Landform Description	Low-gradient ephemeral (seasonal) to intermittent drainage lines on plains and lower slopes of foothills	Broad valley bottoms, footslopes and moderate hill slopes	Moderate to steep dry slopes generally south and east facing
Geology & Soils	Alluvial sediments: sands, clays and silts	Colluvium: well-drained gradational to loam soils	Occurs on northerly and westerly aspects at higher altitude
EVC	Creeklines Grassy Woodland	Valley Grassy Forest	Grassy Dry Forest
Location Example	Lower Basin Ck	Osbornes Flat Rd 2.5km from Yackandandah	Mt. Murramurrangbong, Simpson Gap Rd
Legend	Trees > 5m	Trees > 5m	Trees > 5m
Underline text = likely to be available from nurseries	<u>Acacia dealbata</u> (UT)	<u>Acacia dealbata</u> (UT)	<u>Acacia implexa</u> (UT)
Bold text = more common in EVC	<u>Eucalyptus camaldulensis</u>	<u>Eucalyptus camaldulensis</u>	<u>Eucalyptus blakeyi</u>
Trees	<u>Exocarpos cupressiformis</u> (UT)	<u>Exocarpos cupressiformis</u> (UT)	<u>Exocarpos cupressiformis</u> (UT)
Woody plants (include large shrubs) > 5m (UT) Understorey	<u>Shrubs</u>	<u>Shrubs</u>	<u>Shrubs</u>
Trees = trees or large shrubs > 5m that do not form part of the canopy	<u>Acacia rubida</u> (MS)	<u>Acacia rubida</u> (MS)	<u>Acacia rubida</u> (MS)
Shrubs	<u>Bursaria spinosa subsp. lasiophylla</u>	<u>Bursaria spinosa subsp. lasiophylla</u> (MS)	<u>Bursaria spinosa subsp. lasiophylla</u> (MS)
(MS) Medium 1-5m (SS) Small 20cm-1m (PS) Prostrate <50cm	<u>Callistemon sieberi</u> (MS)	<u>Callistemon sieberi</u> (MS)	<u>Cassinia aculeata</u> ² (MS)
	<u>Dillwynia cinerascens</u> (SS)	<u>Dillwynia cinerascens</u> (SS)	<u>Hibbertia obtusifolia</u> (SS)
	<u>Kunzea ericoides</u> ² (MS)	<u>Kunzea ericoides</u> ² (MS)	<u>Hibbertia riparia</u> (SS)
	<u>Leptospermum continentale</u> (MS)	<u>Leptospermum continentale</u> (MS)	<u>Hovea heterophylla</u> (SS)
	<u>Leptospermum obovatum</u> (MS)	<u>Leptospermum obovatum</u> (MS)	<u>Hovea heterophylla</u> (SS)
	<u>Melicocarpus dentatus</u> ² (MS)	<u>Melicocarpus dentatus</u> ² (MS)	<u>Indigofera australis</u> (MS)
	<u>Pimelea humilis</u> (SS)	<u>Pimelea humilis</u> (SS)	<u>Indigofera australis</u> (MS)
	Groundcovers	Groundcovers	Groundcovers
(L) Large grass-like plant >1m (M) Medium grass-like plant 10cm-1m (T) Tiny grass-like plant <10cm (LH) Large herb>50cm (MH) Medium herb 5-20cm (SH) Small or prostrate herb < 5cm (GF) Ground Fern (SC) Scrambler/climber	<u>Carex appressa</u> (L)	<u>Carex appressa</u> (L)	<u>Austrodanthonia penicillata</u> (M)
	<u>Carex breviculmis</u> (M)	<u>Carex breviculmis</u> (M)	<u>Austrodanthonia pilosa</u> (M)
	<u>Centipeda cunninghamii</u> (MH)	<u>Centipeda cunninghamii</u> (MH)	<u>Austrodanthonia racemosa</u> (M)
	<u>Dianella revoluta</u> (M)	<u>Dianella revoluta</u> (M)	<u>Brunostipa scabra</u> subsp. <i>falicata</i> (M)
	<u>Eleocharis acuta</u> (M)	<u>Eleocharis acuta</u> (M)	<u>Brunostipa australis</u> (MH)
	<u>Elymus scaber</u> (M)	<u>Elymus scaber</u> (M)	<u>Chellanthus austroenuifolia</u> (GF)
	<u>Geranium solanderi</u> (MH)	<u>Geranium solanderi</u> (MH)	<u>Dianella revoluta</u> (M)
	<u>Lachnagrostis filiformis</u> (M)	<u>Lachnagrostis filiformis</u> (M)	<u>Elymus scaber</u> (M)
	<u>Lomandra longifolia</u> (L)	<u>Lomandra longifolia</u> (L)	<u>Geranium solanderi</u> (MH)
	<u>Mentha diemena</u> (MH)	<u>Mentha diemena</u> (MH)	<u>Glycine clandestina</u> (SC)
	<u>Microlaena stipoides</u> (M)	<u>Microlaena stipoides</u> (M)	<u>Hardenbergia violacea</u> (SC)
	<u>Pericaria decipiens</u> (LH)	<u>Pericaria decipiens</u> (LH)	<u>Joycea pallida</u> (L)
	<u>Phragmites australis</u> (L)	<u>Phragmites australis</u> (L)	<u>Poa sieberiana</u> (M)
	<u>Poa labillardierei</u> (M)	<u>Poa sieberiana</u> (M)	<u>Senecio quadridentatus</u> (LH)
	<u>Rubus parvifolius</u> (SC)	<u>Senecio quadridentatus</u> (LH)	<u>Themeda triandra</u> (M)
	<u>Themeda triandra</u> (M)	<u>Themeda triandra</u> (M)	<u>Xerochrysum viscosum</u> (LH)
	<u>Tall Sedge</u>	<u>Tall Sedge</u>	<u>Silver Wattle</u>
	Common Grass-sedge	Common Grass-sedge	Lightwood
	Common Sneezeweed	Common Sneezeweed	Blackwood
	Black-anther Flax-lily	Black-anther Flax-lily	Ovens Wattle
	Common Spike-sedge	Common Spike-sedge	Kurrajong
	Common Wheat-grass	Common Wheat-grass	Blakey's Red-gum
	Austral Cranesbill	Austral Cranesbill	But But
	Common Blown-grass	Common Blown-grass	Brittle Gum
	Spiny-headed Mat-rush	Spiny-headed Mat-rush	Yellow Box
	Slender Mint	Slender Mint	Red Box
	Weeping Grass	Weeping Grass	Candlebark
	Slender Knotweed	Slender Knotweed	Red-stem Wattle
	Common Reed	Common Reed	(MS) Hairy Bursaria
	Common Tussock-grass	Common Tussock-grass	Common Cassinia ²
	Small-leaf Bramble	Small-leaf Bramble	Small-fruit Hakea
	Kangaroo Grass	Kangaroo Grass	Erect Guinea-flower
			Common Hovea
			Austral Indigo
			Tree Violet ²
			Dusty Miller
			Slender Wallaby-grass
			Bulbine Lily
			Tall Sedge
			Black-anther Flax-lily
			Common Wheat-grass
			Austral Cranesbill
			Twining Glycine
			Spiny-headed Mat-rush
			Weeping Grass
			Grey Tussock-grass
			Cotton Fireweed
			Kangaroo Grass

¹ Sandy, well-drained soils

² Potential to spread rapidly

Mid Kiewa - Swift Flowing Streams - Steep Dry Slopes

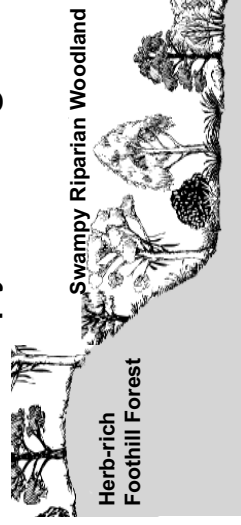


Landform	Streams of Hills and Mountains	Low Hills, Hills, and Mountains	Hills and Mountains
Landform	Streams of the foothills and mountains in the upper part of the catchment	Hill tops and moderate to steep dry slopes generally north and west facing, ~ above 230m	Protected moderate to steep slopes with a higher altitude (above 450m) than Grassy DF and Heathy DF
Description		Range of geologies: cobbles to silts, but mostly deep silty loams	Generally sedimentary or granitic; typically shallow
Geology & Soils			
EVC	Riparian Forest	Heathy Dry Forest	Shrubby Dry Forest
Location Example	Mt. Murrumbarrangbong, Simpson Gap Rd	Mt. Murrumbarrangbong, Simpson Gap Rd	Mt. Murrumbarrangbong, Simpson Gap Rd
Legend	Trees > 5m	Trees > 5m	Trees > 5m
Underline text = likely to be available from nurseries	<u>Acacia dealbata</u> (UT)	<u>Eucalyptus blakelyi</u>	<u>Acacia dealbata</u> (UT)
Bold text = more common in EVC	Blackwood	<u>Eucalyptus dives</u>	Blackwood
Trees	<u>Eucalyptus camphora</u>	<u>Eucalyptus macrotryncha</u>	Broad-leaved Peppermint
Woody plants (include large shrubs) > 5m (UT) Understorey Trees = trees or large shrubs > 5m that do not form part of the canopy	<u>Eucalyptus globulus</u> subsp. <u>bicosata</u>	<u>Eucalyptus polyanthemus</u>	Brittle Gum
	<u>Eucalyptus radiata</u>	<u>Eucalyptus goniocalyx</u>	Candlebark
	<u>Eucalyptus rubida</u>	Shrubs	<u>Exocarpos cupressiformis</u> (UT)
	<u>Eucalyptus viminalis</u>	<u>Acacia gunnii</u> (SS)	Shrubs
	<u>Leptospermum grandifolium</u> (UT)	<u>Acacia rubida</u> (MS)	Acacia rubida (MS)
	Shrubs	Acrotiche serrulata (PS)	Acrotiche serrulata (PS)
	<u>Acrotiche serrulata</u> (PS)	Brachyoloma daphnoides (MS)	Cassinia aculeata ² (MS)
	<u>Baeckea utilis</u> (MS)	<u>Bursaria spinosa</u> subsp. <u>lasioophylla</u>	<u>Coprosma hirtella</u> (MS)
	<u>Cassinia longifolia</u> ² (MS)	<u>Cassinia aculeata</u> ² (MS)	Daviesia latifolia (MS)
	Coprosma quadrifida (MS)	<u>Daviesia latifolia</u> (MS)	Hibbertia obtusifolia (SS)
	<u>Leptospermum lanigerum</u> (MS)	Dillwynia phylloides (SS)	<u>Hovea heterophylla</u> (SS)
	Leptospermum obovatum (MS)	<u>Gompholobium huegelii</u> (SS)	<u>Olearia erubescens</u> (SS)
	<u>Melicxytus dentatus</u> ² (MS)	Grevillea lanigera (MS)	<u>Persoonia chamaepeuce</u> (PS)
	<u>Mirbelia oxylobioides</u> (MS)	Hibbertia riparia (SS)	Platylobium formosum (PS)
	Groundcovers	<u>Hovea heterophylla</u> (SS)	<u>Tetradlea ciliata</u> (SS)
	<u>Acaena novae-zelandiae</u> (MH)	Leucopogon virgatus (SS)	Groundcovers
	<u>Adiantum aethiopicum</u> (GF)	<u>Monotoca scoparia</u> (MS)	<u>Asperula conferta</u> (MH)
	<u>Asperula scoparia</u> (MH)	<u>Platylobium formosum</u> (PS)	Austrodanthonia pilosa (M)
	<u>Blechnum nudum</u> (GF)	<u>Tetradlea ciliata</u> (SS)	<u>Chrysocephalum semipapposum</u>
	Carex appressa (L)	Groundcovers	Dianella revoluta (M)
	<u>Cyperus lucidus</u> (L)	<u>Asperula scoparia</u> (MH)	<u>Dichelachne rara</u> (M)
	Dianella tasmanica (M)	<u>Austrodanthonia pilosa</u> (M)	<u>Glycine clandestina</u> (SC)
	<u>Glycine clandestina</u> (SC)	<u>Chrysocephalum semipapposum</u>	Hardenbergia violacea (SC)
	<u>Lomandra longifolia</u> (L)	<u>Dianella revoluta</u> (M)	Joycea pallida (L)
	Microlaena stipoides (M)	Joycea pallida (L)	Lomandra longifolia subsp. exilis (L)
	<u>Phragmites australis</u> (L)	<u>Lomandra multiflora</u> (M)	<u>Luzula meridionalis</u> (M)
	Poa ensiformis (M)	Sword Tussock-grass	<u>Poa morrisii</u> (M)
	<u>Polystichum proliferum</u> (GF)	<u>Mother Shield-fern</u>	<u>Poa sieberiana</u> (M)
	<u>Rubus panifolius</u> (SC)	<u>Small-leaf Bramble</u>	<u>Senecio linearifolius</u> (LH)
			<u>Fireweed Groundsel</u>
			<u>Common Woodruff</u>
			<u>Velvet Wallaby-grass</u>
			<u>Black-anther Flax-lily</u>
			<u>Common Plumegrass</u>
			<u>Twining Glycine</u>
			Purple Coral-pea
			Silvertop Wallaby-grass
			<u>Cluster-headed Mat-rush</u>
			<u>Soft Tussock-grass</u>
			<u>Grey Tussock-grass</u>
			<u>Fireweed Groundsel</u>

¹ Sandy, well-drained soils

² Potential to spread rapidly

Mid Kiewa - Swampy Drainage Lines - Protected Gullies - Rocky Outcrops



Landform	Swampy Riparian Woodland	Herb-rich Foothill Forest	Grassy Dry Forest	Shrubby Dry Forest
Landform	Broad drainage lines in Hills, Mountains	Protected Gullies in Hills and Mountains	Low Hills to Foothills Areas of Surface Rock	
Description	Broad drainage lines at higher altitudes, lower slopes near streams, waterlogged during winter and spring	Protected gullies and southern slopes 300m-1200m	Areas of surface rock on low hills to foothills	
Geology & Soils	Alluvial: silty sands and gravels, sometimes clays.	Various geologies: red/ brown to brown/grey soils	Granitic: little or no soil	
EVC	Swampy Riparian Woodland	Herb-rich Foothill Forest	Rocky Outcrop Shrubland -Herbland Mosaic	
Location Example	Mt. Murrumurra, Simpson Gap Rd	Mt. Murrumurra	Along De Piazzas Tk, ridge N of end of Butterworths Tk	
Legend	Trees > 5m	Trees > 5m	Trees > 5m	
Underline text = likely to be available from nurseries	<u>Acacia dealbata</u> (UT)	<u>Acacia dealbata</u> (UT)	<u>Acacia implexa</u> (UT)	<u>Lightwood</u>
Bold text = more common in EVC	Acacia melanoxylon (UT)	Acacia melanoxylon (UT)	Eucaalyptus blakelyi	Blakely's Red-gum
Trees	<u>Eucaalyptus bridgesiana</u>	<u>Eucaalyptus dives</u>	Shrubs	
Woody plants (include large shrubs) > 5m (UT) Understorey	<u>Eucaalyptus camphora</u>	<u>Eucaalyptus globulus</u> subsp. <u>bicostata</u>	<u>Acacia gurnii</u> (SS)	<u>Ploughshare Wattle</u>
Trees = trees or large shrubs > 5m that do not form part of the canopy	<u>Eucaalyptus globulus</u> subsp. <u>bicostata</u>	<u>Eucaalyptus radiata</u>	<u>Acacia rubida</u> (MS)	<u>Red-stem Wattle</u>
Shrubs	<u>Leptospermum grandifolium</u> (UT) Mountain Tea-tree	<u>Eucaalyptus rubida</u>	Brachyloma daphnoides (MS)	Daphne Heath
(MS) Medium 1-5m (SS) Small 20cm-1m (PS) Prostrate <50cm	<u>Acrotriche serrulata</u> (PS)	<u>Excocarpus cupressiformis</u> (UT)	<u>Cassinia aculeata</u> ² (MS)	Common Cassinia ²
Groundcovers	<u>Baeckea utilis</u> (MS)	<u>Olearia argophylla</u> (UT)	<u>Cassinia longifolia</u> ² (MS)	Shiny Cassinia ²
(L) Large grass-like plant > 1m (M) Medium grass-like plant 10cm-1m (T) Tiny grass-like plant <10cm (LH) Large herb>50cm (MH) Medium herb 5-20cm (SH) Small or prostrate herb < 5cm (GF) Ground Fern (SC) Scrambler/ climber	<u>Callistemon ptyoides</u> (MS)	Shrubs	<u>Daviesia latifolia</u> (MS)	<u>Hop Bitter-pea</u>
	<u>Coprosma quadrifida</u> (MS)	<u>Acrotriche prostrata</u> (PS)	Dodonaea viscosa subsp. angustissima	(MS) Slender Hop-bush
	<u>Gynatrix pulchella</u> (MS)	<u>Acrotriche serrulata</u> (PS)	<u>Gompholobium huegelii</u> (SS)	Common Wedge-pea
	<u>Leptospermum continentale</u>	<u>Bursaria spinosa</u> subsp. <u>lasiophylla</u>	<u>Kunzea ericoides</u> ² (MS)	Burgan ²
	<u>Leptospermum lanigerum</u>	<u>Cassinia aculeata</u> ² (MS)	<u>Melicococcus dentatus</u> ² (MS)	Tree Violet ²
	<u>Leptospermum obovatum</u>	<u>Cassinia longifolia</u> ² (MS)	<u>Pimelea humilis</u> (SS)	Common Rice-flower
	<u>Olearia erubescens</u> (SS)	<u>Coprosma quadrifida</u> (MS)	Groundcovers	
	<u>Pomaderris velutina</u> (MS)	<u>Hibbertia obtusifolia</u> (SS)	<u>Acaena novae-zelandiae</u> (MH)	Bidgee-widgee
	<u>Prostanthera lasianthos</u> (MS)	<u>Platylobium formosum</u> (PS)	<u>Arisida ramosa</u> (M)	Cane Wire-grass
	Groundcovers	<u>Tetraloche ciliata</u> (SS)	<u>Asperula scoparia</u> (MH)	Prickly Woodruff
	<u>Acaena novae-zelandiae</u> (MH)	Acena novae-zelandiae (MH)	<u>Centrolepis strigosa</u> subsp. <u>strigosa</u> (T)	Hairy Centrolepis
	<u>Asperula scoparia</u> (MH)	<u>Aluja australis</u> (LH)	<u>Cheilanthes australifolia</u> (GF)	Green Rock-fern
	<u>Baumea gunnii</u> (M)	<u>Clematis aristata</u> (SC)	Chrysocephalum apiculatum (LH)	Common Everlasting
	<u>Baumea planifolia</u> (M)	<u>Cymbonotus preissianus</u> (SH)	<u>Cymbonotus preissianus</u> (SH)	Austral Bear's-ear
	<u>Blechnum minus</u> (GF)	<u>Dianella tasmanica</u> (M)	<u>Geranium solanderi</u> (MH)	Austral Cranesbill
	<u>Blechnum nudum</u> (GF)	<u>Dichondra repens</u> (SH)	<u>Glycine clandestina</u> (SC)	Twining Glycine
	<u>Carex appressa</u> (L)	<u>Echinopora ovatus</u> (M)	<u>Gonocarpus tetragynus</u> (MH)	Common Raspwort
	<u>Cyperus lucidus</u> (L)	<u>Geranium potentilloides</u> (MH)	<u>Hardenbergia violacea</u> (SC)	Purple Coral-pea
	<u>Dichondra repens</u> (SH)	<u>Glycine clandestina</u> (SC)	<u>Hydrocotyle laxiflora</u> (SH)	Sinking Pennywort
	<u>Gahnia sieberiana</u> (L)	<u>Lomandra longifolia</u> (L)	Joycea pallida (L)	Silvertop Wallaby-grass
	<u>Gonocarpus micranthus</u> (SH)	<u>Microlaena stipoides</u> (M)	<u>Lomandra filiformis</u> (M)	<u>Wattle Mat-rush</u>
	<u>Lomandra longifolia</u> (L)	<u>Pandorea pandorana</u> (SC)	<u>Lomandra longifolia</u> (L)	Spiny-headed Mat-rush
	<u>Mentha diemenica</u> (MH)	<u>Poa ensiformis</u> (M)	<u>Microlaena stipoides</u> (M)	Austral Stork's-bill
	<u>Microlaena stipoides</u> (M)	<u>Pteridium esculentum</u> (GF)	<u>Pandorea pandorana</u> (SC)	Austral Stork's-bill
	<u>Phragmites australis</u> (L)	<u>Rubus parvifolius</u> (SC)	<u>Poa ensiformis</u> (M)	Blanket Fern
	<u>Poa ensiformis</u> (M)	<u>Styidium graminifolium</u> (M)	<u>Pteridium esculentum</u> (GF)	Grey Tussock-grass
		<u>Themeda triandra</u> (M)	<u>Rubus parvifolius</u> (SC)	Rough Fireweed
		<u>Themeda triandra</u> (M)	<u>Styidium graminifolium</u> (M)	Kangaroo Grass
			<u>Themeda triandra</u> (M)	Sprawling Bluebell

¹ Sandy, well-drained soils
² Potential to spread rapidly

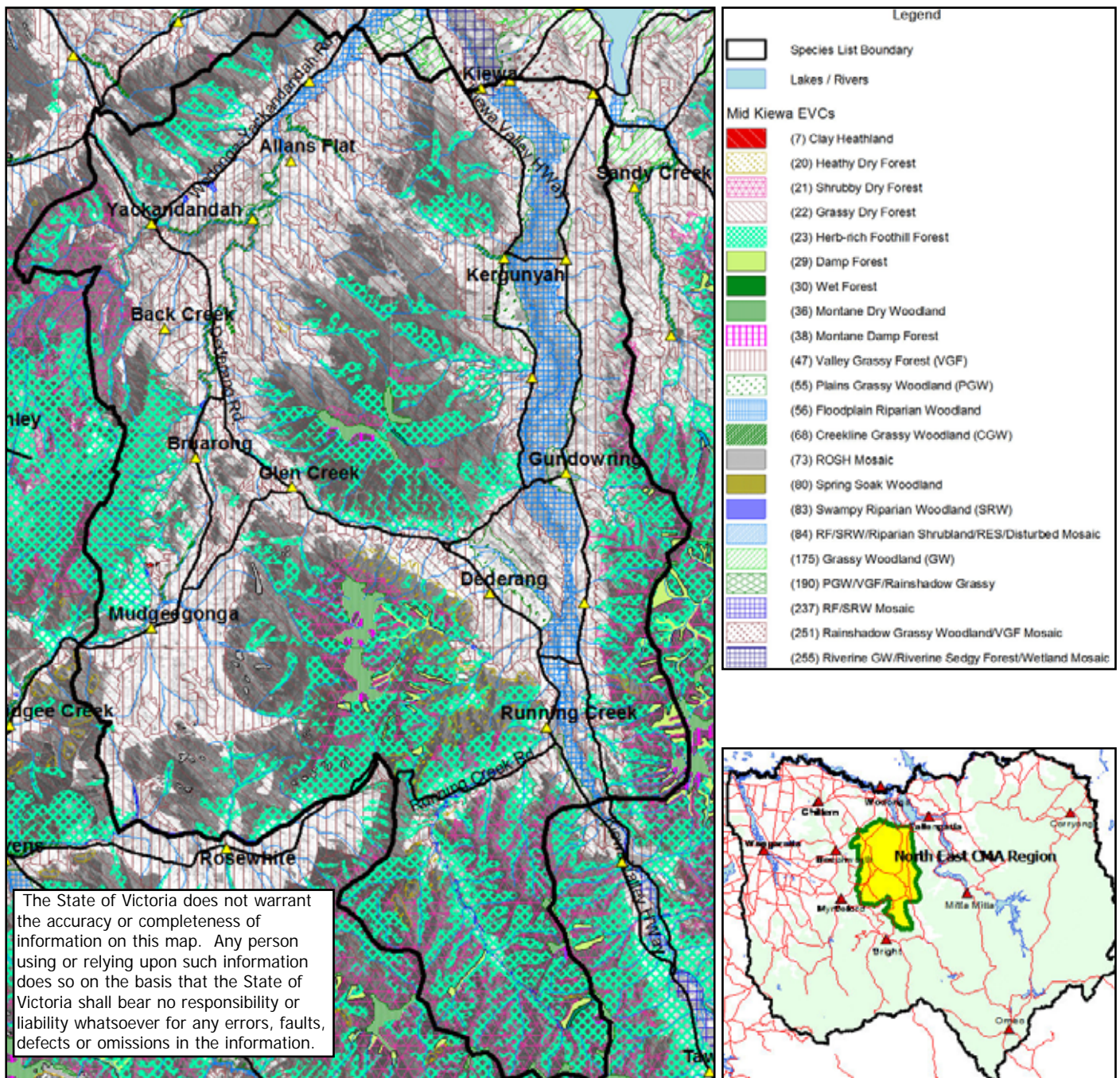


Figure 1. Map of the 'Mid Kiewa' zone.

This satellite image has an overlay of the mapped distribution of the Ecological Vegetation Classes for this zone. The mapping should only be used as an indication of which EVCs may occur there. To decide which EVCs relate to your property, use the Landform Descriptions and Geology & Soils information in the profiles. To view and print an EVC map for your area see the DSE website (www.dse.vic.gov.au) Select 'Interactive Maps' then 'Biodiversity Interactive Map' and choose the appropriate layers.

References:

- Berwick, S. (unpublished) *Pre-1750 EVC mapping, Goulburn Broken catchment*, Department of Natural Resources and Environment, Benalla.
 Viridans Pty Ltd. (2004) *Victorian Fauna Display*, Viridans Pty Ltd., Melbourne.
 Whyte, S. (2003) *Revegetation Techniques A guide for establishing native vegetation in Victoria*, Greening Australia, Horsham.

Acknowledgments:



This project has been co-funded by DSE and Natural Heritage Trust. Our thanks to community and organisational members who have assisted with comments.
 Profile drawings created by Vincent Drane of Spring Creek Studio.

Australian Government

Edited by Mary Titcumb and Sue Berwick, Department of Sustainability and Environment

Published by the Victorian Government Department of Sustainability and Environment Melbourne, July 2007

© The State of Victoria Department of Sustainability and Environment 2007

This publication is copyright. No part may be reproduced by any process except in accordance with the provisions of the Copyright Act 1968.

Authorised by the Victorian Government, Melbourne. Printed by Stream Solutions.

For further information about this publication, contact: Department of Sustainability and Environment, Wodonga (02) 6043 7900

ISBN 978-1-74152-898-5 (print); ISBN 978-1-74152-904-3 (online); ISBN 978-1-74152-999-9 (CD-ROM)

Disclaimer

This publication may be of assistance to you but the State of Victoria and its employees do not guarantee that the publication is without flaw of any kind or is wholly appropriate for your particular purposes and therefore disclaims all liability for any error, loss or other consequence which may arise from you relying on any information in this publication.