

Warby Range Area Native Plant Lists

Including Killawarra, Glenrowan, Lurg, Greta South

About this brochure



This brochure provides lists of plant species that are locally native (indigenous) to the **Warby Range** and adjoining areas (see back page for map). These species are grouped into lists for different profiles of the landscape/topography, representing the different vegetation types (Ecological Vegetation Classes, EVCs) that occur there. The species in **bold** are those which are more common, and underlined species are those that are more likely to be available from nurseries that sell indigenous plants. The lists are cross-referenced with **EVC benchmarks** (see references).

Why restore and revegetate?



These activities provide for: shelter for stock, pasture or crops; creating/ enhancing the habitat for native species; improving water quality; land protection; farm forestry (including firewood, sawlogs); meeting legislative requirements (eg. offsets), and aesthetics.

What do you want to achieve?



The purpose of your works helps dictate the following; *where*, eg. extend existing native vegetation, link between patches, corner of paddock, along drainage line, in gully etc; *how*, eg. planting, direct seeding or natural regeneration; the *on going management* required; *what species* you revegetate with; the *density* (how many plants); and the *arrangement*, eg. rows versus random, shrubs around existing trees.

Make the most of your efforts!



The long term survival, effective regeneration and other benefits can easily be optimised, whatever the purpose of your efforts. Expanding the range of plant types to include shrubs, grasses and wildflowers helps keep your native trees healthy and provides the building materials, furniture and food needed by local native animals. These improve the chance of restoring plant-animal interactions such as pollination and insect control, assisting your restoration site and surrounding areas to be self-sustaining.

How do I go about it?



Preparing the ground, undertaking pest and weed control, selection of plants, spacing and arrangement of plants, method of planting, watering in, mulching, guarding, fencing and monitoring are all factors which will vary according to your site and purpose. The book *Revegetation Techniques A guide to establishing native vegetation in Victoria* (Greening Australia 2003) is available from the website: www.greeningaustralia.com.au

Order in advance



To maximise your range of species, order at least 12 months in advance. Nurseries can grow many species if they know you want them. They can also ensure that the seed is local to your site (plants genetically adapted to your conditions survive the best). So plan and order. If you collect your own seed, this can be given to nurseries to grow. Then you can be sure of how local your local plants are! A list of nurseries supplying indigenous plants in the NE Region can be found in *Revegetation Resources Directory*, DSE (2005) on the NECMA website: www.necma.vic.gov.au

Choosing the best list for a site



Selecting the appropriate list will ensure that the species are suited to the conditions. Consider: *where* you are in the landscape/ topography (eg. floodplain, flats, rises); the soil type and remnant vegetation near by. Based on this and current site conditions, select the best suited profile/s, using species descriptions as a guide.

More Information



The following references are available on the DPI & DSE websites (www.dpi.vic.gov.au; www.dse.vic.gov.au) and at their offices
Wodonga McKoy St (02) 60437900
Wangaratta Cnr Ovens and Ford St (03) 57238600

General: DSE (2006) *Native Vegetation Revegetation planting standards - Guidelines for establishing native vegetation for net gain accounting*, DSE, East Melbourne.
Perry, D and Butler, M. (2004) *Tree planting and aftercare*, LC0104, DPI, Melbourne.

Biodiversity: Platt, S. (2002) *How to Plan Wildlife Landscapes*, DNRE, Melbourne.

Riparian Revegetation: Price, P. & Lovett, S. (2002) 'Managing riparian land', 1, Land & Water Australia Canberra.

Farm Forestry: Hajek, C. (2002) *Farm forestry / agroforestry: What is it?*, AG0790, DPI, Horsham.

Shelter Belts: Johnson H. and Brandle, James (2003) *Shelterbelt design*, LC 0136, DPI, Stawell.

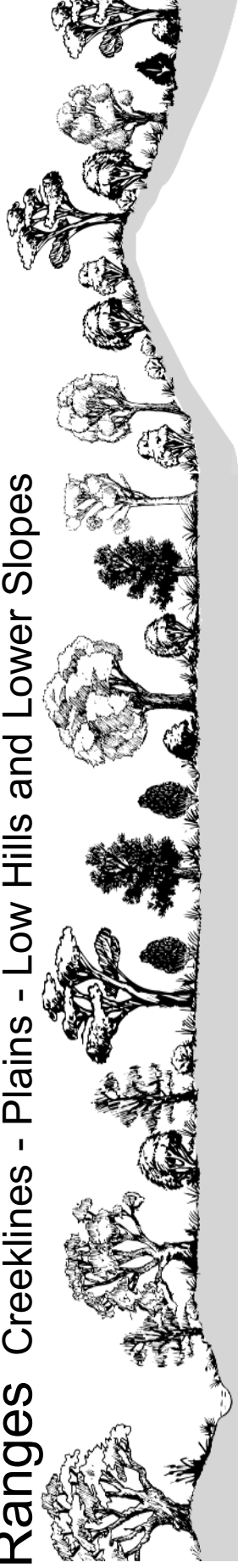
Salinity: DPI (2005) *Frequently Asked Question About Salinity Tree Planting Incentive Projects* NESSI

EVC Descriptions and Benchmarks: www.dse.vic.gov.au under 'Conservation and Environment' go to 'Native Vegetation Information for Victoria'.

DNRE (2002), *Managing Your Patch of Bush*, Wodonga.

Species Descriptions: www.csu.edu.au/herbarium/riverina

Warby Ranges Creeklines - Plains - Low Hills and Lower Slopes



Landform & Description	Creepline	Plain	Low Hills
Geology & Soils	Low-gradient ephemeral (seasonal) to intermittent drainage Alluvial sediments: sands, clays and silts.	Secondary or non-active alluvial plains Alluvial sediments: brown-red soils; black uniform loams; poorly drained grey clay soils	Low hills and gentle lower slopes of foothills Granodiorite, metamorphic gneiss; well-drained red gradational loam; red/ grey contrast soils
EVC	Creepline Grassy Woodland	Plains Grassy Woodland	Rainshadow Grassy Woodland
Location Example	Billabong Creek, Wangaratta-Yarrawonga Rd crossing	North end of Wangaratta Common	Hills south of Mills Rd, Greta West (overstorey only)
Legend	Trees > 5m	Trees > 5m	Trees > 5m
Underline text = likely to be available from nurseries	<u>Acacia dealbata</u> (UT) Silver Wattle <u>Eucalyptus bridgesiana</u> But But / Apple Box <u>Eucalyptus camaldulensis</u> River Red-gum <u>Eucalyptus melliodora</u> Yellow Box <u>Eucalyptus microcarpa</u> Grey Box	<u>Callitris glaucophylla</u> ¹ White Cypress-pine ¹ <u>Eucalyptus albens</u> White Box <u>Eucalyptus bridgesiana</u> But But / Apple Box <u>Eucalyptus camaldulensis</u> River Red Gum <u>Eucalyptus melliodora</u> Yellow Box	<u>Acacia implexa</u> (UT) Lightwood <u>Allocasuarina verticillata</u> Drooping Sheoak <u>Eucalyptus albens</u> White Box <u>Eucalyptus blakelyi</u> Blakely's Red-gum <u>Eucalyptus macrorhyncha</u> Red Stringybark <u>Eucalyptus melliodora</u> Yellow Box <u>Eucalyptus polyanthemus</u> Red Box
Trees	<u>Acacia acinacea</u> (MS) Gold-dust Wattle <u>Acacia pycnantha</u> (MS) Golden Wattle <u>Acacia verniciflua</u> (MS) Varnish Wattle <u>Bursaria spinosa</u> sbsp. <u>spinosa</u> (MS) Sweet Bursaria <u>Callistemon sieberi</u> (MS) River Bottlebrush <u>Cassinia arcuata</u> (MS) Drooping Cassinia <u>Dillwynia cinerascens</u> (SS) Grey Parrot-pea <u>Melaleuca parvistaminea</u> (MS) Rough-barked Honey-myrtle	<u>Acacia acinacea</u> (MS) Gold-dust Wattle <u>Acacia paradoxa</u> (MS) Hedge Wattle <u>Acacia pycnantha</u> (MS) Golden Wattle <u>Bursaria spinosa</u> sbsp. <u>spinosa</u> (MS) Sweet Bursaria <u>Dillwynia cinerascens</u> (SS) Grey Parrot-pea <u>Pimelea curviflora</u> (MS) Curved Rice-flower <u>Pultenaea foliolosa</u> (SS)	Shrubs <u>Acacia acinacea</u> (MS) Gold-dust Wattle <u>Acacia rubida</u> (MS) Gold-dust Wattle <u>Acacia verniciflua</u> (MS) Varnish Wattle <u>Bursaria spinosa</u> sbsp. <u>spinosa</u> (MS) Sweet Bursaria
Woody plants (include large shrubs) > 5m (UT) Understorey Trees = trees or large shrubs > 5m that do not form part of the canopy	Groundcovers <u>Acaena agniphila</u> (MH) Hairy Sheep's Burr <u>Arthropodium strictum</u> (LH) Chocolate Lily <u>Austrodanthonia duttoniana</u> (M) Brown-back Wallaby-grass <u>Bulbine bulbosa</u> (MH) Bulbine Lily <u>Burchardia umbellata</u> (MH) Milkmaids <u>Carex appressa</u> (L) Tall Sedge <u>Cyperus gunnii</u> (L) Flecked Flat-sedge <u>Dianella longifolia</u> (M) Pale Flax-lily <u>Dianella revoluta</u> (M) Black-anther Flax-lily <u>Elymus scaber</u> (M) Common Wheat-grass <u>Juncus flavivulus</u> (L) Gold Rush <u>Juncus holoschoenus</u> (M) Joint-leaf Rush <u>Lomandra filiformis</u> (M) Wattle Mat-rush <u>Lomandra stipoides</u> (M) Weeping Grass <u>Phragmites australis</u> (L) Common Reed	Groundcovers <u>Arthropodium strictum</u> (LH) Chocolate Lily <u>Austrodanthonia caespitosa</u> (M) Common Wallaby-grass <u>Austrodanthonia pilosa</u> (M) Velvet Wallaby-grass <u>Austrodanthonia racemosa</u> (M) Striped Wallaby-grass <u>Austrostipa nodosa</u> (L) Knotty Spear-grass <u>Carex inversa</u> (M) Knob Sedge <u>Chrysocephalum apiculatum</u> (LH) Common Everlasting <u>Dianella longifolia</u> (M) Pale Flax-lily <u>Elymus scaber</u> (M) Common Wheat-grass <u>Eryngium ovinum</u> (LH) Blue Devil <u>Geranium solanderi</u> (MH) Austral Cranesbill <u>Glycine clandestina</u> (SC) Twining Glycine <u>Juncus remotiflorus</u> (M) Diffuse Rush <u>Juncus semisolidus</u> (L) Plains Rush <u>Leptorhynchos squamatus</u> (MH) Scaely Buttons <u>Lomandra filiformis</u> (M) Wattle Mat-rush	Groundcovers <u>Arthropodium strictum</u> (LH) Chocolate Lily <u>Austrodanthonia caespitosa</u> (M) Common Wallaby-grass <u>Austrodanthonia eriantha</u> (M) Hill Wallaby-grass <u>Austrodanthonia racemosa</u> (M) Striped Wallaby-grass <u>Austrostipa densiflora</u> (M) Dense Spear-grass <u>Chrysocephalum semipapposum</u> (LH) Clustered Everlasting <u>Dianella longifolia</u> (M) Pale Flax-lily <u>Dianella revoluta</u> (M) Black-anther Flax-lily <u>Elymus scaber</u> (M) Common Wheat-grass <u>Glycine clandestina</u> (SC) Twining Glycine <u>Hardenbergia violacea</u> (SC) Purple Coral-pea <u>Lomandra filiformis</u> (M) Wattle Mat-rush <u>Poa sieberiana</u> (M) Grey Tussock-grass <u>Senecio bathurstianus</u> (MH) Rough Fireweed <u>Themeda triandra</u> (M) Kangaroo Grass <u>Vitadina cuneata</u> (MH) Fuzzy New Holland Daisy <u>Wahlenbergia stricta</u> (LH) Tall Bluebell
Shrubs	<u>Acacia acinacea</u> (MS) Gold-dust Wattle <u>Acacia pycnantha</u> (MS) Golden Wattle <u>Acacia verniciflua</u> (MS) Varnish Wattle <u>Bursaria spinosa</u> sbsp. <u>spinosa</u> (MS) Sweet Bursaria <u>Callistemon sieberi</u> (MS) River Bottlebrush <u>Cassinia arcuata</u> (MS) Drooping Cassinia <u>Dillwynia cinerascens</u> (SS) Grey Parrot-pea <u>Melaleuca parvistaminea</u> (MS) Rough-barked Honey-myrtle	Shrubs <u>Acacia acinacea</u> (MS) Gold-dust Wattle <u>Acacia paradoxa</u> (MS) Hedge Wattle <u>Acacia pycnantha</u> (MS) Golden Wattle <u>Bursaria spinosa</u> sbsp. <u>spinosa</u> (MS) Sweet Bursaria <u>Dillwynia cinerascens</u> (SS) Grey Parrot-pea <u>Pimelea curviflora</u> (MS) Curved Rice-flower <u>Pultenaea foliolosa</u> (SS)	Shrubs <u>Acacia acinacea</u> (MS) Gold-dust Wattle <u>Acacia rubida</u> (MS) Gold-dust Wattle <u>Acacia verniciflua</u> (MS) Varnish Wattle <u>Bursaria spinosa</u> sbsp. <u>spinosa</u> (MS) Sweet Bursaria
(MS) Medium 1-5m (SS) Small 20cm-1m (PS) Prostrate <50cm	Groundcovers <u>Bulbine bulbosa</u> (MH) Bulbine Lily <u>Burchardia umbellata</u> (MH) Milkmaids <u>Carex appressa</u> (L) Tall Sedge <u>Cyperus gunnii</u> (L) Fleked Flat-sedge <u>Dianella longifolia</u> (M) Pale Flax-lily <u>Dianella revoluta</u> (M) Black-anther Flax-lily <u>Elymus scaber</u> (M) Common Wheat-grass <u>Juncus flavivulus</u> (L) Gold Rush <u>Juncus holoschoenus</u> (M) Joint-leaf Rush <u>Lomandra filiformis</u> (M) Wattle Mat-rush <u>Lomandra stipoides</u> (M) Weeping Grass <u>Phragmites australis</u> (L) Common Reed	Groundcovers <u>Arthropodium strictum</u> (LH) Chocolate Lily <u>Austrodanthonia caespitosa</u> (M) Common Wallaby-grass <u>Austrodanthonia pilosa</u> (M) Velvet Wallaby-grass <u>Austrodanthonia racemosa</u> (M) Striped Wallaby-grass <u>Austrostipa nodosa</u> (L) Knotty Spear-grass <u>Carex inversa</u> (M) Knob Sedge <u>Chrysocephalum apiculatum</u> (LH) Common Everlasting <u>Dianella longifolia</u> (M) Pale Flax-lily <u>Elymus scaber</u> (M) Common Wheat-grass <u>Eryngium ovinum</u> (LH) Blue Devil <u>Geranium solanderi</u> (MH) Austral Cranesbill <u>Glycine clandestina</u> (SC) Twining Glycine <u>Juncus remotiflorus</u> (M) Diffuse Rush <u>Juncus semisolidus</u> (L) Plains Rush <u>Leptorhynchos squamatus</u> (MH) Scaely Buttons <u>Lomandra filiformis</u> (M) Wattle Mat-rush	Groundcovers <u>Arthropodium strictum</u> (LH) Chocolate Lily <u>Austrodanthonia caespitosa</u> (M) Common Wallaby-grass <u>Austrodanthonia eriantha</u> (M) Hill Wallaby-grass <u>Austrodanthonia racemosa</u> (M) Striped Wallaby-grass <u>Austrostipa densiflora</u> (M) Dense Spear-grass <u>Chrysocephalum semipapposum</u> (LH) Clustered Everlasting <u>Dianella longifolia</u> (M) Pale Flax-lily <u>Dianella revoluta</u> (M) Black-anther Flax-lily <u>Elymus scaber</u> (M) Common Wheat-grass <u>Glycine clandestina</u> (SC) Twining Glycine <u>Hardenbergia violacea</u> (SC) Purple Coral-pea <u>Lomandra filiformis</u> (M) Wattle Mat-rush <u>Poa sieberiana</u> (M) Grey Tussock-grass <u>Senecio bathurstianus</u> (MH) Rough Fireweed <u>Themeda triandra</u> (M) Kangaroo Grass <u>Vitadina cuneata</u> (MH) Fuzzy New Holland Daisy <u>Wahlenbergia stricta</u> (LH) Tall Bluebell
(L) Large grass-like plant > 1m (M) Medium grass-like plant 10cm-1m (T) Tiny grass-like plant < 10cm (LH) Large herb->50cm (MH) Medium herb 5-20cm (SH) Small or prostrate herb < 5cm (GF) Ground Fern (SC) Scrambler/ climber	Groundcovers <u>Bulbine bulbosa</u> (MH) Bulbine Lily <u>Burchardia umbellata</u> (MH) Milkmaids <u>Carex appressa</u> (L) Tall Sedge <u>Cyperus gunnii</u> (L) Fleked Flat-sedge <u>Dianella longifolia</u> (M) Pale Flax-lily <u>Dianella revoluta</u> (M) Black-anther Flax-lily <u>Elymus scaber</u> (M) Common Wheat-grass <u>Juncus flavivulus</u> (L) Gold Rush <u>Juncus holoschoenus</u> (M) Joint-leaf Rush <u>Lomandra filiformis</u> (M) Wattle Mat-rush <u>Lomandra stipoides</u> (M) Weeping Grass <u>Phragmites australis</u> (L) Common Reed	Groundcovers <u>Arthropodium strictum</u> (LH) Chocolate Lily <u>Austrodanthonia caespitosa</u> (M) Common Wallaby-grass <u>Austrodanthonia pilosa</u> (M) Velvet Wallaby-grass <u>Austrodanthonia racemosa</u> (M) Striped Wallaby-grass <u>Austrostipa nodosa</u> (L) Knotty Spear-grass <u>Carex inversa</u> (M) Knob Sedge <u>Chrysocephalum apiculatum</u> (LH) Common Everlasting <u>Dianella longifolia</u> (M) Pale Flax-lily <u>Elymus scaber</u> (M) Common Wheat-grass <u>Eryngium ovinum</u> (LH) Blue Devil <u>Geranium solanderi</u> (MH) Austral Cranesbill <u>Glycine clandestina</u> (SC) Twining Glycine <u>Juncus remotiflorus</u> (M) Diffuse Rush <u>Juncus semisolidus</u> (L) Plains Rush <u>Leptorhynchos squamatus</u> (MH) Scaely Buttons <u>Lomandra filiformis</u> (M) Wattle Mat-rush	Groundcovers <u>Arthropodium strictum</u> (LH) Chocolate Lily <u>Austrodanthonia caespitosa</u> (M) Common Wallaby-grass <u>Austrodanthonia eriantha</u> (M) Hill Wallaby-grass <u>Austrodanthonia racemosa</u> (M) Striped Wallaby-grass <u>Austrostipa densiflora</u> (M) Dense Spear-grass <u>Chrysocephalum semipapposum</u> (LH) Clustered Everlasting <u>Dianella longifolia</u> (M) Pale Flax-lily <u>Dianella revoluta</u> (M) Black-anther Flax-lily <u>Elymus scaber</u> (M) Common Wheat-grass <u>Glycine clandestina</u> (SC) Twining Glycine <u>Hardenbergia violacea</u> (SC) Purple Coral-pea <u>Lomandra filiformis</u> (M) Wattle Mat-rush <u>Poa sieberiana</u> (M) Grey Tussock-grass <u>Senecio bathurstianus</u> (MH) Rough Fireweed <u>Themeda triandra</u> (M) Kangaroo Grass <u>Vitadina cuneata</u> (MH) Fuzzy New Holland Daisy <u>Wahlenbergia stricta</u> (LH) Tall Bluebell

¹ Northern section of this area

Warby Ranges Plains - Lower Slopes - Stoney Hills



Landform	Plain	Low Hills and Rises	Low Hills
Description	Plains: flat or gently undulating, predominantly Box eucalypts	Low Hills, lower slopes of stony sedimentary hills	Low hills on plains or adjacent to the foothills
Geology & Soils	Alluvial sediments: well drained red or brown soils, clay loam to sandy clay loam; clays with small depressions (gilgai)	Sedimentary colluvium: deeper than skeletal soils upslope	Sedimentary: skeletal sandy loam to clay loams, often gravelly
EVC	Plains Woodland/ Herb-rich Gilgai Wetland mosaic	Low Rises Grassy Woodland	Box Ironbark Forest
Location Example	Taylor's Rd, Bundalong ~0.5 km north of Chapel Rd	Angford Rd, north edge of Killawarra forest	Camp Rd north of Gepharts Tk, Killawarra forest
Legend	Trees > 5m	Trees > 5m	Trees > 5m
Underline text = likely to be available from nurseries	<u>Eucalyptus albens</u> <u>Eucalyptus camaldulensis</u> ¹ <u>Eucalyptus melliodora</u> <u>Eucalyptus microcarpa</u> <u>Myoporum montanum</u> ² (UT)	<u>Acacia implexa</u> (UT) <u>Allocasuarina luehmannii</u> <u>Eucalyptus albens</u> <u>Eucalyptus melliodora</u> <u>Eucalyptus microcarpa</u>	<u>Eucalyptus macrohyncha</u> <u>Eucalyptus microcarpa</u> <u>Eucalyptus polyanthemus</u> <u>Eucalyptus sideroxylon</u>
Bold text = more common in EVC	White Box River Red-gum ¹ Yellow Box Grey Box Waterbush ²	Lightwood Buloke White Box Yellow Box Grey Box	Red Stringybark Grey Box Red Box Mugga
Trees	Acacia acinacea (MS) Acacia montana ² (MS) Acacia paradoxa (MS) Acacia pycnantha (MS) <u>Bursaria spinosa</u> sbsp. <u>spinosa</u> Cassinia arcuata (MS) Dillwynia cinerascens (SS) Pimelea curviflora (MS)	Acacia acinacea (MS) Acacia difformis (MS) Acacia genistifolia (MS) Acacia pycnantha (MS) Bursaria spinosa sbsp. <u>spinosa</u> Cassinia arcuata (MS) Daviesia ulicifolia (MS) Dillwynia cinerascens (SS) Eutaxia microphylla (SS) Hibbertia exutiacies (SS) Pimelea humilis (SS) Pultenaea largiflorens (SS)	Acacia acinacea (MS) Acacia flexifolia (MS) Acacia genistifolia (MS) Acacia pycnantha (MS) Astroloma humifusum (PS) Brachylova daphnoides (MS) Cassinia arcuata (MS) Cheiranthera cyanea (SS) Daviesia leptophylla (MS) Dillwynia cinerascens (SS) Dillwynia juniperina (MS) Grevillea alpina (MS) Haecckeria oothamnoides (MS) Hibbertia exutiacies (SS) Leucopogon rufus (SS) Prostanthera decussata (MS) Pultenaea largiflorens (SS) Pultenaea prostrata (SS)
Woody plants (include large shrubs) > 5m (UT) Understorey Trees = trees or large shrubs > 5m that do not form part of the canopy	Gold-dust Wattle Mallee Wattle ² Hedge Wattle Golden Wattle (MS) <u>Sweet Bursaria</u> Drooping Cassinia Grey Parrot-pea Curved Rice-flower	Gold-dust Wattle Drooping Wattle Spreading Wattle Golden Wattle (MS) <u>Sweet Bursaria</u> Drooping Cassinia Gorse Bitter-pea Grey Parrot-pea Common Eutaxia Spiky Guinea-flower Common Rice-flower Twiggy Bush-pea	Gold-dust Wattle Bent-leaf Wattle Spreading Wattle Golden Wattle Cranberry Heath Daphne Heath Drooping Cassinia Blue Finger-flower Narrow-leaf Bitter-pea Grey Parrot-pea Prickly Parrot-pea Cat's Claw Grevillea Cottony Haecckeria Spiky Guinea-flower Ruddy Beard-heath Dense Mint-bush Twiggy Bush-pea Silky Bush-pea
Shrubs	Common Swamp Wallaby-grass Common Wallaby-grass (M) Brown-back Wallaby-grass ¹ Plump Spear-grass Knotty Spear-grass Windmill Grass Common Everlasting Pale Flax-lily Black-anther Flax-lily Saloop Nodding Saltbush Common Wheat-grass Spider Grass Blue Devil Plains Rush ¹ Wattle Mat-rush Many-flowered Mat-rush Grey Tussock-grass Drumsticks ¹ Fuzzy New Holland Daisy	Groundcovers Aristida behriana (M) Asperula conferta (MH) Austrodanthonia eriantha (M) Austrostipa densiflora (M) Austrostipa scabra (M) Dianella revoluta (M) Einadia hastata (MH) Elymus scaber (M) Glycine clandestina (SC) Lomandra filiformis (M) Poa sieberiana (M) Themeda triandra (M) Vittadinia cuneata (MH) Xerochrysum viscosum (LH)	Groundcovers Austrodanthonia eriantha (M) Austrostipa scabra (M) Derwentia perfoliata (LH) Dianella revoluta (M) Joycea pallida (L) Lomandra filiformis (M) Poa sieberiana (M) Xerochrysum viscosum (LH)
(MS) Medium 1-5m (SS) Small 20cm-1m (PS) Prostrate <50cm	Common Swamp Wallaby-grass Common Wallaby-grass (M) Brown-back Wallaby-grass ¹ Austrodanthonia dulitoniiana ¹ Austrostipa aristigulmis (L) Austrostipa nodosa (L) Chloris truncata (M) Chrysocephalum apiculatum (LH) Dianella longifolia (M) Dianella revoluta (M) Einadia hastata (MH) Einadia nutans (MH) Elymus scaber (M) Enteropogon acicularis (M) Eryngium ovinum (LH) Junco semisolidus ¹ (L) Lomandra filiformis (M) Lomandra multiflora (M) Poa sieberiana (M) Pycnosorus globosus ¹ (LH) Vittadinia cuneata (MH)	Groundcovers Aristida behriana (M) Asperula conferta (MH) Austrodanthonia eriantha (M) Austrostipa densiflora (M) Austrostipa scabra (M) Dianella revoluta (M) Einadia hastata (MH) Elymus scaber (M) Glycine clandestina (SC) Lomandra filiformis (M) Poa sieberiana (M) Themeda triandra (M) Vittadinia cuneata (MH) Xerochrysum viscosum (LH)	Groundcovers Austrodanthonia eriantha (M) Austrostipa scabra (M) Derwentia perfoliata (LH) Dianella revoluta (M) Joycea pallida (L) Lomandra filiformis (M) Poa sieberiana (M) Xerochrysum viscosum (LH)
(L) Large grass-like plant > 1m (M) Medium grass-like plant 10cm-1m (T) Tiny grass-like plant <10cm (LH) Large herb->50cm (MH) Medium herb 5-20cm (SH) Small or prostrate herb < 5cm (GF) Ground Fern (SC) Scrambler/climber	Common Swamp Wallaby-grass Common Wallaby-grass (M) Brown-back Wallaby-grass ¹ Plump Spear-grass Knotty Spear-grass Windmill Grass Common Everlasting Pale Flax-lily Black-anther Flax-lily Saloop Nodding Saltbush Common Wheat-grass Spider Grass Blue Devil Plains Rush ¹ Wattle Mat-rush Many-flowered Mat-rush Grey Tussock-grass Drumsticks ¹ Fuzzy New Holland Daisy	Groundcovers Aristida behriana (M) Asperula conferta (MH) Austrodanthonia eriantha (M) Austrostipa densiflora (M) Austrostipa scabra (M) Dianella revoluta (M) Einadia hastata (MH) Elymus scaber (M) Glycine clandestina (SC) Lomandra filiformis (M) Poa sieberiana (M) Themeda triandra (M) Vittadinia cuneata (MH) Xerochrysum viscosum (LH)	Groundcovers Aristida behriana (M) Asperula conferta (MH) Austrodanthonia eriantha (M) Austrostipa densiflora (M) Austrostipa scabra (M) Dianella revoluta (M) Einadia hastata (MH) Elymus scaber (M) Glycine clandestina (SC) Lomandra filiformis (M) Poa sieberiana (M) Themeda triandra (M) Vittadinia cuneata (MH) Xerochrysum viscosum (LH)

¹ Gilgai soils predominantly

² Northern section of area

Warby Ranges Slopes - Spring Soads - Granitic Hills



Landform	Low Hills	Low Hills and Lower Slopes	Low Hills and Foothills
Description	Lower slopes, outwash of granitic hills	Spring-soaks on lower slopes of granitic or metamorphic hills	Rounded hills often with surface granite boulders
Geology & Soils	Granitic colluvium: sandy loam soils	Granitic colluvium: poorly drained clays, silts; usually moist through summer	Granitic: sandy to sandy loam soils, often shallow, not on areas of surface rock
EVC	Shrubby Granitic-outwash Grassy Woodland	Spring Soak Herbland - Woodland Mosaic	Granitic Hills Woodland, Rocky Outcrop Mosaic
Location Example	Warby Range Rd reserve, Glenrowan to Taminick Gap Rd	Black Springs on Nightjar Track, Warby Range State Park	North-facing slope south of Thoonra Rd, east of Gerrett Rd
Legend	Trees > 5m	Trees > 5m	Trees > 5m
Underline text = likely to be available from nurseries	<u>Acacia implexa</u> (UT)	<u>Acacia dealbata</u> ¹ (UT)	<u>Acacia implexa</u> (UT)
Bold text = more common in EVC	Allocasuarina verticillata (UT)	Drooping Sheoak	Lightwood
Trees	<i>Brachychiton populneus</i>	<i>Kurrajong</i>	<i>Drooping Sheoak</i>
Woody plants (include large shrubs) > 5m (UT) Understorey Trees = trees or large shrubs > 5m that do not form part of the canopy	<i>Callitris glaucophylla</i>	<i>White Cypress-pine</i>	<i>White Cypress-pine</i>
	<i>Eucalyptus albens</i>	<i>White Box</i>	Blakely's Red-gum
	<i>Eucalyptus blakelyi</i>	Blakely's Red-gum	<i>Bundj / Long-leaf Box</i>
	<i>Eucalyptus melliodora</i>	<i>Yellow Box</i>	Red Stringybark
	<i>Eucalyptus polyanthemos</i>	Red Box	Red Box
	Shrubs	Shrubs	Shrubs
	<i>Acacia buxifolia</i> (MS)	<i>Box-leaf Wattle</i>	<i>Acacia aspera</i> (MS)
	<i>Acacia verniciflua</i> (MS)	<i>Varnish Wattle</i>	Box-leaf Wattle
	<i>Bursaria spinosa</i> sbsp. <i>spinosa</i>	(MS) Sweet Bursatia	<i>Acacia deanei</i> sbsp. <i>paucajuga</i> (MS)
	<i>Daviesia ulicifolia</i> (MS)	<i>Gorse Bitter-pea</i>	<i>Acacia verniciflua</i> (MS)
	<i>Dillwynia cinerascens</i> (SS)	<i>Grey Parrot-pea</i>	<i>Astroloma humifusum</i> (PS)
	<i>Grevillea alpina</i> (MS)	Cat's Claw Grevillea	Brachylooma daphnoides (MS)
	<i>Hibbertia riparia</i> (SS)	Erect Guinea-flower	Calytrix tetragona (MS)
	<i>Pultenaea foliolosa</i> (MS)	<i>Small-leaf Bush-pea</i>	<i>Correa reflexa</i> (MS)
	Groundcovers	Groundcovers	<i>Dodonaea viscosa</i> sbsp. <i>angustissima</i>
	<i>Aristida behriana</i> (M)	<i>Brush Wire-grass</i>	<i>Grevillea alpina</i> (MS)
	<i>Aristida ramosa</i> (M)	<i>Cane Wire-grass</i>	<i>Hibbertia riparia</i> (SS)
	<i>Austrodanthonia eriantha</i> (M)	<i>Hill Wallaby-grass</i>	<i>Persoonia rigida</i> (MS)
	<i>Austrostipa densiflora</i> (M)	Dense Spear-grass	Pimelea linifolia ³ (MS)
	<i>Bulbine bulbosa</i> (MH)	<i>Bulbine Lily</i>	<i>Pultenaea foliolosa</i> (MS)
	<i>Dianella revoluta</i> (M)	Black-anther Flax-lily	<i>Pultenaea platyphylla</i> (MS)
	<i>Hardenbergia violacea</i> (SC)	<i>Purple Coral-pea</i>	<i>Pultenaea procumbens</i> (SS)
	<i>Lomandra filiformis</i> (M)	<i>Wattle Mat-rush</i>	Groundcovers
	<i>Stypandra glauca</i> (LH)	<i>Nodding Blue-lily</i>	<i>Austrodanthonia eriantha</i> (M)
			<i>Austrostipa scabra</i> (M)
			<i>Dianella revoluta</i> (M)
			Isotoma axillaris ³ (MH)
			<i>Leucochrysum albicans</i> (MH)
			<i>Senecio quadridentatus</i> (LH)
			Stypandra glauca ³ (LH)
			<i>Xanthorrhoea glauca</i> sbsp. <i>angustifolia</i> (L) Grey Grass-tree
			<i>Xerochrysum viscosum</i> (LH) Shiny Everlasting
			<i>Hill Wallaby-grass</i>
			<i>Rough Spear-grass</i>
			<i>Black-anther Flax-lily</i>
			Rock Isotome ³
			<i>Hoary Sunray</i>
			<i>Cotton Fireweed</i>
			Nodding Blue-lily
			<i>(L) Grey Grass-tree</i>
			<i>Shiny Everlasting</i>

¹ Outer perimeter - on drier edge

² A 'vulnerable' species, but locally found in spring-soaks

³ Occurs around rocky areas

Warby Ranges Plains - Steep Slopes North and South - Gentle Slopes



Landform	Low Hills and Foothills	Low Hills and Foothills	Valleys in Hills
Description	Hill tops, moderate to steep dry slopes generally north to west	Moderate to steep dry slopes generally south and east facing	Broad valley bottoms, footslopes and moderate hill slopes
Geology & Soils	Sedimentary or granitic: skeletal sandy loam soil	Sedimentary or granitic: typically shallow soils	Colluvium derived from various geologies: well-drained red-brown gradational soils to loamy soils
EVC	Heathy Dry Forest	Grassy Dry Forest	Valley Grassy Forest
Location Example	South side of Thoona Rd, West of Adams Rd, Warby Range	Adams Rd, south of Tower Rd, Warby Range State Park	Gully crossed by Adams Rd, Warby Range State Park
Legend	Trees > 5m	Trees > 5m	Trees > 5m
Underline text = likely to be available from nurseries	<u><i>Eucalyptus gonicalyx</i></u> <u><i>Eucalyptus macrorhyncha</i></u> <u><i>Eucalyptus polyanthemus</i></u>	<u><i>Eucalyptus macrorhyncha</i></u> <u><i>Eucalyptus polyanthemus</i></u>	<u><i>Acacia dealbata</i></u> (UT) <u><i>Callitris glaucophylla</i></u> <u><i>Eucalyptus macrorhyncha</i></u>
Bold text = more common in EVC	Shrubs <i>Acacia gurnii</i> (SS) <i>Acacia verniciflua</i> (MS) <i>Acrotriche serrulata</i> (PS) <i>Astroloma humifusum</i> (PS) <i>Brachyloma daphnoides</i> (MS) <i>Correa reflexa</i> (MS) <i>Daviesia leptophylla</i> (MS) <i>Dillwynia phyllicoides</i> (SS) <i>Dillwynia sericea</i> (SS) <i>Gompholobium huegelii</i> (SS) <i>Grevillea alpina</i> (MS) <i>Hibbertia obtusifolia</i> (SS) <i>Leucopogon rufus</i> (SS) <i>Melicchrus urceolatus</i> (SS) <i>Persoonia rigida</i> (MS)	Red-stem Wattle Varnish Wattle Honey-pots <i>Bursaria spinosa sbsp. spinosa</i> <i>Cassinia aculeata</i> (MS) <i>Daviesia leptophylla</i> (MS) <i>Hibbertia obtusifolia</i> (SS) <i>Indigofera australis</i> (MS) <i>Platylobium formosum</i> (PS)	<i>Eucalyptus polyanthemus</i> Shrubs <i>Acrotriche serrulata</i> (PS) <i>Bursaria spinosa sbsp. spinosa</i> <i>Cassinia aculeata</i> (MS) <i>Dillwynia sericea</i> (SS) <i>Indigofera australis</i> (MS) Groundcovers <i>Acaena agnifolia</i> (MH) <i>Arthropodium strictum</i> (LH) <i>Brunonia australis</i> (MH) <i>Bulbine bulbosa</i> (MH) <i>Burchardia umbellata</i> (MH) <i>Chrysocephalum semipapposum</i> (LH) Clustered Everlasting <i>Euchiton collinus</i> (MH) <i>Geranium solanderi</i> (MH) <i>Glycine clandestina</i> (SC) <i>Lomandra filiformis</i> (M) <i>Lomandra multiflora</i> (M) <i>Microlaena stipoides</i> (M) <i>Microseris scapigera</i> - sp. 3 (LH) <i>Poa sieberiana</i> (M) <i>Senecio quadridentatus</i> (LH)
Trees	<i>Acacia gurnii</i> (SS) <i>Acacia verniciflua</i> (MS) <i>Acrotriche serrulata</i> (PS) <i>Astroloma humifusum</i> (PS) <i>Brachyloma daphnoides</i> (MS) <i>Correa reflexa</i> (MS) <i>Daviesia leptophylla</i> (MS) <i>Dillwynia phyllicoides</i> (SS) <i>Dillwynia sericea</i> (SS) <i>Gompholobium huegelii</i> (SS) <i>Grevillea alpina</i> (MS) <i>Hibbertia obtusifolia</i> (SS) <i>Leucopogon rufus</i> (SS) <i>Melicchrus urceolatus</i> (SS) <i>Persoonia rigida</i> (MS)	Red-stem Wattle Varnish Wattle Honey-pots <i>Bursaria spinosa sbsp. spinosa</i> <i>Cassinia aculeata</i> (MS) <i>Daviesia leptophylla</i> (MS) <i>Hibbertia obtusifolia</i> (SS) <i>Indigofera australis</i> (MS) <i>Platylobium formosum</i> (PS)	<i>Eucalyptus polyanthemus</i> Shrubs <i>Acrotriche serrulata</i> (PS) <i>Bursaria spinosa sbsp. spinosa</i> <i>Cassinia aculeata</i> (MS) <i>Dillwynia sericea</i> (SS) <i>Indigofera australis</i> (MS) Groundcovers <i>Acaena agnifolia</i> (MH) <i>Arthropodium strictum</i> (LH) <i>Brunonia australis</i> (MH) <i>Bulbine bulbosa</i> (MH) <i>Burchardia umbellata</i> (MH) <i>Chrysocephalum semipapposum</i> (LH) Clustered Everlasting <i>Euchiton collinus</i> (MH) <i>Geranium solanderi</i> (MH) <i>Glycine clandestina</i> (SC) <i>Lomandra filiformis</i> (M) <i>Lomandra multiflora</i> (M) <i>Microlaena stipoides</i> (M) <i>Microseris scapigera</i> - sp. 3 (LH) <i>Poa sieberiana</i> (M) <i>Senecio quadridentatus</i> (LH)
Woody plants (include large shrubs) > 5m (UT) Understorey Trees = trees or large shrubs > 5m that do not form part of the canopy	<i>Acacia gurnii</i> (SS) <i>Acacia verniciflua</i> (MS) <i>Acrotriche serrulata</i> (PS) <i>Astroloma humifusum</i> (PS) <i>Brachyloma daphnoides</i> (MS) <i>Correa reflexa</i> (MS) <i>Daviesia leptophylla</i> (MS) <i>Dillwynia phyllicoides</i> (SS) <i>Dillwynia sericea</i> (SS) <i>Gompholobium huegelii</i> (SS) <i>Grevillea alpina</i> (MS) <i>Hibbertia obtusifolia</i> (SS) <i>Leucopogon rufus</i> (SS) <i>Melicchrus urceolatus</i> (SS) <i>Persoonia rigida</i> (MS)	Red-stem Wattle Varnish Wattle Honey-pots <i>Bursaria spinosa sbsp. spinosa</i> <i>Cassinia aculeata</i> (MS) <i>Daviesia leptophylla</i> (MS) <i>Hibbertia obtusifolia</i> (SS) <i>Indigofera australis</i> (MS) <i>Platylobium formosum</i> (PS)	<i>Eucalyptus polyanthemus</i> Shrubs <i>Acrotriche serrulata</i> (PS) <i>Bursaria spinosa sbsp. spinosa</i> <i>Cassinia aculeata</i> (MS) <i>Dillwynia sericea</i> (SS) <i>Indigofera australis</i> (MS) Groundcovers <i>Acaena agnifolia</i> (MH) <i>Arthropodium strictum</i> (LH) <i>Brunonia australis</i> (MH) <i>Bulbine bulbosa</i> (MH) <i>Burchardia umbellata</i> (MH) <i>Chrysocephalum semipapposum</i> (LH) Clustered Everlasting <i>Euchiton collinus</i> (MH) <i>Geranium solanderi</i> (MH) <i>Glycine clandestina</i> (SC) <i>Lomandra filiformis</i> (M) <i>Lomandra multiflora</i> (M) <i>Microlaena stipoides</i> (M) <i>Microseris scapigera</i> - sp. 3 (LH) <i>Poa sieberiana</i> (M) <i>Senecio quadridentatus</i> (LH)
Shrubs (MS) Medium 1-5m (SS) Small 20cm-1m (PS) Prostrate <50cm	<i>Acacia gurnii</i> (SS) <i>Acacia verniciflua</i> (MS) <i>Acrotriche serrulata</i> (PS) <i>Astroloma humifusum</i> (PS) <i>Brachyloma daphnoides</i> (MS) <i>Correa reflexa</i> (MS) <i>Daviesia leptophylla</i> (MS) <i>Dillwynia phyllicoides</i> (SS) <i>Dillwynia sericea</i> (SS) <i>Gompholobium huegelii</i> (SS) <i>Grevillea alpina</i> (MS) <i>Hibbertia obtusifolia</i> (SS) <i>Leucopogon rufus</i> (SS) <i>Melicchrus urceolatus</i> (SS) <i>Persoonia rigida</i> (MS)	Red-stem Wattle Varnish Wattle Honey-pots <i>Bursaria spinosa sbsp. spinosa</i> <i>Cassinia aculeata</i> (MS) <i>Daviesia leptophylla</i> (MS) <i>Hibbertia obtusifolia</i> (SS) <i>Indigofera australis</i> (MS) <i>Platylobium formosum</i> (PS)	<i>Eucalyptus polyanthemus</i> Shrubs <i>Acrotriche serrulata</i> (PS) <i>Bursaria spinosa sbsp. spinosa</i> <i>Cassinia aculeata</i> (MS) <i>Dillwynia sericea</i> (SS) <i>Indigofera australis</i> (MS) Groundcovers <i>Acaena agnifolia</i> (MH) <i>Arthropodium strictum</i> (LH) <i>Brunonia australis</i> (MH) <i>Bulbine bulbosa</i> (MH) <i>Burchardia umbellata</i> (MH) <i>Chrysocephalum semipapposum</i> (LH) Clustered Everlasting <i>Euchiton collinus</i> (MH) <i>Geranium solanderi</i> (MH) <i>Glycine clandestina</i> (SC) <i>Lomandra filiformis</i> (M) <i>Lomandra multiflora</i> (M) <i>Microlaena stipoides</i> (M) <i>Microseris scapigera</i> - sp. 3 (LH) <i>Poa sieberiana</i> (M) <i>Senecio quadridentatus</i> (LH)
Groundcovers (L) Large grass-like plant > 1m (M) Medium grass-like plant 10cm-1m (T) Tiny grass-like plant < 10cm (LH) Large herb->50cm (MH) Medium herb 5-20cm (SH) Small or prostrate herb < 5cm (GF) Ground Fern (SC) Scrambler/climber	<i>Acacia gurnii</i> (SS) <i>Acacia verniciflua</i> (MS) <i>Acrotriche serrulata</i> (PS) <i>Astroloma humifusum</i> (PS) <i>Brachyloma daphnoides</i> (MS) <i>Correa reflexa</i> (MS) <i>Daviesia leptophylla</i> (MS) <i>Dillwynia phyllicoides</i> (SS) <i>Dillwynia sericea</i> (SS) <i>Gompholobium huegelii</i> (SS) <i>Grevillea alpina</i> (MS) <i>Hibbertia obtusifolia</i> (SS) <i>Leucopogon rufus</i> (SS) <i>Melicchrus urceolatus</i> (SS) <i>Persoonia rigida</i> (MS)	Red-stem Wattle Varnish Wattle Honey-pots <i>Bursaria spinosa sbsp. spinosa</i> <i>Cassinia aculeata</i> (MS) <i>Daviesia leptophylla</i> (MS) <i>Hibbertia obtusifolia</i> (SS) <i>Indigofera australis</i> (MS) <i>Platylobium formosum</i> (PS)	<i>Eucalyptus polyanthemus</i> Shrubs <i>Acrotriche serrulata</i> (PS) <i>Bursaria spinosa sbsp. spinosa</i> <i>Cassinia aculeata</i> (MS) <i>Dillwynia sericea</i> (SS) <i>Indigofera australis</i> (MS) Groundcovers <i>Acaena agnifolia</i> (MH) <i>Arthropodium strictum</i> (LH) <i>Brunonia australis</i> (MH) <i>Bulbine bulbosa</i> (MH) <i>Burchardia umbellata</i> (MH) <i>Chrysocephalum semipapposum</i> (LH) Clustered Everlasting <i>Euchiton collinus</i> (MH) <i>Geranium solanderi</i> (MH) <i>Glycine clandestina</i> (SC) <i>Lomandra filiformis</i> (M) <i>Lomandra multiflora</i> (M) <i>Microlaena stipoides</i> (M) <i>Microseris scapigera</i> - sp. 3 (LH) <i>Poa sieberiana</i> (M) <i>Senecio quadridentatus</i> (LH)

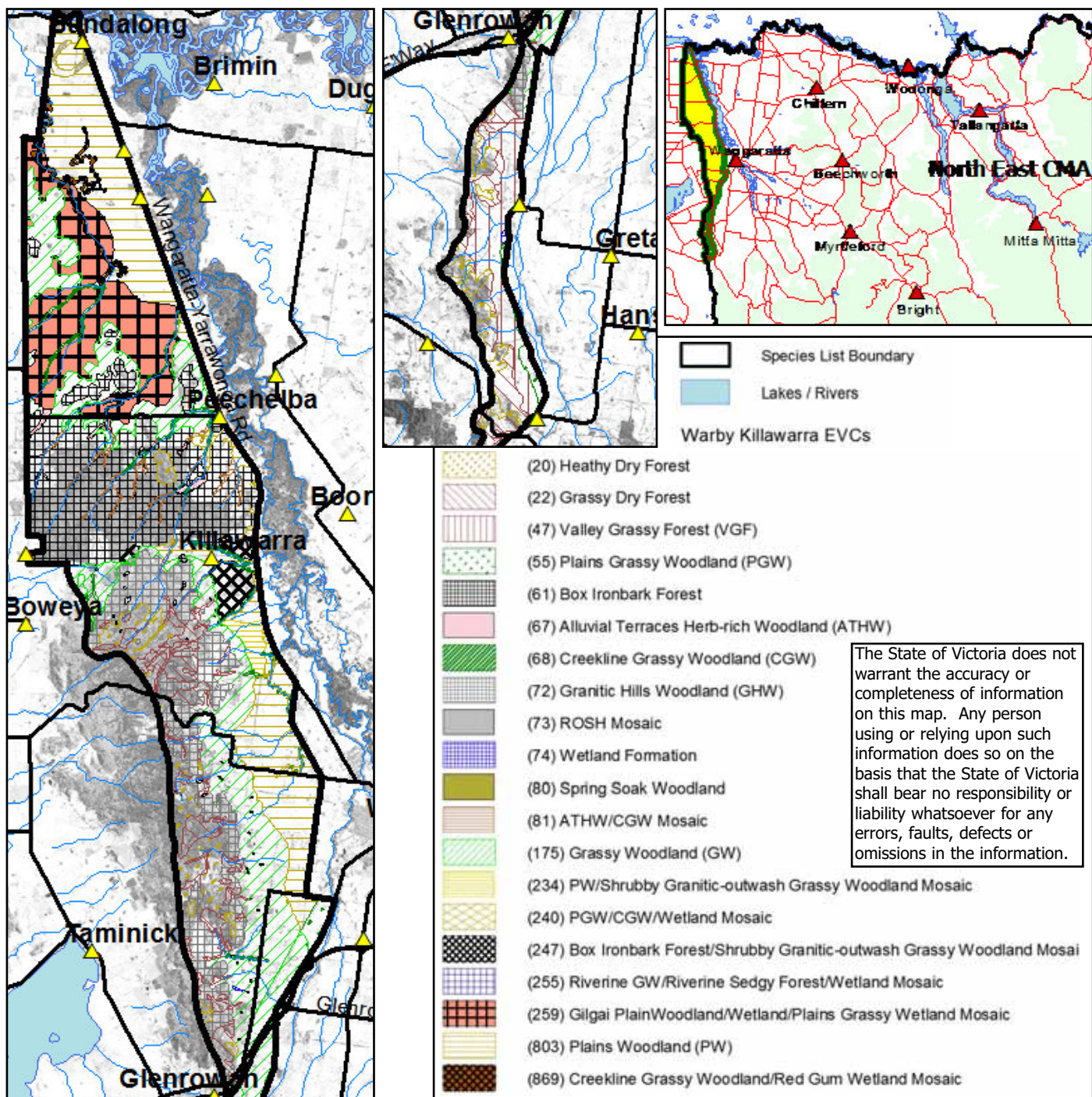


Figure 1. Map of the 'Warby Ranges' zone. This satellite image has an overlay of the mapped distribution of the Ecological Vegetation Classes for this zone. The mapping should only be used as an *indication* of which EVCs *may* occur there. To decide which EVCs relate to your property, use the Landform Descriptions and Geology & Soils information in the profiles. To view and print an EVC map for your area see the DSE website (www.dse.vic.gov.au) Select 'Interactive Maps' then 'Biodiversity Interactive Map' and choose the appropriate layers.

References:

Berwick, S. (unpublished) *Pre-1750 EVC mapping, Goulburn Broken catchment*, Department of Natural Resources and Environment, Benalla.
 Viridans Pty Ltd. (2004) *Victorian Fauna Display*, Viridans Pty Ltd., Melbourne.
 Whyte, S. (2003) *Revegetation Techniques A guide for establishing native vegetation in Victoria*, Greening Australia, Horsham.

Acknowledgments:



This project has been co-funded by DSE and Natural Heritage Trust. Our thanks to community and organisational members who have assisted with comments.
 Profile drawings created by Vincent Drane of Spring Creek Studio.

Australian Government

Edited by Sue Berwick and Mary Titcomb, Department of Sustainability and Environment
 Published by the Victorian Government Department of Sustainability and Environment Melbourne, July 2007

© The State of Victoria Department of Sustainability and Environment 2007
 This publication is copyright. No part may be reproduced by any process except in accordance with the provisions of the Copyright Act 1968.
 Authorised by the Victorian Government, Melbourne. Printed by Stream Solutions.

For further information about this publication, contact: Department of Sustainability and Environment, Wodonga (02) 6043 7900
 ISBN 978-1-74152-971-5 (print); ISBN 978-1-74152-977-7 (online); ISBN 978-1-74152-999-9 (CD-ROM)

Disclaimer

This publication may be of assistance to you but the State of Victoria and its employees do not guarantee that the publication is without flaw of any kind or is wholly appropriate for your particular purposes and therefore disclaims all liability for any error, loss or other consequence which may arise from you relying on any information in this publication.