



65 Princeton® Reverb

(This is the model name for warranty claims)

p/n 217-2000-000 (120V)

SERVICE MANUAL

Princeton®
Reverb-Amp



ATTENTION:

WARRANTY SERVICE PROCEDURES

The 65 Princeton® Reverb Amplifier is considered to be field serviceable to the component level. As such stuffed PCB Assemblies are not readily available for this unit. Any Fender Authorized Service Center in need of a warranty replacement PCB Assembly for this unit, should contact the Fender Customer Service Call Center, and ask to speak to an Electronic Technician. You will be given instructions on how to proceed with the repair at that time. You can reach the Call Center by phone at (866) 345-3642 or by email at service@fender.com.



65 Princeton® Reverb

(This is the model name for warranty claims)

July 2008

IMPORTANT NOTICE

• Copyright © 2007 FMIC. All rights reserved. All information contained herein is CONFIDENTIAL and PROPRIETARY and is the property of Fender® Musical Instruments Corporation. It is not to be sold or assigned to another party and is disclosed solely for use by Fender Authorized Service Centers for purposes of product service and maintenance. All information is not to be disclosed to others without the expressed permission of Fender® Musical Instruments Corporation. All

specifications are subject to change without notice. This information and any copies produced electronically or otherwise must be surrendered upon demand of Fender® Musical Instruments Corporation.

- Parts marked with two asterisks (**) indicate the required use of that specific part. This is necessary for RELIABILITY and SAFETY requirements. **DO NOT USE A SUBSTITUTE!**

PARTS LIST CODES

The description codes used in the itemized Parts Lists are defined below:

CAPACITOR CODES

CAP AE = Aluminum Electrolytic
CAP CA = Ceramic Axial
CAP CD = Ceramic Disk
CAP CR = Ceramic Radial
CAP MPF = Metalized Polyester Film
CAP MY = Mylar
CAP PFF = Polyester Film/Foil

RESISTOR CODES

RES CC = Carbon Comp
RES CF = Carbon Film
RES FP = Flame Proof
RES MF = Metal Film
RES MOX = Metal Oxide
RES WW = Wire Wound

HARDWARE CODES

BLX = Black Oxide
CR = Chrome Plated
HWH = Hex Washer Head
M = Machine Screw
NI = Nickel Plated
OHP = Oval Head Phillips
PB = Particle Board
PHP = Pan Head Phillips
PHPS = Pan Head Phillips Sems
SMA = Sheet Metal "A" Point
SMB = Sheet Metal "B" Point
SS = Stainless Steel
TF = Thread Forming
ZI = Zinc Plated



65 Princeton® Reverb

(This is the model name for warranty claims)

SPECIFICATIONS

Model Name:	65 Princeton Reverb	
Release Number:	PR 722	
Part Numbers	65 PRINCETON REVERB 120V	217-2000-000
	65 PRINCETON REVERB 110V TW	217-2001-900
	65 PRINCETON REVERB 240V AUS	217-2003-900
	65 PRINCETON REVERB 230V UK	217-2004-900
	65 PRINCETON REVERB 230V ARG	217-2005-900
	65 PRINCETON REVERB 230V EUR	217-2006-900
	65 PRINCETON REVERB 100V JPN	217-2007-900
	65 PRINCETON REVERB 220V ROK	217-2009-900
Power Requirement:	125 W	
Fuses:	F 2A, 250V for 100V versions F 2A, 250V for 120V versions F 1.25A, 250V for 230V versions F 1.25A, 250V for 240V versions	
Input Sensitivity:		
Input 1 High Level	10 mV – volume at maximum for 15 watts power. Tone controls centered.	
Input 2 Low Level	20 mV – volume at maximum for 15 watts power. Tone controls centered.	
Power Output:	15W RMS into 8 ohms @ < 10%THD, 1000Hz	
Input Impedances	>1M Ohms	
Speaker Complement:	10" , 8 ohm	
Dimensions	Height: 16 in	(40.6 cm)
	Width: 19 7/8 in	(50.5 cm)
	Depth: 9 1/2 in	(24.1 cm)
Weight:	28 lbs (61.6 kg)	

Product specifications are subject to change without notice



65 Princeton® Reverb

(This is the model name for warranty claims)

SERVICE NOTES

1. **CHASSIS REMOVAL** is accomplished by first removing the four (4) screws from the rear upper panel. Unplug the red and white plugs on the Reverb cable from the Reverb Input and Output respectively and also the Internal Speaker Output cable. Now remove the two

screws (4 total) screws on the left and right nickel plated chassis straps on the cabinet top. Pull the screws completely out of the cabinet. The chassis can now slide out to the rear, giving access to the electronics.



65 Princeton® Reverb

(This is the model name for warranty claims)

PCB EXCHANGE POLICY

Parts marked with a single asterisk (*) in the Part Lists are not field replaceable. If a failure due to one of these components is detected, please con-

tact the FMIC Customer Service Department to order the complete PCB Assembly.

CIRCUIT DESCRIPTION

This section provides concise information about new or unusual circuitry designs incorporated into this amplifier model. The purpose is to aid the service technician by providing insight into the design areas most likely to become obstacles in troubleshooting. Information is focused for its effective use while maintaining the security of Fender® proprietary information wherever possible.

PRE-AMPLIFIER/REVERB

The guitar signal is input to J1 for high gain and J2 for lower gain. When both inputs are used, both signals receive low gain. V1-A provides a single gain stage that drives the tone stack. The tone stack composed of R54 and R55 and associated components provide treble and bass tone control respectively. R53 provides volume control. V1-B provides gain lost in the tone stack. The output from V1-B is fed via C3, creating a high pass response to the REVERB drive amplifier V2. The REVERB pan is driven by impedance matching transformer T3. The signal is also coupled to the V3-B intermediate gain stage which acts as a mixer of the clean signal and the recovered reverb signal from the REVERB recovery amplifier V3-A.

TREMELO

V4-A is a R-C phase shift oscillator with the phase shift network provided by (R21+R11)/C6, C21/R15 and C20/R16. The oscillator rate is controlled by SPEED control R21 in the first leg of the phase shift network. The rate is approximately from 0.5 Hz to 5 Hz. The output of the oscillator is applied through the INTENSITY control R24 which inject the signal on top of the D. C. bias of the output push-pull amplifier tubes. The variation of the bias point by the

signal varies the gain of the output stage at the TREMELO rate creating an amplitude modulated vibrato effect.

POWER AMPLIFIER

Phase splitter V4-B is driven by V3-B. Output from the phase splitter drives the upper power amp tube V5 from the plate of V3-B and the lower power tube V6 from the cathode of V4-B. V5 and V6 act as a push-pull pair in a class A-B power amplifier. T1 matches the 6L6 plate impedance to the speaker load.

POWER SUPPLY

The line voltage is fed to T2's primary through the line fuse, F1, and the inrush current limiter, RT1. The input voltage is then stepped up or down as needed, rectified by dual vacuum tube diode V7 and filtered to produce the 420V, 400V, and 240V B+ voltages for the tubes... Solid state diodes D6 and D8 will allow the amp to continue to work even if a short exists across the vacuum tube diode. A 6.3VAC secondary powers the power indicator lamp and the preamp tubes heaters. The rectifier diode filament is supplied by a separate 5.4 VAC secondary winding.

Bias for the output tubes is supplied by the solid state half-wave rectifier D7 and resistive divider R28, R22 and R2 and filter capacitor C25. R22 is used to adjust the output tube stage bias voltage to set the idle current at 23 mA (23 mV across R20 or R32).



65 Princeton® Reverb

(This is the model name for warranty claims)

.PARTS LIST: PCB ASSEMBLY			
QTY.	PART #	DESCRIPTION	REFERENCE DESIGNATION
1	0027627001	RES FILM 1W 5% 10ohm LL	R60
5	0027353001	RES FILM 1W 5% 100k LL	R5 R28 R36-37 R45
1	0027347001	RES FILM 1W 5% 2.2k LL	R31
1	0037664001	**RES MOX FP 1W 5% 1k LL	R58
2	0075909000	**RES MOX FP 1W 5% 18k LL	R57 R59
2	0033095001	**RES MOX FP 1W 5% 1ohm LL	R20 R32
2	0028021001	**RES MOX 2W 5% 470ohm LL	R39-40
2	0026368001	RES CF 1/2W 5% 100ohm LL	R1 R3 R52
1	0027871001	RES CF 1/2W 5% 1k LL	R27
2	0025116001	RES CF 1/2W 5% 100k LL	R11 R46
5	0053869001	RES CF 1/2W 5% 1M LL	R6 R14-16 R25
6	0026549001	RES CF 1/2W 5% 1.5k LL	R4 R8 R23 R29 R33 R44 R62
4	0025117001	RES CF 1/2W 5% 220k LL	R12 R18-19 R38
1	0026493001	RES CF 1/2W 5% 2.7k LL	R10
1	0037665001	RES CF 1/2W 5% 27k LL	R2
1	0028861001	RES CF 1/2W 5% 3.3k LL	R9
1	0025109001	RES CF 1/2W 5% 47ohm LL	R7
1	0036957001	RES CF 1/2W 5% 470k LL	R30
2	0047434001	RES CF 1/2W 5% 56k LL	R17 R26
1	0036955001	RES CF 1/2W 5% 6.8k LL	R52
2	0024981001	RES CF 1/4W 5% 10k LL	R42 R50
1	0025069001	RES CF 1/4W 5% 1M LL	R48
1	0025077001	RES CF 1/4W 5% 3.3M LL	R13
2	0024995001	RES CF 1/4W 5% 68k LL	R47 R51
1	0028503000	**THERMISTOR 10 ohm 5A C60-11	RT1
1	0037600000	CONTROL SNAPIN 100k B TAPER	R56
1	0037596000	CONTROL SNAPIN 1M 30A TAPER	R53
1	0047540000	CONTROL SNAPIN 250k 15A TAPER	R55
2	0037597000	CONTROL SNAPIN 250k 30A TAPER	R24 R54
1	0037601000	CONTROL SNAPIN 3M 10C TAPER	R21
1	0053860000	**CAP MPF .1uF 250VAC 20%	C17
2	0051406003	CAP CD 220pF 500V 10%	C11 C15 C30-31
1	0020883000	CAP CD 10pF 1000V 10%	C5
1	0020917000	CAP CD 250pF 1000V 10%	C19
1	0020842000	CAP CD 500pF 1000V 10%	C3
1	0037040002	CAP PFF .0033uF 400V 10%	C13
6	0009512001	CAP AE AX 22uF 25V 20%	C1-2 C7-9 C18
4	0024819000	**CAP AE AX 22uF 500V +50%-10%	C26-29
1	0031040000	CAP AE RDL 100uF 100V 20%	C25
2	0024823000	CAP MPF RDL .01uF 400V 10%	C20-21
4	0024833000	CAP MPF RDL .022uF 400V 10%	C4 C6 C12 C14
1	0024845000	CAP MPF RDL .047uF 400V 10%	C23
1	0024854000	CAP MPF RDL .1uF 400V 10%	C24
3	0024855000	CAP MPF RDL .1uF 630V 10%	C10 C16 C22
2	0064089001	DIODE 1N4003	D1 D5
1	0057351001	**DIODE BYD33V	D7
2	0029690001	**DIODE HV 3kV 200mA	D2-3

* Non-serviceable part. Replace complete parent assembly. See PCB EXCHANGE POLICY section above.

shaded Unique Fender® part. Order directly from the FMIC Parts Department.

shaded + Access to this part or assembly is controlled. Please contact the FMIC Customer Service Department.

** Safety Requirement part. Replacement must match Safety Agency... -Value, if specified -Type, if specified -Approval Mark(s) if on part.

*shaded + *** Both a unique Fender® part and a Safety Requirement part as defined above.



65 Princeton® Reverb

(This is the model name for warranty claims)

QTY.	PART #	DESCRIPTION	REFERENCE DESIGNATION
1	0047206000	DIODE ZEN 1N5370B 56V 5W 5%	D4
7	0026000001	FSTN TAB MALE .187x.032 PCB MT	P1-6 P9-14
8	0025802000	FSTN TAB MALE .250x.032 PCB MT	P7-8 P17
2	0027408000	HDR .1 CTR 2 CKT SQ PIN	P19A/B
6	0027413000	HDR .1 CTR 6 CKT SQ PIN	P15A/B, P16A/B, P17A/B
2	0059889000	JACK STEREO R/A w/METAL BUSH	J1-2
2	0070334001	**FUSE PICO 7 AMP 125V	F2,F3

PARTS LIST:		CHASSIS ASSEMBLY	
QTY.	PART #	DESCRIPTION	REFERENCE DESIGNATION
1	0075159000	*PANEL FRONT 65 PRINCETON REVERB	
1	0075165000	**XFMR 65 PRINCETON REVERB 120V	T2
REF	0075166000	**XFMR 65 PRINCETON REVERB 100V	T2
REF	0075167000	**XFMR 65 PRINCETON REVERB 220/240V	T2
1	0036702000	**FUSE HOLDER 3AG FINGER GRIP	@100/120 VAC VERSIONS
1	0048827000	**FUSE QA 1-1/4x1/4 250v 2A	F1, 100/120 VAC VERSIONS
REF	0036703000	**FUSE HOLDER 5MM FINGER GRIP	@230/240 VAC VERSIONS
REF	0048382000	**FUSE QA 20mm X 5mm 250V 1.25A	F1, 230/240 VAC VERSIONS
6	0022004000	NUT KEPS 8-32 ZINC	
1	0037099000	**XFMR REVERB VIBROVERB/65 DLX	T3
1	0069362000	**XFMR OUTPUT PRA	T1
3	0990724000	TUBE SCKT 8 PIN	@V5,V6,V7
18	0038900000	SCRW TF 6-32X1/4 PHP ZI	
4	0023606000	TUBE SOCKET 9 PIN	@V1-V4
3	0020424000	TUBE RING UNIVERSAL (277H-2)	@V5,V6,V7
2	0037239000	SCRW TF 8-32x3/8 PHP BLX	
3	0018022000	BUSHING SNAP 5/16x17/32 BLK	
3	0994005000	GT 7025/12AX7WC HIGH MU TUBE	V1, V3, V4
1	0994006000	GT 12AT7 HIGH MU TWIN TRIODE TUBE	V2
1	0994030000	TUBE 5AR4 FULLWAVE RECTIFIER	V7
1	0994004X02	GT 6V6 Duet (Matched)	V5, V6 (X= 1-Red, 2-White, 3-Blue)
4	0990723000	TUBE SHIELD	@V1-V4
6	0016352049	NUT HEX 3/8-32x3/32 TK NI	Sold in 12 pack
REF	0031153049	WSHR FLAT 3/8x.614 NI	Sold in 12 pack
1	0054642000	**CONNECTOR IEC SNAP IN	
1	0036570000	**SWITCH TOGGLE DPST W/NUTS	S1, MAIN POWER SWITCH
1	0021956000	JACK PHONE OPEN CIRCUIT 11	J9, EXTERNAL SPEAKER
2	0056930000	JACK PHONO 2 CND PNL MT #3501FP	J3, J4 REVERB IN/OUT
1	0013043000	JACK PHONE STEREO 12B	J5, FOOTSWITCH
1	0021550000	JACK PHONE TIP SHUNT 12A	J8, SPEAKER
6	0990930000	KNOB BLK W/WHT STAMP 1-10	
1	0054798000	JEWEL ASSY LED	
1	0031625000	NUT HOLDER PILOT LIGHT 11/16-27	
6	0028937000	SCRW TF 6-32x5/8 PHP ZI	
REF	9904300920	WASHER FLAT .482X.709 NI	

* Non-serviceable part. Replace complete parent assembly. See PCB EXCHANGE POLICY section above.

shaded Unique Fender® part. Order directly from the FMIC Parts Department.

shaded + Access to this part or assembly is controlled. Please contact the FMIC Customer Service Department.

** Safety Requirement part. Replacement must match Safety Agency... -Value, if specified -Type, if specified -Approval Mark(s) if on part.

*shaded + *** Both a unique Fender® part and a Safety Requirement part as defined above.



65 Princeton® Reverb

(This is the model name for warranty claims)

PARTS LIST: CHASSIS ASSEMBLY			
QTY.	PART #	DESCRIPTION	REFERENCE DESIGNATION
1	0022012049	NUT HEX 3/8-32x3/32 TK NI	Sold in 12 Pack
2	0057351001	**DIODE 1400V 1.3A #BYD33V/EBT/R	
1	0017502000	CONTROL T-POT 10k 20% CHASSISMTG	R22, BIAS ADJUST
10	0025936000	STANDOFF NYL PCB SNAP 3/8	@PCB MOUNTING HOLES
4	0051406003	CAP CD 220pF 500V 10%	C11,C12,C30,C31 @ J3, J4, J5
3	0070998000	CABLE ASSY RIBBON 6CKT 2-1/2"	
1	0076040000	CABLE ASSY RIBBON 2CKT 2-1/2"	

PARTS LIST: CABINET ASSEMBLY			
QTY.	PART #	DESCRIPTION	REFERENCE DESIGNATION
1	0075161000	*CABINET ASSY 65 PRINCETON REVERB	
1	0075161008	*65 PRINCETON REV CABINET BAFFLE ASSY	
1	0075161013	*65 PRINCETON REV CABINET UPPER BACK ASSY	
1	0075161012	*65 PRINCETON REV CABINET LOWER BACK ASSY	
1	0075161007	*65 PRINCETON REV SPKR GRILLE FRAME ASSY	
1.3 yd	0026570000	TOLEX "BRAVURA BLACK" BRONCO	
8	0029527049	WSHR FNSH 8-5/8 FLNGD BLX WX	Sold in 12 pack
8	0011678000	SCRW SMA 8x1-1/2 OHP BLX	
6	0021972049	NUT T 10-32x3/4 STR 3 PRNG BLX	Sold in 12 pack
2	0022244000	SCRW M 10-32x1-1/8 OHP NI	
2	0025395000	HANDLE CAP 1 HOLE NI(DWG17420)	
1	0037790000	HANDLE VINYL BLACK MATTE 9.25" RIBBED	
1	0032524000	HANDLE REINFORCEMENT STEEL	
4	0041549000	GLIDE CUP PRESS-IN NI PLATED (0.75 DIA)	
.275	0037788000	CLOTH GRILLE BLACK/SILVER	

PARTS LIST: END ITEM ASSEMBLY			
QTY.	PART #	DESCRIPTION	REFERENCE DESIGNATION
1	0075161000	*CABINET ASSY 65 PRINCETON REVERB	
REF	0053997000	**CORD PWR W/IEC CONN 100V JPN	
REF	0047251000	**CORD PWR W/IEC CONN 230V	
REF	0057674000	**CORD PWR W/IEC CONN 230V ARG	
REF	0047249000	**CORD PWR W/IEC CONN 230V UK	
REF	0047250000	**CORD PWR W/IEC CONN 250V	
1	0047248000	**CORD PWR W/IEC CONN DOM	
1	0994058000	FOOTSWITCH ASSY VIB/REV	
1	0029881000	COVER,DLX 112+/ROC PRO 700	
2	0990910000	STRAP CHASSIS 4-1/2" NICKEL	

* Non-serviceable part. Replace complete parent assembly. See PCB EXCHANGE POLICY section above.

shaded Unique Fender® part. Order directly from the FMIC Parts Department.

shaded + Access to this part or assembly is controlled. Please contact the FMIC Customer Service Department.

** Safety Requirement part. Replacement must match Safety Agency... -Value, if specified -Type, if specified -Approval Mark(s) if on part.

shaded + ** Both a unique Fender® part and a Safety Requirement part as defined above.



65 Princeton® Reverb

(This is the model name for warranty claims)

PARTS LIST:		END ITEM ASSEMBLY	
QTY.	PART #	DESCRIPTION	REFERENCE DESIGNATION
4	0022236049	SCRW M 8-32x3-1/4 OHP NI CP	@CHASSIS MTG Sold in 12 pack
1	0012582000	CLAMP CABLE NYL SCRW MNT 1/4	@REVERB CABLE
2	0030866000	SCRW SMA 8x1/2 PHP NI	
1	0056931000	CABLE REVERB 48" RIGHT ANGLE	
1	0064063000	REVERB UNIT 4 SPRING 4AB3C1B	
1	0031849000	REVERB BAG	
1	0028453000	PAD CARDBOARD REVERB #12FN86	
1	0023192000	*NAMEPLATE FNDR 65 TWIN	
3	0037985049	SCRW SMA 2x3/8 PHP BLX	@ FENDER NAMEPLATE Sold in 12 pack
8	0037215049	WSHR C/SUNK NICKEL #6	@REAR PANELS Sold in 12 pack
8	0037952049	SCRW SMA #6x1 OHP Ni	@REAR PANELS Sold in 12 pack
1	0038566000	CABLE ASSY SPKR RT ANG 13-1/2"	
4	0047821000	SCRW M 10-32 3/4 THP STL BLX	
1	0069347000	SPEAKER 8" 8 OHM JENSEN C10R	
REF	0075329000	TUBE CAGE 65 PRINCETON REVERB	EXPORT ONLY
REF	0016006000	SCRW M 10-32x1/2 THP NI	EXPORT ONLY (TUBE CAGE MOUNTING)
1	9906900590	CLAMP CABLE NYL ADHESIVE	@REVERB (INSIDE BAG)

PARTS LIST:		FOOTSWITCH ASSY	
QTY.	PART #	DESCRIPTION	REFERENCE DESIGNATION
1	0994058000	FOOTSWITCH ASSEMBLY VIB/REV	
1	0013172000	PLUG PHONE 3 CONDUCTOR 238 RA	
2	0024042000	SWITCH SPST PUSH BUTTON	

* Non-serviceable part. Replace complete parent assembly. See PCB EXCHANGE POLICY section above.

shaded Unique Fender® part. Order directly from the FMIC Parts Department.

shaded + Access to this part or assembly is controlled. Please contact the FMIC Customer Service Department.

** Safety Requirement part. Replacement must match Safety Agency... -Value, if specified -Type, if specified -Approval Mark(s) if on part.

*shaded + *** Both a unique Fender® part and a Safety Requirement part as defined above.



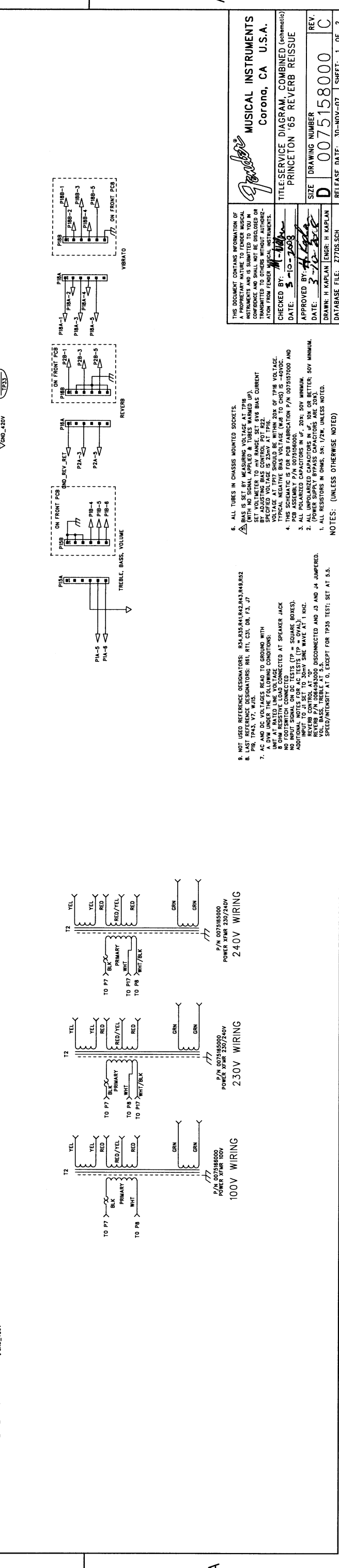
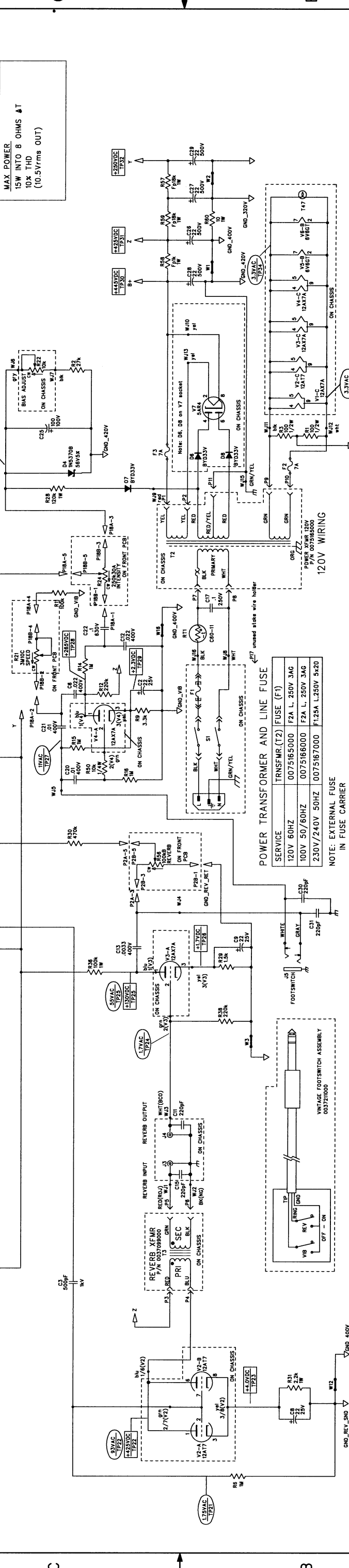
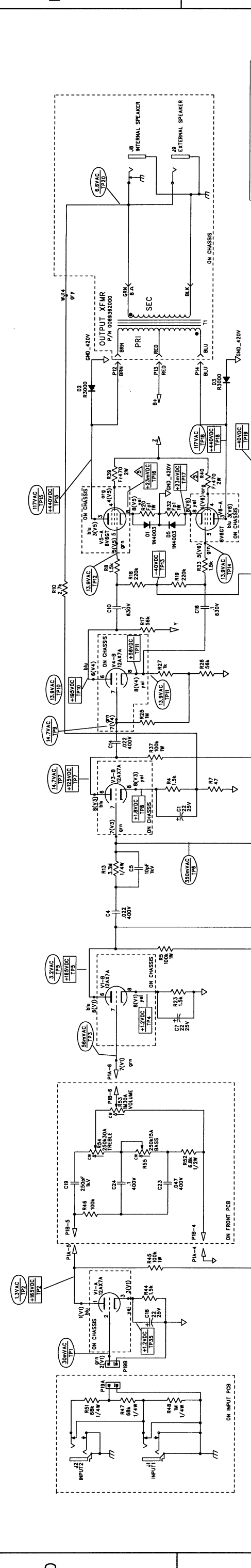
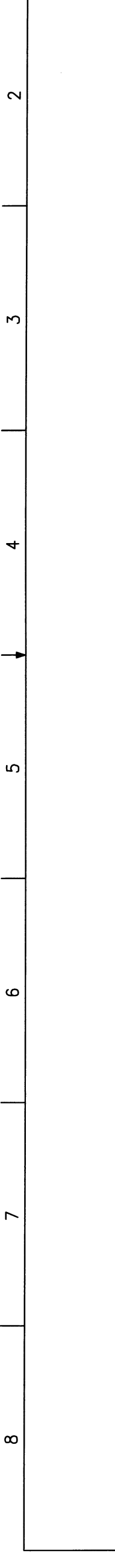
65 Princeton® Reverb

(This is the model name for warranty claims)

Service Diagram List

Service Diagram (Schematic)	65 PRINCETON REVERB PCB
Service Diagram (PCB Assembly)	65 PRINCETON REVERB PCB
Chassis Assembly	65 PRINCETON REVERB AMP
End Item Assembly	65 PRINCETON REVERB AMP
Footswitch Assembly	2-BUTTON VINTAGE FOOTSWITCH
Service Diagram (PCB Assembly)	2-BUTTON VINTAGE FOOTSWITCH
Wire Set (PCB Assembly)	65 PRINCETON REVERB PCB
Wire Set (Chassis Assembly)	65 PRINCETON REVERB AMP

REVISIONS			
REV.	DESCRIPTION	DATE	APPROVED
A	PR770	10-OCT-07	H B K
B	EC3980	15-JAN-08	H B K
C	EC4002	10-MAR-08	H B K



1

2

3

4

5

6

7

8

1

2

3

4

5

6

7

8

1

2

3

4

5

6

7

8

1

2

3

4

5

6

7

8

1

2

3

4

5

6

7

8

1

2

3

4

5

6

7

8

1

2

3

4

5

6

7

8

1

2

3

4

5

6

7

8

1

2

3

4

5

6

7

8

1

2

3

4

5

6

7

8

1

2

3

4

Fender
MUSICAL INSTRUMENTS
Corona, CA U.S.A.

TITLE: SERVICE DIAGRAM COMBINED (schematic)
PRINCETON '65 REVERB REISSUE

CHECKED BY: *M. [Signature]*
APPROVED BY: *H. [Signature]*
DATE: 3-10-2008

SIZE: D
DRAWING NUMBER: 0075158000
REV. C

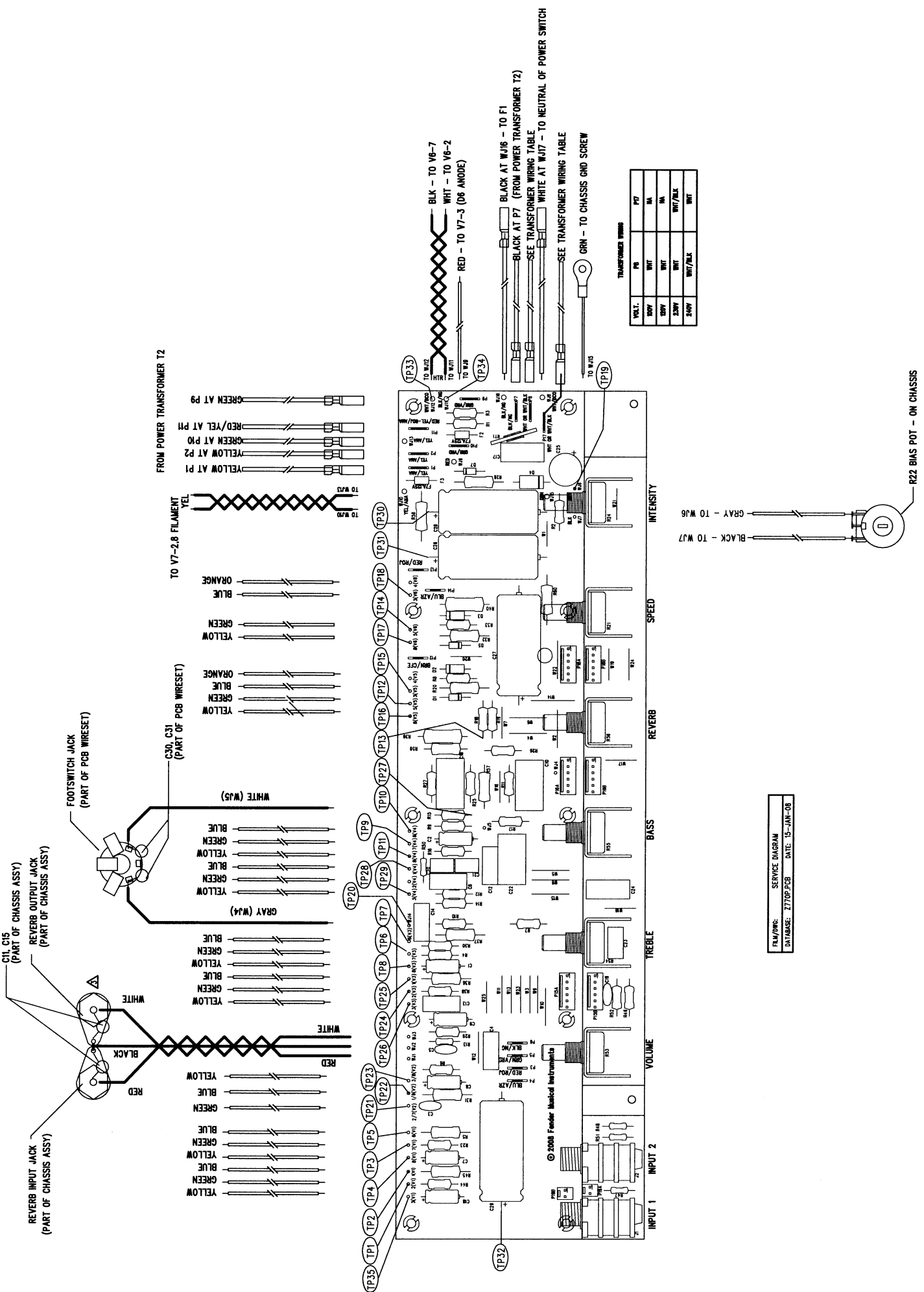
RELEASE DATE: 30-NOV-07 SHEET: 1 OF 2
DATABASE FILE: 27705.SCH

6. ALL TUBES IN CHASSIS MOUNTED SOCKETS.
BIAS IS SET BY MEASURING VOLTAGE AT TP8 (WITH NO SIGNAL APPLIED & TUBES WARMED UP). BY ADJUSTING BIAS CONTROL POT R22 TO SPECIFIED VOLTAGE IS 230V AT TP8. TYPICAL NEGATIVE BIAS VOLTAGE (W/NO SIGNAL) IS -40VDC. THIS SCHEMATIC IS FOR PCB FABRICATION P/N 0075157000 AND P/N 0075158000.
3. ALL POLARIZED CAPACITORS IN "F", "D", "Z", "S", "V", "M", "MINIMUM. REVERB ON/OFF SWITCH DISCONNECTED AND J3 AND J4 JUMPED. VOL. BASS, TREBLE AT 0.5. EXCEPT FOR TP35 TEST; SET AT 0.5. SPEED/INTENSITY AT 0.

9. NOT USED REFERENCE DESIGNATORS: R34, R35, R41, R42, R43, R44, R45, R46, R47, R48, R49, R50, R51, R52, R53, R54, R55, R56, R57, R58, R59, R60, R61, R62, R63, R64, R65, R66, R67, R68, R69, R70, R71, R72, R73, R74, R75, R76, R77, R78, R79, R80, R81, R82, R83, R84, R85, R86, R87, R88, R89, R90, R91, R92, R93, R94, R95, R96, R97, R98, R99, R100, R101, R102, R103, R104, R105, R106, R107, R108, R109, R110, R111, R112, R113, R114, R115, R116, R117, R118, R119, R120, R121, R122, R123, R124, R125, R126, R127, R128, R129, R130, R131, R132, R133, R134, R135, R136, R137, R138, R139, R140, R141, R142, R143, R144, R145, R146, R147, R148, R149, R150, R151, R152, R153, R154, R155, R156, R157, R158, R159, R160, R161, R162, R163, R164, R165, R166, R167, R168, R169, R170, R171, R172, R173, R174, R175, R176, R177, R178, R179, R180, R181, R182, R183, R184, R185, R186, R187, R188, R189, R190, R191, R192, R193, R194, R195, R196, R197, R198, R199, R200, R201, R202, R203, R204, R205, R206, R207, R208, R209, R210, R211, R212, R213, R214, R215, R216, R217, R218, R219, R220, R221, R222, R223, R224, R225, R226, R227, R228, R229, R230, R231, R232, R233, R234, R235, R236, R237, R238, R239, R240, R241, R242, R243, R244, R245, R246, R247, R248, R249, R250, R251, R252, R253, R254, R255, R256, R257, R258, R259, R260, R261, R262, R263, R264, R265, R266, R267, R268, R269, R270, R271, R272, R273, R274, R275, R276, R277, R278, R279, R280, R281, R282, R283, R284, R285, R286, R287, R288, R289, R290, R291, R292, R293, R294, R295, R296, R297, R298, R299, R300, R301, R302, R303, R304, R305, R306, R307, R308, R309, R310, R311, R312, R313, R314, R315, R316, R317, R318, R319, R320, R321, R322, R323, R324, R325, R326, R327, R328, R329, R330, R331, R332, R333, R334, R335, R336, R337, R338, R339, R340, R341, R342, R343, R344, R345, R346, R347, R348, R349, R350, R351, R352, R353, R354, R355, R356, R357, R358, R359, R360, R361, R362, R363, R364, R365, R366, R367, R368, R369, R370, R371, R372, R373, R374, R375, R376, R377, R378, R379, R380, R381, R382, R383, R384, R385, R386, R387, R388, R389, R390, R391, R392, R393, R394, R395, R396, R397, R398, R399, R400, R401, R402, R403, R404, R405, R406, R407, R408, R409, R410, R411, R412, R413, R414, R415, R416, R417, R418, R419, R420, R421, R422, R423, R424, R425, R426, R427, R428, R429, R430, R431, R432, R433, R434, R435, R436, R437, R438, R439, R440, R441, R442, R443, R444, R445, R446, R447, R448, R449, R450, R451, R452, R453, R454, R455, R456, R457, R458, R459, R460, R461, R462, R463, R464, R465, R466, R467, R468, R469, R470, R471, R472, R473, R474, R475, R476, R477, R478, R479, R480, R481, R482, R483, R484, R485, R486, R487, R488, R489, R490, R491, R492, R493, R494, R495, R496, R497, R498, R499, R500, R501, R502, R503, R504, R505, R506, R507, R508, R509, R510, R511, R512, R513, R514, R515, R516, R517, R518, R519, R520, R521, R522, R523, R524, R525, R526, R527, R528, R529, R530, R531, R532, R533, R534, R535, R536, R537, R538, R539, R540, R541, R542, R543, R544, R545, R546, R547, R548, R549, R550, R551, R552, R553, R554, R555, R556, R557, R558, R559, R560, R561, R562, R563, R564, R565, R566, R567, R568, R569, R570, R571, R572, R573, R574, R575, R576, R577, R578, R579, R580, R581, R582, R583, R584, R585, R586, R587, R588, R589, R590, R591, R592, R593, R594, R595, R596, R597, R598, R599, R600, R601, R602, R603, R604, R605, R606, R607, R608, R609, R610, R611, R612, R613, R614, R615, R616, R617, R618, R619, R620, R621, R622, R623, R624, R625, R626, R627, R628, R629, R630, R631, R632, R633, R634, R635, R636, R637, R638, R639, R640, R641, R642, R643, R644, R645, R646, R647, R648, R649, R650, R651, R652, R653, R654, R655, R656, R657, R658, R659, R660, R661, R662, R663, R664, R665, R666, R667, R668, R669, R670, R671, R672, R673, R674, R675, R676, R677, R678, R679, R680, R681, R682, R683, R684, R685, R686, R687, R688, R689, R690, R691, R692, R693, R694, R695, R696, R697, R698, R699, R700, R701, R702, R703, R704, R705, R706, R707, R708, R709, R710, R711, R712, R713, R714, R715, R716, R717, R718, R719, R720, R721, R722, R723, R724, R725, R726, R727, R728, R729, R730, R731, R732, R733, R734, R735, R736, R737, R738, R739, R740, R741, R742, R743, R744, R745, R746, R747, R748, R749, R750, R751, R752, R753, R754, R755, R756, R757, R758, R759, R760, R761, R762, R763, R764, R765, R766, R767, R768, R769, R770, R771, R772, R773, R774, R775, R776, R777, R778, R779, R780, R781, R782, R783, R784, R785, R786, R787, R788, R789, R790, R791, R792, R793, R794, R795, R796, R797, R798, R799, R800, R801, R802, R803, R804, R805, R806, R807, R808, R809, R810, R811, R812, R813, R814, R815, R816, R817, R818, R819, R820, R821, R822, R823, R824, R825, R826, R827, R828, R829, R830, R831, R832, R833, R834, R835, R836, R837, R838, R839, R840, R841, R842, R843, R844, R845, R846, R847, R848, R849, R850, R851, R852, R853, R854, R855, R856, R857, R858, R859, R860, R861, R862, R863, R864, R865, R866, R867, R868, R869, R870, R871, R872, R873, R874, R875, R876, R877, R878, R879, R880, R881, R882, R883, R884, R885, R886, R887, R888, R889, R890, R891, R892, R893, R894, R895, R896, R897, R898, R899, R900, R901, R902, R903, R904, R905, R906, R907, R908, R909, R910, R911, R912, R913, R914, R915, R916, R917, R918, R919, R920, R921, R922, R923, R924, R925, R926, R927, R928, R929, R930, R931, R932, R933, R934, R935, R936, R937, R938, R939, R940, R941, R942, R943, R944, R945, R946, R947, R948, R949, R950, R951, R952, R953, R954, R955, R956, R957, R958, R959, R960, R961, R962, R963, R964, R965, R966, R967, R968, R969, R970, R971, R972, R973, R974, R975, R976, R977, R978, R979, R980, R981, R982, R983, R984, R985, R986, R987, R988, R989, R990, R991, R992, R993, R994, R995, R996, R997, R998, R999, R1000.

1 2 3 4 5 6 7 8

REVISIONS			
REV.	DESCRIPTION	DATE	APPROVED
A	PR770	10-OCT-07	H B K
B	EC3980	15-JAN-08	H B K
C	EC4002	10-MAR-08	H B K



TRANSFORMER WIRING	
VOLT.	WIRING
250V	WHT
250V	WHT
250V	WHT
250V	WHT/BLK
250V	WHT

FILENAME: SERVICE DIAGRAM
 DATABASE: 2770P.PCB DATE: 15-JAN-08

THIS DOCUMENT CONTAINS INFORMATION OF A PROPRIETARY NATURE TO FENDER MUSICAL INSTRUMENTS AND IS LOANED TO YOU IN CONFIDENCE AND SHALL NOT BE REPRODUCED OR TRANSMITTED IN ANY FORM OR BY ANY MEANS, EITHER ELECTRONIC OR MECHANICAL, WITHOUT THE WRITTEN PERMISSION OF FENDER MUSICAL INSTRUMENTS.

CHECKED BY: *M. M. M.*
 DATE: *8-9-2008*

APPROVED BY: *H. B. K.*
 DATE: *3-12-2008*

DRAWN: PK COBBIN EMBR: R. KOPLAN
 DATABASE FILE: 2770P.PCB

MUSICAL INSTRUMENTS
 Corning, CA U.S.A.

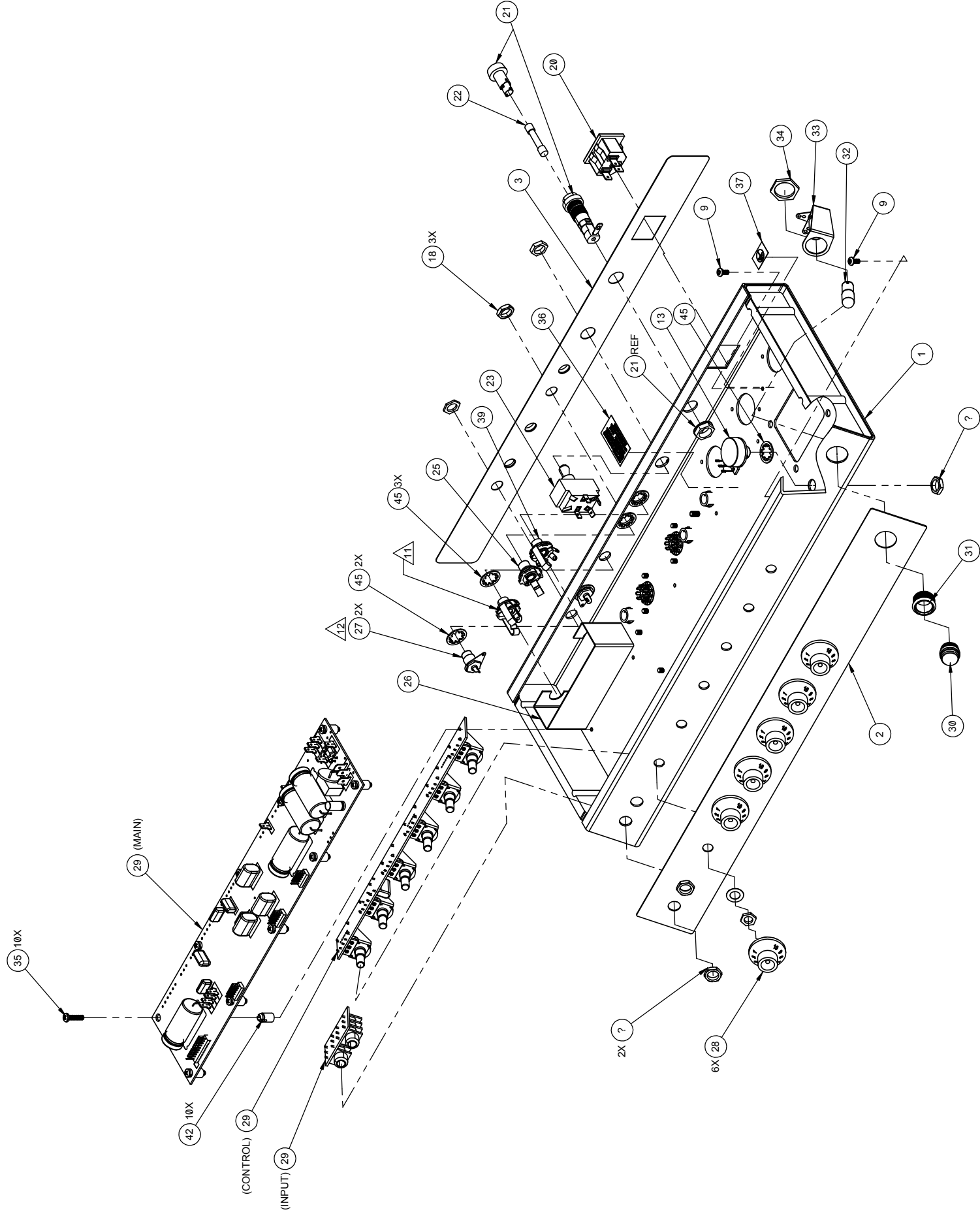
TITLE: SERVICE DIAGRAM, COMBINED (PCB assy)
 PRINCETON '65 REVERB AMPLIFIER

SIZE: **D** DRAWING NUMBER: **0075158000** REV. **C**

RELEASE DATE: 10-OCT-07 SHEET 2 OF 2

1. SEE SHEET 1 FOR PRIMARY WIRING, TEST CONDITIONS AND TEST POINT VALUES.
 NOTES: (UNLESS OTHERWISE NOTED)

1 2 3 4 5 6 7 8



SERVICE MANUAL DOCUMENT

06/03/2008

(N.S.) = NOT SHOWN

47	1	CABLE ASSY RIBBON 2CKT 2-1/2" (N.S.)
46	3	CABLE ASSY RIBBON 6CKT 2-1/2" (N.S.)
45	6	WSHR LCK INTL 3/8x.687x.065 NI
44	1	TUBE 2025/12AX7A RUSN
43	2	CAP CD 220PF 500V 10%
42	10	STANDOFF NYL PCB SNAP 3/8
41	1	TUBE 5AR4 FULLWAVE RECTIFIER
40	2	DIODE 1400V
39	1	JACK PHONE TIP SHUNT 12A
38	1	WIRE SET 65 PRINCETON REVERB (N.S.)
37	1	LABEL GROUNDING SEMKO
36	1	LABEL FUSE
35	10	SCRW TF 6-32x5/8 PHP ZI
34	1	NUT HOLDER PILOT LIGHT 11/16-27
33	1	HOLDER IDAL LITE ASSY PILOT
32	1	PILOT LIGHT #147
31	1	COLLAR-PILOT LIGHT
30	1	JEWEL PILOT LITE RED #20
29	1	PCB ASSEMBLY 65 PRINCETON REVERB
28	6	NOB BLK W/WHIT STAMP 1-10 USE 0950930000
27	2	JACK PHONO 2 CND PNL MT #350TFP
26	1	JACK PHONE OPEN CIRCUIT 11 (VEND 2J1948)
25	1	BARRIER, FISH PAPER, 65 PRINCETON REVERB
24	1	BOOT TOGGLE SWITCH BLACK (N.S.)
23	1	SWITCH TOGGLE DPST W/NUTS
22	1	FUSE
21	1	FUSE HOLDER
20	1	CONNECTOR IEC SNAP IN
19	2	TUBE 6V6GTA STR391A
18	6	NUT HEX 3/8-32x3/32 TK NI
17	4	TUBE SHIELD (099-0723-000)
16	1	TUBE 12AT7 HIGH MUJ TWIN TRIODE
15	2	TUBE 7025/12AX7MC HIGH MUJ TWIN TRIODE
14	3	BUSHING SNAP 5/16x17/32 BLK
13	1	CONTROL 10K LINEAR
12	2	SCRW TF 8-32x3/8 PHP BLX
11	3	TUBE RING UNIVERSAL (277H-2)
10	4	TUBE SOCKET 9 PIN
9	18	SCRW TF 6-32x1/4 PHP ZI
8	3	TUBE SOCKET 8 PN (095-0724-000)
7	1	XFMR OUTPUT PRA
6	1	XFMR REVERB VIBROVERB65 DLX
5	4	NUT KEPS 8-32 ZINC
4	1	XFMR POWER 65 PRINCETON REVERB
3	1	PANEL REAR 65 PRINCETON REVERB
2	1	PANEL FRONT 65 PRINCETON REVERB
1	1	CHASSIS 65 PRINCETON REVERB

ENGINEER _____
 DRAWN _____
 DATE 05/07/2007
 DFT. ENG. DATE DATE
 DATE DATE DATE
 APPROVED _____

Fender
 FENDER MUSICAL INSTRUMENTS CORP.
 CORONA, CALIFORNIA U.S.A.

CHASSIS ASSEMBLY 65 PRINCETON REVERB

SHEET 10/2
 SCALE NONE
 APPROVED DATE

SIZE D
 PART NUMBER 0075152000
 REV B
 ASSEMBLY

THIS DOCUMENT CONTAINS INFORMATION OF A PROPRIETARY NATURE TO FENDER MUSICAL INSTRUMENTS AND IS SUBMITTED TO YOU IN CONFIDENCE AND SHALL REMAIN THE PROPERTY OF FENDER MUSICAL INSTRUMENTS CORP. ANY REPRODUCTION OR OTHER USE WITHOUT AUTHORIZATION FROM FENDER MUSICAL INSTRUMENTS CORP.

SERVICE MANUAL DOCUMENT

06/03/2008

REV/EC NUMBER BY DATE/ARCHIVE

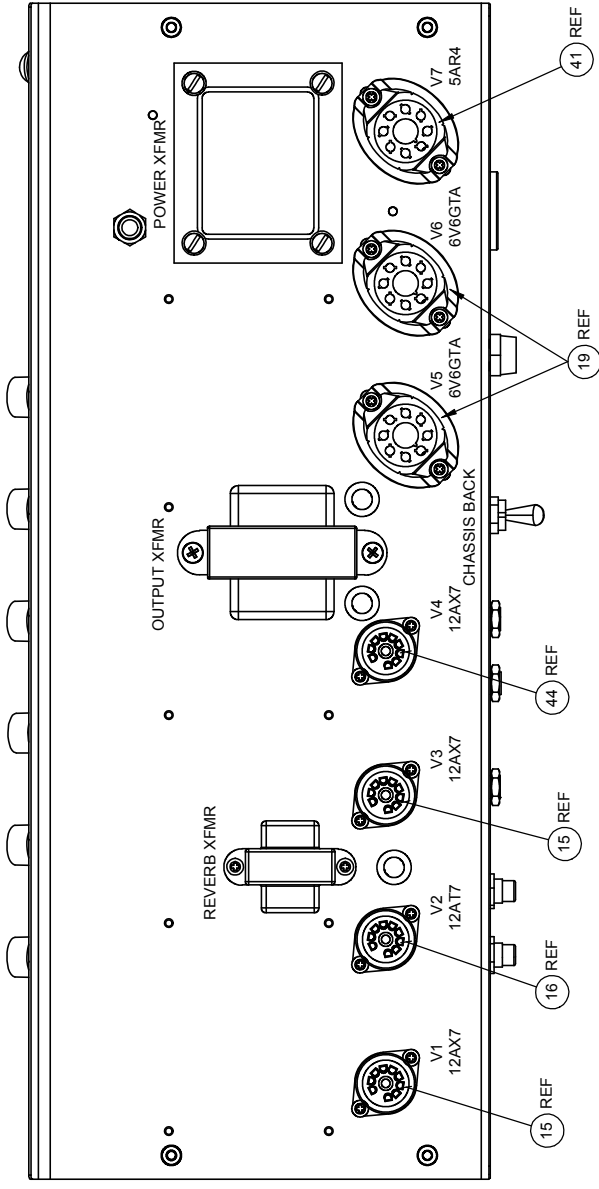
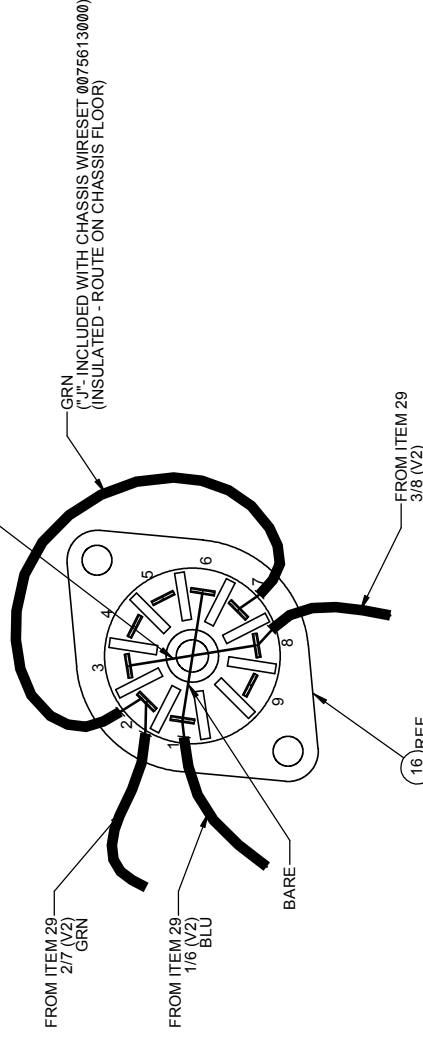
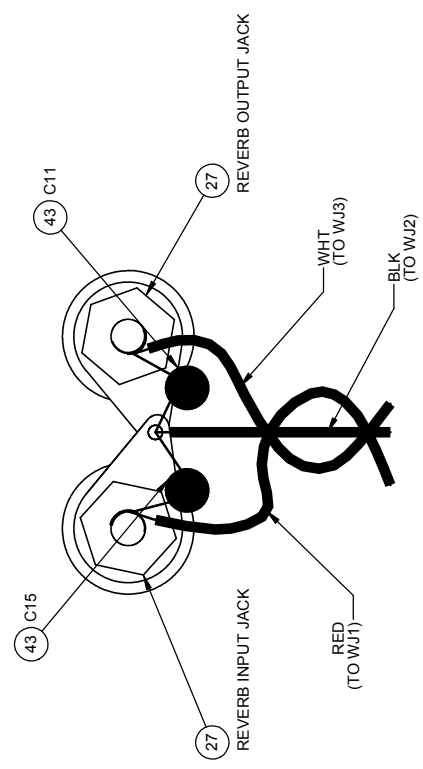


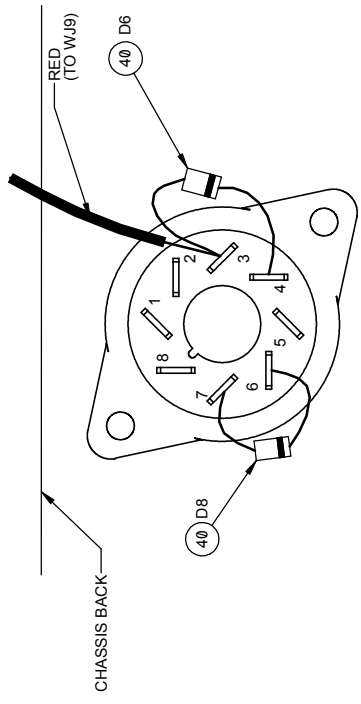
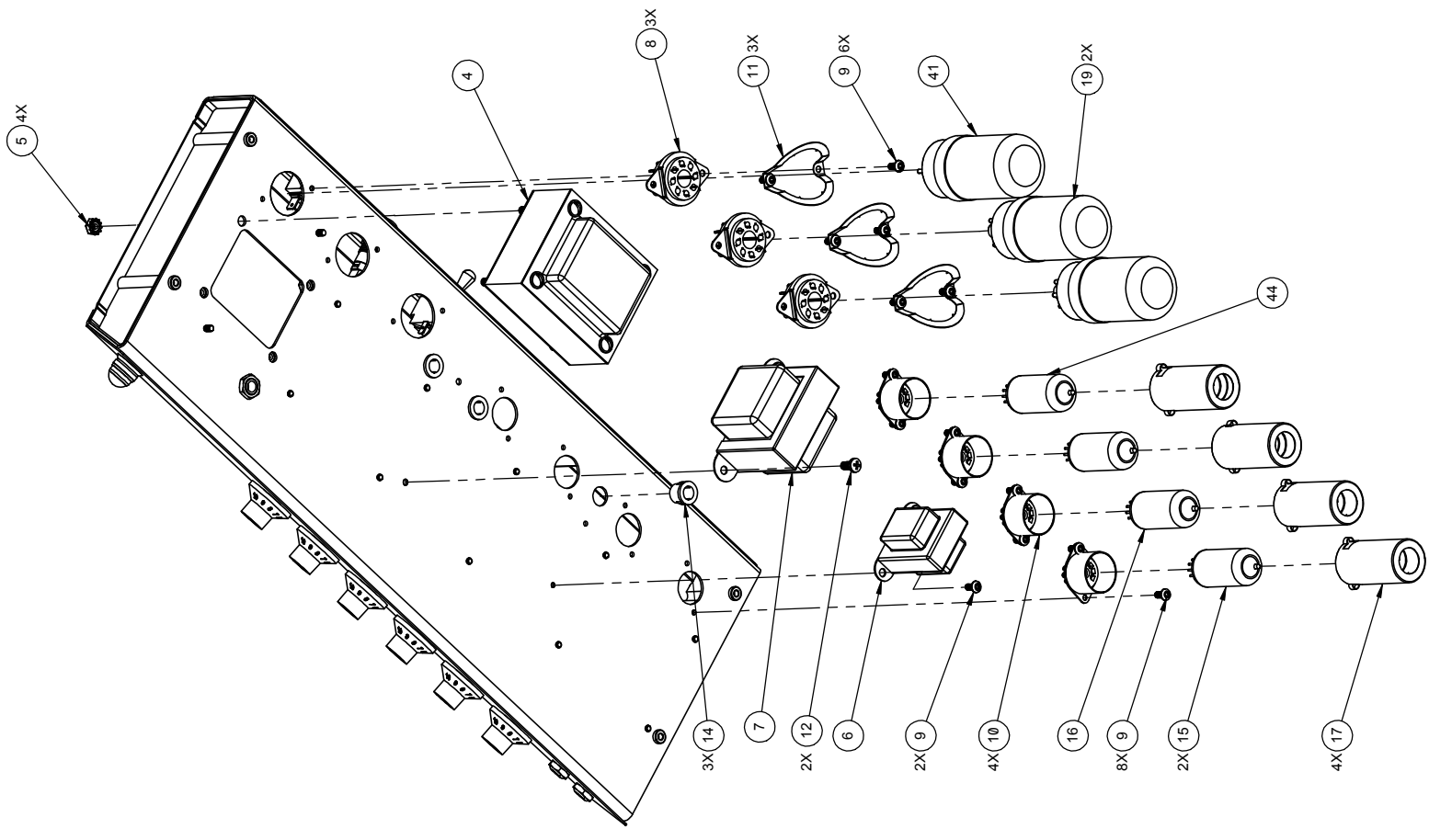
CHART A



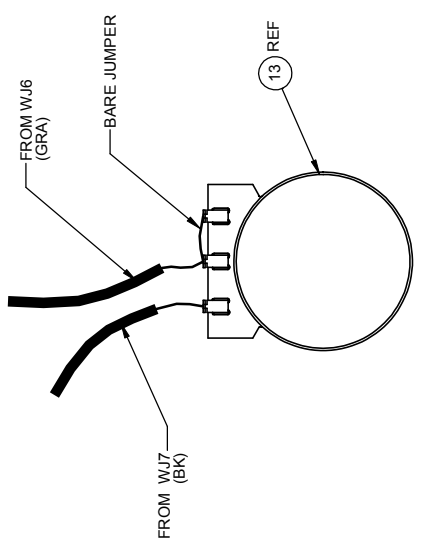
VIEW C
V2 WIRING
(INSIDE CHASSIS)



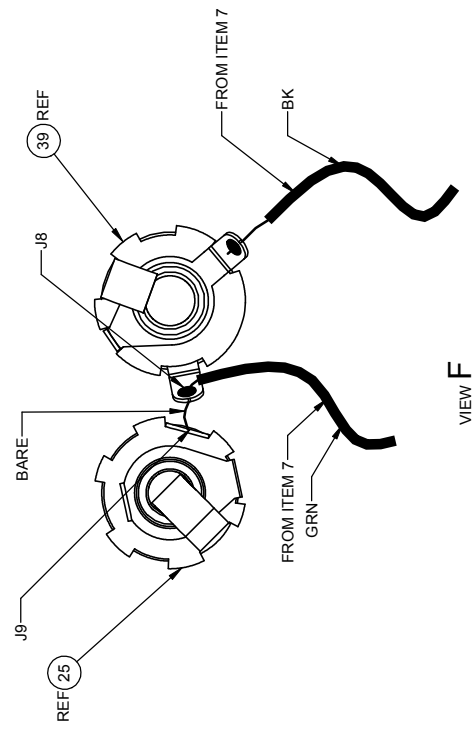
VIEW D
REVERB JACK WIRING



VIEW B
DIODE ON SOCKET DETAIL
(INSIDE CHASSIS)



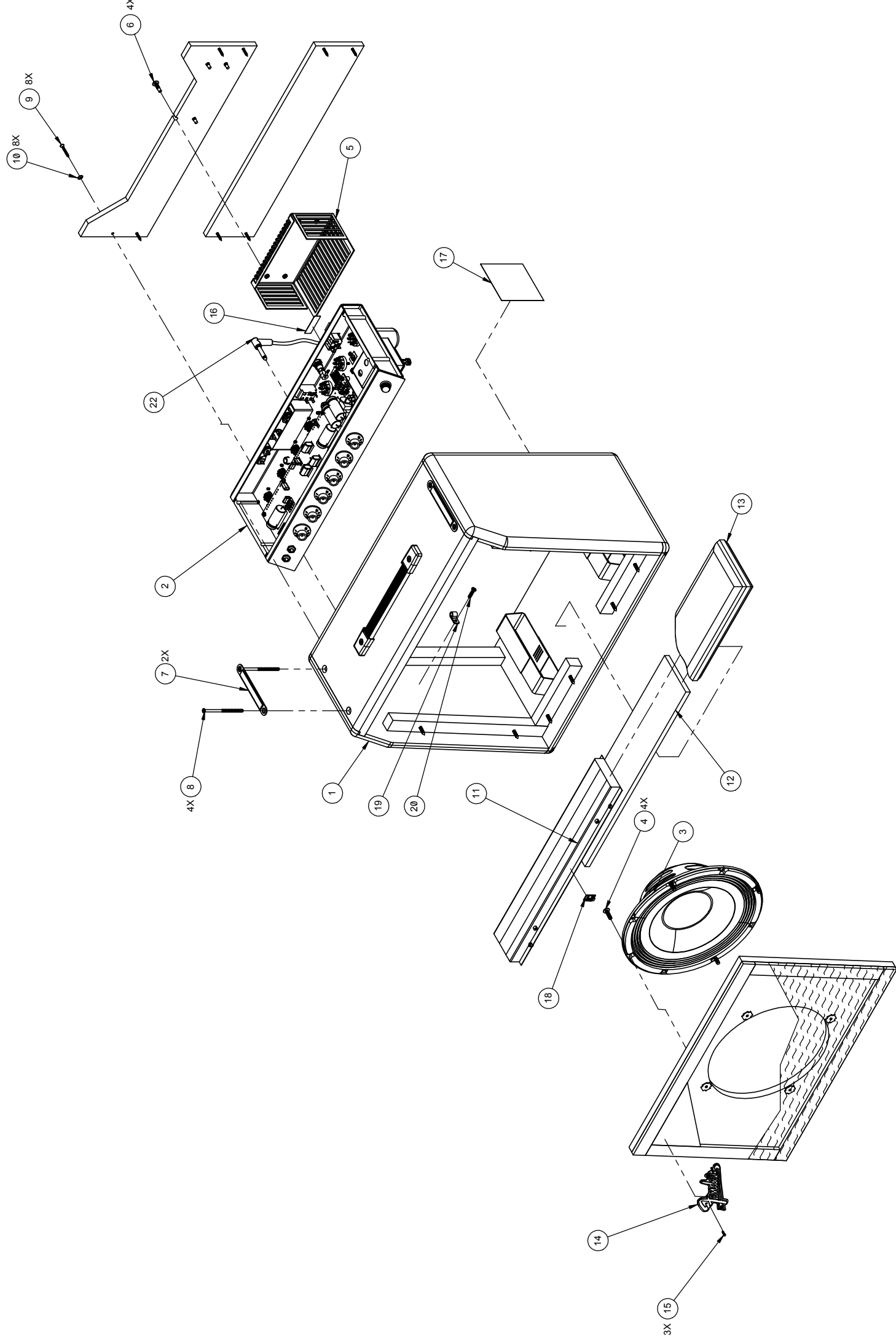
VIEW E
WIRING DETAIL



VIEW F

ENGINEER		Fender		FENDER MUSICAL INSTRUMENTS CORP. CORONA, CALIFORNIA U.S.A.	
DRAWN	DATE	05/07/2007	ENG.	DATE	
DFT.	DATE		ENG.	DATE	
APPROVED	DATE		SCALE	NONE	
	DATE		SHEET	2 of 2	
			PART NUMBER	0075152000	
			SIZE	D	
			SCALE	NONE	
			ASSEMBLY	B	

CHASSIS ASSEMBLY 65 PRINCETON REVERB




SERVICE MANUAL DOCUMENT

06/03/2008

N.S. = NOT SHOWN

24	1	FTSW VIB/REV/ (099-4058-000) (N.S.)
23	1	POWER CORD (N.S.)
22	1	CABLE REVERB 48" RIGHT ANGLE
20	1	SCRW PB 8x3/4 PHP ZI
19	1	CLAMP CABLE NYL SCRWM MNT 1/4
18	1	CLAMP CABLE NYL ADHESIVE
17	1	LABEL TUBE 65 PRINCETON REVERB
15	3	SCRW SMA 2x3/8 PHP BLX sell 049
14	1	NAMEPLATE FNDR 65 TWIN
13	1	REVERB BAG
12	1	PAD CARDBOARD REVERB #12FN86
11	1	REVERB UNIT 4 SPRING 44B3C1B
10	8	WSHR C/SUNK NICKEL #6
9	8	SCRW SMA #6x1 OHP NI
8	4	SCRW M 8-32x3-1/4 OHP NI CP
7	2	STRAP CHASSIS 4" NICKEL
6	4	SCRW M 10-32x3/4 THP NI
5	1	TUBE CAGE 65 PRINCETON REVERB
4	4	SCRW M 10-32 3/4 THP STL BLX
3	1	SPKR 10" 8ohms JENSEN C10R
2	1	CHASSIS ASSY 65 PRINCETON REVERB
1	1	CABINET ASSY 65 PRINCETON REVERB

ENGINEER _____
 DRAWN _____
 DATE 04/18/2007
 DFT. _____ ENG. _____
 DATE _____ DATE _____
 APPROVED _____
 DATE _____


 FENDER MUSICAL INSTRUMENTS CORP.
 CORONA, CALIFORNIA U.S.A.

TITLE
**END ITEM ASSEMBLY
 65 PRINCETON REVERB**

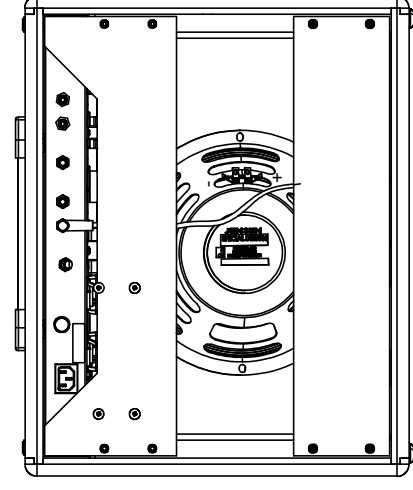
SHEET	SIZE	PART NUMBER	REV
1 of 2	D	2172000000	B
SCALE	NONE	MASTER/ASSEMBLY	

D

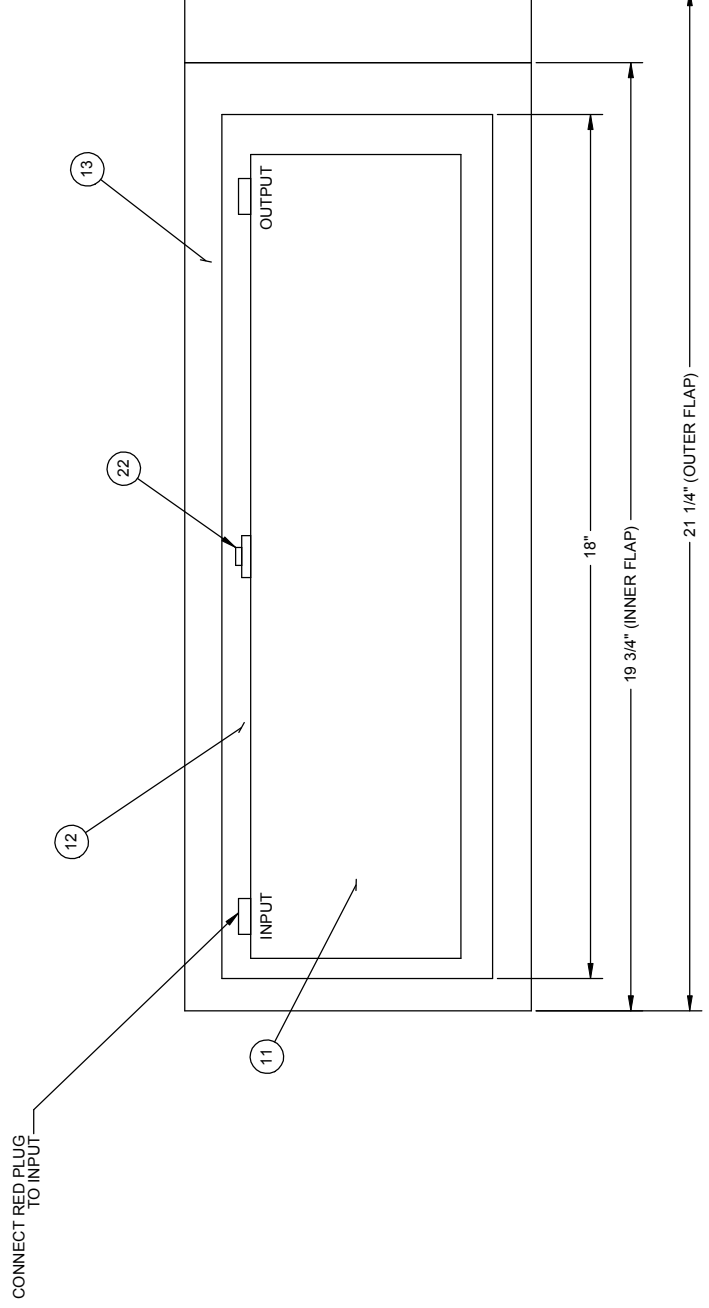
C

B

A

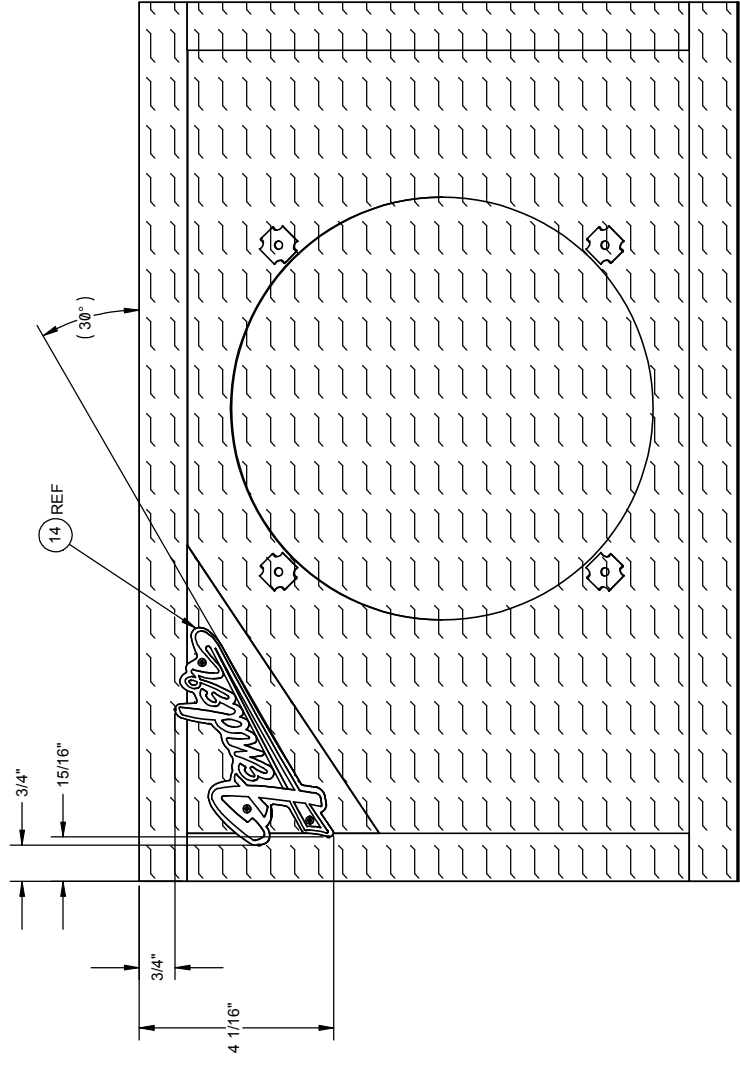


BACK PANEL AND SPEAKER DETAIL
SCALE: 1/4



REVERB ASSEMBLY DETAIL

NOTE: PLACE ITEMS 11 & 12 IN BAG (ITEM 13). FOLD END WITH FLAP PLACED UNDER ITEM 12. ORIENT IN CABINET WITH JACKS FACING BAFFLE.
SCALE: 1/2



LOGO PLACEMENT VIEW
SCALE: 1/2

SERVICE MANUAL DOCUMENT
06/03/2008

MATERIAL		SEE PARTS LIST		ENGINEER		DRAWN		DATE		04/18/2007		FENDER		FENDER MUSICAL INSTRUMENTS CORP. CORONA, CALIFORNIA U.S.A.	
FINISH		NONE		DATE		DATE		DATE		DATE		SHEET		2012	
TOL. UNLESS NOTED		FRACT.		TOL.		TOL.		TOL.		TOL.		TITLE		END ITEM ASSEMBLY 65 PRINCETON REVERB	
.X		+/- .032		.XXX		+/- .050		.XXX		+/- .015		APPROVED		PART NUMBER	
ANGLES		+/- .5 DEGREES		HOLE DIA.		+0.005 -0.001		UNMARKED ANGLES ARE 90 DEGREES.		DATE		SCALE		NONE	
NONE		NONE		NONE		NONE		NONE		NONE		SIZE		D	
NONE		NONE		NONE		NONE		NONE		NONE		SHEET		2012	
NONE		NONE		NONE		NONE		NONE		NONE		SCALE		NONE	
NONE		NONE		NONE		NONE		NONE		NONE		PART NUMBER		2172000000	
NONE		NONE		NONE		NONE		NONE		NONE		MASTER/ASSEMBLY		B	

6

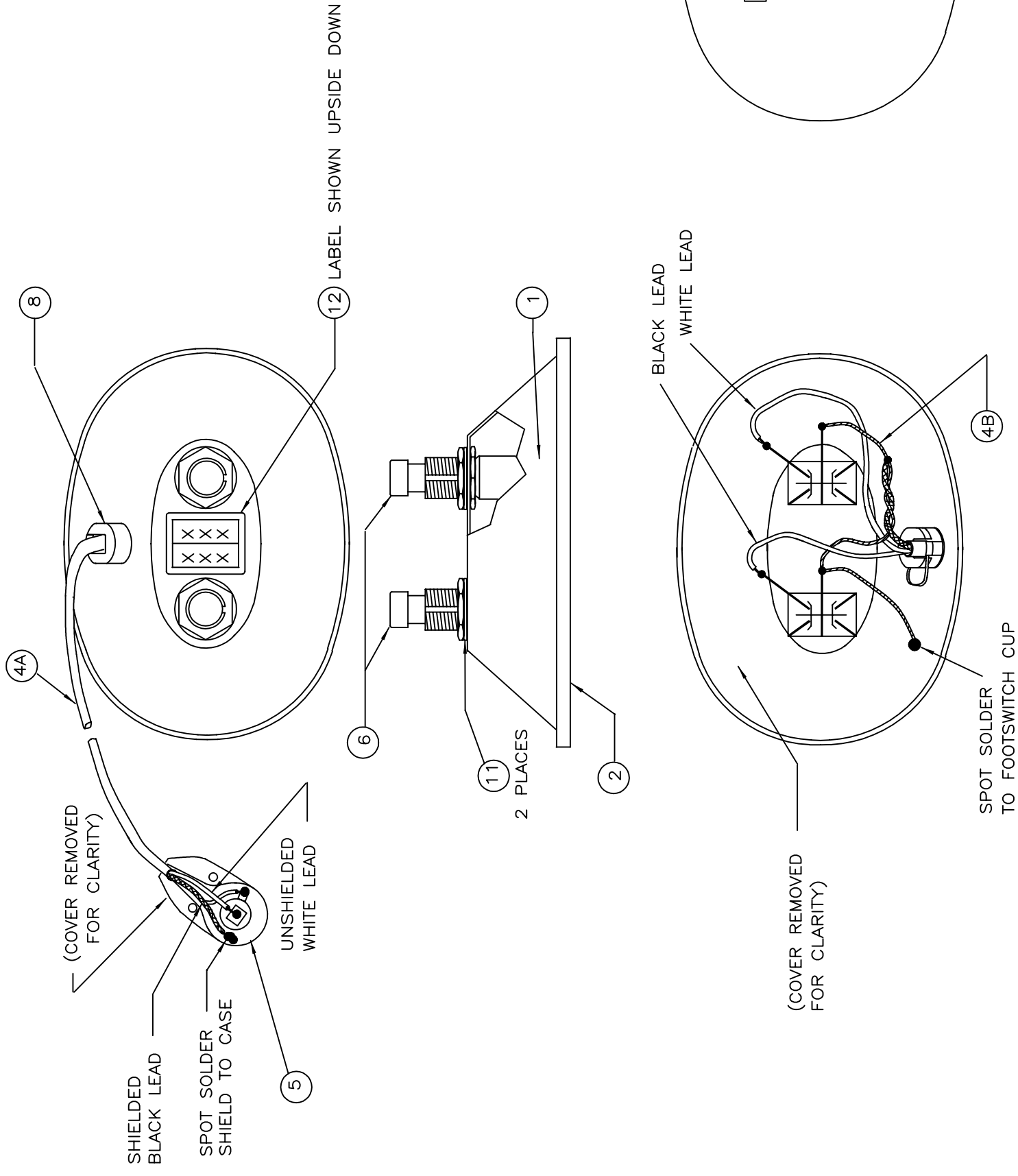
5

4

3

2

1



SERVICE MANUAL DOCUMENT

06/03/2008

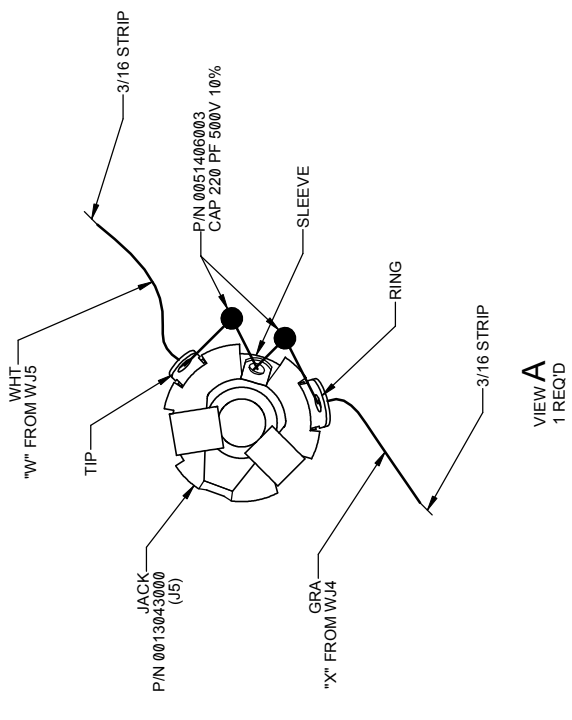
14	1	LABEL MADE IN MEXICO
13		
12	1	DECAL PER CHART ABOVE
11	2	WASHER FLAT
10		
9		
8	1	BUSHING STRAIN RELIEF
7		
6	2	SWITCH
5	1	PLUG, 3 CONDUCTOR
4	1	WIRE SET
3		
2	1	COVER
1	1	CUP, FOOTSWITCH

ITEM	QTY.	PART #	DESCRIPTION
ENGINEER			
DRAWN			
DATE 8/1/90			
DFT.	ENG.	ENG.	TITLE
DATE	DATE	DATE	ASSEMBLY, FOOT SWITCH 2 BUTTON, VINTAGE STYLE
APPROVED	1/1	DRAWING NUMBER	SHEET SIZE
DATE	N/A	0037211000	1/1
		D	SCALE
			N/A
			REV.
			MASTER
			G



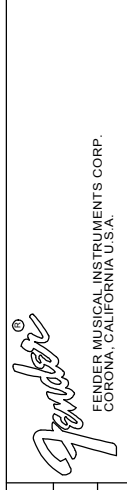
FENDER MUSICAL INSTRUMENTS CORP.
CORONA, CALIFORNIA 91720

ITEM	QTY	MATERIAL PART NUMBER	WIRE GAUGE	WIRE COLOR	CUT LENGTH	STRIP ENDS		APPLY TERMINATION TO ENDS		REFERENCE
						(A)	(B)	(A)	(B)	
A	2	0026844000	24	YEL	2 1/2	3/16	1/4	--	--	3(V1) TO V1-3 8(V1) TO V1-8
B	1	0026844000	24	YEL	2 1/2	3/16	3/4	--	--	3/8(V2) TO V2-3,8
C	3	0026844000	24	YEL	3	3/16	1/4	--	--	8(V3) TO V3-8 8(V5) TO V5-8 8(V4) TO V4-8
D	2	0026844000	24	YEL	4	3/16	1/4	--	--	3(V3) TO V3-3 3(V4) TO V4-3
E	1	0026844000	24	YEL	5	3/16	1/4	--	--	8(V6) TO V6-8
F	4	0026845000	24	GRN	2 1/2	3/16	1/4	--	--	2(V1) TO V1-2 7(V1) TO V1-7 2/7(V2) TO V2-2 7(V3) TO V-7
G	3	0026845000	24	GRN	3	3/16	1/4	--	--	2(V3) TO V3-2 2(V4) TO V4-2 7(V4) TO V4-7
H	1	0026845000	24	GRN	4	3/16	1/4	--	--	5(V5) TO V5-5
J	1	0026845000	24	GRN	5	3/16	1/4	--	--	5(V6) TO V6-5
K	3	0027165000	24	BLU	2 1/2	3/16	1/4	--	--	1(V1) TO V1-1 6(V1) TO V1-6 1(V3) TO V3-1
L	3	0027165000	24	BLU	3	3/16	1/4	--	--	6(V3) TO V3-6 1(V4) TO V4-1 8(V4) TO V4-6
M	1	0027165000	24	BLU	3	3/16	3/4	--	--	1/6(V2) TO V2-1,6
N	1	0027165000	24	BLU	4	3/16	1/4	--	--	3(V5) TO V5-3
P	1	0027165000	24	BLU	5	3/16	1/4	--	--	3(V6) TO V6-3
R	1	0026846000	24	ORN	4	3/16	1/4	--	--	4(V6) TO V6-4
S	1	0026846000	24	ORN	4 3/4	3/16	1/4	--	--	4(V6) TO V6-4
T	1	0027166000	24	RED	4 1/2	3/16	1/4	--	--	WJ1 TO J3 (REVERB IN)
U	1	0027140000	24	BK	4	3/16	1/2	--	--	WJ2 TO J3/J4 GND
V	1	0027170000	24	WHT	4 1/2	3/16	1/4	--	--	WJ3 TO J4 (REVERB OUT)
W	1	0027170000	24	WHT	5	3/16	1/4	--	--	WJ5 TO J5 - TIP
X	1	0027171000	24	GRA	6	3/16	1/4	--	--	WJ4 TO J5 - RING
Y	1	0027171000	24	GRA	3	3/16	1/2	--	--	WJ6 TO R22-CW, WIPER
Z	1	0027140000	24	BK	3	3/16	1/4	--	--	WJ7 TO R22-CCW
AA	1	0027188000	18	YEL	6	3/16	1/4	--	--	WJ10 TO V7-2 (TWIST WITH V7-8)
BB	1	0027188000	18	YEL	6	3/16	1/4	--	--	WJ13 TO V7-8 (TWIST WITH V7-2)
CC	1	9907564500	18	BK/WHT TWPR	4	1/2	1/4	--	--	BK-WJ11 TO V5-2 WHT-WJ12 TO V5-7
DD	1	0027189000	18	GRN	5	3/16	1/4	--	0027113000	WJ15 PCB GND TO CHASSIS GND
EE	1	0027186000	18	RED	6 1/2	3/16	1/4	--	--	WJ9 TO V7-3 (D6 ANODE)-TWIST WITH XFMR RED WIRES
FF	1	0027195000	18	WHT	7 1/2	1/4	3/16	0025737000	--	WJ8 TO POWER SWITCH
GG	1	0027182000	18	BK	6	1/4	3/16	0031670000	--	WJ16 TO FUSEHOLDER, SIDE TERMINAL
HH	1	0027171000	24	GRA	6	3/16	1/4	--	--	WJ14 TO J9-TIP(EXT SPKR)



SERVICE MANUAL DOCUMENT
06/03/2006

MATERIAL SEE CHART		ENGINEER	DRAWN	
FINISH NONE		DATE	08/21/2007	ENG.
TOL. UNLESS NOTED		DATE		DATE
FRACT. +/- .1/32		APPROVED		
.X +/- .050		SHEET	10/1	SCALE
.XX +/- .015		SIZE	D	NONE
ANGLES +/- .5 DEGREES		PART NUMBER	0075612000	
HOLE DIA. +/- .005 .001		REV	B	
UNMARKED ANGLES ARE 90 DEGREES.		PART	1	



WIRE SET
PCB ASSEMBLY
65 PRINCETON REVERB

THIS DOCUMENT CONTAINS INFORMATION OF A PROPRIETARY NATURE TO FENDER MUSICAL INSTRUMENTS AND IS SUBMITTED TO YOU IN CONFIDENCE AND SHALL NOT BE DISCLOSED OR TRANSMITTED TO OTHERS WITHOUT AUTHORIZATION FROM FENDER MUSICAL INSTRUMENTS CORP.

REV EC NUMBER BY DATE/ ARCHIVE

ITEM	QTY	MATERIAL PART NUMBER	WIRE GAUGE	WIRE COLOR	CUT LENGTH	STRIP ENDS		APPLY TERMINATION TO ENDS		REFERENCE
						(A)	(B)	(A)	(B)	
A	3	9907584600	18	BK/WHT PAIR	4	3/8	3/8	-	--	BK-PINS 4.5 ON V1-V4 WHT-PIN 9 ON V1-V4
B	1	9907584600	18	BK/WHT PAIR	5	3/8	1/4	-	--	BK-V4-4.5 TO V5-2 WHT-V4-9 TO V5-7
C	1	9907584600	18	BK/WHT PAIR	4 1/2	1/4	1/4	-	--	BK-V5-2 TO V6-2 WHT-V5-7 TO V6-7
D	2	0026845000	24	GRN	10	1/4	1/4	-	--	PILOT LIGHT TO V6-2 PILOT LIGHT TO V6-7
E	1	0027195000	18	WHT	6	1/4	1/4	0025737000	0025737000	IEC LINE NEUTRAL TO POWER SWITCH
F	1	0027182000	18	BK	6	1/4	1/4	0025737000	0025737000	IEC LINE HOT TO POWER SWITCH
G	1	0027182000	18	BK	3	1/4	1/4	0025737000	0031670000	POWER SWITCH TO FUSE HOLDER REAR TERMINAL
H	1	0055811000	18	GRN/YEL	2 1/2	1/4	1/4	0025737000	0027113000	IEC GND TO CHASSIS GND SCREW
J	1	0026845000	24	GRN	2 1/2	1/4	1/4	-	--	V2-2 TO V2-7

SERVICE MANUAL DOCUMENTS

06/03/2008

MATERIAL	ENGINEER	DRAWN	
SEE CHART			
FINISH	DATE	08/21/2007	
NONE	DFT. ENG.		
	DATE		
TOL. UNLESS NOTED	APPROVED		
FRACT. +/- 1/32	DATE		
X +/- .050			
XX +/- .015			
XXX +/- .010			
ANGLES +/- .5 DEGREES			
HOLE DIA. +/- .005 - .001			
UNMARKED ANGLES ARE 90 DEGREES.			
	ENGINEER	TITLE	
		WIRE SET	
		CHASSIS ALL VOLTAGES	
		65 PRINCETON REVERB	
		SHEET	REV
		1 of 1	B
		SCALE	PART
		NONE	0075613000 B

