



**Saradee<sup>®</sup>**

**Industries Private Limited**

**PLAIN APPAREL CATALOGUE**

# Mens



Durable



Anti Pilling



Color Guaranteed



Breathable



Soft Feel



**Code : sa2014**



**Code : sa2015**



**Code : sa2016**



**Code : sa2017**



**Code : sa2018**



**Code : sa2019**



**Code : sa2020**



**Code : sa2021**



**Code : sa2022**



**Code : sa2023**

\*Garment Price differs based on cotton price





Durable



Anti Pilling



Color Guaranteed



Breathable



Soft Feel

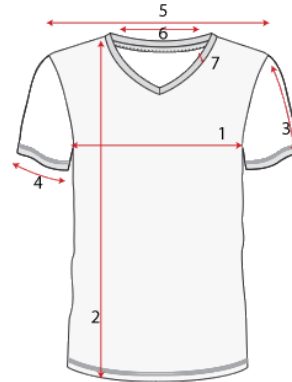
# V - Neck Half Sleeve – Men’s – 160 GSM

**Code : sa2014**



## Fabric Quality

- \*100% Ring Spun Super Combed Cotton – 160 GSM
- \*Single Jersey Knit
- \*Only Heather Colors are 88% Cotton 12% Polyester
- \*Bio Washed / Color Fastness Guaranteed



All Measurements are in Inches					
Measurement	S-38	M-40	L-42	XL-44	2XL-46
Chest	19	20	21	22	23
Body Length ( HPS)	26	27	28	29	30
Sleeve Length	7	7.5	8	8.5	9
Sleeve Open	6.25	6.5	6.75	7	7.25
Shoulder	16	17	18	19	20
Neck Width	7.75	8	7.25	8.5	8.75
Rib Width	3/4				

## Available 05 Colors



GREY HTR



MAROON



NAVY



WHITE



BLACK



\*Garment Price differs based on cotton price



Durable



Anti Pilling



Color Guaranteed



Breathable



Soft Feel

# Open Bottom Track Pant – Men’s – 200 GSM

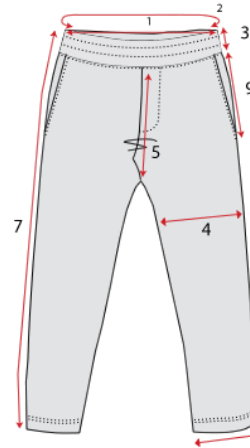


Code : sa2015



## Fabric Quality

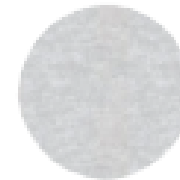
- \*100% Ring Spun Super Combed Cotton – 200 GSM
- \*Single Jersey Knit
- \*Only Heather Colors are 88% Cotton 12% Polyester
- \*Bio Washed / Color Fastness Guaranteed



All Measurements are in Inches

Measurement	S-29	M-31	L-33	XL-35	2XL-37
Full Waist Relaxed	29	31	33	35	37
Full Waist Stretched	35	39	41	43	45
Waist Band Height	3	3	3	3	3
Thigh	10	10.5	11	11.5	12
Front Rise	10.5	11	11.5	12	12.5
Back Rise	13	14	14.5	15	15.5
Total Length	8-Feb	40	41	42	43
Leg Open	6.5	7	7.5	8	8.5
Side Pocket	12				

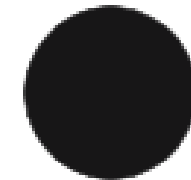
## Available 03 Colors



GREY HTR



NAVY



BLACK



Brand Your Logo  
HD Print Can be done  
With additional Charges



Durable



Anti Pilling



Color Guaranteed



Breathable



Soft Feel

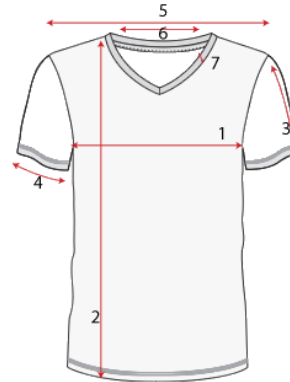
# Raglan Half Sleeve – Men’s – 160 GSM

Code : sa2016



## Fabric Quality

- \*100% Ring Spun Super Combed Cotton – 160 GSM
- \*Single Jersey Knit
- \*Only Heather Colors are 88% Cotton 12% Polyester
- \*Bio Washed / Color Fastness Guaranteed



All Measurements are in Inches

Measurement	S-38	M-40	L-42	XL-44	2XL-46
Chest	19	20	21	22	23
Body Length ( HPS)	26	27	28	29	30
Sleeve Length	7	7.5	8	8.5	9
Sleeve Open	6.25	6.5	6.75	7	7.25
Shoulder	16	17	18	19	20
Neck Width	7.75	8	7.25	8.5	8.75
Rib Width	3/4				

## Available 05 Colors



WHITE |  
CARDINALHTR



WHITE | BLACK



GREY | NAVY HTR



GREY | BLACK



YELLOW | NAVY HTR





Durable



Anti Pilling



Color Guaranteed



Breathable



Soft Feel

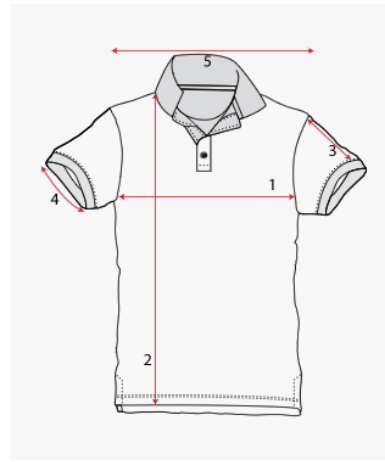
# Polo T-shirt Half Sleeve – Men’s – 240 GSM



**Code : sa2017**

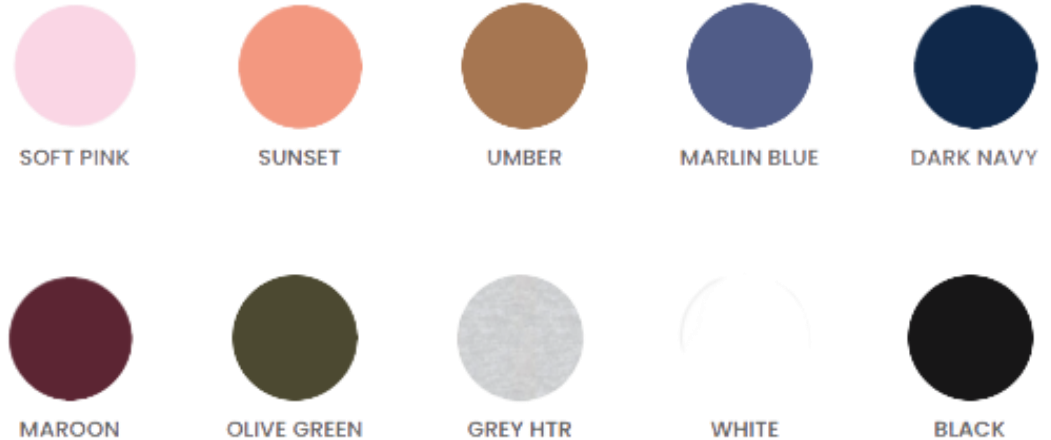
## Fabric Quality

- \*100% Ring Spun Super Combed Cotton – 240 GSM
- \*Single Pique Knit
- \*Only Heather Colors are 88% Cotton 12% Polyester
- \*Bio Washed / Color Fastness Guaranteed
- \* Ribbed Collar & Cuff



All Measurements are in Inches					
Measurement	S-38	M-40	L-42	XL-44	2XL-46
Chest	19	20	21	22	23
Body Length ( HPS)	26	27	28	29	30
Sleeve Length	7	7.5	8	8.5	9
Sleeve Open	6	6.5	7	7.5	8
Shoulder	16	17	18	19	20

## Available 10 Colors



\*Garment Price differs based on cotton price



# Pocket Polo T-shirt Half Sleeve – Men’s – 240 GSM



Durable



Anti Pilling



Color Guaranteed



Breathable



Soft Feel



**Code : sa2018**

### Fabric Quality

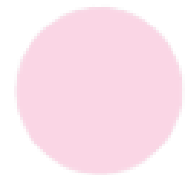
- \*100% Ring Spun Super Combed Cotton – 240 GSM
- \*Single Pique Knit
- \*Only Heather Colors are 88% Cotton 12% Polyester
- \*Bio Washed / Color Fastness Guaranteed
- \* Ribbed Collar & Cuff



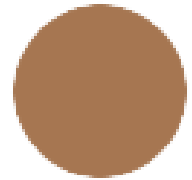
All Measurements are in Inches

Measurement	S-38	M-40	L-42	XL-44	2XL-46
Chest	19	20	21	22	23
Body Length ( HPS)	26	27	28	29	30
Sleeve Length	7	7.5	8	8.5	9
Sleeve Open	6	6.5	7	7.5	8
Shoulder	16	17	18	19	20

### Available 04 Colors



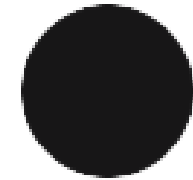
SOFT PINK



UMBER



DARK NAVY



BLACK

\*Garment Price differs based on cotton price

# Pullover Hoodies Full Sleeve – Men's – 300 GSM



**Code : sa2019**

## Fabric Quality

- \*100% Ring Spun Super Combed Cotton – 300 GSM
- \*Loop Knit Fleece
- \*Only Heather Colors are 88% Cotton 12% Polyester
- \*Bio Washed / Color Fastness Guaranteed
- \* Brushed Inside



All Measurements are in Inches

Measurement	S-38	M-40	L-42	XL-44	2XL-46
Chest	20	21	22	23	24
Body Length ( HPS)	27	28	29	30	31
Sleeve Length	26	26.5	27	27.5	28
Shoulder	18	18.5	19	19.5	20

## Available 08 Colors



Durable



Anti Pilling



Color Guaranteed



Breathable



Soft Feel



\*Garment Price differs based on cotton price



# Full Zipper Hoodies Full Sleeve – Men’s – 300 GSM



**Code : sa2020**

## Fabric Quality

- \*100% Ring Spun Super Combed Cotton – 300 GSM
- \*Loop Knit Fleece
- \*Only Heather Colors are 88% Cotton 12% Polyester
- \*Bio Washed / Color Fastness Guaranteed
- \* Brushed Inside



All Measurements are in Inches

Measurement	S-38	M-40	L-42	XL-44	2XL-46
Chest	20	21	22	23	24
Body Length ( HPS)	27	28	29	30	31
Sleeve Length	26	26.5	27	27.5	28
Shoulder	18	18.5	19	19.5	20

## Available 08 Colors



Durable



Anti Pilling



Color Guaranteed



Breathable



Soft Feel



\*Garment Price differs based on cotton price



Durable



Anti Pilling



Color Guaranteed



Breathable



Soft Feel

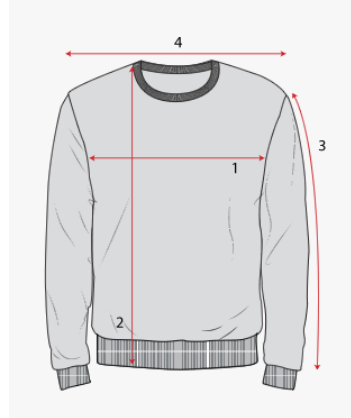
# Crew Neck Sweatshirt – Men’s – 300 GSM



**Code : sa2021**

## Fabric Quality

- \*100% Ring Spun Super Combed Cotton – 300 GSM
- \*Loop Knit Fleece
- \*Only Heather Colors are 88% Cotton 12% Polyester
- \*Bio Washed / Color Fastness Guaranteed
- \* Brushed Inside



Measurement	S-38	M-40	L-42	XL-44	2XL-46
Chest	20	21	22	23	24
Body Length ( HPS)	27	28	29	30	31
Sleeve Length	26	26.5	27	27.5	28
Shoulder	18	18.5	19	19.5	20
Neck Width	7.5	8	8.5	9	9.5
Rib width	3/4				

## Available 08 Colors



MAROON



GREY HTR



NAVY



ROYAL BLUE



OLIVE GREEN



WHITE



BLACK



RED



Durable



Anti Pilling



Color Guaranteed



Breathable



Soft Feel

# Plain Tank Top – Men’s – 160 GSM



**Code : sa2022**

## Fabric Quality

\*100% Ring Spun Super Combed Cotton – 160 GSM

\*Single Jersey Knit

\*Only Heather Colors are 88% Cotton 12% Polyester

\*Bio Washed / Color Fastness Guaranteed



All Measurements are in Inches

Measurement	S-38	M-40	L-42	XL-44	2XL-46
Chest	19	20	21	22	23
Body Length ( HPS)	26	27	28	29	30
Arm scye	9	9.5	10	10.5	11
Neck Width	8.5	9	9.5	10	10.5

## Available 06 Colors



MAROON



GREY HTR



NAVY



ROYAL BLUE



WHITE



BLACK

\*Garment Price differs based on cotton price





Durable



Anti Pilling



Color Guaranteed



Breathable



Soft Feel

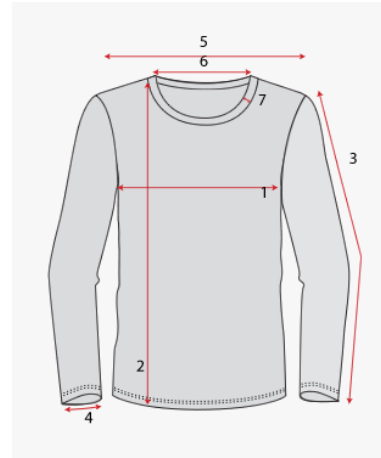
# Full Sleeve Round neck – Men's – 180 GSM

Code : sa2023



## Fabric Quality

- \*100% Ring Spun Spun Super Combed Cotton – 180 GSM
- \*Single Jersey Knit
- \*Only Heather Colors are 88% Cotton 12% Polyester
- \*Bio Washed / Color Fastness Guaranteed



All Measurements are in Inches

Measurement	S-38	M-40	L-42	XL-44	2XL-46
Chest	19	20	21	22	23
Body Length ( HPS)	26	27	28	29	30
Sleeve Length	23.75	24.25	24.75	25.25	25.75
Sleeve Open	6	6.5	7	7.5	8
Shoulder	16	17	18	19	20
Neck Width	7.75	8	7.25	8.5	8.75
Rib Width	3/4				

## Available 07 Colors



RED



MAROON



GREY HTR



NAVY



ROYAL BLUE



WHITE



BLACK

\*Garment Price differs based on cotton price



Durable



Anti Pilling



Color Guaranteed



Breathable



Soft Feel

# We Do Your Branding



Based on your requirement and number of colors in your logo the price for Front and Back Printing / Embroidery cost will be added on top of the Plain Garment Price.



### Bank Details

Account Name : Sarodee Industries Private Limited

Bank Name : ICICI bank

Branch : Koyembedu, Chennai

Current Account Number : 189705001906

IFSC Code : ICIC0001897



- \* All the payments are to be made by electronic fund transfer or by cheque deposit only.
- \* **Do not make any payment or transfer in the form of cash.**
- \* After making the payment, we would appreciate if you could mail the pay-in-slip with the booking reference.



**Industries Private Limited**

## Sarodee Industries Private Limited

No 12, Jawaharlal Nehru Salai, Inner Ring Road,  
Arumbakkam, Chennai – 600106

Email : [sk@sarodee.com](mailto:sk@sarodee.com) / Phone : +91-7010671289

Web : [www.sarodee.com](http://www.sarodee.com)

GST : 33ABICS3938F1ZA