

“JOBSITE SAFETY” ~ ILLUSTRATED SERIES

AN OCCUPATIONAL SAFETY & HEALTH TRAINING SERIES FOR HIGH HAZARD INDUSTRIES

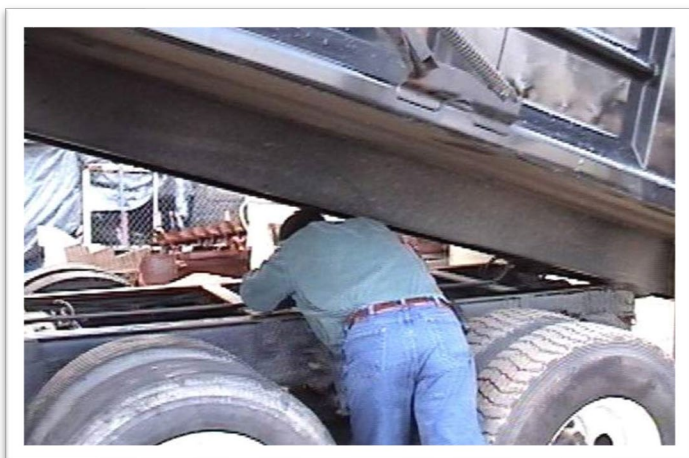
©2021 Courage Safety Systems, LLC, San Clemente, CA 92673 To Order, Call: (949) 498-2688 #FF0121

THE FATAL FOUR

A new year should bring renewed hope for changing old/bad habits. The Fatal Four Construction hazards provide a great starting point for change.

Struck By

Struck-by objects (*right*) is a leading cause of construction-related deaths. Approximately 75% of struck-by fatalities involve heavy equipment such as trucks or cranes.



Caught In / Between (left)

From 2011 to 2015, 275 construction workers were killed in caught-in/between incidents, which is more workers killed than in any other major industry. Nearly 67% of those who died were caught or crushed in a collapse of materials.

Falls from Elevation

Falls are the leading cause of construction-worker fatalities, accounting for 1/3 of deaths in the industry. In 2017, there were 366 fall fatalities out of 971 total fatalities. Almost 2/3 of fatal falls were from roofs, scaffolds, ladders.



Electrocution

Electrocutions are the 4th leading cause of death among construction workers. An average of 143 workers are killed each year electricity. Electrical workers had the most electrocutions per year, followed by construction laborers, carpenters, supervisors of non-electrical workers, and roofers.