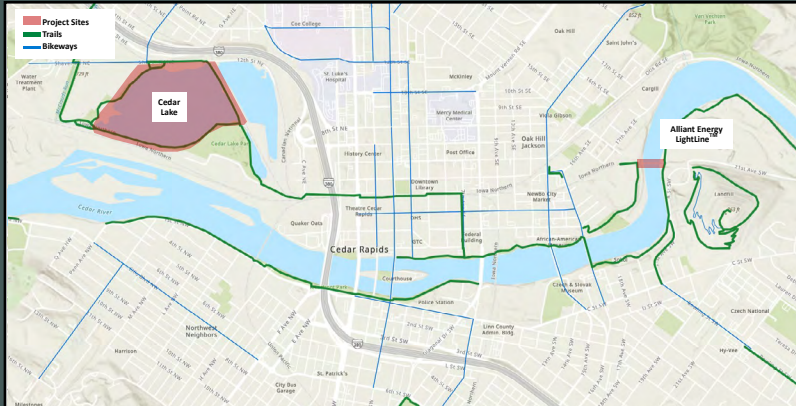


# SPRING 2026

## Project Update



## 2026: The year it all comes together!

After years of planning, fundraising, and more planning, the ConnectCR project is nearing the finish line. The Alliant Energy LightLine™ is scheduled to be completed this fall, and most of the ConnectCR amenities at Cedar Lake should be in place by the end of the year.

### LATEST TIMELINE

**Spring 2026:** Cedar Lake construction begins on Shaver Road cul-de-sac and trailhead parking.

**May 2026:** ConnectCR Bike Jersey pre-orders.

**Summer 2026:** Cedar Lake construction begins on recreational amenities—playground and challenge course, ADA-accessible kayak launch, fishing piers, restrooms, NW nature area, and trail reconstruction (north and south trail sections) *Project completion estimate: December 2026\**.

**June 28, 2026:** ConnectCR project report featured in [The Gazette Sunday Special Section](#).

**Fall 2026:** Alliant Energy LightLine™ Opens!\*

**Fall 2026:** Cedar Lake South Cell: Bidding opens for upstream sediment removal and wetland/shoreland restoration projects. *Project completion estimate: Fall 2027\**.

*Note: this is a City of Cedar Rapids project and not affiliated with ConnectCR.*

You can also check the [City of Cedar Rapids' website](#) for construction updates and photos.

*\*All timelines are subject to change given the nature of construction, availability of materials, and weather impacts.*



## Take a Lap around the Lake!

Cheers to our friends at Sag Wagon on their renovations and all they are doing to show off Cedar Lake. About once a month, the Sag hosts *Lap the Lake!* --an organized walk, bike, run, skip, whatever you like—around the lake. With the newly paved lakeside trail, it's a fun, easy loop around the lake, and you can go as many times as you like.

Each lap = approximately one mile. Check out their [Facebook page](#) for the next *Lap the Lake!* event on Saturday, May 30.





## Alliant Energy LightLine™ Construction Update

Construction crews continue to make incredible progress on the Alliant Energy LightLine™. The bridge's remaining piers are being poured on the Mount Trashmore side of the river, where crews are also laying the foundation for the bridge's 164' tower. The location of the tower's base is becoming more evident with each passing day. The tower will rise between the lanes when the LightLine is a bifurcated bridge on the west/south side of the river.

After the piers are in, the bridge's beams will be trucked in. The beams and other bridge components are fabricated at an off-site

location. When those pieces are installed, the bridge will seem to come together quite quickly. This same process was used on the bridge's east/north side near Cargill and New Bohemia, where you can see three piers and beams in place, waiting to connect to the rest of the bridge.

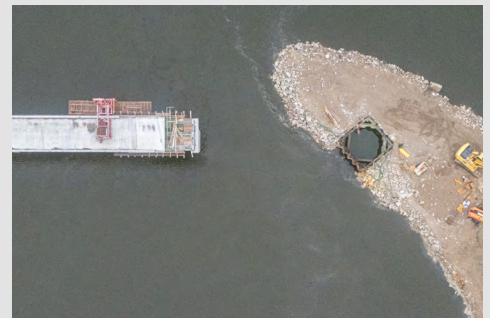
You can see a timelapse of the LightLine's construction [here](#). Also, regular updates on the bridge's construction are posted on the ConnectCR [Facebook page](#) and [website](#), including drone video and aerial pictures of the progress.



*The remaining piers are being poured on the Mount Trashmore side of the river*



*The east/north side near Cargill and New Bohemia*



*The tower's base is becoming more evident*



*A look at some of the planned amenities*

## Cedar Lake: Prepare for another summer of construction

Cedar Lake's revitalization is happening in phases. Phase I included the lakeside bike trail and jetty on the lake's southwest side, which are now open. Work is underway on Phase II, which includes improvements on Shaver Road, including a cul-de-sac and additional parking near the lake's southwest side.

Still to come this summer is Phase III, which includes many of the ConnectCR amenities mentioned in the timeline. The bid letting is scheduled for later this month, with construction to begin after July 1.

# ConnectCR is offering a limited-edition bike jersey!

A few years ago, some donors suggested ConnectCR offer its own bike jersey as a way to celebrate and promote our community project. We're pleased to report you can now order a limited-edition ConnectCR jersey. The jersey is made by Primal Wear, a popular high-performance cycling-wear company. The jerseys are the same cut as RAGBRAI jerseys, so if you have one of those jerseys, expect a similar fit. The jerseys are being sold at **Northtowne Cycling + Fitness** and pre-orders are now being taken.

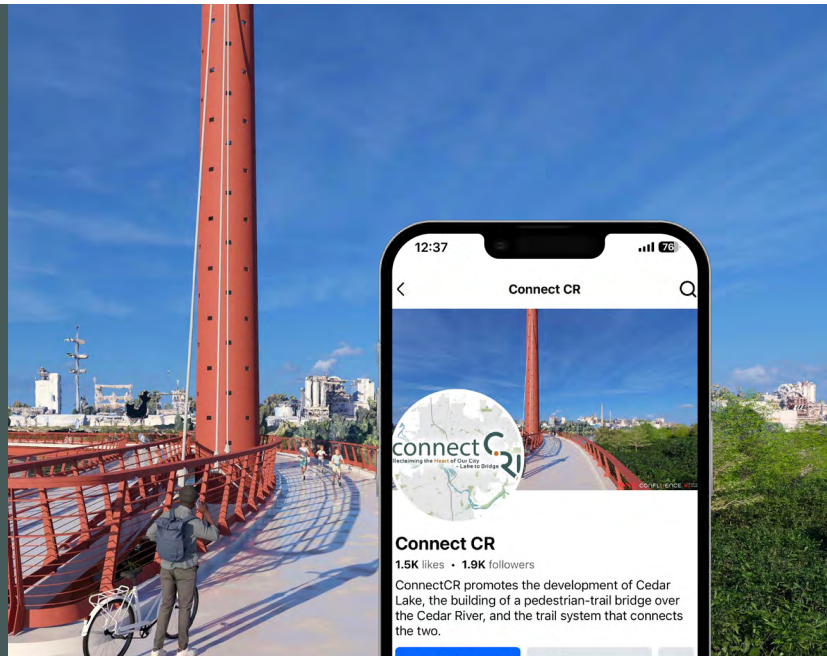
**\$69.99**

To pre-order, [click here](#).



## Thanks to everyone who visited with us at EcoFest!

Recently, we've also provided updates to Calvary Baptist Church and The NewBo/Czech Village SSMID.



If you or your organization would like an update on the project's progress, please email us at: [ConnectCR.org@gmail.com](mailto:ConnectCR.org@gmail.com)

You can also follow updates on our website: [ConnectCR.org](http://ConnectCR.org)

And on Facebook: [facebook.com/ConnectCR.org](https://facebook.com/ConnectCR.org)

