

## Welcome to Rhyddings Park

Rhyddings Park was originally the grounds of a private house belonging to a local mill owning family.

The first house at Rhyddings was demolished in 1853 and re-built in the style of an early Victorian country house for Mr Robert Watson, who owned nearby Rhyddings Mill, and was also connected with Stonebridge Mill in Oswaldtwistle.

Rhyddings Hall, as the house was known, ceased to be a private residence in 1909 when it was acquired by Oswaldtwistle

Urban District Council along with its grounds, to provide a recreational facility for the people of Oswaldtwistle.

Today the layout of the park owes much to Mr Watson's house, which was situated behind the ornamental balustrade, until it was demolished in the 1930's.

Friends of Rhyddings Park is a community group that works with the Council and with other bodies to raise funding and to organise events in the park. If you are interested in getting involved with the park please visit [www.rhyddingspark.org.uk](http://www.rhyddingspark.org.uk) for details.

**Rhyddings Routes** is a project funded by Big Lottery Awards For All and managed by the Civic Arts Centre on behalf of Friends of Rhyddings Park.

The idea behind the project is to get people walking around Oswaldtwistle a little more and exploring some of the great outdoor areas that we are lucky enough to have. There are four walks in the series that vary in difficulty and access. Some walks are suitable for wheelchairs and buggies, others involve crossing fields and stiles.

Each route is circular so you can join at any point and return to the same place to finish.

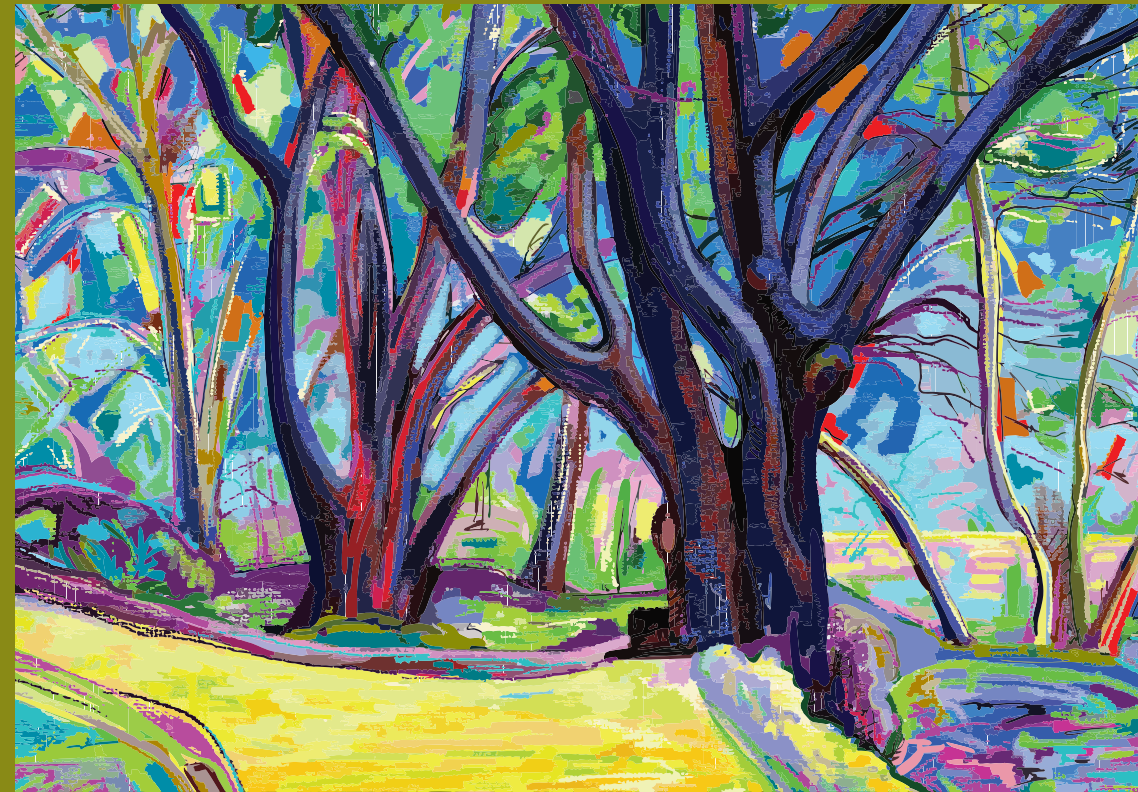
There are also activity sheets for young people which can be used in conjunction with the walks. Pick them up from various locations around around Oswaldtwistle or download from [www.civicartscentre.co.uk](http://www.civicartscentre.co.uk) along with all four of the maps.

*Thanks to Lucy Hamlin for devising the walks.*

# Rhyddings Routes

Rhyddings Park to Foxhill Bank and Union Road

**Walk 3: Intermediate**  
(involves some steps)



### Notice:



Friends of  
Rhyddings Park



LOTTERY FUNDED

**Distance:** 1.6 miles

**Time:** 30 - 40 minutes

**Suitable for Wheelchairs:** No

**Suitable for Pushchairs:** Yes

**Start and End:** All walks are circular, start wherever you want.

