

# Model 1060 D Watercraft Lift

1000 lb. 60" Beam each  
Watercraft Lift  
Assembly Instructions



**OTHER SMALL  
LIFT MODELS**







**Please read the entire instructions before starting assembly** (do not tighten any bolts until the lift is fully assembled)  
Note: each number refers to a picture number thru-out these instructions. (example: item 1. refers to picture 1.

1. Remove the packaging and lay out the three side panels, one has the winch mounted to the panel.  
The center side panel has a pulley mounted and has tabs welded on the bottom bolting holes (Detail D)  
If you desire the winch on the opposite side of the lift, rotate the winch 180 degree and move the side panel to the other side of the lift as shown in (Detail A)
2. There is 4 H-frames  
(Detail C) Bolt the H-frame to the side panel using a 3/8 x 3 1/2" cap screw, washer and nylon locknut.  
the H frame can be held in the upright position using the latch shown below (Detail F)  
(Detail D) Bolt the Center H frames to the side panel using a 3/8 x 5" cap screw 2 washers and nylon locknut.  
(Detail E) Bolt the H frame to the side panel using a 3/8 x 3 1/2 cap screw, washer and nylon locknut.



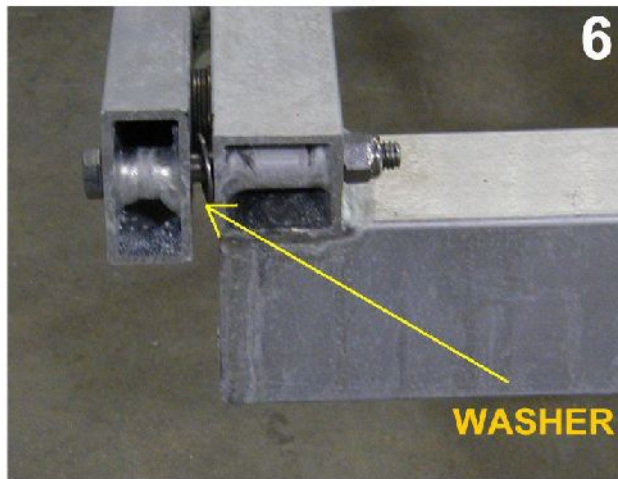




4. mount the 3rd & 4th H-frames to the water end of the lift. Use page 2 Details C,D&E for the bolting detail, the bolts are the same.

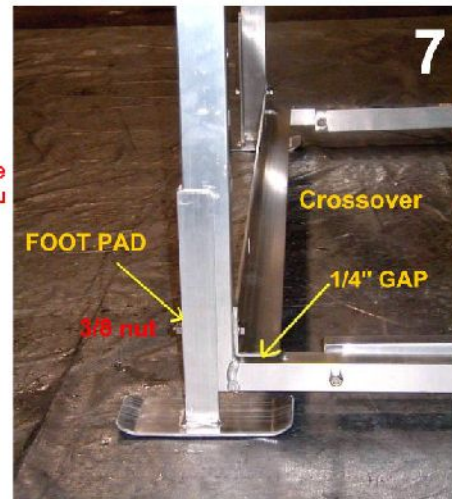


5. place the top frame at the un-bolted ends of the H-frame the 2" x 3" tube should be on the bottom when it is set in place

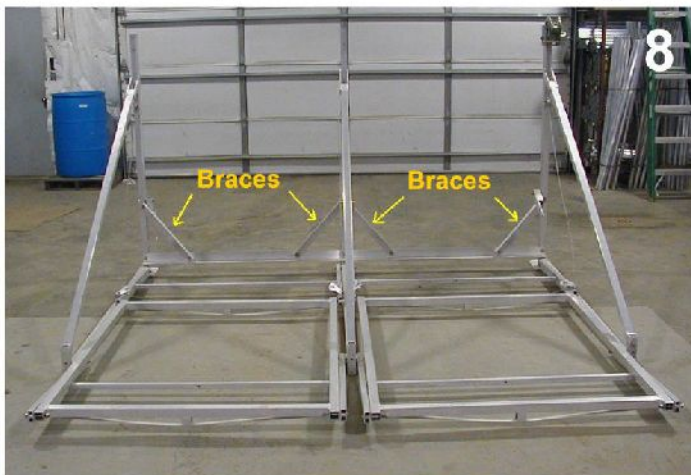


6. bolt the top frame to the H-frame ends using 4-3/8 x 3 1/2" cap screws washers and nylon locknuts Note the placement of the washer. When tightening the hinge areas snug the bolts and then (loosen 1/2 turn)

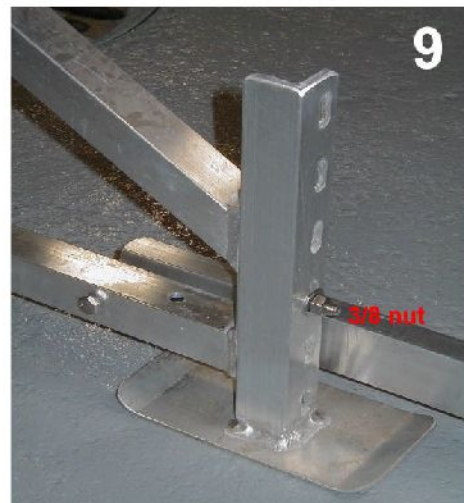
When Mounting the Foot Pads be sure to thread the mounting bolt from the inside of the Lift with the washer and nut on the outside this allows you adjust the foot pad with ease



7. Bolt the crossover to the side pannels using 3/8 x 3" carriage bolts mount the foot pad (shown in picture 7) use a 3/8" washer and nut on the foot pad side of the assembly. there will be a 1/4" gap under the crossover to allow room for the weld on the side pannel.

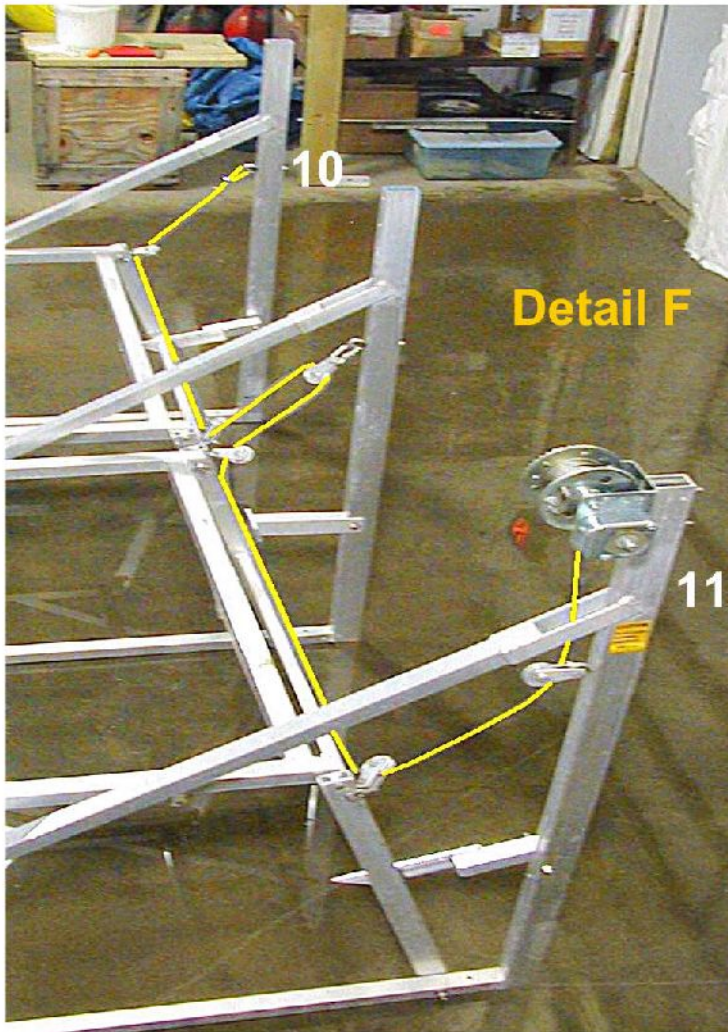


8. Mount the Braces (shown in picture 7) using 3/8 x 1 carriage bolts on the crossover and 3/8 x 3 cap screw on the upright, use a flat washer on the brace side of the assembly



9. Mount the foot pads on the rear of the lift using 3/8 x 2 1/2 cap screws use a washer and nut on the foot pad side of the assembly





10. un-coil the cable, wrap one end as shown thru the welded pulley tab mount the cable clamps and tighten them.

(Detail F) string the cable thru the 5 pulleys starting at the eye-bolt side (10) towards the winch (11)



12. mount the cable to the winch, follow the instructions included in the yellow winch instruction sheets.



13. mount the operators wheel follow the instructions included in the yellow winch instruction sheets.



14 & 15. The cradle hardware is all in one bag , mount the cradles to the top frame as shown Use a flat washer & lockwasher on the wood side install watercraft and position the cradles before raising the lift adjust to fit and then tighten the cradle hardware. Now tighten all the lift nuts and bolts. Do not over tighten the bolts (snug is good) they are easy to over tighten.

**(At the H frame hinge areas tighten the nylon locknuts and then back the locknuts off 1/2 turn)** PAGE 4 OF 4