

No. 133 - June / July 2025



# **THE POUNDSTOCK PACKET**

**KERNOW BYS VYKEN!**

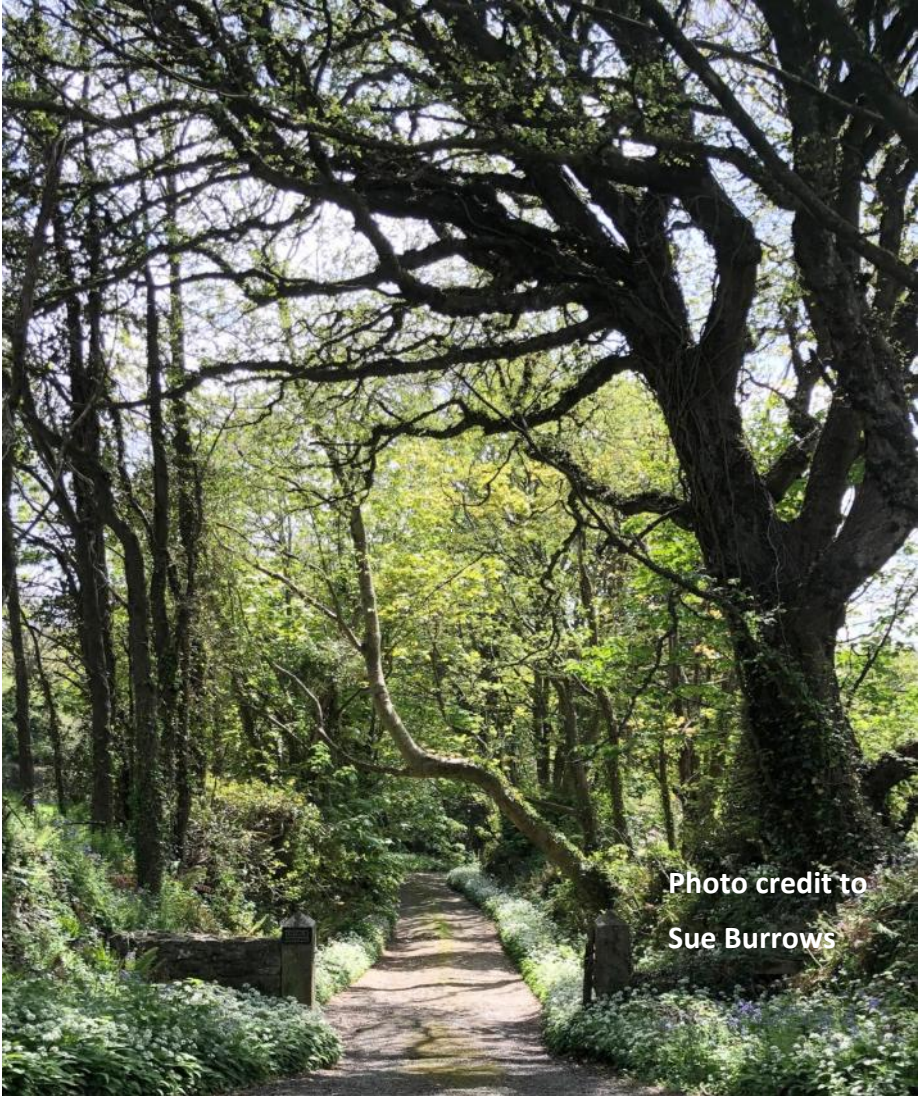


Photo credit to  
Sue Burrows

Distributed free to every household in Poundstock parish  
£1.00 to non residents Produced every two months

Contact us at [poundstockpacket@gmail.com](mailto:poundstockpacket@gmail.com)



# The Packet Needs You!

Contact [poundstockpacket@gmail.com](mailto:poundstockpacket@gmail.com)

Are you good with  
Microsoft Publisher?

Can you proofread?

Are you good with  
social media?

Do you like  
taking  
photographs?

We need young  
people to help  
with a new  
regular page

Do you have an  
event you'd like  
us to know about?

Can you write about ...

Local history

Favourite recipes

Surfing / sports

Local music

Wildlife and gardening

Local walks

Could you  
spare an  
hour to  
help us?

Are you good at  
turning basic  
information into  
a readable  
article?



## NOTES FROM THE EDITORS

What a wonderful spring we have had this year - apparently we are on target to have as many sunshine hours in May as we did the whole of last summer. It makes me appreciate what a wonderful part of the world we live in, and this time of year there are lots of fun and interesting activities going on. The plant sale at the Gildhouse was a great success - I am enjoying the lupins and geraniums that I bought there. It's good to see the Gildhouse has a regular pop-up pub on the last Friday of each month – with entertainment laid on.

Speaking of things going on locally – please let us know if you hear of any planned activities in Poundstock/Bude and locally, so we can include them in the next edition. And also send us your photos and a short blurb if you have attended something local – we are always looking for new contributions.

Jayne Griffiths and Tania Clegg  
[poundstockpacket@gmail.com](mailto:poundstockpacket@gmail.com)

## CONTRIBUTIONS

We always welcome input from our readers. If you want to send us an article, photographs or local information, contact us at [poundstockpacket@gmail.com](mailto:poundstockpacket@gmail.com).

**The absolute deadline for our next edition is 15th July 2025.**

We do not necessarily endorse the views expressed by individual contributors and while we do our best to make sure all information is accurate, we can't accept any responsibility for errors. We reserve the right to edit items submitted and decide on what is suitable for publication. If you wish to copy or reuse any of our content, please contact the editor.

## ADVERTISING AND DISTRIBUTION

Advertising in the Packet currently costs from £35 a year (six issues) depending on the size of ad you choose. This includes delivery direct to all the homes in the parish – currently over 550. For more information please contact Julie Pawley via [advertpoundstockpacket@gmail.com](mailto:advertpoundstockpacket@gmail.com). We do our best to deliver to everyone in the parish, but if you know of anyone who has been missed please let us know. For those who live elsewhere, copies are available at the Beach House and Wainhouse Country Stores, on our website ([poundstockpacket.org.uk](http://poundstockpacket.org.uk)) or by post; please contact us for details.

Printed by Parish Magazine Printing

Email: [philip.tucker@parishmagazineprinting.co.uk](mailto:philip.tucker@parishmagazineprinting.co.uk) tel: 01288 341617

Contact us at [poundstockpacket@gmail.com](mailto:poundstockpacket@gmail.com)

Free  
Local  
Delivery

CAMPINGAZ

FLO GAS



**A+E**  
FUEL SUPPLIES

**Bottled Gas + Logs**

Your Local Supplier  
for over 30 years



Call Us: 01288 356026  

# ARTHUR W. BRYANT FUNERAL SERVICE

CAMELFORD  
01840 214891

BUDE  
01288 352282

HOLSWORTHY  
01409 253000

LAUNCESTON  
01566 232426

**INDEPENDENT FAMILY  
FUNERAL SERVICE**

**MEMORIAL  
MASONRY**

**DIRECT CREMATION**

**PRE PAYMENT FUNERAL PLANS**

**OUR FAMILY CARING FOR YOUR  
FAMILY FOR OVER 50 YEARS**



AWBRYANT.CO.UK  
CARING@AWBRYANT.CO.UK



## GILDHOUSE PLANT SALE

The Poundstock Gildhouse hosted a plant sale on Saturday 17th May. There was an incredible display of plants for sale and a stall selling beautiful planters and bird houses.

The Gildhouse made over £225 at the plant sale which will go towards the upkeep of the historic Grade 1 listed building. This is very important as we have spent a 5 figure amount on re-decorating both the external walls and internals of the building. This redecoration was done using a new type of lime wash designed for old buildings and should last much longer than the traditional lime wash.



The church also made over £200 on their table from the generous plant donations.

A big thank you to all the volunteers and people who made donations, which helped create a brilliant atmosphere in the weekend sunshine.

Both stall holders and buyers went home very happy.

**Written by Alan Green**

## GILDHOUSE BEEKEEPING TALK

The Gildhouse hosted a talk about bees and beekeeping on Wednesday 14th May.

It was a really interesting and informative talk, the speakers were local bee keepers Andree and Steve Carter who have been keeping bees for 6 years. Andree is Education Manager for Bude Beekeepers and Steve is the Treasurer.

They talked about honey bees, how they live, gather nectar and make honey. Everyone then had the opportunity to taste honey.



# CHURCHES AND SERVICES FOR JUNE AND JULY 2025

Please check your current church times in “Voices Together” as subject to change

JUNE				JULY			
1 Sunday	09.30 10.00 18.00	HC All EP	BH WSM M	2 Wed'day	08.30 10.00	MP HC	Zoom WB
4 Wed'day	08.30 10.00	MP HC	Zoom BH	6 Sunday	09.30 10.00 18.00	HC All EP	BH WSM M
8 Sunday	09.30 09.30 11.15 18.00	HC MP HC EP	M P W WSM	9 Wed'day	08.30 10.00	MP HC	Zoom BH
11 Wed'day	08.30 10.00	MP HC	Zoom WB	13 Sunday	09.30 09.30 11.15 18.00	HC MP HC EP	M P W WSM
15 Sunday	09.30 09.30 11.15	HC MP HC	BH M WSM	16 Wed'day	08.30 10.00	MP HC	Zoom BH
18 Wed'day	08.30 10.00	MP HC	Zoom BH	20 Sunday	09.30 09.30 11.15	HC MP HC	BH M WSM
22 Sunday	09.30 09.30 09.30 10.00 11.15	HC HC MP MP HC	M P W WSM BH	23 Wed'day	08.30 10.00	MP HC	Zoom BH
25 Wed'day	08.30 10.00	MP HC	Zoom WB	27 Sunday	09.30 09.30 09.30 10.00 11.15	HC HC MP MP HC	M P W WSM BH
29 Sunday	10.30	Benefice	WB	30 Wed'day	08.30 10.00	MP HC	Zoom WB

Bude Haven	BH	<b>Everyone is invited to coffee at the Gildhouse after Poundstock Services.</b>	
Marhamchurch	M		
Poundstock	P	Central Methodist Church	10.30
Week St Mary	WSM	Marhamchurch Chapel	10.30
Whitstone	W	Week St Mary Chapel	11.00
Widemouth Bay	WB	<b>Coast Family Church</b> non-denominational - Jacobstow Hall – 1 <sup>st</sup> , 3 <sup>rd</sup> & 5 <sup>th</sup> Sunday	

## FROM THE RECTORY

A son took his father out for an evening dinner. His father being old and weak, while eating, dropped food on his shirt and trousers. Other diners watched him in disgust while his son was calm. After he finished eating, his son, who was not at all embarrassed, quietly took him to the washroom, wiped the food particles removed the stains, combed his hair and fitted his spectacles firmly.

When they came out, the entire restaurant was watching them in dead silence, not able to grasp how someone could embarrass themselves publicly like that. The son settled the bill and started walking out with his father. At that time an old man amongst the diners called out to the son and asked him, "Don't you think you have left something behind?"

The son replied, "No Sir, I haven't. "

The older man retorted, "Yes you have, you left a lesson for every son and hope for every father." The restaurant went silent. The old man continued, "To care for those who once cared for us is one of the highest honours. We all know how our parents cared for us for every little thing. Love them, respect them, and care for them.

The Bible says, Honour your Father and Mother.... *Exodus chapter 20 verse 12*. Otherwise, what example are you setting for your children?

**Written by Reverend David Saunders**

## BUDE BANKING HUB

Bude Banking Hub has opened in its temporary home at the Parkhouse Centre, EX23 8LD to serve your banking needs while plans for the permanent hub progress.

Open weekdays from 9am-5pm, the hub offers basic banking and cash services, whenever it's open and whoever you bank with.

It also provides the convenience of a community banker service, where you can discuss more complex banking matters with your own bank, on the day your bank is in the hub.

Check the schedule to know which bank is in each day:  
<https://www.cashaccess.co.uk/hubs/bude-cornwall/>



# R & N FUELS

(Nicholls Bros)

## COAL MERCHANTS

DON'T BE LEFT IN THE  
COLD!

LOCAL DELIVERIES, ALL  
SOLID FUELS

COMPETITIVE PRICES

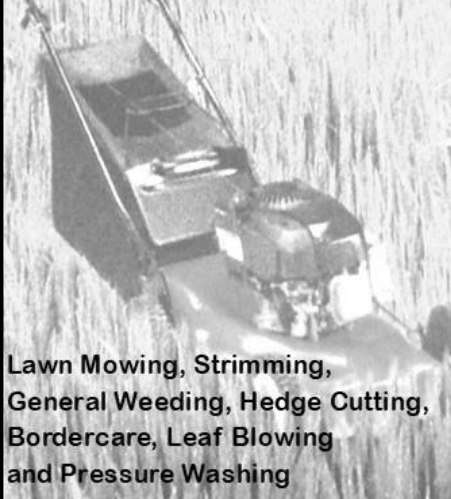
**01840 230111 (Colin)**

## TD GARDEN SERVICES

Tom Willoughby

07757024820

td.gardenservice@outlook.com



Lawn Mowing, Strimming,  
General Weeding, Hedge Cutting,  
Bordercare, Leaf Blowing  
and Pressure Washing

## WAINHOUSE COUNTRY STORE POST OFFICE

(The Post Office also has Banking  
Services, including Foreign Currency Facilities)  
Euros available over the counter at the Post Office

### & OFF-LICENCE

**ST GENNYS 230 554**

Local cheese and cream, bacon,  
frozen foods, fruit and vegetables

Barnecutts pasties freshly baked

Newspapers & Magazines

National Lottery

We are now agents for dry cleaning

**OPEN**

**Monday to Saturday 7 am–7 pm**

**Sunday 7 am–6 pm**

**With friendly and helpful staff**



A spiritual haven on the Cornish  
Coast



**Bibles - Books  
Cards - Gifts**



*Join us for a cuppa and a chat  
10-4 Mon to Fri -- 10-12.30 Sat*

4, Lansdowne  
Mews, Bude.  
EX23 8BH  
t. 01288 356886



**Email: arkangelbude@gmail.com**

Reg. Charity. 294313



## THE POUNDSTOCK GILDHOUSE

Poundstock Gildhouse presented a Pop Up Pub on Friday 25th April, and the Bencoolen Wreckers were their guest band.

Everyone had an excellent evening which included pasties and a sing song.

Originally established in 2011, the Bencoolen Wreckers Singers were re-launched in October 2018, and enjoy the tradition of a capella shanty singing of songs from Cornwall and around the world.



### Poundstock Gildhouse - What's on in June and July

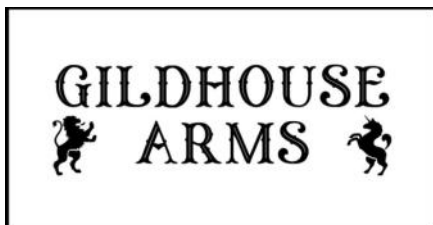
**Wednesday 11th June 7.30 - 11.00.** Your gardens and gardening questions / problems. £4.00 per person to include tea / coffee and biscuits. There will be a raffle.

**Friday 27th June 7.30 - 11.00.** Pop up Pub.

**Wednesday 9th July 7.30 - 10.00** The History of John Deere Tractors, with Bert. £4.00 per person to include tea / coffee and biscuits. There will be a raffle.

**Sunday 13th July - The Commotion Time** play read through with Sarah Dickenson and some of the original cast.....time and entry fee to be confirmed. Contact 07428161323 for more details.

**Friday 25th July 7.30 - 11.00** Pop up Pub with music



# CBL STOVES

The Showroom, Unit 5  
Red Post, Bude, Cornwall  
EX23 9NW

01288 381852  
carl@cblstoves.co.uk  
www.cblstoves.co.uk



Registered  
Heating  
Business



- Stainless Steel twinwall flues
- Chimney Lining
- Iskoern Pumice lining
- Fireplace alterations
- Stove Installations
- Wood, Multifuel, Gas & Electric Traditional & Contemporary Stoves & Fires
- Chimney Rebuilds
- Slate, Granite & Glass Hearths
- Wood & Ceramic beams & surrounds
- Floating Shelves



Hand made items  
For sale at our workshop and  
on line

Classes in Throwing and  
pottery painting  
Book on our website or phone

  
PARSONS  
POTTERY

**NEWS-** Two day  
Throwing Courses  
£240  
12th-13th June  
3rd-4th July

The Old Garage  
Quinceborough Farm,  
Leverlake Road,  
Widemouth Bay  
Cornwall EX23 0NA

Phone or text: 07967044298

Email: jar@parsonspottery.co.uk

www.parsonspottery.co.uk



Parsons Pottery



parsons\_pottery



## DEANERY CONFIRMATIONS 27TH MARCH

Week St Mary Church was the venue for a visit from Bishop Hugh Nelson, to confirm eight candidates from Stratton Deanery, two of whom were also baptised.

Those confirmed were Anthony, Sharon, Ruth, Katrina, Tracey, Paul, and Claire from Bude and Kilkhampton and Pamela from Week St Mary.

Anthony and Pamela were baptised at the start of the service.

All who attended enjoyed a Bring and Share supper and fellowship after the service.

Photos show Pamela with Bishop Hugh and all the candidates as they proudly carry their candles as a symbol of their new life.



## BOOK REVIEW

This book had me gripped from the start. It was well written, descriptive and it 'painted' a picture as it took me through the decades of war torn Vietnam.

A granddaughter takes us on her family history tour, and we find out how the various occupations each eroded a little more of people's rights, culture and spirit. Despite that, it gives an insight into the beautiful aspects of family life over the years and the extremes that parents will go to, to protect their children; the deep love of a Grandma for her granddaughter and ultimately the debt of gratitude we owe to those who went before us to leave a kinder, safer world.

Poignant, sad, funny at times and one that will stay with me for a long time. Its also made me want to visit the country so watch this space !

**Written by Anne Marsh**

Contact us at [poundstockpacket@gmail.com](mailto:poundstockpacket@gmail.com)



# WEDDING FEASTS AT THE GILDHOUSE

I was thinking about Poundstock Gildhouse whilst looking at some mediaeval cookery books and was wondering about all the many wedding feasts held there over time. They would have been important for the whole manor, tenants, retainers and family and were amazingly elaborate meals. Nowadays, there are usually no more than three courses and an elaborate cake, which is descended from the 'Soltetee' of mediaeval feasts. There were many ways of spelling soltety and I think the correct word now is 'subtlety'.

Soltetees at the really big events were elaborate concoctions made from sugar and wax, adorned with feathers, scales and the like, and often opened to disclose a 'fair maiden with congratulations' and at smaller feasts were made from real pastry and sugar and after being paraded and duly admired or the joke shared, could be broken up and eaten. I wonder if the bride and groom figurines we had on our wedding cakes come from this time?

There was also the 'Top table' where the Lord and his wife sat, along with esteemed guests and a rigid seating pattern, where the higher you were in the Lord's regard so the closer to him you sat, those at the bottom of the table were the serfs, workers and the like. They would have the bread trenchers from the top table after they had been used as plates - and the gravy soaked into them. There were rules as to how you behaved at table and it's interesting to see how many we adhere to today;

Don't bite your bread [as the bread trenchers were later handed to the lower tables or the poor] which is why we always tear our bread at table I guess. Don't bite off more than you can chew and don't talk with your mouth full. Eat quietly, without noise and don't blow to cool food. Do not leave your spoon in the dish or cup and do not wipe knives on the cloth. Don't eat with your knife, nor drink with your mouth full. Wipe your mouth on your napkin before and after drinking. Don't let your pet dog be a pest and wipe your nose privately. Do not lean your elbows on the table nor put fingers into your drink and finally, 'Nor telle thou never at borde no tale To harm or shame thy fellow in hall.' [Nor tell any tale to make anyone uncomfortable].

Did you recognise any from when you were growing up? I certainly did!

**Written by  
The Sheepish Farmer**





# JACOBSTOW GUIDING NEWS



Due to this amazing Spring, the Rainbows, Brownies and Guides have carried out the threat we made last edition and have been out and about in Jacobstow and its environs this term.

Our focus has been in discovering our world, and working out how we can save it - The girls feel very strongly about the environment, know lots of ways we can all help, and have been learning different ways to spread the word and embed the message, with art, science and lots of games.

The rainbows have been exploring the area around the Hall, looking for things that begin with (or contain!) every letter of the alphabet -the ingenuity in finding an X and Z was very impressive!

Brownies have been affected by Bank holidays, so they have focused on coping with the hot weather making lemonade and summer craft, whilst planning a full programme next half term which includes a BBQ, Sports day and a Yoga night!

Guides have also focused on the outdoors, and with Summer camp looming, preparations for that are afoot. We met with the local Camelford Guide unit who will be camping with us in the summer, enjoying a night exploring Camelford by a Penny hike (toss a coin at the junction, and heads turn left, tails turn right) and we all ended up with chips eaten in the bandstand. The event occurred during the recent Camelford road closure, a nuisance for motorists, but we really enjoyed the safety as we crossed and recrossed the A39 safely all night! We next meet up with this group in June, to play "tent beetle" (think beetle drive but with large sponge dice and tent components rather than drawing beetles!) It should be a very silly evening!

All three units are planning lots of outdoor adventures next term, including beach hikes, outdoor cooking, water slides, beach BBQ, and paddle boarding in Bude.

If you know a girl aged between 4 and 14, who would like to join in the fun, please go to Girlguiding UK/Get involved/Find your nearest unit and register your daughter.

We have girls from 9 local schools within our 3 units, so I'm sure there will be a friend there for her.



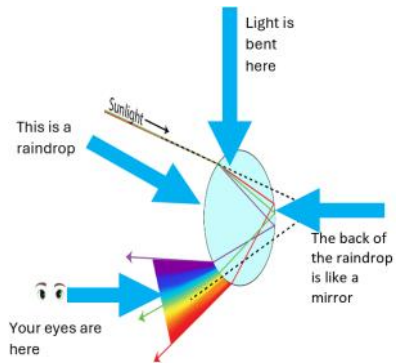
## RAINBOWS—PART 3

This is Part 3 of 3 about rainbows: it is all about the science behind them. *PLEASE* don't switch off if you were no good at science; I failed my Chemistry and Physics O Levels but I love anything scientific.

Rainbows are all about light. Sunlight is actually called white light and is made up of 7 colours **red orange yellow green blue indigo and violet**.

If you mix up all the colours, you get white light. And if you water your garden with a fine spray with the sun behind you, you will see a rainbow in the spray. The drops of water have broken up the sunlight into its colours.

The tricky bit is understanding how the drops of water do this magic trick.



Look at the picture above, then think of a rainbow in the sky over the sea at Millook or Widemouth. A shower of rain has to be in front of you, and the sun must be behind you. The coloured light that reaches your eyes comes from behind you and hits the falling raindrops. The red light comes from raindrops higher in the sky, while the blue light comes from drops that are lower. The billions of raindrops, of course, are falling, so that each is quickly replaced by a raindrop from above, creating the illusion of a stationary rainbow caught in a falling curtain of rain.

I hope you've enjoyed reading this, meanwhile, consider my mum's face when I was a little boy: after we had seen an oil spill in the road. I looked up at her and said, "Mum, there's a dead rainbow"

**Written by Christopher Asbury**

## HAPPY BELATED BIRTHDAY HILDA WALTER!

In April, Hilda celebrated her 100th birthday. When asked how she managed to get to this age she gave us a few tips:

- Keep moving
- Use the trials of life as a ladder to God
- Jesus is with us even if we do not realise it
- Dying is going home



## **YOUR LOCAL INSURANCE BROKER**

**Offering A Whole Range Of Products  
Including Business, Motor, Home,  
Liability, Travel & More!**



**CALL US TODAY - 01288 353999**

Chapter House, Burn View, Bude (by Coop)

[www.hodgsoninsurance.co.uk](http://www.hodgsoninsurance.co.uk)

[www.guesthouseinsurance.co.uk](http://www.guesthouseinsurance.co.uk)

**We Search The Market So You  
Don't Have To!**



### **QUINCEBOROUGH FARM SELF-CATERING COTTAGES**

**PAT & ALASTAIR ROWLAND  
WIDEMOUTH BAY BUDE  
CORNWALL EX23 0NA**

**01288 361236**

**WINTER LETS CAN BE ARRANGED**

### **TRENCREEK FARM HOUSE Tel 01840 230219**

Traditional farmhouse food for  
traditional value

All food freshly prepared, home  
cooked and served in an informal,  
relaxed and unhurried atmosphere.

Bookings are essential with 24hrs  
notice please

**Richard and Margaret Heard**

[trencreekfarmhouse@outlook.com](mailto:trencreekfarmhouse@outlook.com)  
EX23 0AY

### **JUBILEE CLUB**

The Jubilee Club have organised a  
Coach Trip

### **SIDMOUTH/DONKEY SANCTUARY**

On MONDAY 23<sup>RD</sup> JUNE

You are very welcome to join us

Pick up at Wainhouse

Please contact Diana 01840 261366  
for more details.



# **R J SARGENT & SON**

**INDEPENDENT FUNERAL  
DIRECTORS**

**PRIVATE CHAPEL OF REST  
MEMORIALS SUPPLIED  
FAMILY BUSINESS EST. 1973**

**Tel. Terry Sargent  
01288 361468  
Trewithian, Poundstock  
Bude EX23 0DS**



**PLASTERING - RENDERING - DRY LINING**

**07761 735022**

**[brplasteringsw@gmail.com](mailto:brplasteringsw@gmail.com)**



# THE WYLDDES PROGRAMME FOR SUMMER 2025

Who would have thought in a quiet field in North Cornwall, down a winding country lane, we would find a music venue that attracts international performers and can accommodate 10,000 festival-goers?

The Wyldes has grown in size and popularity since the first party in the field known as Leopalooza back in 2006. Since then they have hosted major artists including Paloma Faith; McFly; Paul Weller and Fatboy Slim. In 2024 I was lucky enough to see Simple Minds – Jim Kerr gave a fantastic performance. This year The Wyldes have scaled down the size of the events to allow the venue to recover, but they are promising it will scale up again in 2026.

So 2025 might be just the opportunity to enjoy an intimate music experience in the wonderful Cornish countryside. This summer's events are:

7 June – Hot Tropics – Sold Out

21 June – Solstice Gathering – Sold Out

2 August – Crash The Stage – Tickets available

9 August – Pop Summer Party – Tickets available

16 August – Freedom Sounds – Tickets available

6 September – Digital Disco – Tickets available



For more information

[www.thewyldescornwall.com](http://www.thewyldescornwall.com)

Written by Jayne Griffiths

## Breakfast & After School Care



### ST MARK'S PRIMARY MORWENSTOW

From April 2025 we are delighted to be able to offer our families before and after school care for **school aged children**

#### Activities:

- Sports
- Stories & Music
- Arts & Crafts
- Team Games
- Mindfulness

#### Costs:

**20% discount for  
siblings**

**Breakfast Care** from 7.30 a.m.  
£3.50 to include toast, cereal, milk

**After School Care**  
3.15-4.45 £7.50 3.15-5.30 £9.00  
to include snacks and drinks

[stmarks@lapsw.org](http://stmarks@lapsw.org)

Booking – one week in advance  
on MCAS app



## St Gennys Silver Band

Are seeking new players,  
experienced or otherwise.

We have instruments to loan,  
and free tuition.

We meet on at 7pm Wednesday night  
at The Legion Hall, St Gennys.

We're a small friendly band,  
that play in a beautiful village!  
Just come along or contact

Heather 07794390807

Contact us at [poundstockpacket@gmail.com](mailto:poundstockpacket@gmail.com)



## **CORNISH COASTS**

**ONE FREE TEA OR COFFEE  
WITH THIS ADVERT**

**ONE DRINK PER ADVERT  
EXPIRES 30<sup>TH</sup> JUNE 2025**



**WWW.CORNISHCOASTS.CO.UK  
MIDDLE PENLEAN, POUNDSTOCK,  
EX23 0EE**

## **West Country Carpets**

**1 – 2 Pethericks Mill Ind. Est.  
(Opp. Rugby Club)**

**40 YEARS + SUPPLYING QUALITY  
DOMESTIC AND CONTRACT  
FLOOR COVERINGS**

**Call Jeremy on 01288 352912  
info@westcountrycarpets.co.uk**

**REMNANT WAREHOUSE  
01288 355320**

**CARPETS AND VINYL  
ROLL-ENDS FACTORY  
CLEARANCE  
MANY AT HALF-PRICE OR LESS**



**DENISE WELLINGTON**  
FUNERAL SERVICES

**COMPASSIONATE, CARING,  
TRUSTED & PROFESSIONAL**

**Memorials | Pre-Paid Funeral Plans**

**24 Hour Contact 01288 359277**



**Dementia  
Friends**  
An Alzheimer's Society initiative

**Golden Charter**  
Smart Planning for Later Life



**denisewellingtonfunerals.co.uk  
enquiries@denisewellingtonfunerals.co.uk**

## LOCAL CONTACTS

NHS non-emergency helpline	111
Stratton Hospital Minor Injuries Unit	01288 287700
(Hours vary according to staff availability. Please phone before attending.)	
Doctors' surgeries: Neetside	01288 270580
Stratton	01288 352133
Boscastle	01840 250209
MP: Ben Maguire	ben.maguire.mp@parliament.uk
Parish council chair: Stephen Blake	- stephen.blake@poundstock-pc.gov.uk
Parish clerk: Lynn Pluess	0776 8100 560
Cornwall Councillor: Nicky Chopak	0781 030 2061
Cornwall Council	0300 1234 100
Bude Library	0300 1234 111
Library renewal line	0845 607 6119
Recycling centre/tip (Tiscott Wood)	0845 630 0300
Samaritans	116 123
National Childline	0800 1111
Police – non-emergency	101
Farming Community Network	0845 367 9990
Bude Food Bank	01288 448748
Citizens Advice	03 444 111 444
(Phone advice line, operates 10–4, Monday–Friday)	
CCS helpline/Age UK Cornwall	01872 266383
Floodline	0845 988 1188
National Grid (power cuts)	0800 678 3105
Poundstock Church (Barry Smith)	01288 361716
Marhamchurch WI: Shirley Youldon	01288 354672
Poundstock Skittles: Pam Gilhespy	01288 361570
Poundstock Ringers	01288 488758
Juliottter Garden Club	01566 781559
or 01840 261237	
Rebel Cinema	01288 361442

# LOCAL ORGANISATIONS

## LIBRARIES

Bude Library is currently open 10.00–5.00 Mondays, Wednesdays and Fridays, 10.00–1.00 Saturdays. Reserve books by phone (0300 1234 1111) or online at [www.budelibrary.co.uk](http://www.budelibrary.co.uk)

Poundstock's two pop-up libraries, in St Winwaloe's and Our Lady and St Anne's, are available when the churches are open (all day, every day). A wide choice of books can be borrowed or bought, with all proceeds going to charity.

## POUNDSTOCK POST OFFICE

Still based in the old shop at Cornish Coasts Caravan and Camping Park on the A39. Open Mondays and Thursdays, 9.00–1.00 (ask at the main shop).

**THE FOLLOWING ARE ACCURATE TO THE BEST OF OUR KNOWLEDGE, BUT CHECK BEFORE YOU GO (CONTACT DETAILS BELOW).**

## SCOUTS AND GUIDES

Cubs: Monday 6.30–8.00 pm (01288 352786)

Scouts: Tuesday 6.30–8.00 pm (07842 084971)

Beavers: Wednesday 6.00–8.00 pm (07855 001284)

Rainbows (Tuesday 17.45) and Guides (Monday 19.00): ring Mary on 01840 230006. Brownies (Monday 17.45): ring Louise on 07817 985661.

## MARHAMCHURCH WI

Marhamchurch Methodist Hall, 7.30 pm, second Tuesday of the month (note change of time to afternoon).

## JULIOTTER GARDEN CLUB

Otterham and St Juliot Hall, 7.30 pm, fourth Tuesday of the month.

## BUDE BRIDGE CLUB

Tuesday and Friday evenings, Wednesday afternoons, in the Parkhouse Centre. Details from [www.bridgewebs.com/Bude](http://www.bridgewebs.com/Bude) or ring 01237 471111.

## POUNDSTOCK GILDHOUSE

You can hire the Gildhouse for events from meetings to parties and wedding. Call 01288 341537 or visit [www.poundstockgildhouse.co.uk](http://www.poundstockgildhouse.co.uk).

## REGULAR EVENTS

WI Week St Mary 19.15 2<sup>nd</sup> Thursday Monthly

Camelford Garden Club 14.30-16.30 1<sup>st</sup> Wednesday Monthly Library



# DIARY DATES

**For events at the Poundstock Gildhouse, see page 9.**

## JUNE

- 1<sup>st</sup> 2<sup>nd</sup> Meeting of North Cornwall Motor Racing Club Netherbridge
- 4<sup>th</sup> Marcus Brigstocke at Launceston Town Hall 19.30
- 5<sup>th</sup> -7<sup>th</sup> Royal Cornwall - Wadebridge
- 8<sup>th</sup> Open Farm Sunday various “[www.farmsunday.org](http://www.farmsunday.org)” for information
- 7<sup>th</sup> Fford-Live Punk, Funk & Soul-Week St Mary-19.30
- 12<sup>th</sup> Macbeth—Castle Lawn—18.30
- 13<sup>th</sup> Moulin Bouge, The Plough Arts Centre Potato themed Cabaret
- 14<sup>th</sup> Stratton Hospital Fete 14.00
- 14<sup>th</sup> Party on the Pitch, Camelford
- 14<sup>th</sup> Talfest 2025-Bay View Inn-Live Music all day
- 21<sup>st</sup> This is Floyd-Parkhouse Centre-19.30
- 21<sup>st</sup> Cornwall Youth Choir, Tintagel Methodist –18.00
- 22<sup>nd</sup> An afternoon with Will Keating-Cobweb—16.00
- 26<sup>th</sup> Beatles Complete-Ebbingford Manor-19.00
- 27<sup>th</sup> Fearlessly Taylor-Parkhouse Centre-19.30
- 28-29<sup>th</sup> Holsworthy Vintage & Classic Rally

## JULY

- 5<sup>th</sup> Pagan & Spiritual Fair, Parkhouse Centre 11.00—16.00
- 5<sup>th</sup> Lydford Summer Fair - 11.00
- 12<sup>th</sup> Liskeard Show
- 25<sup>th</sup> Bowie PR-Ebbingford Manor-19.00
- 28<sup>th</sup> Woolsery Show
- 31<sup>st</sup> Launceston Show

# POUNDSTOCK PARISH COUNCIL

**[www.poundstock-pc.gov.uk](http://www.poundstock-pc.gov.uk)**

<i>Chairman</i>	Stephen Blake	<a href="mailto:stephen.blake@poundstock-pc.gov.uk">stephen.blake@poundstock-pc.gov.uk</a>
<i>Vice-chair</i>	Michelle Carter	<a href="mailto:michelle.carter@poundstock-pc.gov.uk">michelle.carter@poundstock-pc.gov.uk</a>
<i>Councillors</i>	Max Faulkner	<a href="mailto:max.faulkner@poundstock-pc.gov.uk">max.faulkner@poundstock-pc.gov.uk</a>
	Steve Haynes	<a href="mailto:steve.haynes@poundstock-pc.gov.uk">steve.haynes@poundstock-pc.gov.uk</a>
	Eric Harris	<a href="mailto:eric.harris@poundstock-pc.gov.uk">eric.harris@poundstock-pc.gov.uk</a>
	Pamela Idelson	<a href="mailto:pamela.idelson@poundstock-pc.gov.uk">pamela.idelson@poundstock-pc.gov.uk</a>
	Tom O'Sullivan	<a href="mailto:tom.osullivan@poundstock-pc.gov.uk">tom.osullivan@poundstock-pc.gov.uk</a>
	Graeme Swatton	<a href="mailto:graeme.swatton@poundstock-pc.gov.uk">graeme.swatton@poundstock-pc.gov.uk</a>
<i>Parish clerk</i>	Lynn Pluess	<a href="mailto:clerk@poundstock-pc.gov.uk">clerk@poundstock-pc.gov.uk</a> 07768 100 560

For details of how to apply to be co-opted to the Parish Council, please see the website or contact the Clerk

The parish council website carries agendas, full minutes and other documents, as well as information about the Neighbourhood Development Plan and the parish cemetery. At present, council meetings take place at 7 pm on first and third Wednesday of each month at The Beach House, Widemouth.



## **Poundstock Neighbourhood Plan Committee**

Chairman: Matthew Blows

Secretary: Lyn Smith

Members: Sara Beckett, Councillor Stephen Blake, Barry Rogers, Phyllis Ward, Rachel Roberts, Councillor Michelle Carter, Councillor Steve Haynes and Councillor John Worth.

Contact: email: [ndp-sg@poundstock-pc.gov.uk](mailto:ndp-sg@poundstock-pc.gov.uk) or by post to:  
St Marwenne, Combe Lane, Widemouth Bay, EX23 0AA

Beavers, Cubs & Scouts are now taking part in the summer term's programme, many weekly evenings being completed outside, making the most of the weather and light evenings.

Beaver evenings include a nature walk, pond dipping, beach visit and cooking on a fire.

Cub evenings include athletics, fire lighting, building a shelter, and the term is concluded with a slip & slide and river run at Trengune along with the Scouts.

Scouts will bring their bikes to the Scout hut for an assault course, other activities include fire lighting/outdoor cooking, raft building and then trying the rafts out on the river.

All 3 groups are taking part in a sponsored bike ride in July raising funds for the Scouting groups and the hut.

4 Scouts took part in the annual 'coast 2 coast' during a weekend in April. The Scouts set up camp at Sticker in the rain which continued during the night. An early start was had as the Scouts were bussed to Perranporth where they walked 20 miles back to camp. The final day's walk was from Sticker to Mevagissey, another 11 miles. A massive achievement for our Scouts.

The next big adventure in July for 11 of our Scouts is a Scouting Jamboree, a week-long camp at St Stithians. The week will be jam packed with activities, a wonderful opportunity for our Scouts meeting Scouts from all over the country.

We will always welcome new members –

Cubs – Mondays 6.30 – 8pm

Scouts – Tuesdays 6.30 – 8pm

Beavers – Wednesdays 5.30 – 6.30pm

For further details please contact  
Robert Medland 07842084971  
robert.medland1988@gmail.com

Thank You

**Jill.**



*Wild Tribe Events Presents...*

# Pagan & Spiritual Fair

Ivor Potter Hall  
@The Parkhouse  
Centre  
Bude  
EX23 8LD

5th July  
11am - 4pm  
Free Entry

## Made to Measure Blinds and Curtains

Competitive prices and fitting included.

Choose from a full range of Hillarys' fabrics  
and a large variety of styles, including  
Venetian, Roman and Verticals.

Contact David Fawcett to arrange a home visit:

07925539357

[david.fawcett08@gmail.com](mailto:david.fawcett08@gmail.com)

Or find me on Facebook at David Fawcett.

## *Tintagel Skip Hire Ltd* Waste Management

Trebarwith Road, Delabole PL33 9DE

Telephone: 01840 770 449

- ❖ Skip Hire
- ❖ Wheelie Bin Hire
- ❖ Waste Management
- ❖ Waste Collection Service
- ❖ Cardboard And Glass Collections
- ❖ Grab Hire

# PAUL FINN solicitors

*Always available  
for you.*

*Always ready  
to help.*

Our clients  
consistently rate  
our services as  
"excellent" - come  
and see why.

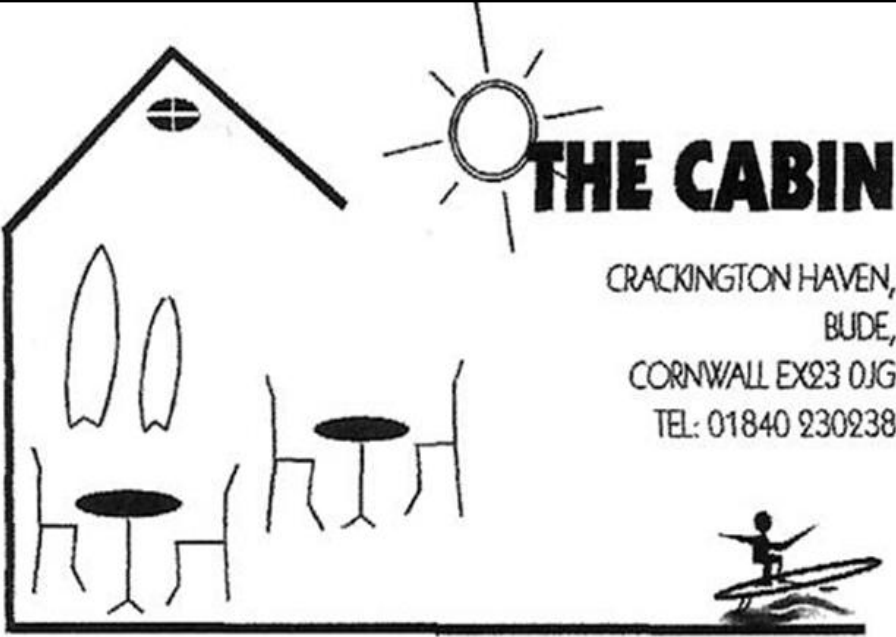
**Bude: 01288 356 256**

The Strand Bude Cornwall EX23 8SY  
[www.FinnLaw.co.uk](http://www.FinnLaw.co.uk)

**Holsworthy: 01409 255 446**

20 The Square Holsworthy Devon EX22 6AN  
[Enquiry@FinnLaw.co.uk](mailto:Enquiry@FinnLaw.co.uk)





# THE CABIN

CRACKINGTON HAVEN,  
BUDE,  
CORNWALL EX23 0JG  
TEL: 01840 230238

BEACH CAFÉ & SURF EQUIPMENT-HIRE & SALES



## BRIGHT JOINERY

Fine carpentry  
Architectural joinery  
Bespoke furniture

**07813 545 774**

info@brightjoinery.co.uk  
www.brightjoinery.co.uk

Bude, Cornwall

The 93rd

St. Gennys Horticultural Show

25th July 2025



Save the date and get planting,  
stitching, knitting, baking and  
crafting for your entry to the show.

Schedules will be out next month.

- FULL ARCHITECTURAL SERVICES
- SITE APPRAISALS
- PLANNING PERMISSIONS
- BUILDING REGULATIONS



PIPER  
ARCHITECTURE

01409 253 363

[info@piperarchitecture.co.uk](mailto:info@piperarchitecture.co.uk)

[www.piperarchitecture.co.uk](http://www.piperarchitecture.co.uk)



# O&R



## Quality potatoes

Tired of lugging heavy potatoes home from the shops?  
Why not have them delivered to your door - hassle free.

2.5kg up to 25kg bags available.

Guaranteed regular, reliable service

Email :[healqualitypotatoes@gmail.com](mailto:healqualitypotatoes@gmail.com)

Phone Olly 07876 708617 Roxy 07377324550  
or find us on facebook





**BUDE EYE CENTRE**  
QUALITY . VALUE . COURTESY . SERVICE

## **YOUR MODERN INDEPENDENT OPTOMETRIC PRACTICE**

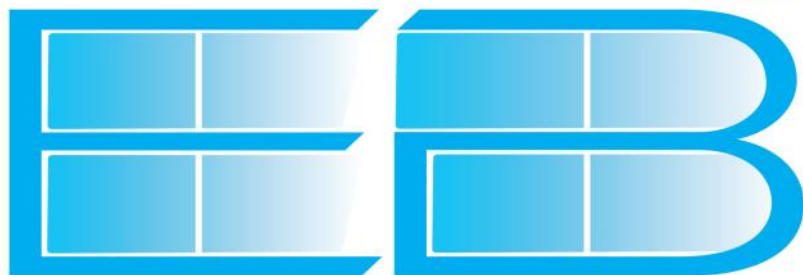
Bude Eye Centre, established in 2005, are equipped with up to date equipment, a wide selection of eyewear and latest contact lenses to suit individual needs. We offer same day service and also hearing aid services.



### **WE OFFER:**

- ✓ NHS & Private Eye examinations
- ✓ Contact lens specialist
- ✓ 3D OCT Screening available
- ✓ Free children's eye care
- ✓ Regular hearing service, including free assessments
- ✓ Honest and expert advice on frame selection
- ✓ Wheelchair friendly practice

Bude Eye Centre, 7 Queen Street, Bude, Cornwall EX23 8AY  
01288 350041 · [info@budeeyecentre.co.uk](mailto:info@budeeyecentre.co.uk) · [budeeyecentre.co.uk](http://budeeyecentre.co.uk)



## **WINDOW CLEANING**

**PURIFIED WATER FED POLE SYSTEM**

**Ed Bragg - North Cornwall**

**[e.bragg@hotmail.co.uk](mailto:e.bragg@hotmail.co.uk)    07535 938140**

## THE NIGHT SKY IN JULY

Mars will be setting about 2230, while Saturn will be rising in the East about 0020, followed by Venus at 0400.

As I have already mentioned, if we want to find a planet possibly containing life as we know it, it has to have water.

Researchers confirmed the presence of crystalline water ice, in a dusty debris disk that orbits a Sun-like star 155 light-years away, using detailed data from NASA's James Webb Space Telescope. Water ice is a vital ingredient in disks around young stars — it heavily influences the formation of giant planets, and may also be delivered by small bodies like comets and asteroids, to fully formed rocky planets like Earth. Now that researchers have detected water ice with Webb, they have opened the door for all researchers to study how these processes react in new ways in many other planetary systems.

With thanks to Christine Chen, a co-author and an astronomer at the Space Telescope Science Institute in Baltimore.

**Written by Bill Turnill**

## SPEEDWATCH VOLUNTEERS NEEDED

As reported in the last edition of the Packet, Speedwatch are still looking for volunteers to help them for an hour a week.

Speedwatch are a team of volunteers who have been regularly (once a week) at Widemouth Bay, speed testing the cars which go past. They've been doing this for a while now to raise awareness of the speed limit.

Speed is a major cause of accidents, and near the beaches with footpaths which are accessed across the road, we must be doubly aware.

The team is made up of four persons, one to wear the camera and count traffic, one to clock any speeding cars, one to take the registration and one to confirm the car number plate.

To date, the maximum speed which has been recorded was 48mph and most people have accepted that the speed needs to be enforced.

If you're able to spare an hour a week, please contact Rachel Roberts at

[r.roberts12@btinternet.com](mailto:r.roberts12@btinternet.com).



## P&B Interior Design

Ready made curtains, voiles,  
nets & cushions  
Curtain tracks, poles and tie backs  
all in stock

Huge selection of roller  
& Venetian blinds  
Suppliers of Velux blinds  
Custom made curtain & blind  
service available  
Farrow and Ball paint  
DMC threads and kits  
Haberdashery & accessories  
Gifts for all occasions

2 Lansdown Mews  
Lansdown Road, Bude  
01288 356303

## Pilates Classes In North Cornwall

Week St Mary, Canworthy Water,  
Warbstow, Higher Crackington  
Launceston, Bodmin, St Kew

What does Pilates do?

- Targets the deep core stabilising muscles
- Improves muscle tone, strength & joint mobility
- Improves posture, alignment & body awareness
- Corrects muscle imbalances & encourages pain-free movement
- Classes are progressive and operate on a school term basis.
- Classes limited to 12 people
- Fully qualified level three teacher

BODY CONTROL  
PILATES®

Martin Brooks 07812 959 879  
[www.northcornwallpilates.co.uk](http://www.northcornwallpilates.co.uk)  
[martin@northcornwallpilates.co.uk](mailto:martin@northcornwallpilates.co.uk)



**Personal Property Services**

**A HIGH QUALITY LINEN SERVICE BY A  
COMPANY WITH A PASSION FOR LINEN**

**Property management services offering 1st class  
housekeeping and maintenance services**

**[info@oceanbreezeltd.co.uk](mailto:info@oceanbreezeltd.co.uk) | [www.oceanbreezeltd.co.uk](http://www.oceanbreezeltd.co.uk)**

**01288 255876 | 07979 902248**

**OceanBreeze Laundry Ltd, Units 4/5 Bude, Stratton Industrial Estate EX23 8LY**



## GARDENING



*Oak before the ash, we're in for a splash*

*Ash before the oak, we're in for a soak*



If this old saying is true, then we're in for a dry summer, as the leaves on the oak trees in Poundstock were visible long before those on the ash. After a very fine, dry spring, reservoir levels are being reported as below average for the time of year. Therefore it's perhaps a good time to look at how to use less water in the garden.

Water management is a key part of gardening sustainably, and is becoming increasingly important as gardeners face pressure from the climate crisis. Mains water use in our homes and gardens is often highest when water availability is lowest – in hot, dry periods. However, by making a few simple changes, we can all make our gardens and outdoor spaces thrive on the rainfall we receive, by collecting it and re-using it during dry spells. So, switch now from “mains to rains” to make our gardens more sustainable.

Plants are most vulnerable to shortages of water when they are first planted, when their roots have not yet established into the deeper, moister layers of soil. Newly planted shrubs, trees, herbaceous perennials, seedlings, annuals and vegetables will all need watering to be managed carefully until their roots establish. Once plants have established, keeping the soil healthy by adding organic matter (preferably your own garden compost) helps to minimise the need for watering.

Rainwater can be collected from the roofs of homes, garages, greenhouses and other garden structures as long as they have gutters and a down pipe that enters the drain at ground level. Water butts are the ideal way you can collect the rain. Other ways of using less water include:

- Placing drip-trays beneath pots to collect drainage. They collect drainage and nutrients for better plant growth (but remove in winter to avoid waterlogging).
- Using a watering can instead of a hosepipe. Direct the water at the roots where it is needed, rather than the leaves.
- Avoiding watering your lawn. Longer grass means deeper roots and more drought resilience, so raise the mower blades too!
- Adding mulch around new plants lets the rain through and reduces soil evaporation, meaning less watering is required whilst roots establish.
- Adding home-made compost to your soil. Healthy soil holds more water so plants suffer less from drought.

**Cont. On page 33**



- Personal training
- Nutrition & lifestyle coaching
- Body transformations
- Programs, challenges & memberships

# RORY HODGES

Body & Behaviour  
Change Expert

Get Started Here!



More Information At  
[www.roryhodgescoaching.com](http://www.roryhodgescoaching.com)  
Or On Social Media



## GARDENING CONT. FROM PAGE 31

June is a busy time in the vegetable garden. The nights should now be frost-free, and the days are long, which gives you plenty of time to get on with the jobs that need doing.

There are lots of jobs to do, including planting out courgettes, winter squash, and sweetcorn, watering during hot spells and, of course, harvesting. Keep sowing beetroot, radishes and lettuce successionaly, every week or so, for crops in a few weeks' time. Now's the time to start enjoying your harvests – peas should be ready now, as should gooseberries and strawberries plus salads. Other vegetables to sow in June and July are pak choi (always sow after Midsummer's Day to prevent them bolting), green (spring) onions, courgettes, for a later crop, and it's time to plant out winter brassicas.

And don't forget the "Chelsea Chop" or the "June Drop" details of both are on the RHS website:

(<https://www.rhs.org.uk/pruning/chelsea-chop>)

(<https://www.rhs.org.uk/problems/june-drop>)

Happy gardening—**The Old Composter**

## EXERCISE FOR MOBILITY



**Fun Chair- Based Fitness**  
**Parkhouse Centre, Bude EX23 8LD**  
**Mondays: 9:30 - 10:30 and 11:00 - 12:00**  
**Wednesdays: 2:00 - 3:00 and 3:30 - 4:30**  
**Fridays: 9:30 - 10:30 and 11:00 - 12:00**  
**[exercising4mobility.co.uk](http://exercising4mobility.co.uk) 07562 251878**

Exercising for Mobility is a really welcoming and friendly place to be. As well as the Chair-Based Fitness Sessions, we offer tea/coffee and refreshments between Sessions, which is a great way of getting together with friends, old and new.

Also, if you have no transport, we have two dedicated Drivers who can pick you up and take you home for a charge of £2! So why not give us a try?

# EXCERPTS FROM PARISH COUNCIL MINUTES

## **Poundstock Parish Council – Summary of Ordinary Meeting Minutes**

5 March 2025

### Planning Matters

Proposal: Construction of an annexe at Ty Gwen, Long Park Drive, Widemouth. Resolved to object on the grounds of overdevelopment of the site; close proximity to the boundary; potential for overlooking; non-compliance with the development line or form; loss of biodiversity.

### New Hall for Poundstock

The planning application for the new hall has been validated and is awaiting decision.

### Public Toilets in Widemouth Bay

Signage and CCTV cameras will soon be installed.

19 March 2025

### Planning Matters

Proposal: Construction of a dwelling land east of Lakeside, Treskinnick Cross. Resolved to object on the grounds that the proposals for foul water treatment are not clear, the proposed site does not constitute round-off or infill, no mention of high voltage cables.

### Agenda items

The tender for the cleaning of public toilets has been awarded to T.J. Davis. The Local Maintenance Partnership will continue for 2025/26

Resolved to write to a parishioner who had repeatedly challenged the PC accounts and request reimbursement of the accountancy fees for the 2022/23 Accounts as no wrongdoing by the PC was identified. Should reimbursement not be received, the Clerk be authorised to pursue legal proceedings through the County Court to protect public funds.

Highways issues – it was reported that the footbridges previously identified as needing repair have now been successfully repaired by Cornwall Council. The trees have been cut down along the bank beside the A39 adjacent to Treskinnick Cross. Councillors also reported instances of overnight parking at the lay-by at Widemouth Fields, and this will be reported to the local County Councillor.

2 April 2025

### Public Open Session

The Chair invited representatives from Cavanna Homes to discuss their plans for Widemouth Bay, to be considered for potential development under Cornwall Council's Call for Sites.

### Planning Matters

Proposal: Extension above existing garage to provide additional accommodation at Brentleigh, The Crescent, Widemouth Bay. Resolved: No objection.

# PARISH COUNCIL MINUTES—CONT.

Proposal: Construct energy efficient home on the land east of the Old Smithy, Treskinnick Cross. Resolved: No objection.

## Agenda Items

Paul Taylor be awarded the electrical work for the public toilets.

Crystal Clear Services be awarded the window cleaning of the public toilets, notice boards, bus stops and defibrillator kiosk.

The call for sites requirement for the neighbourhood development plan has been published on the council's website, notice boards, and social media platforms for a period of four weeks, and it was noted that there has been no response to date.

Poundstock parish council fully supports Marhamchurch parish council in its crowdfunding efforts for the Hele Valley trail.

## 16 April 2025

### Public session

A member of the public spoke about the Widemouth Bay car park raising issues including lack of ANPR use, inadequate signage and increase in dog litter.

### Planning Matters

Ty Gwyn – 5 day protocol. It was agreed to raise concerns regarding increases in traffic, added pressure on the sewage infrastructure, and to request that it be made a condition that the annex is required to provide living space for a dependent relative.

Proposal: dwelling house Land East of The Firs (Old Bangors Methodist Church). Resolved to strongly object on the grounds that the development represents over development of the site, lies outside the designated development boundary, and is of a density and scale that is out of keeping with the surrounding area, resulting in a loss of valuable amenity space. While the council raised no objection to the previously approved garage referenced by the architect, it maintains firm opposition to the development of an additional dwelling on this site.

This this being the final meeting under the current administration, the chairman extended his thanks to retiring Cllr Steve Haynes for his valued contribution, and to all continuing councillors for their teamwork and mutual support, noting that together they have achieved a great deal and leave the new administration in a strong position. On behalf of all members, Vice-Chair Cllr Michelle Carter thanked Cllr Stephen Blake for his dynamic and dedicated chairmanship.

**This is a summary of the Parish Council minutes. For full details please see the Parish Council website [poundstock-pc.gov.uk](http://poundstock-pc.gov.uk)**



The Hall was packed for the April meeting of Marhamchurch WI, who welcomed for the second time, Medical Herbalist Katrina Werren. Katrina is a registered member of the National Institute Of Medical Herbalists and her studies included 500 hours of practical, clinical experience.

First plant up for identification was cleavers or goose grass, remembered by the group as the plant which sticks to clothes etc. This plant can be steamed as a vegetable, juiced or made into a tincture. Katrina also passed on a tip to freeze it in ice cubes to add to drinks. It is useful as a tonic and also helps with the treatment of Gout, cystitis and other bladder problems. Members were treated to a very palatable sample of a cleavers juice.

Katrina had also brought Comfrey, which is an efficient wound healer and its roots can be mashed to make a good plaster for broken bones. The roots are much stronger than the leaves and should be used carefully, but the leaves can be gently steamed and eaten as a vegetable, or dried and infused in an oil.

Next, we had the humble stinging nettle, which should be picked when young before it gets stringy. Again, this can be gently steamed for about 2 mins and used as you would spinach. It is a treatment for eczema, asthma and hay fever. The seeds can be dried or frozen to improve kidney function. Katrina had brought a nettle soup for all to try which was very tasty.

The final plant was burdock, also known as beggar's buttons because of the hook like structures on its flower heads. You can roast the roots to make a tea. It is also a good blood purifier. It is a very strong herb and should be used carefully with expert help. It has also been shown to slow down the reproduction of cancer cells and can be use in between treatments for cancer in traditional medicines. As a bonus Katrina had brought the popular drink dandelion and burdock.

As Katrina pointed out, herbal plants used to be in extensive use – our grandparents probably had knowledge of treatment using hedgerow plants. The use of herbal medicines is becoming wider as people realise their value.

Katrina would be happy to see anyone wishing to explore the use of herbal medicines . She has a Clinic- The Green Physic, which she runs from the family farm at North Petherwin, where there is a herb garden at hand and plenty of nearby hedgerows.

Members had thoroughly enjoyed Katrina's talk and she was thanked with an enthusiastic round of applause. The meeting finished with refreshments.

Next month's meeting is The Annual Meeting and Resolution Meeting.



# NeateFeet



👣 Paddings & dressings

👣 Verrucae treatment

👣 Diabetic footcare

👣 Toenail clipping

👣 Ingrowing toenails

👣 Painful corns removed

👣 Painful callus reduction

We are a husband and wife team offering mobile foot treatment in the North Cornwall area. We provide professional footcare in the comfort of your own home.

Established in 2009, we have had many satisfied clients from over a decade of providing a dedicated and committed service.

Simon Neate, *DIP FHP* 07870 508 867

Claire Neate, *DIP FHP* 07968 232 344



## R-WALL

Insulating Concrete Formwork

[www.r-wall.co.uk](http://www.r-wall.co.uk)

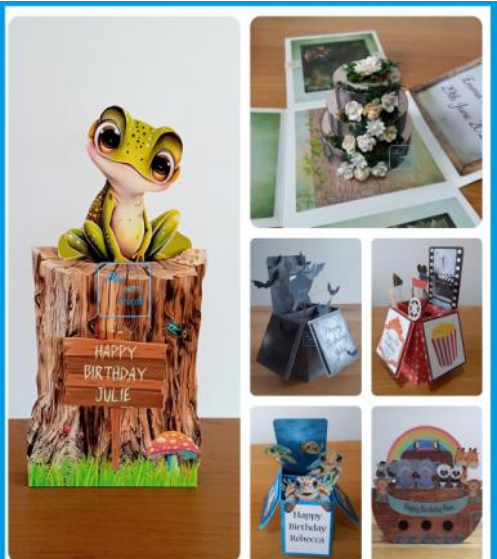
A new revolutionary UK designed ICF system, building high performance energy efficient homes with exceptional longevity.



A low carbon non-modular ICF which utilises high strength energy efficient XPS insulation, increasing construction speed, design versatility, formwork strength and thermal efficiency with achievable U-Values as low as 0.09W/(m²K)!

[info@r-wall.co.uk](mailto:info@r-wall.co.uk)

Tel: 01288 377337



Handmade, personalised cards  
So special, you'll never take them down

[www.morcards.co.uk](http://www.morcards.co.uk)  
[morcardsbytaniamor.etsy.com](https://www.etsy.com/shop/morcardsbytaniamor)



## FREE ADVERTISING FOR LOCAL EVENTS

The Packet will always advertise local community and charity events free of charge. But we don't 'just know' what's happening – you have to tell us! Our absolute deadline for the next edition is 15th July —contact Tania or Jayne at [poundstockpacket@gmail.com](mailto:poundstockpacket@gmail.com)

## DEFIBRILLATORS IN THE PARISH

**Black Rock Cafe** has a new defibrillator! It is positioned on the side of the car park hut as you drive through into the car park.

**Widemouth Bay:** next to the Summerhouse (by the church, Leverlake Road); near the top of Long Park Drive by the entrance to Pencarra and Bellair, just below the junction with Edith Walk; at the back of the public toilets just above Widemouth beach. The RNLI lifeguards also have a defibrillator, available at their hut above the beach when they are on duty.

**Treskinnick Cross:** just off the A39, in the old phone box.

**DB**  
WALLING



Cornish Stone  
Wall Specialists

- Dry stone wall repairs
- Retaining dry stone walls
- Stone work with mortared joints
- Earth stone hedging
- Landscaping
- General construction & ground works
- Garden features

**FREE QUOTES**

Call Dan on

**07968 996191**



[www.dbwalling.co.uk](http://www.dbwalling.co.uk)

WALLING | LANDSCAPING | CONSTRUCTION



LISTED IN THE TOP 20 BEACHSIDE BARS & RESTAURANTS IN THE UK (THE TIMES)



**BEACH HOUSE**

WIDEMOUTH BAY, BUDE

**NORTH CORNWALL'S SECRET HIDEAWAY**

**THE BREAK, BEACH BAR & COCKTAIL LOUNGE  
SEAFOOD, SOUL FOOD, SUNSETS**

**CHARGILLED STEAKS & SKEWERS  
LET THE SUNSHINE & GOOD TIMES ROLL!**

BEACHHOUSEWIDEMOUTH.CO.UK



## READY MIXED CONCRETE

We supply for delivery and collection:

Ready mixed concrete

Liquid floor screeds

Dry screed

Sand & Aggregates

**QUALITY**

**ASSURED**

8-wheeled, 6-wheeled conveyor  
and 4-wheeled mini mix trucks available

For quotes, bookings and more information, please  
call us on 01288 362111 (option 2) or email us at  
[rmc@macplant-ltd.co.uk](mailto:rmc@macplant-ltd.co.uk)



BSI  
ACCREDITED  
BS EN 206  
BS 8500

Mac Crete  
Bridgerule Industrial Estate  
Holsworthy  
EX22 7EB



[www.macplant-ltd.co.uk](http://www.macplant-ltd.co.uk)