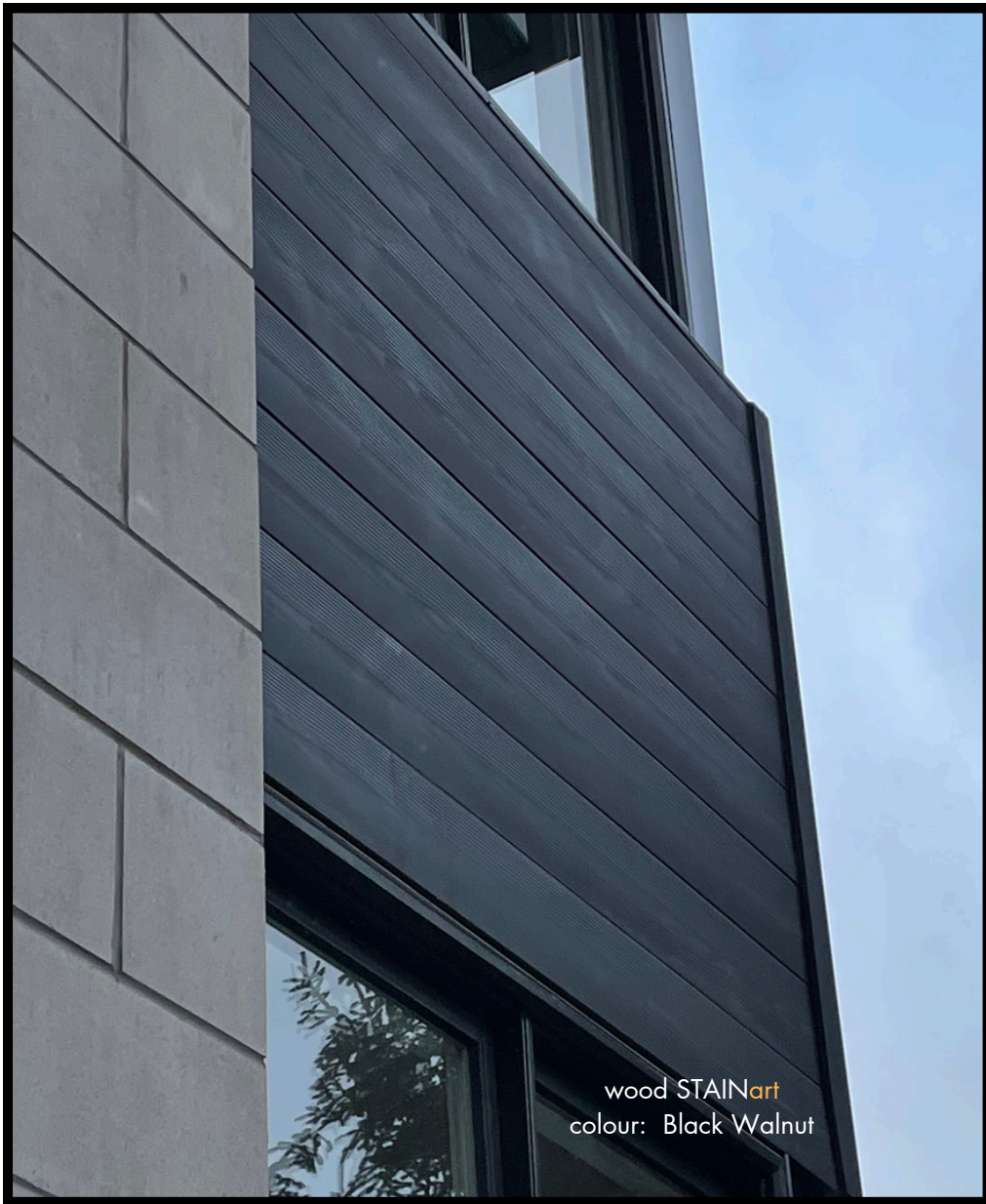




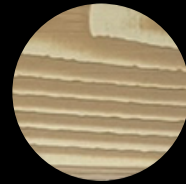
Faux Wood Moulding - STAINart



WD - STAINart - SERIES

Our insulated (R8) Faux Wood moulding products are comprised of a cementitious coating with a grain and a polystyrene insulating core. All faux wood moulding is fully finished and sealed. Our faux wood cladding is available in various custom sizes. Our standard sizes vary from 3" to 12"W.

Colour Selections



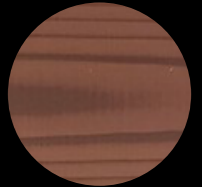
Nordic Fir



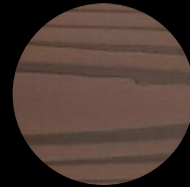
Ash Grey



Black Walnut



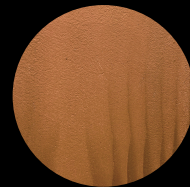
Dark Cherry



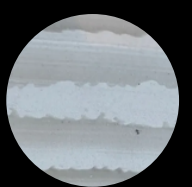
Dark Walnut



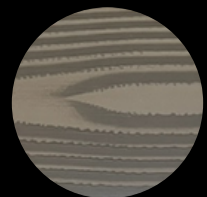
Zebrawood



Teak



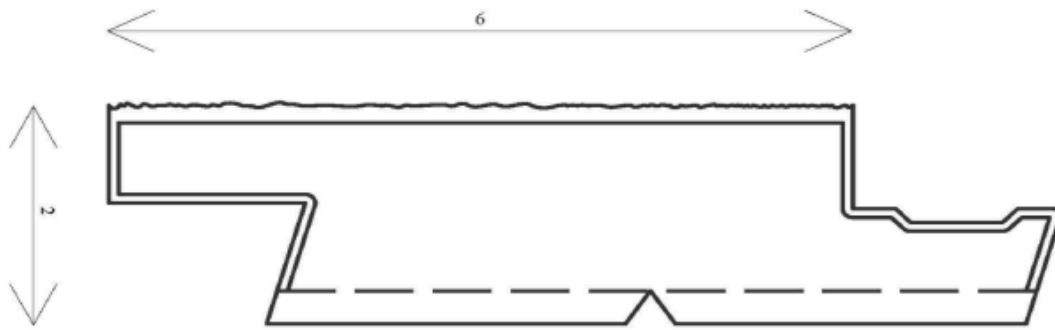
White Oak



Smokey Birch

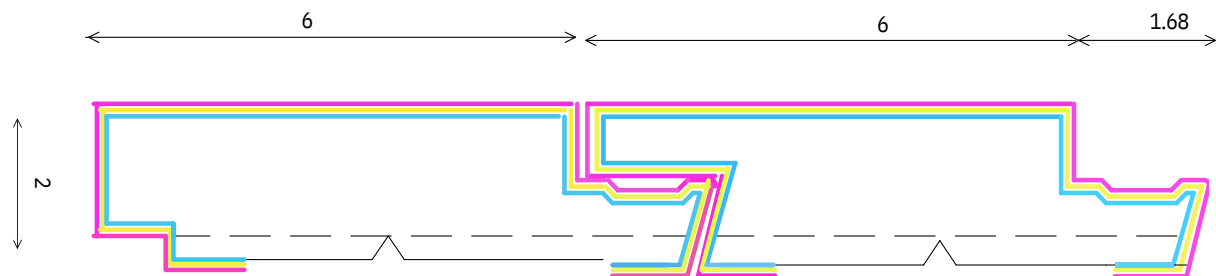
EXTERIOR MOULDING: WD-STAINart-6

*The last number of the code "WD-STAINart-6" determines the size of the board, i.e. WD-STAINart-6 is for 6" board.



DIMENSIONS

All dimensions are in inches



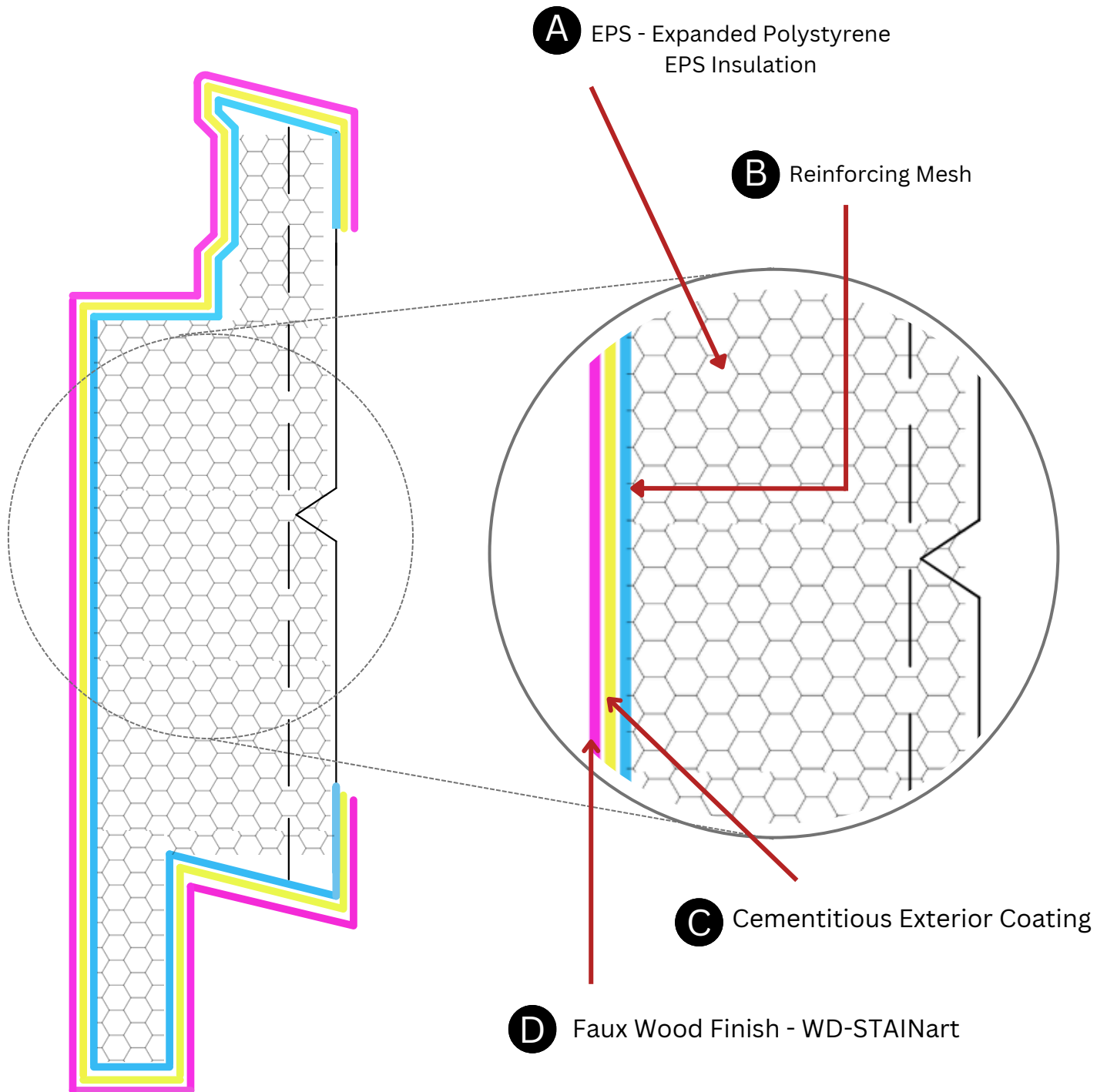
Reinforcing Mesh

Base Coat

Top Coat

Panel Section

WD-STAINart Pre-finished faux wood Panels

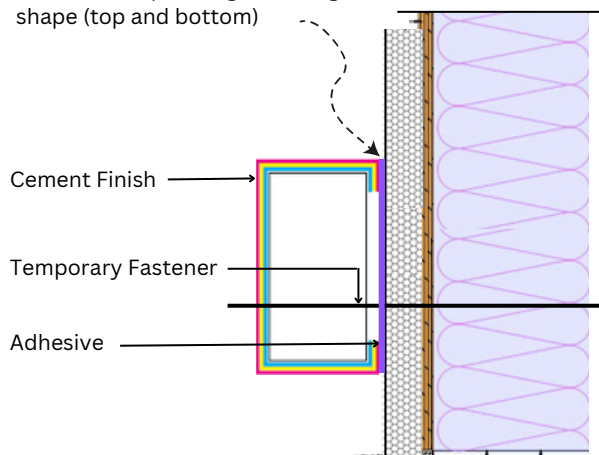




Installation Procedure

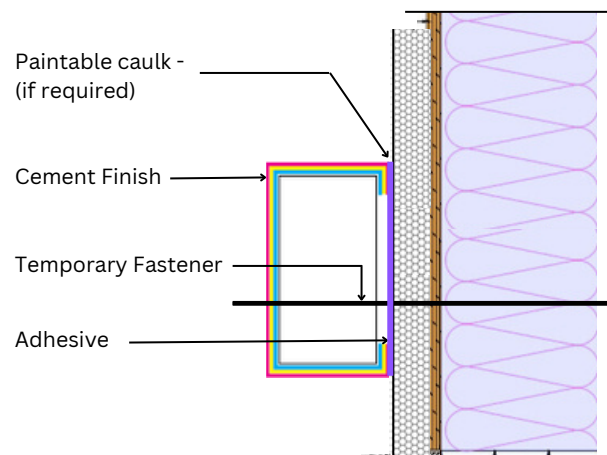
EIFS SYSTEM

Detail New: Should be installed as shown to ensure a continuous surface incorporating moulding shape (top and bottom)



Note: Profile must be installed directly to the cured basecoat of the EIFS Assembly prior to installing

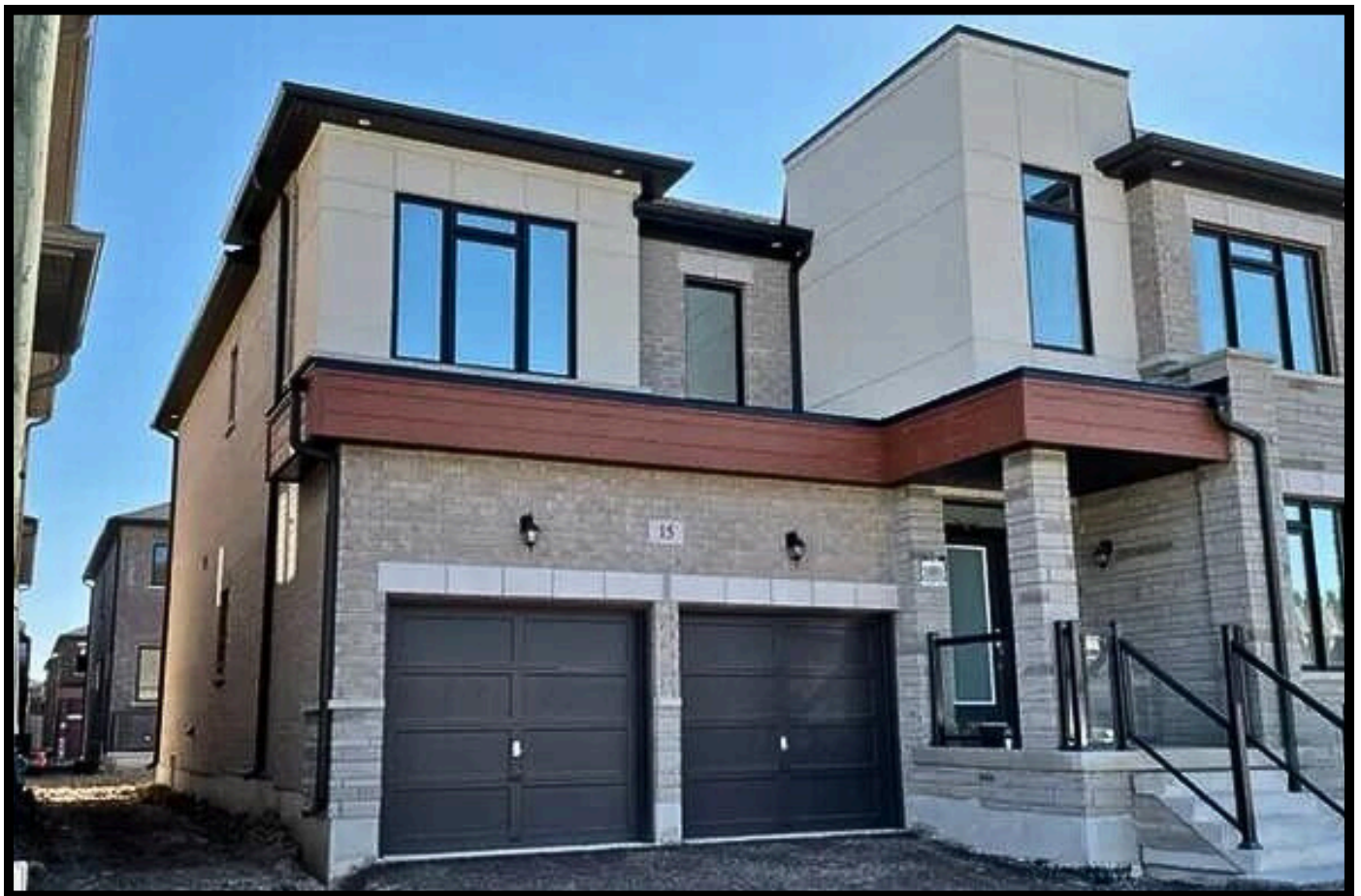
MASONRY BLOCK



Instructions

1. Approved substrate must be dry and free of dust or any other “bond breaking” materials.
2. Apply approved adhesive to back of profile using 3/8" vertical notched trowel.
3. While adhesive is wet, install Lacuno Art moulding pressing it firmly into place. Remove excess adhesive.
4. Some pieces may require mechanical attachment until adhesive sets up.







LACUNO ART
2501 Rutherford Rd, Unit 17B
Concord, ON
L4k 2N6

905.553.6050 www.lacunoart.com info@lacunoart.com