





Kinan – 3D Exhibition Design for Cityscape

Location: Cityscape KSA

Materials: Concrete, Black Paint

Design Concept

The "Kinan" design is inspired by the desire to embody the strength and resilience of modern industrial design, enhanced with a touch of contemporary elegance. The main idea centers around combining simplicity and solidity by using two powerful elements: concrete and black accents. This pairing creates a striking and distinguished look that evokes a sense of stability and sustainability.

We focused on creating a unique visitor experience within "Kinan," where strategically placed stations invite guests to take photos and interact with the design. Each element in the exhibit is crafted to attract attention, encouraging guests to engage with the space and appreciate the subtle elegance in every detail.

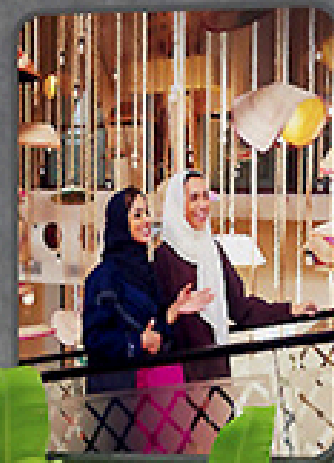






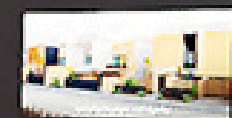






كنان
kinan

تلال
ويزيد
TALALAH RESIDENCE



كنان
kinan



عيش المكان

تلاله
ريزيدنس
TALLAH RESIDENCE

كنان
kinan

كنان
kinan

كنان
kinan

كنان
kinan





