



# colossys

We Make Technology Easy!

## **Disrupting the spinning automations**

---

A new way to engage  
with your production  
teams

We bring your spinning mill to your cell phone and computers, anywhere in the world

We enable textile machinery to communicate with users, managers and owners with the aim to switch from manual to live and uninterrupted reporting.



## About Us

---

A Pakistani startup bringing disruptive technologies to textile sector at fraction of the cost charged internationally



# The Problem



## Productivity

---

Dependency on manual  
and time-consuming  
reporting loop



## User Frustration

---

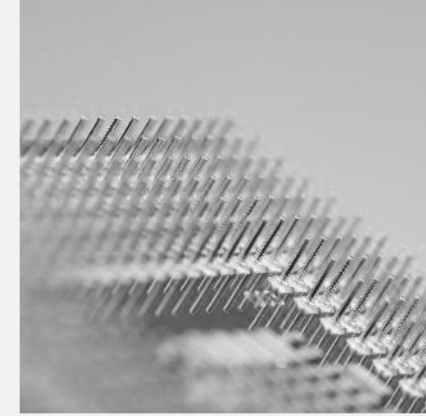
Inability to pin-point  
actual problem area



## Live Updates

---

Not able to monitor the  
current production  
environment



## Extreme Costs

---

Extreme costs of  
monitoring software and  
systems



## Scarce Analytics

---

No historic reports to  
forecast trends and  
performance evaluation



AUTO-SYS

## Solution: Auto-Sys

A low cost, indigenously developed, completely matured Auto Cone monitoring system.



Live

Live reporting of all  
winding section



Alarms

Downtime, speed,  
Production alarms via  
e-mails and SMS



Monetize

Negligible  
implementation and  
support cost



# Easy Monitoring

---

Monitor your Auto Cones in live environment on your desktop or cell phone with the ability to leave notes and observations for production staff



## Monitor

---

Monitor RPMs, Speed,  
Downtime and  
Production



## Customize

---

Make your own  
reports and charts



## Tested

---

Auto-Sys is live in  
largest spinning mill in  
Pakistan



## Authentic

---

Home grown product,  
no third part  
dependency

# Bring your mill to your screen

- 
- A dark gray background with a repeating pattern of white icons representing various industries and technologies. The icons include a factory, airplane, truck, network symbols, and others. A single icon of a factory is highlighted in red.





# Product Demo

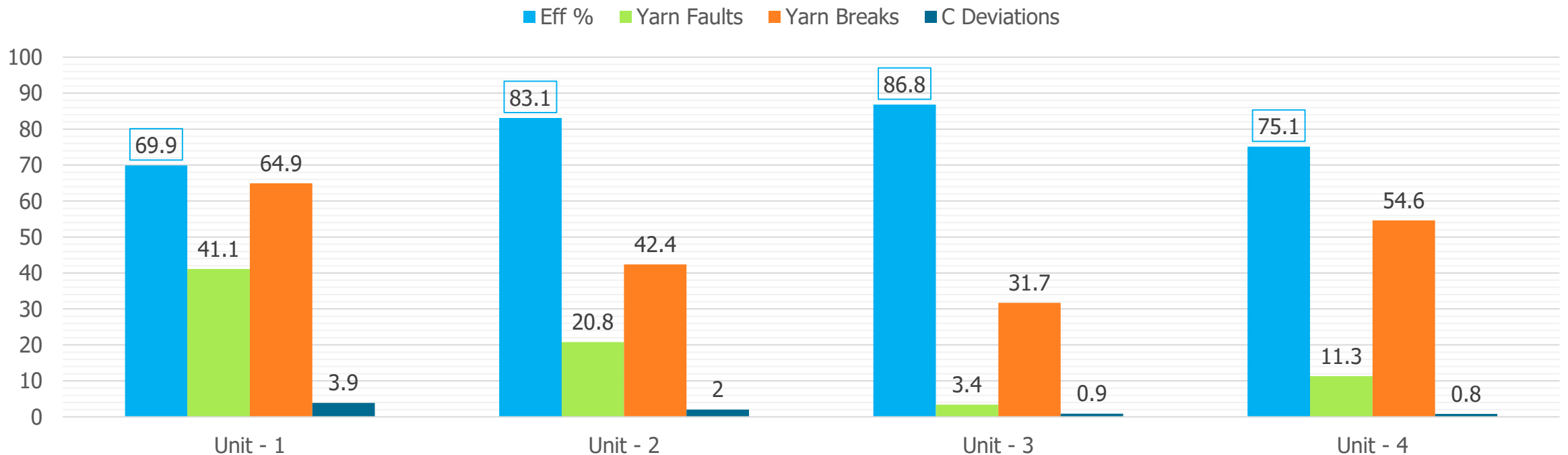
A new way to engage with textile machinery

# Monitor Live Summary Dash Boards

Take a summary look at ring sections with different variables –

- Speed
- Production
- Stoppages
- Count deviations etc.

***Winding –live as of 31-03-2020 12:34 PM***



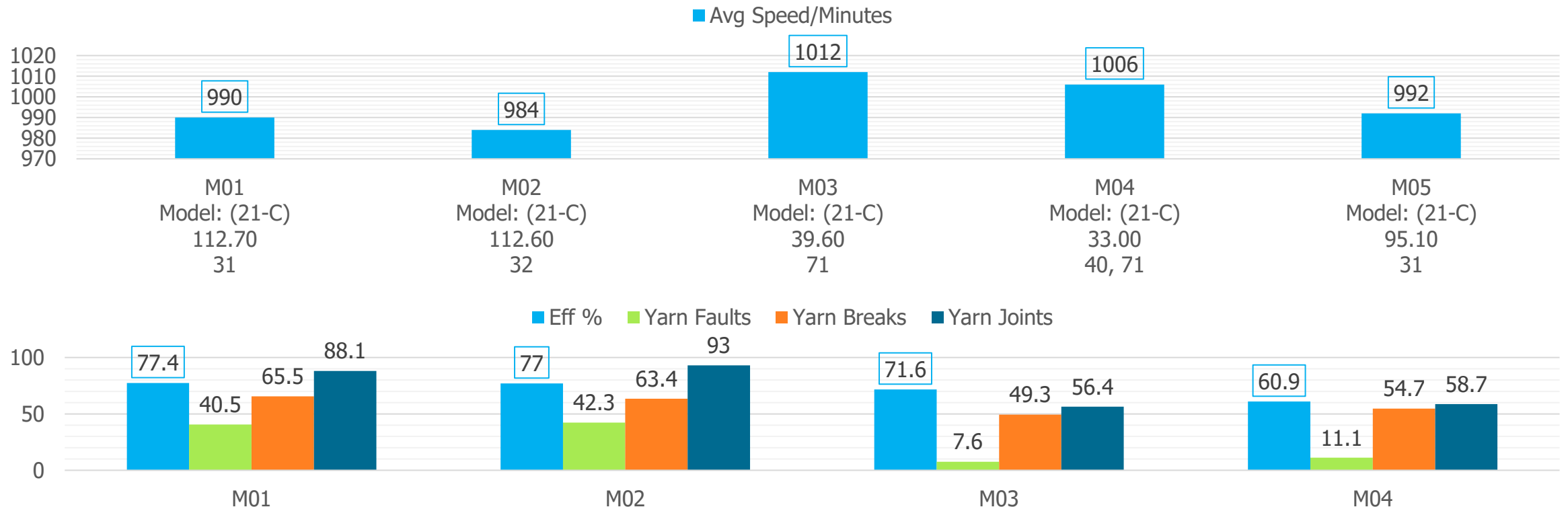


# Monitor Yarn Quality Parameters - Live

Get you winding machine on your dashboard and monitor –

- Speed
- Production Efficiency
- Yarn Faults, Breaks and Joints

**Winding –live as of 31-03-2020 12:34 PM**



# Compare Time Analysis

Extract detailed reports and numerical analysis –

- Get machine wise historical and live performance parameters
- Monitor, investigate and reduce doffing time
- Monitor, investigate and reduce machine down time
- Get reports extracted in PDF and MS Excel formats.

Machine	S	Article	Type	Count	Speed (m/Min)	PEF %	OBS (PC)h	Prod (lbs)	Length	Run Time (Hr)	Doff Time (Min)	Cops Change	Splice Time (Min)	Stop Time (Min)	Down Time (Min)	O.P. Time (Min)
M01	1	M01-31/1 CVC	Compact	31.6	-	74.5	8.0	3.6	87.40	1	0.60	44.00	25.80	4.20	0.00	0.00
M01	2	M01-31/1 CVC	Compact	31.6	990	77.5	8.0	109.1	2,647.40	45	10.20	1562.00	585.00	158.40	0.00	0.00
Total >> M01 - Process Corner 21C					990	77.5	8.0	109.1	2,647.40	0.75	0.17	26.03	9.75	2.64	0.00	0.00
M02	1	M02-31/1 CVC	Comp 60/40	31.6	983	76.9	8.0	23.5	570.20	10	1.20	330.00	131.40	26.40	0.00	21.00
M02	2	M02-31/1 CVC	Compact	31.6	985	76.8	8.0	68.4	1,660.00	28	3.60	990.00	377.40	116.40	0.00	64.80
M02	3	M02-31/1 CVC	Compact	31.6	984	77.6	8.0	25.7	624.40	11	1.20	360.00	133.20	45.60	0.00	23.40
Total >> M02 - Process Corner 21C					984	77	8.0	117.6	2,854.60	0.82	0.10	28.00	10.70	3.14	0.00	1.82
M03	1	M03-80/1 BANA	Compact	71.5	1,012	71.6	8.0	39.6	2,176.20	36	20.40	914.00	321.60	499.20	0.00	572.40
Total >> M03 - Process Corner 21C					1,012	71.6	8.0	39.6	2,176.20	0.6	0.34	15.23	5.36	8.32	0.00	9.54
M04	1	M04-80/1 BANA	Compact	71.5	1,008	62.9	8.0	9.9	543.60	9	7.20	237.00	111.00	197.40	0.00	154.80
M04	2	M04 40/1 PC AJ	Comp 52/58	40.5	-	1.8	8.0	0	0.00	0	0.00	0.00	3.60	7.20	0.00	171.60
M04	3	M04-80/1 BANA	Compact	71.5	-	37.7	8.0	1.3	73.00	2	5.40	0.00	9.00	142.20	0.00	47.40
M04	6	M04-80/1 BANA	Compact	71.5	999	61.8	8.0	3.9	216.20	4	4.20	100.00	45.00	84.60	0.00	67.20
M04	7	M04-80/1 BANA	Compact	71.5	1,011	64.9	8.0	16.9	926.20	15	10.20	436.00	170.40	315.00	0.00	253.20
Total >> M04 - Process Corner 21C					1,006	63.9	8.0	30.7	1,686.00	0.47	0.36	12.88	5.44	9.95	0.00	7.92

# Obtain Detail Quality Reporting

Extract detailed reports and numerical analysis –

- Get machine wise historical and live reports
- Extract reports in PDF and MS Excel format
- Report on all quality parameters present in Quantam Yarn Clearer

Machine	S	Article	Type	Count	YF (Km2)	YB (Km2)	N (Km2)	S (Km2)	L (Km2)	T (Km2)	FD (Km2)	PP (Km2)	PC (Km2)	C+ (Km2)	C- (Km2)	CC+ (Km2)	CC- (Km2)	J (Km2)	U (Km2)
M01	1	M01-31/1 CVC	Compact	31.6	43.50	54.90	4.60	28.60	10.30	0.00	0.00	0.00	0.00	0.00	0.00	0.00	0.00	17.20	0.00
M01	2	M01-31/1 CVC	Compact	31.6	40.20	66.00	2.70	24.10	10.20	1.20	0.00	0.00	0.20	0.90	0.40	0.20	0.30	9.30	0.70
Total >> M01 - Process Corner 21C					40.20	66.00	2.70	24.10	10.20	1.20	0.00	0.00	0.00	0.90	0.40	0.20	0.30	9.30	0.70
M02	1	M02-31/1 CVC	Comp 60/40	31.6	43.70	67.30	3.70	29.30	8.40	0.50	0.00	0.00	1.10	0.50	0.20	0.00	0.00	11.60	0.50
M02	2	M02-31/1 CVC	Compact	31.6	45.70	63.10	3.80	27.00	12.60	0.80	0.00	0.00	0.10	0.90	0.20	0.30	0.10	5.20	1.60
M02	3	M02-31/1 CVC	Compact	31.6	34.00	62.60	2.20	21.90	8.60	0.00	0.00	0.00	0.50	0.30	0.20	0.20	0.00	3.00	0.50
Total >> M02 - Process Corner 21C					42.70	63.80	3.40	26.30	10.90	0.60	0.00	0.00	0.40	0.70	0.20	0.20	0.10	6.00	1.10
M03	1	M03-80/1 BANA	Compact	71.5	7.60	49.20	0.60	2.10	4.80	0.00	0.00	0.00	0.00	0.10	0.00	0.00	0.00	3.40	0.50
Total >> M03 - Process Corner 21C					7.60	49.20	0.60	2.10	4.80	0.00	0.00	0.00	0.00	0.10	0.00	0.00	0.00	3.40	0.50
M04	1	M04-80/1 BANA	Compact	71.5	12.10	62.00	2.40	2.40	6.60	0.70	0.00	0.00	0.00	0.00	0.00	0.00	0.00	7.20	0.20
M04	2	M04 40/1 PC AJ	Comp 52/58	40.5	600.00	0.00	0.00	0.00	0.00	0.00	0.00	0.00	0.00	600.00	0.00	0.00	0.00	1,200.00	0.00
M04	3	M04-80/1 BANA	Compact	71.5	4.10	11.00	0.00	1.40	1.40	0.00	0.00	0.00	1.40	0.00	0.00	0.00	0.00	0.00	0.00
M04	6	M04-80/1 BANA	Compact	71.5	13.90	57.80	0.50	0.90	8.80	3.20	0.00	0.00	0.00	0.00	0.50	0.00	0.00	2.80	0.90
M04	7	M04-80/1 BANA	Compact	71.5	10.60	52.70	1.00	2.80	5.70	0.90	0.00	0.00	0.00	0.10	0.00	0.10	0.00	6.40	0.20
Total >> M04 - Process Corner 21C					11.50	56.40	1.40	2.40	6.40	1.10	0.00	0.00	0.00	0.10	0.10	0.10	0.00	6.20	0.30



# Keep Check on Each Spindle

- Get spindle wise historical and live reports
- Extract reports in PDF and MS Excel format
- Report on all spindle parameters present in Quantam Yarn Clearer

Ma_No	S	POS	Article	ArticleNo	Cnt	Run Time (hh:mm)	speed (m/Min)	PEF (%)	Prod (lb)	Length (km)	YF (km2)	N (km2)	S (km2)	L (km2)	T (km2)	FD (km2)	PP (km2)	PC (km2)	C+ (km2)	C- (km2)	CC+ (km2)	CC- (km2)
Ma 01	1	1	M01-31/1 CVC	COMPACT	31.6	00:40	0	67.2	1.6	39.0	43.6	5.1	28.2	10.3	0.0	0.0	0.0	0.0	0.0	0.0	0.0	0.0
Ma 01	1	2	M01-31/1 CVC	COMPACT	31.6	00:49	0	81.8	2.0	48.4	43.4	4.1	28.9	10.3	0.0	0.0	0.0	0.0	0.0	0.0	0.0	0.0
Ma 01	2	3	M01-31/1 CVC	COMPACT	31.6	00:48	990	81.1	2.0	48.0	27.1	8.3	12.5	4.2	0.0	0.0	0.0	0.0	0.0	2.1	0.0	0.0
Ma 01	2	4	M01-31/1 CVC	COMPACT	31.6	00:35	990	58.7	1.4	34.2	43.9	0.0	32.2	8.8	0.0	0.0	0.0	0.0	2.9	0.0	0.0	0.0
Ma 01	2	5	M01-31/1 CVC	COMPACT	31.6	00:44	990	73.2	1.8	43.2	50.9	0.0	46.3	4.6	0.0	0.0	0.0	0.0	0.0	0.0	0.0	0.0
Ma 01	2	6	M01-31/1 CVC	COMPACT	31.6	00:49	990	82.5	2.0	48.4	33.1	2.1	22.7	6.2	0.0	0.0	0.0	0.0	0.0	2.1	0.0	0.0
Ma 01	2	7	M01-31/1 CVC	COMPACT	31.6	00:51	990	86.0	2.1	51.0	39.2	9.8	19.6	9.8	0.0	0.0	0.0	0.0	0.0	0.0	0.0	0.0
Ma 01	2	8	M01-31/1 CVC	COMPACT	31.6	00:40	990	67.1	1.6	38.4	148.4	0.0	52.1	7.8	65.1	0.0	0.0	5.2	0.0	0.0	0.0	18.2
Ma 01	2	9	M01-31/1 CVC	COMPACT	31.6	00:45	990	77.0	1.9	45.2	37.6	2.2	19.9	15.5	0.0	0.0	0.0	0.0	0.0	0.0	0.0	0.0
Ma 01	2	10	M01-31/1 CVC	COMPACT	31.6	00:50	990	83.6	2.0	49.2	40.7	0.0	26.4	4.1	4.1	0.0	0.0	0.0	0.0	4.1	0.0	2.0
Ma 01	2	11	M01-31/1 CVC	COMPACT	31.6	00:50	990	84.8	2.1	50.0	26.0	2.0	8.0	16.0	0.0	0.0	0.0	0.0	0.0	0.0	0.0	0.0
Ma 01	2	12	M01-31/1 CVC	COMPACT	31.6	-	990	0.4	0.0	0.2	3,000.0	0.0	1,500.0	1,500.0	0.0	0.0	0.0	0.0	0.0	0.0	0.0	0.0
Ma 01	2	13	M01-31/1 CVC	COMPACT	31.6	00:40	990	67.7	1.6	39.8	50.3	5.0	30.2	15.1	0.0	0.0	0.0	0.0	0.0	0.0	0.0	0.0
Ma 01	2	14	M01-31/1 CVC	COMPACT	31.6	00:47	990	78.5	1.9	46.4	23.7	4.3	15.1	4.3	0.0	0.0	0.0	0.0	0.0	0.0	0.0	0.0
Ma 01	2	15	M01-31/1 CVC	COMPACT	31.6	00:48	990	80.8	2.0	47.8	48.1	4.2	29.3	12.6	0.0	0.0	0.0	2.1	0.0	0.0	0.0	0.0
Ma 01	2	16	M01-31/1 CVC	COMPACT	31.6	00:52	990	87.7	2.2	52.2	26.8	0.0	21.1	5.7	0.0	0.0	0.0	0.0	0.0	0.0	0.0	0.0
Ma 01	2	17	M01-31/1 CVC	COMPACT	31.6	00:50	990	84.8	2.1	50.4	31.7	4.0	19.8	6.0	0.0	0.0	0.0	0.0	2.0	0.0	0.0	0.0
Ma 01	2	18	M01-31/1 CVC	COMPACT	31.6	00:50	990	84.6	2.0	49.6	42.3	6.0	24.2	12.1	0.0	0.0	0.0	0.0	0.0	0.0	0.0	0.0
Ma 01	2	19	M01-31/1 CVC	COMPACT	31.6	00:48	990	79.7	1.9	47.0	42.6	12.8	23.4	6.4	0.0	0.0	0.0	0.0	0.0	0.0	0.0	0.0
Ma 01	2	20	M01-31/1 CVC	COMPACT	31.6	00:53	990	88.9	2.2	52.6	19.0	5.7	9.5	3.8	0.0	0.0	0.0	0.0	0.0	0.0	0.0	0.0

# Other Features

- Shift wise winding analysis
- Daily summarized information SMS configuration
- Customize SMS based alerts
- Customize email-based information and alerts
- Down spindle SMS alert
- Comparison analysis
- No hardware or maintenance centric implementation.





# How it Works for You!

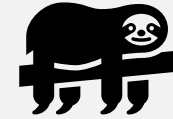
Make the data work for you.





## Identify & Rectify

Increase efficiencies and over all production of your machines, sheds and units by monitoring the key variables.



### Idle Time

Reduce idle time by monitoring doffing time



### Targets

Monitor target vs Actual performance of sheds and units



### Efficiency

Increase efficiencies by taking corrective actions

*Rs.*

### Production

Increase production by active monitoring of sheds & units.

**1**

Reduce idle and stop times by monitoring doffing time

**2**

Measure actual vs targets in pro-actively instead of reactively

**3**

Monitor speeds and prevent machine maintenance costs.

**4**

Get significant production boost by taking corrective actions each day, month and year.

# Textile Portfolio

- **Ring-Sys:** A complete Ring Frame monitoring system
- **Auto-Sys:** State of the Art, Auto Cone monitoring system
- **Loom-Sys:** A complete Loom Monitoring system
- **Elec-Sys:** A smart high- and low-tension electricity monitoring system





# colossys

## Thank You

---

Contact:

**Waseem Wali**

**Technical Lead**

[waseem@colossys.com](mailto:waseem@colossys.com)

[info@colossys.com](mailto:info@colossys.com)



[www.colossys.com](http://www.colossys.com)