

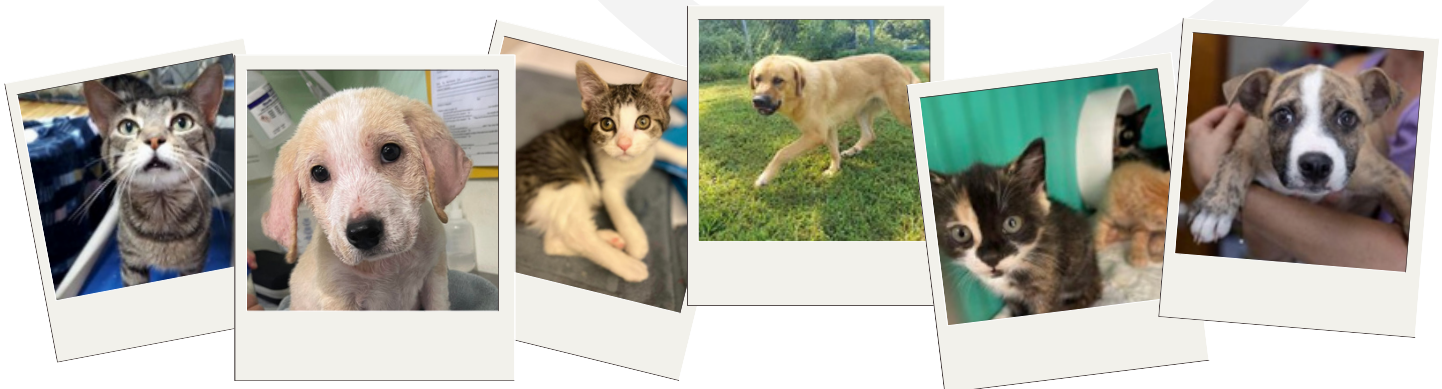


Never give up on your dreams, with hard work, they will come true.

A dream of many White River Humane Society supporters is one step closer to becoming a reality. It was a dream that former WRHS president Buddy Hendricks had hoped to be a part of before his passing. Seeing those words “Future site of White River Humane Society” is only the start of our dream for a new shelter that would be in line with current best practices in animal welfare. We know an animal’s environment plays an important role in the behavioral and physical health of shelter pets. White River Humane Society is a pro-life shelter in which our efforts involve finding forever homes for abandoned, mistreated, lost, or less fortunate pets. Last year alone, we cared for over 800 animals at WRHS. We do not euthanize healthy, friendly animals as we believe all animals deserve a second chance. Your generosity is what keeps us moving forward. We need your continued support to make this dream come true for the animals in our care.

What’s wrong with the current shelter?

Much has changed in several decades since our current shelter was built. Volunteers and board members built the current shelter with what funding was available themselves. The need for a better shelter built for the animals was their dream, and they put their hard efforts into creating just that. Over time, the current shelter’s ventilation, air circulation, drainage, and kennels have deteriorated through usage of helping thousands of animals. Kennels are crumbling, metal is rusting, sound control is deficient, and space is inadequate. The current shelter increases the stress, anxiety, fear, and sickness of the animals due to this deterioration.





What will be the benefits of a new shelter?

The new shelter location is centrally located in the county to improve accessibility for all Lawrence County residents and animal controls. The goal of a Fear Free shelter design is to increase the safety of staff and animals and decrease the stress and frustration of the animals. Complete indoor housing for all animals will provide temperature control year round, which is especially beneficial during those terribly cold and hot months. This will also decrease unwanted noise that is often associated with an animal shelter. Better air circulation will also decrease the spread of contagious diseases and allow for proper air flow to provide a cleaner environment for the animals and those visiting the shelter. There will be an isolation area for dogs and cats to decrease spread of sickness and improve the health of those animals that are sick. Employees and volunteers will have a better work environment, and visitors will have room to get to know their potential new pets better. Specific building materials will be used to allow for proper sanitation to improve the health of our shelter pets. There will also be separate dog and cat housing areas where cats are not subjected to the stress of hearing barking dogs. The entire property will be fenced in to protect animals and neighbors in the area. The shelter will also come with surveillance to protect the property and animals.

What will donations fund?

WRHS is committed to building a new shelter. The funds raised for our New Building Fund, will ensure that the new shelter will meet animal welfare needs now AND in the future. Our daily operation costs \$887.89 per day, and all current donations, fundraising, and government contracts go towards our daily operation costs. With your generous support of the New Building Fund, you are contributing towards creating a better life for the homeless animals of Lawrence County. The shelter animals are there because they had no one else to depend on. Help us to continue our mission by donating to our New Building Fund.



What will it take to get started?

We are in the beginning stages of research for what we want to incorporate in our new facility. Our WRHS Board Members have reached out to nearby shelters that have constructed new facilities within the past few years. We have found the ballpark figure for those new facilities to be around 3 to 4 million. We will have a specific financial goal, once we've had the opportunity to meet with animal shelter planners and develop specific plans for the new White River Humane Society. Due to generous donations from the community, we are off to a good start with over \$700,000 in our New Building Fund as of today. However, we will need to raise funds to be able to make this vision a reality.



We need your help.

If you would like to donate directly to the WRHS New Building Fund, mail a check payable to White River Humane Society (or WRHS) and write "New Building Fund" in the memo line.

Mail to:

WRHS
PO Box 792
Bedford, IN 47421

You can also donate via PayPal on our website WhiteRiverHumaneSociety.org and follow up with an email to whiteriverhumanesociety@gmail.com to share your intentions for the donation to be directed to the New Building Fund.

We appreciate your support!

**Thank you for helping
make this dream come true!**