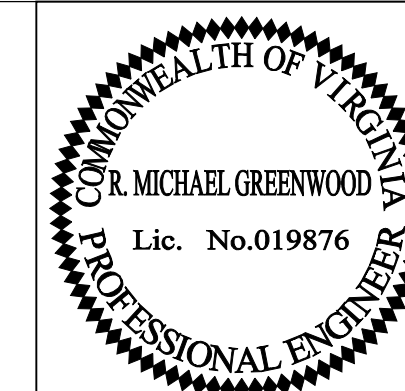


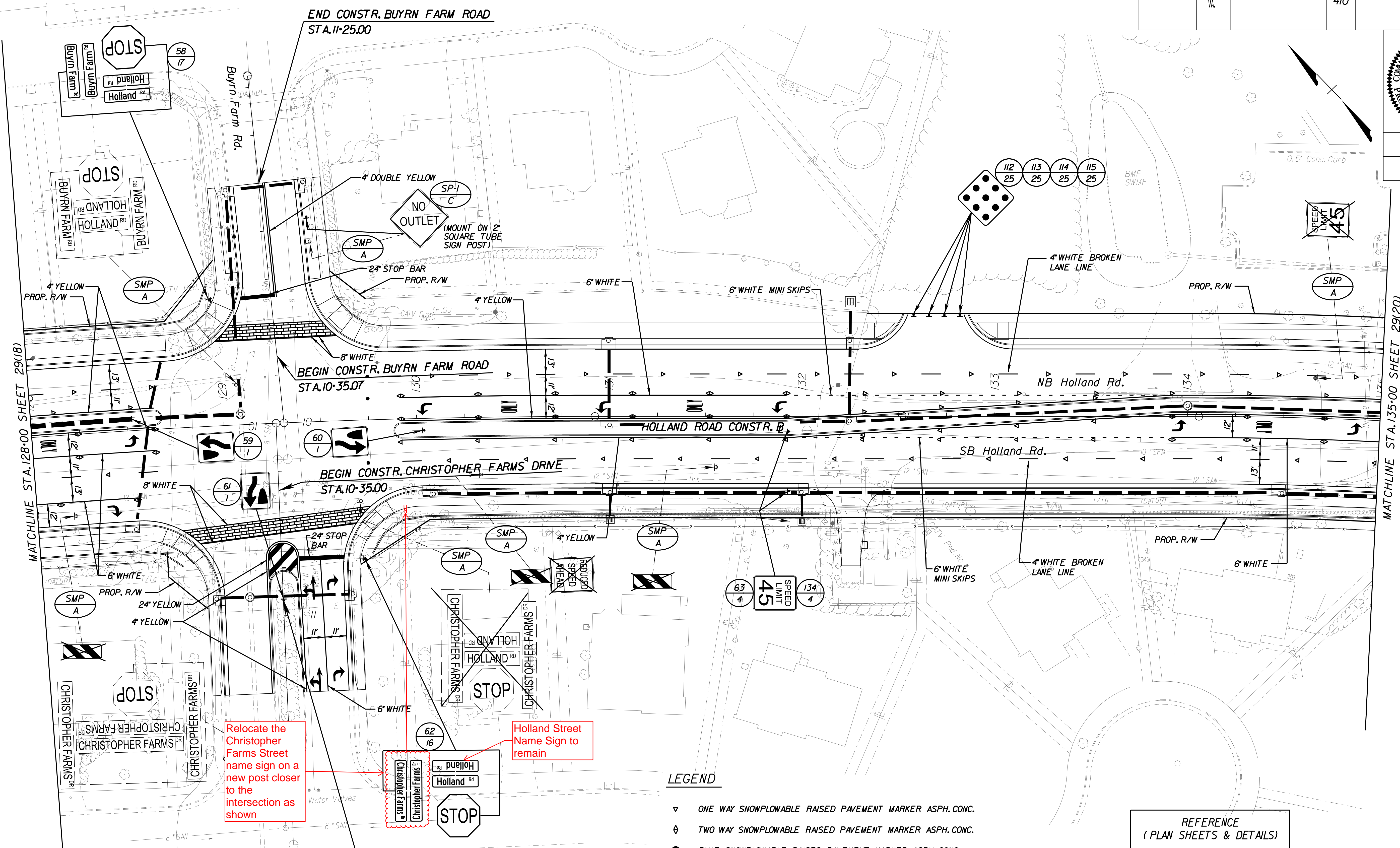
SURVEYED BY \_\_\_\_\_  
 SUPERVISED BY NELSON LEE, P.E. (757) 494-5485  
 DESIGNED BY URS CORPORATION (757) 499-4224

DESIGN FEATURES RELATING TO CONSTRUCTION OR TO REGULATION AND CONTROL OF TRAFFIC MAY BE SUBJECT TO CHANGE AS DEEMED NECESSARY BY THE DEPARTMENT

REVISED	STATE	FEDERAL AID PROJECT	ROUTE	STATE PROJECT	SHEET NO.
	VA.		410	U000-134-145, RW-201 C-501	29(19)



URS CORPORATION  
 VIRGINIA BEACH, VA  
 TRAFFIC ENGINEER



Relocate the Christopher Farms Street name sign on a new post closer to the intersection as shown

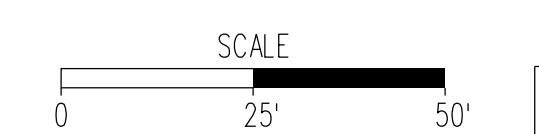
Holland Street Name Sign to remain

**LEGEND**

- ▽ ONE WAY SNOWPLOWABLE RAISED PAVEMENT MARKER ASPH. CONC.
- ◇ TWO WAY SNOWPLOWABLE RAISED PAVEMENT MARKER ASPH. CONC.
- BLUE SNOWPLOWABLE RAISED PAVEMENT MARKER ASPH. CONC.
- PAVEMENT MESSAGE MARKING ELONGATED ARROW SINGLE
- ↔ PAVEMENT MESSAGE MARKING ELONGATED ARROW DOUBLE
- ONLY PAVEMENT MESSAGE MARKING "ONLY"
- SCHOOL PAVEMENT MESSAGE MARKING SCHOOL ZONE

REFERENCE (PLAN SHEETS & DETAILS)	
ROADWAY	19

**TRAFFIC CONTROL PLANS**



PLAN NO.	PROJECT	FILE NO.	SHEET NO.
	U000-134-145		29(19)