



WeChat Official Account

Official Website: www.hsrobotics.cn

Service Hotline: 400-9655-321



Foshan Huashu Robotics Co.,Ltd.

Address: No. 19 Taoyuan East Road, Nanhai District,
Foshan, Guangdong
Postcode: 528234
Phone: 0757-81991729
Fax: 0757-81991726
Email: huashu@hzncc.com

Shenzhen Huashu Robotics Co.,Ltd.

Address: Shenzhen Nanshan District of Science and
Technology production and research base
Postcode: 518000
Phone: 0755-26733753
Fax: 0755-26723082
Email: sz-adm@hzncc.com

Quanzhou Huashu Robotics Co.,Ltd.

Address: No. 288, Chonghong Street, Economic and
Technological Development Zone, Quanzhou
City, Fujian Province
Postcode: 362000
Phone: 0595-28857688
Fax: 0595-28857688
Email: quanzhou@hzncc.com

Ningbo Huashu Robotics Co.,Ltd.

Address: No. 128 xingyong Road, Jiangbei District,
Ningbo, Zhejiang
Postcode: 315031
Phone: 0574-87286790
Fax: 0574-87280970
Email: market@huazhongcnc.com

Shandong Huashu Intelligent Technology Co., Ltd.

Address: Workshop A3 in Mozi Science and
Technology Park of Tengzhou, Xizhong Road,
Jinghe Street, Tengzhou County, Zaozhuang
City, Shandong Province.
Postcode: 277599
Phone: 15665292180
Email: sdhs@hzncc.com

Chongqing Huashu Robotics Co.,Ltd.

Address: No.5-69, TianShui Yunhan avenue, Beipei
District, Chongqing City,China
Postcode: 400714
Phone: 023-88026882
Fax: 023-88537332
Email: huashu@hzncc.com

Dongguan Huashu Robotics Co.,Ltd.

Address: Building 4, No. 234, provincial road S358,
Jinxia, Chang'an Town, Dongguan, Guangdong
Postcode: 523843
Phone: 0769-82986658
Fax: 0769-22242945
Email: dghuashu@hzncc.com

Suzhou Huashu Robotics Co.,Ltd.

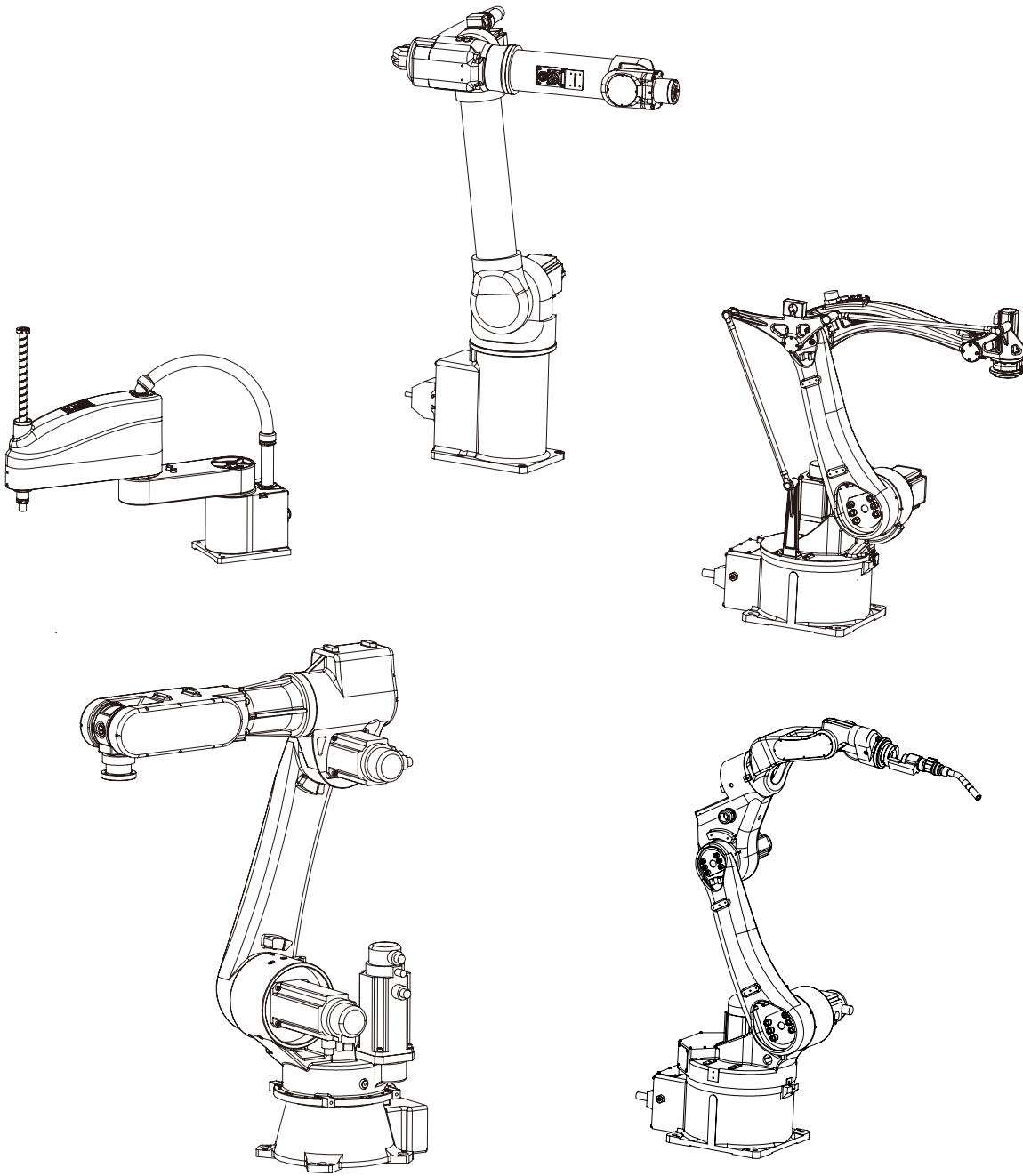
Address: No. 16, science and Technology City, Suzhou
hi tech Zone 116
Postcode: 215000
Phone: 0512-68078056
Fax: 0512-68078056
Email: suzhou@hzncc.com

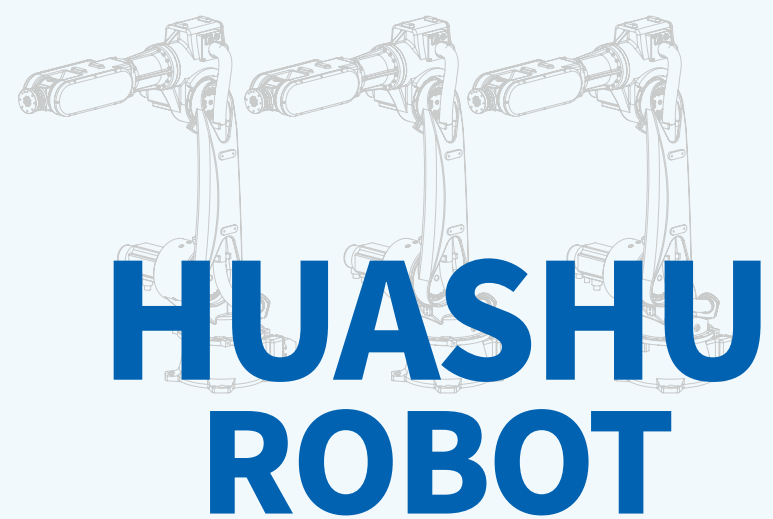
Hunan Huashu Intelligent Technology Co., Ltd.

Address: Building C12, Chuangye Innovation Park, No.
88 Changtang Road, Yunlong Demonstration
Zone, Zhuzhou, Hunan Province.
Postcode: 412000
Phone: 0731-28239199
Fax: 0731-28239199
Email: 13886185106@163.com

Wuhan Huazhong Numerical Control Co.,Ltd.

Address: Wuhan science and Technology Park, Huazhong
University of Science and Technology
Postcode: 430223
Phone: 027-87180025
Fax: 027-87180306
Email: market@huazhongcnc.com

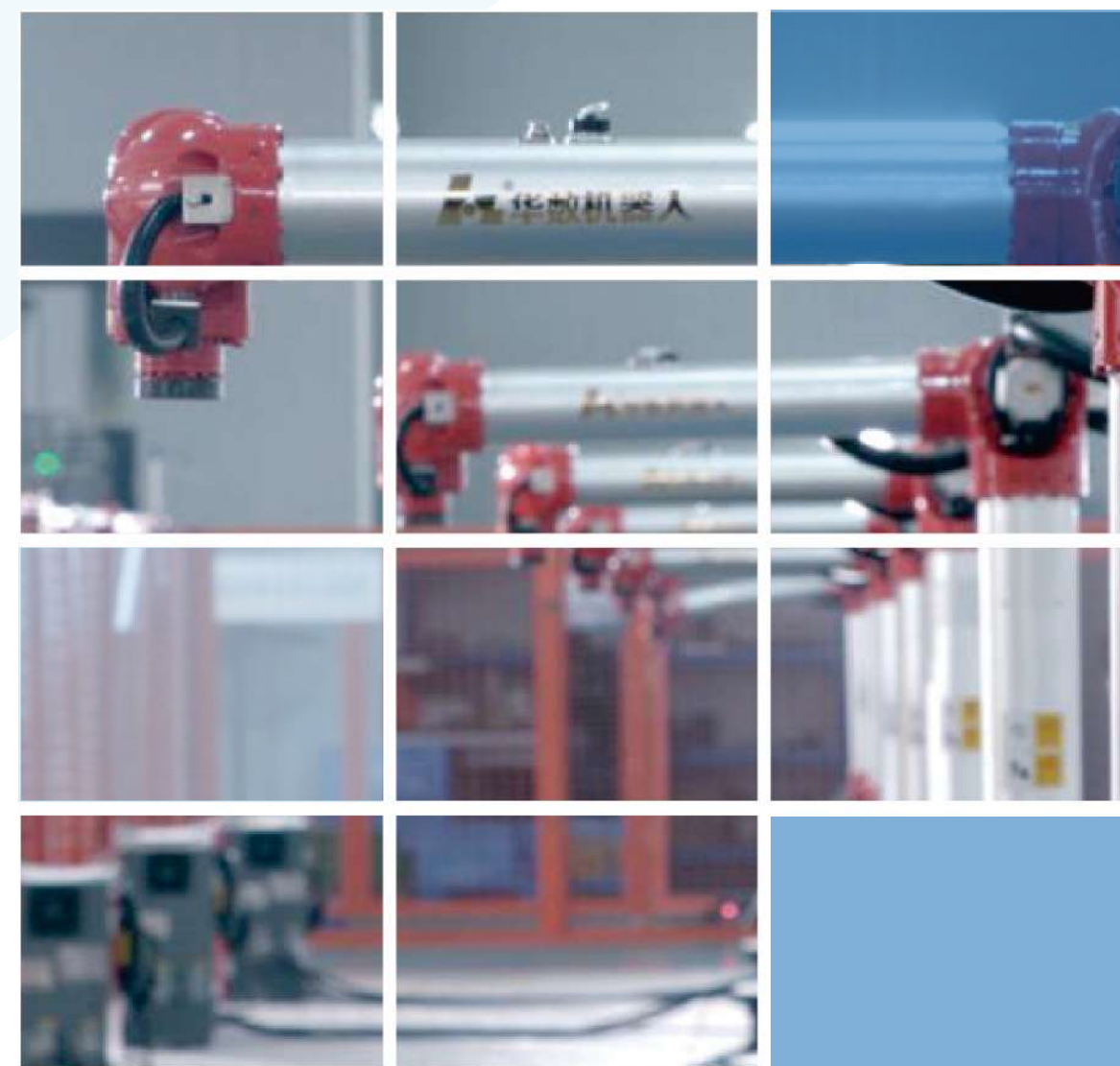




Equip 'Advance Industrial Robots' with 'Chinese Intelligence Manufacture' .

Our Strategies

- Aligned to the market's need
- Bind innovation to our soul
- Take quality as matter of life
- Values the talents





Production base



Production base

OUR GOAL IS TO
RESEARCH AND DEVELOP
DOMESTIC INDUSTRIAL
ROBOTS.

Huashu Robot, as a subsidiary of Wuhan Huazhong Numerical Control Co., Ltd. (stock code: 300161), has companies in Foshan, Chongqing, Shenzhen, Dongguan, Ningbo, Suzhou, Quanzhou, and Nanning, covering South China, East China, Central China, and Southwest China, at the same time, exploring actively the international market. It is a national high-tech enterprise integrating product research and development, manufacturing and application, a leading brand in industrial robots in China, and an expert in intelligent manufacturing and smart factory overall solutions. The annual production capacity of industrial robots is 10,000 sets.

Huashu Robot takes independent innovation and the build of national brand of industrial robots as its mission, and fully implements the "PCLC" industrial robot development strategy: that is, to focus on general multi-joint industrial robot products (P) and take the development and industrialization of domestic robot core basic components (C) as the breakThrough-hole, take the application of industrial robot automation line (L) as the goal, take the intelligent cloud platform (C) as the weapon of surprise for the industry's success, focusing on the research and development of the robot body and the performance and reliability of the whole machine, explore actively on the automation, intelligence, application

such as smart factories. At present, it has mastered six series of more than kinds of complete robot products, realized independently safety and controllability in industrial robot controller, servo drive, servo motor and robot body, and formed more than 300 independent intellectual property rights. Our products are widely used in 3C, home appliances, hardware, automobiles, CNC, food, shoemaking, logistics and other fields.

Huashu Robot is deeply integrated into the construction of the National Robot Integration Innovation Center, forming a coordinated development pattern of the entire industry chain, integrating independent core technologies, core components, and industry 4.0 overall solutions. In the face of new round of scientific and technological revolution and industrial transformation opportunities, Huashu Robot assists the transformation of intelligent manufacturing with innovative technologies of "higher, faster, and smarter", and realizes its large-scale promotion and application with the robot technology as the core, injects strong power for the high-quality development of the equipment industry, and continues to create value for global customers with leading products and services. Huashu Robot, let the intelligent equipment technology company with the world!

Development History

Quality is the unshakable foundation.
It is also our dedication to perfection.

To inherit and promote the legacy of national brand, Huashu has been persisting in the philosophy of revolution and innovation. As the unforgettable glory brought by, it has been firmly marked and remembered in our history.

80年代

Huazhong University of Science And Technology started research on robotic control technology

2006年

★ Shenzhen Huazhong CNC Co., Ltd was established and later renamed as Shenzhen Huashu Robot Co., Ltd in 2013.

2013年

★ Huazhong CNC entered the field of industrial robots and registered the "Huashu Robot" brand. Chongqing Huashu Robot Co., Ltd. was established. In April of the same year, Dongguan huashu Robot Co., Ltd. was established.

2014年6月

★ The first Huashu robot successfully launched. At the same time, the first Huashu product testing production line started running.

2015年

★ Quanzhou Huashu Robot Co., Ltd. and Quanzhou Intelligent Research Institute were established.

2015年

The self-developed 3 series of 11 robots have been mass-produced and sold, and the localization rate has reached more than 80%, making it the largest robot manufacturing enterprise in the Midwest.

2013年10月

★ Suzhou Huashang Robot Co., Ltd. was established.

2009年

Huazhong CNC industrial robots began to be used in processing automotive parts, precision machining and other fields.

1998年

Wuhan Huazhong Numerical Control Co, Ltd has undertaken the technical foundation of Huazhong University of Science and Technology and the National Numerical Control System Engineering Technology Research Center, and completed the research and development of Huazhong I-type teaching robot.

2016年

★ Ningbo Huashang Robot Co., Ltd. was established, Changzhou Huashang Robot Co., Ltd. was established.

2017年

Huashu Robot completed the national layout in those areas in North China, East China, South China and West China. In the same year, our BR series robot, the unique innovation in China, firstly provided the bi-rotation model and structure and won the "Oscar" in the field of Chinese design-2017 China Good Design Silver Award

2019年

The release of new generation highly protected bi-rotation six-axis robot and small four axis robot.

2022年

publish a new generation of industrial collaboration robot CR605 and a SR10 robot with high-speed and high-precision performance.

2021年

The brand new generation of high precision assembly JR607 robot, high speed and high precision SR20 robot, 130KG flexible and large load MD4130 robot, 15KG high precision welding JH615 robot were released.

2020年

Huashu granted two international patents to invention based on the structural and algorithmic innovation on BR bi-rotation series robot, which is another great leap forward of the indigenous design brand.

2018年6月

A new generation of intelligent robots released.

2016年3月

Huashu independently developed 5 series of more than 30 complete robot products and realized mass production and application.

2015年10月

★ Huazhong CNC acquired Jiangsu Jinming Industrial Robot Automation Co., Ltd., which specializes in robot system integration, to further expand the application industry.



Intellectual Property

Through-hole independent design, Huashu now has more than 300 proprietary technology covering control, drives, design, application, automation etc. Fills multiple technological blanks in our country.



High technology / Innovation products awards.



- ◇ Bi-rotation robot won the "Canton High-tech Product" award.
- ◇ Won "The Canon High-tech Product" award.
- ◇ SCARA robot won the "Canton High-tech Product" award.
- ◇ HSR-JR612 robot won the "Canton High-tech Product" award.
- ◇ HSR-HC410 robot won the "Canton High-tech Product" award.
- ◇ HSR-BR Bi-rotation robot won "The most innovative product" award.
- ◇ 30kg 6 axis robot won the "Canton High-tech Product" award.
- ◇ Theory and practice integrated robot won the "Canton innovative Product" award.
- ◇ 5kg 6 axis robot won the "Canton High-tech Product" award.
- ◇ Multi-purpose training robot won the "Canton innovative Product" award.
- ◇ HSR-JR620 robot won the "Canton High-tech Product" award.
- ◇ Modelized robotic design won the "Canton High-tech Product" award.
- ◇ Modelized powerbox design won the "Canton High-tech Product" award.
- ◇

Robot technology patent



- ◇ Numerical method for obtaining the inverse kinematics of six-degree-of-freedom serial robot with offset wrist
- ◇ Mobile phone shell grinding workstation based on industrial robot
- ◇ Machining fixture of stator
- ◇ A method for storing double-buffer robot software logs
- ◇ Flexible positioning system
- ◇ Six-axis robot capable of flexible wiring
- ◇ Copying fixture for anti-shedding and anti-deformation in negative pressure groove
- ◇ Control cabinet of industrial robots
- ◇ About the grinding table without constant output pressure controlled by servo drive device
- ◇ Auxiliary arm of the punching robot on the press line
- ◇ Automatically polishing system based on robot
- ◇ Stamping system of the edge conveying equipment is used for metal stamping
- ◇ Transport device that can be automatically loaded and unloaded on a pier
- ◇ Robot application teaching platform and its control system
- ◇ Multi-joint industrial robot-bispir
- ◇ The invention of the general SCARA robot
- ◇ TCP calibration method of industrial robots
- ◇ Control method of front and rear axle drive electric vehicle in regenerative braking process
- ◇ Robotic control system for spraying
- ◇ A joint robot
- ◇ Robotic multi-functional fixture
- ◇ The conveying drum line of the carton
- ◇ Robotic paper card suction cup fixture
- ◇ Multi-joint industrial robot-bispir with high protection
- ◇ Automated assembly line
- ◇ Modular automatically paper feeding board of robot
- ◇ Adjustable paper card storage mechanism
- ◇ Adjustable robotic table
- ◇ Automated assembly and packaging line
- ◇ Intelligent spraying workstation of industrial robots
- ◇

Servo drive/motor patent



- ◇ A motor electric field phase zero correction system and calibration method
- ◇ A Test system and method for servo d river frequency response
- ◇ Circuit for suppressing surge current by PTC resistor
- ◇ Utility model of inverter based on single-tube IGBT inverter
- ◇ Multi channel data transmission and method based on single-chip asynchronous serial port
- ◇ (New type) Isolated DC power supply 201621170925.1 the patent certificate
- ◇ A high-power multi-purpose three-phase voltage supply system
- ◇ Stator of motor
- ◇ Mixed iron core motor
- ◇ Rotor of AC permanent magnet servo motor
- ◇ Rotor of permanent magnet synchronous motor
- ◇ Servo driver auxiliary debugging Software copyright
- ◇ Hardware monitoring platform software
- ◇ Huashu Robotic control system V1.0 for small appliance assembly line
- ◇ Huashu Robotic automation master control software system v2.0.503
- ◇ Servo drive control system of industrial robot
- ◇ Debugging platform of Control Assistant system for Huashu III Controller
- ◇ Huashu Robotic control system V1.0 for stamping line
- ◇ Huashu Robotic control system V1.0 for applying to the teaching platform
- ◇

Service Network

No matter when and where the service is always consistent.



Business distribution

As Huashu's service network gradually cover the nation, we also established a highly efficient service system. This system allows our engineers around the country to providesolid operation training and on-time sales services to our customers.

Aftersales service

We value our clients' experience. It is considered as the essential quality for Huashu's promotion and development. We want every product user to enjoy the same high-quality service all the time.

HSR-JR/JM Series

6 axis joints robot performance parameters



Product model		HSR-JR603	HSR-JR605	HSR-JR607	HSR-JR612	HSR-JM612	HSR-JR618	HSR-JR630	HSR-JR650 JR680	HSR-JR6150	HSR-JR6210	HSR-JR6300 JR6500
Degree of freedom		6	6	6	6	6	6	6	6	6	6	6
Payload		3Kg	5kg	7Kg	12Kg	12Kg	18Kg	30kg	50kg 80kg	150Kg	210Kg	300kg 500kg
Maximum operate radius		571.5mm	746mm	911.5mm	1555mm	1555mm	1989mm	1751mm	2400mm 2200mm	2766mm	2700mm	3000mm
Repeat positioning accuracy		±0.02mm	±0.02mm	±0.02mm	±0.06mm	±0.06mm	±0.05mm	±0.05mm	±0.08mm ±0.07mm	±0.07mm	±0.07mm	±0.1mm
Range of motion	J1	±180°	±200°	±155°	±168°	±168°	±155°	±155°	±180°	±180°	±180°	±180°
	J2	-155°/+5°	-180°/0°	-180°/+44°	-170°/+75°	-170°/+75°	-175°/+70°	-175°/+70°	-160°/70°	-10°/-145°	+77°/-59°	-145°/0°
	J3	-20° /+240°	+80° /+240°	-17°/+251°	+40° /+265°	+40° /+265°	+45°/+260°	+45°/+260°	+10°/265°	+90°/+250°	+80°/-90°	+20°/+195°
	J4	±180°	±180°	±180°	±180°	±180°	±360°	±360°	±360°	±400°	±180°	±145°
	J5	±95°	±115°	±120°	±108°	±118°	±131°	±125°	±105°	±115°	±120°	±105°
	J6	±360°	±360°	±360°	±360°	±360°	±360°	±360°	±360°	±400°	±360°	±360°
Maximum speed	J1	300°/s, 5.23rad/s	370°/s, 6.46 rad/s	450°/s, 7.85rad/s	176°/s, 3.07rad/s	176°/s, 3.07rad/s	233°/s, 4.06rad/s	233°/s, 4.06rad/s	127°/s, 2.21rad/s	107°/s,1.87rad/s	125°/s,2.18rad/s	90°/s,1.571rad/s 55°/s,0.959rad/s
	J2	262.5°/s, 4.58rad/s	300°/s, 5.24 rad/s	360°/s, 6.28rad/s	176°/s, 3.07rad/s	176°/s, 3.07rad/s	141°/s, 2.46rad/s	141°/s, 2.46rad/s	127°/s, 2.21rad/s	105°/s,1.83rad/s	115°/s,2.007rad/s	90°/s,1.571rad/s 55°/s,0.959rad/s
	J3	262.5°/s, 4.58rad/s	375°/s,6.54rad/s	445.7°/s, 7.78rad/s	176°/s, 3.07rad/s	176°/s, 3.07rad/s	248°/s, 4.33rad/s	248°/s, 4.33rad/s	104°/s, 1.81rad/s	105°/s,1.83rad/s	115°/s,2.007rad/s	90°/s,1.571rad/s 55°/s,0.959rad/s
	J4	300°/s, 5.23rad/s	392°/s, 6.84 rad/s	487.5°/s, 8.51rad/s	426°/s, 7.43rad/s	426°/s, 7.43rad/s	360°/s, 6.28rad/s	356°/s, 6.22rad/s	177°/s, 3.08rad/s	174.7°/s,3.05rad/s	155°/s,2.71rad/s	110°/s,1.959rad/s
	J5	262.5°/s, 4.58rad/s	370°/s, 6.46 rad/s	487.5°/s, 8.51rad/s	270°/s, 4.71rad/s	270°/s, 4.71rad/s	487°/s, 8.5rad/s	386°/s, 6.74rad/s	155°/s, 2.70rad/s	99°/s,1.72rad/s	160°/s,2.8rad/s	110°/s,1.959rad/s
	J6	480°/s, 8.27rad/s	600°/s, 10.47 rad/s	487.5°/s, 8.51rad/s	480°/s, 8.37rad/s	480°/s, 8.37rad/s	487°/s, 8.5rad/s	487°/s, 8.5rad/s	187°/s, 3.26rad/s	222°/s,3.87rad/s	220°/s,3.84rad/s	160°/s,2.792rad/s
Maximum speed	J4	0.04kgm ²	0.1kgm ²	0.17kgm ²	0.17kgm ²	0.17kgm ²	2.0kgm ²	0.8kgm ²	25kgm ²	25kgm ²	80Nm	-
	J5	0.05kgm ²	0.36kgm ²	0.52kgm ²	1.2kgm ²	1.2kgm ²	3.7kgm ²	3.3kgm ²	32.7kgm ²	55kgm ²	199Nm	-
	J6	0.05kgm ²	0.5kgm ²	0.87kgm ²	1.2kgm ²	1.2kgm ²	1.2kgm ²	8.7kgm ²	32.7kgm ²	55kgm ²	199Nm	-
Allowable moment of inertia	J4	6.4Nm	8Nm	13.4Nm	15Nm	15Nm	40.9Nm	30.7Nm	330Nm	320Nm	706Nm	1176Nm
	J5	6.4Nm	16Nm	18.1Nm	35Nm	35Nm	79.8Nm	73.4Nm	340Nm	600Nm	1268Nm	1568Nm 3136Nm
	J6	12.7Nm	18Nm	21.5Nm	35Nm	35Nm	35.0Nm	140.4Nm	400Nm	600Nm	1268Nm	1960Nm 3136Nm
Applicable environment	Temperature	0~45°	0~45℃	0~45°	0~45°	0~45°	0~45℃	0℃-45℃	0~45°	0~45°	0~45℃	0~45℃
	Humidity	20%~80%	20%~80%	Normal below 75%RH	20%~80%	20%~80%	20%~80%	20~80%	20%~80%	20%~80%	20%~80%	20%~80%
	Other	Avoid contact with inflammable or corrosive gas and liquid, Stay away from electronic noise(plasma)					Avoid contact with inflammable or corrosive gas and liquid, Stay away from electronic noise(plasma)					
Teach pendant cable length		8m	8m	8m	8m	8m	8m	8m	8m	8m	8m	8m
Machine- Power box connect cable length		3m	3m	3m	6m	6m	6m	6m	8m	8m	8m	3m 6m
I/O parameters		Pins: 32 pins input(NPN), 31 pins output(NPN);					Pins: 32 pins input(NPN), 31 pins output(NPN);	Pins: 32 pins input(Both PNP and NPN)31 pins output (NPN) ;	Pins: 31 pins input(NPN), 31 pins output (NPN) ;	Pins: 31 pins input(NPN), 31 pins output(NPN);	Pins: 32 pins input(NPN), 31 pins output(NPN);	Pins: 32 pins input(NPN), 31 pins output(NPN);
Body Reserved Signal Line		12pin(aviation plug, prefabricated cable length 0.55m)	12pins (aviation plug)	12pins (aviation plug)	12pin (solder connected aviation plug)	12pin (solder connected aviation plug)	24pins (aviation plug)	24pins (aviation plug)	26pin (solder connected aviation plug)	26pin (solder connected aviation plug)	24pins (aviation plug)	24pins (aviation plug)
Pneumatic tube		1*Φ6	1*Φ6	4*Φ4	1*Φ8	-	2*Φ8	2*Φ8	2*Φ10	4*Φ10(G1/4)quick connector for trachea	2*Φ8	2*Φ8
Battery capacity		0.8kVA	1.56kVA	1.56kVA	3.8kVA	3.8kVA	5.6kVA	5.62kVA	7.5kVA	18.5kVA	18.5kVA	22KVA
Rated power /Voltage /Current		0.6kW/Single PhaseAC220V 50HZ/3.2A	1.25kW/Single PhaseAC220V 50HZ/6.5A	1.25kW/Single PhaseAC220V 50HZ/6.5A	3kW/3Phases AC380V 50HZ/5.4A	3kW/3Phases AC380V 50HZ/5.4A	4.3kW/3Phases AC380V/8.1A	4.5kW/3Phases 380V/8.1A	5.5kW/3Phases AC380V 50HZ/10.8A	15kW/3Phases AC380V/25A	15KW/3Phases AC380V/25A	17.5KW/3Phases AC380V/31A
Body/Electric Cabinet Protection Level		IP54/IP53	IP54/IP53	IP67/IP54	IP54 (robot arm IP65) /IP53	IP54 (robot arm IP67) /IP53	IP54/IP53	IP54/IP53	IP54 (robot arm IP65) /IP53	IP54/IP53	IP54/IP53	IP54/IP53
Installation method		Ground/Upside down/Side mount	Ground/Upside down/Side mount	Ground/Upside down/Side mount/Install in any direction	Ground/Upside down/Side mount	Ground	Ground/Upside down	Ground/Upside down/Side mount	Ground	Ground	Ground	Ground
Machine/power box weight		27kg/43kg	55.5kg/44kg	52kg/38kg	196kg/99kg	215kg/99kg	280kg/91kg	280kg/91kg	750kg/180kg	1320kg/190kg	1150kg/160kg	2400kg/160kg

HSR-BR/CR/Co Series

Multi joint robot performance parameters



Product model		HSR-BR312	HSR-BR316	HSR-BR610	HSR-BR612	HSR-BR616	HSR-BR625	HSR-CR605	HSR-CR607	HSR-Co605	HSR-Co610	HSR-Co616
Degree of freedom		3	3	6	6	6	6	6	6	6	6	6
Payload		12Kg	16Kg	10Kg	12Kg	16Kg	25Kg	5Kg	7kg	5kg	10kg	16kg
Maximum operate radius		1109mm	980mm	1310mm	1100mm	1600mm	1849.5mm	650mm	650mm	800mm	1150mm	850mm
Repeat positioning accuracy		±0.05mm	±0.05mm	±0.05mm	±0.05mm	±0.05mm	±0.05mm	±0.02mm	±0.02mm	±0.02mm	±0.04mm	±0.04mm
Range of motion	J1	-178°/-2°	-178°/-2°	±155°	±155°	±154°	±155°	180°	-180°/+180°	±180°	±180°	±180°
	J2	-70°/+250°	+130°/+430°	-178°/-2°	-178°/-2°	-178°/-2°	-178°/-2°	-190°/+40°	-190°/+40°	- 220°/ + 40°	- 220°/ + 40°	- 220°/ + 40°
	J3	±161°	±161°	+120°/+420°	+120°/+420°	+103°/+437°	+128°/+412°	-60°/+240°	-60°/+240°	- 55°/ + 235°	- 55°/ + 235°	- 55°/ + 235°
	J4	-	-	±190°	±360°	±360°	±360°	±180°	±180°	±180°	±180°	±180°
	J5	-	-	±165°	±161°	±161°	±131°	±180°	±180°	±130°	±130°	±130°
	J6	-	-	±360°	±360°	±360°	±360°	±360°	±360°	±180°	±180°	±180°
Maximum speed	J1	250°/s, 4.36 rad/s	217°/s, 3.78rad/s	360°/s, 6.28rad/s	360°/s, 6.28rad/s	236°/s, 4.12rad/s	233°/s, 4.06rad/s	240°/s / 4.18rad/s	200°/s, 3.49rad/s	120°/s, 2.09rad/s	120°/s,2.09rad/s	120°/s,2.09rad/s
	J2	360°/s, 6.28rad/s	357°/s, 6.23rad/s	250°/s, 4.36 rad/s	250°/s, 4.36 rad/s	217°/s, 3.78rad/s	235°/s, 4.10ad/s	210°/s / 3.66rad/s	180°/s, 3.14rad/s	120°/s, 2.09rad/s	120°/s,2.09rad/s	120°/s,2.09rad/s
	J3	360°/s, 6.28rad/s	360°/s, 6.28rad/s	360°/s, 6.28rad/s	360°/s, 6.28rad/s	357°/s, 6.23rad/s	285°/s, 4.97rad/s	270°/s /4.71rad/s	200°/s, 3.49rad/s	150°/s, 2.62rad/s	150°/s,2.62rad/s	150°/s,2.62rad/s
	J4	-	-	480°/s, 8.38 rad/s	480°/s, 8.38 rad/s	443°/s, 7.72rad/s	487°/s, 8.49rad/s	375°/s / 6.54rad/s	300°/s, 5.23rad/s	240°/s, 4.19rad/s	225°/s,3.93rad/s	180°/s,3.14rad/s
	J5	-	-	360°/s, 6.28rad/s	360°/s, 6.28 rad/s	360°/s, 6.28rad/s	487°/s, 8.49rad/s	300°/s / 5.23rad/s	300°/s, 5.23rad/s	240°/s, 4.19rad/s	225°/s,3.93rad/s	180°/s,3.14rad/s
	J6	-	-	450°/s, 7.85 rad/s	450°/s, 7.85 rad/s	450°/s, 7.85rad/s	487°/s, 8.49rad/s	600°/s / 10.46rad/s	375°/s, 6.54rad/s	240°/s, 4.19rad/s	225°/s,3.93rad/s	180°/s,3.14rad/s
Maximum speed	J4	0.85kgm2 (J3)	0.85kgm ² (J3)	0.15kgm ²	0.52kgm ²	0.52kgm ²	2.0kgm ²	0.12kgm ²	0.12kgm ²	0.3kgm2	0.96kgm ²	1.31kgm ²
	J5	-	-	0.42kgm ²	0.85kgm ²	0.85kgm ²	3.7kgm ²	0.23kgm ²	0.23kgm ²	0.3kgm2	0.96kgm ²	1.31kgm ²
	J6	-	-	0.42kgm ²	0.42 kgm ²	0.99kgm ²	3.7kgm ²	0.31kgm ²	0.31kgm ²	0.3kgm2	0.96kgm ²	1.31kgm ²
Allowable moment of inertia	J4	28Nm (J3)	28Nm (J3)	12.7Nm	20.3Nm	20.3Nm	40.9Nm	6.8Nm	6.8Nm	11.5Nm	30Nm	44Nm
	J5	-	-	20.4Nm	28.0Nm	28.0Nm	79.8Nm	13.3Nm	13.3Nm	11.5Nm	30Nm	44Nm
	J6	-	-	20.4Nm	20.4Nm	34.0Nm	76.5Nm	21.56Nm	21.56Nm	11.5Nm	30Nm	44Nm
Applicable environment	Temperature	0~45℃	0~45℃	0~45°	0~45°	0~45°	0~45°	0~50℃	0~50℃	0~50℃	0~50℃	0~50℃
	Humidity	20%~80%	20%~80%	20%~80%	20%~80%	20%~80%	20%~80%	20%~80%	20%~80%	20%~80%	20%~80%	20%~80%
	Other	Avoid contact with inflammable or corrosive gas and liquid, Stay away from electronic noise(plasma)					Avoid contact with inflammable or corrosive gas and liquid, Stay away from electronic noise(plasma)					
Teach pendant cable length		8m	8m	8m	8m	8m	8m	8m	8m	8m	8m	8m
Machine- Power box connect cable length		6m	6m	3m	6m	6m	6m	3m	3m	3m	3m	3m
I/O parameters		Pins: 32 pins input(NPN), 32 pins output (NPN) ;					Pins: 32 pins input(NPN), 32 pins output (NPN) ;	Pins: 32 pins input(NPN), 32 pins output (NPN) ;	Pins: 32pins input, 32 pins output	Pins: 16 pins input, 16 pins output	Pins: 16 pins input, 16 pins output	Pins: 16 pins input, 16 pins output
Body Reserved Signal Line		12pins (aviation plug)	12pins (aviation plug)	12pins (aviation plug)	12pins (aviation plug)	24pins (aviation plug)	24pins (aviation plug)	8pins (aviation plug)	8pins (aviation plug)	6pins (Hoomer connector)	6pins (Hoomer connector)	6pins (Hoomer connector)
Pneumatic tube		2*Φ8	2*Φ8	1*Φ6	1*Φ8	2*Φ8	2*Φ8	1*Φ6	1*Φ6	-	-	-
Battery capacity		2kVA	2.45kVA	2.55kVA	2.55kVA	3.68kVA	5.6kVA	1.3KVA	1.3KVA	2KVA	2KVA	2KVA
Rated power/Voltage/Current		1.68kW/Single PhaseAC220V/7.6A	2.28kW/Single PhaseAC220V/10.4A	2.04kW/Single PhaseAC220V/9.3A	2.1kW/Single PhaseAC220V /9.4A	2.95kW/Single PhaseAC220V/13.4A	4.3kW/3Phases 380V/8.1A	1.1kW/Single Phase AC220V/5A	1.1kW/Single Phase AC220V/5A	1.2kW/Single Phase AC220V/5A	1.2kW/Single Phase AC220V/6A	1.2kW/Single Phase AC220V/6A
Body/Electric Cabinet Protection Level		IP54/IP53	IP67/IP54	IP54 (robot arm IP67) /IP53	IP54 (robot arm IP67) /IP53	IP67/IP54	IP54 (front end IP67) /IP53	IP67/IP20	IP67/IP20	IP54	IP54	IP54
Installation method		Ground/Upside down/Side mount	Ground/Upside down/Side mount	Ground/Upside down/Side mount	Ground/Upside down/Side mount	Ground	Ground/Upside down/Side mount/ Install in any direction	Ground/Upside down	Ground/Upside down	Ground/Upside down/Side mount/Install in any direction	Ground/Upside down/Side mount/Install in any direction	Ground/Upside down/Side mount/Install in any direction
Machine/power box weight		44kg/33.5kg	64kg/33.5kg	61kg/38kg	65kg/38kg 63kg/38kg	124.5kg/47kg	210kg/91kg	26kg/15kg	26kg/15kg	25kg/18kg	41kg/18kg	38.5kg/18kg

HSR-JH/MD/SR series

Multi joint robot performance parameters



Product model		HSR-JH605	HSR-JH615	HSR-JH620	HSR-MD410	HSR-MD4110	HSR-MD4130	HSR-SR3400	HSR-SR6600	HSR-SR5700	HSR-SR10600 SR10800	HSR-SR20800 SR201000
Degree of freedom		6	6	6	4	4	4	4	4	4	4	4
Payload		5Kg	15Kg	20Kg	10Kg	110kg	130kg	3kg	6Kg	5Kg	10kg	20Kg
Maximum operate radius		1441mm	2000mm	1802mm	1510mm	2500mm	3150mm	400mm	600mm	700mm	600mm 800mm	800mm 1000mm
Repeat positioning accuracy		±0.06mm	±0.05mm	±0.05mm	±0.08mm	±0.3mm	±0.3mm	±0.01mm	±0.02mm	±0.02mm	±0.03mm ±0.035mm	±0.04mm
Range of motion	J1	±150°	±165°	±165°	±170°	±180°	±180°	±132°	±132°	±132°	±135°	±132°
	J2	-145°/+60°	-175°/+75°	-175°/+75°	-140°/0°	-47°/+98°	-44°/+100°	±135°	±150°	±150°	±155°	±152° ±155°
	J3	+30°/+270°	-15°/+260°	-15°/+260°	-30°/+155°	-20°/+112°	-15°/+121°	0/-150mm	0/-200mm	0/-200mm	0-300mm	0-420mm
	J4	±120°	±170°	±170°	±360°	±360°	±360°	±360°	±360°	±360°	±360°	±360°
	J5	-110°/+140°	±180°	±180°	-	-	-	-	-	-	-	-
	J6	±360°	±400°	±400°	-	-	-	-	-	-	-	-
Maximum speed	J1	198°/s, 3.46rad/s	220°/s, 3.84rad/s	220°/s, 3.84rad/s	315°/s, 5.49rad/s	170°/s,2.96rad/s	128°/s, 2.23rad/s	530°/s,9.24rad/s	375°/s,6.54rad/s	335°/s,5.84rad/s	600°/s,10.47rad/s 430°/s,7.50rad/s	530°/s,9.25rad/s 420°/s,7.33rad/s
	J2	198°/s, 3.46rad/s	200°/s, 3.49rad/s	200°/s, 3.49rad/s	315°/s, 5.49rad/s	159°/s,2.77rad/s	126°/s, 2.19rad/s	700°/s,12.21rad/s	600°/s,10.46rad/s	600°/s,10.46rad/s	650°/s,11.34rad/s	580°/s,10.12rad/s
	J3	198°/s, 3.46rad/s	220°/s, 3.84rad/s	220°/s, 3.84rad/s	220°/s, 3.84rad/s	166°/s,2.9rad/s	135°/s, 2.35rad/s	1065mm/s	1111mm/s	1111mm/s	2200mm/s	2150mm/s
	J4	300°/s, 5.23rad/s	330°/s, 5.75rad/s	330°/s, 5.75rad/s	360°/s, 6.28rad/s	429°/s,7.48rad/s	300°/s, 5.23rad/s	2600°/s,43.35rad/s	2000°/s,34.88rad/s	2000°/s,34.88rad/s	2250°/s,39.26rad/s	1700°/s,29.67rad/s
	J5	300°/s, 5.23rad/s	420°/s, 7.33rad/s	420°/s, 7.33rad/s	-	-	-	-	-	-	-	-
	J6	300°/s, 5.23rad/s	600°/s, 10.47rad/s	600°/s, 10.47rad/s	-	-	-	-	-	-	-	-
Maximum speed	J4	0.035kgm ²	1kgm ²	1kgm ²	-	-	-	-	-	-	-	-
	J5	0.3kgm ²	2.2kgm ²	2.2kgm ²	-	-	-	-	-	-	-	-
	J6	0.3kgm ²	2.8kgm ²	2.8kgm ²	0.25kgm ²	7kgm ²	-	0.05kgm ² /0.005kgm ²	0.12kgm ² /0.01kgm ²	0.12kgm ² /0.01kgm ²	0.32/0.02kgm ²	0.05/0.8kgm ²
Allowable moment of inertia	J4	15Nm	32Nm	32Nm	-	-	-	-	-	-	-	-
	J5	35Nm	52Nm	52Nm	-	-	-	-	-	-	-	-
	J6	35Nm	60Nm	60Nm	42Nm	202Nm	-	3.29Nm	4.23Nm	4.23Nm	8.83Nm	21.86Nm
Applicable environment	Temperature	0~45°	0~45°	0~45°	0~45°C	0~45°	0~45°C	0~45°C	0~45°C	0~45°C	0~45°C	0~45°C
	Humidity	20%~80%	20%~80%	20%~80%	20%-80%	20%~80%	20%-80%	20%-80%	20%-80%	20%-80%	20%-80%	20%-80%
	Other	Avoid contact with inflammable or corrosive gas and liquid, Stay away from electronic noise(plasma)										
Teach pendant cable length		8m	8m	8m	8m	8m	8m	8m	8m	8m	8m	8m
Machine- Power box connect cable length		5m	8m	8m	6m	8m	8m	3m	3m	3m	3m	3m
I/O parameters		Pins: 32 pins input(NPN), 31 pins output(NPN);	Pins: 32 pins input(NPN), 30pins output(NPN);	Pins: 32 pins input(NPN), 30pins output(NPN);	Pins: 32 pins input(NPN), 32pins output(NPN);	Pins: 32 pins input(NPN), 31pins output(NPN);	Pins: 32 pins input(NPN), 31pins output(NPN);	Pins: 32 pins input(both NPN and PNP), 32pins output(NPN);	Pins: 32 pins input(both NPN and PNP), 32pins output(NPN);	Pins: 32 pins input(both NPN and PNP), 32pins output(NPN);	Pins: 32 pins input(both NPN and PNP), 32pins output(NPN);	Pins: 32 pins input(both NPN and PNP), 32pins output(NPN);
Body Reserved Signal Line		-	16pin (solder connected aviation plug)	16pin (solder connected aviation plug)	12pin (solder connected avaition plug)	12pin (solder connected avaition plug)	-	12pins (aviation plug)	12pins (aviation plug)	12pins (aviation plug)	12pins (aviation plug)	12pins (aviation plug)
Pneumatic tube		-	3*Φ8	3*Φ8	2*Φ8	4*Φ10	2*Φ12	3*Φ6	3*Φ6	3*Φ6	3*Φ6	2*Φ6+2*Φ8
Battery capacity		2.5kVA	6.9kVA	6.9kVA	4kVA	15kVA	15kVA	0.75kVA	0.8kVA	0.8kVA	3kVA	3kVA
Rated power /Voltage /Current		2kW/Single Phase AC220V 50HZ/10.8A	5kW/3Phases AC380V/9.3A	5kW/3Phases AC380V/9.3A	3kW/2Phases AC220V 50HZ/15A	12kW/3Phases AC380V 50HZ/30A	12kW/3Phases AC380V/30A	0.55kW/Single Phase AC220V 50HZ/3A	0.62kW/Single Phase AC220V 50HZ/3.2A	0.62kW/Single Phase AC220V 50HZ/3.2A	15kW/Single Phase AC220V 50HZ/4A	1.5kW/Single Phase AC220V 50HZ/4A
Body/Electric Cabinet Protection Level		IP50/IP50	IP54 (robot arm IP67) /IP53	IP54 (robot arm IP67) /IP53	IP54/IP20	IP54/IP53	IP54/IP53	IP54/IP20	IP54/IP20	IP54/IP20	IP54/IP20	IP54/IP20
Installation method		Ground/Upside down/Side mount	Ground/Upside down/Side mount	Ground/Upside down/Side mount	Ground	Ground	Ground	Ground/Desktop mount	Ground/Desktop mount	Ground/Desktop mount	Ground/Desktop mount	Ground/Desktop mount
Machine/power box weight		196kg/50kg	295kg/90kg	280kg/90kg	140kg/15kg	810kg	1500kg/约160kg	17.5kg/10.65kg	21.5kg/10.65kg	22.5kg/10.65kg	32kg/10.65kg 35kg/10.65kg	50kg/10.65kg 53kg/10.65kg

HSR-JR603/JR605

Six axis joint Robot series

Introduction

HSR-JR603/JR605 is a small multi-purpose robot of Huashu, which meets the high requirements of "high precision, light weight, and high speed" of 3C production. The whole machine adopts lightweight design, small size, flexible installation method, and adopts independent research and development of core components. It has the advantages of high performance and low cost. It is widely used in fields such as glue coating, handling, sorting, and assembly.

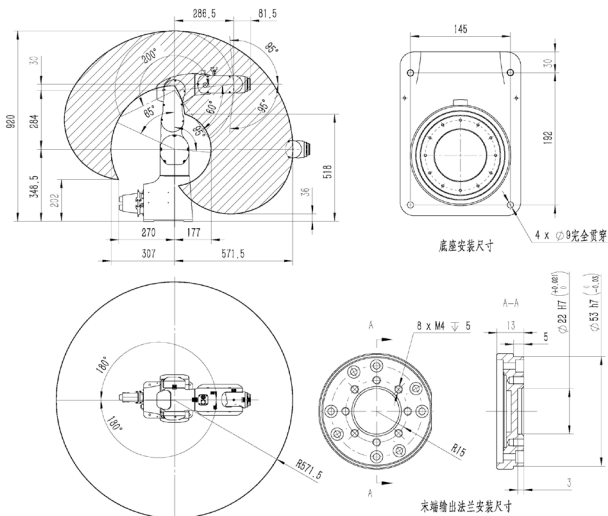


HSR-JR603

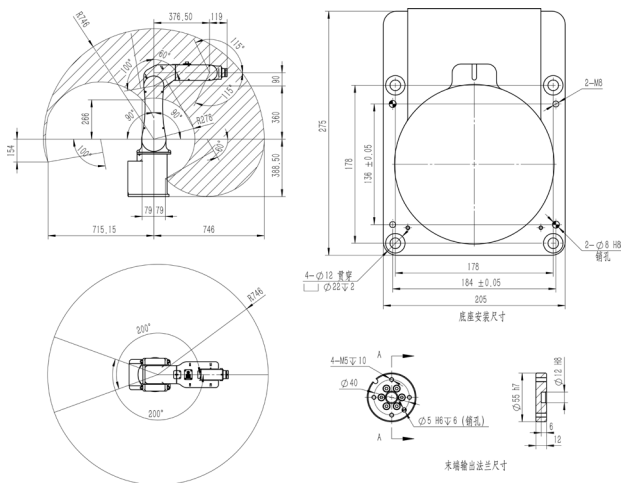
HSR-JR605

Product model		HSR-JR603	HSR-JR605
Degree of freedom		6	6
Payload		3Kg	5kg
Maximum operate radius		571.5mm	746mm
Repeat positioning accuracy		±0.02mm	±0.02mm
Range of motion	J1	±180°	±200°
	J2	-155°/+5°	-180°/0°
	J3	-20°/+240°	+80°/+240°
	J4	±180°	±180°
	J5	±95°	±115°
	J6	±360°	±360°
Maximum speed	J1	300°/s, 5.23rad/s	370°/s, 6.46 rad/s
	J2	262.5°/s, 4.58rad/s	300°/s, 5.24 rad/s
	J3	262.5°/s, 4.58rad/s	375°/s, 6.54rad/s
	J4	300°/s, 5.23rad/s	392°/s, 6.84 rad/s
	J5	262.5°/s, 4.58rad/s	370°/s, 6.46 rad/s
	J6	480°/s, 8.27rad/s	600°/s, 10.47 rad/s
Allowable moment of inertia	J6	0.04kg·m ²	0.1kg·m ²
	J5	0.05kg·m ²	0.36kg·m ²
	J4	0.05kg·m ²	0.5kg·m ²
Allowable torque	J6	6.4Nm	8Nm
	J5	6.4Nm	16Nm
	J4	12.7Nm	18Nm
Applicable environment	Temperature	0~45°	0~45°C
	Humidity	20%~80%	20%-80%
	Other	Avoid contact with inflammable or corrosive gas and liquid, Stay away from electronic noise(plasma)	
Teach pendant cable length		8m	8m
Machine- Power box connect cable length.		3m	3m
I/O parameters		Pins: 32 pins input(NPN), 31 pins output(NPN);	
Body Reserved Signal Line		12pin(aviation plug, prefabricated cable length 0.55m)	12pins (aviation plug)
Pneumatic tube		1"Φ6	1"Φ6
Battery capacity		0.8kVA	1.56kVA
Rated power / voltage / current		0.6kW/Single PhaseAC220V 50HZ/3.2A	1.25kW/Single PhaseAC220V 50HZ/6.5A
Body/Electric Cabinet Protection Level		IP54/IP53	IP54/IP53
Installation method		Ground/Upside down/Side mount	Ground/Upside down/Side mount
Machine/power box weight		27kg/43kg	55.5kg/44kg

HSR-JR603 Operation Parameter



HSR-JR605 Operation Parameter

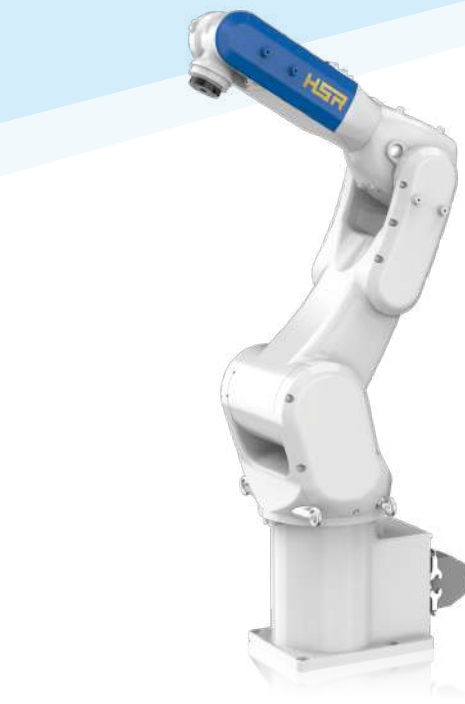


HSR-JR607

Six axis joint Robot series

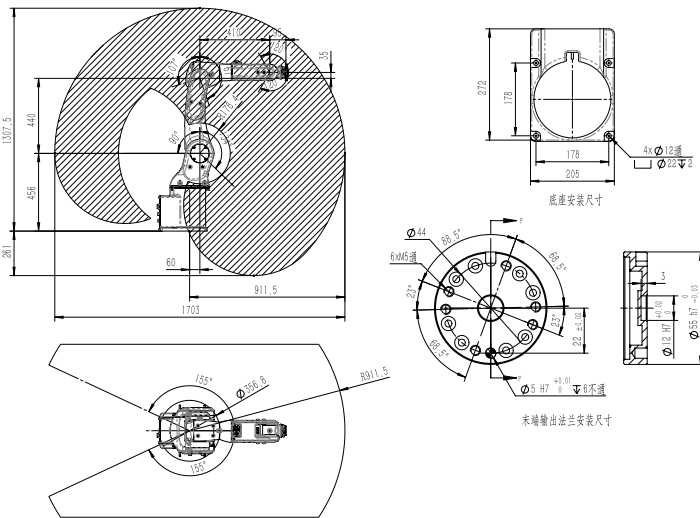
Introduction

HSR-JR607 will be designed as another small multi-purpose six-joint robot of Huashu Robot. It has compact structure, small size, light weight, high joint speed, fast dynamic response, higher protection level, and can easily deal with various environments with water. This six-axis robot is mainly aimed at the assembly of new energy and consumer electronic components, and is positioned as a high-speed and high-precision assembly robot in the 3C industry.



Product model		HSR-JR607
Degree of freedom		6
Payload		7Kg
Maximum operate radius		911.5mm
Repeat positioning accuracy		±0.02mm
Range of motion	J1	±155°
	J2	-180°/+44°
	J3	-17°/+251°
	J4	±180°
	J5	±120°
	J6	±360°
Maximum speed	J1	450°/s, 7.85rad/s
	J2	360°/s, 6.28rad/s
	J3	445.7°/s, 7.78rad/s
	J4	487.5°/s, 8.51rad/s
	J5	487.5°/s, 8.51rad/s
	J6	487.5°/s, 8.51rad/s
Allowable moment of inertia	J6	0.17kg·m ²
	J5	0.52kg·m ²
	J4	0.87kg·m ²
Allowable torque	J6	13.4Nm
	J5	18.1Nm
	J4	21.5Nm
Applicable environment	Temperature	0~45°
	Humidity	Normal below 75%RH
	Other	Avoid contact with inflammable or corrosive gas and liquid, Stay away from electronic noise(plasma)
Teach pendant cable length		8m
Machine- Power box connect cable length.		3m
I/O parameters		Pins: 32 pins input(NPN), 31 pins output(NPN);
Body Reserved Signal Line		12pins (aviation plug)
Pneumatic tube		4"Φ4
Battery capacity		1.56kVA
Rated power / voltage / current		1.25kW/Single PhaseAC220V 50HZ/6.5A
Body/Electric Cabinet Protection Level		IP67/IP54
Installation method		Ground/Upside down/Side mount/Install in any direction
Machine/power box weight		52kg/38kg

Operation Parameter



HSR-JR612

Six axis joint Robot series

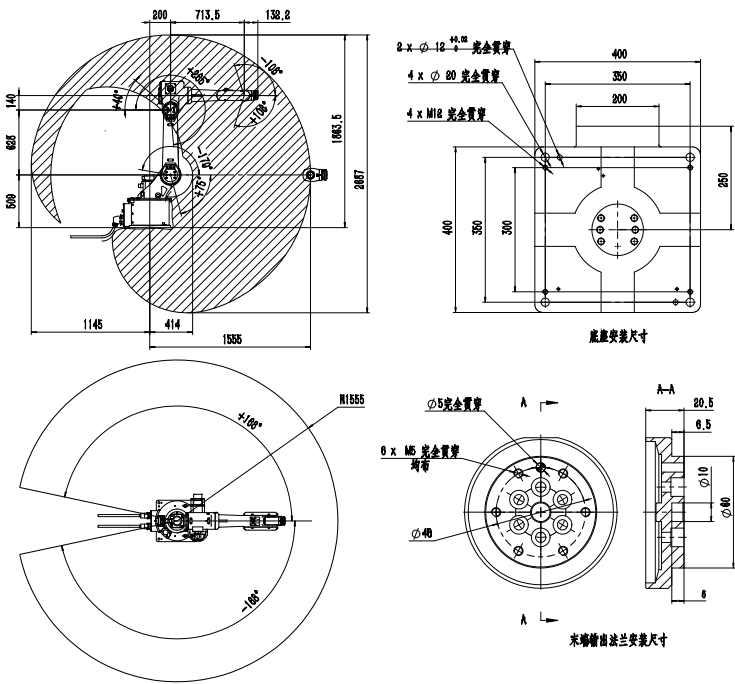
Introduction

The HSR-JR612 is a high performance universal small load joint robot. Thanks to the high rigid arm, independently developed high performance servo motor and control technology, it can realize the bigger arm stretching and bigger load compared to other robots of the same level. It has features such as high movement speed, high repeated positioning accuracy, which is especially suitable for polishing, handling and welding etc.



Product model		HSR-JR612
Degree of freedom		6
Payload		12Kg
Maximum operate radius		1555mm
Repeat positioning accuracy		±0.06mm
Range of motion	J1	±168°
	J2	-170°/+75°
	J3	+40°/+265°
	J4	±180°
	J5	±108°
	J6	±360°
Maximum speed	J1	176°/s, 3.07rad/s
	J2	176°/s, 3.07rad/s
	J3	176°/s, 3.07rad/s
	J4	426°/s, 7.43rad/s
	J5	270°/s, 4.71rad/s
	J6	480°/s, 8.37rad/s
Allowable moment of inertia	J6	0.17kg·m ²
	J5	1.2kg·m ²
	J4	1.2kg·m ²
Allowable torque	J6	15Nm
	J5	35Nm
	J4	35Nm
Applicable environment	Temperature	0~45°
	Humidity	20%~80%
	Other	Avoid contact with inflammable or corrosive gas and liquid, Stay away from electronic noise(plasma)
Teach pendant cable length		8m
Machine- Power box connect cable length.		3m
I/O parameters		Pins: 32 pins input(NPN), 31 pins output(NPN);
Body Reserved Signal Line		12pin (solder connected aviation plug)
Pneumatic tube		-
Battery capacity		3.8kVA
Rated power / voltage / current		3kW/3Phases AC380V 50HZ/5.4A
Body/Electric Cabinet Protection Level		IP54 (robot arm IP67)/IP53
Installation method		Ground
Machine/power box weight		215kg/99kg

Operation Parameter

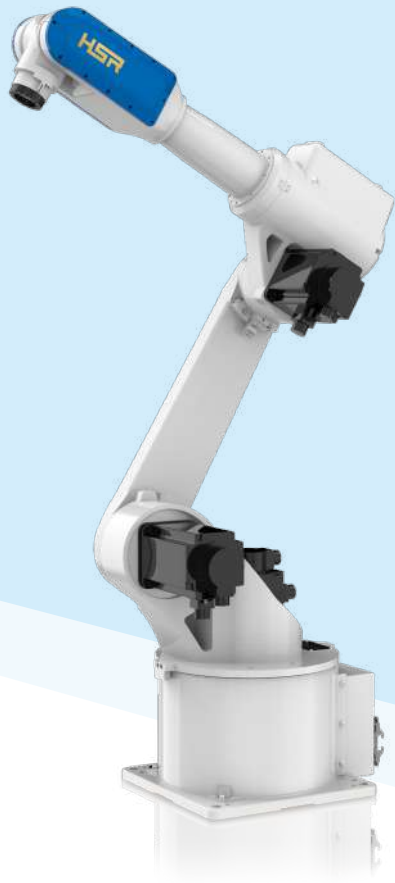


HSR-JM612

Six axis joint Robot series

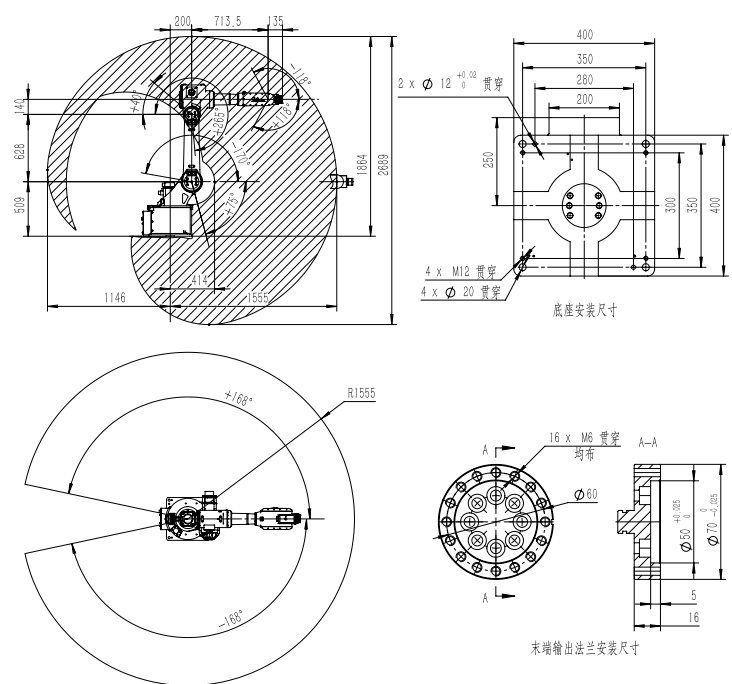
Introduction

In order to solve the problem in 3C device (electronic device) polishing that the conventional robots can't adapt to the repeated impact with big load, dusty (dry grinding) and humid (water grinding) environment, and create continuous and stable production capacity for customers, Huashu HSR-JM612 was born. This model is specifically optimized for the grinding process, bringing the perfect 3C grinding solution for you.



Product model		HSR-JM612
Degree of freedom		6
Payload		12Kg
Maximum operate radius		1555mm
Repeat positioning accuracy		±0.06mm
Range of motion	J1	±168°
	J2	-170°/+75°
	J3	+40°/+265°
	J4	±180°
	J5	±118°
	J6	±360°
Maximum speed	J1	176°/s, 3.07rad/s
	J2	176°/s, 3.07rad/s
	J3	176°/s, 3.07rad/s
	J4	426°/s, 7.43rad/s
	J5	270°/s, 4.71rad/s
	J6	480°/s, 8.37rad/s
Allowable moment of inertia	J6	0.17kg·m ²
	J5	1.2kg·m ²
	J4	1.2kg·m ²
Allowable torque	J6	15Nm
	J5	35Nm
	J4	35Nm
Applicable environment	Temperature	0~45°
	Humidity	20%~80%
	Other	Avoid contact with inflammable or corrosive gas and liquid, Stay away from electronic noise(plasma)
Teach pendant cable length		8m
Machine- Power box connect cable length.		6m
I/O parameters		Pins: 32 pins input(NPN), 31 pins output(NPN);
Body Reserved Signal Line		12pin (solder connected aviation plug)
Pneumatic tube		-
Battery capacity		3.8kVA
Rated power / voltage / current		3kW/3Phases AC380V 50HZ/5.4A
Body/Electric Cabinet Protection Level		IP54 (robot arm IP67)/IP53
Installation method		Ground
Machine/power box weight		215kg/99kg

Operation Parameter



HSR-JR618

Six axis joint Robot series

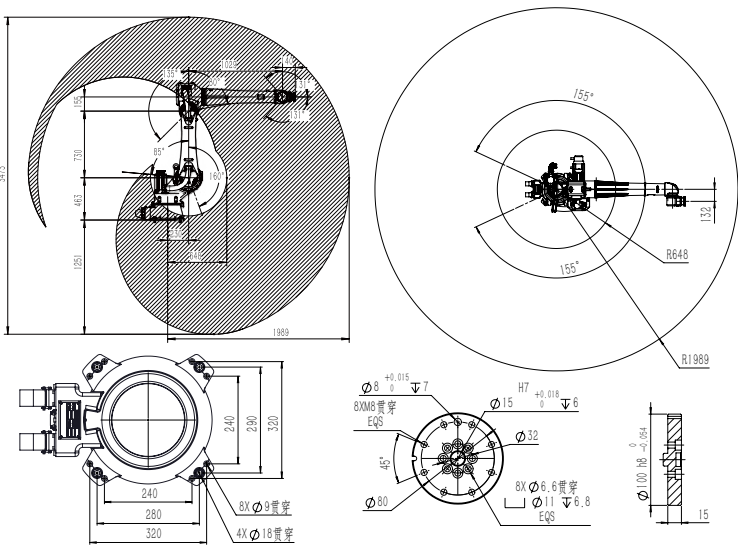
Introduction

HSR-JR618 has the advantages of high precision, strong acceleration ability, good rigidity, protection grade up to IP67, and the wrist structure is compact, the range of motion is larger than the traditional wrist, can easily deal with machine tool loading and unloading, palletizing, assembly, grinding ,welding and other industries application market.



Product model		HSR-JR618
Degree of freedom		6
Payload		18Kg
Maximum operate radius		1989mm
Repeat positioning accuracy		±0.05mm
Range of motion	J1	±155°
	J2	-175°/+70°
	J3	+45°/+260°
	J4	±360°
	J5	±131°
	J6	±360°
Maximum speed	J1	233°/s, 4.06rad/s
	J2	141°/s, 2.46rad/s
	J3	248°/s, 4.33rad/s
	J4	360°/s, 6.28rad/s
	J5	487°/s, 8.5rad/s
	J6	487°/s, 8.5rad/s
Allowable moment of inertia	J6	2.0kg·m ²
	J5	3.7kg·m ²
	J4	1.2kg·m ²
Allowable torque	J6	40.9Nm
	J5	79.8Nm
	J4	35.0Nm
Applicable environment	Temperature	0~45°C
	Humidity	20%~80%
	Other	Avoid contact with inflammable or corrosive gas and liquid, Stay away from electronic noise(plasma)
Teach pendant cable length		8m
Machine- Power box connect cable length.		6m
I/O parameters		Pins: 32 pins input(NPN), 32 pins output (NPN) ;
Body Reserved Signal Line		24pins (aviation plug)
Pneumatic tube		2"Φ8
Battery capacity		5.6kVA
Rated power / voltage / current		4.3kW/3Phases 380V/8.1A
Body/Electric Cabinet Protection Level		IP54 (front end IP67) /IP53
Installation method		Ground/Upside down/Side mount/Install in any direction
Machine/power box weight		210kg/91kg

Operation Parameter

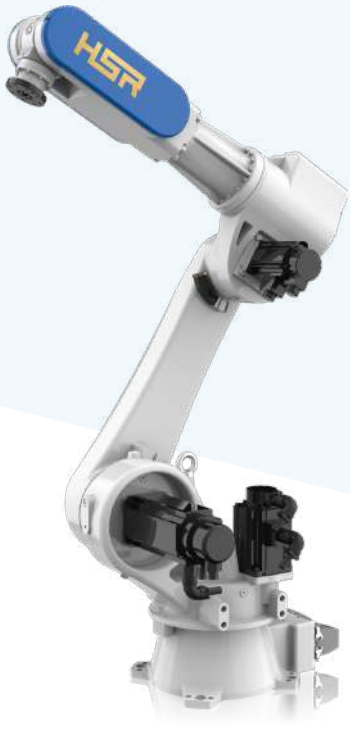


HSR-JR630

Six axis joint Robot series

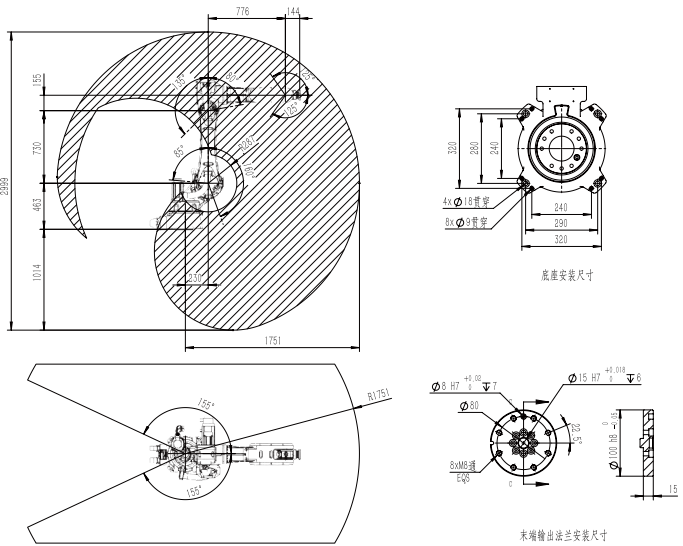
Introduction

The HSR-JR630 is designed with high precision. Through-hole structural optimization, it adopts advanced control system and servo drive, features with high accuracy, good acceleration, large movement range and high rigid, which makes it easily handle with the manufacture processing, assembly and welding etc.



Product model		HSR-JR630
Degree of freedom		6
Payload		30kg
Maximum operate radius		1751mm
Repeat positioning accuracy		±0.05mm
Range of motion	J1	±155°
	J2	-175°/+70°
	J3	+45°/+260°
	J4	±360°
	J5	±125°
	J6	±360°
Maximum speed	J1	233°/s, 4.06rad/s
	J2	141°/s, 2.46rad/s
	J3	248°/s, 4.33rad/s
	J4	356°/s, 6.22rad/s
	J5	386°/s, 6.74rad/s
	J6	487°/s, 8.5rad/s
Allowable moment of inertia	J6	0.8kg·m ²
	J5	3.3kg·m ²
	J4	8.7kg·m ²
Allowable torque	J6	30.7Nm
	J5	73.4Nm
	J4	140.4Nm
Applicable environment	Temperature	0°C~45°C
	Humidity	20~80%
	Other	Avoid contact with inflammable or corrosive gas and liquid, Stay away from electronic noise(plasma)
Teach pendant cable length		8m
Machine- Power box connect cable length.		6m
I/O parameters		Pins: 32 pins input(Both PNP and NPN)31 pins output (NPN) ;
Body Reserved Signal Line		24pins (aviation plug)
Pneumatic tube		2"Φ8
Battery capacity		5.62kVA
Rated power / voltage / current		4.5kW/3Phases 380V/8.1A
Body/Electric Cabinet Protection Level		IP54/IP53
Installation method		Ground/Upside down/Side mount
Machine/power box weight		280kg/91kg

Operation Parameter



HSR-JR650/JR680

Six axis joint Robot series

Introduction

The HSR-JR650/JR680 are designed to match against the same type of product internationally. Its performance is in the lead comparing with the counterparts. At the meantime it also considered the process requirement in handling, welding etc, which is particularly suitable for crucial working environment.

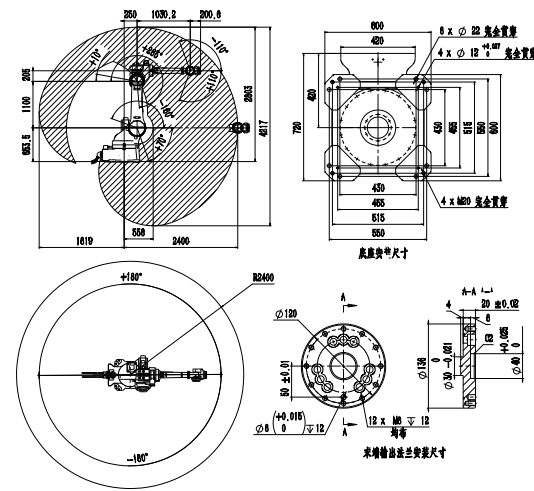


HSR-JR650

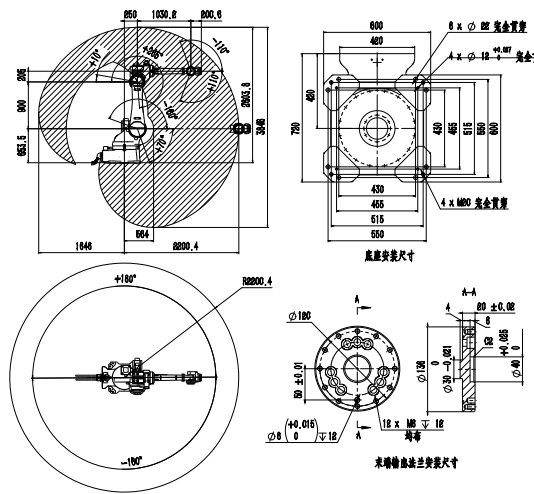
HSR-JR680

Product model		HSR-JR650	HSR-JR680
Degree of freedom		6	6
Payload		50kg	80kg
Maximum operate radius		2400mm	2200mm
Repeat positioning accuracy		±0.08mm	±0.07mm
Range of motion	J1	±180°	±180°
	J2	-160°/70°	-160°/70°
	J3	+10°/265°	+10°/265°
	J4	±360°	±360°
	J5	±105°	±105°
	J6	±360°	±360°
Maximum speed	J1	127°/s, 2.21rad/s	127°/s, 2.21rad/s
	J2	127°/s, 2.21rad/s	127°/s, 2.21rad/s
	J3	104°/s, 1.81rad/s	104°/s, 1.81rad/s
	J4	177°/s, 3.08rad/s	177°/s, 3.08rad/s
	J5	155°/s, 2.70rad/s	155°/s, 2.70rad/s
	J6	187°/s, 3.26rad/s	187°/s, 3.26rad/s
Allowable moment of inertia	J6	25kg·m²	25kg·m²
	J5	32.7kg·m²	32.7kg·m²
	J4	32.7kg·m²	32.7kg·m²
Allowable torque	J6	330Nm	330Nm
	J5	340Nm	340Nm
	J4	400Nm	400Nm
Applicable environment	Temperature	0~45°	0~45°
	Humidity	20%~80%	20%~80%
	Other	Avoid contact with inflammable or corrosive gas and liquid, Stay away from electronic noise(plasma)	
Teach pendant cable length		8m	8m
Machine- Power box connect cable length.		6m	6m
I/O parameters		Pins: 31 pins input(NPN), 31 pins output (NPN) ;	
Body Reserved Signal Line		26pin (solder connected aviation plug)	
Pneumatic tube		2*Φ10	2*Φ10
Battery capacity		7.5kVA	7.5kVA
Rated power / voltage / current		5.5kW/3Phases AC380V 50HZ/10.8A	
Body/Electric Cabinet Protection Level		IP54 (robot arm IP65) /IP53	IP54 (robot arm IP65) /IP53
Installation method		Ground	Ground
Machine/power box weight		750kg/180kg	720kg/180kg

HSR-JR650 Operation Parameter



HSR-JR680 Operation Parameter

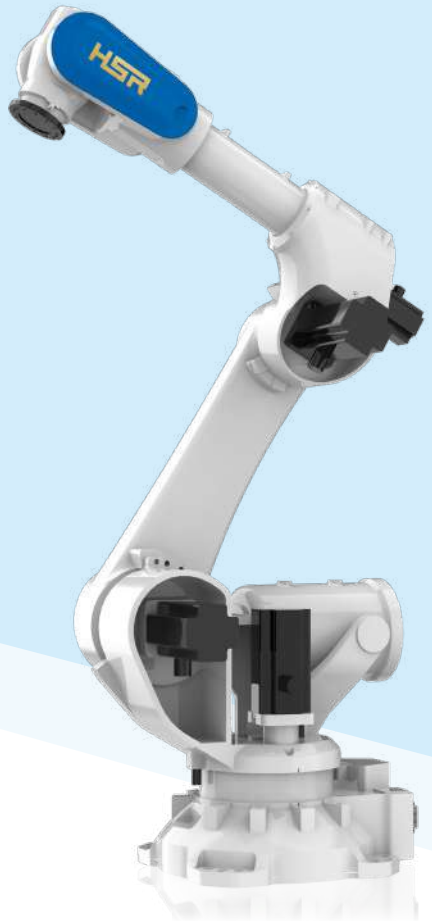


HSR-JR6150

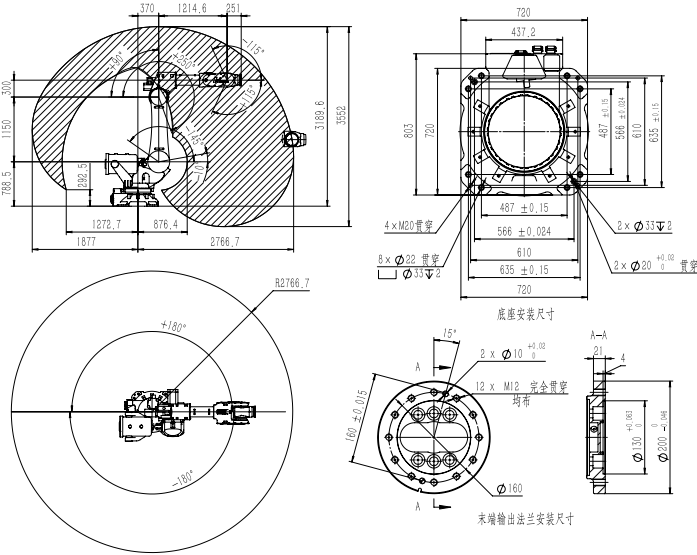
Six axis joint Robot series

Introduction

Excellent stability, strict control of parts and components, the ultimate pursuit for every step of the assembly process, more stable performance and higher reliability, at the same time, with simple design which makes maintenance easier.with a load of 150kg and a working range of up to 2.7m, it can grasp objects in a larger range, standing close and grasping far. Excellent control, using Huashu's third-generation controller, excellent motion control makes the operation more stable and faster.



Operation Parameter



Product model		HSR-JR6150
Degree of freedom		6
Payload		150Kg
Maximum operate radius		2766mm
Repeat positioning accuracy		±0.07mm
Range of motion	J1	±180°
	J2	-10°/-145°
	J3	+90°/+250°
	J4	±400°
	J5	±115°
	J6	±400°
Maximum speed	J1	107°/s,1.87rad/s
	J2	105°/s,1.83rad/s
	J3	105°/s,1.83rad/s
	J4	174.7°/s,3.05rad/s
	J5	99°/s,1.72rad/s
	J6	222°/s,3.87rad/s
Allowable moment of inertia	J6	25kg·m²
	J5	55kg·m²
	J4	55kg·m²
Allowable torque	J6	320Nm
	J5	600Nm
	J4	600Nm
Applicable environment	Temperature	0~45°
	Humidity	20%~80%
	Other	Avoid contact with inflammable or corrosive gas and liquid, Stay away from electronic noise(plasma)
Teach pendant cable length		8m
Machine- Power box connect cable length.		8m
I/O parameters		Pins: 31 pins input(NPN), 31 pins output(NPN);
Body Reserved Signal Line		26pin (solder connected aviation plug)
Pneumatic tube		4*Φ10(G1/4)quick connector for trachea
Battery capacity		18.5kVA
Rated power / voltage / current		15kW/3Phases AC380V/25A
Body/Electric Cabinet Protection Level		IP54/IP53
Installation method		Ground
Machine/power box weight		1320kg/190kg

HSR-JR6210

Six axis joint Robot series

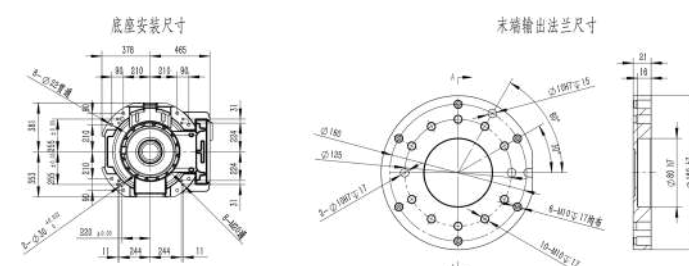
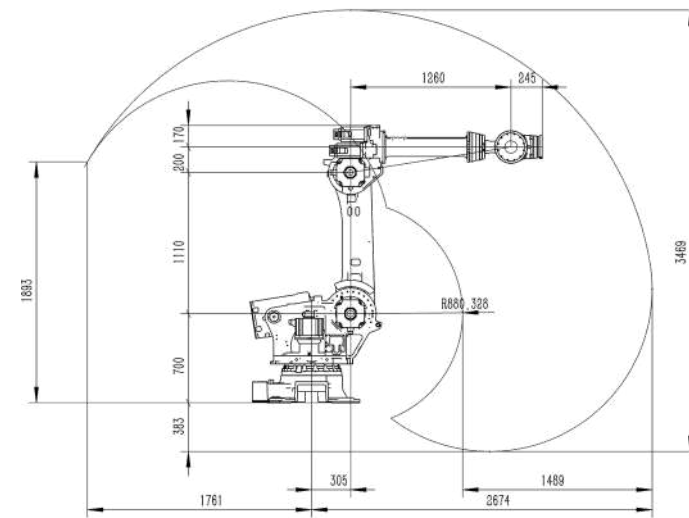
Introduction

The whole system of HSR-JR6210 has compact structure. The body adopts all-gear rigid transmission, has high repeatability accuracy, low failure rate, and easy operation. It has bus structure and is convenient to expand application, such as in loading and unloading, palletizing, spot welding, grinding and other occasions.



Product model		HSR-JR6210
Degree of freedom		6
Payload		210Kg
Maximum operate radius		2700mm
Repeat positioning accuracy		±0.07mm
Range of motion	J1	±180°
	J2	+77°/-59°
	J3	+80°/-90°
	J4	±180°
	J5	±120°
	J6	±360°
Maximum speed	J1	125°/s,2.18rad/s
	J2	115°/s,2.007rad/s
	J3	115°/s,2.007rad/s
	J4	155°/s,2.71rad/s
	J5	160°/s,2.8rad/s
	J6	220°/s,3.84rad/s
Allowable moment of inertia	J6	80Nm
	J5	199Nm
	J4	199Nm
Allowable torque	J6	706Nm
	J5	1268Nm
	J4	1268Nm
Applicable environment	Temperature	0-45℃
	Humidity	20%-80%
	Other	Avoid contact with inflammable or corrosive gas and liquid, Stay away from electronic noise(plasma)
Teach pendant cable length		8m
Machine: Power box connect cable length.		8m
I/O parameters		Pins: 32 pins input(NPN), 31 pins output(NPN);
Body Reserved Signal Line		24pins (aviation plug)
Pneumatic tube		2"Φ8
Battery capacity		18.5kVA
Rated power / voltage / current		15KW/3Phases AC380V/25A
Body/Electric Cabinet Protection Level		IP54/IP53
Installation method		Ground
Machine/power box weight		1150kg/160kg

Operation Parameter



HSR-JR6300/JR6500

Six axis joint Robot series

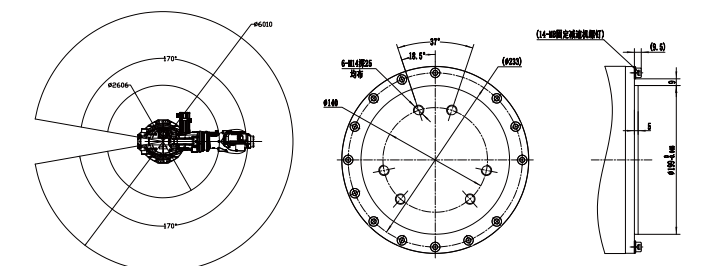
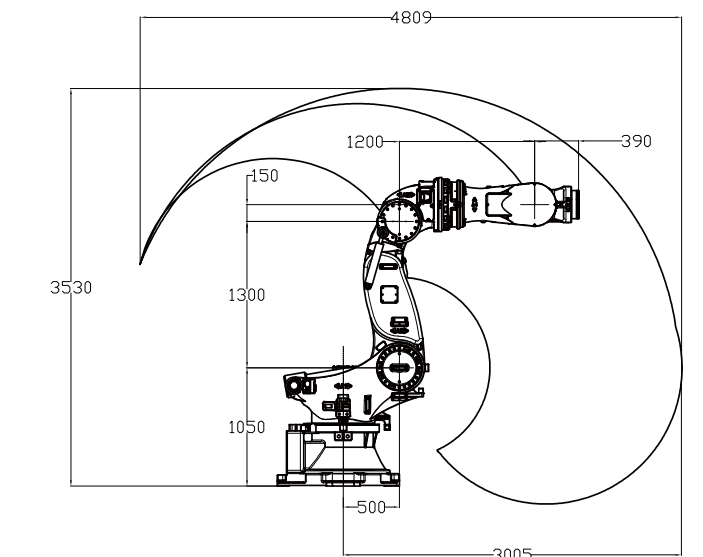
Introduction

HSR-JR6300/JR6500 belong to heavy-duty robots which are widely used in building materials, household, automotive, lithium battery and other industries. They have a large load capacity of 300-500KG, and the working range can reach 3m, with high precision and high reliability.



Product model		HSR-JR6300	HSR-JR6500
Degree of freedom		6	6
Payload		300kg	500kg
Maximum operate radius		3000mm	3000mm
Repeat positioning accuracy		±0.1mm	±0.1mm
Range of motion	J1	±180°	±180°
	J2	-145°/0°	-145°/0°
	J3	+20°/+195°	+20°/+195°
	J4	±145°	±145°
	J5	±105°	±105°
	J6	±360°	±360°
Maximum speed	J1	90°/s,1.571rad/s	55°/s,0.959rad/s
	J2	90°/s,1.571rad/s	55°/s,0.959rad/s
	J3	90°/s,1.571rad/s	55°/s,0.959rad/s
	J4	110°/s,1.959rad/s	110°/s,1.959rad/s
	J5	110°/s,1.959rad/s	110°/s,1.959rad/s
	J6	160°/s,2.792rad/s	160°/s,2.792rad/s
Allowable moment of inertia	J6	-	-
	J5	-	-
	J4	-	-
Allowable torque	J6	1176Nm	1176Nm
	J5	1568Nm	3136Nm
	J4	1960Nm	3136Nm
Applicable environment	Temperature	0-45℃	0-45℃
	Humidity	20%-80%	20%-80%
	Other	Avoid contact with inflammable or corrosive gas and liquid, Stay away from electronic noise(plasma)	
Teach pendant cable length		8m	8m
Machine- Power box connect cable length.		8m	8m
I/O parameters		Pins: 32 pins input(NPN), 31 pins output(NPN) ;	
Body Reserved Signal Line		24pins (aviation plug)	24pins (aviation plug)
Pneumatic tube		2"Φ8	2"Φ8
Battery capacity		22KVA	22KVA
Rated power / voltage / current		17.5KW/3Phases AC380V/31A	17.5KW/3Phases AC380V/31A
Body/Electric Cabinet Protection Level		IP54/IP53	IP54/IP53
Installation method		Ground	Ground
Machine/power box weight		2400kg/160kg	2400kg/160kg

Operation Parameter

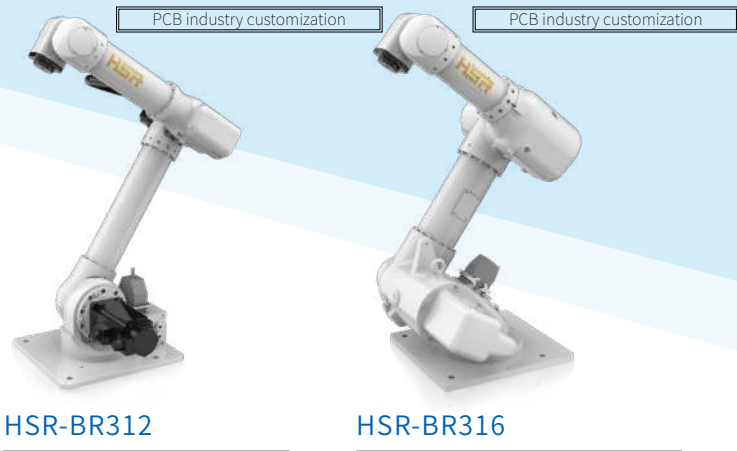


HSR-BR312/BR316

Three axis joint Robot series

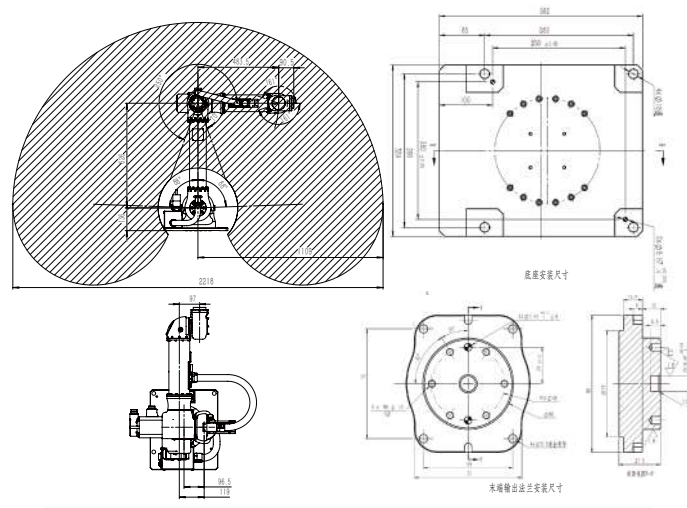
Introduction

HSR-BR312/BR316 is mainly developed for PCB board production industry to meet the needs of three-axis or four-axis feeding and discharging robot in PCB board production. Its compact structure, small size, light weight, high joint speed and fast dynamic response can effectively reduce the cost and waste caused by the application of six-axis robot.

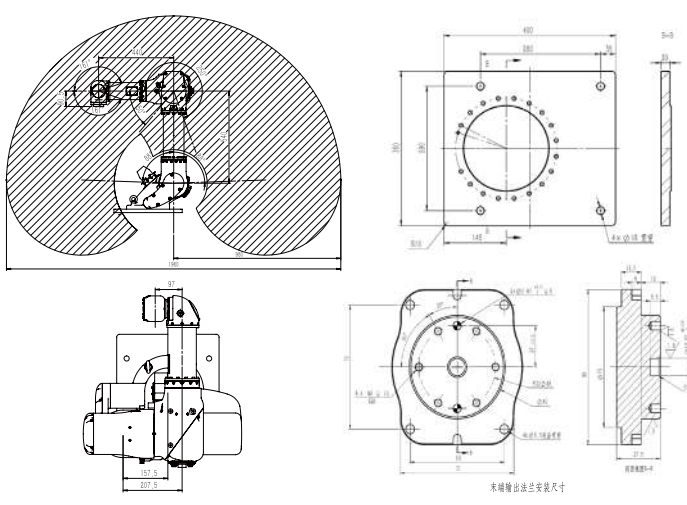


Product model		HSR-BR312	HSR-BR316
Degree of freedom		3	3
Payload		12Kg	16Kg
Maximum operate radius		1109mm	980mm
Repeat positioning accuracy		±0.05mm	±0.05mm
Range of motion	J1	-178°/-2°	-178°/-2°
	J2	-70°/+250°	+130°/+430°
	J3	±161°	±161°
	J4	-	-
	J5	-	-
	J6	-	-
Maximum speed	J1	250°/s, 4.36 rad/s	217°/s, 3.78rad/s
	J2	360°/s, 6.28rad/s	357°/s, 6.23rad/s
	J3	360°/s, 6.28rad/s	360°/s, 6.28rad/s
	J4	-	-
	J5	-	-
	J6	-	-
Allowable moment of inertia	J6	0.85kgm ² (J3)	0.85kgm ² (J3)
	J5	-	-
	J4	-	-
Allowable torque	J6	28Nm (J3)	28Nm (J3)
	J5	-	-
	J4	-	-
Applicable environment	Temperature	0~45°C	0~45°C
	Humidity	20%~80%	20%~80%
	Other	Avoid contact with inflammable or corrosive gas and liquid, Stay away from electronic noise(plasma)	
Teach pendant cable length		8m	8m
Machine- Power box connect cable length.		6m	6m
I/O parameters		Pins: 32 pins input(NPN), 31 pins output(NPN);	
Body Reserved Signal Line		12pins (aviation plug)	12pins (aviation plug)
Pneumatic tube		2"Φ8	2"Φ8
Battery capacity		2kVA	2.45kVA
Rated power / voltage / current		1.68kW/Single PhaseAC220V/7.6A	2.28kW/Single PhaseAC220V/10.4A
Body/Electric Cabinet Protection Level		IP54/IP53	IP67/IP54
Installation method		Ground/Upside down/Side mount	Ground/Upside down/Side mount
Machine/power box weight		44kg/33.5kg	64kg/33.5kg

HSR-BR312 Operation Parameter



HSR-BR316 Operation Parameter



HSR-BR610

Six-axis bi-rotation Robot series

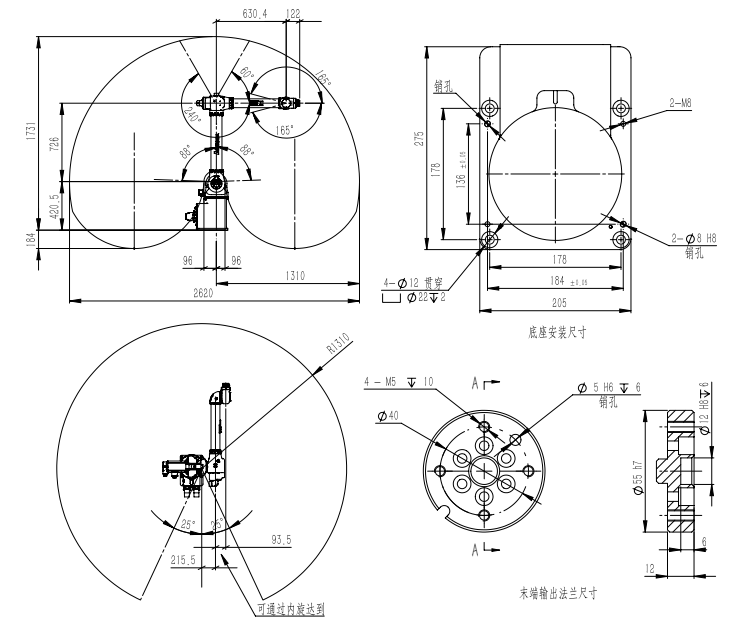
Introduction

Based on the BR series, the brand-new generation of HSR-BR610 that was designed for glass grinding, flat grinding, engraving and milling and other machines now has upgraded the protection level of its leading arm(tooling arm). This upgrade now allows the leading arm to be spraied or even immerse in water with IP 67 waterproof rating. Ultimately, it works faster,loads heavier,and the protection gets better.



Product model		HSR-BR610
Degree of freedom		6
Payload		10Kg
Maximum operate radius		1310mm
Repeat positioning accuracy		±0.05mm
Range of motion	J1	±155°
	J2	-178°/-2°
	J3	+120°/+420°
	J4	±190°
	J5	±165°
	J6	±360°
Maximum speed	J1	360°/s, 6.28rad/s
	J2	250°/s, 4.36 rad/s
	J3	360°/s, 6.28rad/s
	J4	480°/s, 8.38 rad/s
	J5	360°/s, 6.28rad/s
	J6	450°/s, 7.85 rad/s
Allowable moment of inertia	J6	0.15kgm ²
	J5	0.42kgm ²
	J4	0.42kgm ²
Allowable torque	J6	12.7Nm
	J5	20.4Nm
	J4	20.4Nm
Applicable environment	Temperature	0~45°
	Humidity	20%~80%
	Other	Avoid contact with inflammable or corrosive gas and liquid, Stay away from electronic noise(plasma)
Teach pendant cable length		8m
Machine- Power box connect cable length.		3m
I/O parameters		Pins: 32 pins input(NPN), 32 pins output(NPN);
Body Reserved Signal Line		12pins (aviation plug)
Pneumatic tube		1"Φ6
Battery capacity		2.55kVA
Rated power / voltage / current		2.04kW/Single PhaseAC220V/9.3A
Body/Electric Cabinet Protection Level		IP54 (robot arm IP67) /IP53
Installation method		Ground/Upside down/Side mount
Machine/power box weight		61kg/38kg

Operation Parameter



HSR-BR612

Six-axis bi-rotation Robot series

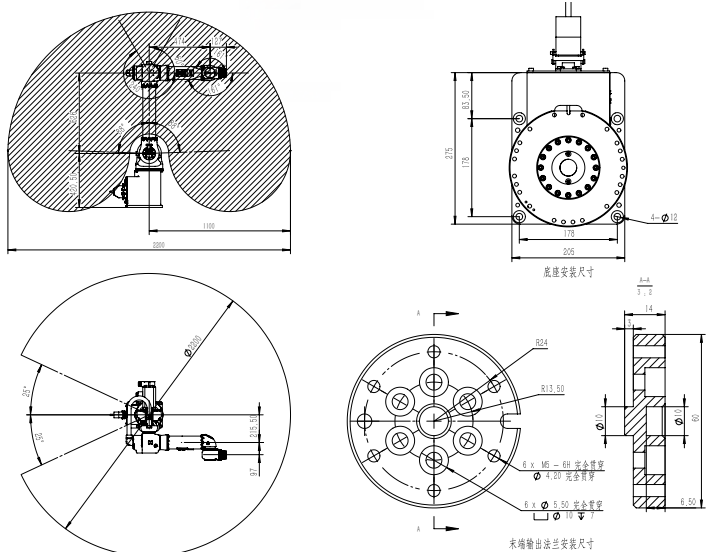
Introduction

Based on the BR series, the brand-new generation of HSR-BR612 that was designed for glass grinding, flat grinding, engraving and milling and other machines now has upgraded the protection level of its leading arm(tooling arm). This upgrade now allows the leading arm to be spraied or even immerse in water with IP 67 waterproof rating. Ultimately, it works faster,loads heavier,and the protection gets better.



Operation Parameter

Product model		HSR-BR612
Degree of freedom		6
Payload		12Kg
Maximum operate radius		1100mm
Repeat positioning accuracy		±0.05mm
Range of motion	J1	±155°
	J2	-178°/-2°
	J3	+120°/+420°
	J4	±360°
	J5	±161°
	J6	±360°
Maximum speed	J1	360°/s, 6.28rad/s
	J2	250°/s, 4.36 rad/s
	J3	360°/s, 6.28rad/s
	J4	480°/s, 8.38 rad/s
	J5	360°/s, 6.28 rad/s
	J6	450°/s, 7.85 rad/s
Allowable moment of inertia	J6	0.52kg·m ²
	J5	0.85kg·m ²
	J4	0.42 kg·m ²
Allowable torque	J6	20.3Nm
	J5	28.0Nm
	J4	20.4Nm
Applicable environment	Temperature	0~45°
	Humidity	20%~80%
	Other	Avoid contact with inflammable or corrosive gas and liquid, Stay away from electronic noise(plasma)
Teach pendant cable length		8m
Machine- Power box connect cable length.		6m
I/O parameters		Pins: 32 pins input(NPN), 32 pins output (NPN) ;
Body Reserved Signal Line		12pins (aviation plug)
Pneumatic tube		1"Φ8
Battery capacity		2.55kVA
Rated power / voltage / current		2.1kW/Single PhaseAC220V /9.4A
Body/Electric Cabinet Protection Level		IP54 (robot arm IP67) /IP53
Installation method		Ground/Upside down/Side mount
Machine/power box weight		65kg/38kg



HSR-BR616

Six-axis bi-rotation Robot series

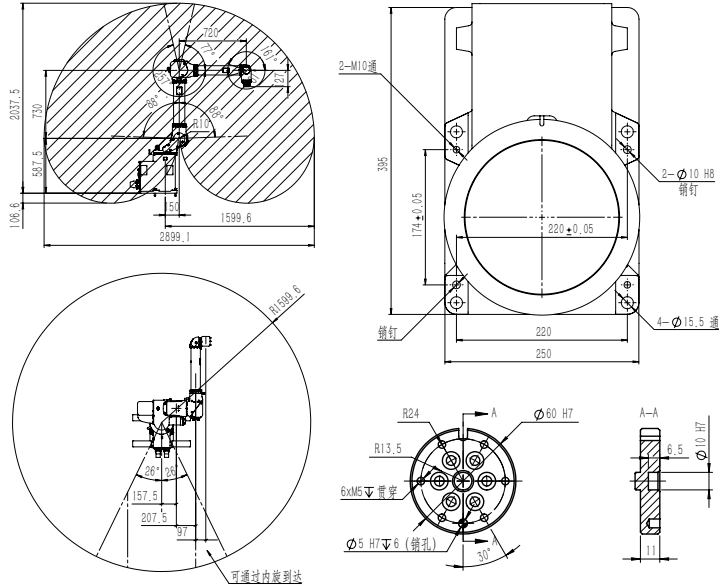
Introduction

Bases on the BR series, the brand-new generation of HSR-BR616 now has further upgraded. This machine now can undertake heavier load, higher protection rating, faster working pace. The whole designs now comply with IP 67 rating, which makes particularly suitable for: painting, dusting, loading and unloading on machine tools, assembly, palletizing and mold injection.



Operation Parameter

Product model		HSR-BR616
Degree of freedom		6
Payload		16Kg
Maximum operate radius		1600mm
Repeat positioning accuracy		±0.05mm
Range of motion	J1	±154°
	J2	-178°/-2°
	J3	+103°/+437°
	J4	±360°
	J5	±161°
	J6	±360°
Maximum speed	J1	236°/s, 4.12rad/s
	J2	217°/s, 3.78ad/s
	J3	357°/s, 6.23rad/s
	J4	443°/s, 7.72rad/s
	J5	360°/s, 6.28rad/s
	J6	450°/s, 7.85rad/s
Allowable moment of inertia	J6	0.52kg·m ²
	J5	0.85kg·m ²
	J4	0.99kg·m ²
Allowable torque	J6	20.3Nm
	J5	28.0Nm
	J4	34.0Nm
Applicable environment	Temperature	0~45°
	Humidity	20%~80%
	Other	Avoid contact with inflammable or corrosive gas and liquid, Stay away from electronic noise(plasma)
Teach pendant cable length		8m
Machine- Power box connect cable length.		6m
I/O parameters		Pins: 32 pins input(NPN), 32 pins output (NPN) ;
Body Reserved Signal Line		24pins (aviation plug)
Pneumatic tube		2"Φ8
Battery capacity		3.68kVA
Rated power / voltage / current		2.95kW/Single PhaseAC220V/13.4A
Body/Electric Cabinet Protection Level		IP67/IP54
Installation method		Ground
Machine/power box weight		124.5kg/47kg



HSR-BR625

Six-axis bi-rotation Robot series

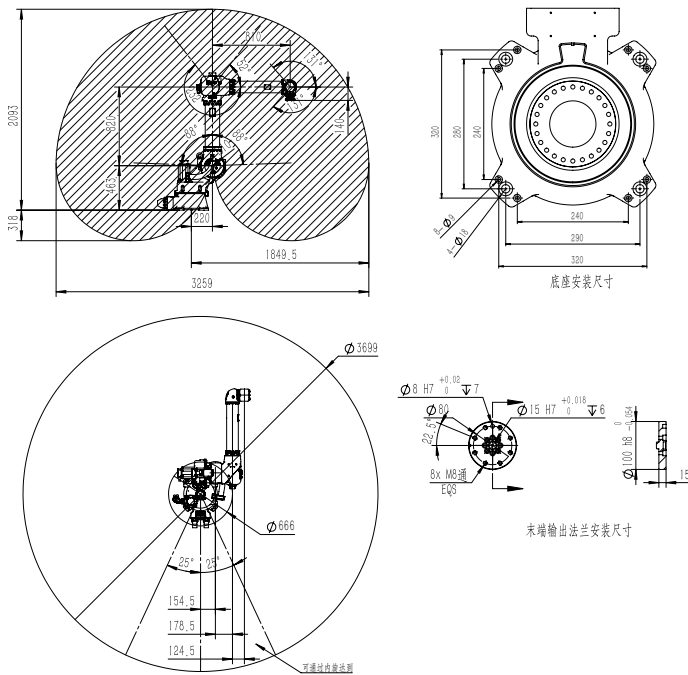
Introduction

Based on the BR series robots, after optimization and upgrade, HSR-BR625 was born with strong power, fast speed and load of 25KG. This robot with bi-spin structure occupies very small installation space. The 4th, 5th, and 6th axes are hollow arms with built-in cables. It is high cost-effective which can meet different needs of customers, especially suitable for assembly, loading and unloading, handling, stamping, PCB production and densely arranged drill centers etc.

Product model		HSR-BR625
Degree of freedom		6
Payload		25Kg
Maximum operate radius		1849.5mm
Repeat positioning accuracy		±0.05mm
Range of motion	J1	±155°
	J2	-178°/-2°
	J3	+128°/+412°
	J4	±360°
	J5	±131°
	J6	±360°
Maximum speed	J1	233°/s, 4.06rad/s
	J2	235°/s, 4.10ad/s
	J3	285°/s, 4.97rad/s
	J4	487°/s, 8.49rad/s
	J5	487°/s, 8.49rad/s
	J6	487°/s, 8.49rad/s
Allowable moment of inertia	J6	2.0kg·m ²
	J5	3.7kg·m ²
	J4	3.7kg·m ²
Allowable torque	J6	40.9Nm
	J5	79.8Nm
	J4	76.5Nm
Applicable environment	Temperature	0~45°
	Humidity	20%~80%
	Other	Avoid contact with inflammable or corrosive gas and liquid, Stay away from electronic noise(plasma)
Teach pendant cable length		8m
Machine- Power box connect cable length.		6m
I/O parameters		Pins: 32 pins input(NPN), 32 pins output (NPN) ;
Body Reserved Signal Line		24pins (aviation plug)
Pneumatic tube		2"Φ8
Battery capacity		5.6kVA
Rated power / voltage / current		4.3kW/3Phases 380V/8.1A
Body/Electric Cabinet Protection Level		IP54 (front end IP67) /IP53
Installation method		Ground/Upside down/Side mount/Install in any direction
Machine/power box weight		210kg/91kg



Operation Parameter



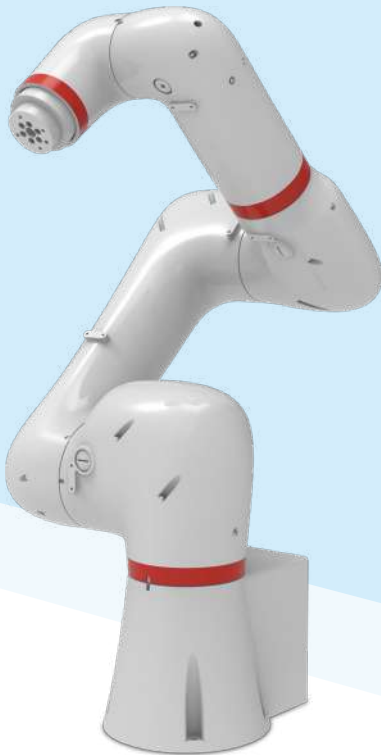
HSR-CR605/CR607

Six axis joint Robot series

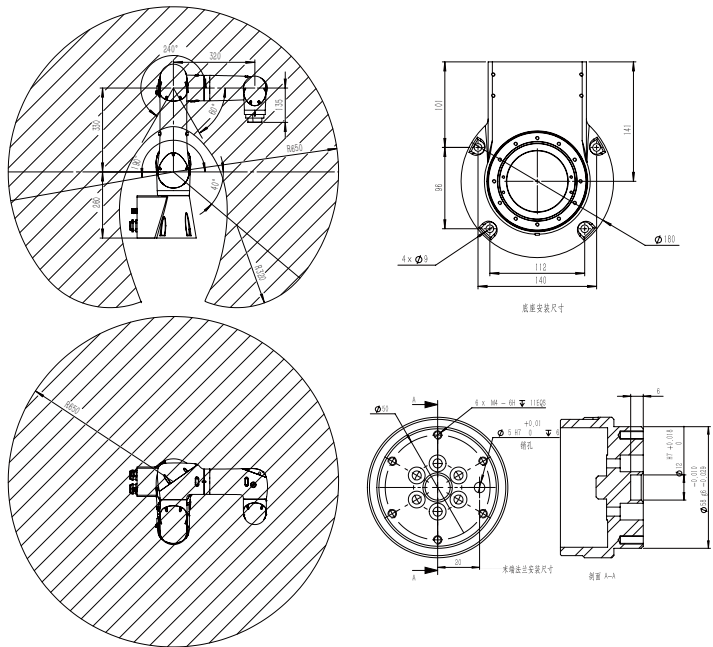
Introduction

The industrial collaborative robots HSR-CR605/CR607 have the following functions: anti-collision test, high degree of protection, high and low speed mode, and high expansion capability. When the robot bumps into an external facility (subject to external force), it can quickly detect and stop moving, which enhances the safety. With high degree of protection, it can cope with a variety of complex industrial environments. Compared with traditional industrial robots and collaborative robots, their biggest difference is that the working mode has high-speed mode and collaborative mode. Robots in high-speed mode is more efficient, and robots in collaborative mode is more intelligent and safer.

Product model		HSR-CR605	HSR-CR607
Degree of freedom		6	6
Payload		5Kg	7kg
Maximum operate radius		650mm	650mm
Repeat positioning accuracy		±0.02mm	±0.02mm
Range of motion	J1	180°	-180°/+180°
	J2	-190°/+40°	-190°/+40°
	J3	-60 /+240°	-60 /+240°
	J4	±180°	±180°
	J5	±180°	±180°
	J6	±360°	±360°
Maximum speed	J1	240°/s / 4.18rad/s	200°/s, 3.49rad/s
	J2	210°/s / 3.66rad/s	180°/s, 3.14rad/s
	J3	270°/s /4.71rad/s	200°/s, 3.49rad/s
	J4	375°/s / 6.54rad/s	300°/s, 5.23rad/s
	J5	300°/s / 5.23rad/s	300°/s, 5.23rad/s
	J6	600°/s / 10.46rad/s	375°/s, 6.54rad/s
Allowable moment of inertia	J6	0.12kg·m ²	0.12kg·m ²
	J5	0.23kg·m ²	0.23kg·m ²
	J4	0.31kg·m ²	0.31kg·m ²
Allowable torque	J6	6.8Nm	6.8Nm
	J5	13.3Nm	13.3Nm
	J4	21.56Nm	21.56Nm
Applicable environment	Temperature	0~50°C	0~50°C
	Humidity	20%~80%	20%~80%
	Other	Avoid contact with inflammable or corrosive gas and liquid, Stay away from electronic noise(plasma)	Avoid contact with inflammable or corrosive gas and liquid, Stay away from electronic noise(plasma)
Teach pendant cable length		8m	8m
Machine- Power box connect cable length.		3m	3m
I/O parameters		Pins: 32 pins input(NPN), 32 pins output (NPN) ;	Pins: 32pins input, 32 pins output
Body Reserved Signal Line		8pins (aviation plug)	8pins (aviation plug)
Pneumatic tube		1"Φ6	1"Φ6
Battery capacity		1.3kVA	1.3kVA
Rated power / voltage / current		1.1kW/Single Phase AC220V/5A	1.1kW/Single Phase AC220V/5A
Body/Electric Cabinet Protection Level		IP67/IP20	IP67/IP20
Installation method		Ground/Upside down	Ground/Upside down
Machine/power box weight		26kg/15kg	26kg/15kg



Operation Parameter



HSR-Co605

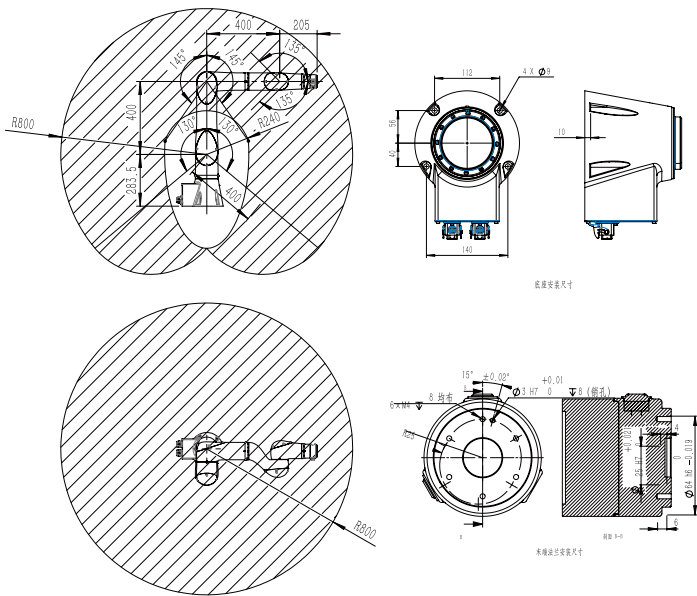
Six axis joint Robot series

Introduction

The new generation of collaborative robots HSR-Co605 is safe, efficient and easy to operate. Its compact and ergonomic structure enables flexible scheduling and easy integration into existing production lines. It can directly interact with people in the collaboration area, so that its production flexibility can be maximized and the diversified demand of users can be satisfied. Robot technology can enhance the level of production labor, reduce the costs, and improve competitiveness.



Operation Parameter



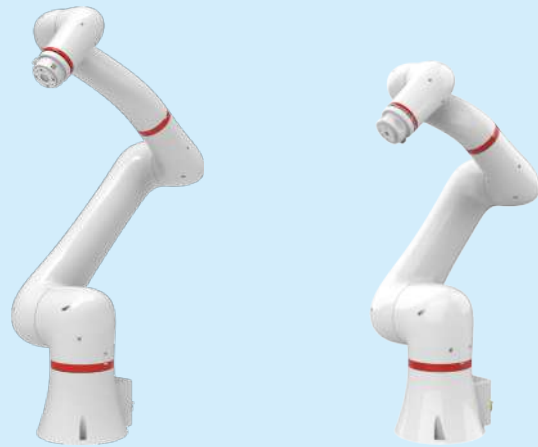
Product model		HSR-Co605
Degree of freedom		6
Payload		5kg
Maximum operate radius		800mm
Repeat positioning accuracy		±0.02mm
Range of motion	J1	±180°
	J2	- 220°/ + 40°
	J3	- 55°/ + 235°
	J4	±180°
	J5	±130°
	J6	±180°
Maximum speed	J1	120°/s, 2.09rad/s
	J2	120°/s, 2.09rad/s
	J3	150°/s, 2.62rad/s
	J4	240°/s, 4.19rad/s
	J5	240°/s, 4.19rad/s
	J6	240°/s, 4.19rad/s
Allowable moment of inertia	J6	0.3kg·m ²
	J5	0.3kg·m ²
	J4	0.3kg·m ²
Allowable torque	J6	11.5N·m
	J5	11.5N·m
	J4	11.5N·m
Applicable environment	Temperature	0~50°C
	Humidity	20%~80%
	Other	Avoid contact with inflammable or corrosive gas and liquid, Stay away from electronic noise(plasma)
Teach pendant cable length		8m
Machine- Power box connect cable length.		3m
I/O parameters		Pins: 16 pins input, 16 pins output
Body Reserved Signal Line		6pins (Hoomer connector)
Pneumatic tube		-
Battery capacity		2KVA
Rated power / voltage / current		1.2kW/Single Phase AC220V/5A
Body/Electric Cabinet Protection Level		IP54
Installation method		Ground/Upside down/Side mount/Install in any direction
Machine/power box weight		25kg/18kg

HSR-Co610/Co616

Six axis joint Robot series

Introduction

HSR-Co610/Co616 continues the flexible modeling and ergonomic design of cooperative robots Co series. With good interactive performance, safety and easy operation, it has a larger range of motion and stronger load capacity, which is suitable for palletizing, loading and unloading, screw delivery and so on.

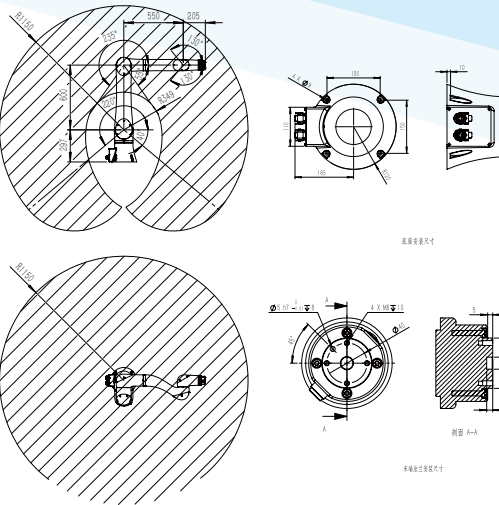


HSR-Co610

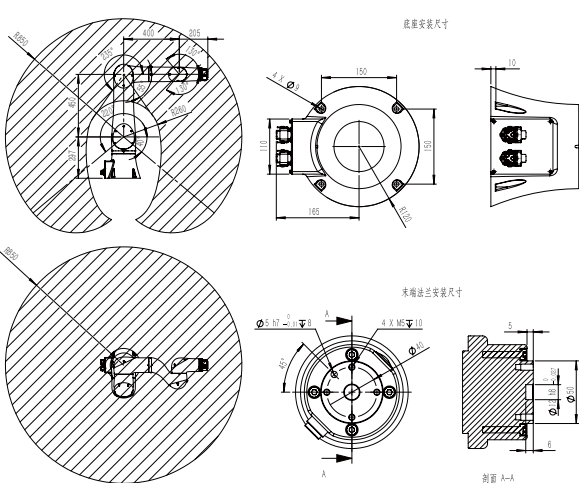
HSR-Co616

Product model		HSR-Co610	HSR-Co616
Degree of freedom		6	6
Payload		10kg	16kg
Maximum operate radius		1150mm	850mm
Repeat positioning accuracy		±0.04mm	±0.04mm
Range of motion	J1	±180°	±180°
	J2	- 220°/ + 40°	- 220°/ + 40°
	J3	- 55°/ + 235°	- 55°/ + 235°
	J4	±180°	±180°
	J5	±130°	±130°
	J6	±180°	±180°
Maximum speed	J1	120°/s, 2.09rad/s	120°/s, 2.09rad/s
	J2	120°/s, 2.09rad/s	120°/s, 2.09rad/s
	J3	150°/s, 2.62rad/s	150°/s, 2.62rad/s
	J4	225°/s, 3.93rad/s	180°/s, 3.14rad/s
	J5	225°/s, 3.93rad/s	180°/s, 3.14rad/s
	J6	225°/s, 3.93rad/s	180°/s, 3.14rad/s
Allowable moment of inertia	J6	0.96kgm ²	1.31kgm ²
	J5	0.96kgm ²	1.31kgm ²
	J4	0.96kgm ²	1.31kgm ²
Allowable torque	J6	30Nm	44Nm
	J5	30Nm	44Nm
	J4	30Nm	44Nm
Applicable environment	Temperature	0~50°C	0~50°C
	Humidity	20%~80%	20%~80%
	Other	Avoid contact with inflammable or corrosive gas and liquid, Stay away from electronic noise(plasma)	Avoid contact with inflammable or corrosive gas and liquid, Stay away from electronic noise(plasma)
Teach pendant cable length		8m	8m
Machine- Power box connect cable length.		3m	3m
I/O parameters		Pins: 16 pins input, 16 pins output	Pins: 16 pins input, 16 pins output
Body Reserved Signal Line		6pins (Hoomer connector)	6pins (Hoomer connector)
Pneumatic tube		-	-
Battery capacity		2KVA	2KVA
Rated power / voltage / current		1.2kW/Single Phase AC220V/6A	1.2kW/Single Phase AC220V/6A
Body/Electric Cabinet Protection Level		IP54	IP54
Installation method		Ground/Upside down/Side mount/Install in any direction	Ground/Upside down/Side mount/Install in any direction
Machine/power box weight		41kg/18kg	38.5kg/18kg

HSR-Co610 Operation Parameter



HSR-Co616 Operation Parameter



HSR-JH605

Six axis joint Robot series

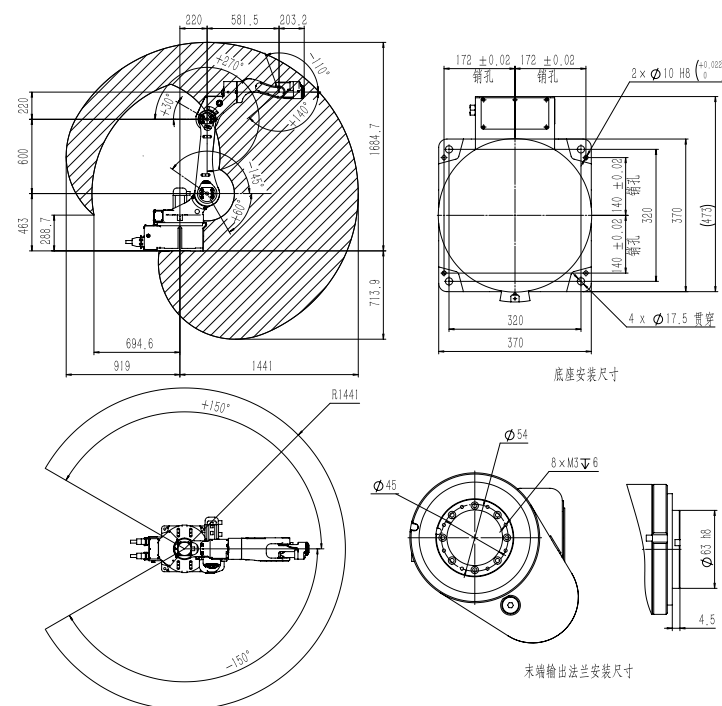
Introduction

Based on years of design experience, the brand-new HSR-JH605E is made for multiple types of welding situation. After scientifically rearranging the internal structure, all cables and components now are well protected from all sorts of external device interference, which makes it stable and reliable when it works in narrow space. It has also integrated rapid welding process deployment, welding after current interruption, intelligent weaving welding, positioner linkage and collision prevention and other functions.



Product model		HSR-JH605
Degree of freedom		6
Payload		5Kg
Maximum operate radius		1441mm
Repeat positioning accuracy		±0.06mm
Range of motion	J1	±150°
	J2	-145°/+60°
	J3	+30°/+270°
	J4	±120°
	J5	-110°/+140°
	J6	±360°
Maximum speed	J1	198°/s, 3.46rad/s
	J2	198°/s, 3.46rad/s
	J3	198°/s, 3.46rad/s
	J4	300°/s, 5.23rad/s
	J5	300°/s, 5.23rad/s
	J6	300°/s, 5.23rad/s
Allowable moment of inertia	J6	0.035kg·m ²
	J5	0.3kg·m ²
	J4	0.3kg·m ²
Allowable torque	J6	15Nm
	J5	35Nm
	J4	35Nm
Applicable environment	Temperature	0~45°
	Humidity	20%~80%
	Other	Avoid contact with inflammable or corrosive gas and liquid, Stay away from electronic noise(plasma)
Teach pendant cable length		8m
Machine- Power box connect cable length.		5m
I/O parameters		Pins: 32 pins input(NPN), 31 pins output(NPN);
Body Reserved Signal Line		-
Pneumatic tube		-
Battery capacity		2.5kVA
Rated power / voltage / current		2kW/Single Phase AC220V 50HZ/10.8A
Body/Electric Cabinet Protection Level		IP50/IP50
Installation method		Ground/Upside down/Side mount
Machine/power box weight		196kg/50kg

Operation Parameter



HSR-JH615/JH620

Six axis joint Robot series

Introduction

HSR-JH615/JH620 is a high speed and high precision universal robot, which is easy to arrange tool pipelines in welding and grinding applications, and minimize the interference of terminal pipelines. The protection grade of the forearm reaches IP67, which is suitable for loading and unloading of machine tools and other working conditions. The high speed and precision index will effectively help enterprises to improve the quality and efficiency.

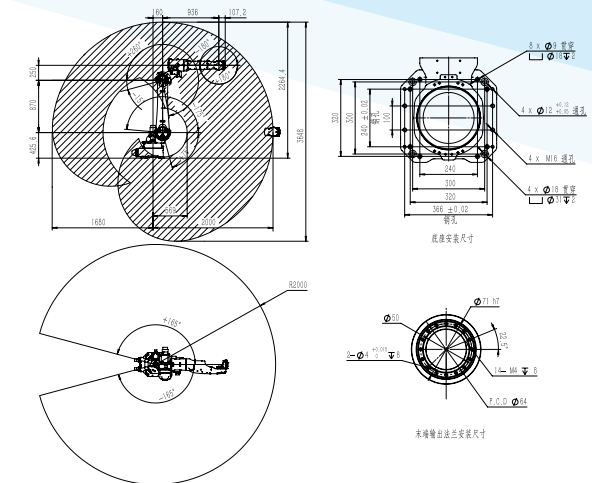


HSR-JH615

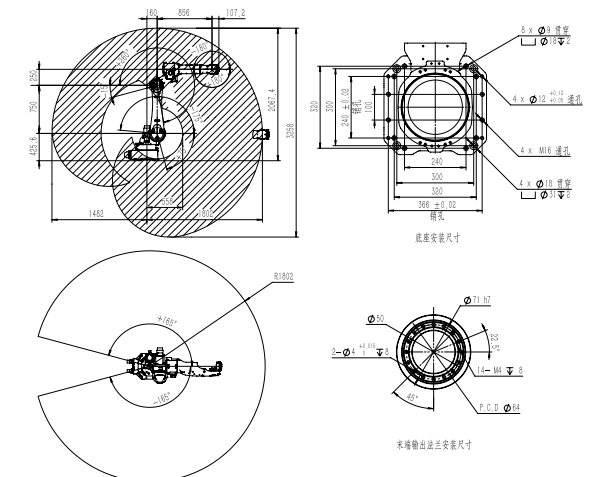
HSR-JH620

Product model		HSR-JH615	HSR-JH620
Degree of freedom		6	6
Payload		15Kg	20Kg
Maximum operate radius		2000mm	1802mm
Repeat positioning accuracy		±0.05mm	±0.05mm
Range of motion	J1	±165°	±165°
	J2	-175°/+75°	-175°/+75°
	J3	-15°/+260°	-15°/+260°
	J4	±170°	±170°
	J5	±180°	±180°
	J6	±400°	±400°
Maximum speed	J1	220°/s, 3.84rad/s	220°/s, 3.84rad/s
	J2	200°/s, 3.49rad/s	200°/s, 3.49rad/s
	J3	220°/s, 3.84rad/s	220°/s, 3.84rad/s
	J4	330°/s, 5.75rad/s	330°/s, 5.75rad/s
	J5	420°/s, 7.33rad/s	420°/s, 7.33rad/s
	J6	600°/s, 10.47rad/s	600°/s, 10.47rad/s
Allowable moment of inertia	J6	1kg·m ²	1kg·m ²
	J5	2.2kg·m ²	2.2kg·m ²
	J4	2.8kg·m ²	2.8kg·m ²
Allowable torque	J6	32Nm	32Nm
	J5	52Nm	52Nm
	J4	60Nm	60Nm
Applicable environment	Temperature	0~45°	0~45°
	Humidity	20%~80%	20%~80%
	Other	Avoid contact with inflammable or corrosive gas and liquid, Stay away from electronic noise(plasma)	
Teach pendant cable length		8m	8m
Machine- Power box connect cable length.		8m	8m
I/O parameters		Pins: 32 pins input(NPN), 30pins output(NPN) ;	
Body Reserved Signal Line		16pin (solder connected aviation plug)	16pin (solder connected aviation plug)
Pneumatic tube		3"Φ8	3"Φ8
Battery capacity		6.9kVA	6.9kVA
Rated power / voltage / current		5kW/3Phases AC380V/9.3A	5kW/3Phases AC380V/9.3A
Body/Electric Cabinet Protection Level		IP54 (robot arm IP67) /IP53	IP54 (robot arm IP67) /IP53
Installation method		Ground/Upside down/Side mount	Ground/Upside down/Side mount
Machine/power box weight		295kg/90kg	280kg/90kg

HSR-JH615 Operation Parameter



HSR-JH620 Operation Parameter



HSR-MD410

Four axis joint Robot series

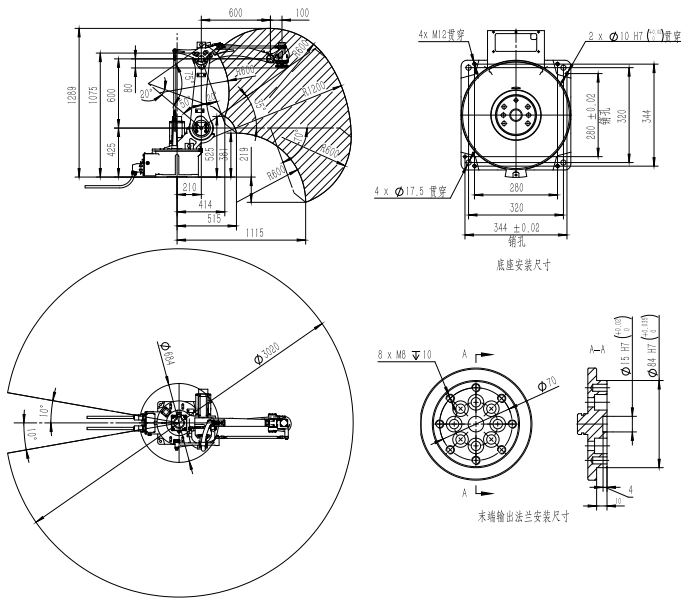
Introduction

The HSR-MD410 developed for the stamping field has many advantages such as high precision, fast running speed, and convenient maintenance. The robot application is not limited by the number, the debugging is simple, and the switching is simple. You only need to change the fixtures in the area when changing the mold. The production plan can adopt synchronous online and asynchronous online design, which can effectively avoid all downtime caused by factors such as switching molds at any time. This robot can be widely used in fields such as loading and unloading, handling, palletizing, and destacking of workpieces.



Operation Parameter

Product model		HSR-MD410
Degree of freedom		4
Payload		10Kg
Maximum operate radius		1510mm
Repeat positioning accuracy		±0.08mm
Range of motion	J1	±170°
	J2	-140°/0°
	J3	-30°/+155°
	J4	±360°
Maximum speed	J1	315°/s, 5.49rad/s
	J2	315°/s, 5.49rad/s
	J3	220°/s, 3.84rad/s
	J4	360°/s, 6.28rad/s
Allowable moment of inertia	J4	0.25kg·m²
Allowable torque	J4	42Nm
Applicable environment	Temperature	0~45°C
	Humidity	20%-80%
	Other	Avoid contact with inflammable or corrosive gas and liquid, Stay away from electronic noise(plasma)
Teach pendant cable length	8m	
Machine- Power box connect cable length	6m	
I/O parameters	Pins: 32 pins input(NPN), 32pins output(NPN);	
Body Reserved Signal Line	12pin (solder connected aviation plug)	
Pneumatic tube	2"φ8	
Battery capacity	4kVA	
Rated power / voltage / current	3kW/2Phases AC220V 50HZ/15A	
Body/Electric Cabinet Protection Level	IP54/IP20	
Installation method	Ground	
Machine/power box weight	140kg/15kg	



HSR-MD4110/MD4130

Four axis joint Robot series

Introduction

HSR-MD/4110MD4130 has a payload of 130kg,a repeatable positioning accuracy of ±0.3mm, and a maximum working radius of 3150mm. It has many advantages such as high accuracy, fast running speed, convenient maintenance and so on. It can be widely used in stamping,loading and unloading, handling,unstacking, palletizing and other tasks in packaging, beverage, chemical, food and other fields.



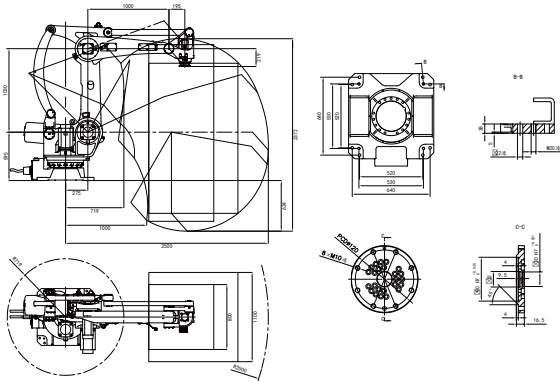
HSR-MD4110



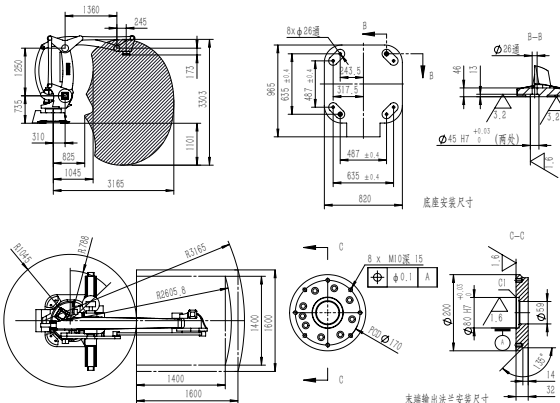
HSR-MD4130

Product model		HSR-MD4110	HSR-MD4130
Degree of freedom		4	4
Payload		110kg	130kg
Maximum operate radius		2500mm	3150mm
Repeat positioning accuracy		±0.3mm	±0.3mm
Range of motion	J1	±180°	±180°
	J2	-47°/+98°	-44°/+100°
	J3	-20°/+112°	-15°/+ 121°
	J4	±360°	±360°
Maximum speed	J1	170°/s,2.96rad/s	128°/s, 2.23rad/s
	J2	159°/s,2.77rad/s	126°/s, 2.19rad/s
	J3	166°/s,2.9rad/s	135°/s, 2.35rad/s
	J4	429°/s,7.48rad/s	300°/s, 5.23rad/s
Allowable moment of inertia	J4	7kgm²	-
Allowable torque	J4	202Nm	-
Applicable environment	Temperature	0~45°	0~45°C
	Humidity	20%~80%	20%~80%
	Other	Avoid contact with inflammable or corrosive gas and liquid, Stay away from electronic noise(plasma)	
Teach pendant cable length	8m		8m
Machine- Power box connect cable length	8m		8m
I/O parameters	Pins: 32 pins input(NPN), 31pins output(NPN);		
Body Reserved Signal Line	12pin (solder connected aviation plug)		-
Pneumatic tube	4"φ10		2"φ12
Battery capacity	15kVA		15kVA
Rated power / voltage / current	12kW/3Phases AC380V 50HZ/30A		12kW/3Phases AC380V/30A
Body/Electric Cabinet Protection Level	IP54/IP53		IP54/IP53
Installation method	Ground		Ground
Machine/power box weight	810kg/约160kg		1500kg/约160kg

HSR-MD4110 Operation Parameter



HSR-MD4130 Operation Parameter



HSR-SR3400

Four axis joint Robot series

Introduction

The HSR-SR3400 is specifically designed for desktop class pickup and install situation. Featuring high speed, high accuracy, it can be widely applied in electronic, medication and food industry.



HSR-SR6600/SR5700

Four axis joint Robot series

Introduction

Thanks to years of experience of accumulation on servo control, the HSR-SR6600/SR5700 adopts independently developed control technology, cleverly uses the performance of servo motor performance, featuring with large travelling range, high accuracy, high performance. It can be widely used in the field of electronic, medication and food industry etc.

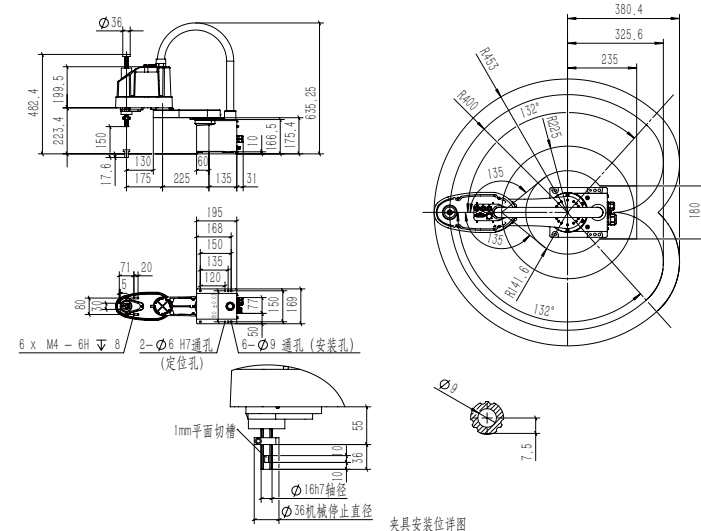


HSR-SR6600

HSR-SR5700

Product model		HSR-SR3400
Degree of freedom		4
Payload		3kg
Maximum operate radius		400mm
Repeat positioning accuracy		±0.01mm
Range of motion	J1	±132°
	J2	±135°
	J3	0/-150mm
	J4	±360°
Maximum speed	J1	530°/s,9.24rad/s
	J2	700°/s,12.21rad/s
	J3	1065mm/s
	J4	2600°/s,43.35rad/s
Allowable moment of inertia	J4	0.05kgm ² /0.005kgm ²
Allowable torque	J4	3.29Nm
Applicable environment	Temperature	0-45℃
	Humidity	20%-80%
	Other	Avoid contact with inflammable or corrosive gas and liquid, Stay away from electronic noise(plasma)
Teach pendant cable length		8m
Machine- Power box connect cable length.		3m
I/O parameters		Pins: 32 pins input(both NPN and PNP), 32pins output(NPN) ;
Body Reserved Signal Line		12pins (aviation plug)
Pneumatic tube		3"Φ6
Battery capacity		0.75KVA
Rated power / voltage / current		0.55kW/Single Phase AC220V 50HZ/3A
Body/Electric Cabinet Protection Level		IP54/IP20
Installation method		Ground/Desktop mount
Machine/power box weight		17.5kg/10.65kg

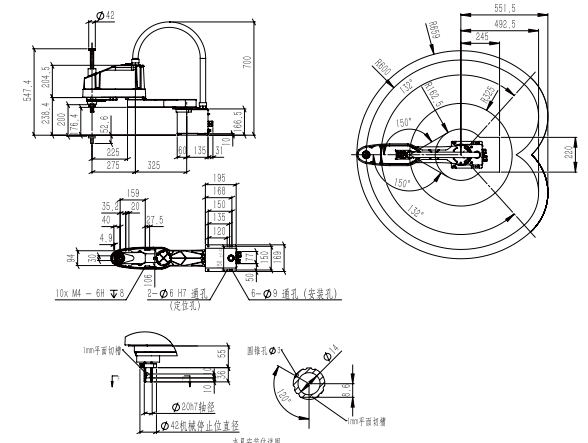
Operation Parameter



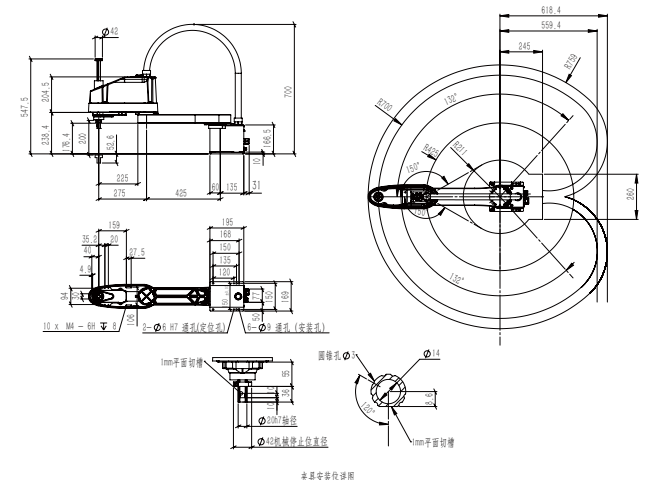
夹具安装位详图

Product model		HSR-SR6600	HSR-SR5700
Degree of freedom		4	4
Payload		6Kg	5Kg
Maximum operate radius		600mm	700mm
Repeat positioning accuracy		±0.02mm	±0.02mm
Range of motion	J1	±132°	±132°
	J2	±150°	±150°
	J3	0/-200mm	0/-200mm
	J4	±360°	±360°
Maximum speed	J1	375°/s,5.64rad/s	335°/s,5.84rad/s
	J2	600°/s,10.46rad/s	600°/s,10.46rad/s
	J3	1111mm/s	1111mm/s
	J4	2000°/s,34.88rad/s	2000°/s,34.88rad/s
Allowable moment of inertia	J4	0.12kg·m ² /0.01kg·m ²	0.12kg·m ² /0.01kg·m ²
Allowable torque	J4	4.23Nm	4.23Nm
Applicable environment	Temperature	0~45℃	0~45℃
	Humidity	20%-80%	20%-80%
	Other	Avoid contact with inflammable or corrosive gas and liquid, Stay away from electronic noise(plasma)	
Teach pendant cable length		8m	8m
Machine- Power box connect cable length.		3m	3m
I/O parameters		Pins: 32 pins input(both NPN and PNP), 32pins output(NPN)	
Body Reserved Signal Line		12pins (aviation plug)	12pins (aviation plug)
Pneumatic tube		3"ø6	3"ø6
Battery capacity		0.8kVA	0.8kVA
Rated power / voltage / current		0.62kW/Single Phase AC220V 50HZ/3.2A	0.62kW/Single Phase AC220V 50HZ/3.2A
Body/Electric Cabinet Protection Level		IP54/IP20	IP54/IP20
Installation method		Ground/Desktop mount	Ground/Desktop mount
Machine/power box weight		21.5kg/10.65kg	22.5kg/10.65kg

HSR-SR6600 Operation Parameter



HSR-SR5700 Operation Parameter



HSR-SR10600

Four axis joint Robot series

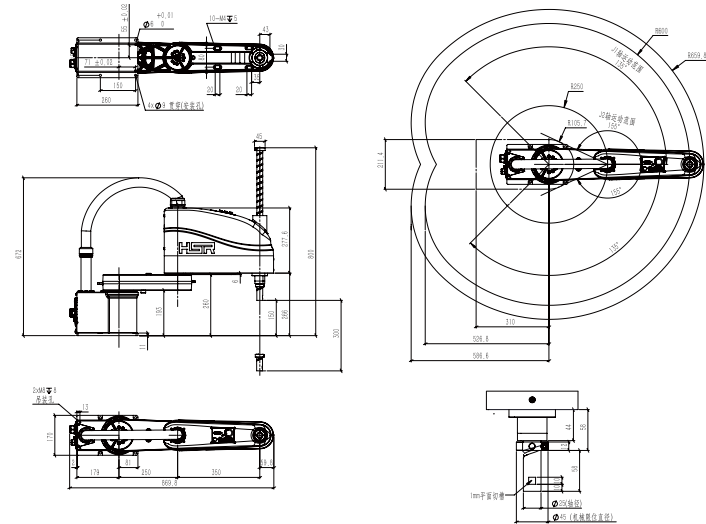
Introduction

HSR-SR10 series robots are specially developed for high speed and medium load. There are two arm lengths of 600mm and 800mm available to meet the different needs of users. Relying on the technology accumulation of servo control in Huazhong CNC for many years, it smartly adopts self-developed control technology and servo motor performance and can carry a maximum load of 10kg under high torque conditions. HSR-SR10 series robots have the advantages of fast speed, high rigidity, small covering area, large working range, high adaptability, easy and stable operation.



Product model		HSR-SR10600
Degree of freedom		4
Payload		10kg
Maximum operate radius		600mm
Repeat positioning accuracy		±0.03mm
Range of motion	J1	±135°
	J2	±155°
	J3	0-300mm
	J4	±360°
Maximum speed	J1	600°/s,10.47rad/s
	J2	650°/s,11.34rad/s
	J3	2200mm/s
	J4	2250°/s,39.26rad/s
Allowable moment of inertia	J4	0.32/0.02kgm ²
Allowable torque	J4	8.83Nm
Applicable environment	Temperature	0~45°C
	Humidity	20%~80%
	Other	Avoid contact with inflammable or corrosive gas and liquid, Stay away from electronic noise(plasma)
Teach pendant cable length		8m
Machine- Power box connect cable length.		3m
I/O parameters		Pins: 32 pins input(both NPN and PNP), 32pins output(NPN);
Body Reserved Signal Line		12pins (aviation plug)
Pneumatic tube		3*Φ6
Battery capacity		3kVA
Rated power / voltage / current		15kW/Single Phase AC220V 50HZ/4A
Body/Electric Cabinet Protection Level		IP54/IP20
Installation method		Ground/Desktop mount
Machine/power box weight		32kg/10.65kg

Operation Parameter



HSR-SR10800

Four axis joint Robot series

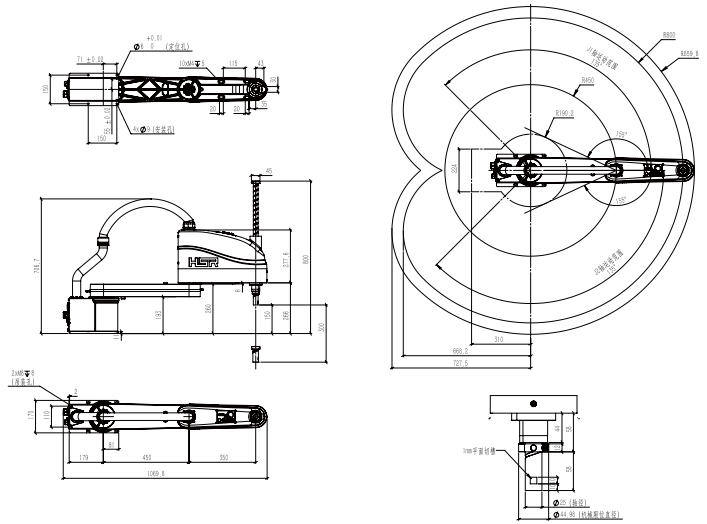
Introduction

HSR-SR10 series robots are specially developed for high speed and medium load. There are two arm lengths of 600mm and 800mm available to meet the different needs of users. Relying on the technology accumulation of servo control in Huazhong CNC for many years, it smartly adopts self-developed control technology and servo motor performance and can carry a maximum load of 10kg under high torque conditions. HSR-SR10 series robots have the advantages of fast speed, high rigidity, small covering area, large working range, high adaptability, easy and stable operation.



Product model		HSR-SR10800
Degree of freedom		4
Payload		10kg
Maximum operate radius		800mm
Repeat positioning accuracy		±0.035mm
Range of motion	J1	±135°
	J2	±155°
	J3	0-300mm
	J4	±360°
Maximum speed	J1	430°/s,7.50rad/s
	J2	650°/s,11.34rad/s
	J3	2200mm/s
	J4	2250°/s,39.26rad/s
Allowable moment of inertia	J4	0.32/0.02kgm ²
Allowable torque	J4	8.83Nm
Applicable environment	Temperature	0~45°C
	Humidity	20%~80%
	Other	Avoid contact with inflammable or corrosive gas and liquid, Stay away from electronic noise(plasma)
Teach pendant cable length		8m
Machine- Power box connect cable length.		3m
I/O parameters		Pins: 32 pins input(both NPN and PNP), 32pins output(NPN);
Body Reserved Signal Line		12pins (aviation plug)
Pneumatic tube		3*Φ6
Battery capacity		3kVA
Rated power / voltage / current		15kW/Single Phase AC220V 50HZ/4A
Body/Electric Cabinet Protection Level		IP54/IP20
Installation method		Ground/Desktop mount
Machine/power box weight		35kg/10.65kg

Operation Parameter



HSR-SR20800/SR201000

Four axis joint Robot series

Introduction

HSR-SR20 series robots are specially developed for the application scenarios of high-speed, large sheet, high inertia, large load. With the advantages of high speed, high rigidity, flexible motion and high stability, it can be widely used in electronic product industry, new energy, glass panel, PCB, photovoltaic and other fields.

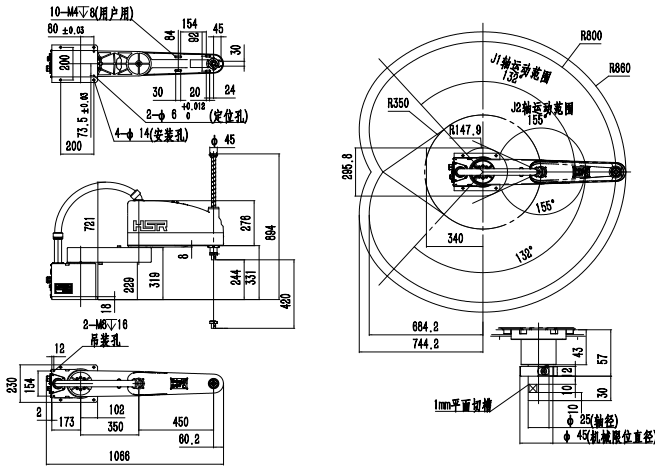


HSR-SR20800

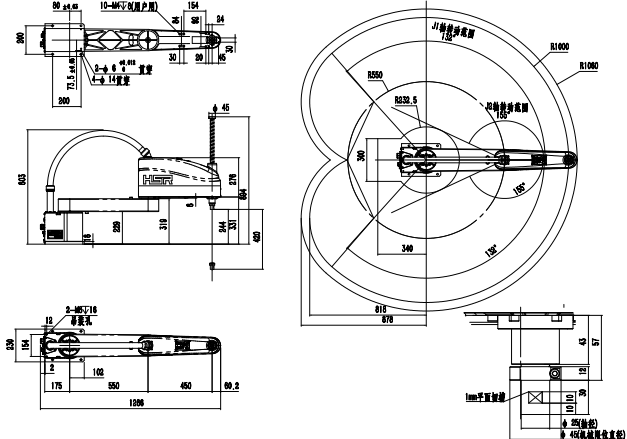


HSR-SR201000

HSR-SR20800 Operation Parameter



HSR-SR201000 Operation Parameter



HSR-HC403

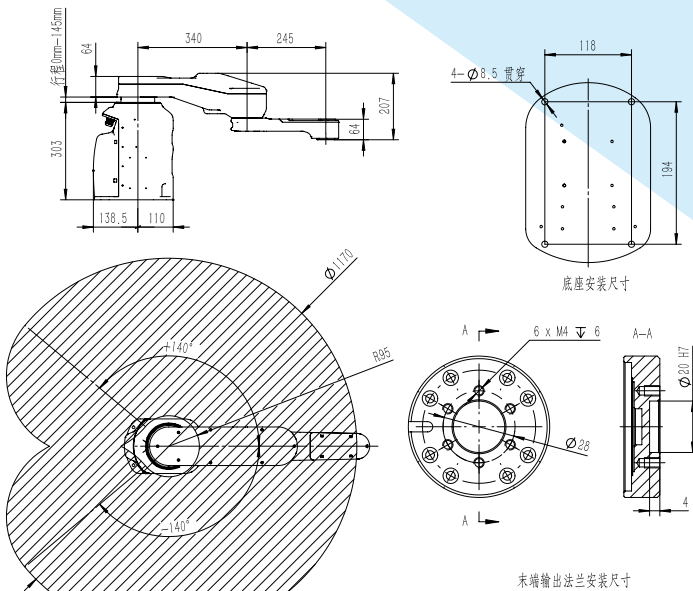
Four axis joint Robot series

Introduction

The HSR-HC403 high protection robot featuring with high protection rating design, allows it to operate under high humidity, or other harsh environment that contains oil, acid, alkaline cutting coolant. Its design isolates the contact of external air to the internal component. Tremendously reduce the chance of malfunction due to environmental factors. Particularly suitable for electronic device industry handling, sorting, assembly task etc.



Operation Parameter



HSR-DT401 / DT803

Delta robot series

Introduction

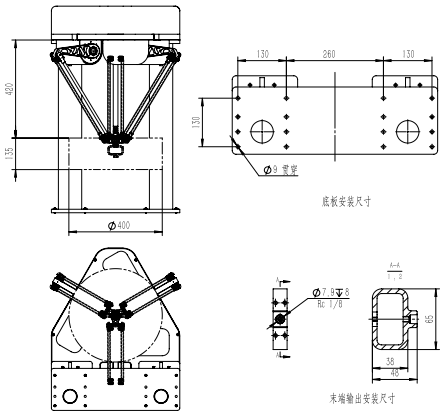
HSR-DT series robots are suitable for rapid sorting and packing in various industries. They integrate intelligent visual recognition functions and have good dynamic tracking functions, which can meet most of the scenes that require rapid sorting. DT_Catch software integrates vision setting, tool setting, trajectory setting, palletizing module, and calibration module into one module, which is easy for operation. Relying on the mature motion control technology of Huazhong CNC for many years, it ensures the precise positioning and stable operation of the robot. The key moving parts adopt imported mature brands to ensure service life.



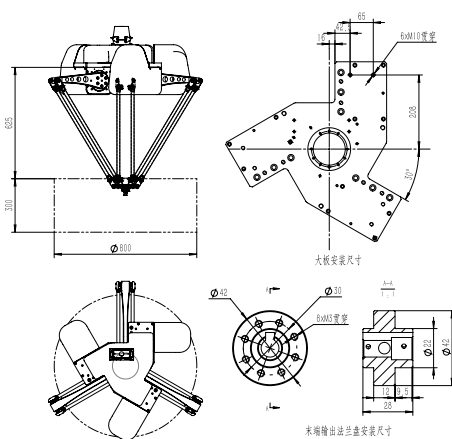
HSR-DT401

HSR-DT803

HSR-DT401 Operation Parameter



HSR-DT803 Operation Parameter



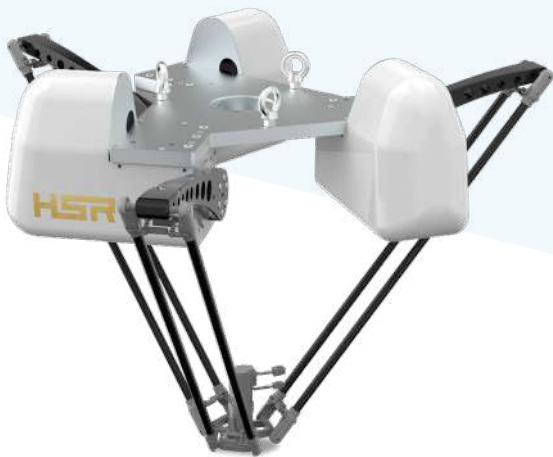
Product model	HSR-DT401	HSR-DT803
Degree of freedom	3+1 (Connecting rod type)	3 3+1 (Motor direct connection type)
Payload	1kg	3kg 3kg
Maximum moving radius	200mm	400mm
Maximum pickup and place height	135mm	300mm
The fourth axis rotation angle	±360°	/
Repeat positioning accuracy	±0.1mm	±0.1mm
Operation beats per minute (25mm-305mm-25mm), 0.1KG	200	180
Voltage	380V	380V
Rated power	1800W	3200W
I/O parameters	Pins:24pins input, 32pins output	Pins:24pins input, 16pins output
Communication interface	Network port:1	Ethercat Interface:1
Telecommunications	TCP/IP, MODBUS TCP	TCP/IP, MODBUS TCP
Body Reserved Signal Line	10pins (Terminals connection)	10pins (Terminals connection)
Pneumatic tube	-	-
Machine weight	85kg	114kg
Installation method	Desktop	Upside down
Power box weight	30kg	38kg
Power box size	500 (Wide) × 322 (Thickness) × 530 (High)	575 (Wide) × 352 (Thickness) × 530 (High)
Machine-Power box connect cable length	5m	5m
Teach pendant cable length	Without teaching pendant	Without teaching pendant
Humidity	20%-85%	20%-85%
Temperature	0-45°C	0-45°C
Body Protection Level	IP54	IP54
Electric Cabinet Protection Level	IP53	IP53

HSR-DT1208

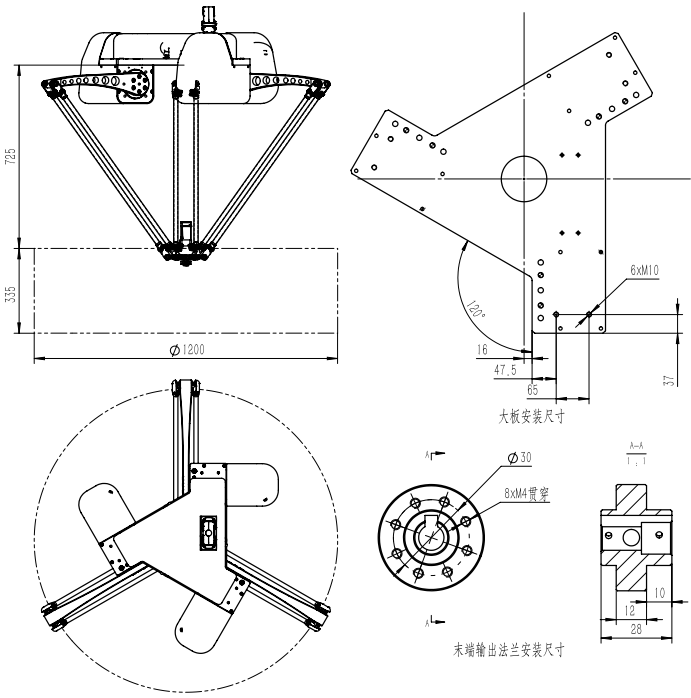
Delta robot series

Introduction

HSR-DT series robots are suitable for rapid sorting and packing in various industries. They integrate intelligent visual recognition functions and have good dynamic tracking functions, which can meet most of the scenes that require rapid sorting. DT_Catch software integrates vision setting, tool setting, trajectory setting, palletizing module, and calibration module into one module, which is easy for operation. Relying on the mature motion control technology of Huazhong CNC for many years, it ensures the precise positioning and stable operation of the robot. The key moving parts adopt imported mature brands to ensure service life.

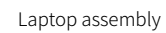
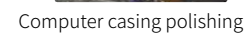
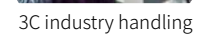
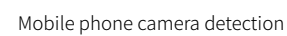
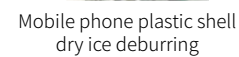
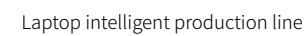
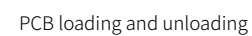
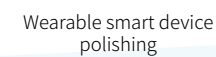
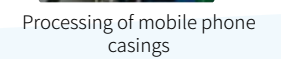
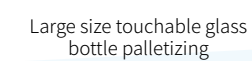
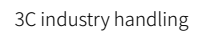
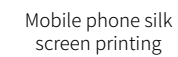
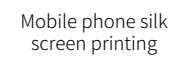
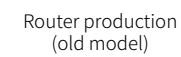
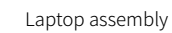
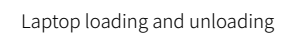
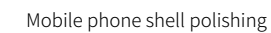
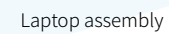
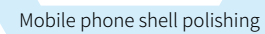
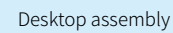


Operation Parameter



Product model	HSR-DT1208
Degree of freedom	3 3+1 (Motor direct connection type)
Payload	8kg
Maximum moving radius	600mm
Maximum pickup and place height	335mm
The fourth axis rotation angle	/
Repeat positioning accuracy	±0.1mm
Operation beats per minute (25mm-305mm-25mm), 0.1KG	180
Voltage	380V
Rated power	6200W
I/O parameters	Pins:24pins input, 16pins output
Communication interface	Network port:1
Telecommunications	TCP/IP, MODBUS TCP
Body Reserved Signal Line	10pins (Terminals connection)
Pneumatic tube	-
Machine weight	135kg
Installation method	Upside down
Power box weight	43kg
Power box size	575 (Wide) × 352 (Thickness) × 530 (High)
Machine-Power box connect cable length	5m
Teach pendant cable length	Without teaching pendant
Humidity	20%-85%
Temperature	0-45°C
Body Protection Level	IP54
Electric Cabinet Protection Level	IP53

Huashu Robot tightly follow the trend of the market. Through-hole years of innovation in various field, we are now able to continuously release new products and expand the field of application while always meet the market need.



Home appliance industry application case

Quality is the unshakable foundation.
It is also our dedication to perfection.

Professional Solution

Huashu Robot provide both product and manufacture solution to our customer, dedicating to win the market and satisfy its need.

Mature innovation system

Huashu Robot tightly follow the trend of the market. Through-hole years of innovation in various field, we are now able to continuously release new products and expand the field of application while always meet the market need.



Sheet metal stamping



Kitchenware polishing



Home appliance assembly



Sheet metal stamping



Load and unload the machining center



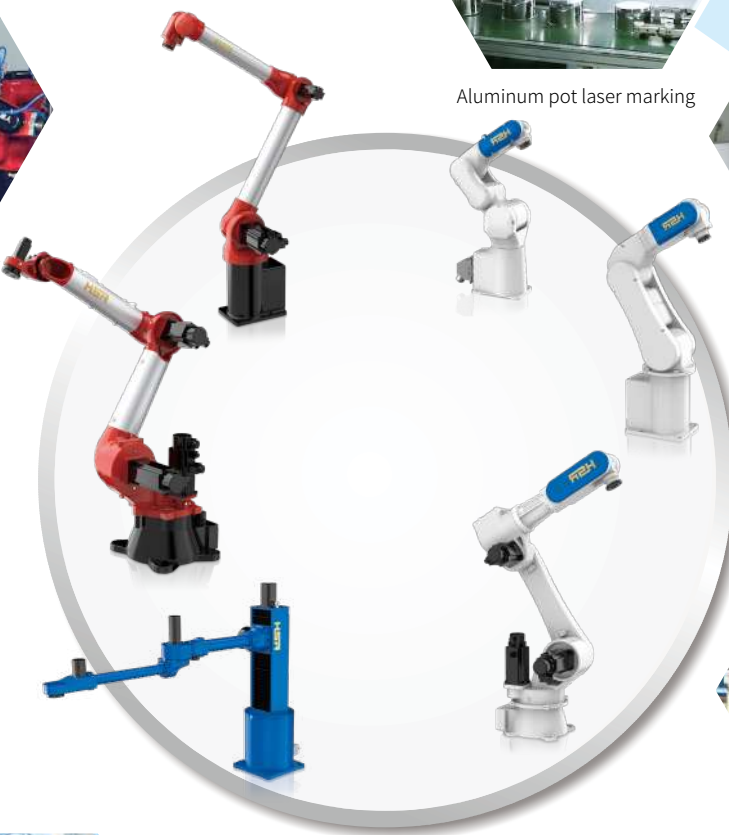
kitchenware polish



Home appliance assembly



Sheet metal stamping



Application Cases in Kitchenware Industry

Quality is the unshakable foundation.
It is also our dedication to perfection.



Loading and unloading of aluminum pot bottom



Grinding and stitching pot mouth and bottom



Hand washing tray stamping loading and unloading



Production line of aluminum pot stretching mouth stitching and punching



Loading and unloading of aluminum pot bottom



Round pot polishing



Stretching stitching mouth and bottom



Force control polishing line



Grinding and stitching pot mouth and bottom



Production line of aluminum pot stretching mouth stitching and punching



Packing carton palletizing



Loading and unloading of aluminum pot bottom



Deburring and reclaiming for injection parts



Grinding and stitching pot mouth and bottom



Loading and unloading of aluminum pot bottom

Application Cases in Car Industry

Quality is the unshakable foundation.
It is also our dedication to perfection.

Professional Solution

Huashu Robot provide both product and manufacture solution to our customer, dedicating to win the market and satisfy its need.

Mature innovation system

Huashu Robot tightly follow the trend of the market. Through-hole years of innovation in various field, we are now able to continuously release new products and expand the field of application while always meet the market need.



Car door and window welding



Hot forging loading and unloading of parts



Palletizing cement bag packaging box in building materials industry



Gravity pouring and unloading in metal products industry



Unloading cooling fin in hardware industry



Injection molding machine loading and unloading



Welding steel structure parts of motorcycle



Wheel spraying



Rearview mirror glass loading and unloading



Steel structure parts welding



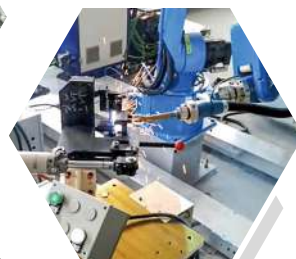
Car wheel painting



Automotive parts welding application



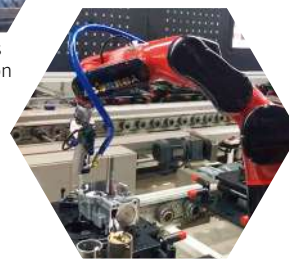
Copilot glove box spraying



Automotive parts welding application



Door frame stamping



Engine glue application



Loading and unloading of parts flange



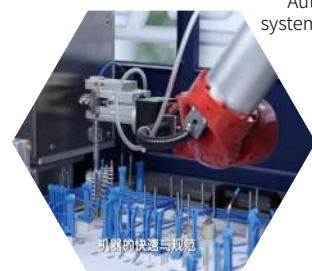
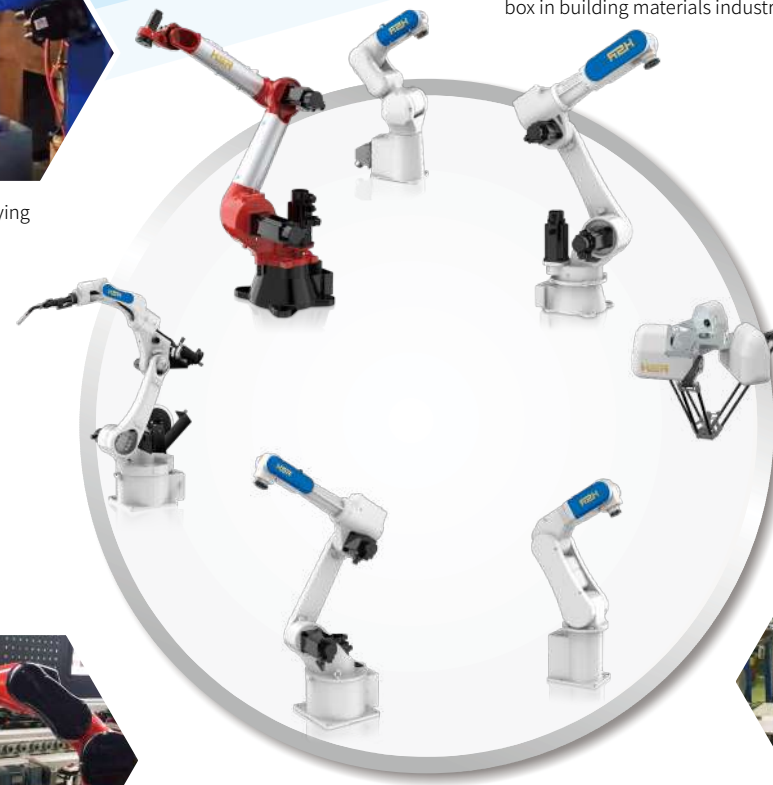
Parts loading and unloading



Loading and unloading hydraulic valve for machine



Injection molding machine loading and unloading



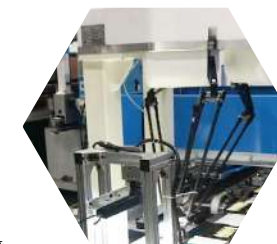
Automatic loading and unloading system for water grinder in tool industry



Garbage palletizing in environmental protection industry



Food industry application



Ice cream scoop sorting in the food industry



Robot Upside Down Sorting



Packing peanuts



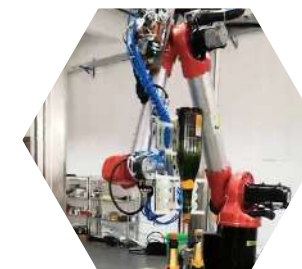
Pharmaceutica preparationl industry application



3D visual reclaiming



Grouting loading and unloading of ceramic flowerpots



Champagne box loading and unloading in the beverage industry

Other industries application case

Quality is the unshakable foundation.
It is also our dedication to perfection.

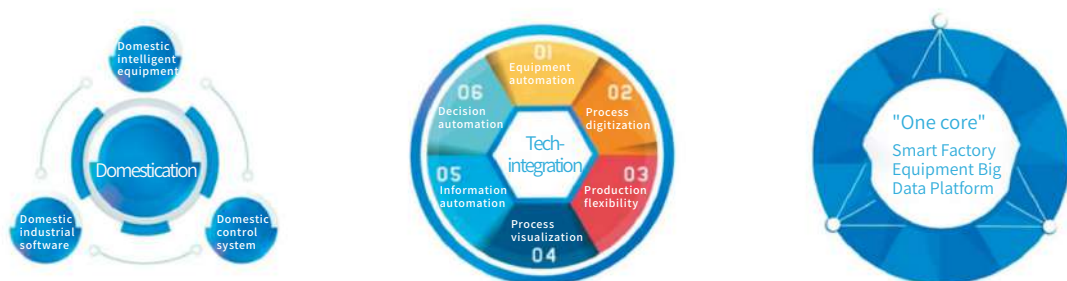
Fully automatic factory manufacture solution

Quality is the unshakable foundation.
It is also our dedication to perfection.

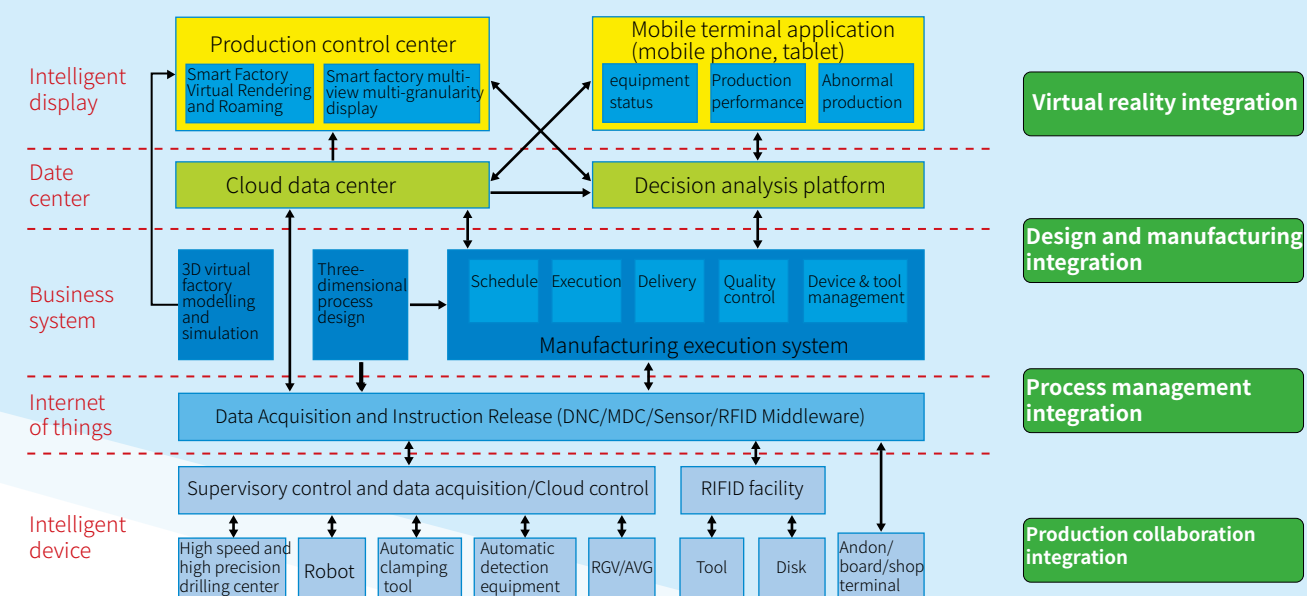
◆ The pictures below shows one of our client's smart factory which has 10 automatic drilling and tapping production line. This factory now has 180 Huashu HNC-818AM high speed drilling and tapping machines, 120 Huashu robots, 30 RGV and 10 AGV transport vehicles, one automatic raw material examine system. At the meantime, all these devices are also equipped with fully domestic developed industrial software, including Huazhong Numerical Control new generation cloud control platform, CAP, APS advance planning system, MES manufacture management system, 3D analogue system etc. As a result, this factory became the demonstration site of Chinese Intelligent Manufacture chosen the Ministry of Industry and Information Technology and the Chinese Academy of Engineering.



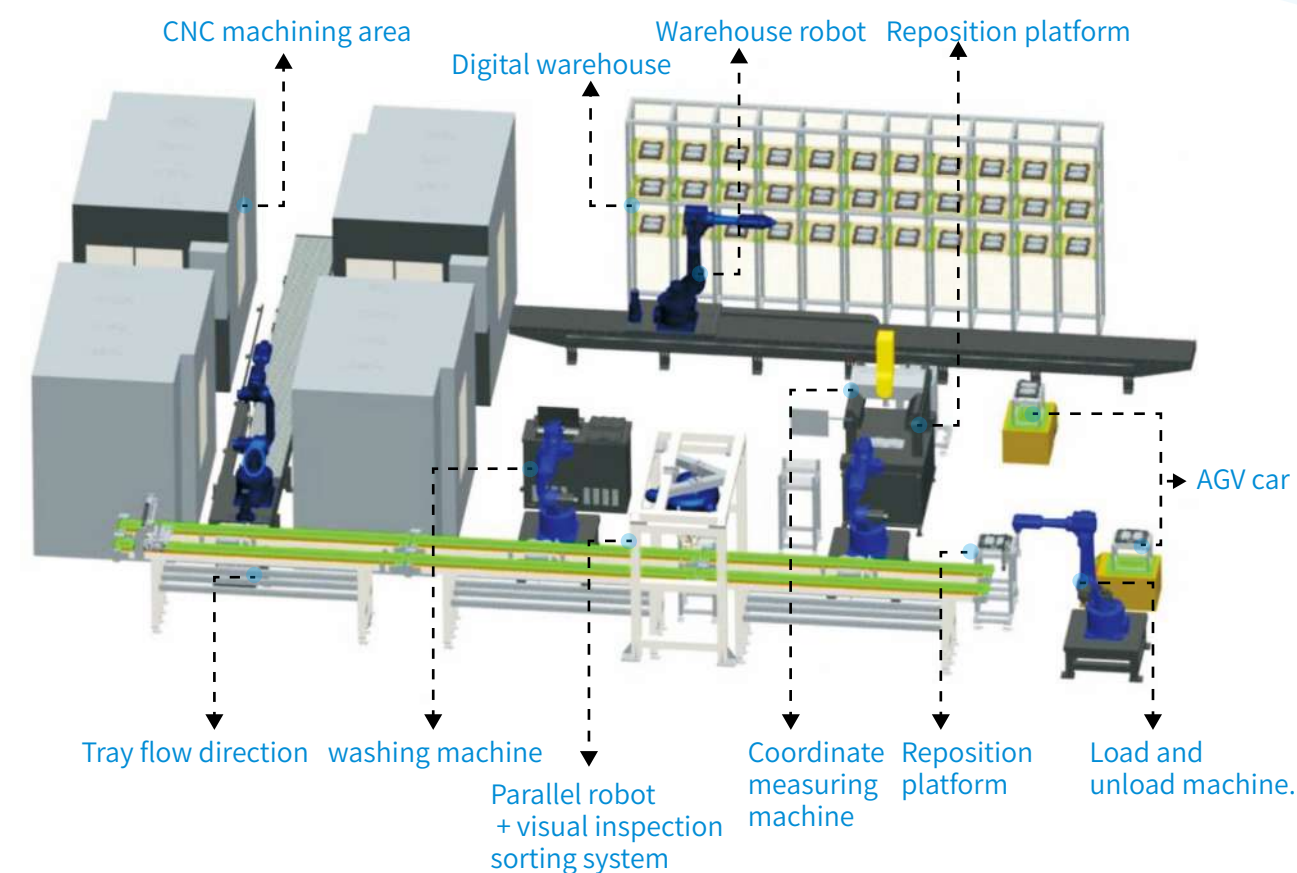
"Domestication" "Tech-integration" "One core"



1. One core



2. Floor plan



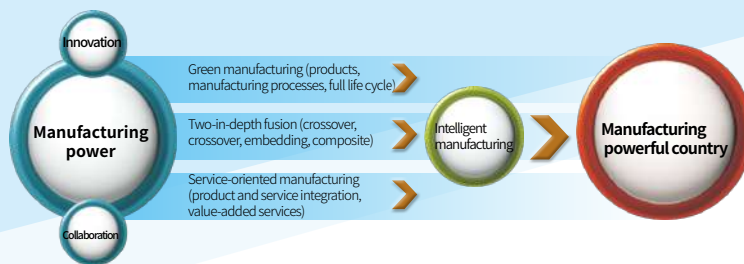
3. Overview

As the integrated automation solution for the unmanned automatic processing production line, Huashu combines the 612, 620 series robot and the AGV vehicle to realize the transportation between each processing step. The whole production line controlled by a Huashu developed terminal control system. At the meantime, the manufacture data can connect to the ERP management system, helping the factory to achieve the goal of digital management.



Project background

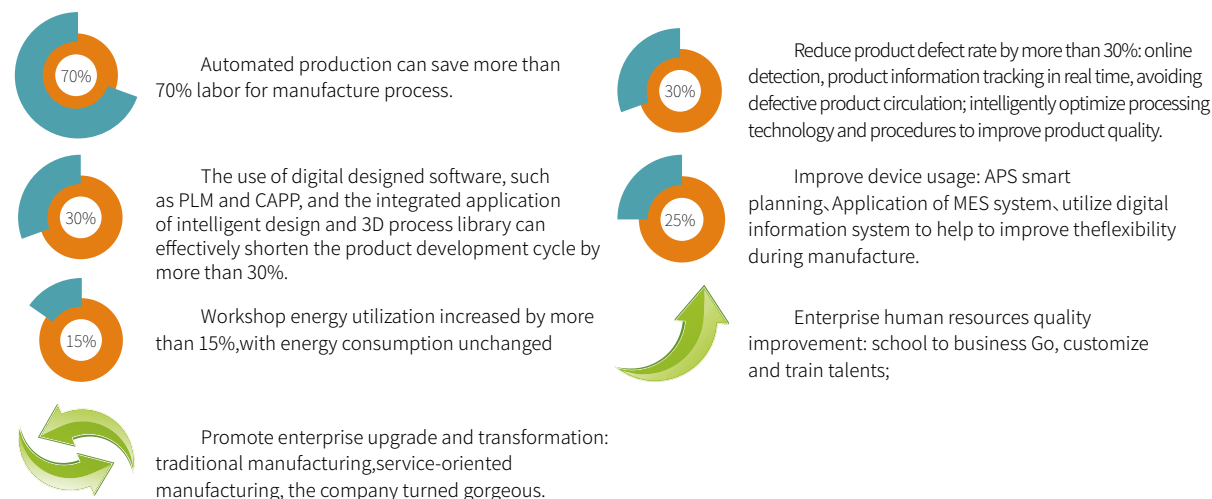
The application of intelligent manufacture for modern factory has become a trend worldwide. The 'Industry 4.0' integrates the technology of Internet, computational technology, communication technology, software and automation technology to transform traditional production technology and processes, in order to improve the intelligence of manufacture and establish the digital, Internet and smart unmanned (few workers) factory.



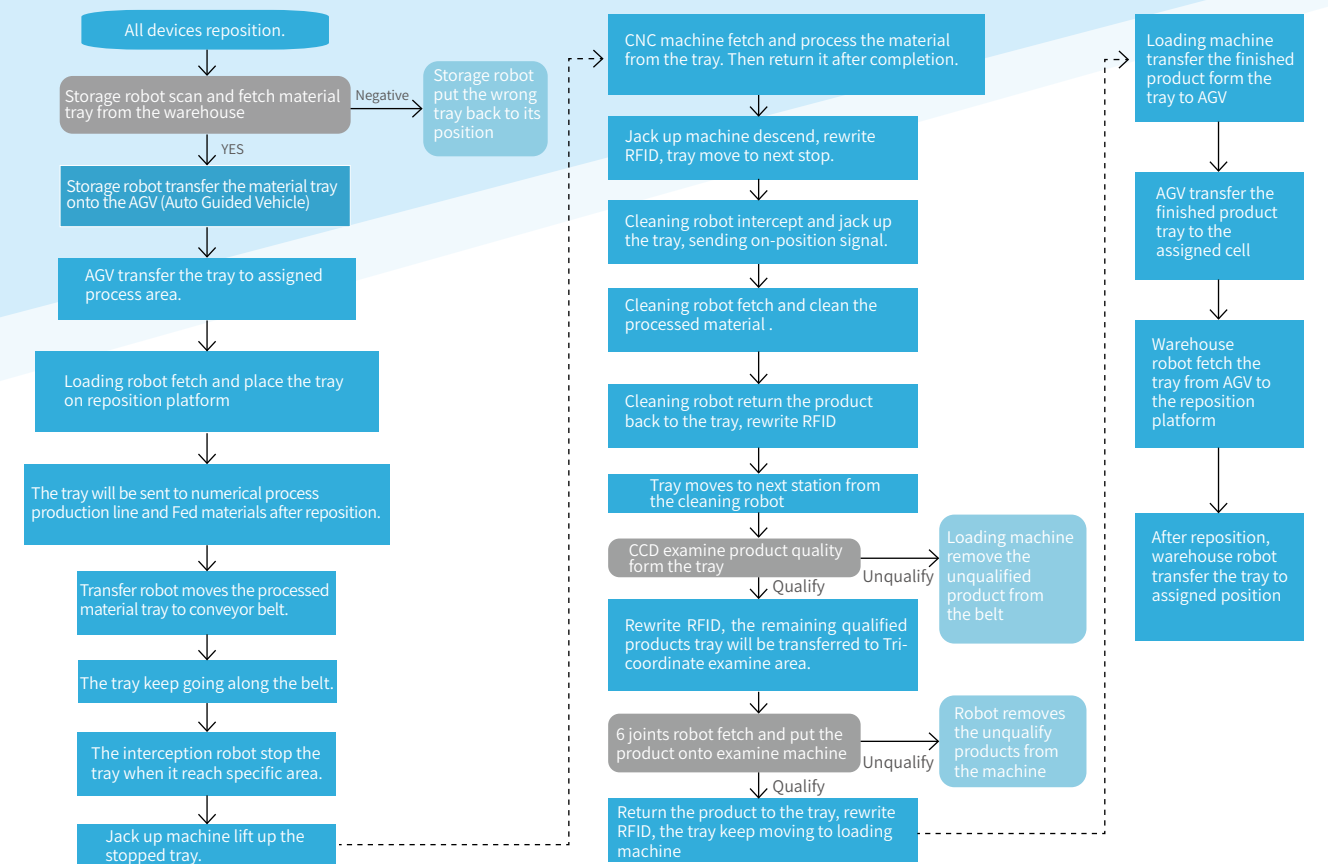
Project value

- ◆ Reduce management cost: Smart factory tightly follows the directive of 'Made in China 2025', carrying distinctive feature and advancedness. Smart factory can significantly reduce the management cost, making the corporation more flexible and competitive.
- ◆ Reduce manufacture cost: Smart factory can reduce 70% of need in labor force with more than 99% of pass, 20% lower cost on material. It also helps shorten the development period, resulting higher manufacture efficiency.
- ◆ Improve product quality: Smart factory has significant advantages in terms of productivity, quality stabilities and improving product competitive compared to the traditional factory.
- ◆ Improve factory competency: Smart factory covers various fields including: CNC process, Robotic control, Electric, Statistic, Management etc. With the open source platform feature, scholars and professionals can conduct more deep-in research independently.

Project significance



4. Flow chart



5. Other projects

◆ This project is one of the 2016 demonstration project of 'Intelligence Manufacture' for the Ministry of Industry and Information Technology. This project integrates the use of big data, cloud platform, ERP, MES, WMS, PLM, 3D modelling, augmented reality simulation and indigenous CNC software. It tremendously improves the production quality of servo motor digitalized factory, and promotes the informatization, intelligence and collaboration of the company.



◆ This is the 2016 demonstration project of new manufacture standardization shown by the Ministry of industry and information technology. This project includes 200 sets of Huashu high speed drilling and tapping equipments, 106 Huashu robots, 10 AGV carts, 20 automatic conveyor belts and a series of smart industrial software application. Comparing with the traditional factory, this project can reduce 60% labor force and lower 20% of product reject ratio.

Memo

[illegible]

Memo

[illegible]