



WeChat Official Account

Official Website: [www.hsrobotics.cn](http://www.hsrobotics.cn)  
Service Hotline: 400-9655-321



**佛山华数机器人有限公司**  
**Foshan Huashu Robotics Co.,Ltd.**

Address: No. 19 Taoyuan East Road,  
Nanhai District, Foshan, Guangdong  
Postcode: 528234  
Phone: 0757-81991729  
Facsimile: 0757-81991726  
Email: [huashu@hzncc.com](mailto:huashu@hzncc.com)

**深圳华数机器人有限公司**  
**Shenzhen Huashu Robotics Co.,Ltd.**

Address: Shenzhen Nanshan District of Science and  
Technology production and research base  
Postcode: 518000  
Phone: 0755-26733753  
Facsimile: 0755-26723082  
Email: [sz-adm@hzncc.com](mailto:sz-adm@hzncc.com)

**泉州华数机器人有限公司**  
**Quanzhou Huashu Robotics Co.,Ltd.**

Address: No. 518 Beiqing East Road, Feng Ze  
District, Quanzhou, Fujian  
Postcode: 0595-28857066  
Phone: 0595-28857066  
Email: [quanzhou@hzncc.com](mailto:quanzhou@hzncc.com)

**宁波华数机器人有限公司**  
**Ningbo Huashu Robotics Co.,Ltd.**

Address: No. 128 xingyong Road, Jiangbei  
District, Ningbo, Zhejiang  
Postcode: 315031  
Phone: 0574-87286790  
Facsimile: 0574-87280970  
Email: [ningbo@hzncc.com](mailto:ningbo@hzncc.com)

**重庆华数机器人有限公司**  
**Chongqing Huashu Robotics Co.,Ltd.**

Address: No.5-69, TianShui Yunhan avenue, Beipei  
District, Chongqing City,China  
Postcode: 400714  
Phone: 023-88026882  
Facsimile: 023-88537332  
Email: [huashu@hzncc.com](mailto:huashu@hzncc.com)

**东莞华数机器人有限公司**  
**Dongguan Huashu Robotics Co.,Ltd.**

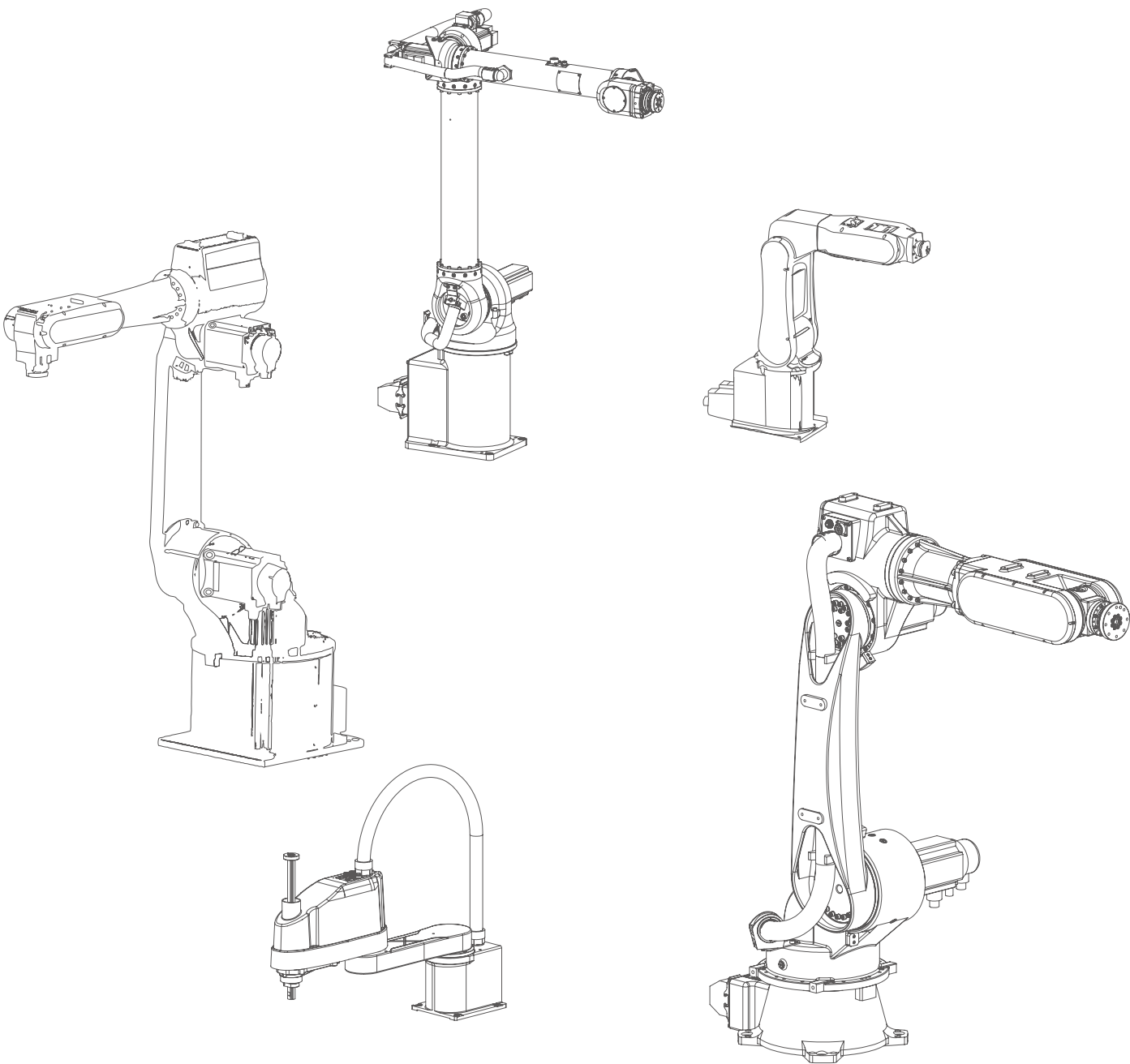
Address: Industrial Road, Dongguan Songshan Lake  
high tech Industrial Development Zone No. 6  
Postcode: 523843  
Phone: 0769-82986658  
Facsimile: 0769-22242945  
Email: [zhumin@hzncc.com](mailto:zhumin@hzncc.com)

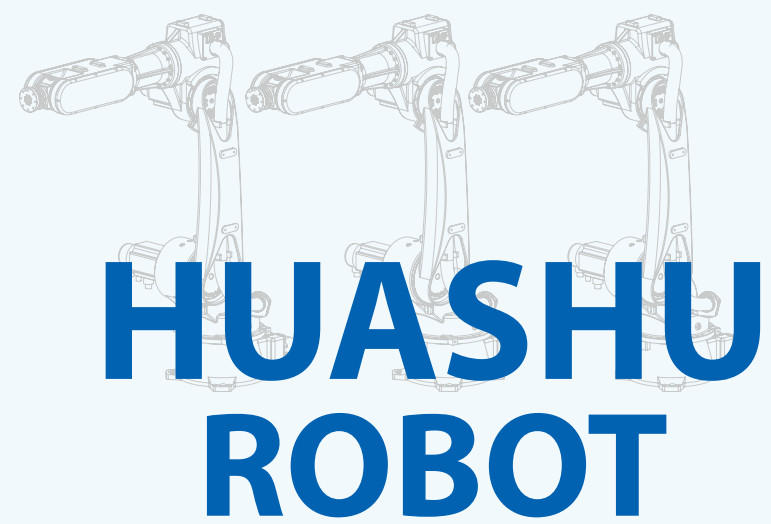
**苏州华数机器人有限公司**  
**Suzhou Huashu Robotics Co.,Ltd.**

Address: No. 16, science and Technology  
City, Suzhou hi tech Zone 116  
Postcode: 0512-68078056  
Phone: 0512-68078056  
Email: [chuww@hzncc.com](mailto:chuww@hzncc.com)

**武汉华中数控股份有限公司**  
**Wuhan Huazhong Numerical Control Co.,Ltd.**

Address: Wuhan science and Technology Park, Huazhong  
University of Science and Technology  
Postcode: 430223  
Phone: 027-87180025  
Facsimile: 027-87180306  
Email: [market@huazhongcnc.com](mailto:market@huazhongcnc.com)





Equipping "China Intelligent Manufacturing" with "Advanced Industrial Robots".

## Strategic Approach

- Market-oriented
- Innovation-oriented
- Quality-oriented
- Life-oriented and Talent-based







DEVELOPMENT  
DOMESTIC ROBOT  
INDUSTRY IS OUR RESPONSIBILITY



Production base



Production base

Huashu Robot is a subsidiary of Wuhan Huazhong Numerical Control Co., Ltd. (stock code: 300161). It has subsidiaries in Foshan, Chongqing, Shenzhen, Dongguan, Ningbo, Suzhou and Quanzhou. Its main business involves the development, production and sales of industrial robots. Automated production solutions for various industries have won many awards such as high-tech enterprises, academician workstations, and doctoral service stations. At present, the production base, R&D center, testing center and exhibition center have been completed.

Since the establishment of Huashu Robot, it has been committed to creating a national brand industrial robot with independent innovation, and adhering to the user-centered, focusing on market application, taking quality as life and taking core functional components as our tenet, relying on Wuhan Huazhong Numerical Control Co., Ltd. and Foshan Intelligent Equipment Technology Research Institute, we have developed a "PCLC" industrial robot development strategy: Taking the general multi-joint industrial robot product (P) as the main direction, taking the domestic robot core component (C) research and development and industrialization as the breakthrough, the industrial robot automation line (L) application as the goal, and the intelligent cloud platform (C) as the The industry's surprisingly successful weapon, focusing on the development of robot body and machine performance and reliability, and actively application development such as automation, intelligence, and smart factories.

Already it has an annual production capacity of 10,000 industrial robots.

The Huashu Robot has six series of robots with 30 specifications and has developed nearly 10 specifications of robot core components such as robot controllers, teach pendants and servo drives. Its products have been widely used in Foshan, Chongqing, Dongguan, Shenzhen, Quanzhou, Wuhan, Suzhou, Ningbo, Shenyang, Fuyang, Ezhou and other places, covering stamping, injection molding, machine plus blanking, welding, spraying, polishing, Polishing, etc.

The Huashu Robot is deeply integrated into the construction of the National Robot Integration Innovation Center, which encourages enterprises to actively participate in the "Made in China 2025" to promote the research and development, production and promotion of industrial automation production equipment, promote industrial upgrading and transformation, and improve industrial competitiveness. Huashu Robot strives to be the leader in the development, manufacturing and application of industrial robot products in China, the best engineering contractor for robotic automation solutions, and the best provider of intelligent manufacturing and smart factory solutions.



## Development History

Quality is the foundation, and the foundation is not firmly shaken.  
Quality is life, if life is not guaranteed, how to talk about development!

In the same boat, you walk together, grow all the way,  
all the way. Honor records the footsteps of history,  
wonderfully written in the moment.

1980

Huazhong University of Science and Technology began research on robot control technology.

2006

★ Shenzhen Huazhong CNC Co., Ltd. was established and renamed as Shenzhen Huashu Robot Co., Ltd. in 2013.

2013

★ Huazhong CNC entered the field of industrial robots and registered the "Huashu Robot" brand. Chongqing Huashu Robot Co., Ltd. was established. In April of the same year, Dongguan Huashu Robot Co., Ltd. was established.

2014 June

The Huashu Robot was successfully launched. In the same period, the Huashu Robot first production test online.

2015 May

★ Quanzhou Huashu Robot Co., Ltd. and Quanzhou Intelligent Research Institute were established.

2015 September

The Huashu Robot II control system was released, which marked the first flight of the core component of our robot.

2016 March

The company independently developed five series of more than 30 kinds of robot whole products to achieve mass production and application.

2017

The layout of Huashu Robot is basically completed in the whole country, covering the large areas of North China, East China, South China and the West. The robots produced by China Digital have been applied in large quantities in the fields of home appliances, 3C, polishing, automobile and motorcycle, assembly and injection molding.

2018 June

A new generation of intelligent robots released.

2019 May

The collaborative robot has been officially released.

2017

The BR6 series double-rotary robot, the first domestically proposed double-rotation mode and structure, won the "Oscar-2017 China Good Design [Silver Award]" in the Chinese design field in November, and won the Guangdong Industrial Robot Outstanding Contribution Award with BR6 as the main body.

2016 December

★ Changzhou Huashang Robot Co., Ltd. was established.

2016 November

★ Ningbo Huashang Robot Co., Ltd. was established.

2015 October

★ Huazhong CNC acquired Jiangsu Jinming Industrial Robot Automation Co., Ltd., which specializes in robot system integration, to further expand the application industry.

2015 August

★ Foshan Huashu Robot Co., Ltd. was established and started production in October 2015 based on the existing technology base of China.

2015

The self-developed 3 series of 11 robots have been mass-produced and sold, and the localization rate has reached more than 80%, making it the largest robot manufacturing enterprise in the Midwest.

2013 October

★ Suzhou Huashang Robot Co., Ltd. was established.

2009

Huazhong CNC industrial robots began to be used in automotive parts, precision machining and other fields.

1998

Huazhong CNC undertook the technical foundation of Huazhong University of Science and Technology and the National CNC System Engineering Technology Research Center, and completed the development of Huazhong-type teaching robots.





## Service Network

No matter when and where the service is always the same.

### Intellectual Property

Through independent research and development, it has overcome many core key technologies in industrial robot control, drive, design, application, automation, engineering, etc., and formed more than 300 independent property rights to fill a number of domestic gaps.



### High-tech products / Innovative products



- ◇ 双旋机器人荣获“广东省高新技术企业产品”称号
- ◇ HSR-JR612机器人荣获“广东省高新技术企业产品”称号
- ◇ 工业机器人职业技能竞赛平台荣获“广东省高新技术企业产品”称号
- ◇ HSR-BR双旋机器人荣获“广东省高新技术企业产品”称号
- ◇ HSR-HC410机器人荣获“广东省高新技术企业产品”称号
- ◇ SCARA机器人荣获“广东省高新技术企业产品”称号
- ◇ HSR-BR双旋机器人荣获“最具创新产品奖”称号
- ◇ 30KG6轴机器人荣获“广东省高新技术企业产品”称号
- ◇ 理实一体化机器人荣获“广东省创新产品”称号
- ◇ 5KG6轴机器人荣获“广东省高新技术企业产品”称号
- ◇ 模块化本体装调机器人荣获“广东省创新产品”称号
- ◇ 模块化电气装调机器人荣获“广东省创新产品”称号
- ◇ HSR-JR620机器人荣获“广东省高新技术企业产品”称号
- ◇ 模块化本体装调机器人荣获“广东省创新产品”称号
- ◇ 模块化电气装调机器人荣获“广东省创新产品”称号

### Robot technology patent



- ◇ numerical method for obtaining the inverse kinematics of the segment freedom serial robot with offset joints
- ◇ Mobile phone shell grinding workstation based on industrial robot
- ◇ A method for storing double-buffer robot software logs
- ◇ Flexible positioning system
- ◇ Six-axis robot capable of flexible wiring
- ◇ Copying tube for anti-holding and anti-slip in negative pressure groove
- ◇ Control system of industrial robots
- ◇ About the grinding wheel with constant radial pressure controlled by servo drive device
- ◇ Auxiliary arm of the punching robot on the press line
- ◇ Automatically polishing system based on robot
- ◇ Blasting system of the edge conveying equipment is used for metal stamping
- ◇ A transport robot that can be automatically loaded and unloaded on a pier
- ◇ Robot application teaching platform and its control system
- ◇ Multi-point industrial robot base
- ◇ The invention of the general SCARA robot
- ◇ TCP calibration method of industrial robots
- ◇ Control method of front and rear axle drive electric vehicle in regenerative braking process
- ◇ Robotic control system for spraying
- ◇ A joint robot
- ◇ Robotic multi-functional fixture
- ◇ The conveying drum line of the carton
- ◇ Robotic paper card suction cup fixture
- ◇ Multi-point industrial robot base with high protection
- ◇ Automated assembly line
- ◇ Modular automatically paper feeding board of robot
- ◇ Adjustable paper card storage mechanism
- ◇ Adjustable robotic table
- ◇ Automated assembly and packaging line
- ◇ Intelligent sampling workstation of industrial robots
- ◇ .....

### Served Huazhong CNC DIVY CNC machine control software



- ◇ A motor electric field phase zero correction system and calibration method
- ◇ A Test system and method for servo driver frequency response
- ◇ Circuit for suppressing surge current by PTC resistor
- ◇ A utility model of inverter based on single-tube IGBT inverter
- ◇ Multi-channel data transmission and method based on single-chip asynchronous serial port
- ◇ (New type) isolated DC power supply 201621170925.1 the patent certificate
- ◇ A high-power multi-purpose three-phase voltage supply system
- ◇ Stator of motor
- ◇ Mixed iron core motor
- ◇ Motor of AC permanent magnet servo motor
- ◇ Motor of permanent magnet synchronon motor

### Software copyright



- ◇ Servo driver auxiliary debugging Software copyright
- ◇ Hardware monitoring platform software
- ◇ Huashu Robotic control system V1.0 for small appliance assembly line
- ◇ Huashu Robotic automation master control software system v2.0.503
- ◇ Servo drive control system of industrial robot
- ◇ Debugging platform of Control Assistant system for Huashu III Controller
- ◇ Huashu Robotic control system V1.0 for stamping line
- ◇ Huashu Robotic control system V1.0 for applying to the teaching platform
- ◇ .....



### Business Distribution

With the continuous development of Huashu Robot, the service network has gradually covered all parts of the country. At the same time, Huashu Robot has developed a strict and systematic service standard system, which provides unified standardization management for production, sales and service outlets, and provides comprehensive technical training services and timely pre-sales and after-sales services for users in various regions with long-term resident mode. service.

### Service System

Directly facing the user's service terminal is an important support for the promotion and development of the Chinese digital robot brand. It also enables each user to truly experience the high-quality service of the Chinese robot in any place with Chinese products.



## 3 C Industry The application case

Quality is the foundation, and the foundation is not firmly shaken.  
Quality is life, if life is not guaranteed, how to talk about development!

### Professional Solution

The Huashu Robot not only provides products, but also focuses on providing professional solutions for users in different industries and different applications. Become a partner in the enterprise to grasp the market opportunities.

### Perfect innovation system

Based on the market, Huashu Robot invigorates the company's development through institutional innovation, management innovation, technological innovation and cultural innovation, and builds a modern company that adapts to the market economy. For many years, Huashu Robot has been adhering to the principle of independent research and development, keeping up with the development trend of domestic and foreign industries, and constantly introducing new products and applications.





## CNC The application case

Quality is the foundation, and the foundation is not firmly shaken.  
Quality is life, if life is not guaranteed, how to talk about development!

### Professional Solution

The Huashu Robot not only provides products, but also focuses on providing professional solutions for users in different industries and different applications. Become a partner in the enterprise to grasp the market opportunities.

### Perfect innovation system

Based on the market, Huashu Robot invigorates the company's development through institutional innovation, management innovation, technological innovation and cultural innovation, and builds a modern company that adapts to the market economy. For many years, Huashu Robot has been adhering to the principle of independent research and development, keeping up with the development trend of domestic and foreign industries, and constantly introducing new products and applications.

## Home appliance industry The application case

Quality is the foundation, and the foundation is not firmly shaken.  
Quality is life, if life is not guaranteed, how to talk about development!





## The car industry The application case

Quality is the foundation, and the foundation is not firmly shaken.  
Quality is life, if life is not guaranteed, how to talk about development!

### Professional Solution

The Huashu Robot not only provides products, but also focuses on providing professional solutions for users in different industries and different applications. Become a partner in the enterprise to grasp the market opportunities.

### Perfect innovation system

Based on the market, Huashu Robot invigorates the company's development through institutional innovation, management innovation, technological innovation and cultural innovation, and builds a modern company that adapts to the market economy. For many years, Huada Robot has been adhering to the principle of independent research and development, keeping up with the development trend of domestic and foreign industries, and constantly introducing new products and applications.

## Other industries The application case

Quality is the foundation, and the foundation is not firmly shaken.  
Quality is life, if life is not guaranteed, how to talk about development!





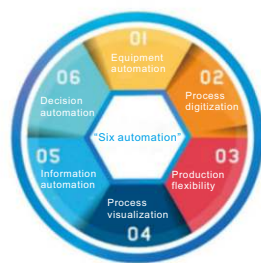
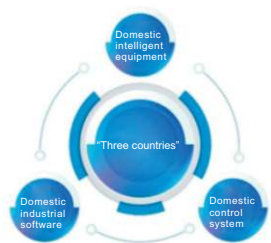
## Whole plant automation solution

Quality is the foundation, and the foundation is not firmly shaken.  
Quality is life, if life is not guaranteed, how to talk about development!

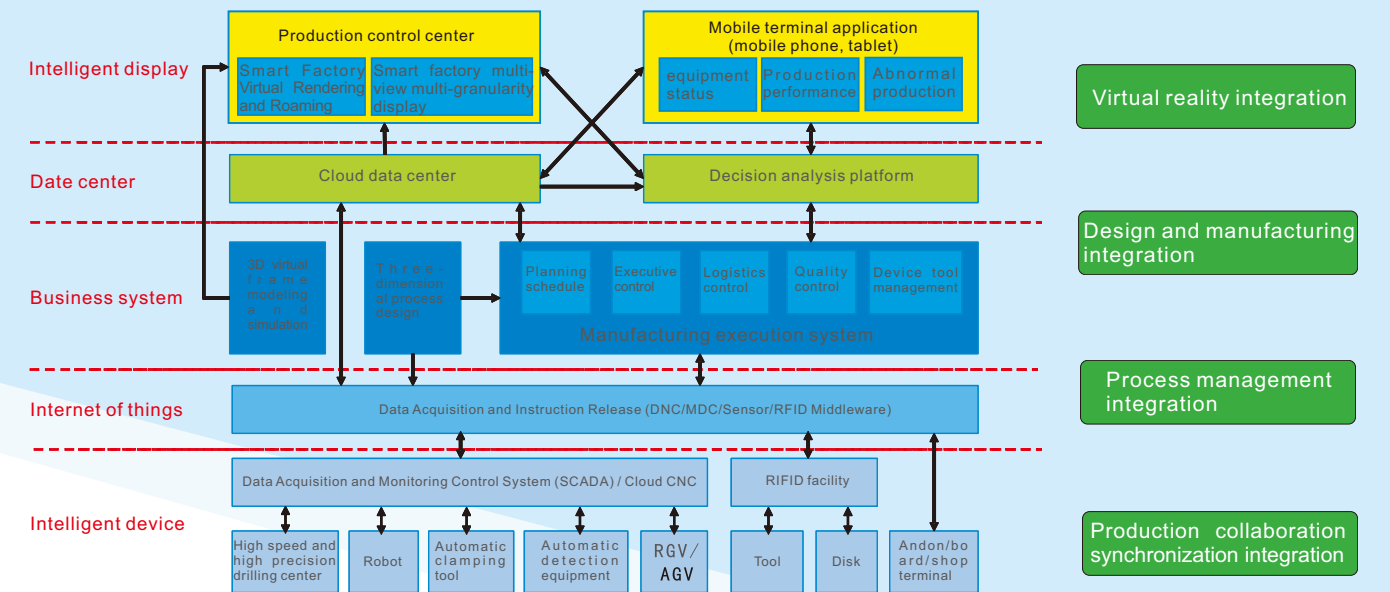
◆ A company has built an intelligent workshop with 10 automated drilling and attacking production lines. The intelligent workshop includes 180 domestic high-speed high-precision drilling and attack centers equipped with Huazhong CNC HNC-818AM system, 120 Chinese robots, 30 RGV, and 1 set. AGV trolley, 1 set of automatic batching detection system. At the same time, it is equipped with industrial software system of national production, including Huazhong CNC new generation cloud numerical control system platform, CAPP, APS advanced scheduling system, MES production management system, 3D virtual simulation system, etc., selected by the Ministry of Industry and Information Technology and the Chinese Academy of Engineering. The only demonstration site of the National Intelligent Manufacturing Pilot Model Exchange Conference.



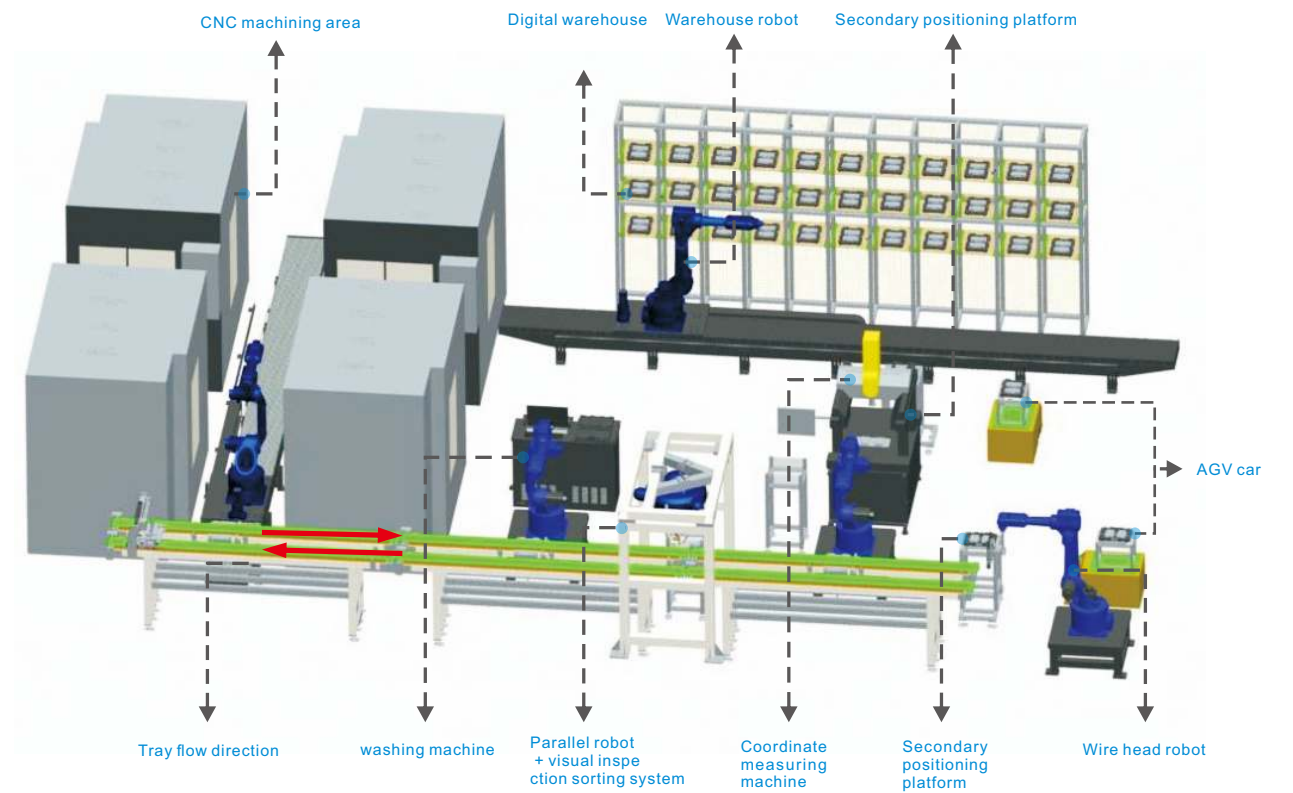
“Three countries” “Six automation” “One core”



## One core



## Floor plan





# Whole plant automation solution

Quality is the foundation, and the foundation is not firmly shaken.  
Quality is life, if life is not guaranteed, how to talk about development!

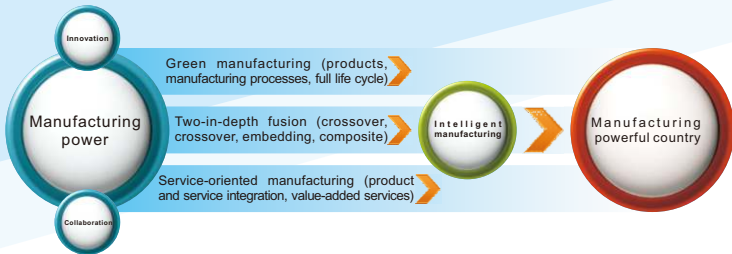
## Program overview

This system is an automated overall solution for unmanned automated machining and robotic connection. Through the use of China 612 and 620 series robots, RGV automatic car, the handling between machining is realized; the whole line is controlled by a main control system (Huazhong CNC system) to realize the automation of the workshop, and the robot and the whole The line master control system all adopts the Huazhong CNC system, which can connect the production data to the erp management system, realize the information management of the workshop, and further improve the workshop grade.



## Background of the project

The intelligent upgrade of the manufacturing industry has become a global development trend. "Industry 4.0" is the fourth industrial revolution led by intelligent manufacturing. In the manufacturing field, the traditional production process and production process are transformed through network technology, computer technology, information technology, software and automation technology, aiming at improving the manufacturing industry. Intelligent level, establish a smart factory with adaptability, resource efficiency and human factors engineering.



## Project value

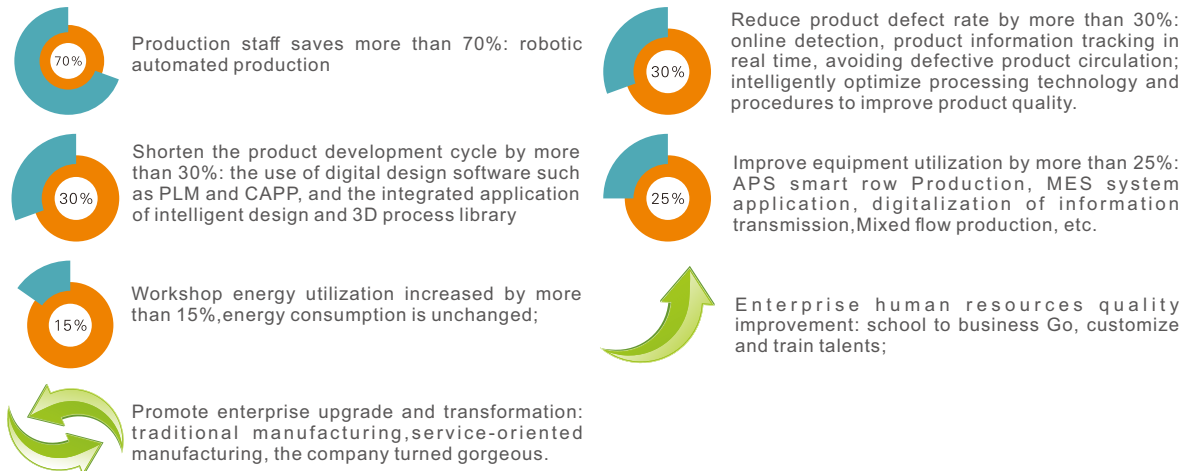
\*The smart factory program closely follows the main direction of "Made in China 2025", with distinctive features and advanced features. Will help attract better student resources and teachers, and enhance the overall "brand image" of the school.

\*Smart factory solutions cover CNC, robotics, machinery, electronics, electrical, automation, control, computers, software, information systems, statistics Knowledge in multidisciplinary fields such as management can be used as a comprehensive teaching and training platform for interdisciplinary schools;

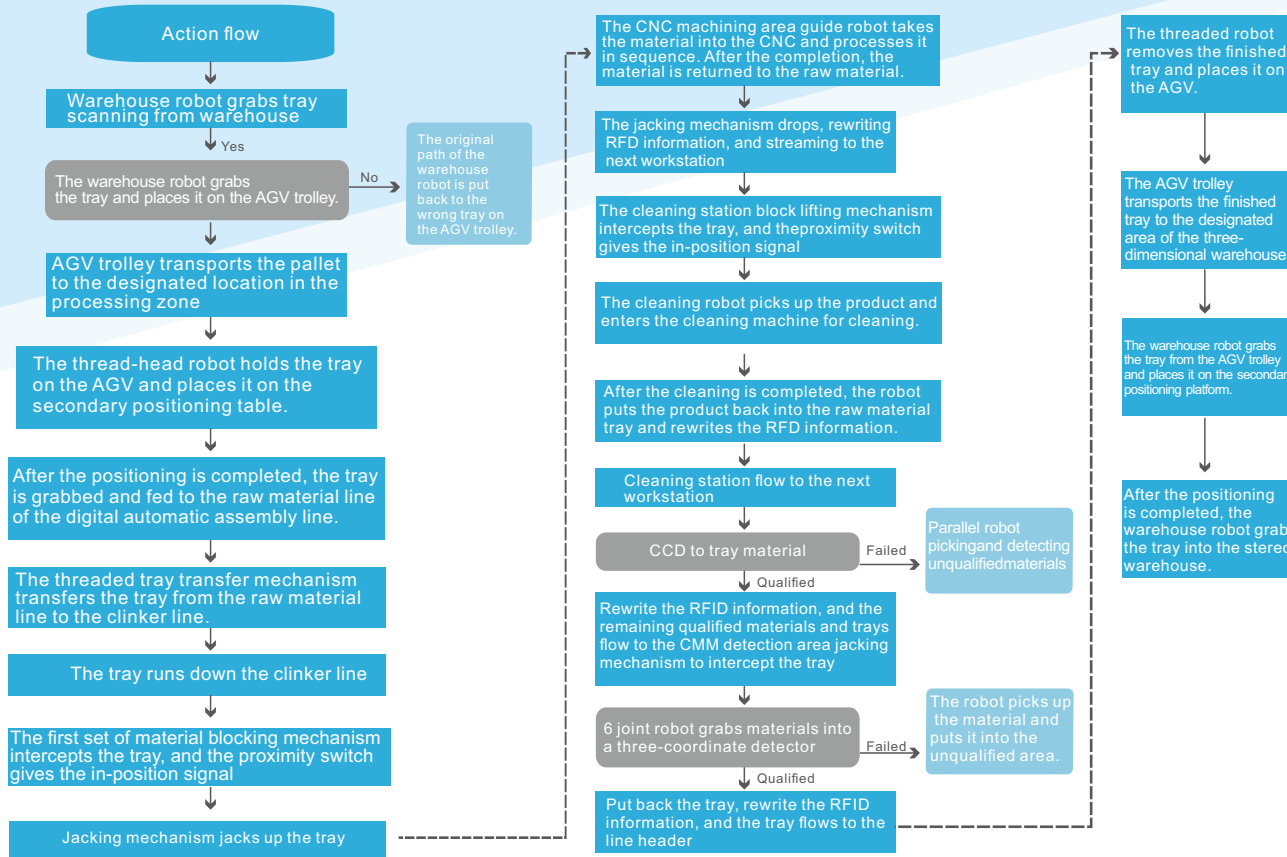
\*The smart factory solution can be used for daily teaching as well as for actual production and processing, which can enable students' ability and enterprise's demand for intelligent manufacturing talents.

\*The soft and hardware modules of the intelligent factory have good openness. Based on this platform, relevant professional teachers and students can carry out more in-depth independent research work.

## Project significance



## Action flow



An automotive electronic equipment adopts the overall factory automation solution designed and designed by our company. The whole project focuses on the automated production and intelligent detection of the body controller (BCM) and the vehicle engine temperature and pressure sensor (TMAP). Production and intelligent testing realize the traceability of each process of the product; reduce the labor while ensuring the stability of product quality, and greatly reduce the labor cost of the enterprise.



A smart factory workshop contains 200 sets of China Huazhong CNC high-speed drilling and attacking 106 Chinese robots, 10 AGV cars, 20 automatic conveyor lines, and a series of intelligent industrial software. After the project is completed, it will save more than 60% of the manpower. Reduce product defect rate by more than 20%.



# HSR-BR/JR Series

## Six-axis Joint Robot Main Parameter List



Product model		HSR-BR604/606/609	HSR-BR610	HSR-BR616	HSR-BR5110	HSR-JR603	HSR-JR605	HSR-JH605	HSR-JM612	HSR-JR612	HSR-JR620L	HSR-JR630	HSR-JR650L/680
Degree of freedom		6	6	6	5	6	6	6	6	6	6	6	6
Payload		4 / 6 / 9kg	10kg	16kg	110kg	3kg	5kg	5kg	12kg	12kg	20kg	30kg	50 / 80kg
Maximum moving radius		1402/1222/1042mm	1310mm	1599.6mm	2400mm	571.5mm	746mm	1441mm	1405mm	1555mm	1848mm	1701mm	2400 / 2200.4mm
Repeat positioning accuracy		±0.06 / ±0.05mm	±0.05mm	±0.05mm	±0.2mm	±0.02mm	±0.02mm	±0.06mm	±0.06mm	±0.06mm	±0.06mm	±0.05mm	±0.08 / ±0.07mm
Range of motion	J1	±155°	±155°	±154°	±180°	±180°	±200°	±150°	±170°	±170°	±160°	±160°	±180°
	J2	-178° /-2°	-178° /-2°	-178° /-2°	-180° /+80°	-160° /+10°	-180° /0°	-145° /+65°	-170° /+75°	-170° /+75°	-175° /+75°	-175° /+75°	-160° / 70°
	J3	+141.5° /+398.5°	+120° /+420°	+103° /+437°	+20° /+330°	-25° /+235°	+80° /+240°	+35° /+265°	+40° /+265°	+40° /+265°	+40° /+265°	+40° /+265°	+10° / 265°
	J4	±90°	±190°	±360°	±120°	±180°	±180°	±120° ( ±150° )	±180°	±180°	±180°	±180°	±360°
	J5	±96.5°	±150°	±161°	±360°	±105°	±115°	±105°	±125°	±108°	±125°	±125°	±110°
	J6	±360°	±360°	±360°	-	±360°	±360°	±360°	±360°	±360°	±360°	±360°	±360°
Rated speed	J1	240° /s,4.18rad/s / 240° /s,4.18rad/s / 222° /s,3.87rad/s	204° /s,3.56rad/s	157° /s,2.73rad/s	85° /s,1.48rad/s	262.5° /s,4.58rad/s	222° /s,3.87rad/s	148° /s,2.58rad/s	148° /s,2.58rad/s	148° /s,2.58rad/s	99° /s,1.73rad/s	99° /s,1.73rad/s	85° /s,1.48rad/s
	J2	200° /s,3.48rad/s / 200° /s,3.48rad/s / 175° /s,3.05rad/s	175° /s,3.05rad/s	145° /s,2.52rad/s	78° /s,1.35rad/s	262.5° /s,4.58rad/s	180° /s,3.14ad/s	148° /s,2.58ad/s	148° /s,2.58ad/s	148° /s,2.58rad/s	87° /s,1.52rad/s	87° /s,1.52rad/s	85° /s,1.48rad/s
	J3	240° /s,4.18rad/s / 240° /s,4.18rad/s / 198° /s,3.45rad/s	240° /s,4.19rad/s	178° /s,3.10rad/s	70° /s,1.22rad/s	262.5° /s,4.58rad/s	225° /s,3.93rad/s	148° /s,2.58rad/s	148° /s,2.58rad/s	148° /s,2.58rad/s	144° /s,2.51rad/s	144° /s,2.51rad/s	104° /s,1.81rad/s
	J4	300° /s,5.23rad/s / 300° /s,5.23rad/s / 225° /s,3.92rad/s	314° /s,5.48rad/s	221° /s,3.85rad/s	187.5° /s,3.27rad/s	262.5° /s,4.58rad/s	235° /s,4.1rad/s	225° /s,3.93rad/s	360° /s,6.28rad/s	360° /s,6.28rad/s	180° /s,3.14rad/s	180° /s,3.14rad/s	177° /s,3.08rad/s
	J5	300° /s,5.23rad/s / 300° /s,5.23rad/s / 225° /s,3.92rad/s	240° /s,4.19rad/s	180° /s,3.14rad/s	225° /s,3.93rad/s	262.5° /s,4.58rad/s	222° /s,3.87rad/s	225° /s,3.93rad/s	180° /s,3.93rad/s	225° /s,3.93rad/s	180° /s,3.14rad/s	180° /s,3.14rad/s	155° /s,2.7rad/s
	J6	480° /s,8.37rad/s / 480° /s,8.37rad/s / 360° /s,6.28rad/s	480° /s,8.38rad/s	360° /s,6.28rad/s	-	420° /s,7.33rad/s	360° /s,6.28rad/s	225° /s,3.93rad/s	360° /s,6.28rad/s	360° /s,6.28rad/s	225° /s,3.92rad/s	225° /s,3.92rad/s	187° /s,3.26rad/s
Maximum speed	J1	300° /s,5.23rad/s	240° /s,4.19rad/s	236° /s,4.12rad/s	128° /s,2.23rad/s	375° /s,6.54rad/s	370° /s,6.45rad/s	198.35° /s,3.44rad/s	198.35° /s,3.44rad/s	198.35° /s,3.44rad/s	148° /s,2.59rad/s	148° /s,2.59rad/s	127.5° /s,2.22rad/s
	J2	250° /s,4.36rad/s	250° /s,4.36rad/s	217° /s,3.78rad/s	116° /s,2.03rad/s	375° /s,6.54rad/s	300° /s,5.23rad/s	198.35° /s,3.44rad/s	198.35° /s,3.44rad/s	198.35° /s,3.44rad/s	109° /s,1.9rad/s	109° /s,1.9rad/s	127.5° /s,2.22rad/s
	J3	360° /s,6.28rad/s	300° /s,5.23rad/s	357° /s,6.23rad/s	105° /s,1.84rad/s	375° /s,6.54rad/s	375° /s,6.54rad/s	198.35° /s,3.44rad/s	198.35° /s,3.44rad/s	198.35° /s,3.44rad/s	172° /s,3.01rad/s	172° /s,3.01rad/s	104° /s,1.81rad/s
	J4	450° /s,7.85rad/s	392° /s,6.84rad/s	443° /s,7.72rad/s	225° /s,3.93rad/s	375° /s,6.54rad/s	391.6° /s,6.83rad/s	450° /s,7.86rad/s	600° /s,10.47rad/s	600° /s,10.47rad/s	300° /s,5.23rad/s	300° /s,5.23rad/s	177° /s,3.08rad/s
	J5	375° /s,6.54rad/s	300° /s,5.23rad/s	360° /s,6.28rad/s	300° /s,5.23rad/s	375° /s,6.54rad/s	370° /s,6.45rad/s	450° /s,7.86rad/s	300° /s,6.54rad/s	375° /s,6.54rad/s	300° /s,5.23rad/s	300° /s,5.23rad/s	155° /s,2.7rad/s
	J6	600° /s,10.46rad/s	600° /s,10.46rad/s	720° /s,12.56rad/s	-	600° /s,10.46rad/s	600° /s,10.46rad/s	450° /s,7.86rad/s	600° /s,10.47rad/s	600° /s,10.47rad/s	375° /s,6.54rad/s	375° /s,6.54rad/s	187° /s,3.26rad/s
Allowable moment of inertia	J6	0.15kgm²	0.15kgm²	0.15kgm²	-	0.05kgm²	0.1kgm²	0.035kgm²	0.17kgm²	0.17kgm²	0.8kgm²	0.8kgm²	25kgm²
	J5	0.23kgm²	0.42kgm²	0.85kgm²	11.31kgm²	0.05kgm²	0.36 kgm²	0.3kgm²	1.2kgm²	1.2kgm²	3.3kgm²	3.3kgm²	32.7kgm²
	J4	0.42kgm²	0.42kgm²	0.99kgm²	45.77kgm²	0.05kgm²	0.5 kgm²	0.3kgm²	1.2kgm²	1.2kgm²	8.7kgm²	8.7kgm²	32.7kgm²
Allowable torque	J6	12.7Nm	12.7Nm	12.7Nm	-	6.4Nm	8Nm	15Nm	15Nm	15Nm	30.7Nm	30.7Nm	330Nm
	J5	16.5Nm	20.4Nm	28.0Nm	327.89Nm	6.4Nm	16Nm	35Nm	35Nm	35Nm	73.4Nm	73.4Nm	340Nm
	J4	20.4Nm	20.4Nm	34.0Nm	707.92Nm	12.7Nm	18Nm	35Nm	35Nm	35Nm	140.4Nm	140.4Nm	400Nm
Applicable environment	temperature	0° C~45° C	0° C~45° C	0° C~45° C	0° C~45° C	0° C~45° C	0° C~45° C	0° C~45° C	0° C~40° C	0° C~45° C	0° C~45° C	0° C~45° C	0° C~45° C
	humidity	20%~80%	20%~80%	20%~80%	20%~80%	20%~80%	20%~80%	20%~80%	20%~80%	20%~80%	20%~80%	20%~80%	20%~80%
Teacher cable length		8M	8M	8M	8M	8M	8M	8M	8M	8M	8M	8M	8M
Body--cabinet connection line length		3M	3M	3M	8M	3M	3M	5M	6M	6M	6M	6M	8M
I/O parameters		Digital quantity:32 input,31 output			Digital quantity:32 input,32output	Digital quantity:32 input,31output		Digital quantity:32 input,31 output					
Battery capacity		2.6kVA	3kVA	4.3kVA	17kVA	0.8kVA	1.5kVA	2.5kVA	3.8kVA	3.8kVA	5.6kVA	5.6kVA	7.5kVA
Rated power / voltage / current		2.1kW / 220V / 11.3A	2.4kW / 220V / 13A	3.2kW / 220V / 17.1A	14kW / 380V / 20.77A	0.6kW / 220V / 3.2A	1.2kW / 220V / 6.5A	2kW / Single220V / 10.8A	3kW / 380V / 5.4A	3kW / 380V / 5.4A	4.5kW / 380V / 8.1A	4.5kW / 380V / 8.1A	6kW / 380V / 10.8A
Protection level		IP54	IP54 , The front of the armIP67	IP67	IP50	IP54	IP54	IP54	Ip54 / IP65(Wrist)	IP54 / IP65(Wrist)	IP54	IP54	Ip54 / IP65(Wrist)
Installation method		ground/upside down/side mount/Install in any direction			Ground mounts		ground/Upside down/Side mount/Install in any direction	Ground/Upside down/Side mount/Install in any direction	Ground/Side mount/Inverted installation	Ground mounts	Ground/Side mount/Inverted installation	Ground/Inverted installation	Ground/Inverted installation
Body weight		52 / 50 / 48kg	61kg	128kg	980kg	27kg	55kg	196kg	217kg	196kg	305kg	305kg	720kg



# HSR-HC/SR/DT Series

## Four-axis Joint Robot Main Parameter List



Product model		HSR-HC410	HSR-HC415	HSR-HC420	HSR-HC403	HSR-SR3400	HSR-SR6600	HSR-SR5700	HSR-DT401E	HSR-DT801B
Degree of freedom		4	4	4	4	4	4	4	4	4
Payload		10kg	15kg	20kg	3kg	3 / 1kg	6 / 2kg	5 / 2kg	1kg	1kg
Maximum moving radius		1402mm	1402mm	2000mm	585mm	400mm	600mm	700mm	200mm	400mm
Repeat positioning accuracy		±0.05mm	±0.05mm	±0.08mm	±0.02mm	±0.01mm	±0.02mm	±0.02mm	±0.1mm	±0.1mm
Range of motion	J1	±145°	±145°	±145°	0~145mm	±132°	±132°	±132°	5° /+125°	5° /+125°
	J2	±135°	±135°	±135°	±150°	±135°	±150°	±150°	5° /+125°	5° /+125°
	J3	±250mm	±250mm	±240mm	±180°	0~150mm	0~200mm	0~200mm	5° /+125°	5° /+125°
	J4	±180°	±180°	±180°	±360°	±360°	±360°	±360°	±360°	±360°
	J5	-	-	-	-	-	-	-	-	-
	J6	-	-	-	-	-	-	-	-	-
Rated speed	J1	225° /s,3.93rad/s	225° /s,3.93rad/s	108° /s,1.88rad/s	500mm/s	360° /s,6.28rad/s	225° /s,3.92rad/s	225° /s,3.92rad/s	514.2° /s,8.97rad/s	545.4° /s,9.51rad/s
	J2	225° /s,3.93rad/s	225° /s,3.93rad/s	148.76° /s,2.60rad/s	225° /s,3.925rad/s	470° /s,8.19rad/s	360° /s,6.28rad/s	420° /s,7.32rad/s	514.2° /s,8.97rad/s	545.4° /s,9.51rad/s
	J3	500mm/s	500mm/s	500mm/s	225° /s,3.925rad/s	710mm/s	666mm/s	666mm/s	514.2° /s,8.97rad/s	545.4° /s,9.51rad/s
	J4	180° /s,3.14rad/s	180° /s,3.14rad/s	225° /s,3.93rad/s	360° /s,6.28rad/s	1500° /s,26.16rad/s	1200° /s,20.93rad/s	1400° /s,24.42rad/s	3600° /s,62.82rad/s	3600° /s,62.82rad/s
	J5	-	-	-	-	-	-	-	-	-
	J6	-	-	-	-	-	-	-	-	-
Maximum speed	J1	300° /s,5.23rad/s	300° /s,5.23rad/s	216° /s,3.77rad/s	1000mm/s	530° /s,9.24rad/s	375° /s,6.54rad/s	335° /s,5.84rad/s	1028.5° /s,17.95rad/s	909° /s,15.86rad/s
	J2	375° /s,6.54rad/s	375° /s,6.54rad/s	198° /s,3.54rad/s	375° /s,6.54rad/s	700° /s,12.21rad/s	600° /s,10.46rad/s	600° /s,10.46rad/s	1028.5° /s,17.95rad/s	909° /s,15.86rad/s
	J3	830mm/s	830mm/s	667mm/s	375° /s,6.54rad/s	1065mm/s	1111mm/s	1111mm/s	1028.5° /s,17.95rad/s	909° /s,15.86rad/s
	J4	360° /s,6.28rad/s	360° /s,6.28rad/s	375° /s,6.54rad/s	588° /s,10.26rad/s	2600° /s,43.35rad/s	2000° /s,34.88rad/s	2000° /s,34.88rad/s	7200° /s,125.6rad/s	6000° /s,104.7rad/s
	J5	-	-	-	-	-	-	-	-	-
	J6	-	-	-	-	-	-	-	-	-
Allowable moment of inertia	J6	-	-	-	-	-	-	-	-	-
	J5	-	-	-	-	-	-	-	-	-
	J4	2kgm²	3kgm²	6.5kgm²	0.0283kgm²	0.05 / 0.005kgm²	0.12 / 0.01kgm²	0.12 / 0.01kgm²	-	-
Allowable torque	J6	-	-	-	-	-	-	-	-	-
	J5	-	-	-	-	-	-	-	-	-
	J4	40Nm	50Nm	90Nm	6.4Nm	3.29Nm	4.23Nm	4.23Nm	-	-
Applicable environment	temperature	0° C~45° C	0° C~45° C	0° C~45° C	0° C~45° C	0° C~45° C	0° C~45° C	0° C~45° C	0° C~45° C	0° C~45° C
	humidity	20%~80%	20%~80%	20%~80%	30%~95%	20%~80%	20%~80%	20%~80%	20%~85%	20%~85%
Teacher cable length		8M	8M	8M	Optional (if required, the teach pendant cable length is 8 meters)	Optional (if required, the teach pendant cable length is 8 meters)	Optional (if required, the teach pendant cable length is 8 meters)	Optional (if required, the teach pendant cable length is 8 meters)	No teaching device	No teaching device
Body-cabinet connection line length		6M	6M	6M	3M	3M	3M	3M	5M	5M
I/O parameters		Digital quantity:32 input,31 output			Digital quantity:32 input,31 output		Digital quantity:32 input,31 output		Digital quantity:24 input,24 output	
Battery capacity		2.3kVA	2.8kVA	5.6kVA	0.8kVA	0.6kVA	0.8kVA	0.8kVA	-	-
Rated power / voltage / current		1.8kW / 380V / 3.2A	2.2kW / 380V / 4A	4.5kW / 380V / 8.1A	0.6kW / 220V / 3.2A	0.5kW / 220V / 2.7A	0.6kW / 220V / 3.2A	0.6kW / 220V / 3.2A	1.8kW / 3PhaseAC380V / 3.3A	3kW / 3PhaseAC380V / 5.4A
Protection level		IP54	IP54	IP54	IP65	IP54	IP54	IP54	IP54	IP54
Installation method		Ground mounts	Ground mounts	Ground mounts	Ground/Desktop	Ground/Desktop	Ground/Desktop	Ground/Desktop	Desktop	Upside down
Body weight		230kg	250kg	280kg	24kg	15kg	21kg	22kg	85kg	110kg



HSR-BR
Birotation robot series

Introduction

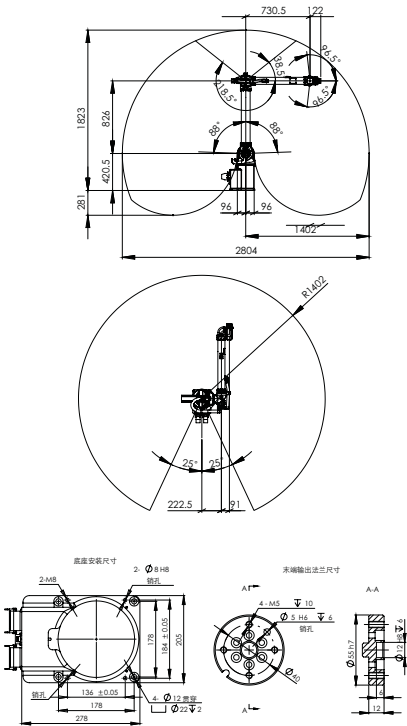
HSR-BR series robots break the traditional sports mode and use the unique innovative design of the world. On the basis of the universal six-axis robot, the BR series robots have the internal rotation function, which makes it easy to achieve a small spacing such as the drill center. It also requires robots with robotic arms to complete the connection or transportation between narrow space stations. The floor space is very small and the movement does not occupy the external space.

Product model		HSR-BR602	HSR-BR604	HSR-BR606	HSR-BR609
Degree of freedom		6	6	6	6
Payload		2kg	4kg	6kg	9kg
Maximum moving radius		1762mm	1402mm	1222mm	1042mm
Repeat positioning accuracy		±0.1mm	±0.06mm	±0.05mm	±0.05mm
Range of motion	J1轴	±155°	±155°	±155°	±155°
	J2轴	-178° /-2°	-178° /-2°	-178° /-2°	-178° /-2°
	J3轴	+141.5° /+398.5°	+141.5° /+398.5°	+141.5° /+398.5°	+141.5° /+398.5°
	J4轴	±90°	±90°	±90°	±90°
	J5轴	±96.5°	±96.5°	±96.5°	±96.5°
	J6轴	±360°	±360°	±360°	±360°
Rated speed	J1轴	180° /s,3.14rad/s	240° /s,4.18rad/s	240° /s,4.18rad/s	222° /s,3.87rad/s
	J2轴	150° /s,2.61rad/s	200° /s,3.48rad/s	200° /s,3.48rad/s	175° /s,3.05rad/s
	J3轴	180° /s,3.14rad/s	240° /s,4.18rad/s	240° /s,4.18rad/s	198° /s,3.45rad/s
	J4轴	300° /s,5.23rad/s	300° /s,5.23rad/s	300° /s,5.23rad/s	225° /s,3.92rad/s
	J5轴	300° /s,5.23rad/s	300° /s,5.23rad/s	300° /s,5.23rad/s	225° /s,3.92rad/s
	J6轴	480° /s,8.37rad/s	480° /s,8.37rad/s	480° /s,8.37rad/s	360° /s,6.28rad/s
Maximum speed	J1轴	300° /s,5.23rad/s	300° /s,5.23rad/s	300° /s,5.23rad/s	300° /s,5.23rad/s
	J2轴	250° /s,4.36rad/s	250° /s,4.36rad/s	250° /s,4.36rad/s	250° /s,4.36rad/s
	J3轴	360° /s,6.28rad/s	360° /s,6.28rad/s	360° /s,6.28rad/s	360° /s,6.28rad/s
	J4轴	450° /s,7.85rad/s	450° /s,7.85rad/s	450° /s,7.85rad/s	450° /s,7.85rad/s
	J5轴	375° /s,6.54rad/s	375° /s,6.54rad/s	375° /s,6.54rad/s	375° /s,6.54rad/s
	J6轴	600° /s,10.46rad/s	600° /s,10.46rad/s	600° /s,10.46rad/s	600° /s,10.46rad/s
Allowable moment of inertia	J6轴	0.15kgm²	0.15kgm²	0.15kgm²	0.15kgm²
	J5轴	0.23kgm²	0.23kgm²	0.23kgm²	0.23kgm²
	J4轴	0.42kgm²	0.42kgm²	0.42kgm²	0.42kgm²
Allowable torque	J6轴	12.7Nm	12.7Nm	12.7Nm	12.7Nm
	J5轴	16.5Nm	16.5Nm	16.5Nm	16.5Nm
	J4轴	20.4Nm	20.4Nm	20.4Nm	20.4Nm
Applicable environment	temperature	0° C ~ 45° C	0° C ~ 45° C	0° C ~ 45° C	0° C ~ 45° C
	humidity	20% ~ 80%	20% ~ 80%	20% ~ 80%	20% ~ 80%
Teacher cable length		8M	8M	8M	8M
Body-cabinet connection line length		3M	3M	3M	3M
I/O parameters		Digital quantity:32 input,32 output			
Battery capacity		2.6kVA	2.6kVA	2.6kVA	2.6kVA
Rated power / voltage / current		2.1kW / 220V / 11.3A	2.1kW / 220V / 11.3A	2.1kW / 220V / 11.3A	2.1kW / 220V / 11.3A
Protection level		IP54	IP54	IP54	IP54
Installation method		Ground/Upside down/Side mount/Install in any direction			
Body weight		56kg	52kg	50kg	48kg



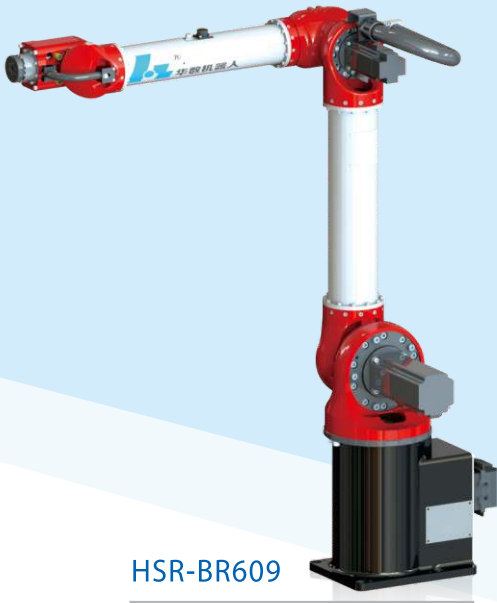
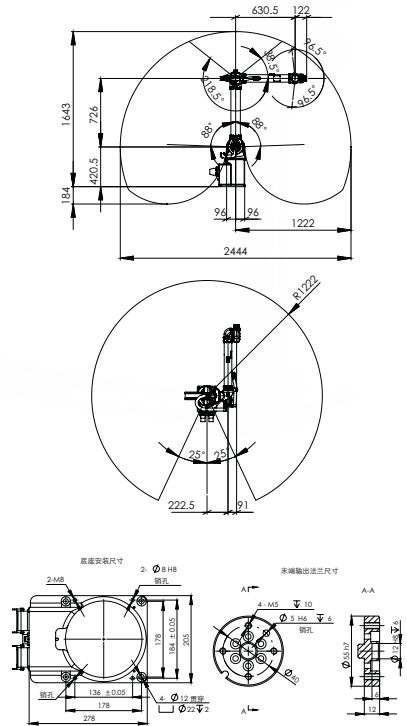
HSR-BR604

The map of ravel range



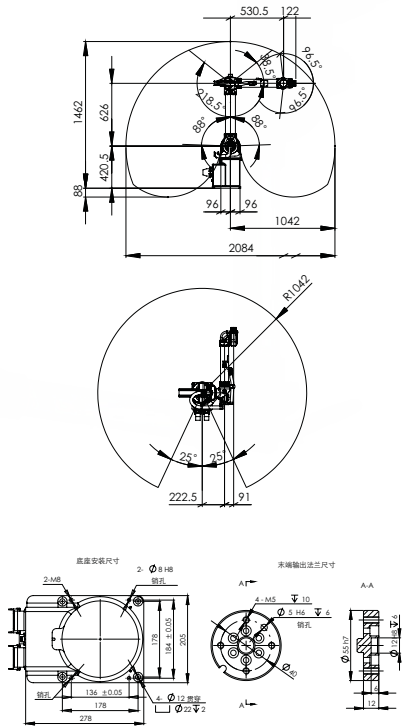
HSR-BR606

The map of ravel range



HSR-BR609

The map of ravel range

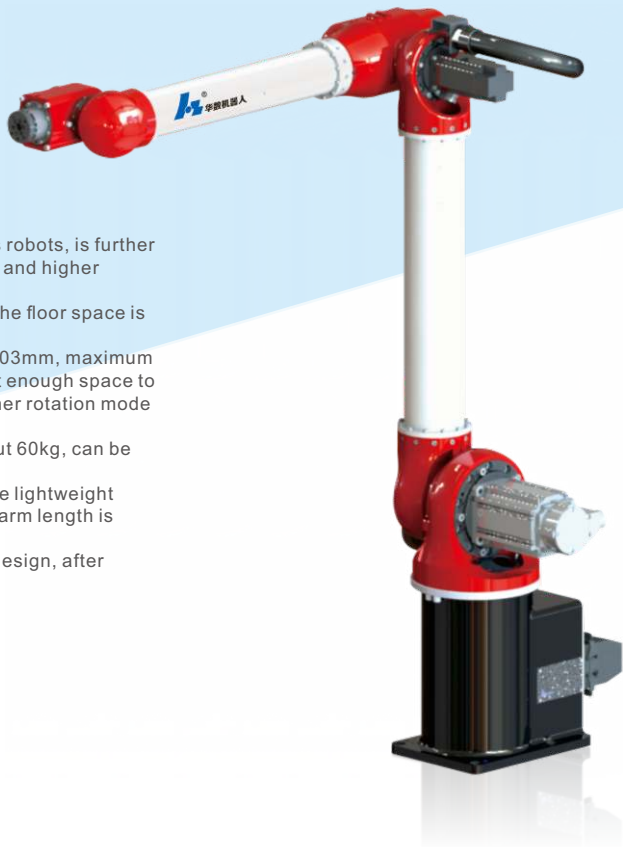




HSR-BR610
Birotation robot series

Introduction

The new generation of robots HSR-BR610, based on the BR series robots, is further optimized and upgraded, with faster speed, stronger load capacity and higher protection level.
1. Small installation area: The base of the robot is very small, and the floor space is less than 0.06m .
2, high precision, high flexibility: average repeatability of up to ± 0.03mm, maximum 0.05mm; not only has a universal 6-axis function, when there is not enough space to use the general robot usage function, you can also program the inner rotation mode to achieve another way to avoid
3, light weight, installation in any direction: the body weight of about 60kg, can be installed in any direction.
4, the arm length is larger, the load capacity is stronger: through the lightweight design, using high-speed motor, high-precision reducer, the robot arm length is increased to 1310mm, rated load 6kg, maximum load 10kg.
5, higher level of protection: after structural optimization, sealing design, after testing, arm front protection level reached IP67.



The map of ravel range

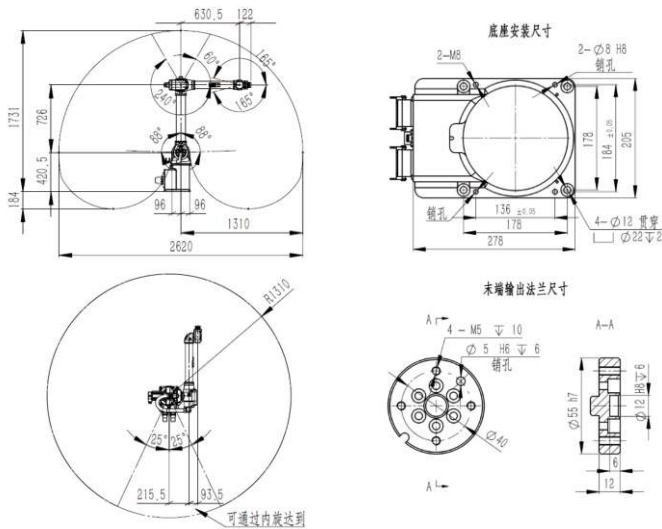
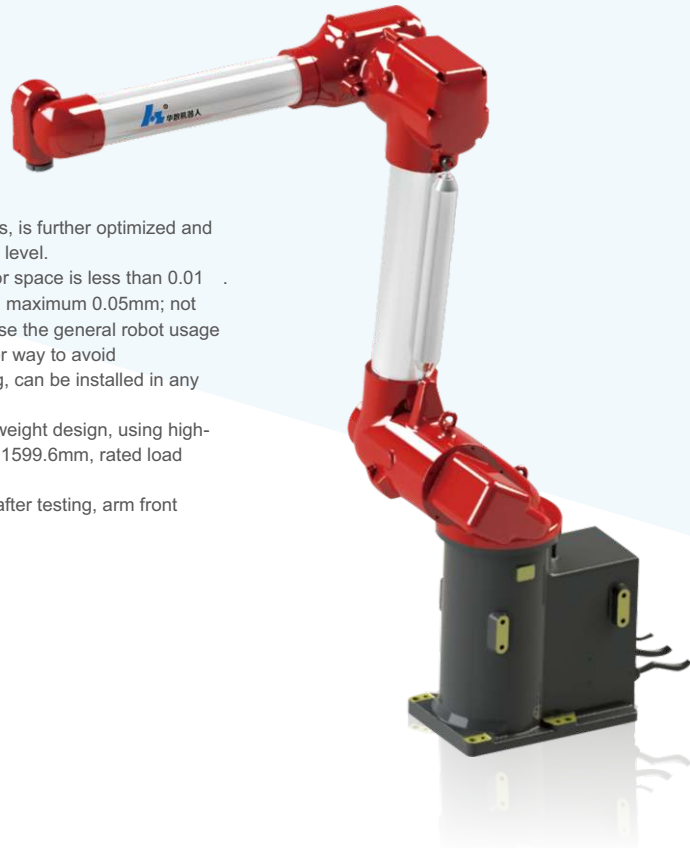


Table with 2 columns: Product model, HSR-BR610. Rows include: Control shaft (6), Payload (10kg), Maximum moving radius (1310mm), Repeat positioning accuracy (± 0.05mm), Range of motion (J1-J6 axes), Rated speed (J1-J6 axes), Maximum speed (J1-J6 axes), Allowable moment of inertia (J4-J6 axes), Allowable torque (J4-J6 axes), Applicable environment (temperature, humidity), Other (avoid contact with flammable, explosive or corrosive gases and liquids and away from electronic noise sources), Protection level (IP54, The front of the arm IP67), Installation method (Ground/Upside down/Side mount/ Install in any direction), Body weight (61kg).

HSR-BR616
Birotation robot series

Introduction

The new generation of robots HSR-BR616, based on the BR series robots, is further optimized and upgraded, with faster speed, stronger load capacity and higher protection level.
1. Small installation area: The base of the robot is very small, and the floor space is less than 0.01 .
2.high precision, high flexibility: average repeatability of up to ± 0.04mm, maximum 0.05mm; not only has a universal 6-axis function, when there is not enough space to use the general robot usage function, you can also program the inner rotation mode to achieve another way to avoid
3.light weight, installation in any direction: the body weight of about 128kg, can be installed in any direction.
4. the arm length is larger, the load capacity is stronger: through the lightweight design, using high-speed motor, high-precision reducer, the robot arm length is increased to 1599.6mm, rated load 16kg.
5. higher level of protection: after structural optimization, sealing design, after testing, arm front protection level reached IP67.



The map of ravel range

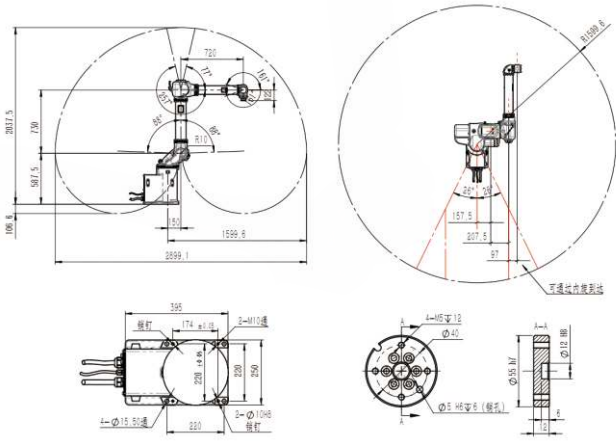


Table with 2 columns: Product model, HSR-BR616. Rows include: Degree of freedom (6), Payload (16kg), Maximum moving radius (1599.6mm), Repeat positioning accuracy (± 0.05mm), Range of motion (J1-J6 axes), Rated speed (J1-J6 axes), Maximum speed (J1-J6 axes), Allowable moment of inertia (J4-J6 axes), Allowable torque (J4-J6 axes), Applicable environment (temperature, humidity, other), Teach cable length (8M), Body-cabinet connection line length (3M), I/O parameters (Digital quantity:32 input,31 output), Battery capacity (4.3kVA), Rated power / voltage / current (3.2kW / 220V / 17.1A), Protection level (IP67), Installation method (Ground mounts), Body weight (128kg).



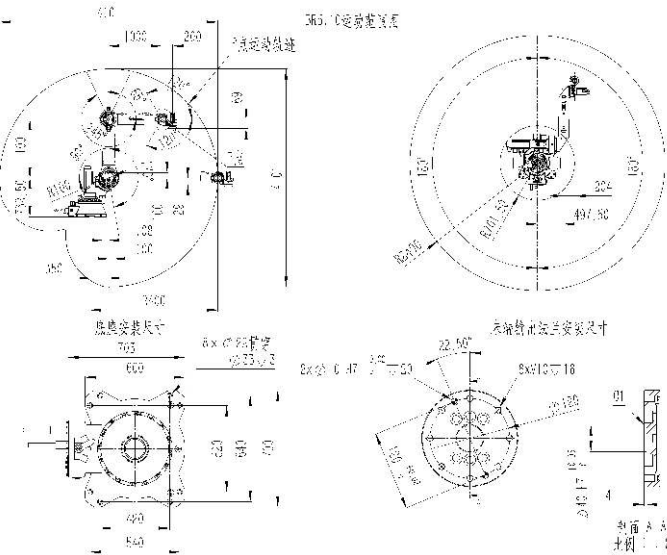
HSR-BR5110

Introduction

The palletizing robot“HSR-BR5110”is developed for the needs of customers with small application sites, high cycle requirements and high cost performance requirements,which especially is suitable for high-speed handling palletizing operations where wrist joint freedom is required.As the domestic industrial robot,the maximum speed of the joint of HSR-BR5110 has reached the speed of KUKA's existing similar products (KP 120 R3200PA), which is very cost-effective and has high market competitiveness.



The map of ravel range



Product model	HSR-BR5110
Degree of freedom	5
Payload	110kg
Maximum moving radius	2400mm
Repeat positioning accuracy	±0.2mm
Range of motion	J1轴 ±180°
	J2轴 -180° /+80°
	J3轴 +20° /+330°
	J4轴 ±120°
	J5轴 ±360°
Rated speed	J1轴 85° /s,1.48rad/s
	J2轴 78° /s,1.35rad/s
	J3轴 70° /s,1.22rad/s
	J4轴 187.5° /s,3.27rad/s
	J5轴 225° /s,3.93rad/s
Maximum speed	J1轴 128° /s,2.23rad/s
	J2轴 116° /s,2.03rad/s
	J3轴 105° /s,1.84rad/s
	J4轴 225° /s,3.93rad/s
	J5轴 300° /s,5.23rad/s
Allowable moment of inertia	J5轴 11.31kgm²
	J4轴 45.77kgm²
Allowable torque	J5轴 327.89Nm
	J4轴 707.92Nm
Applicable environment	温度 0° C ~ 45° C
	湿度 20% ~ 80%
	其他 Avoid contact with flammable, explosive or corrosive gases and liquids and away from electronic noise sources
Teacher cable length	8M
Body-cabinet connection line length	8M
I/O parameters	Digital quantity:32 input,32 output
Battery capacity	17kVA
Rated power / voltage / current	14kW / 380V / 20.77A
Protection level	IP50
Installation method	Ground
Body weight	980kg

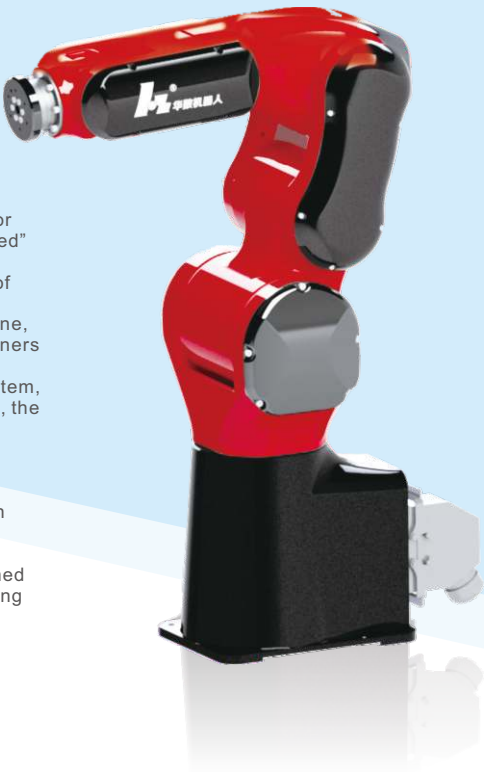
HSR-JR603

Six-axis joint robot series

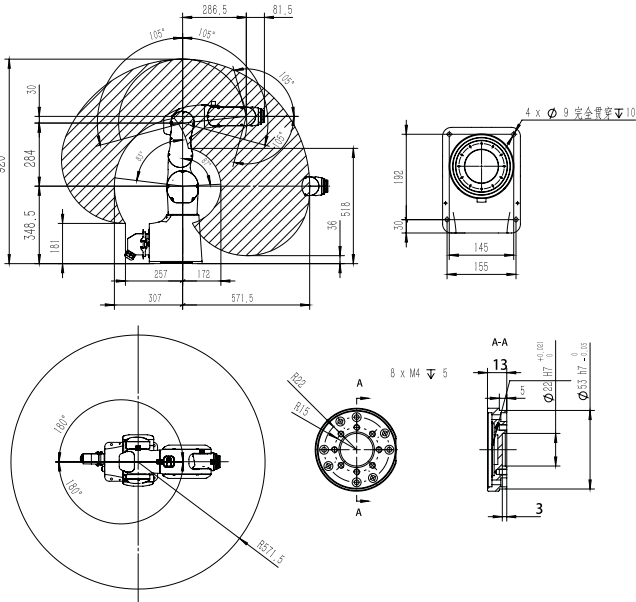
Introduction

HSR-JR603 robot is a new high-precision desktop 3C industrial robot, which is developed for the 3C market and meets the high requirements of “high precision, light weight and fast speed” of 3C production.

1. High precision: The performance of this product has reached the middle and upper level of the same level at home and abroad, and the repeat positioning accuracy reaches ±0.02mm.
2. High performance: It has the characteristics of fast dynamic response of the whole machine, and can realize smooth transition of small line segments, small round corners and small corners without jitter at high speed.
- 3, high speed: reasonable structure optimization, with high-performance control - servo system, can achieve high-speed operation, the maximum composite line speed reaches 2550mm / s, the standard door type takt time reaches 0.38s.
- 4, high cost performance: adhering to the concept of creating a national brand, the use of independent core components, compared with the same series of domestic and foreign products have a higher cost performance.
- 5, high flexibility: the whole machine lightweight design, small size, light weight (27Kg), high transport and installation density. Support desktop installation at any angle, upside down installation, side mount installation.
6. Strong load: Optimize the structure of the whole machine, cooperate with the self-contained high-performance servo system, have strong overload capability, and the rated speed running load capacity can be increased by 60%.



The map of ravel range



Product model	HSR-JR603
Degree of freedom	6
Payload	3kg
Maximum moving radius	571.5mm
Repeat positioning accuracy	±0.02mm
Range of motion	J1轴 ±180°
	J2轴 -160° /+10°
	J3轴 -25° /+235°
	J4轴 ±180°
	J5轴 ±105°
	J6轴 ±360°
Rated speed	J1轴 262.5° /s,4.58rad/s
	J2轴 262.5° /s,4.58rad/s
	J3轴 262.5° /s,4.58rad/s
	J4轴 262.5° /s,4.58rad/s
	J5轴 262.5° /s,4.58rad/s
	J6轴 420° /s,7.33rad/s
Maximum speed	J1轴 375° /s,6.54rad/s
	J2轴 375° /s,6.54rad/s
	J3轴 375° /s,6.54rad/s
	J4轴 375° /s,6.54rad/s
	J5轴 375° /s,6.54rad/s
	J6轴 600° /s,10.46rad/s
Allowable moment of inertia	J6轴 0.05kgm²
	J5轴 0.05kgm²
	J4轴 0.05kgm²
	J3轴 0.05kgm²
Allowable torque	J6轴 6.4Nm
	J5轴 6.4Nm
	J4轴 12.7Nm
Applicable environment	temperature 0° C ~ 45° C
	humidity 20% ~ 80%
Teacher cable length	8m
Body-cabinet connection line length	3m
I/O parameters	Digital quantity:32 input,31 output
Battery capacity	0.8kVA
Rated power / voltage / current	0.6kW / 220V / 3.2A
Protection level	IP54
Installation method	Ground/Upside down/Side mount/ Install in any direction
Body weight	27kg



# HSR-JR605

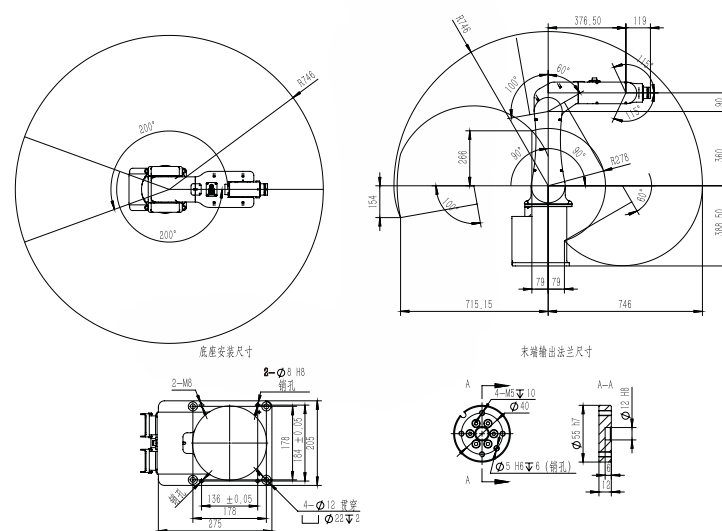
Six-axis joint robot series

## Introduction

HSR-JR605 is a small multi-purpose robot with a load of 5kg, which has the advantages of low investment and high output. Meet the rapid pickup and release, with great flexibility. The structure is compact, high precision and fast response while maintaining the versatility of the six-axis robot.



## The map of ravel range



Product model		HSR-JR605
Degree of freedom		6
Payload		5kg
Maximum moving radius		746mm
Repeat positioning accuracy		±0.02mm
Range of motion	J1轴	±200°
	J2轴	-180° /0°
	J3轴	+80° / +240°
	J4轴	±180°
	J5轴	±115°
	J6轴	±360°
Rated speed	J1轴	222° /s,3.87rad/s
	J2轴	180° /s,3.14rad/s
	J3轴	225° /s,3.93rad/s
	J4轴	235° /s,4.1rad/s
	J5轴	222° /s,3.87rad/s
	J6轴	360° /s,6.28rad/s
Maximum speed	J1轴	370° /s,6.45rad/s
	J2轴	300° /s,5.23rad/s
	J3轴	375° /s,6.54rad/s
	J4轴	391.6° /s,6.83rad/s
	J5轴	370° /s,6.45rad/s
	J6轴	600° /s,10.46rad/s
Allowable moment of inertia	J6轴	0.1kgm²
	J5轴	0.36 kgm²
	J4轴	0.5 kgm²
Allowable torque	J6轴	8Nm
	J5轴	16Nm
	J4轴	18Nm
Applicable environment	temperature	0° C~45° C
	humidity	20% ~ 80%
Teacher cable length		8M
Body~cabinet connection line length		3M
I/O parameters		Digital quantity:32 input,31 output
Battery capacity		1.5kVA
Rated power / voltage / current		1.2kW / 220V / 6.5A
Protection level		IP54
Installation method		Ground/Upside down/Side mount/ Install in any direction
Body weight		55kg

# HSR-JH605

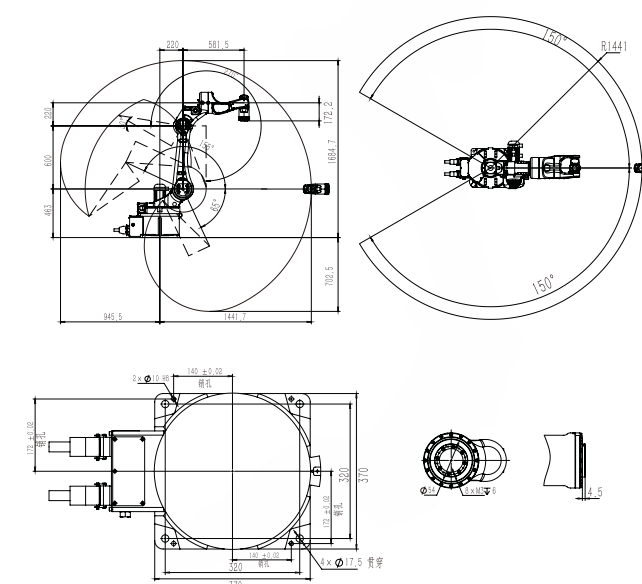
Six-axis joint robot series

## Introduction

The new generation of arc welding robot HSR-JH605 is specially designed for the field of arc welding. It adopts anti-backlash gears to achieve the hollow of the arm and the end flange. It can pass the wire and welding cable from the arm, reducing the wear and tear of the cable. a series of questions.



## The map of ravel range



Product model		HSR-JH605
Degree of freedom		6
Payload		5kg
Maximum moving radius		1441mm
Repeat positioning accuracy		±0.06mm
Range of motion	J1轴	±150°
	J2轴	-155° / ±65°
	J3轴	+30° / +270°
	J4轴	±180°
	J5轴	±130°
	J6轴	±360°
Rated speed	J1轴	148° /s,2.58rad/s
	J2轴	148° /s,2.58rad/s
	J3轴	148° /s,2.58rad/s
	J4轴	225° /s,3.93rad/s
	J5轴	225° /s,3.93rad/s
	J6轴	225° /s,3.93rad/s
Maximum speed	J1轴	197.33° /s,3.44rad/s
	J2轴	197.33° /s,3.44rad/s
	J3轴	197.33° /s,3.44rad/s
	J4轴	450° /s,7.86rad/s
	J5轴	450° /s,7.86rad/s
	J6轴	450° /s,7.86rad/s
Allowable moment of inertia	J6轴	0.035kgm <sup>2</sup>
	J5轴	0.3kgm <sup>2</sup>
	J4轴	0.3kgm <sup>2</sup>
Allowable torque	J6轴	15Nm
	J5轴	35Nm
	J4轴	35Nm
Applicable environment	temperature	0° C ~ 45° C
	humidity	20% ~ 80%
Teacher cable length		8M
Body-cabinet connection line length		6M
I/O parameters		Digital quantity:32 input,31 output
Battery capacity		2.5kVA
Rated power / voltage / current		2kW / 380V / 3.6A
Protection level		IP54
Installation method		Ground/Upside down/Side mount
Body weight		196kg

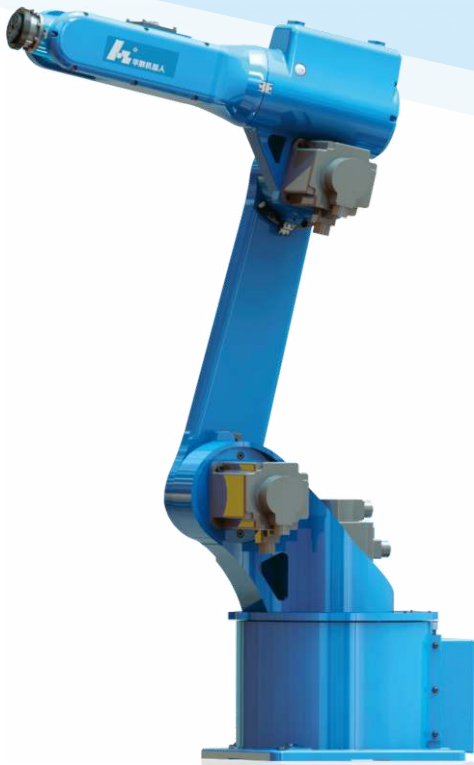


# HSR-JM612

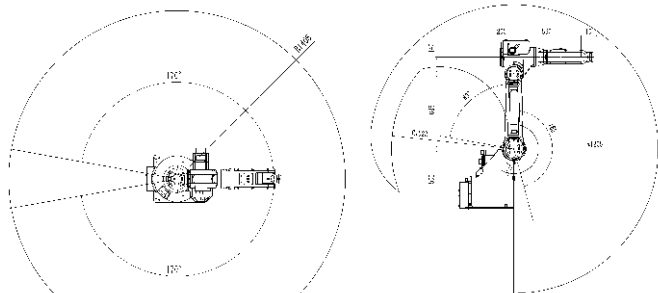
Six-axis joint robot series

## Introduction

HSR-JM612 is specially designed to solve the problem that the general robot in the 3C grinding industry is difficult to adapt to the repeated impact load during the grinding process, the working environment is dusty (dry), and the humidity is high (water hit). The model is optimized for the grinding process. Bringing the perfect 3C grinding solution, the new transmission structure at the end can withstand more continuous impact loads; at the same time, the end protection of IP65 can adapt to various high dust and high humidity conditions, and can perfectly adapt to various harsh environments.



The map of ravel range



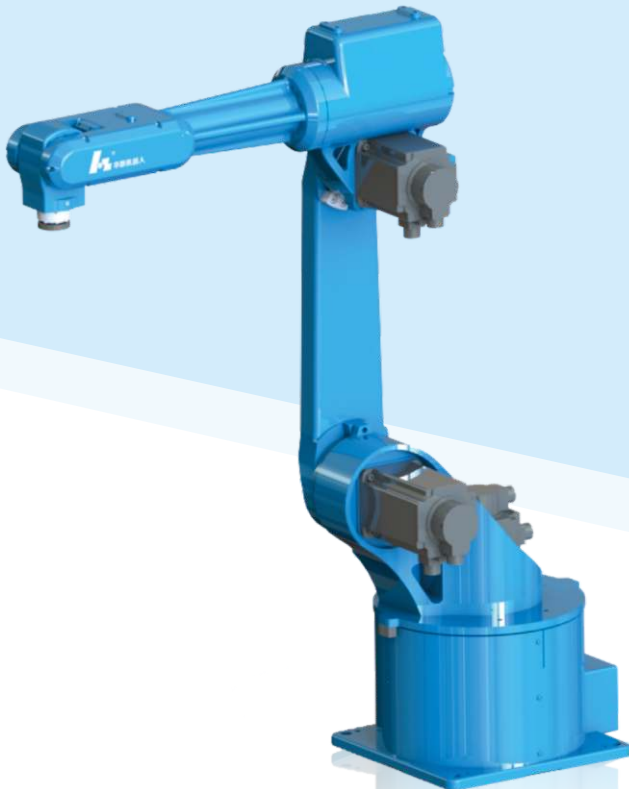
Product model		HSR-JM612
Degree of freedom		6
Payload		12kg
Maximum moving radius		1405mm
Repeat positioning accuracy		±0.06mm
Range of motion	J1轴	±170°
	J2轴	-170° / +75°
	J3轴	+40° / +265°
	J4轴	±180°
	J5轴	±125°
	J6轴	±360°
Rated speed	J1轴	148° /s,2.58rad/s
	J2轴	148° /s,2.58rad/s
	J3轴	148° /s,2.58rad/s
	J4轴	360° /s,6.28rad/s
	J5轴	225° /s,3.93rad/s
	J6轴	360° /s,6.28rad/s
Maximum speed	J1轴	197.33° /s,3.44rad/s
	J2轴	197.33° /s,3.44rad/s
	J3轴	197.33° /s,3.44rad/s
	J4轴	600° /s,10.47rad/s
	J5轴	375° /s,6.54rad/s
	J6轴	600° /s,10.47rad/s
Allowable moment of inertia	J6轴	0.17kgm <sup>2</sup>
	J5轴	1.2kgm <sup>2</sup>
	J4轴	1.2kgm <sup>2</sup>
	J3轴	1.2kgm <sup>2</sup>
Allowable torque	J6轴	15Nm
	J5轴	35Nm
	J4轴	35Nm
	J3轴	35Nm
Applicable environment	temperature	0° C ~ 40° C
	humidity	20% ~ 80%
Teacher cable length		8M
Body-cabinet connection line length		6M
I/O parameters		Digital quantity:32 input,31 output
Battery capacity		3.8kVA
Rated power / voltage / current		3kW / 380V / 5.4A
Protection level		IP54 / IP65(Wrist)
Installation method		Ground/Upside down/Side mount
Body weight		217kg

# HSR-JR612

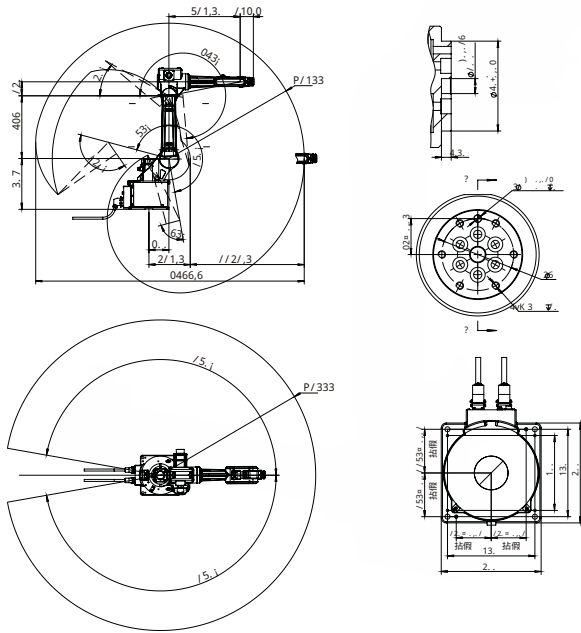
Six-axis joint robot series

## Introduction

HSR-JR612 industrial robot adopts high rigidity arm, advanced servo, fast moving speed, repeat positioning accuracy of up to ±0.06mm and moving radius of 1555mm. This product is widely used in grinding, loading and unloading, material handling, arc welding and other processing applications.



The map of ravel range



Product model		HSR-JR612
Degree of freedom		6
Payload		12kg
Maximum moving radius		1555mm
Repeat positioning accuracy		±0.06mm
Range of motion	J1轴	±170°
	J2轴	-170° / +75°
	J3轴	+40° / +265°
	J4轴	±180°
	J5轴	±108°
	J6轴	±360°
Rated speed	J1轴	148° /s,2.58rad/s
	J2轴	148° /s,2.58rad/s
	J3轴	148° /s,2.58rad/s
	J4轴	360° /s,6.28rad/s
	J5轴	225° /s,3.93rad/s
	J6轴	360° /s,6.28rad/s
Maximum speed	J1轴	197.33° /s,3.44rad/s
	J2轴	197.33° /s,3.44rad/s
	J3轴	197.33° /s,3.44rad/s
	J4轴	600° /s,10.47rad/s
	J5轴	375° /s,6.54rad/s
	J6轴	600° /s,10.47rad/s
Allowable moment of inertia	J6轴	0.17kgm <sup>2</sup>
	J5轴	1.2kgm <sup>2</sup>
	J4轴	1.2kgm <sup>2</sup>
	J3轴	1.2kgm <sup>2</sup>
Allowable torque	J6轴	15Nm
	J5轴	35Nm
	J4轴	35Nm
	J3轴	35Nm
Applicable environment	temperature	0° C ~ 45° C
	humidity	20% ~ 80%
Teacher cable length		8M
Body-cabinet connection line length		6M
I/O parameters		Digital quantity:32 input,31 output
Battery capacity		3.8kVA
Rated power / voltage / current		3kW / 380V / 5.4A
Protection level		IP54 / IP65 ( Wrist )
Installation method		Ground/Upside down/Side mount
Body weight		196kg



# HSR-JR620L

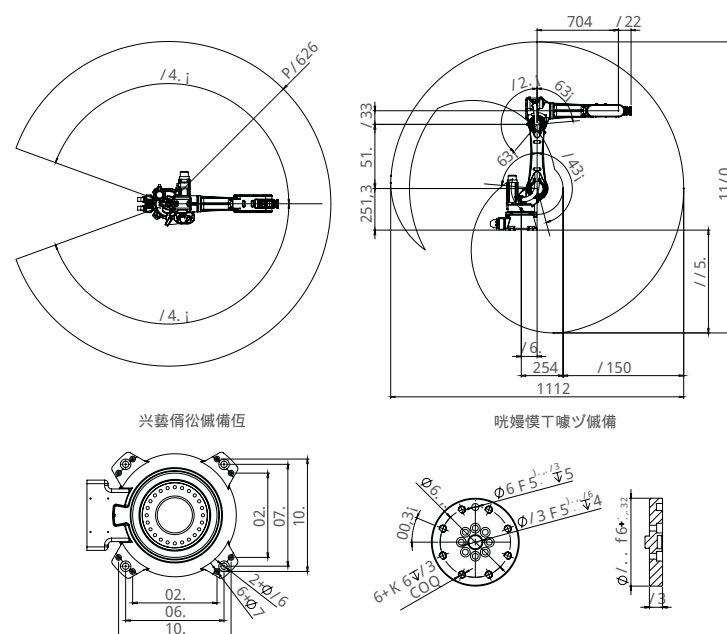
## Six-axis joint robot series

## Introduction

HSR-JR620L has the advantages of high precision, strong acceleration capability and large range of motion. The repeatability is up to  $\pm 0.06\text{mm}$  and the moving radius is up to 1848mm, which can easily cope with the application market in processing, assembly and welding industries.



## The map of ravel range



Product model		HSR-JR620L
Degree of freedom		6
Payload		20kg
Maximum moving radius		1848mm
Repeat positioning accuracy		± 0.06mm
Range of motion	J1轴	± 160°
	J2轴	-175° /+75°
	J3轴	+40° /+265°
	J4轴	± 180°
	J5轴	± 125°
	J6轴	± 360°
Rated speed	J1轴	99° /s, 1.73rad/s
	J2轴	87° /s, 1.52rad/s
	J3轴	144° /s, 2.51rad/s
	J4轴	180° /s, 3.14rad/s
	J5轴	180° /s, 3.14rad/s
	J6轴	225° /s, 3.92rad/s
Maximum speed	J1轴	148° /s, 2.59rad/s
	J2轴	109° /s, 1.9rad/s
	J3轴	172° /s, 3.01rad/s
	J4轴	300° /s, 5.23rad/s
	J5轴	300° /s, 5.23rad/s
	J6轴	375° /s, 6.54rad/s
Allowable moment of inertia	J6轴	0.8kgm <sup>2</sup>
	J5轴	3.3kgm <sup>2</sup>
	J4轴	8.7kgm <sup>2</sup>
Allowable torque	J6轴	30.7Nm
	J5轴	73.4Nm
	J4轴	140.4Nm
Applicable environment	temperature	0° C~45° C
	humidity	20%~80%
Teacher cable length		8M
Body-cabinet connection line length		6M
I/O parameters		Digital quantity:32 input,31 output
Battery capacity		5.6kVA
Rated power / voltage / current		4.5kW / 380V / 8.1A
Protection level		IP54
Installation method		Ground/Upside down
Body weight		305kg

# HSR-JR630

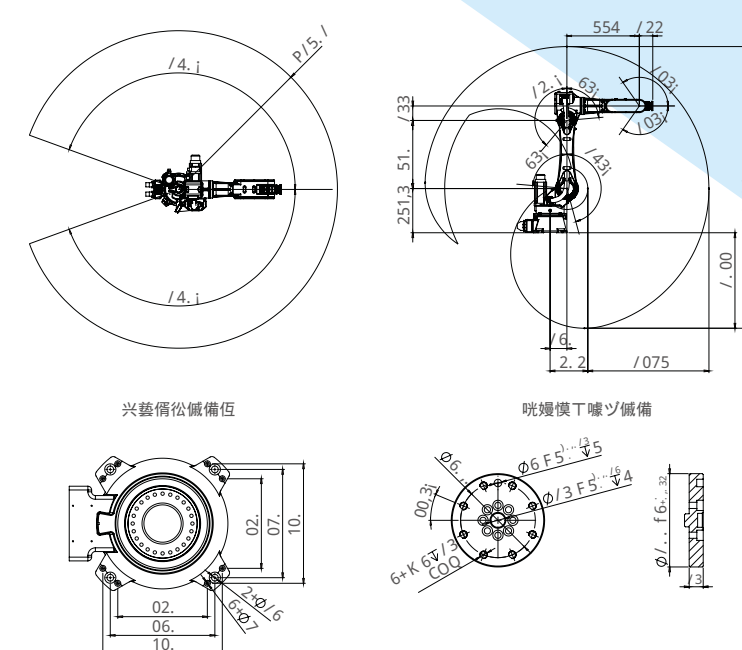
## Six-axis joint robot series

## Introduction

The new generation of robots HSR-JR630 has a sharp edge and the advantages are all obvious. The model is optimized by the mechanism of the body, and the application of the advanced interpolation algorithm of the control system has the advantages of high precision, strong acceleration capability and good rigidity.



## The map of ravel range



Product model		HSR-JR630
Degree of freedom		6
Payload		30kg
Maximum moving radius		1701mm
Repeat positioning accuracy		±0.05mm
Range of motion	J1轴	±160°
	J2轴	-175° /+75°
	J3轴	+40° /+265°
	J4轴	±180°
	J5轴	±125°
	J6轴	±360°
Rated speed	J1轴	99° /s,1.73rad/s
	J2轴	87° /s,1.52rad/s
	J3轴	144° /s,2.51rad/s
	J4轴	180° /s,3.14rad/s
	J5轴	180° /s,3.14rad/s
	J6轴	225° /s,3.92rad/s
Maximum speed	J1轴	148° /s,2.59rad/s
	J2轴	109° /s,1.9rad/s
	J3轴	172° /s,3.01rad/s
	J4轴	300° /s,5.23rad/s
	J5轴	300° /s,5.23rad/s
	J6轴	375° /s,6.54rad/s
Allowable moment of inertia	J6轴	0.8kgm <sup>2</sup>
	J5轴	3.3kgm <sup>2</sup>
	J4轴	8.7kgm <sup>2</sup>
Allowable torque	J6轴	30.7Nm
	J5轴	73.4Nm
	J4轴	140.4Nm
Applicable environment	temperature	0° C -45° C
	humidity	20% - 80%
Teacher cable length		8M
Body-cabinet connection line length		6M
I/O parameters		Digital quantity:32 input,31 output
Battery capacity		5.6kVA
Rated power / voltage / current		4.5kW / 380V / 8.1A
Protection level		IP54
Installation method		Ground/Upside down
Body weight		305kg

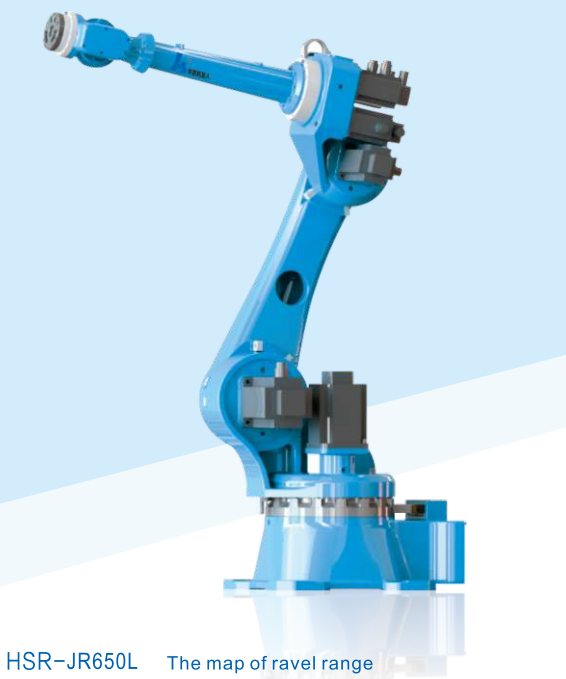


# HSR-JR650L / JR680

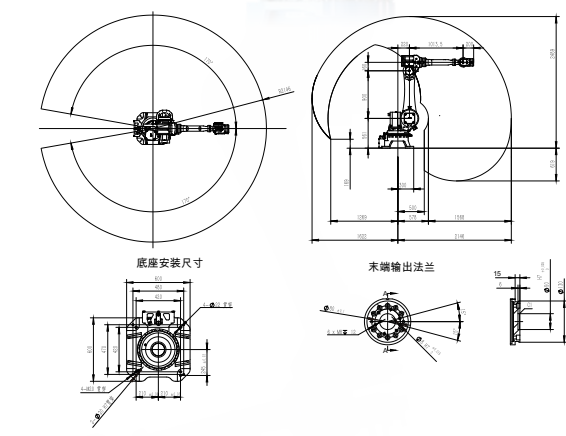
Six-axis joint robot series

## Introduction

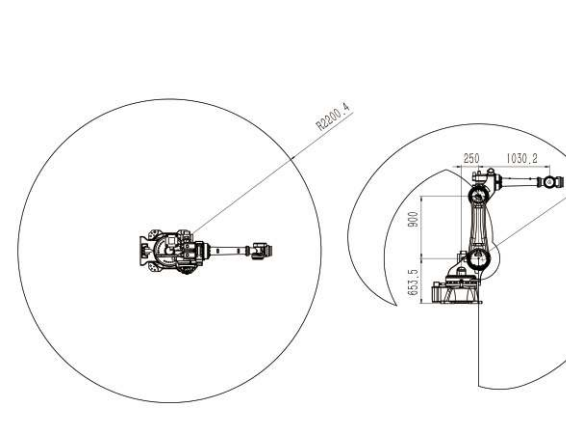
The HSR-JR650L/JR680 parameters are benchmarked to the same type of robots at home and abroad, and have reached advanced levels in parameter performance. At the same time, the design requirements are fully considered for the handling requirements of handling, welding and machining, which are suitable for more severe working conditions and can be used for many Strong support for applications.



HSR-JR650L The map of ravel range



HSR-JR680 The map of ravel range

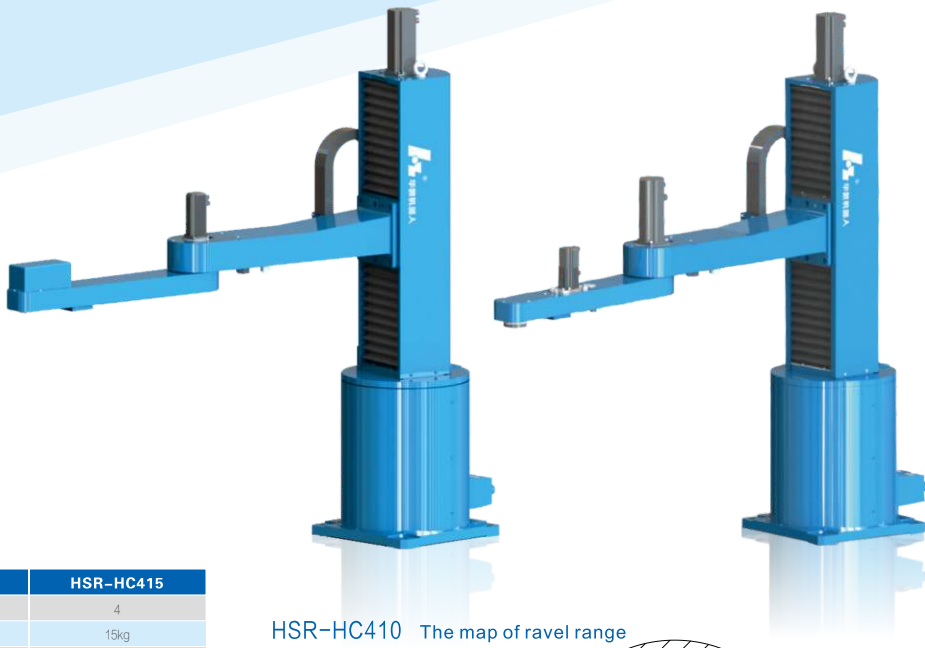


# HSR-HC410 / HC415

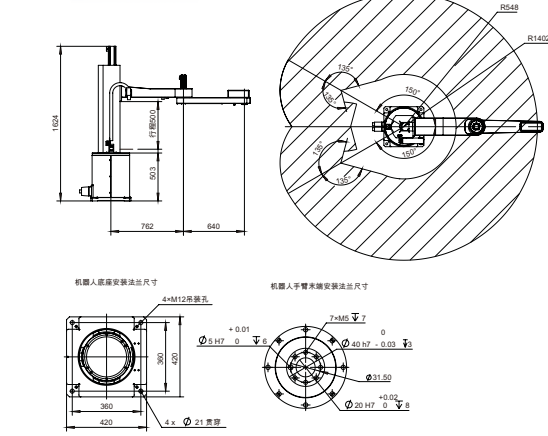
Four-axis joint robot series

## Introduction

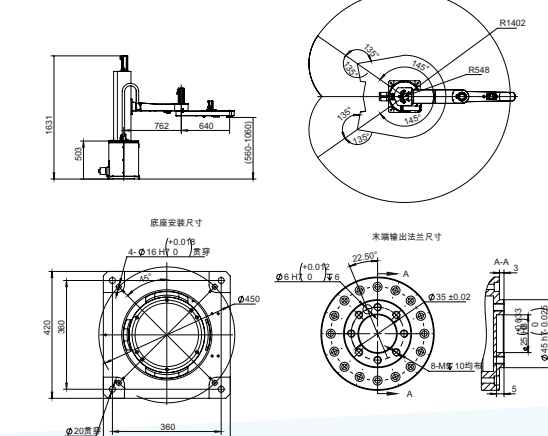
HSR-HC410/HC415 is a new generation of high-rigidity four-axis robots. It is the best choice for the stamping and handling industry to achieve low cost and high performance in its class. Its load is up to 15kg, the range of motion is 1402mm, and the new generation of teaching device is equipped with its simple and modular operation mode, which makes the operation simple and convenient.



HSR-HC410 The map of ravel range



HSR-HC415 The map of ravel range



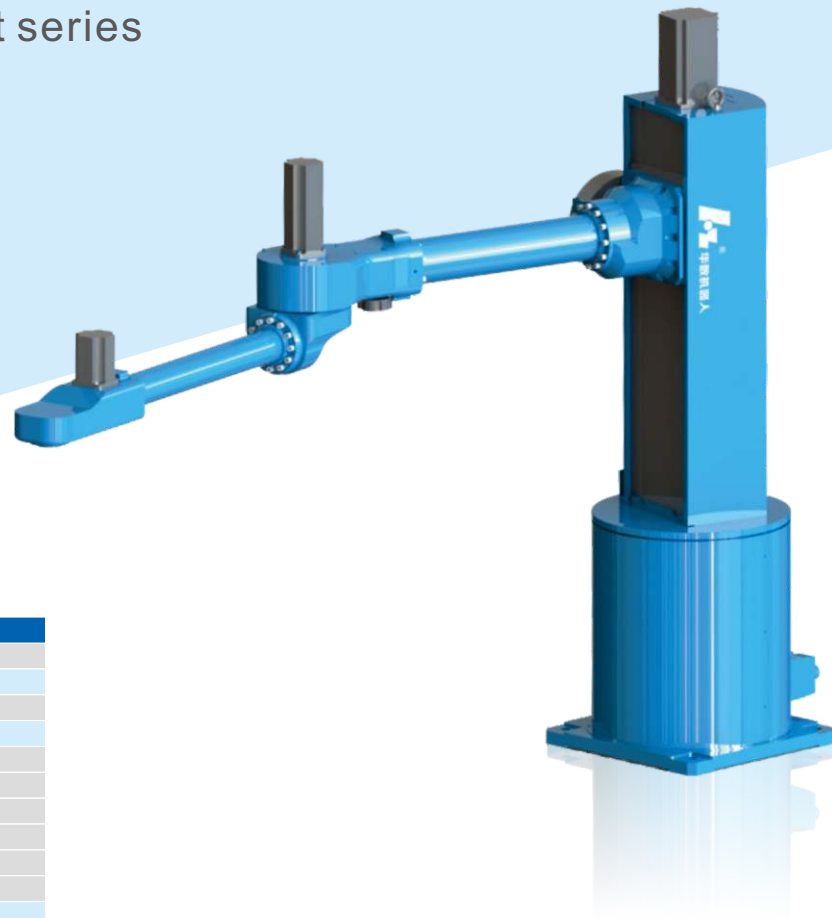


# HSR-HC420

Four-axis joint robot series

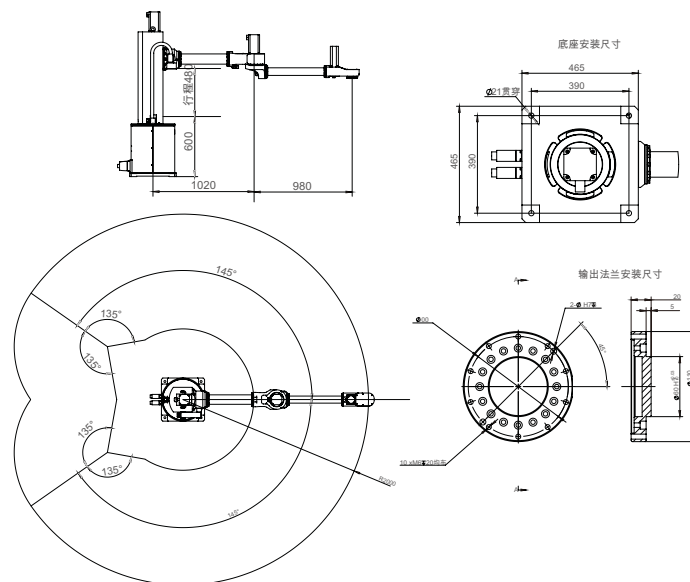
## Introduction

HSR-HC420 has the inherent advantages, its 20kg load and arm length of 2000mm. It can replace 50kg six-axis robot in the stamping and handling industry and has high speed advantage. It achieves low input and high output in the automatic production process.



### The map of ravel range

Product model		HSR-HC420
Degree of freedom		4
Payload		20kg
Maximum moving radius		2000mm
Repeat positioning accuracy		± 0.08mm
Range of motion	J1轴	± 145°
	J2轴	± 135°
	J3轴	± 240mm
	J4轴	± 180°
	J5轴	-
	J6轴	-
Rated speed	J1轴	108° /s,1.88rad/s
	J2轴	148.76° /s,2.60rad/s
	J3轴	500mm/s
	J4轴	225° /s,3.93rad/s
	J5轴	-
	J6轴	-
Maximum speed	J1轴	216° /s,3.77rad/s
	J2轴	198° /s,3.54rad/s
	J3轴	667mm/s
	J4轴	375° /s,6.54rad/s
	J5轴	-
	J6轴	-
Allowable moment of inertia	J6轴	-
	J5轴	-
	J4轴	6.5kgm <sup>2</sup>
Allowable torque	J6轴	-
	J5轴	-
	J4轴	90Nm
Applicable environment	temperature	0° C-45° C
	humidity	20%~80%
Teacher cable length		8M
Body+ cabinet connection line length		6M
I/O parameters		Digital quantity:32 input,31 output
Battery capacity		5.6kVA
Rated power / voltage / current		4.5kW / 380V / 8.1A
Protection level		IP54
Installation method		ground/upside down
Body weight		280kg



# HSR-SR3400/SR6600

Four-axis joint robot series

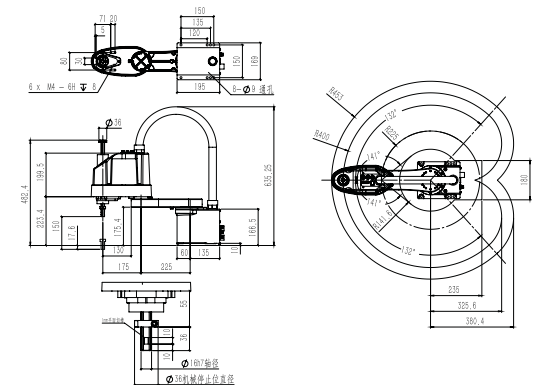
## Introduction

HSR-3400 and SR6600 have high speed, high precision, high performance, a variety of load positions, and more flexible movement. The load capacity covers 1kg-6kg and can be widely used in the electronics industry, pharmaceutical industry and food industry.

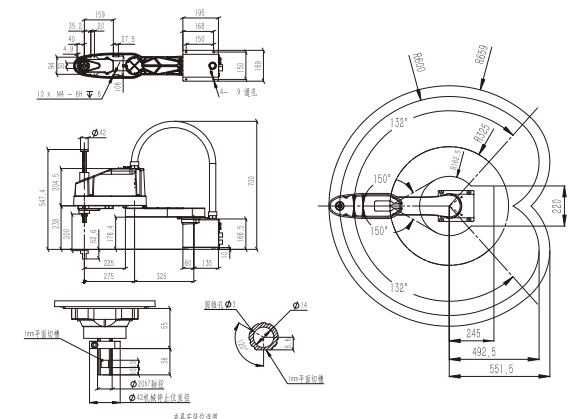


Product model		HSR-SR3400	HSR-SR6600
Degree of freedom		4	4
Payload		3kg / 1kg	6kg / 2kg
Maximum moving radius		400mm	600mm
Repeat positioning accuracy		±0.01mm	±0.02mm
Range of motion	J1轴	±132°	±132°
	J2轴	±135°	±150°
	J3轴	0-150mm	0-200mm
	J4轴	±360°	±360°
	J5轴	-	-
	J6轴	-	-
Rated speed	J1轴	360° /s,6.28rad/s	225° /s,3.92rad/s
	J2轴	470° /s,8.19rad/s	360° /s,6.28rad/s
	J3轴	710mm/s	666mm/s
	J4轴	1500° /s,26.16rad/s	1200° /s,20.93rad/s
	J5轴	-	-
	J6轴	-	-
Maximum speed	J1轴	530° /s,9.24rad/s	375° /s,6.54rad/s
	J2轴	700° /s,12.21rad/s	600° /s,10.46rad/s
	J3轴	1065mm/s	1111mm/s
	J4轴	2600° /s,43.35rad/s	2000° /s,34.88rad/s
	J5轴	-	-
	J6轴	-	-
Allowable moment of inertia	J6轴	-	-
	J5轴	-	-
	J4轴	0.05kgm <sup>2</sup> / 0.005kgm <sup>2</sup>	0.12kgm <sup>2</sup> / 0.01kgm <sup>2</sup>
Allowable torque	J6轴	-	-
	J5轴	-	-
	J4轴	3.29Nm	4.23Nm
Applicable environment	temperature	0° C ~ 45° C	0° C ~ 45° C
	humidity	20% ~ 80%	20% ~ 80%
Teacher cable length		Optional (8 meters in length of the instructor cable if optional is required)	
Body-cabinet connection line length		3M	3M
I/O parameters		Digital quantity:32 input,31 output	
Battery capacity		0.6kVA	0.8kVA
Rated power / voltage / current		0.5kW / 220V / 2.7A	0.6kW / 220V / 3.2A
Protection level		IP54	IP54
Installation method		Ground/Desktop installation	
Body weight		15kg	21kg

HSR-SR3400 行程范围图



HSR-SR6600 行程范围图





HSR-SR5700

Four-axis parallel joint robot series

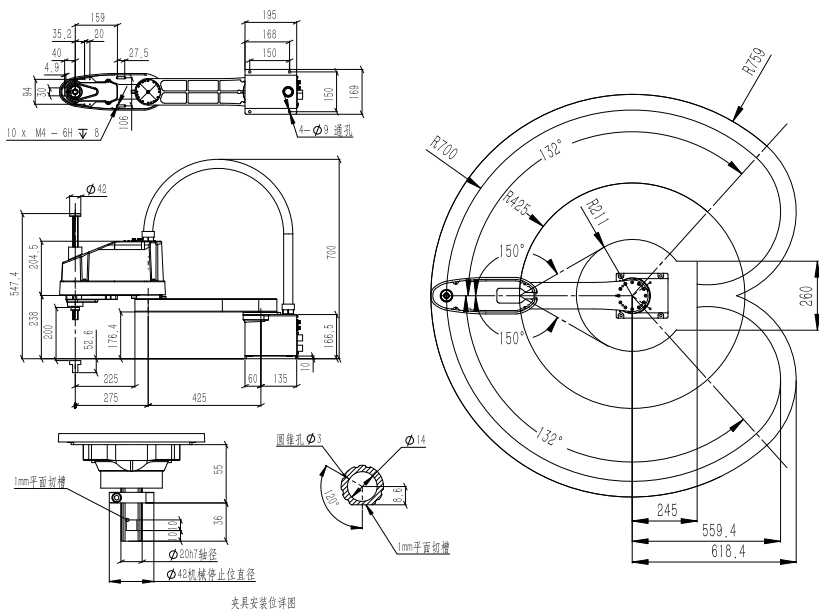
Introduction

The HSR-SR5700 has a wide coverage, high precision, high performance, and a variety of load positions. The load capacity covers 1kg-5kg. It can meet the needs of customization and is widely used in the electronics industry, pharmaceutical industry and food industry.



Product model		HSR-SR5700
Degree of freedom		4
Payload		5kg / 2kg
Maximum moving radius		700mm
Repeat positioning accuracy		±0.02mm
Range of motion	J1轴	±132°
	J2轴	±150°
	J3轴	0~200mm
	J4轴	±360°
	J5轴	-
	J6轴	-
Rated speed	J1轴	225° /s,3.92rad/s
	J2轴	420° /s,7.32rad/s
	J3轴	666mm/s
	J4轴	1400° /s,24.42rad/s
	J5轴	-
	J6轴	-
Maximum speed	J1轴	335° /s,5.84rad/s
	J2轴	600° /s,10.46rad/s
	J3轴	1111mm/s
	J4轴	2000° /s,34.88rad/s
	J5轴	-
	J6轴	-
Allowable moment of inertia	J6轴	-
	J5轴	-
	J4轴	0.12kgm² / 0.01kgm²
	J3轴	-
Allowable torque	J6轴	-
	J5轴	-
	J4轴	-
	J3轴	4.23Nm
Applicable environment	temperature	0° C ~ 45° C
	humidity	20% ~ 80%
Teacher cable length	Optional (8 meters in length of the instructor cable if optional is required)	
Body-cabinet connection line length	3米	
I/O parameters	Digital quantity:32 input,31 output	
Battery capacity	0.8kVA	
Rated power / voltage / current	0.6kW / 220V / 3.2A	
Protection level	IP54	
Installation method	Ground/Desktop installation	
Body weight	22kg	

The map of ravel range



HSR-DT401E / DT801B

Four-axis parallel joint robot series

Introduction

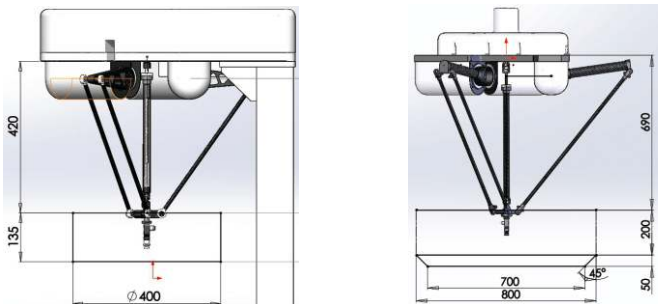
HSR-DT series is suitable for fast sorting or packing of various industries, especially small food, medicine, hardware and other industries. It integrates intelligent visual recognition function, which can identify and accurately locate the shape, features and posture of the target. Dynamic tracking capabilities. Repeat positioning accuracy is up to 0.1mm. A load of 1kg is sufficient for most products that require fast sorting.



HSR-DT401E

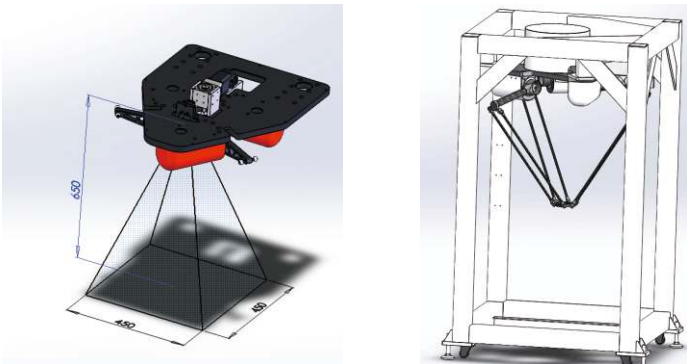
HSR-DT801B

The map of ravel range



HSR-DT401E  
Built-in visual range

HSR-DT801B Agency diagram



Product model		HSR-DT401E	HSR-DT801B
Degree of freedom		4	4
Payload		1kg	1kg
Maximum moving radius		200mm	400mm
Repeat positioning accuracy		±0.1mm	±0.1mm
Range of motion	J1轴	5° /+125°	5° /+125°
	J2轴	5° /+125°	5° /+125°
	J3轴	5° /+125°	5° /+125°
	J4轴	± 360°	± 360°
Rated speed	J1轴	514.2° /s,8.97rad/s	545.4° /s,9.51rad/s
	J2轴	514.2° /s,8.97rad/s	545.4° /s,9.51rad/s
	J3轴	514.2° /s,8.97rad/s	545.4° /s,9.51rad/s
	J4轴	3600° /s,62.82rad/s	3600° /s,62.82rad/s
Maximum speed	J1轴	1028.5° /s,17.95rad/s	909° /s,15.86rad/s
	J2轴	1028.5° /s,17.95rad/s	909° /s,15.86rad/s
	J3轴	1028.5° /s,17.95rad/s	909° /s,15.86rad/s
	J4轴	7200° /s,125.6rad/s	6000° /s,104.7rad/s
Applicable environment	temperature	0° C ~ 45° C	0° C ~ 45° C
	humidity	20% ~ 85%	20% ~ 85%
Teacher cable length		No teaching device	
Body-cabinet connection line length		5M	5M
I/O parameters		Digital quantity:24 input,24output	
Rated power / voltage / current		1.8kW / 3PhaseAC380V / 3.3A	3kW / 3PhaseAC380V / 5.4A
Protection level		IP53	IP53
Installation method		Desktop installation	Inverted installation
Body weight		85kg	110kg
Control cabinet protection level		IP54	IP54
Control cabinet size		500 (Wide) × 330 (Thick) × 640 (High)	560 (Wide) × 270 (Thick) × 730 (High)
Weight of the control cabinet		30kg	45kg



# 备忘录

[illegible]

# 备忘录

This image shows a single sheet of white paper with horizontal ruling lines. The lines are evenly spaced and run across the width of the page. There are no margins, text, or other markings on the paper.