



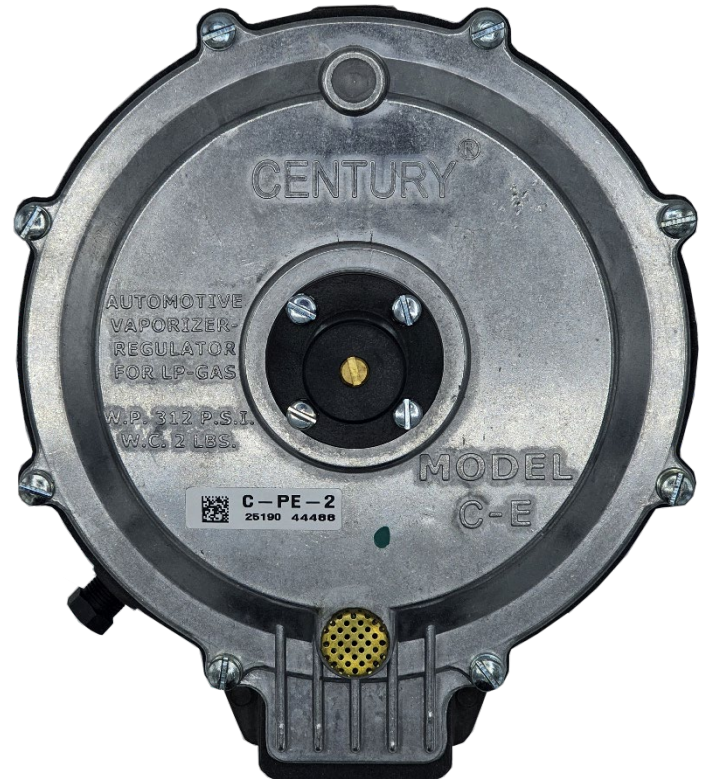
Model C-E & C-PE

Regulators

DESCRIPTION

The model C-E & C-PE are engine heated two-stage regulator/vaporizers. The model C-E provides a choice of two negative outlet pressures. A "B" blue secondary spring provides a -1.5" w.c. (-0.37 kPa) output and an optional "O" orange secondary spring provides -0.5" w.c. (-0.12 kPa) output. A manual primer is standard on the Model E.

The model C-PE provides a positive outlet pressure for applications that require a positive feed system and/or the ability to vaporize liquid fuel. A heated regulator/vaporizer is not required of CNG (it is recommended that the Model C-PEV be used for these systems). Additional mixture stability is possible with the C-PE as a result of a more consistent fuel temperature gained through the use of the heated labyrinth. The C-PE is supplied as a fixed outlet pressure regulator but can be converted to an adjustable unit with the C-AC1-74 retrofit kit.



MODEL C-PE-2 SHOWN

SPECIFICATIONS

Fuel Type.....	LPG Liquid/Vapor and Natural Gas
Inlet Pressure	
Maximum	312 psi (21.51 Bar)
Minimum	30 psi (207 kPa)
Outlet Pressure (Nominal)	
C-EB-2.....	-1.5" w.c. (-0.37 kPa)
C-EO-2	-0.5" w.c. (-0.12 kPa)
C-PE.....	+5.0" w.c. (1.2 kPa)
C-PE-2.....	ADJUSTABLE WITH C-AC1-74)
HP/kW Rating	325 hp (242.3 kW) LPG
Operating Temperature Range.....	-40°F to +250°F (-40°C to +121°C)
Fuel Filtration Required	40 micron
Heating Chamber Source	Required for liquid LPG
Mounting Position	Vertical (outlet down) recommended. Horizontal position can be used when fuel contamination can be controlled with HD-5 specified LPG fuel
Diaphragm Material	Silicone
Applications	Stationary, mobile, industrial, and automotive



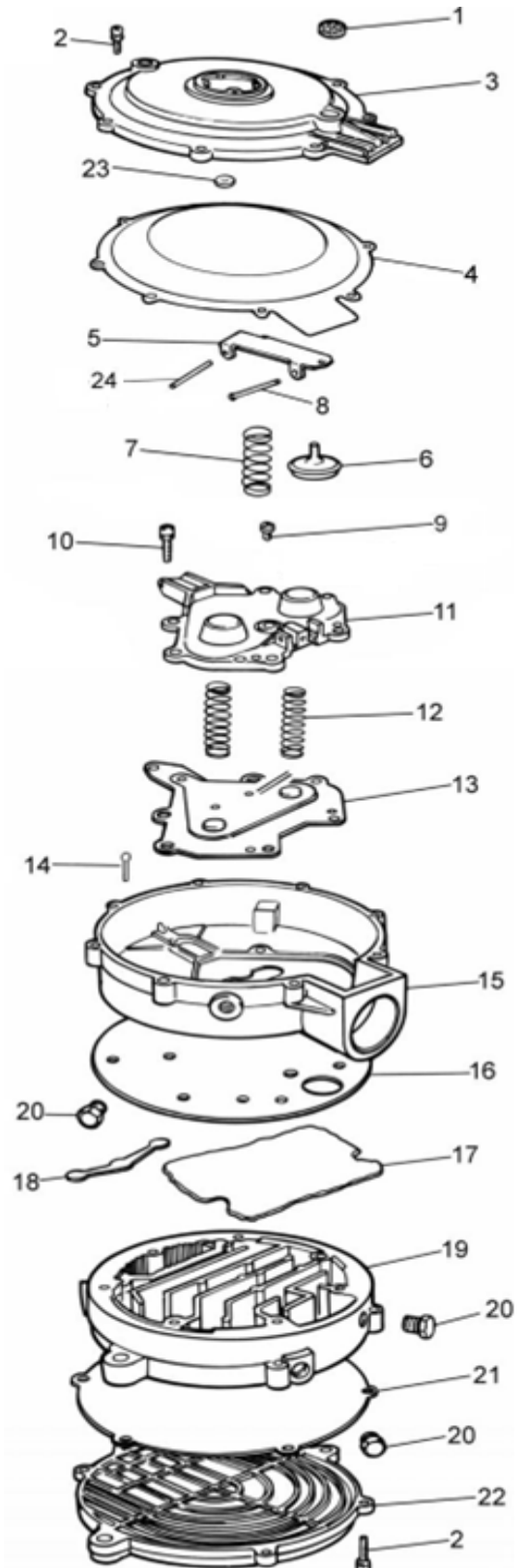
COMPONENTS

ITEM #	PART #	DESCRIPTION
1	C-S7-1	Screen, Atmospheric Vent
2	C-S1-3*	Screw, 10-24 x 5/8" SEMS (8)
3	NSS	Cover, Secondary
4	C-AD1-23*(1) C-AD1-23-2*(2)	Diaphragm, Secondary, Silicone Model E Diaphragm, Secondary, Silicone PE
5	C-AL1-86*	Lever, Secondary w/ or w/o Hole
6	C-S4-37*	Seat, Secondary
7†	C-S2-22 C-S2-23	Spring, Secondary Regulator (Orange), Spring, Secondary Regulator (Blue),
8	NSS	Pin, Secondary Lever Fulcrum
9	C-S1-40*	Screw, 10-24 x 3/8" SEMS
10	C-S1-39-1*	Screw, 12-24 x 1 1/8" SEMS Model E Only
11	NSS	Cover, Primary Diaphragm
12	NSS	Spring, Primary Regulator EB (2)
13	C-AD1-15*	Diaphragm Assy, Primary
14	C-P1-11*	Pin, Primary Valve
15	NSS	Body, Regulator E Series
16	C-G1-37*	Gasket, Regulator Body
17	C-F3-1*	Sponge
18	C-S4-7*	Seat, Primary
19	NSS	Body, Assy, Heat Exchanger
20	NSS	Plug, Hex Head, 1/8 NPT (3)
21	C-G1-30079-1*	Gasket, Heat Exchanger Cover
22	NSS	Cover, Heat Exchanger
23	NSS	Washer, hand primer
24	NSS*	Pin, Lever Diaphragm Link

NSS = Not Serviced Separately

* Repair kit components. (1) = C-RK-E-2; (2) C-RK-PE-2

† Two vapor outlet pressures are available. The orange secondary spring gives -0.5" w.c. (-0.12 kPa) pressure. The blue secondary spring gives a -1.5" w.c. (-0.37 kPa) pressure.





COMPONENTS (CONTINUED)

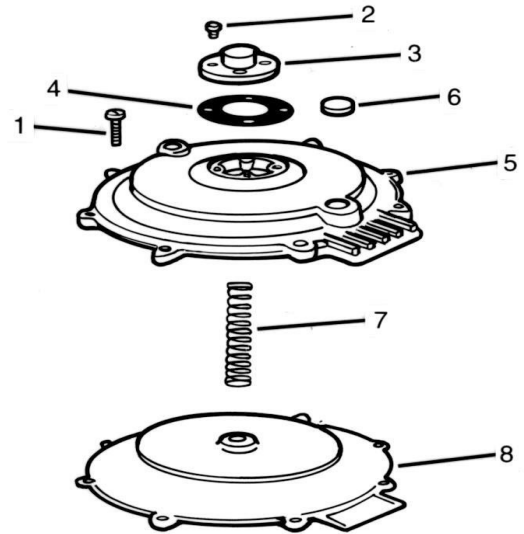
**C1-22-2 COVER
 PE/PEV SERIES**

ITEM #	PART#	DESCRIPTION
1*	C-S1-3	Screw, 10-24 x 5/8" SEMS (8)
2*	C-S1-101	Screw, 6-32 x 1/4" SEMS (4)
3	C-H3-3	Housing, spring
4*	C-G1-84	Gasket, spring housing
5	NSS	Cover ass'y
6	C-S7-1	Screen, atmospheric vent
7	C-S2-37 C-S2-42	Spring, secondary Spring, secondary, PEV-1-8 only
8*	C-AD1-23-2	Diaphragm assembly secondary, Silicone

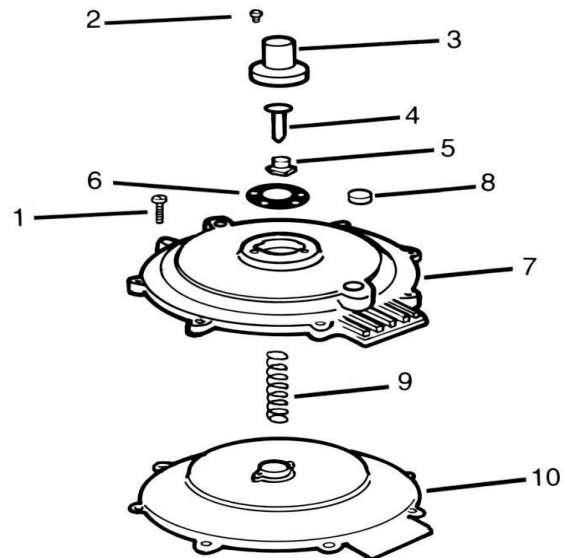
**C1-22-2 COVER WITH AC1-74
 PE/PEV-1 SERIES**

ITEM #	PART#	DESCRIPTION
1*	C-S1-3	Screw, 10-24 x 5/8" SEMS (8)
2*	C-S1-101	Screw, 6-32 x 1/4" SEMS (4)
3	NSS	Cover, adjustable PEV
4	NSS	Screw, PEV adjustment
5	NSS	Nut, PEV spring perch
6*	C-G1-84	Gasket, spring housing
7	NSS	Cover assembly
8	C-S7-1	Screen, atmospheric vent
9	C-S2-37 5.2" to 7.0" w.c. C-S2-42 14" to 17.0" w.c.	
10*	C-AD1-23-2	Diaphragm assembly secondary, Silicone

NSS = Not Serviced Separately



C1-22-2 Cover Shown with the C-H3-3 fixed spring housing.



C1-22-2 Cover Shown with the optional C-AC1-74 Adjustable Spring Housing.