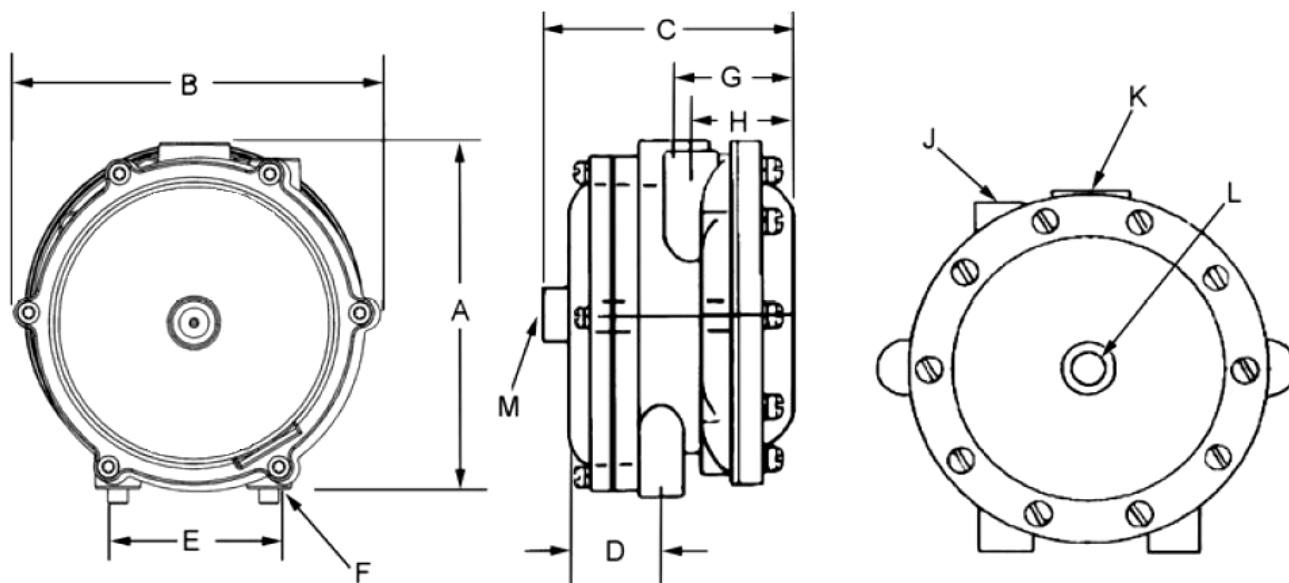




# CENTURY FUEL PRODUCTS

## MODEL C-VFF30 VACUUM FUEL LOCK/FILTER



P/N	DIAPHRAGM TYPE	A OVERALL HEIGHT	B OVERALL WIDTH	C OVERALL DEPTH	D FRONT OF FUEL LOCK TO CENTER OF MOUNTING HOLE	E MOUNTING HOLES CENTER TO CENTER	F MOUNTING HOLE THREAD	G BACK OF FUEL LOCK TO CENTER OF FUEL OUTLET	H BACK OF FUEL LOCK TO CENTER OF VACUUM PORT	J AIR VALVE VACUUM PORT (NPT)	K FUEL OUTLET (NPT)	L FUEL INLET (NPT)	M PRIMER
C-VFF30-2	Silicone	109mm (4.28")	115mm (4.50")	66.7mm (2.625")	24mm (.94")	48mm (1.88")	1/4"-20	37mm (1.44")	32mm (1.25")	1/8"	1/4"	1/4"	No
C-VFF30-2-4	Silicone	109mm	115mm (4.50")	66.7mm (2.625")	24mm (.94")	48mm (1.88")	1/4"-20	37mm (1.44")	32mm (1.25")	1/8" w/ Check Valve	1/4"	1/4"	Manual
C-VFF30-3	Fluoro-Silicone	109mm	115mm (4.50")	66.7mm (2.625")	24mm (.94")	48mm (1.88")	1/4"-20	37mm (1.44")	32mm (1.25")	1/8"	1/4"	1/4"	No
C-VFF30-433 (CLARK PN: 3675433)	Silicone	109mm	115mm (4.50")	66.7mm (2.625")	24mm (.94")	48mm (1.88")	1/4"-20	37mm (1.44")	32mm (1.25")	1/8"	1/4"	1/4"	No
C-VFF30-321 (HYSTER PN: 1367589)	Fluoro-Silicone	109mm	115mm (4.50")	66.7mm (2.625")	24mm (.94")	48mm (1.88")	1/4"-20	37mm (1.44")	32mm (1.25")	1/8"	1/4"	1/4"	No

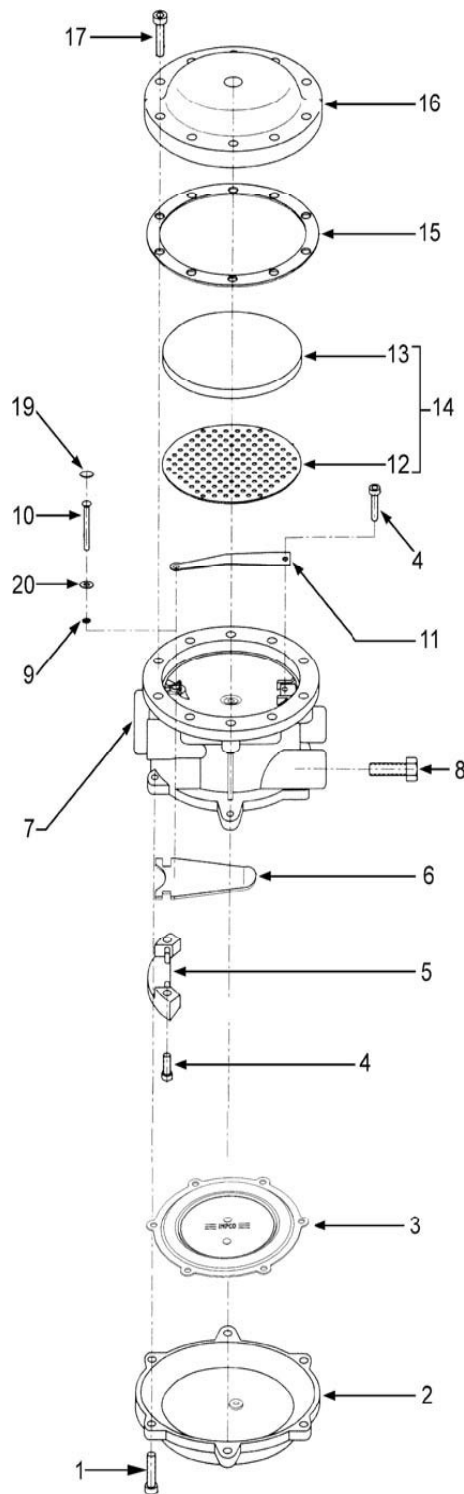


# CENTURY FUEL PRODUCTS

## MODEL C- VFF30 VACUUM FUEL LOCK/FILTER

### C-VFF30-2 COMPONENTS LIST

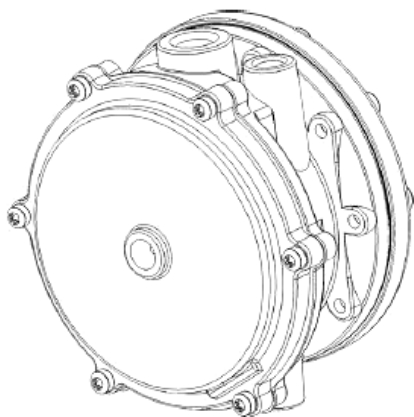
ITEM #	PART #	Description
1	C-S1-15265-001	Screw, 8-32 X 17/32" (6)
2	C-C1-37	Diaphragm Cover
3	C-AD1-27-3	Diaphragm Assembly, Silicone
4	C-S1-59	Screw, 8-32 x 5/8" (2)
5	C-F3-2	Fulcrum
6	C-L1-39	Valve Operating Lever
7	C-AB1-34	Body Assembly
8	C-S1-5	Screw, 1/4-20 x 5/8" SEMS (2)
9	C-S3-42	Seal, Lip Pin
10	C-P1-15	Valve, Operating Pin
11	C-S2-40	Valve, Spring
12	C-S7-3	Screen, Back-up Filter
13	C-F1-10	Filter
14	C-AF1-10	Filter Assy (Includes Filter & Screen)
15	C-G1-89	Filter Cover Gasket
16	C-C1-38	Filter Cover
17	C-S1-15266-001	Screw, 12-24 x 11/16" (10)
18	C-AF4-66	Fitting, Ball Check, Assy (Not Shown)
19	C-S4-18	Seat, Valve
20	C-W1-42	Washer, Seal Retaining





# CENTURY FUEL PRODUCTS

## MODEL C- VFF30 VACUUM FUEL LOCK/FILTER



### TECHNICAL DESCRIPTION

The **CENTURY Model C-VFF30** is a combination fuel lockoff and filter, engineered for use with LPG (liquid or vapor) or Natural Gas Vapor. It is available with hydrin, silicone and fluorosilicone diaphragms. A pressure of 0.5" Hg (1.69 kPa) is required to open the lockoff. The VFF30 is suitable for engines up to 325 hp (242 kW) at a maximum working pressure of 312 psi (21.51 Bar). The extra large capacity filter element is fully serviceable.

### TECHNICAL SPECIFICATIONS

Fuel Type ..... LPG Liquid/Vapor, Natural Gas Vapor  
Inlet Pressure (maximum).....312 psi (21.51 Bar)  
Flow Rate.....26.7 CFM (12.6 L/s)  
Operating Temperature Range ..... -40°F to +250°F (-40°C to +121°C)  
Filtration Requirement .....40 micron  
Vacuum Activation  
    Minimum Opening.....0.50" w.c. (0.12kPa)  
    Fully Opened.....11.5" w.c. (2.86 kPa)  
    Minimum Operating Opening.... 2.0" w.c. (0.50 kPa)  
Mounting Position ..... Vertical (as shown above)