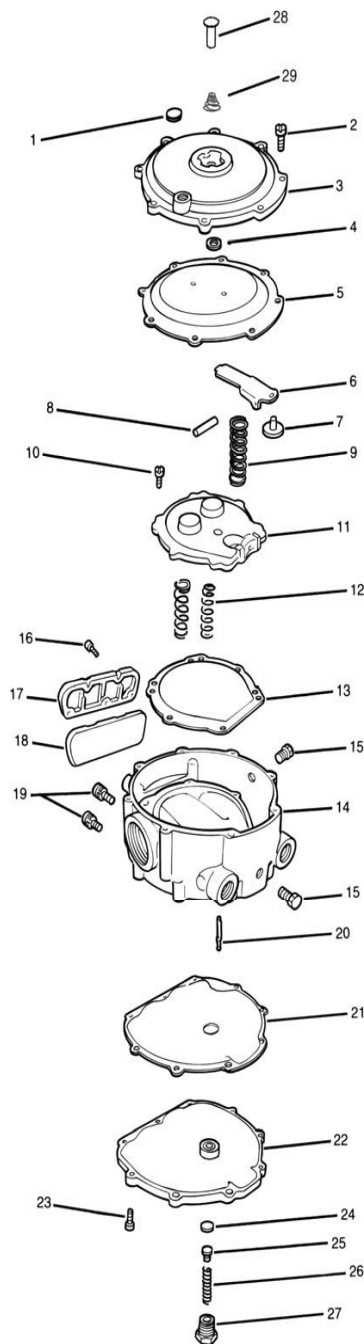


C-RK-L Repair Kit		
ITEM #	PART #	Description
1	C-S7-1	Screen, Atmospheric Vent
2	C-S1-59*	Screw, 8-32 x 5/8" SEMS RK(3)
3	C-AC1-63	Cover Ass'y, Secondary
4	C-W1-27	Washer, Hand Primer
5	C-AD1-31*	Diaphragm Ass'y, Secondary, Hydrin
6	C-L1-87	Lever, Secondary
7	C-S4-37*	Seat, Secondary
8	C-P1-7	Pin, Secondary Lever Fulcrum
9	C-S2-97	Spring, Secondary Regulator (Blue)
10	C-S1-59	Screw, 8-32 x 5/8" SEMS
11	C-C1-62	Cover, Primary Diaphragm
12	C-S2-92	Spring, Primary Regulator
13	C-AD1-32*	Diaphragm Ass'y, Primary
14	C-AB1-57	Body Ass'y
15	C-P3-13	Plug, Hex Head, 1/8" NPT
16	C-S1-59*	Screw, 8-32 x 5/8" SEMS RK(3)
17	C-C1-61	Cover, Water Passage
18	C-G1-118*	Gasket, Water Passage
19	C-S1-5	Screw, 1/4-20 x 5/8" SEMS
20	C-P1-34	Pin, Primary Valve
21	C-G1-119*	Gasket, Vaporizing Chamber
22	C-AC1-64	Cover, Vaporizing Chamber
23	C-S1-3*	Screw, 10-24 x 5/8" SEMS RK(3)
24	C-S4-18*	Seat, Primary
25	C-S4-23*	Seat, Support, Primary
26	C-S2-93	Spring Primary Valve
27	C-B3-25551	Bushing, Fuel Inlet
28	N/A	Pin, Primer
29	N/A	Spring, Primer

\* Item Included in Repair Kit



## C-RK-L

### MODEL L REGULATOR DESCRIPTION

The Model L is a two stage regulator/vaporizer. These units are coolant heated and are able to provide liquid vaporization to supply up to 325 hp (242 kW) peak or 200 hp (150 kW) continuous in industrial engine applications. The

Model L regulator provides a negative outlet pressure of -1.5" w.c. (-0.37 kPa). No optional pressures are available. The Model L offers economical performance with full features; rear fuel inlet, and primary and secondary diagnostic test ports. Optional silicone diaphragm materials are also available.

### SPECIFICATIONS

Fuel Type .....	LPG Liquid/Vapor
Inlet Pressure .....	
Maximum .....	312 psi (21.51 Bar)
Minimum .....	30 psi (207 kPa)
Outlet Pressure (Nominal) .....	-1.5" w.c. (0.37 kPa)
HP/kW .....	325 hp (242 kW) peak, 200 hp (150 kW) continuous
Operating Temperature Range ...	-40°F to +250°F (-40°C to +121°C)
Fuel Filtration .....	40 micron
Heating Chamber Source .....	Required for liquid LPG
Mounting Position .....	Vertical, with outlet down recommended. Horizontal position can be used when fuel contamination can be controlled with HD-5 specified LPG fuel.
Applications .....	Mobile, industrial and automotive
Certification .....	UL (AU1502) Inquire for specific ECE approval