

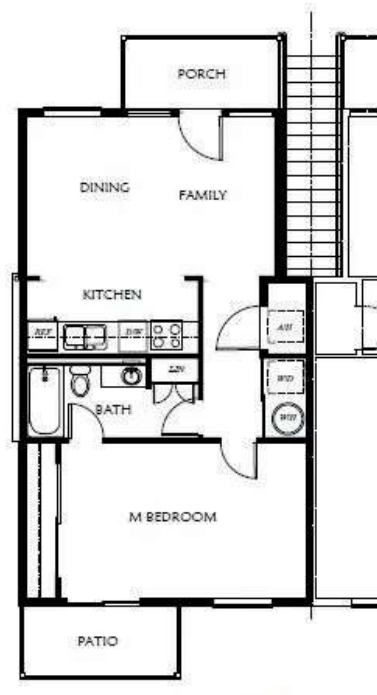
Ask about  
our current  
specials



## Designed for YOUR Life

Access to businesses such as restaurants, gyms, health providers, shopping, groceries, animal clinic, banks, hair salons, and pet grooming are all within walking distance.

Interstate 8 and the Area Service Highway are close by and allow you to access all areas of Yuma County and beyond quickly and safely. YCAT bus stops are within walking distance.



ADA COMPLIANT UNITS HAVE VARIATIONS OF DOORS AND APPLIANCES TO MEET REGULATIONS THAT COVER THESE APARTMENTS.  
FLOOR PLANS ARE FOR ILLUSTRATIVE PURPOSES ONLY. FEATURES ARE SUBJECT TO CHANGE AND/OR COULD VARY BY UNIT.

642 SQ. FT.

TYP. 1 BEDROOM END UNIT (1ST FLOOR)

1 Bedroom, 1 Bathroom, Kitchen  
& Living Room Sample Floorplan  
\$1300/month

3370 S Avenue 8E, Yuma, AZ 85365  
2 blocks South of 32nd Street

CONTACT US BY PHONE OR  
EMAIL

928-726-9248

propertymanager@gmail.com

ADA Accessible Units available



Designed for YOUR Life

The Cielo Verde Apartment Community is a mixture of 148 modern, beautiful and efficient 1-, 2- and 3- bedrooms apartments in 15 separate two-story buildings.

You may apply to lease at our website below or contact us for more information.

[www.cieloverdeapartments.com](http://www.cieloverdeapartments.com)



## Other Monthly Fees/unit

- RUBS (sewer, water & trash)
  - 1 Bed / 1 Bath - \$75
  - 2 Bed / 2 Bath - \$95
  - 3 Bed / 3 Bath- \$105
- Property Liability Insurance - \$15

## Move In Fees

Refundable Security Deposit

**\$600**

Pet Fee per pet up to 2 max

**\$300/each**

## Tenant Paid Utilities

Electricity and Internet access paid directly to vendor



In-Unit Washer/Dryer Combo



Stainless Steel appliances



Abundance of Natural Light via Doors/Windows



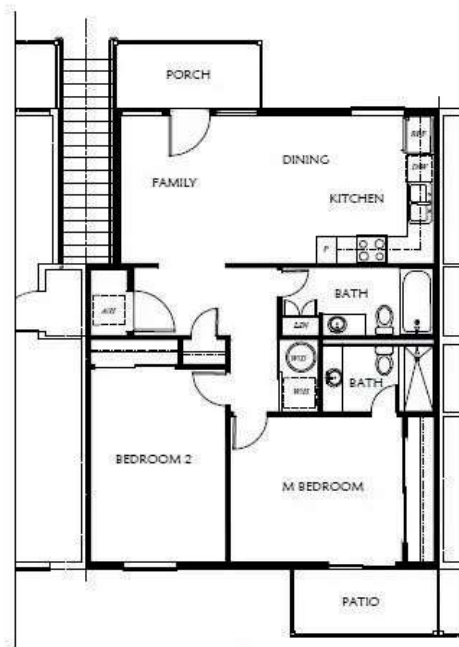
Deep Storage Cabinets in baths and kitchen



Tenant On-line portal to pay fees and rent



Pet Friendly



ADA COMPLIANT UNITS HAVE VARIATIONS OF DOORS AND APPLIANCES TO MEET REGULATIONS THAT COVER THESE APARTMENTS  
FLOOR PLANS ARE FOR ILLUSTRATIVE PURPOSES ONLY. FEATURES ARE SUBJECT TO CHANGE AND/OR COULD VARY BY UNIT

**844 SQ. FT.**

TYP. 2 BEDROOM / 2 BATH UNIT (1ST FLOOR)

2 Bedroom, 2 Bathroom, Kitchen & Living Room Sample Floorplan  
\$1500/month



ADA COMPLIANT UNITS HAVE VARIATIONS OF DOORS AND APPLIANCES TO MEET REGULATIONS THAT COVER THESE APARTMENTS  
FLOOR PLANS ARE FOR ILLUSTRATIVE PURPOSES ONLY. FEATURES ARE SUBJECT TO CHANGE AND/OR COULD VARY BY UNIT

**984 SQ. FT.**

TYP. 3 BEDROOM / 2 BATH END UNIT (2ND FLOOR)

3 Bedroom, 2 Bathroom, Kitchen & Living Room Sample Floorplan  
\$1750/month

## Apartment Facilities



Charcoal BBQ in Ramada Area



Clubhouse and Pool Available for rental



Swimming Pool & Hot Tub



Playground Area



Covered Parking available



Dog Stations



Onsite Property Manager



Multiple Vendors to choose from for Internet and Phone access



Some Furnished Units - Call for Price

## About Cielo Verde Apartments

Cielo Verde Apartments community is the next step in the Cielo Verde Story that began more than 25 years ago. The area was designed to give more flexibility in life-style choices to make it more livable, while increasing access to pedestrian activities close to home. We've designed them for YOUR life.