

#LoveLEESchools

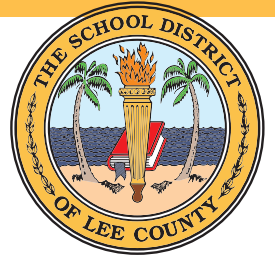
SAFE REOPENING PLAN

Interim guidance as of July 23, 2020



PERSONAL | PASSIONATE | PROGRESSIVE

TO OUR SCHOOL DISTRICT FAMILY,



These past months have been challenging for us as a community and school district. We closed a school year unlike any other, and the uncertainty of the pandemic has placed a heavy burden on all of us as we focus on the reopening of school this fall. The responsibility of planning a safe return to school while maintaining a high quality education for our students is not an easy one and we appreciate the community for understanding the challenges of this endeavor.

Over the last few months, our work as a district has focused on two major themes: mitigating the risk of Covid-19 through measures designed to protect our students, and maintaining a resolute commitment to the development of in-person reopening models. It is my hope that this **Reopening Schools Toolkit** reflects our District's focus and commitment to student and staff safety while ensuring that students reach their highest personal academic potential.

Planning the reopening of schools required us to think well beyond the normal challenges of starting a school year. We have worked diligently to research, plan and implement safety precautions and specific guidelines that would allow students to reenter the classroom. This work was not done alone, but in collaboration with our community partners, district staff, health leaders and Governance Team.

The resulting Reopening Schools Toolkit is a product of our "stronger together" mindset. The selected reopening model and school requirements have been recommended by the School District of Lee County PreK-12 Education Pandemic Response Task Force and have the endorsement of our local health agencies (Florida Department of Health, Lee Health).

This document reflects our detailed guidance and recommendations as of July 1, 2020. Please note that being flexible as a community will be key to our safe return, and that changes might be needed as we move closer to reopening.

Thank you to our community for your support during these trying times. A special thank you to our students, teachers and staff, who despite all the challenges continue to step up and be exemplary models in our community. They are the real heroes and we value them for their commitment and all they do to define our school district.

We are truly stronger together.



Sincerely,

Gregory K. Adkins, Ed.D.
Superintendent of Schools



THE SCHOOL BOARD OF LEE COUNTY

Mary Fischer, District 1 (*Chair*)
Debbie Jordan, District 4 (*Vice Chair*)
Melisa W. Giovannelli, District 2
Chris N. Patricca, District 3
Gwynetta S. Gittens, District 5
Betsy Vaughn, District 6
Cathleen O'Daniel Morgan, District 7

Response to *COVID-19*

(March - present)

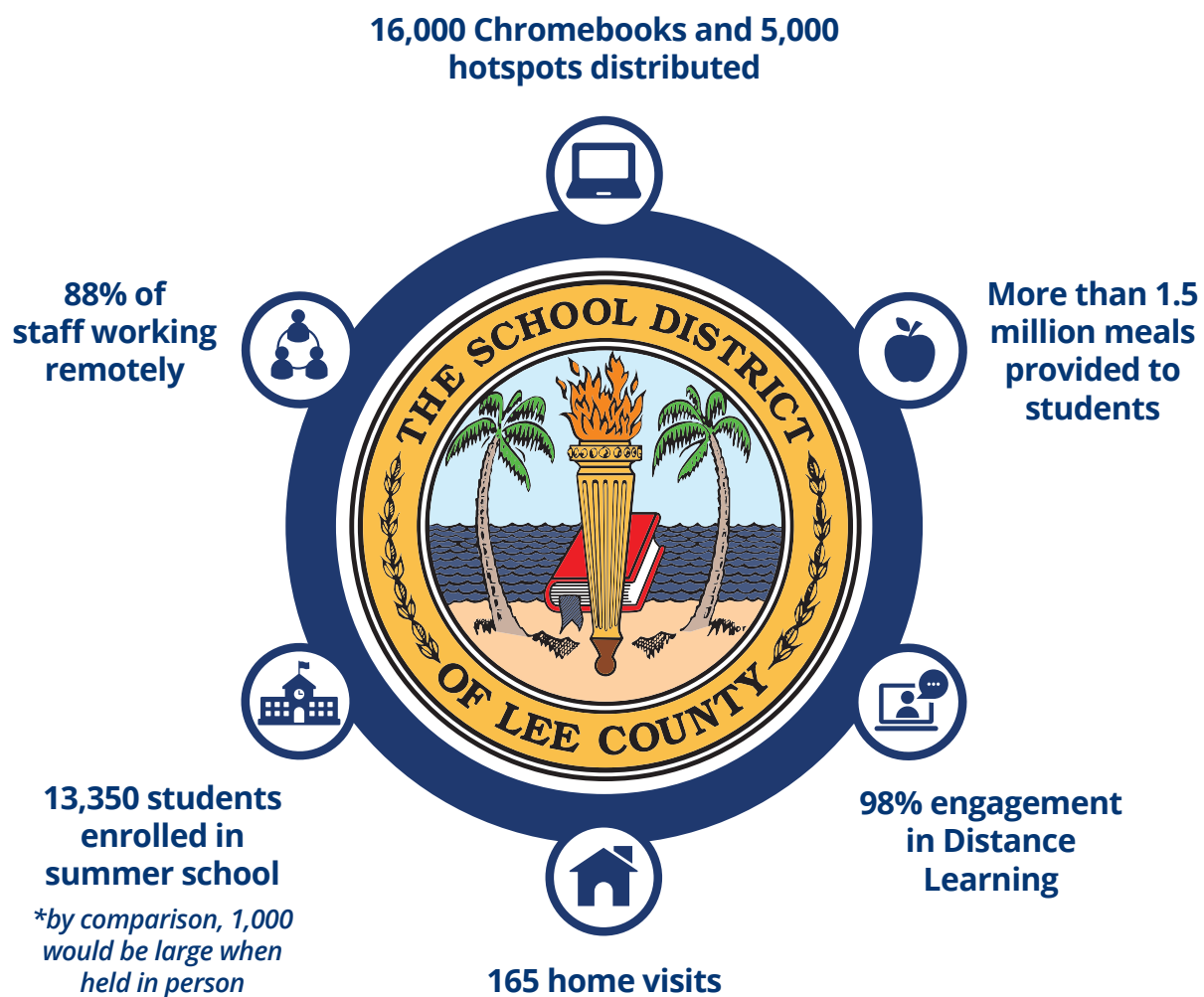


TABLE OF CONTENTS

► PREK-12 EDUCATION PANDEMIC RESPONSE TASK FORCE	6
• Purpose.....	6
• State of Florida Plan	6
• Considerations.....	7
• Task Force Members	8
► SELECTED REOPENING MODEL.....	9
• Research Snapshot.....	9
• Stakeholder Input.....	10
• Instructional Continuity	11
► SELECTED REQUIREMENTS AND RECOMMENDATIONS.....	16
• Guidance for additional health requirements.....	16
• COVID-19 general information.....	17
• Face coverings.....	18
• Protecting vulnerable populations.....	19
• Cleaning and hygiene.....	20
• Personal protective equipment and hygiene supplies	21
• Monitoring for symptoms	21
• Handling suspected, presumptive or confirmed positive cases	22
► GENERAL OPERATIONAL PROCEDURES.....	24
• General requirements for all schools	24
• Water and ventilation systems	25
• Transportation	26
► GENERAL DAY-TO-DAY SCHOOL REQUIREMENTS	28
• School procedures.....	28
• Office requirements	28
• Classroom setup.....	29
• Supplies	29
• Schedule	29
• General arrival screening process.....	30
• Parent dropoff	31
• Bus arrival process	31

▶ GENERAL DAY-TO-DAY SCHOOL REQUIREMENTS, CONTINUED	
• Walk to school/bike rider process	32
• Late arrival process	32
▶ POSITIVE SCREENING FLOW CHART AND PROTOCOLS	33
• Screening flow chart.....	33
• Positive screening protocol: Arrival at school	34
• Positive screening protocol: During the school day	35
• Other procedures	36
• Recess.....	36
• Hallway	36
• Cafeteria/media center procedures	36
• General Guidelines	37
• Dismissal	37
• Before/after school care and extracurricular activities.....	37
• Drills, emergency evacuations	38
▶ EXCEPTIONAL STUDENT EDUCATION (ESE)/504	39
• Meetings and services.....	39
• Therapies	40
• Psychological evaluations	41
▶ COPING AND RESILIENCE	42
▶ CHROMEBOOKS AND STUDENT SAFETY	43
▶ COMMUNICATIONS PLAN	44
▶ PARENT GUIDANCE	45
▶ JULY-AUGUST NEXT STEPS	45



PREK-12 EDUCATION PANDEMIC RESPONSE TASK FORCE

[CLICK TO RETURN TO TABLE OF CONTENTS](#)

PURPOSE

The purpose of The School District of Lee County PreK-12 Education Pandemic Response Task Force is to advise the Superintendent on the safe reopening and continued operation of schools during a global pandemic.

Meetings were held:

- June 4, 2020
- June 10, 2020
- June 17, 2020
- June 24, 2020
- July 7, 2020

STATE OF FLORIDA PLAN

- Governor Ron DeSantis and Education Commissioner Richard Corcoran presented Florida's plan to reopen schools on June 11, 2020. ***The reopening plan (Reopening Florida's Schools and the CARES Act) presented health and instructional recommendations for schools to open in-person learning in the fall of 2020.*** This plan served as a guide in the development of the District's Reopening Plan.

CONSIDERATIONS



Equitable Education: Every student should have access to equitable education in order to meet the District’s mission of ensuring each student reaches his/her highest personal potential.



Public Health and Safety: The plan to reopen schools must be rooted in sound medical judgement and driven by health metrics so students, employees and visitors feel safe.



Fiscal Prudence: The plan should support the highest practical level of operation while maintaining equitable education and public health and safety.



Public Confidence: An effective communication strategy is critical to ensuring public confidence in the reopening of schools.



“Throughout this, two constants remain – keeping our education community safe and ensuring our students receive a first class education in Florida. And our default is to always show compassion and grace.”

– Florida Education Commissioner Richard Corcoran, [Reopening Florida’s Schools and the CARES Act](#)



TASK FORCE MEMBERS

NAME	TITLE	ORGANIZATION
Betsy Vaughn	School Board Member	School District of Lee County
Dr. Mary Beth Saunders	Infectious Disease/Epidemiology	Lee Health
Char-nequa Smith (Shay)	Executive Community Health Nursing Director	Florida Department of Health, Lee County
Lt. Angel Queipo	Lieutenant	Lee County Sheriff's Office
Cpt. Jason Fields	Captain, Operations Division	Fort Myers Police Department
Harlan Parrish	President	FineMark National Bank & Trust, Lee Co.
Marshall Bower	President & CEO	Foundation for Lee County Public Schools
Marcus Goodson	Executive Director	Lee County Housing Authority
Isaac Dozier	Director, Community Development	City of Fort Myers Housing Authority
Kevin Daly	President	Teachers Association of Lee County
Samantha Hower	Teacher	Mariner High School
Heather Rodriguez-Wibbles	Teacher	Caloosa Middle School
Joseph Camputaro	Teacher	The Sanibel School
Jamie Michael	President	Support Personnel of Lee County
Carl Burnside	Principal	Dunbar High School
Melissa Layner	Principal	Bonita Springs Middle School Center for the Arts
Scott LeMaster	Principal	Manatee Elementary School
Scott Hertz	Parent Representative/President	District Advisory Committee
Amy-Jane McWilliam	Parent Representative, West Zone	Elementary, middle and high school parent
Brenda Clark	Parent Representative, West Zone	Elementary and high school parent
Angela Haas	Parent Representative, South Zone	Elementary school parent
Chrystal Vervaet	Parent Representative, South Zone	Elementary school parent
Jacqueline Lineberger	Parent Representative, East Zone	Middle and high school parent
Jewelene Harris	Parent Representative, East Zone	Middle and high school parent
Brooklyn Gossett	Student	Mariner High School, West Zone
Sedona Stewart	Student	Bonita Springs High School, South Zone
Yamicil Bermudez	Student	Lehigh Senior High School, East Zone



SELECTED REOPENING MODELS

[CLICK TO RETURN TO TABLE OF CONTENTS](#)

RESEARCH SNAPSHOT

Information for the development of these K-12 Education Pandemic Response Task Force selected reopening models was compiled from information from sources including:

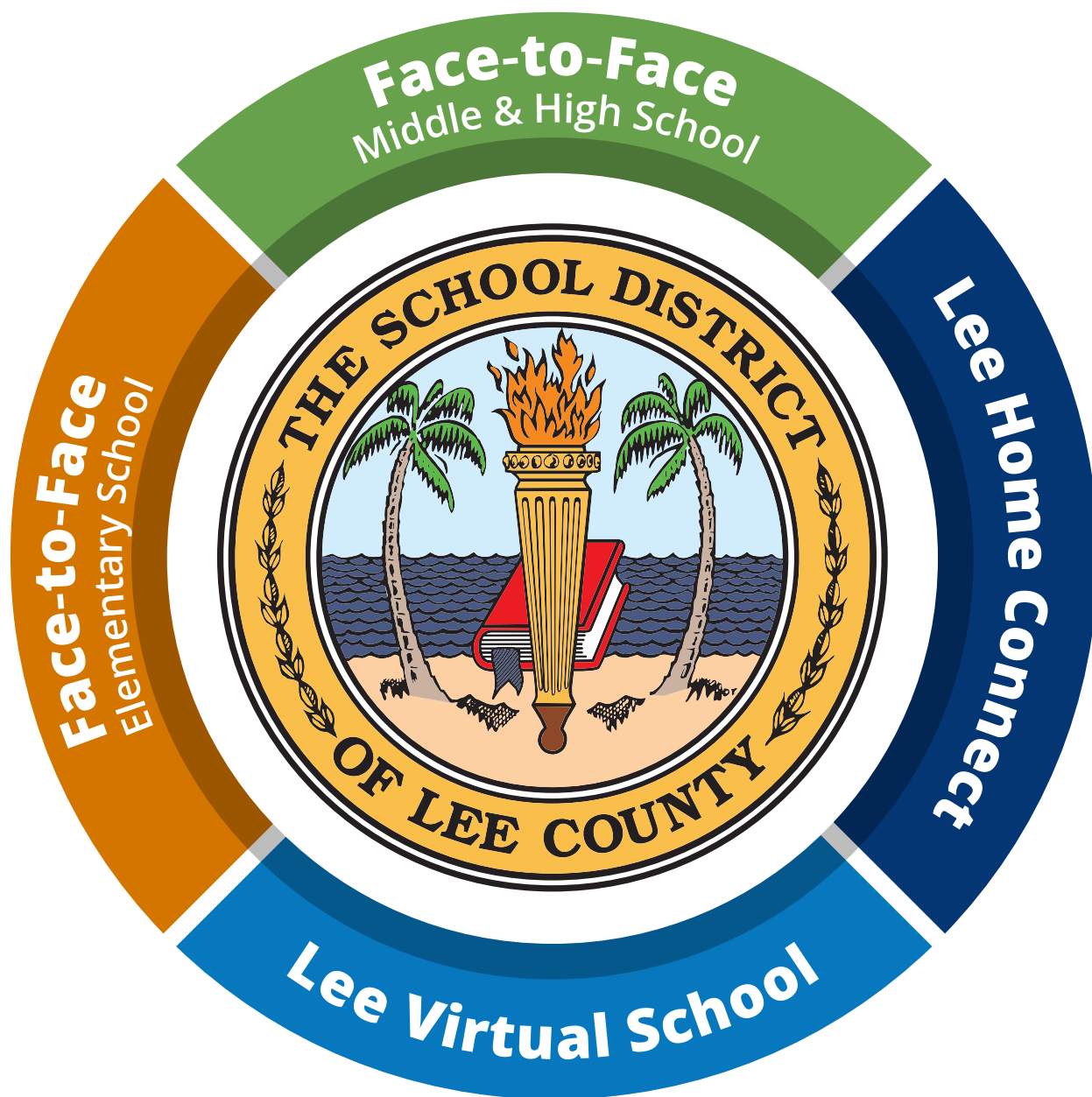
- American Academy of Pediatrics
- American School Counselor Association (ASCA)
- Center for Disease Control and Prevention
- Chiefs for Change
- Council of the Great City Schools
- Council of School Attorneys
- Edutopia
- Florida Association of District Schools Superintendents
- Florida Department of Education
- Florida District Plans
- Florida Educators Association (FEA)
- Florida Educational Negotiators (FEN)
- Florida Gulf Coast University
- Florida School Board Association
- Florida School Board Attorneys Association
- John Hopkins School of Education
- LRP National Institute
- National Association of School Nurses
- National Association of School Psychologists
- National Association of Social Workers
- School Social Worker Association of America
- Society for Human Resource Management
- Various State Department of Education Plans

STAKEHOLDER INPUT



- FLDOH – Lee County
- Lee Health
- Parents
- Board Members
- Principals
- Teachers
- Law Enforcement
- Students
- Curriculum & Instruction
- School Development
- Early Childhood
- Transportation
- Business Leaders
- Community Leaders
- Nurses
- Psychologists
- Social Workers
- ESOL
- ESE
- Student Services
- Safety and Security
- Planning
- Maintenance
- Construction
- Information Security & Assurance
- Compensation & Labor Relations
- Professional Development
- Staffing & Talent Management
- Insurance & Benefits
- Recruitment
- Diversity & Inclusion
- Business Services
- Food & Nutrition Services
- Procurement
- Budget
- Application Services
- Infrastructure Services

INSTRUCTIONAL CONTINUITY



► Face-to-Face

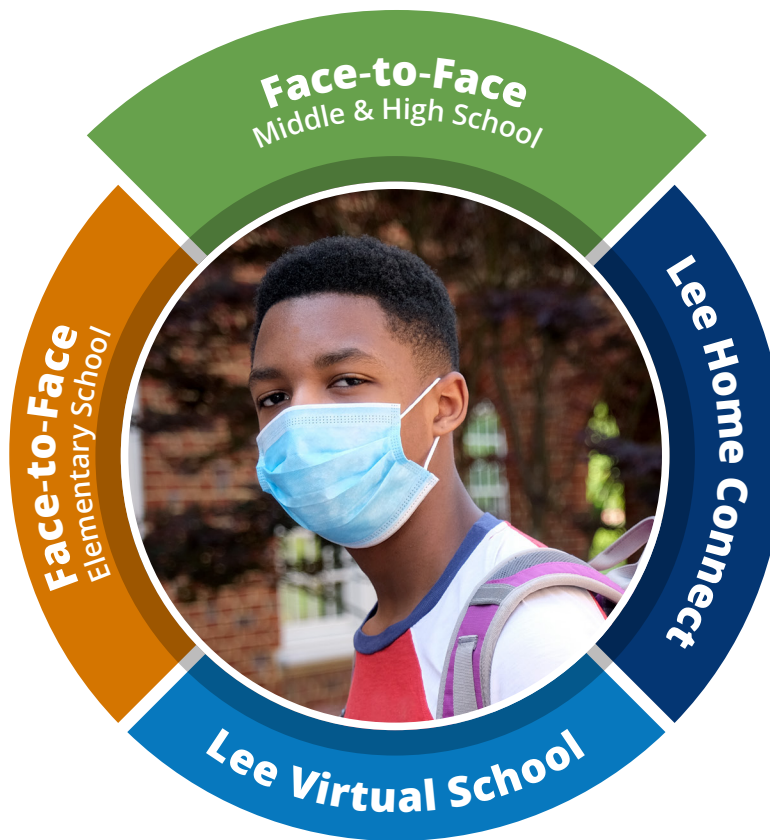
The School District of Lee County (SDLC) plans to reopen schools with the full array of services for the benefit of our students and families. The Face-to-Face model will be an option for all students (PreK-12). The District is committed to providing the safest environment possible for our students that choose the in-person instructional experience.

► Elementary School



- Elementary school (PreK-5) students will have the option to return to school for face-to-face instruction. This includes all services for Exceptional Student Education (ESE) and English Language Learner (ELL) students who are being served in an ESOL program (LY).
- Students and families who select the face-to-face model will adhere to new safety guidelines and requirements to mitigate risk. These advanced health protocols are detailed throughout the SDLC Reopening Schools Toolkit.
 - Students remain in their classroom all day, with the exception of outdoor recess and PE.
 - Special area teachers (Art, Music, STEM, etc.) rotate to classrooms. Schools will develop a modified special area schedule.
 - Lunch is provided in the classroom and/or in the cafeteria if spacing and capacity are allowable.
 - Recess will be conducted with the same students and teacher.
- Face coverings/masks will be required in the Face-to-Face model of instruction except when eating breakfast and lunch.

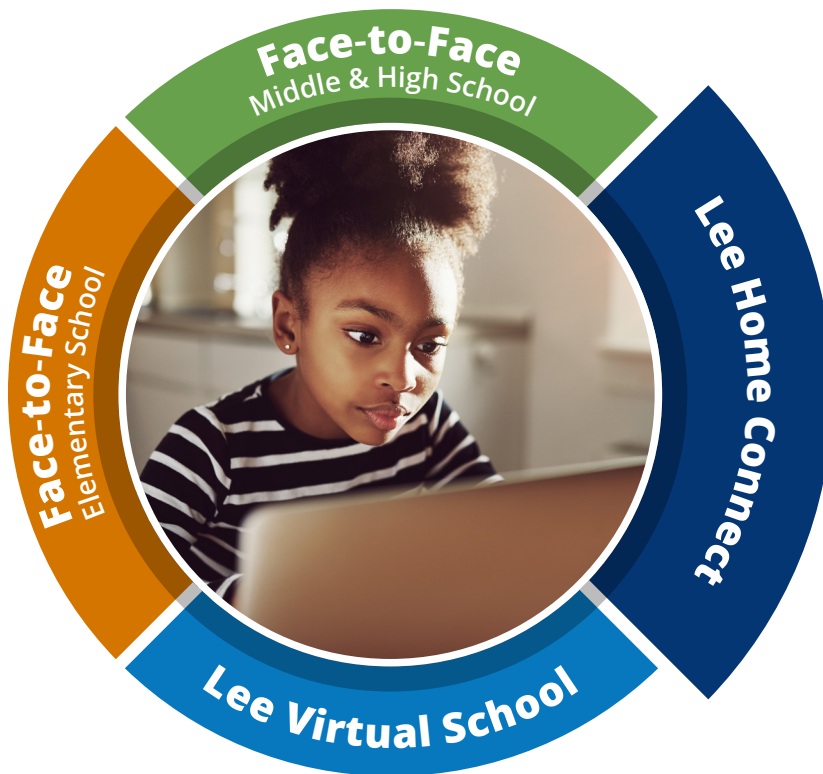
► Middle and High School



Middle and high school (grades 6-12) students will have the option to return to school for face-to-face instruction. This includes all services for Exceptional Student Education (ESE) and English Language Learner (ELL) students who are being served in an ESOL program (LY). Students and families who select the face-to-face model will adhere to new safety guidelines and requirements to mitigate risk. These advanced health protocols are detailed throughout the SDLC Reopening Schools Toolkit.

- Grades 6-10 will move by teams or grade level.
- Lunch will be in groups with social distancing.
- Hallway lockers will not be used.
- Face coverings/masks will be required in the Face-to-Face model of instruction except when eating breakfast and lunch.

► Lee Home Connect



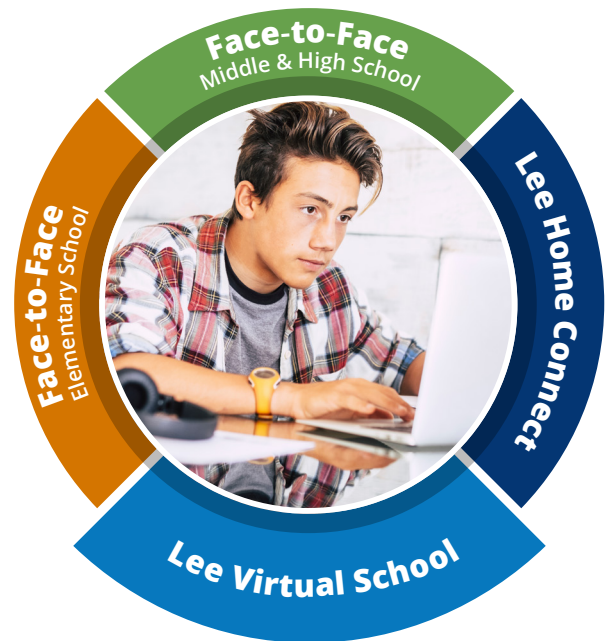
All students (Pre-K-12th) will have the option to select a school-based virtual option. Students are assigned to a teacher from their school for at home, full-time online learning. Students can choose to return to their regular school at the end of each grading period or at principal discretion.

- Parent can choose Lee Home Connect option via the Parent Selection Survey (deadline to register is July 30, 2020).
- Students paired with teacher(s) from their school.
- Virtual instruction is live during school hours.
- Return to campus after grading periods or principal discretion.

► Lee Virtual School

Families/students who want to remain in distance learning can enroll in [Lee Virtual School](#) for a minimum of one semester. Students will not lose their spot at their current school if they decide to unenroll from Lee Virtual and return to their current school at the end of the semester.

Deadline to register is August 3, 2020.



► Homeschool

Students are enrolled in the District's full-time Home Education Program, where the parent or guardian teaches the child at home.

► Distance Learning

Distance Learning for students enrolling in face-to-face instruction must be implemented when the decision is made (in collaboration with local health officials) to shut down a classroom, school or the District.





SELECTED REQUIREMENTS AND RECOMMENDATIONS

— [CLICK TO RETURN TO TABLE OF CONTENTS](#) —

GUIDANCE FOR ADDITIONAL HEALTH REQUIREMENTS

- Governor Desantis' [Florida COVID-19 Resource Center](#) is a one-stop gateway to Florida's experts in recovery and reopening.
- [Safe, Smart, Step by Step, Plan For Florida's Recovery](#) Task Force report
- [Florida Department of Health's \(FDOH\) COVID-19 resource page](#)
- [FDOH's guidance for schools and child care](#) and [Florida Department of Children and Families \(FDCF\) Child Care Services guidance](#)
- The benchmarks for reopening in the Safe, Smart, Step-by-Step Plan utilized the White House and CDC [Guidelines for Opening America Again](#) as a baseline.
- Local county health departments are a great partner for all educational programs ([Lee County Health Department](#))
- [American Academy of Pediatrics](#) COVID-19 Planning Considerations: Guidance for School Re-entry

COVID-19 GENERAL INFORMATION

- COVID-19 is mostly spread by respiratory droplets released when people talk, cough or sneeze. The virus may spread to hands from a contaminated surface and then to the nose, mouth or eyes, causing infection. That's why personal prevention practices (*such as handwashing and staying home when sick*) and environmental cleaning and disinfection are important practices covered in this health guidance.
- Any scenario in which many people gather together poses a risk for COVID-19 transmission. Children generally experience mild symptoms with COVID-19.
- Symptoms may appear 2-14 days after exposure to the virus. People with these symptoms may have COVID-19:
 - Fever or chills
 - Shortness of breath or difficulty breathing
 - New loss of taste or smell
 - Congestion or runny nose
 - Cough
 - Fatigue
 - Muscle or body aches
 - Sore throat
 - Headache
 - Nausea & Vomiting
 - Diarrhea
- This list does not include all possible symptoms.
- Fever is determined by measuring a temperature of 100.4° F or greater.
- While symptoms in children are similar to adults, children may have milder symptoms. Reported symptoms in children include cold-like symptoms such as fever, runny nose and cough. Children with COVID-19 may not initially present with fever and cough as often as adult patients. Also, there are concerns of the multi-system inflammatory syndrome (MIS-C) which causes a rash and inflammation in vital body organs.
- Fortunately, there are many actions that school and district administrators can take to help lower the risk of COVID-19 exposure and spread during school sessions and activities. Families and students will use this guidance to understand what health practices will be in place when students return to school. All public schools will be required to follow health practices in this guidance.

Families and students will use this guidance to understand what health practices will be in place when students return to school.

FACE COVERINGS

- Face coverings/masks will be required in the Face-to-Face model of instruction except when eating breakfast and lunch.
- Masks shall adhere to the Student Code of Conduct, which states: “Apparel, emblems, insignias, badges or symbols that promote the use of alcohol, drugs, tobacco or any other illegal activity are prohibited.”
 - [Elementary Code of Conduct, pages 80-81](#)
 - [Secondary Code of Conduct, pages 82-83](#)
- As feasible, cloth face coverings can be an important mitigation tool for individuals and families when not able to maintain social distancing.
- The CDC provides comprehensive recommendations for the [use of cloth face coverings to help slow the spread of COVID-19](#).
- Educational programs should be mindful that young children may initially fear individuals wearing a face covering, and therefore should consider ways to gently introduce the idea.
- Cloth face coverings are meant to protect other people in case the wearer is unknowingly infected but does not have symptoms.

Schools are required to:

- Share guidance and information with staff, students and families on the proper use, wearing, removal and cleaning of cloth face coverings, such as the CDC’s guidance on wearing and removing cloth face masks and the CDC’s use of cloth face coverings.
- Teach and reinforce the use of cloth face coverings for students and staff on buses or other transportation vehicles, inside school buildings and anywhere on school grounds, including outside.



PROTECTING VULNERABLE POPULATIONS

Individuals who are considered high-risk for severe illness due to COVID-19 include people who:

- Are 65 years of age or older
- Have a high-risk condition that includes:
 - Chronic lung disease or moderate to severe asthma
 - Heart disease with complications
 - Compromised immune system
 - Severe obesity (*body mass index of 40 or higher*)
 - Other underlying medical conditions, particularly if not well-controlled, such as diabetes, renal failure or liver disease

Schools are required to:

- Systematically review all current plans (*i.e. Individual Healthcare Plans, Individualized Education Plans and 504 plans*) for accommodating students and staff with special healthcare needs and updating their care plans as needed to decrease their risk for exposure to COVID-19.
- Create a process for students/families and staff to self-identify as high risk for severe illness due to COVID-19 and have a plan in place to address requests for alternative learning arrangements or work reassignments.
- Students who are home for an extended period of time due to illness but able to participate in instruction (*i.e., during a 14-day quarantine*) will be provided instruction via distance learning or through assignments posted in Google classroom(s).
- If a student does not have access to a computer at home, a Chromebook and hotspot (*if needed*) will be distributed to the student.



[Washing hands with soap for 20 seconds](#) or using hand sanitizer reduces the spread of disease. Use hand sanitizer with at least a 60 percent alcohol if soap and water are not available.

CLEANING AND HYGIENE

Schools are required to:

- Provide adequate supplies to support healthy hygiene behavior (*i.e. soap, hand sanitizer with at least 60% alcohol for safe use by staff and older children, paper towels and tissues*).
- Teach and reinforce handwashing with soap and water for at least 20 seconds and/or the safe use of hand sanitizer that contains 60% alcohol by staff and older children.
- Increase monitoring to ensure adherence among students and staff.
- Supervise the use of hand sanitizer by students and ensure that children with skin reactions to this product only use soap and water.
- Reinforce handwashing during key times such as:
 - Before, during and after preparing food
 - Before eating food
 - After using the restroom
 - After blowing your nose, coughing or sneezing
 - After touching objects with bare hands which have been handled by other individuals
- Custodial team will systematically and frequently check and refill hand sanitizers.
- Encourage staff and students to cough and sneeze into their elbow, or to cover with a tissue. Used tissues should be thrown in the trash and hands should be washed immediately with soap and water for at least 20 seconds.
- Establish a schedule for and perform ongoing and routine environmental cleaning and disinfection of high-touch areas (*i.e., door handles, stair rails, faucets handles, toilet handles, playground equipment, drinking fountains, light switches, desks, tables, chairs, kitchen countertops, cafeterias and service tables, carts, and trays*) with an EPA-approved disinfectant for SARS-CoV-2 (*the virus that causes COVID-19*).
- Ensure safe and correct use and storage of cleaning and disinfection products, including securely storing and using products away from children and allowing for adequate ventilation when staff use such products.
- Ensure that all non-disposable food service items are minimally handled and washed with hot water and soap or in a dishwasher, or use disposable food service items such as plates and utensils.
- [Sanitize SMART Boards and Promethean Panels.](#)
 - Protect Promethean Panels from deep cleaning chemical exposure.

PERSONAL PROTECTIVE EQUIPMENT AND HYGIENE SUPPLIES

The District will provide each school with personal protective equipment, including, but not limited to, this list. The District will establish a delivery schedule for these items to keep each location adequately stocked.

- **Masks:** Cloth/disposable masks will be provided to each location for staff and students.
- **Gloves:** Beyond the normal requirement for custodial, food service and clinic, individuals taking temperatures of students will need gloves.
- **Hand sanitizer:** Dispensers will be installed/placed throughout each school for student and staff use.
- **Thermometers:** Multiple touchless thermometers per school will be provided for temperature taking.
- **Gowns:** For limited use in isolation areas and special populations
- **Wipes and soap**

MONITORING FOR SYMPTOMS

Conducting regular screening for symptoms and ongoing self-monitoring throughout the school day can help reduce exposure. Staff and students should be encouraged to self-monitor for symptoms such as fever, cough or shortness of breath. If a student develops symptoms throughout the day, they must notify an adult immediately. More information on how to monitor is available from the CDC.

Parents are expected to screen children prior to sending to school. Children should be kept home if they display any of the following symptoms: *body temperature of 100.4°F or higher, chills, cough, shortness of breath, diarrhea, fatigue, muscle and/or body ache, headache, loss in taste/smell, sore throat, running nose, nausea/vomiting.*

Schools are required to:

- Verify staff health symptoms daily through the Lee Clock health screening.
- Do not take temperature orally (*under the tongue*) because of the risk of spreading COVID-19 from respiratory droplets from the mouth.
- Enforce staff and students stay home if:
 - They have tested positive for or are showing COVID-19 symptoms, until they meet criteria for return.
 - They have recently had close contact with a person with COVID-19, until they meet criteria for return.

- Conduct daily temperature screenings for all students entering the school facility. *Fever is determined by a measured temperature of 100.4°F or greater.*
- Individuals waiting to be screened must stand six feet apart from each other. Use tape or other makers on the floor for spacing.
- The staff taking temperatures must wear a cloth face covering and must stay six feet apart, unless taking a temperature.
- Use a touchless thermometer, if one is available.
- If a touchless thermometer is not available, use a tympanic (*ear*), digital axillary (*under the arm*), or temporal (*forehead*) thermometer. Use disposable thermometer covers that are changed between individuals.
- Staff must clean and sanitize the thermometer using the manufacturer's instructions between each use.
- Staff must wash hands or use hand sanitizer before touching the thermometer.
- Staff must wear gloves and change between direct contact with individuals, and must wash hands or use hand sanitizer after removing gloves.

HANDLING SUSPECTED, PRESUMPTIVE POSITIVE CASES

Schools are required to:

- Immediately isolate symptomatic individuals to the designated area at the school, and send them home to isolate.
- Establish a dedicated space for symptomatic individuals that will not be used for other purposes. This space must be different from the clinic and have clinic cots and/or chairs to hold students until they are picked up from school.
- Ensure symptomatic students remain under visual supervision of a staff member who is at least six feet away. The supervising adult should wear a cloth/disposable face covering.
- Require the symptomatic person to wear a cloth face covering or a cloth/disposable mask while waiting to leave the facility.
- Require school nurses or delegated school staff that provide direct patient care to wear appropriate Personal Protective Equipment (PPE) and perform hand hygiene after removing PPE. [Refer to the Infection Control Supplies Checklist for the type of PPE needed.](#)



- If a person is diagnosed with COVID-19 by a medical professional based on a test or their symptoms, or does not get a COVID-19 test but has had symptoms, they should not be at school and should stay at home until they *(or a family member if younger child)* can answer YES to all three questions:
 - Has it been at least 10 days since the individual first had symptoms?
 - Has it been at least 3 days since the individual had a fever (without using fever-reducing medicine)?
 - Has it been at least 3 days since the individual's symptoms have improved, including cough and shortness of breath?
- Ensure that if a person with COVID-19 was in the school setting while infectious, school administrators contact the Health Services Coordinator, who will coordinate with local health officials.
- If a student/employee has been diagnosed with COVID-19, but does not have symptoms, they must remain out of school until 10 days have passed since the date of their first positive COVID-19 diagnostic test, assuming they have not subsequently developed symptoms since their positive test.
- If a student or employee has been diagnosed with COVID-19 or has been presumed positive by a medical professional due to symptoms, they are not required to have documentation of a negative test in order to return to school. They can return after 10 days from their first symptom and must be fever- and symptom-free.
- If a student/employee has been determined to have been in close contact with someone diagnosed with COVID-19, they must remain out of school for 14 days since the last date of exposure.



GENERAL OPERATIONAL PROCEDURES

[CLICK TO RETURN TO TABLE OF CONTENTS](#)

GENERAL REQUIREMENTS FOR ALL SCHOOLS

- Provide social distancing floor/seating markings in waiting and reception areas.
- Extra furniture will be stored in an available space within the school.
- Provide marks on the floors of restrooms and locker rooms (*if available*) to indicate proper social distancing (*or teach three floor tiles 2x2 or three ceiling tiles*).
- Limit nonessential visitors and activities involving external groups or organizations.
- Parent conferences can be conducted using the options of Google Meet and/or phone.
- Discontinue the use of vending machines and/or school stores.
- Place physical barriers for protection at the reception desks and similar areas.
- Discontinue activities that involve bringing together large groups of people or activities that do not allow for social distancing, including assemblies, in-person field trips, large groups using playground equipment simultaneously, etc.
- Incorporate virtual events such as field trips, parents/family meetings, assemblies and performances where possible.
- [Signage clearly displayed with health and safety reminders.](#)

WATER AND VENTILATION SYSTEMS

When reopening a building after it has been closed for a long period of time, it is important to keep in mind that reduced use of water and ventilation systems can pose their own health hazards. There is an increased risk for Legionella and other bacteria that come from stagnant or standing water.

Schools are required to:

- Take steps to ensure that all water systems and features (*e.g. sink faucets, drinking fountains, etc.*) are safe to use after a prolonged facility shutdown by following the CDC's Guidance for Reopening Buildings After Prolonged Shutdown or Reduced Operation, to minimize the risk of diseases associated with water.
- Ensure ventilation systems operate properly.

The Maintenance Services Department will:

- Install centralized filtered drinking stations (*minimum of one per school*).
- Perform evaporator coil cleanings, District-wide, prior to the start of school.
- Upgrade heating, ventilation and air conditioning (HVAC) filter media and adjust the filter change-out program from quarterly to every 60 days
- Continuously monitor school building CO2 levels to increase fresh air circulation and achieve the desired standard for proper air exchanges
- Have the Maintenance Department Building Services Zone Supervisor(s) perform daily spot checks, at schools District-wide, to ensure that facilities are performing building cleanings per the District's Custodial Cleaning Guidelines.



- Adjust some custodial work schedules to a day shift, while school is in session and buildings are student occupied, to ensure continuous cleanings of high traffic areas.
- Remediate gyms, wrestling mats and locker rooms as they are extremely-high traffic areas where bodily fluids and/or viruses can be transferred.

TRANSPORTATION

As the State of Florida recently acknowledged on page 58 in the [Florida Department of Education CARES Act Re-Opening of School guidelines](#), “six feet of distance between desks is not feasible for most classrooms, and almost never for school buses.” Due to this inability to feasibly operate with full social distancing, additional safety measures are necessary to diminish risk, including facial coverings.

Transportation services will follow guidelines to safely transport students. The standard capacity option is to provide transportation services with limited distancing between students but instead an emphasis on face-covers/masks and other protective measures (*e.g.: sanitizer, air flow strategies, utilizing windows, etc.*)

The following guidelines are recommended for student transportation vehicles (*e.g. buses, vans*):

- The SDLC requires all bus passengers wear masks due to an inability to fully socially distance. As stated by the CDC: “Face coverings should be worn by staff and students as feasible, and are most essential in times when physical distancing is difficult - for example, on a school bus.”
- Clean and disinfect transportation vehicles regularly. Children must not be present when a vehicle is being cleaned.
- Ensure safe and correct use and storage of cleaning and disinfection products, including storing products securely away from children and adequate ventilation when staff use such products.
- Clean and disinfect frequently touched surfaces in the vehicle (*e.g. surfaces in the driver’s cockpit, hard seats, arm rests, door handles, seat belt buckles, light and air controls, doors and windows, and grab handles*) prior to morning routes and prior to afternoon routes.
- Keep doors and windows open when cleaning the vehicle and between trips.
- Clean, sanitize and disinfect equipment including items such as car seats and seat belts, wheelchairs, walkers and adaptive equipment being transported to schools.
- Enforce that if an individual becomes sick during the day, they must not use group transportation (bus/van) to return home.

- If a driver becomes sick during the day, they must follow protocols outlined above and must not return to drive students. The bus will be pulled from service until it can be thoroughly disinfected.
- Require use of cloth masks and hand sanitizer (*with at least 60% alcohol*) to support healthy hygiene behaviors on all school transportation vehicles for safe use by staff and older children.
- Consider keeping windows open while the vehicle is in motion to help reduce the spread of the virus by increasing air circulation, if appropriate and safe.
- If feasible, park vehicles in a safe location away from the flow of traffic so that the screening can be conducted safely.

Six feet of distance between seats is almost never feasible for school buses. Transportation services will follow guidelines to safely transport students with additional safety measures.





GENERAL DAY-TO-DAY SCHOOL REQUIREMENTS

— [CLICK TO RETURN TO TABLE OF CONTENTS](#) —

SCHOOL PROCEDURES

► Office Requirements

- Social distancing in the office areas will be maintained, including floor markings and signage.
- Writing utensils should not be shared. However, in the case a writing utensil is shared a “used” bin should be established to gather shared utensils. Throughout the day, school personnel should use gloves and wipe down each pen with the required cleaning supply and place it back into the “new” utensil bin.
- Schools will label a container with a lid “U.S. Mail” and place the container outside of the main office door. The U.S. Postal Service will pick up and drop off mail in the labeled container.
- Contracted personnel (*ie. speech pathologists, mental health counselors, DCF, etc.*) sign the [health screening form](#) upon arrival at the main office.

► Classroom Setup

- Disposable surface wipes will be available in every classroom, computer lab, multipurpose room, common area and other identified areas on campus with a high level of traffic.
- Arrange desks or seating so that students are separated from one another by six feet when feasible.
- Designate one-way entrance and exit doors for classrooms and restrooms to reduce the chance that people meet face to face based on availability and as appropriate.

► Supplies

- Keep students' personal items separate and in individually labeled cubbies, containers and/or student backpacks. Student backpacks remain at the student's desk.
- Students bag up their individual materials, manipulatives and all other supplies to be stored in their individual spaces (*desks, chair pockets, etc.*) for the evening.
- Limit use of classroom materials to small groups and disinfect between uses, or provide adequate supplies to assign for individual student use.
- Students will bring their own PERSONAL water bottles to school pre-filled with water. Schools will develop a process for refilling the water bottles. Schools will supply cups for those students who do not have a personal water bottle.
- Schools will develop a plan for limiting the use of water fountains and cleaning of water fountains.
- Students will wash their hands or use hand sanitizer before and after each class period.

► Schedule

- Allow time between activities for proper cleaning and disinfection of high-touch surfaces.
- PreK-5 elective teachers will rotate to the classrooms with the exception of Physical Education and recess.
- PreK-5 will develop cohorts of students to remain together during the day for interventions/enrichment activities and will be the same cohort for Physical Education.
- Physical Education

- **Elementary**

- Required 150 minutes of PE weekly and 20 minutes of daily recess.
- PE cohorts will be established and the cohort will remain with the cohort supervisor for the year.
- Social distancing will be utilized.
- Utilize hand sanitizer before and after attending PE.
- Limit sharing of supplies/equipment as appropriate.

- **Secondary**

- PE cohorts will be established and the cohort will remain with the cohort supervisor for the remainder of the course.
- Establish marking system for social distancing.
- Utilize hand sanitizer before and after attending PE.
- Limit sharing of supplies/equipment as appropriate.
- Social distancing will be utilized.

- Grouping of students to allow for staggered arrival/departure/lunch times (*i.e. grade level, teaming, etc. in the same building location instead of department buildings*).
- No student aides during the 2020-2021 school year.

► **General Arrival Screening Process**

- Students will receive a temperature check daily upon arrival to the school building.
- Temperature checks will occur at the locations determined by the school administration.
- Students with a temperature at or above 100.4°F will be held in the school's isolation room. Parent will be contacted to pick up his/her child. The student goes home and follows the District's illness policy.
- Students that have a temperature less than 100.4°F will be allowed to enter the building and follow the school's morning procedures.
 - Students will grab their breakfast on the way to their homeroom and eat in the classroom with their cohort.
- [Screening questions will be utilized as a back-up plan for checking temperatures if thermometers are not available.](#)
- Students will be reminded daily of personal hygiene recommendations through announcements and posters throughout the building.
- Hand sanitizer stands will be at high traffic areas for student and staff use.



- Students will be encouraged to bring personal hand sanitizer.
- Students will be reminded to wash their hands regularly throughout the day.

► **Parent Dropoff Process**

- Students will have their temperature checked prior to getting out of their car.
- Students with a temperature at or above 100.4°F will not be allowed to exit their car. The student goes home and follows the [District's Illness Policy](#).
- Students with a temperature less than 100.4°F will be allowed to enter the building and follow the school's morning procedures. Student routes for entering classrooms will be determined by the school administration.

► **Bus Arrival Process**

- Buses will stagger an unloading process to allow for social distancing as they arrive with temperature checks.
- Rainy day temperature checks will be in a school predetermined area.
- Students with a temperature at or above 100.4°F will be held in the school's isolation room. Parent will be contacted to pick up his/her child. The student goes home and follows the [District's Illness Policy](#).
- Students with a temperature less than 100.4°F will be allowed to enter the building and follow the school's morning procedures. Bus student routes for entering classrooms will be determined by the school administration.

► Walk to School/Bike Rider Process

- Students will enter the school building after a temperature check and following social distancing.
- Students with a temperature at or above 100.4°F will be held in the school's isolation room. Parent will be contacted to pick up his/her child. The student goes home and follows the [District's Illness Policy](#).
- Students with a temperature less than 100.4°F will be allowed to enter the building and follow the school's morning procedures. Student routes for entering classrooms will be determined by the school administration.

► Late Arrival Process

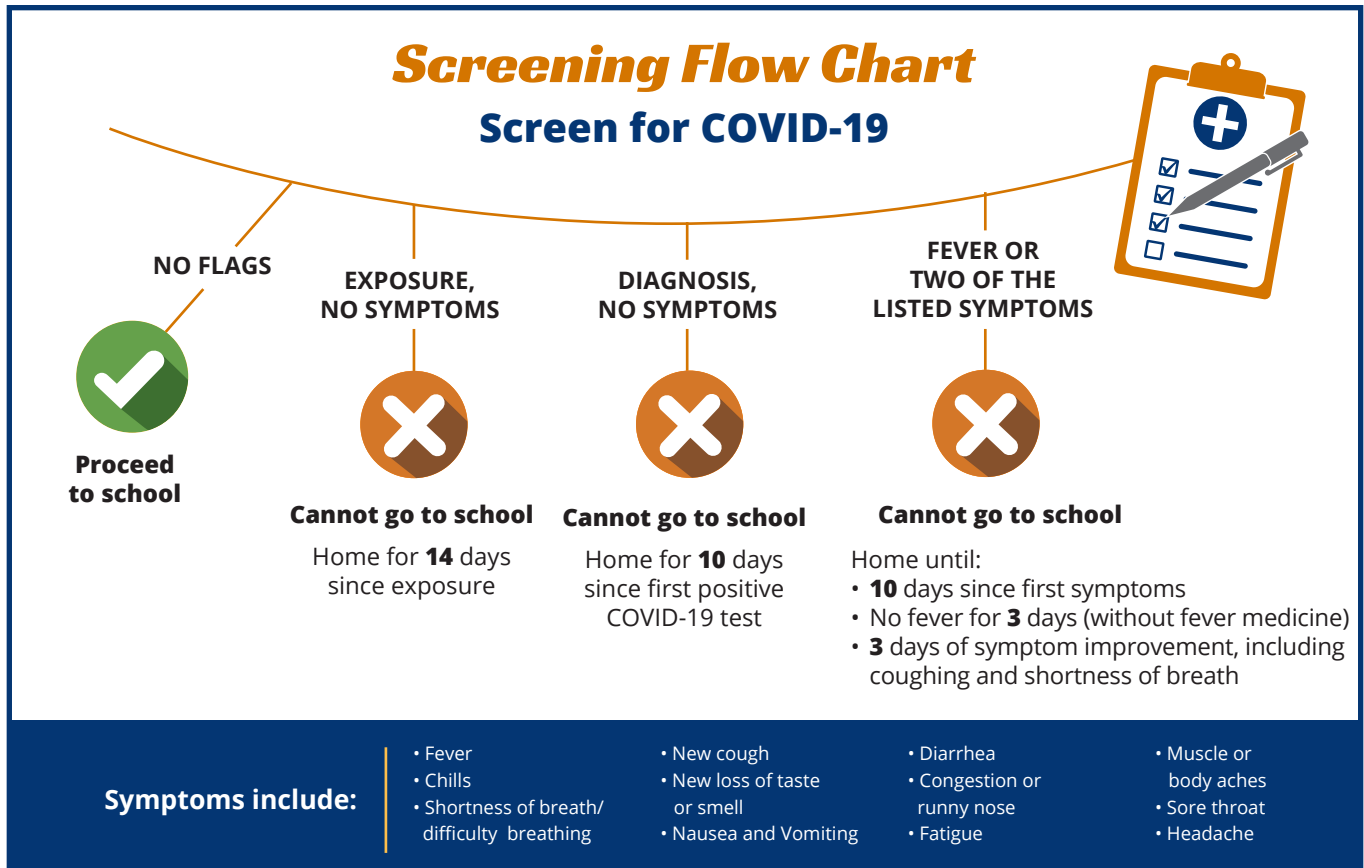
- Parent/guardian parks vehicle in parking lot.
- Parent/guardian comes to the door, shows ID and states they are here to check in his/her child.
- Office staff conducts temperature screening (*outside the door*) prior to students entering the building.
- If the student has a temperature of 100.4°F or greater, the student goes home and follows the [District's Illness Policy](#).
- If the student does not have a fever, the student proceeds to the classroom with an escort, if needed.
- Office staff enters the time and reason for late arrival into our FOCUS program.





POSITIVE SCREENING FLOW CHART AND PROTOCOLS

[CLICK TO RETURN TO TABLE OF CONTENTS](#)



Positive Screening Protocol

ARRIVAL AT SCHOOL

WHO	EXPOSURE, NO SYMPTOMS	DIAGNOSIS, NO SYMPTOMS	SYMPTOMS
	Staff or student shares they were exposed to someone with COVID-19 within the last two weeks but is NOT symptomatic	Staff or student shares they were diagnosed with COVID-19 less than 10 days ago but it is NOT symptomatic	Staff or student presents with at least one of the following COVID-19 symptoms: fever, chills, shortness of breath, difficulty breathing, new cough or loss of taste or smell
Staff Member or Student: A designated individual (e.g., parent or guardian) is PRESENT to immediately support child to get home or to medical care safely	Immediately go home <ul style="list-style-type: none"> <input type="checkbox"/> Notify local health department and follow their procedures <input type="checkbox"/> Can return to school once it has been 14 days since last close contact, if they do not develop symptoms <input type="checkbox"/> Students and staff can participate in remote learning and teaching (if applicable) when out 	Immediately go home <ul style="list-style-type: none"> <input type="checkbox"/> May return 10 days after first positive COVID-19 test, if they did not subsequently develop symptoms since their positive test <input type="checkbox"/> Student and staff can participate in remote learning and teaching (if applicable) while out <input type="checkbox"/> Notify local health department and follow their procedures 	<ul style="list-style-type: none"> <input type="checkbox"/> If a person is diagnosed with COVID-19 based on a test or their symptoms, or does not get a COVID-19 test but has had symptoms, they can return to school when: <ul style="list-style-type: none"> • At least 3 days (72 hours) have passed since recovery, defined as resolution of fever without the use of fever-reducing medications • Improvement in respiratory symptoms (e.g. cough, shortness of breath) • At least 10 days have passed since first day of symptoms <input type="checkbox"/> Student and staff can participate in remote learning and teaching (if applicable) while out <input type="checkbox"/> Notify local health department and follow their procedures
Student: A designated individual (e.g. parent or guardian) is NOT PRESENT to immediately support child to get home or to medical care safely	<ul style="list-style-type: none"> <input type="checkbox"/> If appropriate for that student, they should wear a cloth/disposable face covering <input type="checkbox"/> Separate student in designated area with supervision by an adult wearing a cloth/disposable face covering standing at least 6 feet away <input type="checkbox"/> Enact plan to safely send student home as quickly as possible <input type="checkbox"/> Notify local health department and follow their procedures. Can return to school once it has been 14 days since last close contact and they do not develop symptoms <input type="checkbox"/> Can participate in remote learning while out 	<ul style="list-style-type: none"> <input type="checkbox"/> If appropriate for that student, they should wear a cloth/disposable face covering <input type="checkbox"/> Isolate student in designated area with supervision by an adult wearing a cloth/disposable face covering standing at least 6 feet away <input type="checkbox"/> Enact plan to safely send student home as quickly as possible; cannot be through school transportation <input type="checkbox"/> Return 10 days since first positive COVID-19 test, if they did not subsequently develop symptoms since their positive test <input type="checkbox"/> Can participate in remote learning while out <input type="checkbox"/> Notify local health department and follow their procedures 	<ul style="list-style-type: none"> <input type="checkbox"/> If appropriate for that student, they should wear a cloth/disposable face covering <input type="checkbox"/> Isolate student in designated area with supervision by an adult wearing a cloth/disposable face covering standing at least 6 feet away <input type="checkbox"/> Enact plan to safely send student home as quickly as possible; cannot be through school transportation <input type="checkbox"/> If a student is diagnosed with COVID-19 based on a test or their symptoms, they can return to school when: <ul style="list-style-type: none"> • At least 3 days (72 hours) have passed since recovery, defined as resolution of fever without the use of fever-reducing medications • Improvement in respiratory symptom (e.g. cough, shortness of breath) • At least 10 days have passed since first symptoms or positive test results <input type="checkbox"/> Student and staff can participate in remote learning and teaching (if applicable) while out <input type="checkbox"/> Notify local health department and follow their procedures

Refer to Symptom Screening Checklists for [Elementary School](#) and [Secondary Students/Those Entering the Building](#)

Positive Screening Protocol

DURING THE SCHOOL DAY

WHO	EXPOSURE, NO SYMPTOMS	DIAGNOSIS, NO SYMPTOMS	SYMPTOMS
	Staff or student shares they were exposed to someone with COVID-19 within the last two weeks but is NOT symptomatic	Staff or student shares they were diagnosed with COVID-19 less than 10 days ago but it is NOT symptomatic	Staff or student presents with at least one of the following COVID-19 symptoms: fever, chills, shortness of breath, difficulty breathing, new cough or loss of taste or smell
Student	<ul style="list-style-type: none"> <input type="checkbox"/> If appropriate for that student, they should wear a cloth/disposable face covering <input type="checkbox"/> Separate student in designated area with supervision by an adult wearing a cloth/disposable face covering standing at least 6 feet away <input type="checkbox"/> Enact plan to safely send student home as quickly as possible <input type="checkbox"/> Notify local health department and follow their procedures <input type="checkbox"/> Can return to school once it has been 14 days since last close contact and they do not develop symptoms <input type="checkbox"/> Participate in remote learning while out 	<ul style="list-style-type: none"> <input type="checkbox"/> If appropriate for that student, they should wear a cloth/disposable face covering <input type="checkbox"/> Isolate student in designated area with supervision by an adult wearing a cloth/disposable face covering standing at least 6 feet away <input type="checkbox"/> Enact plan to safely send student home as quickly as possible; cannot be through school transportation <input type="checkbox"/> Return 10 days after first positive COVID-19 test, if they did not subsequently develop symptoms since their positive test <input type="checkbox"/> Can participate in remote learning while out <input type="checkbox"/> Close off facility areas used by the sick person <input type="checkbox"/> Wait at least 24 hours, THEN clean and disinfect those areas with an EPA-registered product <input type="checkbox"/> Notify local health department and follow their procedures 	<ul style="list-style-type: none"> <input type="checkbox"/> If appropriate for that student, they should wear a cloth/disposable face covering <input type="checkbox"/> Isolate student in designated area with supervision by an adult wearing a cloth/disposable face covering standing at least 6 feet away <input type="checkbox"/> Enact plan to safely send student home as quickly as possible; cannot be through school transportation <input type="checkbox"/> If a student is diagnosed with COVID-19 based on a test or their symptoms, or does not get a COVID-19 test but has had symptoms, they can return to school when: <ul style="list-style-type: none"> • At least 3 days (72 hours) have passed since recovery, defined as resolution of fever without the use of fever-reducing medications • Improvement in respiratory symptoms (e.g. cough, shortness of breath) • At least 10 days have passed since first symptoms appeared. <input type="checkbox"/> Can participate in remote learning while out <input type="checkbox"/> Close off and ventilate facility areas used by the sick student <input type="checkbox"/> Wait at least 24 hours, THEN clean and disinfect those areas with an EPA-registered product <input type="checkbox"/> Notify local health department and follow their procedures
Staff Member	<p>Immediately go home</p> <ul style="list-style-type: none"> <input type="checkbox"/> Notify local health department and follow their procedures <input type="checkbox"/> Can return to school once it has been 14 days since close contact <input type="checkbox"/> Can participate in remote teaching while out, if applicable 	<p>Immediately go home</p> <ul style="list-style-type: none"> <input type="checkbox"/> Return after 10 days since first positive COVID-19 test, if they did not subsequently develop symptoms since their first positive test <input type="checkbox"/> Close off facility areas used by the sick person <input type="checkbox"/> Wait at least 24 hours, THEN clean and disinfect those areas with an EPA-registered product <input type="checkbox"/> Notify local health department and follow their procedures 	<ul style="list-style-type: none"> <input type="checkbox"/> If appropriate for that staff member, they should wear a cloth/disposable face covering <input type="checkbox"/> If well enough, immediately go home <input type="checkbox"/> If not well enough, isolate staff member in designated area and provide support to get home or to medical care <input type="checkbox"/> If a person is diagnosed with COVID-19 based on a test or their symptoms, or does not get a COVID-19 test but has had symptoms, they can return to school when: <ul style="list-style-type: none"> • At least 3 days (72 hours) have passed since recovery, defined as resolution of fever without the use of fever-reducing medications • Improvement in respiratory symptoms (e.g. cough, shortness of breath) • At least 10 days have passed since first symptoms appeared <input type="checkbox"/> Participate in remote teaching/work while out if applicable <input type="checkbox"/> Wait at least 24 hours, THEN clean and disinfect those areas with an EPA-registered product <input type="checkbox"/> Notify local health department and follow their procedures

OTHER PROCEDURES

► Recess

- Classes will go to recess with the same cohort of students and with the homeroom teacher.
- Classes of students may not mix with other classrooms of students.
- Recess equipment is sanitized every day and not shared with other classrooms.
- Teachers will wear gloves and dispense hand sanitizer before and after recess.
- Students will not use the playground other than PreK Headstart, Pre-k ESE and afterschool program cohorts, and with adherence to cleaning guidelines.

► Hallway

- Mark six feet of spacing to remind students and staff to always stay six feet apart in lines and at other times in common areas.
- Designate hallways as one-way, posting directional reminders on the walls and/or floor.
- In PreK-5, keep students and teachers in small cohort groups that stay together as much as possible during the day, and from day to day. Limit mixing between cohort groups as much as possible (*i.e. arrival and dismissal, intervention, PE, etc.*)
- Middle school and students in grades 9-10 will move students by teams or grade level. Grades 11-12 will be placed together by grade level cohorts.
- For any student needing assistance traveling within the school building, the school will develop a process for an adult to pick up the student.
- Schools will develop a process to increase supervision during transitions.
- Schools will eliminate the use of hallway lockers for the 2020-2021 school year.

► Cafeteria Procedures

- Schools will develop a cohort lunch plan while maintaining social distancing to the extent possible.

► Media Center Procedures

- Staff will have access to media center materials.
- Teachers may check out class sets.
- Media center paraprofessionals may be utilized in different roles within the school to meet the needs.

► General Guidelines

- Students will only walk one way in the hallway.
- Schools will develop staggered dismissal times by building and/or grade level to include a separate time for buses, walkers, after school program, bikers and parent pickup.
- Students will be dismissed at separate times to ensure social distancing in hallways and dismissal areas.
- Staff will walk all students to each individual bus in elementary schools. Secondary schools will monitor social distancing as students walk to buses.
- In the event of a late bus, schools will develop procedures to develop a waiting area (*outdoors preferred*) with capabilities of social distancing.
- Parent pickup process will be developed to allow for social distancing.
- Schools will develop an area that allows for social distancing.
 - For example, PreK-2 students will be outside at the parent pick up area and grade 3-5 students will be inside while students' names are being called for dismissal. Secondary will develop a waiting area(s) to ensure social distancing as possible.

► Dismissal

Parents/guardians signing out students from school:

- Parent/guardian arrives at the main office door, shows ID and states that they are here to pick up their child/children.
- Parent/guardian waits outside the door.
- Office staff checks ID and calls the student to the main office.
- Office staff enters the time, reason and parent/guardian's name into FOCUS.
- Office staff dismisses the student to the parent/guardian.

► Before/After School Care and Extracurricular Activities

- Parents park their vehicle in the parking lot and bring their student to the front door of the before care program. Temperature checks for students are taken at the door.
- CDC guidelines, including social distancing guidelines, will be followed for before and after-school care.



- Face coverings/masks will be required in the Face-to-Face model of instruction except when eating breakfast and lunch.
- Frequent hand washing and use of hand sanitizer by students and staff will occur.
- Students follow one-way traffic to classrooms for the start of school and end of school day.
- Each program will develop a cohort system and document student and staff contact for each day.
- Students remain with the same cohort and same staff, as appropriate.
- Equipment is sanitized every day.
- Locker rooms and other specialized athletic facilities will be cleaned after each use.
- Staff wear gloves and dispense hand sanitizer before and after handling equipment.
- Parents sign students out by following current health practices.
- Social distancing in the before/after care areas will be maintained, including floor markings and signage.
- Writing utensils should not be shared. However, if they are, a “used” bin should be established to gather them. At the end of the day, school personnel should use gloves and wipe down each utensil with the required cleaning supply and place back into the “new” bin.

► Drills, Emergency Evacuations

- Fire/bomb drills will be performed, using safe distances, as feasible. Students must maintain arm-length distance at assembly location and any reunification sites. Hand sanitizing may be needed.
- Active Shooter lockdown drills will be performed with discussion, demonstration and simulations instead of students closely gathering inside a classroom or other spaces.



EXCEPTIONAL STUDENT EDUCATION (ESE)/504

[CLICK TO RETURN TO TABLE OF CONTENTS](#)

► Meetings and Services

- Meetings should be held through a virtual platform unless the parent has a preference for an in-person meeting. When an in-person meeting is requested, the staffing specialist or case manager will hold the meeting with the parent staying six feet apart. All other required members will join the meeting virtually from their designated space. Teachers may need to have a space provided for them outside of their classroom.
- Services should be conducted as specified on the IEP/EP. Any questions about the provision of services should be directed to the ESE Department at (239) 337-8104.
- Accommodations should be conducted as specified on the 504 plan. Any questions about the provision of accommodations should be directed to the Postive Preventions Department at (239) 939-6858.
- Services should be provided to the student in the homeroom class (*for elementary students*) to the greatest extent possible. Opportunities for the teachers to live stream into the classroom (*to work with headphones*) should be considered.
- For instructional services in small groups pulled out of homeroom classes (*in elementary groups will be determined by the students' cohorts*), the number of students may need to be considered based on physical space and the ability to keep students six feet apart.

- For services that require physical contact, the appropriate PPE will be utilized (*face mask, gloves, gown*).
- For services that require the student to be able to see the therapist's mouth, a face shield will be utilized.

► Therapies

- Therapies should be conducted as specified on the IEP. Any questions about the provision of therapy services should be directed to the ESE Department at (239) 337-8104.
- For therapies that require physical contact, the appropriate PPE will be utilized.
- For therapies that require the student to be able to see the therapist's mouth, a face shield will be utilized.
- For therapies in small groups (*in elementary groups will be determined by the students' cohorts*), the number of students may need to be considered based on physical space and the ability to keep students six feet apart.
- Therapy should be provided to the student in the homeroom class (*for elementary students*) to the greatest extent possible. Opportunities for the therapist to live stream into the classroom (*to work with headphones*) should be considered.
- Contracted therapists will continue to provide services as indicated in the IEP following the same recommendations as district personnel. Note: See sign-in procedures for non-district personnel.



- Non-district personnel (*not including contracted personnel*) who provide individualized support to students should be considered on a case-by-case basis by the ESE zone coordinator in collaboration with school administration.
- These services may need to be delayed or reduced until a time when it is safe for non-district personnel to be in the school setting. For behavioral services, special consideration should be given to situations where the therapist has been working in the home during school building closure or worked with the student the previous school year.
- There should be one therapist that works with a student (*no rotation of therapists*). If a person beyond the one therapist requests to come to the school, that request must be reviewed by the ESE zone coordinator in collaboration with school administration.

► **Psychological Evaluations**

- For evaluations that require in-person contact in close proximity (*less than six feet*), the appropriate PPE will be utilized (*face shield, mask*).
- Evaluations will be provided in a dedicated quiet area per standardized procedures in a 1:1 format unless the evaluation can validly be administered via telehealth or online.
- Materials that are used for 1:1 administration (*ex. shared manipulatives*) will be sanitized immediately following the evaluation administration.
- For evaluations that require the student to be able to see the evaluator's mouth, a face shield will be utilized.
- Classroom observations will be conducted in a live-streaming format (*when appropriate*).



COPING AND RESILIENCE

[CLICK TO RETURN TO TABLE OF CONTENTS](#)

The outbreak of COVID-19 can be stressful for many. Fear and anxiety about a disease can be overwhelming and cause strong emotions in adults and children. Schools can play an important role in helping students and staff cope and build resilience to support the well-being of the school community.

Schools are required to provide staff, families and students (*if age-appropriate*) information on how to access resources for mental health and wellness.

► Best practices:

- Encourage staff, students and families to talk with people they trust about their concerns about COVID-19 and how they are feeling.
- Designate a single staff member to be the COVID-19 point of contact for the school in collaboration with district school nurses. Ensure that staff, students and families know how to contact that individual. If students are old enough, consider a student counterpart for this role to be a source of information for students, thereby supporting student ownership and responsibility for creating a safe and healthy campus.
- Conduct ongoing regular training among all staff on updated health and safety protocols.
- Partner with other institutions in the community to promote communication and cooperation in responding to COVID-19.



CHROMEBOOKS AND STUDENT SAFETY

[CLICK TO RETURN TO TABLE OF CONTENTS](#)

The School District of Lee County has agreements in place with our third party vendors including Google, Safari Montage and our curriculum providers to ensure that they are all in compliance with [CIPPA](#) and [COPPA](#) laws. These laws focus on protecting students from accessing inappropriate content and keeping personal student information private. One area of particular interest to the District is in ensuring external parties to the District are unable to communicate with our students using any type of messaging apps or by accessing webcams and microphones on District-managed student devices.

The District makes every effort to ensure students are only able to communicate with their teachers and peers by putting controls and policies in place such as requiring students to use their District Accounts logged into their District-assigned Chromebooks. These devices have protections and policies enabled to force students to use their District account to log on to the device. All communication to and from their Chromebooks go through our web filters to guide students to approved content.

The District makes every effort to ensure students use these devices appropriately. It is the expectation of the District that children are under the supervision of an adult monitoring their behavior while children are accessing online resources, just as if they were in the classroom at school.

The School District of Lee County has partnered with Common Sense Media to provide high-quality Internet safety training for both students and parents. Families may use the resources below to gain a better understanding of these technologies and how to better protect their children.

- [Parent Guide to Privacy & Internet Safety](#)
- [Parent Guide to Cyberbullying](#)
- [Parent Guide to Social Media](#)
- [Common Sense Media Home Page](#)



COMMUNICATIONS PLAN

[CLICK TO RETURN TO TABLE OF CONTENTS](#)

GOAL

Plan and disseminate regularly scheduled communication with all stakeholders to build confidence that families, students and educators are prepared for the reopening of our schools.

To accomplish this goal, we will ensure:

- That COVID-19 related information is presented from reliable sources such as the Centers for Disease Control and the Florida Department of Health, and encourage families/staff to do the same.
- Staff is implementing all possible precautions to mitigate.
- All stakeholders understand that the opening of schools comes with a risk of exposure.

Schools are required to disseminate COVID-19 information and combat misinformation through multiple channels to staff, students and families. Ensure that families are able to access communication channels to appropriate staff at the school with questions and concerns.

Parent Guidance

To support families, The School District of Lee County will create a parent guide to assist them in:

> **Evaluating Risks:**

Based on your family's circumstances and needs, determine if you'd like to send your child(ren) to the physical schoolhouse or participate in distance learning.

> **Selecting Your Schooling Preference:**

Between July 13 and 30, choose your preferred instructional model for the fall by registering your selection [here](#).

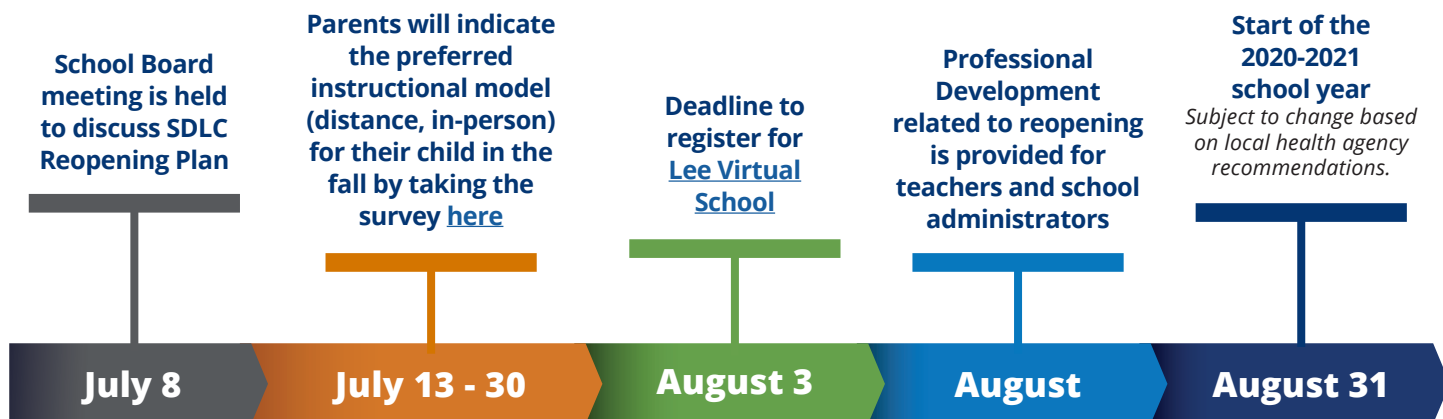
> **Preparing for Opening of Schools:**

Ensure you and your child are ready for a return to a physical and/or distance learning setting in terms of materials, and stay updated on new procedures.

> **Remaining Engaged:**

Learn what tools/applications your school will use to communicate with you and your child(ren) during the year and check them frequently for new information and best practices.

July-August **Next Steps**





SAFE REOPENING PLAN

Interim guidance as of July 23, 2020



2855 Colonial Boulevard
Fort Myers, FL 33966
Phone: 239.334.1102
www.leeschools.net

