

AMSTEL SQUARE

Building a better Newark one block at a time

For Leasing Info:

Tim Thompson

amstelsquare@comcast.net

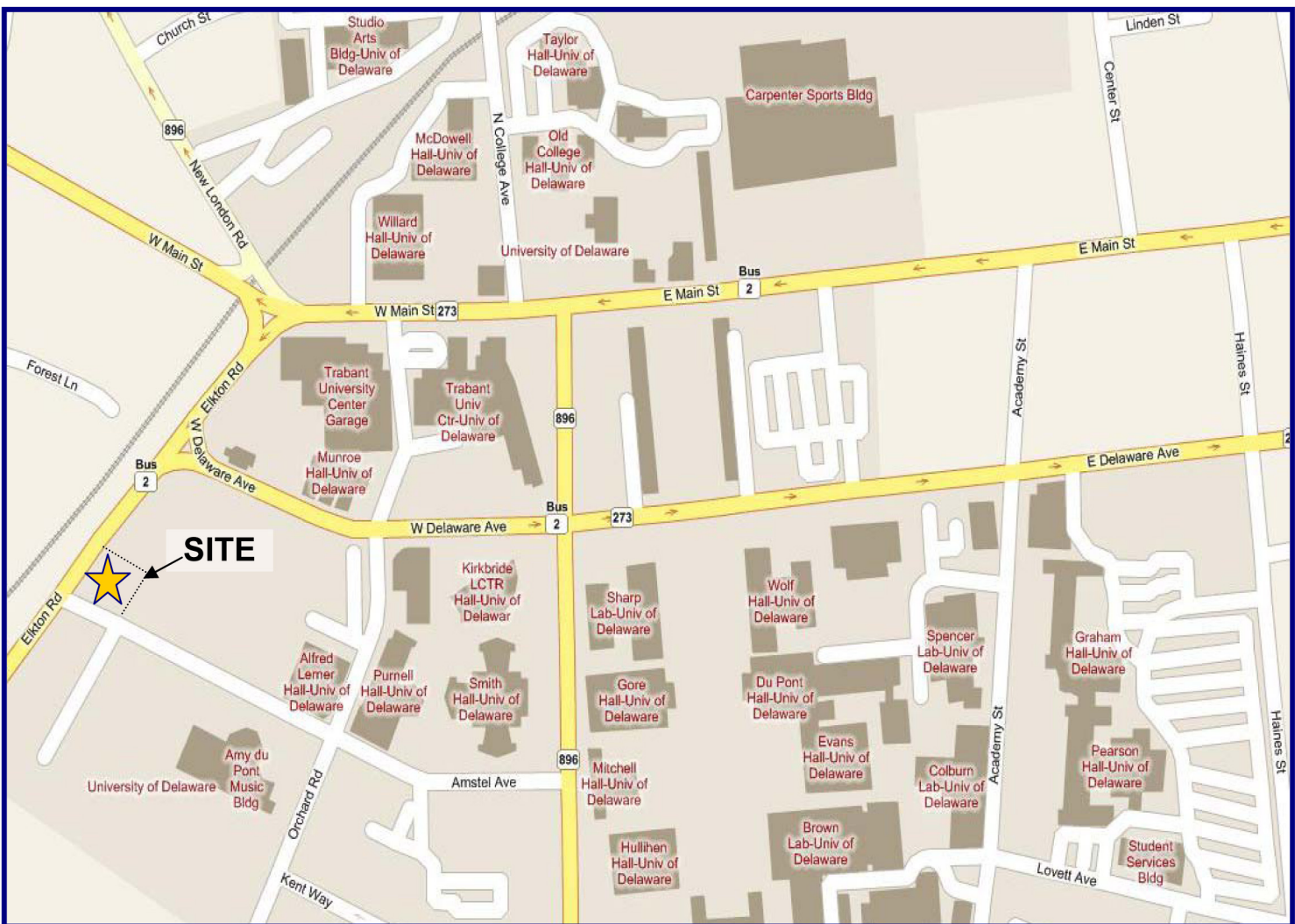
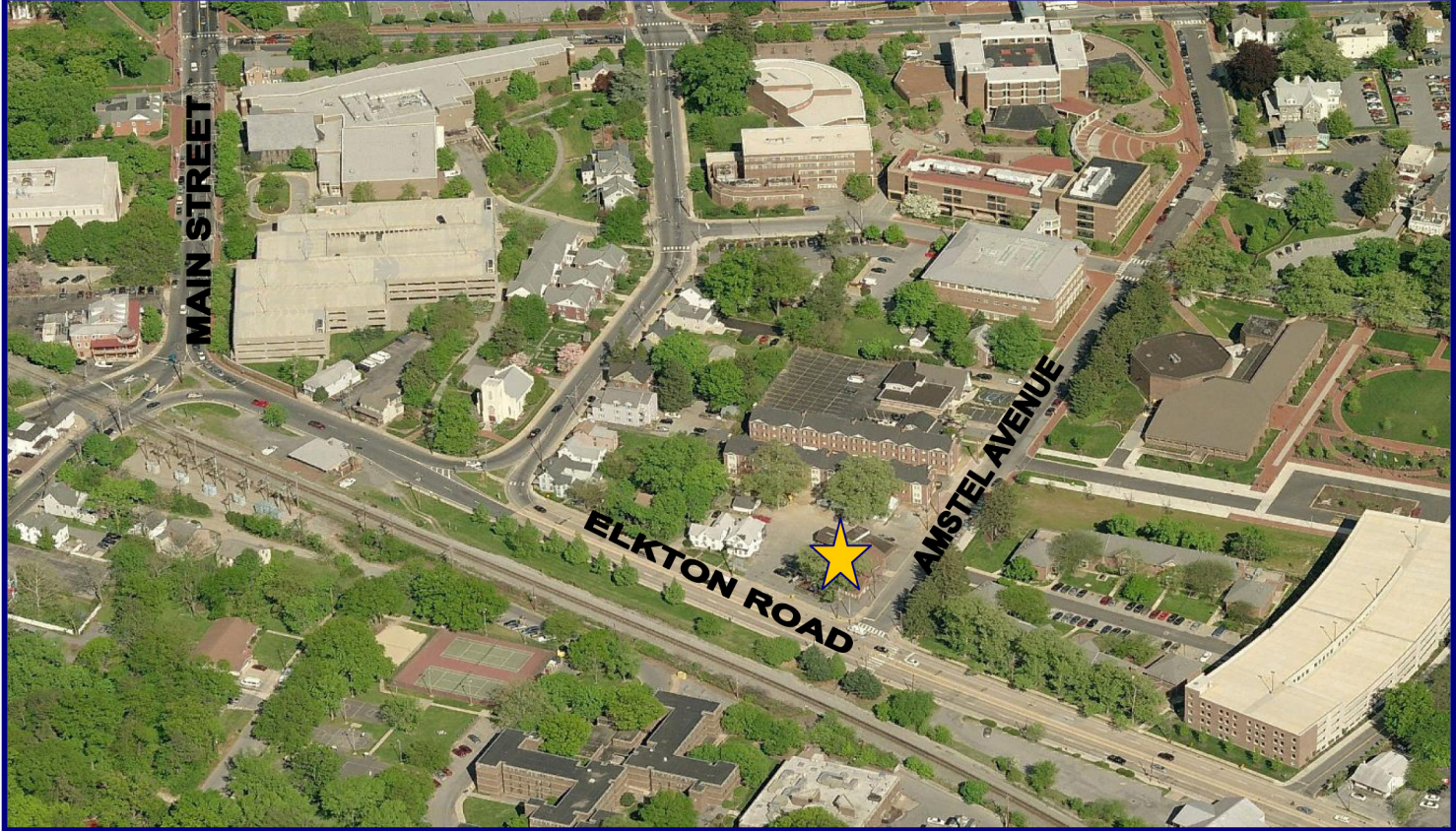


10,000 SF of Prime Office/Commercial Space Available

Located at the corner of Amstel Avenue and Elkton Road in Newark, DE, Amstel Square is in the heart of the University of Delaware campus and Newark residential community. It offers a unique opportunity for your business in a highly visible location!

- **10,000 SF of very desirable space on the corner of Amstel Avenue and Elkton Road in Newark, DE for multiple and varied Office/Commercial uses.**
- **Amstel Square will offer high visibility from Elkton Road, a major commuter artery to and from Maryland and Pennsylvania bedroom communities to Wilmington and I-95 locations.**
- **Situated in visible location in an area densely populated with both townhouses and dormitories creating one of the most heavily traveled pedestrian arteries in Newark.**
- **In close proximity to all UD facilities and directly across Amstel Avenue from the Music Building and the new \$42 million performing Arts Center where over 100 performances occur annually.**
- **Unlike Main Street, Amstel Square has ample off-street parking, is adjacent to a 720 car parking garage and offers easy two-way accessibility for motorists from both Amstel Avenue and Elkton Road.**

www.amstelsquare.com



Newark, DE