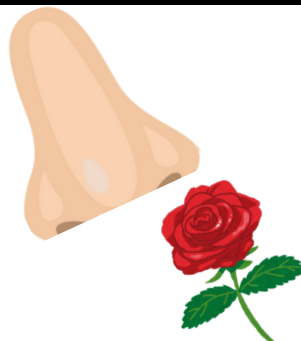
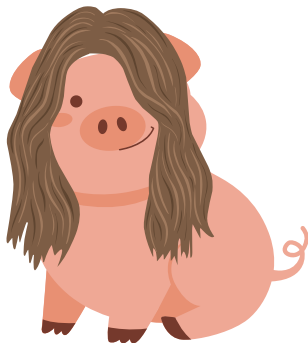


Rhyme Riddles

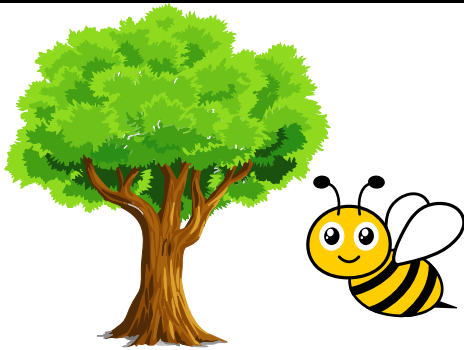
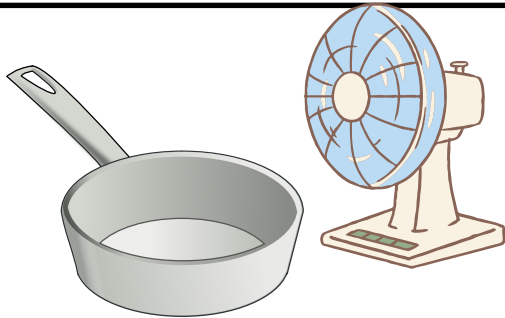
Can you find the rhyming words in these pictures?



Answers: red bed, sheep jeep, cat bat, frog log, pig wig, frown clown, house mouse, nose rose.

Rhyme Riddles

Can you find the rhyming words in these pictures?



Answers: pan fan, door four, tree bee, glove love, chair bear, star car, call ball, lake rake.