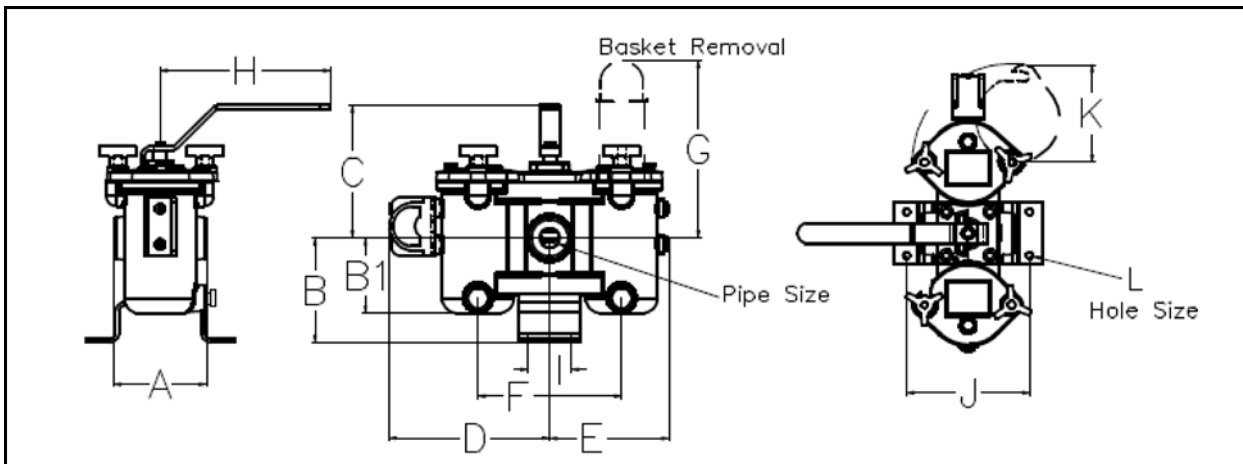




## *Duplex Strainers 1" - 1½" - 2"*



## DIMENSIONS (mm)



Connections supplied with NPT Female standard, can be supplied Male BSP adaptor.

| Pipe Size | A   | B   | C   | D   | E   | F   | G   | H    | J   | Weight Kg |
|-----------|-----|-----|-----|-----|-----|-----|-----|------|-----|-----------|
| 1"        | 114 | 95  | 165 | 305 | 190 | 210 | 222 | 1/2" | 14  | 16.5      |
| 1 1/2"    | 152 | 127 | 184 | 311 | 203 | 210 | 298 | 1/2" | 124 | 19        |
| 2"        | 178 | 203 | 222 | 476 | 280 | 210 | 343 | 1/2" | 178 | 50        |

## CONSTRUCTION:

### PARTS

### MATERIAL

Body

Cast Iron

Sleeve

Bronze

Inner Valves

Bronze

Internals

Stainless steel

Baskets

Stainless steel 60 mesh standard (30,40,80 available to order)

Drain Plugs

Brass

O Rings

Nitrile

Maximum working pressure

14 bar at 65 degrees centigrade

**SIMPLEX FILTERS** – also available to order.

