



MK

MODERN
KITCHENWARE

ABOUT US

Modern Kitchenware operates under the umbrella of a U.S. consumer goods group with up to 35 years of wholesale and retail distribution experience. While Modern Kitchenware is newly focused on small kitchen appliances, we leverage the group's established buyer relationships, nationwide logistics, and compliance and packaging capabilities to execute quickly at scale.

We are also proud to hold the official license for COBY, a long-standing and well-known international brand trusted by millions of consumers. This license strengthens our market presence and allows us to launch products under both our own brand and COBY, giving us strong recognition with retailers and customers alike.

Our Strengths:

- Long-term partnerships with leading U.S. retailers and distributors
- Licensed partner for the COBY brand
- Reliable, large-volume repeat orders
- Premium packaging and branding for the U.S. market
- Proven ability to launch new products quickly and effectively

Modern Kitchenware values strong, long term partnerships with retailers who care about quality, fresh design, and reliable supply.

COBY[®]

BE INSPIRED



Introduction

Founded in 1991, COBY has had a history of creating innovative products that give consumers premium features at an affordable price. Built on this foundation, the COBY brand vision look and feel has been re-imagined for today's consumer who is seeking electronics, home products and accessories that offer style, quality and value.

Technology driven with modern style, COBY products and accessories are dependable and easy to use while providing real value at home or on the go. Be original, be timeless, be inspired with COBY.



Coby 2 Slice Wide Slot Toaster



C-2T-01- NAVY
C-2T-02-GREEN



- Extra-wide slots to fit thick breads or two bagel halves
- Six browning levels for precise, consistent results
- Defrost and Reheat functions for added everyday versatility
- Drop-down crumb tray for quick, effortless cleanup



Coby 2 Slice Digital Toaster Extra Wide Slots

C-2T-03



- Reheat, Defrost & Cancel modes for effortless control
- White LED status light for clear, at-a-glance indication
- Extra-wide 1.5 in slots (1.5 in × 5.5 in) for thick slices and bagels
- Sleek stainless steel housing with a premium finish
- Modern touch panel with 6 precision browning levels
- Countdown timer display for real-time toasting progress
- Automatic shut-off and high-lift pop-up for added safety and ease
- Removable crumb tray and integrated cord storage for a cleaner counter

COBY 2 Slice Wide Slots Toaster

C-2T-04GRN

C-2T-05BLU

C-2T-06BLK

C-2T-07CRM



- Extra-Lift Lever for easy and safe removal of smaller slices
- Self-Centering Slots ensure even toasting on both sides
- Defrost, Bagel & Cancel Functions with red LED indicator
- 6-Level Browning Control for perfect toast every time

COBY 2 Slice Toaster

C-2T-08GRN
C-2T-09BLU
C-2T-010BLK



- Cool-touch exterior for safe handling
- 2-slice capacity ideal for everyday use
- 6 browning settings for light to dark toasting
- Electronic browning control for precise results
- Slide-out crumb tray for quick and easy cleaning

C-HM-01-GREEN
C-HM-02-GREEN
C-HM-03-BLACK

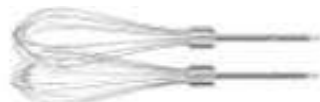
Coby 5 Speed Compact Electric Hand Mixer



- 5-speed control for precise mixing and better texture
- One-touch eject button for quick, mess-free release
- Includes beaters, dough hooks, and whisk for everyday versatility
- 150W motor for consistent, reliable performance

Coby 5 Speed Electric Hand Mixer

C-HM-04-NAVY
C-HM-05-GREEN
C-HM-06-BLACK



- 5-speed control for precise mixing and better texture
- One-touch eject button for quick, mess-free release
- Includes beaters, dough hooks, and whisk for everyday versatility
- 150W motor for consistent, reliable performance

COBY 5 Speed Hand Mixer with Turbo Boost



C-HM-07-White

- 150W motor delivers reliable everyday mixing power
- 5 speed settings plus Turbo Boost for added control when mixing a variety of ingredients
- Designed for more thorough mixing and strong performance on batters, doughs, and everyday recipes
- Eject button allows easy release of beaters and dough hooks
- Lightweight design with a sleek finish

Coby Electric Coffee & Spice Grinder



C-CPG-01



- Stainless steel blade and grinding cup for efficient, even results
- Clear lid for easy monitoring while you grind
- Safety lock system for secure operation
- Pulse mode for controlled, custom grinding
- Ideal for coffee beans and dry spices
- Quilted, leather-grain aesthetics for an elevated, premium look

Coby One Touch Rechargeable Can Opener



C-RCO-01-BLU
C-RCO-02-GRN
C-RCO-03-BLK
C-RCO-04-CRM

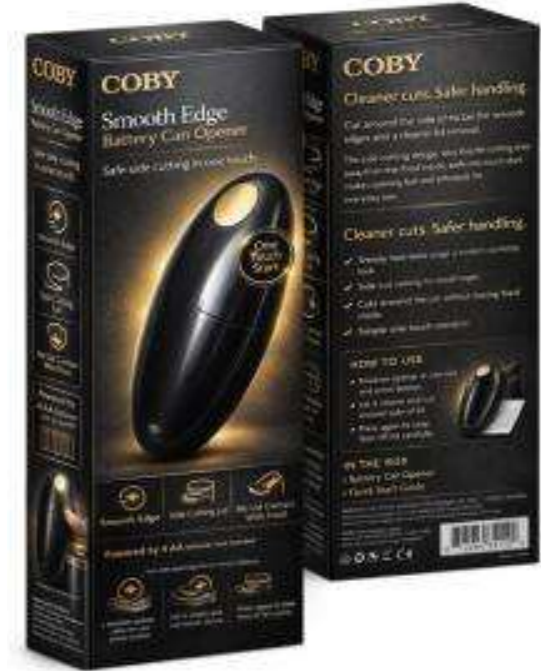


- Trendy appearance with 2-color scheme
- It cuts cleanly around the side of cans leaving smooth edges.
- Rechargeable lithium battery with TYPE-C port
- The blade cuts along the side of the lid without touching the food inside

Coby Battery Operated Can Opener



C-AACO-01BLK
C-AACO-02BLU
C-AACO-03CRM
C-AACO-04GRN



Trendy appearance with 2-color scheme
It cuts cleanly around the side of cans leaving smooth edges.

Powered by 4 AA batteries (not included)
The blade cuts along the side of the lid without touching the food inside

Coby Battery Operated Can Opener



C-AACO-05WHT

- Trendy appearance with 2-color scheme
- It cuts cleanly around the side of cans leaving smooth edges.
- Powered by 4 AA batteries (not included)
- The blade cuts along the side of the lid without touching the food inside

Coby Electric Hot Pot Multi Cooker 1.5L



C-MC-01-WHT
C-MC-02-BLK

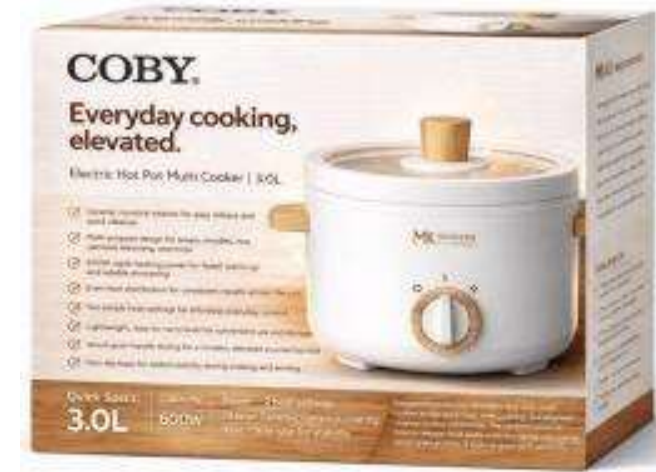


- Ceramic nonstick coating for easy release and quick cleanup
- Multi-purpose design for everyday cooking versatility
- Lightweight build for easy handling and portability
- Modern styling with a wood-grain handle for an elevated look
- 600W rapid-heating performance for faster warm-up
- Even heat distribution for more consistent results
- Two simple heat settings for effortless control
- Non-slip base for added stability on the counter

Coby Electric Hot Pot Multi Cooker 3.0L



C-MC-03-WHT
C-MC-04-BLK



- Ceramic nonstick coating for easy release and quick cleanup
- Multi-purpose design for everyday cooking versatility
- Lightweight build for easy handling and portability
- Modern styling with a wood-grain handle for an elevated look
- 600W rapid-heating performance for faster warm-up
- Even heat distribution for more consistent results
- Two simple heat settings for effortless control
- Non-slip base for added stability on the counter

Coby Salt & Pepper Rechargeable Ceramic Grinder Set

C-SPG-01



- Salt & Pepper 2 grinder set
- Soft touch surface
- Grinding with a simple press
- Level Visibility
- LED light turns on automatically when the grinder is in operation
- Easily adjust the grinder to choose the coarseness
- Ceramic grinder for excellent consistency
- Rechargeable lithium battery with TYPE-C port
- Red when charging, White when fully charged



Coby 2 Cup Electric Vegetable Chopper & Mini Food Processor

C-MFP-01



- Powerful 300W performance for fast, efficient chopping and mincing
- Quiet low noise AC motor for smooth, reliable everyday use
- Dual speed pulse control gives you quick bursts or finer results on demand
- Sharp stainless steel blades slice through fruits, vegetables, herbs, and hard cheese with ease
- 2 Cup clear bowl capacity is ideal for small batches, sauces, and prep work
- Premium stainless steel decorative panel for a modern, countertop ready look
- Easy detach design makes cleanup quick and simple

COBY 1.5-Cup Electric Food Chopper

C-MC-02



Efficient 100W DC 5512 motor for quick everyday prep
1.5 cup bowl is ideal for small batches, sauces, and meal prep
Chops, minces, and dices in seconds to save time in the kitchen
One touch pulse control for better texture control and fewer over processed results
Fast 2500 to 4000 RPM speed range for consistent chopping performance
Durable stainless steel blade stays sharp for reliable cutting power
Built in oil hole on the lid lets you add oil or sauce while processing for smoother mixing and dressings
Easy to clean design for quick rinse and hassle free cleanup

COBY 1.5-Cup Electric Food Chopper



C-MC-01

- Powerful 100W DC Motor for fast, consistent chopping
- Chops, minces, and dices in seconds to speed up meal prep
- 1.5 cup bowl size ideal for quick batches and everyday use
- Simple pulse control button for better texture control and precision
- Easy to clean design so cleanup is quick and hassle free

Coby Immersion Blender



C-IM-01

- 500 Watts For Reliable, Powerful Performance
- High Efficiency Motor Delivers Strong And Consistent Processing
- Variable speed control for precision from gentle mixing to high-power prep
- Non-slip silicone pad keeps the unit steady and secure on the counter.
- Built In Safety System With Overheating Protection

Coby Immersion Blender



C-IM-02



- 500 Watts For Reliable, Powerful Performance
- High Efficiency Motor Delivers Strong And Consistent Processing
- Variable speed control for precision from gentle mixing to high-power prep
- Non-slip silicone pad keeps the unit steady and secure on the counter.
- Built In Safety System With Overheating Protection

Coby Rechargeable Immersion Blender



C-IM-03



- Powerful 150 watt DC motor for efficient performance
- 7.4 V 2000 mAh lithium ion battery for long lasting use
- Quiet operation at around 60 dBA for a more comfortable experience
- Ergonomically optimized handle for a secure and comfortable grip
- Simple single button control with 5 selectable speed settings
- Light display on top shows 5 speed levels and 4 battery levels at a glance
- Convenient Type C charging cable for easy recharging
- Charging time about 3 to 3.5 hours
- Durable ABS and stainless steel decorative housing for a premium look
- Injected body with rubber oil finish for a smooth, non slip feel

Coby Immersion Blender 4 in 1 Set

C-IMK-01



- 500 Watts for reliable, powerful performance
- High efficiency motor delivers strong and consistent processing
- Multi function use for chopping, shredding, slicing and egg whisking
- Variable speed control for precise results with different ingredients
- Non slip silicone pad for stable and secure operation on the countertop
- Built in safety system with overheating protection

- Whisk
- 600ml Chopping Bowl
- 800ml Beaker



Coby Immersion Blender 5 in 1 Set

C-IMK-02



- 500 Watts for reliable, powerful performance
- High efficiency motor delivers strong and consistent processing
- Multi function use for chopping, shredding, slicing and egg whisking
- Variable speed control for precise results with different ingredients
- Non slip silicone pad for stable and secure operation on the countertop
- Built in safety system with overheating protection
- Whisk
- Slicer & Shredder
- 1500ml Food Processor
- 800ml Beaker

Coby 500-Watt Stainless Steel Immersion Blender 5 in 1

C-IMK-03-GRN

- 500ML chopper
- Whisk
- 600ML Beaker
- Frother



- Powerful DC motor for strong performance with low noise operation
- Two speed soft touch switch with variable speed control
- Stylish modern look with elegant design that complements any kitchen
- Slim ergonomic body for comfortable, secure handling
- Durable plastic injection main housing for long lasting reliability
- Detachable stainless steel blending stick with sharp stainless steel blade for efficient blending and easy cleaning

Coby 400-Watt Stainless Steel Immersion Blender 7 in 1 Set



C-IMK-04

- Turbo Button
- Speed Variable
- 500ML Chopper
- 600ML Beaker
- Whisk
- Mixer
- Frother
- Bottle brush
- Blend & Go Bottle with Chill Stick
- 400W stainless steel immersion blender delivers fast, smooth blending for soups, sauces, and smoothies
- Variable speed control plus Turbo boost gives you quick power on demand for tougher ingredients
- True 7 in 1 kitchen system: blend, chop, whisk, mix, froth, Clean, and take drinks to go
- 2 Cup chopper handles herbs, onions, nuts, and quick prep in seconds
- 2.5 Cup beaker is perfect for blending and measuring right in the same cup
- Whisk and mixer attachments make light work of batters, eggs, whipped mixes, and more
- Blend and Go bottle includes a Chill Stick to keep drinks colder longer on the move
- Bottle brush included for easy cleaning and everyday convenience



Coby 500-Watt Stainless Steel Immersion Blender 5 in 1

C-IMK-05

- 500ML chopper
- Whisk
- 600ML Beaker
- Frother

- Powerful DC motor for strong performance with low noise operation
- Two speed soft touch switch with variable speed control
- Stylish modern look with elegant design that complements any kitchen
- Slim ergonomic body for comfortable, secure handling
- Durable plastic injection main housing for long lasting reliability
- Detachable stainless steel blending stick with sharp stainless steel blade for efficient blending and easy cleaning



COBY Speed Variable Immersion Hand Blender Set 4 in 1

C-IMK-06



1000W high power performance for fast blending & tougher ingredients

Powerful, energy saving DC motor delivers strong, consistent results

Variable speed control lets you fine tune texture from gentle to turbo

Lock button design for safer, more controlled operation

Durable stainless steel blade for efficient cutting & smooth purees

Quick detach attachments make cleanup fast & simple

Includes 700 ml beaker, stainless steel whisk, and 500 ml chopper for a complete set

COBY 600W Immersion Hand Blender Set 4 in 1



C-IMK-07

- Mix, blend, puree, and create smoothies, dips, and soups with ease
- Powerful 600W motor delivers strong and consistent blending performance
- Two speed control lets you choose the perfect texture for every recipe
- Ergonomic handle design provides a comfortable and secure grip
- Detachable stainless steel blending wand for convenient use and storage
- Dishwasher safe parts make cleanup quick and effortless
- Easy-clean design for hassle-free everyday use

COBY Speed Variable Immersion Hand Blender Set 4 in 1

C-IMK-08



- Variable speed control knob allows precise blending power for different recipes
- Dedicated on/off and turbo buttons for quick control and extra power when needed
- High-efficiency pure copper DC motor delivers powerful performance with ultra-quiet operation
- Durable stainless steel ice-crushing blade for smooth and consistent blending
- Elegant patented design for a modern, premium kitchen look
- Lightweight and durable ABS housing built for everyday use

COBY Immersion Hand Blender Set 4 in 1

C-IMK-09



- Mix, blend, puree, and create smoothies, dips, and soups with ease
- Powerful 300W motor delivers strong and consistent blending performance
- Two speed control lets you choose the perfect texture for every recipe
- Ergonomic handle design provides a comfortable and secure grip
- Detachable stainless steel blending wand for convenient use and storage
- Dishwasher safe parts make cleanup quick and effortless
- Easy-clean design for hassle-free everyday use

COBY Immersion Hand Blender Set 4 in 1

C-IMK-10-BLK



- 300W power with an energy saving copper motor for strong, consistent performance
- Two speed control lets you switch from gentle mixing to faster processing
- Durable stainless steel blade for smooth blending and efficient chopping
- Quick release attachments detach easily for faster cleanup
- Includes 2 cup chopper for herbs, onions, and small batch prep, 24 oz measuring cup for blending, mixing, and serving, stainless steel whisk for whipping cream, eggs, and batters

Coby Personal Nutri Blender

C-NBB-01-BLK
C-NBB-02-GRN
C-NBB-03-BL



- Includes 2 jars and 2 Sip-N-Go lids for grab-and-go convenience
- 600 ml BPA-free blending jar for everyday smoothies and shakes
- Four stainless steel Ice Sabre blades for faster, finer blending
- One-touch start for effortless, intuitive operation
- 250W motor for smooth, reliable performance
- Detachable design for easy cleaning of the blades and jar

Coby 500W Personal Nutri Blender

C-NBB-04

- Powerful 500W motor for fast blending, smoothies, and everyday prep
- Pulse switch gives quick bursts of power for better control and texture
- Includes two 28 oz cups with engraved measurement marks for easy portioning
- Two to-go lids let you blend and drink from the same cup, no extra dishes
- Stainless steel ice-crushing blades handle frozen fruit and ice with ease
- Compact design for easy storage and grab-and-go convenience
- Easy-clean base and jars make cleanup quick and simple



Coby 300W Speed Variable Personal Nutri Blender

C-NBB-05



- Powerful 300W motor for reliable performance
- 2 speeds plus pulse for total control from smoothies to ice crushing
- Two 25oz jars designed for blending and everyday portability convenience
- Durable stainless steel blades that power through ice and frozen fruit
- Compact countertop design with simple rotary control
- Quick cleanup with removable lids and easy-wash components



COBY Professional 1400W High-Speed Blender with Smart Programs & 60oz Jar

GTBK-K03

- Powerful 1400W Motor – High-performance blending up to 30,000 RPM easily crushes ice, nuts, and frozen ingredients.
- Large 1.8L Capacity Jar – Durable transparent jar with easy-pour design, ideal for smoothies, sauces, and frozen drinks.
- 6 Preset Programs – Ice Crush, Blend, Smoothie, Puree, Mix, and Stir for convenient one-touch operation.
- Touch Control + Rotary Dial – Modern control panel with touch buttons for power, speed, and pulse, plus rotary knob for menu selection.

COBY 2-in-1 Food Processor

C-FP-01

- High power performance with 1500W motor for fast chopping, slicing, and shredding plus 800W blender function
- Large 2.5L processing bowl for family size prep, meal prep, and entertaining
- Preset programs and built in timer for one touch convenience
- Easy to use digital control panel with clear timer display
- Stainless steel chopping blade for quick, even results
- Three stainless steel discs for shredding, slicing, and French fry cuts
- Plastic kneading blade for mixing and light dough prep
- Non slip rubber feet help keep the unit stable while running



COBY 1000W Electric Glass Kettle



MEK-168-MK

Cordless kettle with 360° swivel base for effortless lifting and pouring
Borosilicate glass body for a clean, premium look and lasting durability
LED indicator lights for clear, at-a-glance status
Automatic shut-off for safer everyday use
Boil-dry and overheat protection for added peace of mind
1000W rapid-boil technology

Coby Electric Glass Kettle 1.7L

C-GK-01



- Cordless kettle with 360° swivel base for effortless lifting and pouring
- Borosilicate glass body for a clean, premium look and lasting durability
- LED indicator lights for clear, at-a-glance status
- Automatic shut-off for safer everyday use
- Boil-dry and overheat protection for added peace of mind
- 1500W rapid-boil technology

COBY 1.7L Cool Touch Digital Temperature Control Electric Kettle



C-GK-02

- Generous 1.7L capacity
- Cool touch double wall
- Premium glass and stainless steel build
- 360° cordless rotary
- Large, colorful touch screen
- Four one touch presets for everyday favorites
 - 40°C milk
 - 70°C honey
 - 80°C green tea
 - 90°C coffee
- Precision temperature control for
- Automatic lid opening with wide mouth
- Keep warm for 2 hours with memory

COBY 1.7L Stainless Steel Cool Touch Electric Kettle



C-SSK-01

- 1.7L capacity
- 360° cordless base for easy lift and pour
- Sleek streamlined design that looks great on any counter
- Concealed stainless steel heater for fast boiling and easy cleaning
- Boil dry protection for added safety
- Auto shut off when water reaches a boil
- Removable washable filter for cleaner pours
- One touch lid opening for quick refills
- LED illumination shows when it's heating

COBY 1.7L Rapid Boil Electric Kettle



C-PK-01-GRN
C-PK-02-BLU

- Cordless kettle with 360° swivel base for effortless lifting and pouring
- Removable filter for easy cleaning
- Strix controller for reliable performance
- LED indicator lights for clear, at-a-glance status
- Automatic shut-off for safer everyday use
- Boil-dry and overheat protection for added peace of mind
- 1500W rapid-boil technology



Coby Portable Espresso Machine

- C-ES-01GRN
- C-ES-02BLU
- C-ES-03BLK
- C-ES-04CRM



- Compatible with both Ground Coffee & Capsule
- Soft touch surface
- Stainless steel water tank
- IPX5 Waterproof
- Rechargeable lithium battery with TYPE-C port
- Can extract more than 60 cups of espresso on a single charge
- Pack & Go storage bag Included

Coby 12 Cup Programmable Drip Coffee Maker



C-CM-01



- Programmable timer with LCD display for easy morning scheduling
- Non-drip valve for a cleaner, spill-free pour
- Removable filter holder for quick, simple cleanup
- Includes reusable coffee filter for everyday convenience
- Integrated water level window for accurate filling
- Keep-warm plate maintains serving temperature longer
- Heat-resistant glass carafe built for hot, fresh brewing
- 1000W brewing power for fast, consistent performance

Coby 12 Cup Drip Coffee Maker



C-CM-02



- Makes 12 Cups/54oz of Coffee
- Includes a Reuseable Filter and Coffee Scoop
- Non-Stick Warming Plate
- Space Saving, Compact Design
- Lighted On/Off Switch
- Easy View Water Window

COBY Grind and Brew 12 Cup Programable Coffee Maker



C-CM-03

- ERP2 compliant, with auto shut off
- Grind time about 30 seconds for standard grind, about 35 seconds for finer grind
- Brew time about 12 to 13 minutes
- Keep warm function with auto shut off
- Grinds whole beans or brews pre ground coffee directly
- Lift up filter basket for easy filling and cleaning
- Anti slip feet for stability
- Programmable delay brew function 24 hour clock function
- Electronic controls with backlit LCD display

COBY 12 Cup Smart Programmable Coffee Maker

C-CM-04

- 12 cup capacity for family size brewing and entertaining
- LCD touch screen for quick, modern, easy control
- WiFi connectivity for convenient smart control and scheduling
- 24 hour programmable timer so coffee is ready when you are
- Anti drip design to keep counters clean and reduce mess
- Overheat protection for safer everyday use and longer life
- Removable, washable permanent mesh filter to save on paper filters
- Non stick warming plate to keep coffee hot without burning
- Water level gauge for accurate filling and consistent results
- Heat resistant glass carafe built for daily serving and durability





COBY 10 Cup Programmable Coffee Maker

C-CM-05

- 10 cup family size capacity
- Anti drip pause and pour so you can grab a cup mid brew without spills
- Removable filter basket for quick loading and easy cleaning
- Illuminated on off switch so it is easy to see when it is running
- Clear water level gauge for accurate filling
- Removable washable filter for reusable convenience
- Keep warm function to hold serving temperature after brewing
- Non stick warming plate for easy wipe clean maintenance
- Auto shut off timer turns the unit off 2 hours after start for safety
- 24 hour programmable preset so coffee is ready when you wake up
- Heat resistant glass carafe built for everyday pouring
- 230V 50Hz 800W power for reliable brewing performance



COBY 12 Cup Programmable Coffee Maker

C-CM-06

- 800W power for fast everyday boiling
- 12 capacity, ideal for tea, coffee, and instant meals
- Anti drip pour spout for cleaner, spill resistant serving
- LCD touch screen for simple, modern control
- 24 hour programmable preset so hot water is ready when you need it
- Auto shut off after 2 hours from start for added safety and peace of mind
- Removable washable nylon filter for cleaner tasting water and easy maintenance
- Boil dry protection helps prevent damage if the kettle is accidentally turned on without water
- Overheat protection for safer, longer lasting performance
- Translucent water tank with clear level marks for quick, accurate filling
- Keep warm function to hold temperature between refills



COBY 12 Cup Programmable Coffee Maker

C-CM-07

- 12 cup capacity for family breakfasts and entertaining
- Anti drip pause and pour lets you grab a cup while it brews without mess
- Removable filter basket for quick filling and easy cleanup
- Illuminated on off switch so you can see at a glance when it is on
- Easy read water level gauge for accurate measuring
- Removable washable filter for reusable convenience plus a keep warm function
- Non stick keep warm plate wipes clean fast and helps prevent buildup
- Auto shut off timer turns the unit off 2 hours after start for added safety
- 24 hour programmable preset so coffee is ready right when you want it
- Heat resistant glass carafe designed for safe, everyday pouring
- 230V 50Hz 800W brewing power for reliable performance

Modern Kitchenware Battery Operated Milk Frother

C-MF-01-W



- Battery operated for cordless convenience
- Stainless steel construction
- Compact and easy to store
- Great for milk, creamer, matcha, hot chocolate, and light mixing
- Requires 3 x AAA batteries (Not Included)

COBY Rechargeable Milk Frother with Whisk



JS-GZ-005

- 3-speed control for light, medium, or high-speed mixing
- Sleek black and gold finish adds a modern, premium look to any kitchen
- Includes interchangeable whisk attachments for frothing, whisking, and everyday mixing
- Rechargeable design with convenient USB-C charging
- Built-in 400mAh battery for cordless everyday use



COBY Rechargeable Milk Frother

JS-GZ-006

- 3-speed control for light, medium, or high-speed mixing
- Sleek black and gold finish adds a modern, premium look to any kitchen
- Rechargeable design with convenient USB-C charging
- Built-in 400mAh battery for cordless everyday use

COBY Battery Operated Milk Frother



JS-GZ-007

- Creates rich, creamy foam in seconds for coffee, lattes, cappuccinos, & more.
- Battery-operated design delivers cordless convenience for quick everyday use.
- Comfortable handheld shape offers easy control while frothing milk or mixing drinks.
- Sleek modern design adds a stylish touch to any kitchen or coffee station.

COBY Rechargeable Milk Frother with Stand



JS-GZ-017

- 3-speed control for light, medium, or high-speed mixing
- Sleek black and gold finish adds a modern, premium look to any kitchen
- Includes a matching stand for neat, upright storage on the countertop.
- Rechargeable design with convenient USB-C charging
- Built-in 400mAh battery for cordless everyday use

Coby Hot Air Popcorn Popper



BMH-1201

- Pops up to 4 quarts of fresh popcorn in under 3 minutes using powerful hot air technology.
- Makes light, fluffy popcorn with no oil or preservatives needed for a healthier snack option.
- Includes a measuring cup that also works as a butter melting tray for rich, theater style popcorn.
- Pops directly into your serving bowl for easier serving and less mess on the countertop.
- Ventilated cover helps reduce steam buildup so popcorn stays fresh and crispy.



Coby Hot Air Popcorn Popper

BMH-1202

- Pops up to 4 quarts of fresh popcorn in under 3 minutes using powerful hot air technology.
- Makes light, fluffy popcorn with no oil or preservatives needed for a healthier snack option.
- Includes a measuring cup that also works as a butter melting tray for rich, theater style popcorn.
- Pops directly into your serving bowl for easier serving and less mess on the countertop.
- Ventilated cover helps reduce steam buildup so popcorn stays fresh and crispy.

COBY Rapid Egg Cooker



ZDQ-601

- Cooks Up to 6 Eggs at Once – Perfect for families or meal prep
- 210 Watts of Efficient Power for Fast, Even Cooking
- Advanced PTC Heating Element for Consistent Results
- 3 Doneness Settings – Soft, Medium, or Hard Boiled
- Automatic Shut-Off with Overheat Protection for Safety
- One-Touch Operation with Indicator Light

COBY 4.2 Qt Glass Air Fryer

C-GAF-01

1500W

4.2 qt

No PFAS



- Powerful 1500W heating cooks faster and more evenly for crispy results with less wait time
- Five one touch cooking presets (Default, Bake, Air Fry, Crisp, Keep Warm) make it simple to get consistent results without guessing
- Safe, healthy cooking design with food contact materials declared to meet applicable food safety standards (includes silicone baking tray)
- Easy to clean: removable accessories and wipe clean interior; do not immerse the unit so maintenance stays quick and straightforward
- Built in safety guidance for everyday use: overheat and burn prevention reminders, stable countertop operation, and automatic standby behavior after cooking ends

COBY 5 Qt. Oval Slow Cooker



C-SC5QT-01

- 5 Qt. oval slow cooker with a roomy family-size capacity
- Removable ceramic pot for easy serving and cleaning
- Durable powder-coated housing for a modern countertop look
- Cool-touch handles for safer, more comfortable carrying
- Stylish wood grain accents for an elevated design
- Tempered glass lid lets you monitor cooking without lifting
- No-skid feet help keep the unit stable during use

COBY 6.3 Qt Electric Pressure Cooker With touch screen LED Display



GT605-M21



- 1000W high-performance electric pressure cooker with durable glossy plastic body and stainless steel lid
- Large 6-liter capacity ideal for family meals, batch cooking, soups, grains, and more
- Bright curved color display with one-touch control panel for simple, intuitive operation
- 12 preset cooking programs including Soup, Meat, Bean, Rice, Steam, Eggs, Beef, Grains, Fish, Poultry, Sauté, and Yogurt
- Advanced safety and convenience features including patented lid safety lock, 24-hour delay timer, adjustable pressure up to 70kPa, and automatic keep-warm function

COBY 41oz Citrus Juicer with Dual Direction Juicing

C-CJ-01GRN

C-CJ-02BLU



- Large 41 oz. capacity makes enough fresh juice for the whole family
- Two-way rotating cone helps maximize juice extraction from every orange, lemon, or lime
- Auto-start operation begins when fruit is pressed onto the cone for easy everyday use
- Removable parts and juice collector tray make cleanup quick and convenient
- BPA-free design with non-slip feet and dust cover for safe, stable, and tidy storage

COBY 24oz Citrus Juicer with Dual Direction Juicing

C-CJ-03GRN

C-CJ-04BLU



- 24 oz. capacity is ideal for fresh juice at breakfast or anytime
- Two-way rotating cone helps maximize juice extraction from every orange, lemon, or lime
- Auto-start operation begins when fruit is pressed onto the cone for easy everyday use
- Removable parts and juice collector tray make cleanup quick and convenient
- BPA-free design with non-slip feet and dust cover for safe, stable, and tidy storage

Coby 2 IN 1 Rechargeable Electric Wine Opener



C-WO-01GRN
C-WO-02BLU
C-WO-03BLK
C-WO-04CRM

- Refined & upscale finish that brings a premium look to any countertop
- Easy touch button design makes opening wine simple and comfortable
- Rechargeable battery with Type C charging offers cordless convenience
- Clear viewing window lets you see the cork removal in action
- Built in LED light gives a clear operating signal while in use
- Includes a foil cutter for quick and easy seal removal

Coby 5 IN 1 Rechargeable Electric Wine Opener Kit

C-WOK-01



- One stop solution for wine opening, pouring & preserving
- Convenient storage base
- Brushed stainless steel body case, exquisite and smooth
- Strip-line button, comfortable for operation
- Rechargeable lithium battery with TYPE-C port
- Visual uncorking process with transparent shell
- LED light for convenient indication

Coby 5 IN 1 Rechargeable Electric Wine Opener Kit



C-WOK-03

- Stylish curved design adds a modern, eye catching look
- Textured pattern button offers a comfortable and easy grip
- LED indicator light shows operation clearly at a glance
- Transparent shell lets you watch the uncorking process
- USB Type C rechargeable for easy and convenient charging
- Includes: rechargeable electric wine opener, foil cutter, wine pourer, wine stopper, storage base, and charging cable.

Coby 5 IN 1 Rechargeable Electric Wine Opener Kit



C-WOK-02

- One stop solution for wine opening, pouring & preserving
- Convenient storage base
- Strip-line button, comfortable for operation
- Rechargeable lithium battery with TYPE-C port
- Includes rechargeable electric wine opener, foil cutter, wine pourer, wine stopper, storage base, and charging cable.

COBY Belgian Waffle Maker



WM-184

- 180° Flip Design – Rotates to evenly spread batter for perfectly cooked waffles.
- 1" Thick Belgian Waffles – Creates thick, fluffy Belgian-style waffles every time.
- Large 30 cm Cooking Plates – Extra-wide plates for full, evenly baked waffles.
- Double Non-Stick Plates – Food releases easily and cleanup is quick.
- Automatic Temperature Control – Maintains consistent heat for even baking.
- Power & Ready Indicator Lights – Clearly shows when the unit is preheated and ready to cook.
- Premium Stainless Steel Finish – Durable housing with a modern, high-end look.
- Space-Saving Upright Storage – Stores vertically for easy cabinet storage.



COBY Digital 2-Slice Waffle Maker

WM-198

- Powerful 1600W Heating – Delivers fast heat-up and consistent baking performance.
- Colorful Digital Display – Bright screen makes it easy to monitor cooking status.
- Countdown Timer & Temperature Control – Knob display shows remaining baking time and temperature.
- No-Mess Edge Design – Built-in overflow channel helps prevent batter spills.
- Anti-Steam Design – Engineered to safely direct steam away during cooking.
- Audible Ready Buzzer – Alerts you when waffles are perfectly baked and ready to serve.
- Large Dual Waffle Plates – Spacious 253 × 214 mm cooking area for two waffles at once



COBY Digital 2-Slice Waffle Maker

WM-197

- High Power Performance – 1600W heating element delivers fast, consistent waffle baking.
- 5 Browning Levels – Choose from five settings for light, golden, or crispy waffles.
- High-Contrast LCD Display – Clear digital screen for easy viewing and control.
- Countdown Timer – Displays the remaining baking time for precise results.
- Overflow Moat Design – Built-in channel helps catch excess batter and keeps counters clean.
- Finished Bake Buzzer – Audible alert lets you know when your waffles are ready.
- Deep 0.8" Waffle Plates – Creates thick, fluffy waffles with a crisp exterior.
- Large Dual Waffle Plates – Makes two waffles at once with a large 174 × 210 mm cooking area.

COBY 12-Inch Electric Pizza Oven with Adjustable Heat Control

C-PMAH-01BLU



- Cool-touch handle for safer opening and closing
 - Ceramic-coated cooking plate for easy food release and easy cleanup
 - Skid-resistant feet help keep the unit stable on the countertop
 - Adjustable temperature control for greater cooking flexibility
 - Power and ready indicator lights for easy operation
- 12-inch cooking plate fits pizzas, quesadillas, flatbreads, and more

COBY Electric Pizza Maker with Ceramic-Coated Plate



C-PM-01GRN

- Cool-touch handle for safer opening and closing
 - Ceramic-coated cooking plate for easy food release and quick cleanup
 - Skid-resistant feet help keep the unit stable on the countertop
 - Automatic temperature control for consistent cooking results
 - Power and ready indicator lights for easy operation
- 12-inch cooking plate fits personal pizzas, quesadillas, flatbreads, and more



COBY 4 Inch Mini Waffle Maker with Ceramic Coated Plates

C-MWM-01-GRN

C-MWM-02-BLU



- Ceramic coated plates for easy food release and quick cleaning
- Compact mini size fits easily in any kitchen or countertop space
- 4 inch cooking surface perfect for individual portions
- Simple plug in design ready to cook in minutes
- Cook waffles, paninis, hash browns, and even biscuit pizzas
- Easy to use and easy to store
- Great for quick breakfasts, snacks, and fun family meals



-  REMOVABLE CERAMIC PLATES
-  EASY TO CLEAN
-  NON-STICK SURFACE
-  EVEN HEATING

COBY 3-in-1 Breakfast Maker Waffle, Sandwich & Grill with Removable Ceramic Plates

C-SMRP-01-GRN
C-SMRP-02-BLU



-  REMOVABLE CERAMIC PLATES
-  EASY TO CLEAN
-  NON-STICK SURFACE
-  EVEN HEATING

Removable ceramic-coated plates for easy cleaning and long-lasting performance
 Interchangeable plates for waffles, sandwiches, and grilling
 Automatic temperature control for consistent cooking results
 Power and ready indicator lights for easy operation
 Cool-touch housing for safe handling
 Skid-resistant feet for added stability

COBY 2-in-1 Ceramic Panini Press Grill

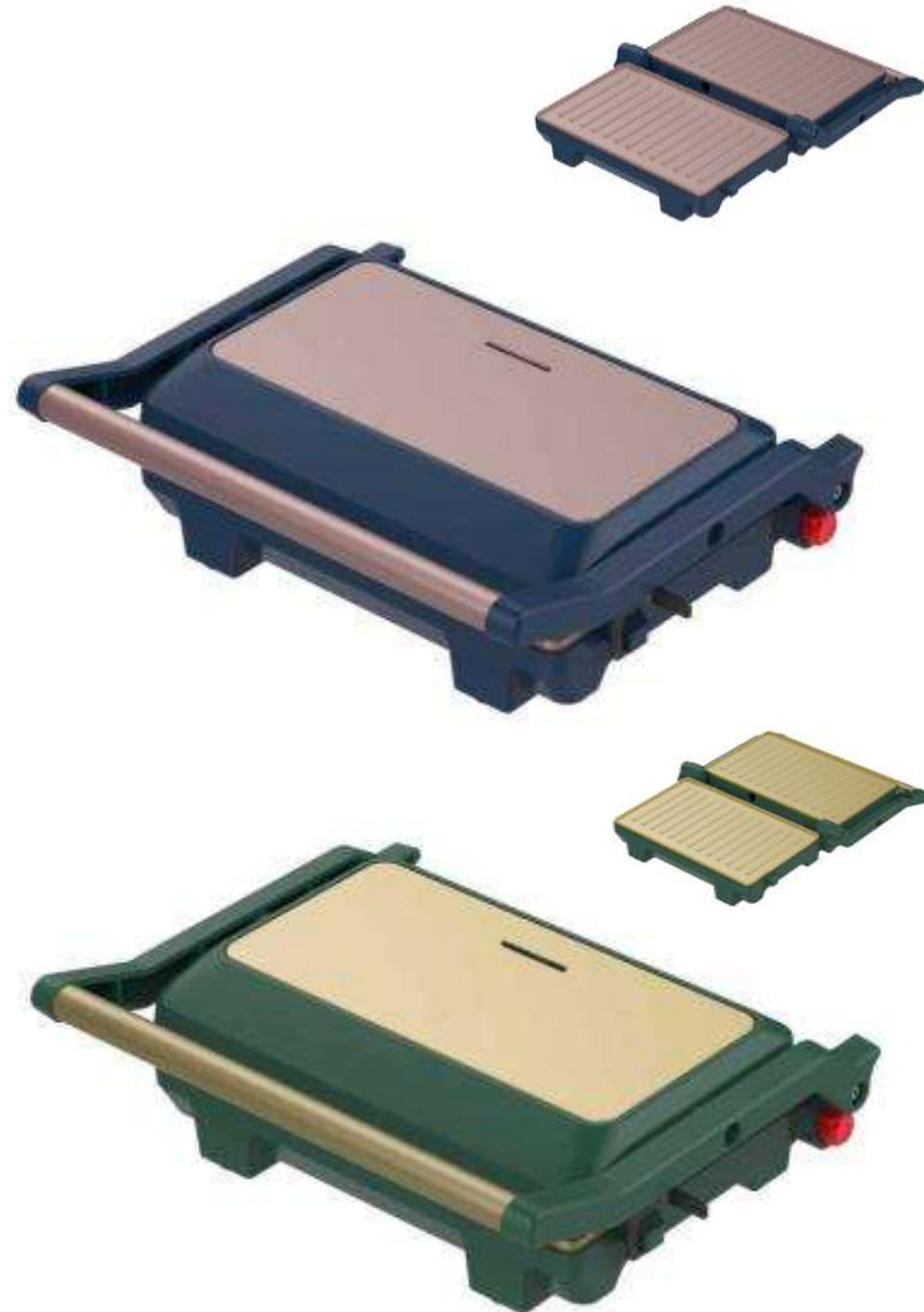


SL-106BLU
SL-106GRN



- Ceramic cooking plates help food release more easily and make cleanup quick and easy.
- Floating hinge adjusts to thicker foods for more even grilling of sandwiches, meats, and snacks.
- Opens flat to 180° so it can be used as both a contact grill and an open grill.
- Compact size fits easily on the countertop at approximately 10.9 x 8.8 x 3.7 inches.
- Cool touch handle with power and ready indicator lights makes it simple and convenient to use.

COBY Grill & Panini Maker with Ceramic Coated Plates



C-PM-01-GRN

C-PM-02-BLU

- Supports 180° opening for versatile grilling
- Ceramic-coated nonstick plates for easy cooking and quick cleanup
- Grill plate design with floating top plate for even results
- Automatic temperature control with power and ready indicator lights
- Cool-touch handle for safer use
- Locking design with upright storage to save counter and cabinet space
- Skid-resistant feet for added stability
- Built-in overheat protection for added safety



Thanks !

Do you have any questions?
Mayer@ModernKitchenwareNyc.com

+1 (347) 744-0661

1384 Broadway Suite 1201

New York NY 10018