

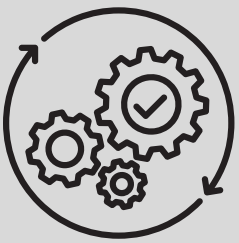
Quality Craftsmanship & First Class Customer Care

COSBY PRIMARY SCHOOL

—

INTRO TO THE PROJECT

Quality Workmanship & First Class Customer Care.



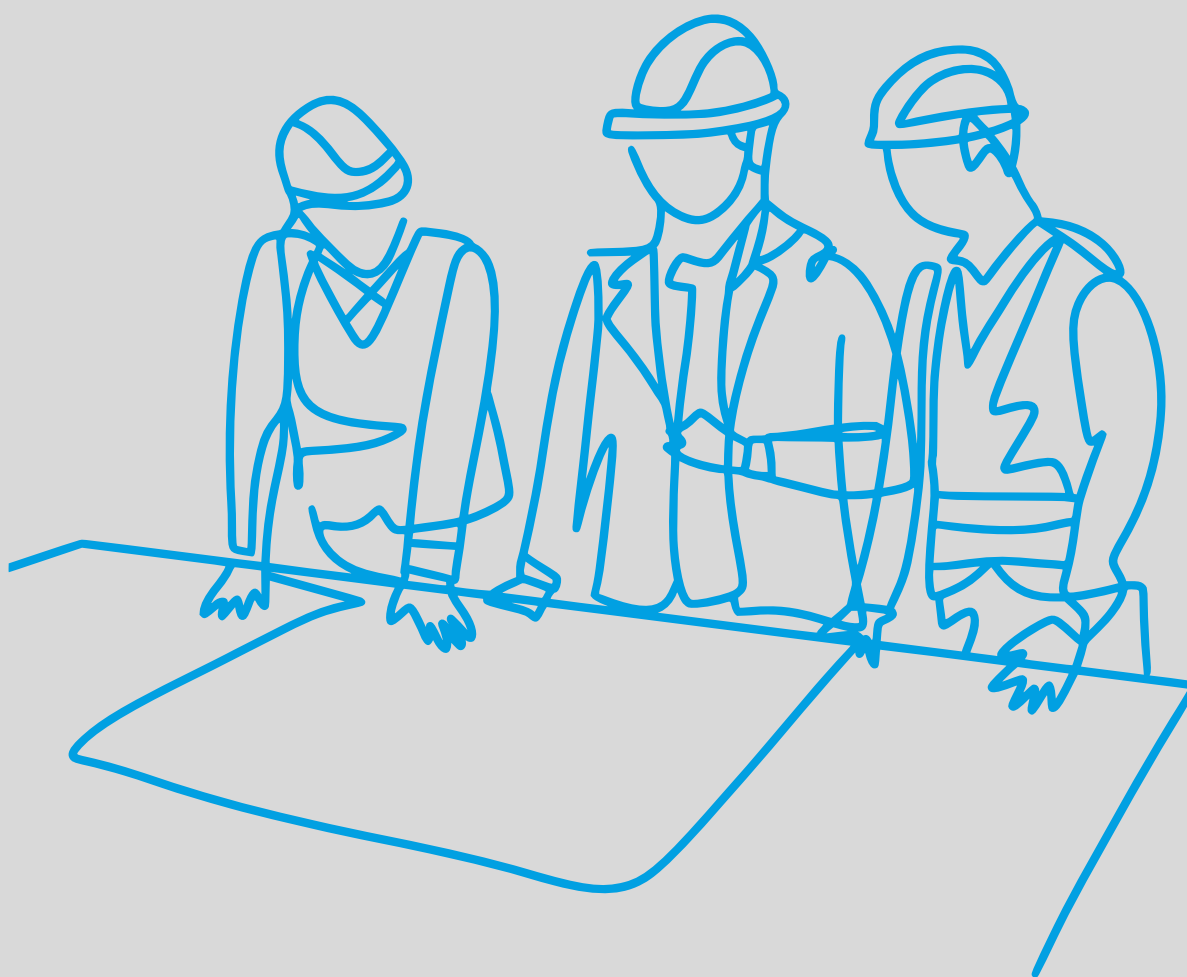
Project: Cosby Primary School



Client: YMDBOON



Duration: 6 months



THE PROJECT...

The project at Cosby Primary School, completed in collaboration with YMD Boon, provided a modern classroom block that enhances the teaching and learning environment.

The land presented a slight challenge, but through careful planning, we were able to overcome it and deliver a space that meets the needs of both pupils and staff.



The new classroom block at Cosby Primary School features large windows that allow for plenty of natural light, creating a bright and welcoming environment for students. Additionally, easy access around the field has been incorporated, ensuring safe and convenient travel between areas of the school for both pupils and staff.



mjE

CONTRACTS^{Ltd}

Quality Workmanship & First Class Customer Care.

The addition of new toilet facilities was a valuable part of the project and has been greatly appreciated by both staff and students. It was a pleasure to incorporate this essential improvement into the overall design.



The classrooms have been designed to make the most of the available space, providing both teachers and pupils with an ideal environment to learn and teach. The layout maximises functionality, ensuring a comfortable and efficient setting for educational activities.



Final Thoughts



In summary, the project at Cosby Primary School highlights the successful collaboration between MJE Contracts, YMD Boon and the school.

The modern classroom block, along with improved facilities and safe access, creates an ideal learning environment for both teachers and pupils.

This strong partnership has resulted in a project that will benefit the school for years to come.



CONTRACTS^{Ltd}

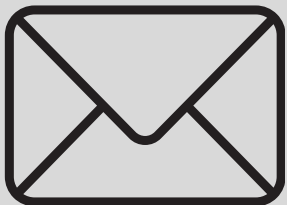
Quality Workmanship & First Class Customer Care.



www.mjecontracts.co.uk



[www.linkedin.com/company/mj
e-contracts-leicester-limited](http://www.linkedin.com/company/mje-contracts-leicester-limited)



info@mjecontracts.co.uk



0116 2541040

