

Name: \_\_\_\_\_

Date: \_\_\_\_\_

# COMPREHENSIVE LIVE BLOOD ANALYSIS REPORT

A demonstration of the Living Blood



## Quantum Vitality

### RED BALL TEST

When the drop of blood appears on the finger it should bead up. If the ball is absent, it indicates:

- Low protein due to either lack of protein in the diet or poor digestion of protein
- Kidney problems
- anemia or low blood iron

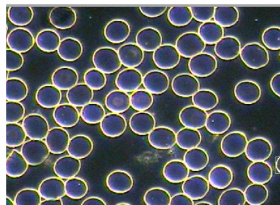


\_\_\_\_\_ball present    \_\_\_\_\_poorly formed    \_\_\_\_\_ball absent

**BLOOD TYPE** \_\_\_O \_\_\_A \_\_\_B \_\_\_AB

### THE IDEAL BLOOD PICTURE

The blood cells are uniform in size and shape. They over in their own space, not overlapping or sticking together, but gently bouncing off each other. The blood serum surrounding the cells is clear without parasitic, bacterial forms or other undesired masses.

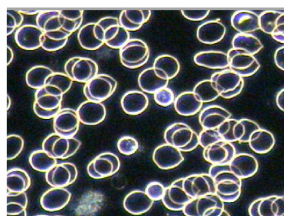


### RED BLOOD CELLS

#### PROTEIN LINKAGE LEMON SHAPE RBC

**Cause:** Altered pH, stress, coffee, hormonal imbalances, toxicity, EMF exposure, poor protein digestion and pancreatic function. Imbalance electrolytes. **Sign:** fatigue, (RBC don't adequately carry oxygen) blood sugar fluctuation, poor circulation.

1 2 3 4 5

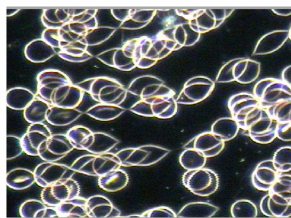


#### ANISOCYTOSIS

##### Macrocytes: RBC's larger than normal

**Cause:** Various types of anemias, liver dysfunction, lack of B-12, folic acid, poor digestion, poor absorption of fat soluble A & E vitamins, low stomach acid, lack of good intestinal bacteria. RBC may be infested with chondrites.

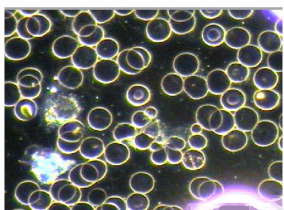
**Signs:** shortness of breath, fatigue, levelheadedness.



**ROULEAUX.** Stacked RBC's increase level of protein linkage, cell agglutination. **Cause:** Same as above. Poor protein selection/digestion, consider blood type diet, low stomach acidity. worry.

**Signs:** Fatigue, shortness of breath, cold hands and feet, poor circulation, stress on the heart and possible edema

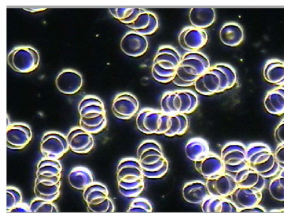
1 2 3 4 5



##### Microcytes - RBC's smaller than normal

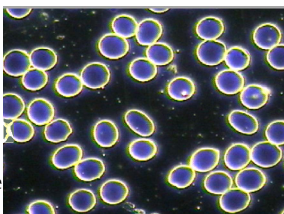
**Cause:** Frank anemia **Signs:** Similar to previous also bone problems, osteoporosis. **Notes:** Disintegration of RBC into smaller parts of fragments indicates serious imbalance of toxic focus and tendency towards hemolytic anemia

1 2 3 4 5



**RBC AGGREGATED:** Blood sludge, RBC's clumping **Cause:** Toxicity and altered pH from long term stress and poor diet, coffee, meat, cigarettes, drugs, low minerals, low stomach acid, poor digestion, heavy metal, EMF. Inhibits O2 and CO2 transfer. **Signs:** More of the above extreme stress on the heart and very poor circulation, degenerative health situation.

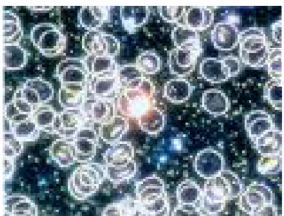
1 2 3 4 5



**OVALOCYTES** Oval shape RBC. **Cause:** Lack of B12 and folic acid pernicious anemia lack of B vitamins, endocrine or hormonal imbalance.

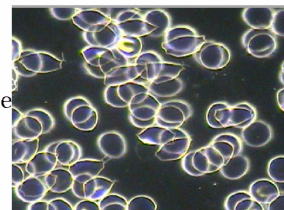
**Signs:** Depression, fatigue, dizziness, PMS

1 2 3 4 5



**BITES OF RBC** **Cause:** Low oxygenation, possible viral activity, possible decrease lung function, **Signs:** chronic fatigue.

1 2 3 4 5

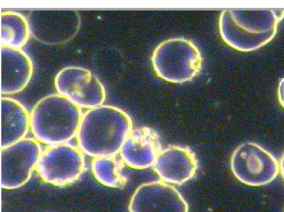


**HELMUT CELLS** semicircle or crescent shape RBC's

**Cause:** liver and gall ducts may be plugged. Possible type of schistocyte.

1 2 3 4 5

**PROTUSIONS:** **Cause:** Similar to above. low bile salts, low EFA's and UFA's **Signs:** Gallstones, indigestion, gas.



**POIKILOCYTES:** Bottle cap shape corrugated membrane. **Cause:** Low good fat, poor digestion of fat, lipid peroxidation, free radical stress, food additives, sodas, nitrates, fried foods, environmental toxins, cigarettes, pesticides, metals, street/prescription drugs, low antioxidant capacity. **Signs:** Poor circulation, low energy, premature aging,

1 2 3 4 5

**ECHINOCYTES:** RBC's with sharp burrs. spikes with regularity, shrunken and dying, 1% normal. **Cause:** Free radicals, toxins, street/ prescription drugs. alcohol, poor diet, liver or spleen stress. **Signs:** Poor circulation, low energy, degenerative disease.

1 2 3 4 5

**SCHISTOCYTES:** Broken or fragmented membranes. **Cause:** Inhalation of fumes, ingestion of toxins, drugs, free radicals, coffee, cigarettes, stress, lack of assimilation, paratism. **Signs:** Anemia. low energy, degenerative disease.

1 2 3 4 5

**PARASITIZED RBC.** **Cause:** Altered pH/ biological terrain, dysbiosis of blood and other tissues. **Signs:** Frequent clods, low energy, anemia, fungal, yeast or parasitic problems, degenerative condition if severe.

1 2 3 4 5

**SHADOW CELLS:**

Hemolysed RBC , faint and barely visible

**Cause:** Oxidative stress

1 2 3 4

**TARGET CELLS:** Circles in the middle of cells, yellow circle in darkfield. **Cause:** Increase cholesterol and lecithin content, bile insufficiency, weakness in liver or spleen, thasselemia anemia , low B12/ folic acid. **Signs:** Fatigue.

1 2 3 4 5

**IWBC INACTIVE;** Granule not streaming, round in shape, low viability. **Cause:** Bacterial, viral, fungal or other microbial infection, sugar alcohol, cigarettes or other immunosuppressive substances, altered pH ow in Vit C, Zinc or other minerals, digestive weakness. **Signs:** Frequent colds/flu, fatigue, allergies.

1 2 3 4 5

**NEUTROPHILS:** Hypersegmented 5= nuclei. **cause:** Low B-12/ folic acid. anaemia, or digestion, lack of absorbtion of Vit A & E , intestinal dysbiosis, minerals deficiency, weakness in liver, kidney or spleen could be congenital.

1 2 3 4 5

**EXCESSIVE BASOPHILS:** Similar to neutrophils but smaller, granules are motile, 1- 2 % is normal. **Cause:** Allergies to inhalants, mold, dust, pollen , animal dander, chemical, perfumes, stressed kidneys, diuretic. **Signs:** Runny nose & eyes, stuffed up sinus, flu or cold like symptoms, water retention and swelling.

1 2 3 4 5

**EXCESSIVE EOSINOPHILS:** WBC with 2 nuclei, round non motile coarse granules concentrated on outside. 2-5 % is normal. **Cause:** Parasites , allergies, food or chemicals sensitivities, inflammation, menstruation, cigarettes or second hand smoke. **Signs:** Fatigue, immunity problems, aches, pain, soreness, sinus congestion.

1 2 3 4 5 .

**PARASITIZED WBC:** infested WBC worm like filaments or chondrits extending out from cell, enlarged or lysed cell. **Cause:** Overburdened immune system, dysbiosis, infection, microbes in excess. **Sings:** Fatigue, digestive problems, lowered immune system

1 2 3 4 5

**EXCESSIVE LYMPHOCYTES:** Non granular B and T cells. **Causes:** Viruses, free radicals and toxins, chemical, pollution, pesticides, food additives EMF's. **Signs:** Fatigue, low oxygenation. **Note:** Too few or white areas on edges denotes immune deficiency, viral activity.

1 2 3 4 5

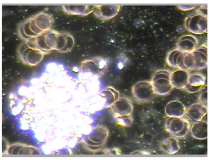
**WHITE BLOOD CELLS WBC**

**FEWER WBC THAN NORMAL:** ( approx 1 WBC per 700 RBC ) if healthy this is OK. If not then it is problematic

**MORE WBC THAN NORMAL:** **Cause:** Lack of sleep, microbial, viral, mycoplasma, disease, excess animal proteins, biological warfare.

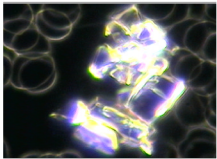
1 2 3 4 5

## CRYSTALLINE FORMATIONS



**CHOLESTEROL CRYSTAL:** Cause: Low in good fat, EFA's cold stressed oils, poor digestion of fats (normal in doing chelation or arterial cleansing) **Signs:** High blood pressure, clogged arteries, arterial plaque.

1 2 3 4 5

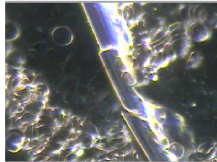


### TRIGLYCERIDE CRYSTALS,

**ATHEROSCLEROTIC PLAQUE:** Appears as broken glass.

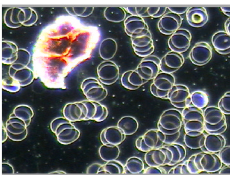
**Cause:** Same as above. **Signs:** Same as above.

1 2 3 4 5



**URIC ACID CRYSTAL:** Cause: Uric acid. poor digestion or excess of animal protein, meat, dairy. **Signs:** Gout, arthritic symptoms., high blood pressure, kidney stones.

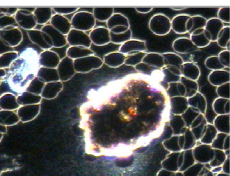
1 2 3 4 5



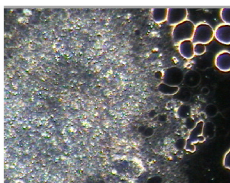
**ACTINOMYCIN CRYSTAL:** Cause: Antibiotic produce by the body.

**Signs:** Chronic bowel toxicity, from such source as tumor necrosis, high bacterial development from leaky gut syndrome, food poisoning, appendicitis.

1 2 3 4 5

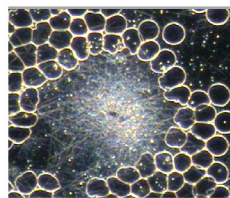


## OTHER BLOOD ELEMENTS



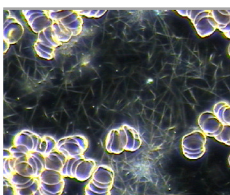
**PLATELET AGGREGATION:** Whitish masses with irregular shapes, sizes. **Cause:** Bad fats, transfatty acids, high triglycerides, meat, sodas, stress, caffeine, chocolate., diet low in fruits and vegetables. **Signs:** Poor circulation, headache, migraines, blood clots, risk of stroke and cardiac problems, diabetes or viral infection..

1 2 3 4 5



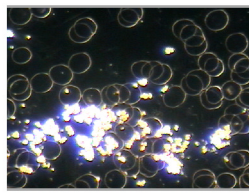
**SPICULES:** Spiky foci of short fibrin material, **Cause:** Liver congestion, bowel stress from toxicity, poor digestion, fatty build up, bowel congestion. **Signs:** Constipation, bloating, headaches, heartburn, gas, flatulence.

1 2 3 4 5



**FILITS:** Needles in the plasma. **Cause:** Congestive hinderance in the circulatory system this form is observe only in darkfield, the thicker the filits the more the condition is related to pathogenicity. **Signs:** Arthritic and joint pain, circulatory problems, inflammation, migraine, colitis

1 2 3 4 5.



**THECITS:** Special primitive bacteria, yeast marker.

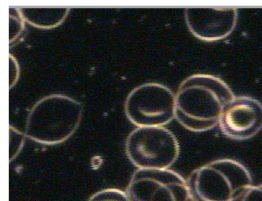
**Cause:** Candida, parasites, intestinal dysbiosis, leaky gut, antibiotics, chlorinated water, birth control pills, steroids, low friendly bacteria, possible dental focus of toxicity, amalgams root canals, cavitation, crowns, caps, metal in the mouth. **Signs:** Fatigue, sugar cravings, blood sugar imbalance, acne, bad breath, mental fogginess.

1 2 3 4 5



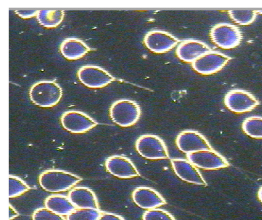
**SYMPROTITS:** Double spore rod form bacterium, streptococci (like a beaded necklace) staphylococci (hooded form). **Cause:** Altered pH and terrain, may be parasitizing the RBC's. stressing the blood may provide information. **Signs:** lowered immunity.

1 2 3 4 5



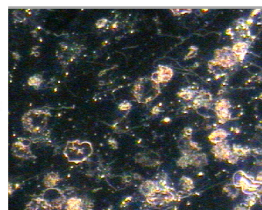
**MYCOPLASMA:** Cell wall deficient bacteria, donut shape can be in plasma or attached to cell. **Cause:** Altered pH, biological terrain, poor diet stress, bio-warfare, overworked, lack of sleep, may be the result of antibiotic usage., **Signs:** Fatigue, arthritis, pneumonia, genitourinary infections, neurological problems, poor circulation, weakened immunity, ache and pains bone soreness, physical strain.

1 2 3 4 5



**CHONDRITS:** Thin worm-like motile filaments, sometimes emerging from RBC's, early fungal form, parasitized RBC's. **Cause:** Altered pH/ biological terrain, alkaline blood cause by over acid tissues.

1 2 3 4 5



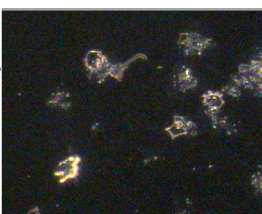
### FREE CHONDRITS

1 2 3 4 5



**ASCITS:** Thicker bacterial strand, large amount, pathogenic, virulent form. Ominous finding indicates fungus in tissues and organs. **Cause:** Altered pH/ biological terrain, silver amalgams, root canals, caps gold fillings, periodontal disease, and other oral pathology. **Signs:** muddle thinking, sore muscles, general malaise, extreme fatigue

1 2 3 4 5



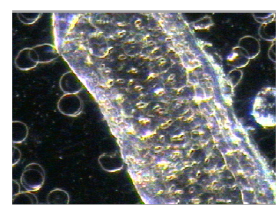
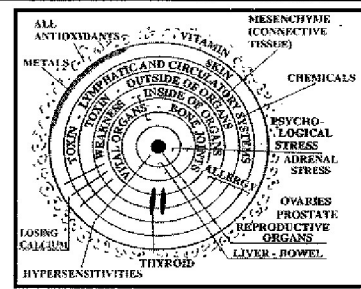
**SYNACITS:** Ballooned and expanded Ascits. Higher level of pathogenicity.

These are later phase of development of Ascits and their appearance is always associate with degenerative conditions.

**Cause:** Similar to Ascits. Healthy blood doesn't produce ascits or synacits.

1 2 3 4 5

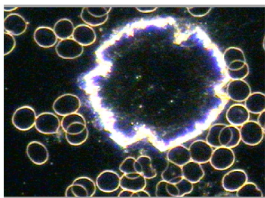
## Layered Dry Blood



**EXOGENOUS PARASITE Cause:** Intestinal dysbiosis, contamination from, pets, fecal matter on hands, sexual activities, money, raw fish, or commercial meat, solvents.

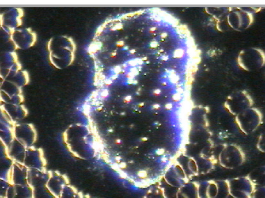
**Signs:** Digestive difficulties, constipation diarrhea and a host of symptoms. Metal in the body support parasites development. They are the # 1 causative factor behind most illness

1 2 3 4 5



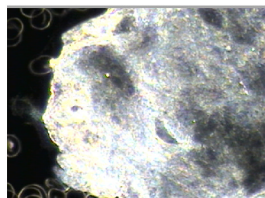
**PROTOPLAST:** Bacterial or fungal cell with no rigid wall. **Cause:** compromised immune system, tooth decay, amalgam removal, recovering from viral infection. **Signs:** Fatigue, skin disorder, frequent colds, flues and infections.

1 2 3 4 5



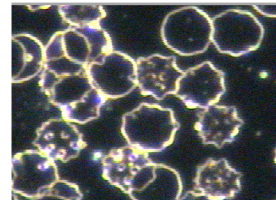
**COLLOID SYMPLAST:** crystalline granular mass that may accumulate on the interior surface of the arteries. **Cause:** High cholesterol, calcium out of solution, toxins chemicals, heavy metals, poor digestion, liver problems high blood alkalinity. **Signs:** Poor circulation, cold hands and feet, calcium imbalance with associated pain in the calves.

1 2 3 4 5



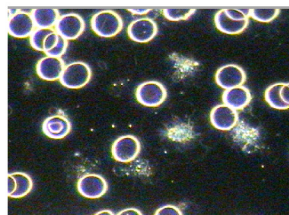
**ACANTHOCYTES:** RBC's with sporadic symprotit inclusions. **Cause:** Liver/spleen indication when appearing over 1% of the total RBC's. **Signs:** Potassium loss, fatigue, drowsiness. Vit E deficiency, hepatitis.

1 2 3 4 5



**PTEROHARPENS:** Butterfly shape gray formation. Often seen around platelets. cell wall deficient bacteria. **Cause:** Intestinal dysbiosis, lowered friendly bacteria, leaky gut syndrome, poor protein digestion, (they feed on amino acids). **Signs:** Poor circulation, fatigue, heart weakness,

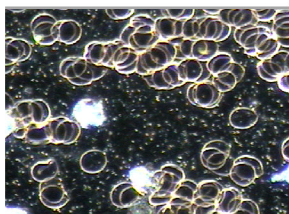
1 2 3 4 5



**SYMPROTITS, SOMATID:** Tiny balls. Normal blood element, present if healthy blood. Macro symprotit suggests rising problem in biological terrain (\* sugar babies\*).

**Signs:** Often indicates yeast /fungus overgrowth.

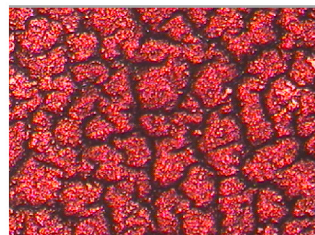
1 2 3 4 5



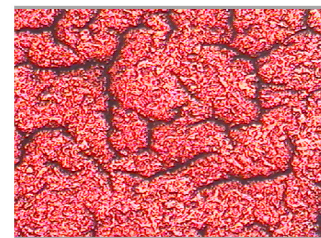
**CHYLOMICRONS:** Fat particles, unabsorbed lipids. Cause normal after eating. Problem after 4 hours. Liver gall bladder problems

**Signs:** digestion problems. High numbers indicate a genetic condition, associated with coronary heart disease, enlargement of liver or spleen glucose intolerance.

1 2 3 4 5

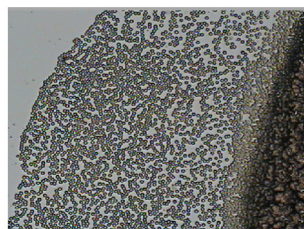


HEALTHY DRY BLOOD



FIBRIN NETWORK MISSING

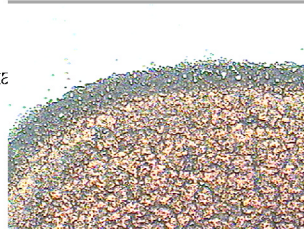
Poor protein digestion



OUTER CELL ADHESION POOR

Lack of free radical scavenger especially Vit C. Low sulphur base amino acids.

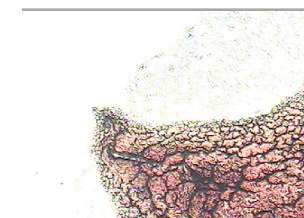
1 2 3 4 5



DARKENED FIBRIN RING, HEAVY METAL RING:

Heavy metals, silver mercury amalgams fillings, bridges, crowns, cigarettes. non-stick pots and pans, aluminum cookware, environmental toxins, smog etc.

1 2 3 4 5



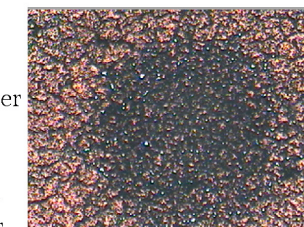
**PERIPHERAL PROTRUSION:** Relates to the head region, brain inner ear, neurotransmitter dysfunction, often indicates root canal toxic focus.

1 2 3 4 5



**GRAYISH WAVES IN THE PERIPHERY:** Metal in fatty tissues, brain, CNS, severe toxicity from metals, muscle sore flabby, losing strength, muddle/slower/ forgetful thinking, fatigue gum sores, tooth abscesses. 1 2 3 4 5

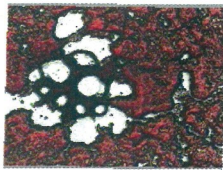
1 2 3 4 5



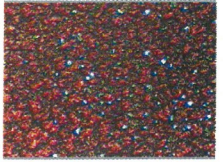
DARK CENTER AREA:

Bowel toxicity, malabsorption, poor assimilation

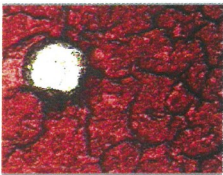
1 2 3 4 5



**DARK CENTER WITH LARGE ROUND ROTS:** Bowel toxicity and inflammation degenerative condition  
1 2 3 4 5



**DARK CENTER WITH SMALL ROTS:**  
**Larger ROTS:** adrenal fatigue, overwork, lack of sleep, worry etc.  
**Smaller ROTS:** Allergies or sensitivity to food, pollen pers etc.\  
1 2 3 4 5



**LARGE ROT IN CENTER :**  
Hormonal imbalance, For men: prostate enlargement, For women: Uterine/ovarian condition, fibroid, bleeding, vaginal conditions, hormonal imbalances.  
1 2 3 4 5



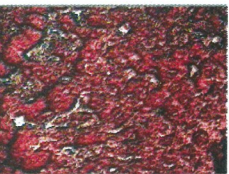
**FIBRINS BULGING OUT:** Parasites, fungus, show up according to their by-products and how they sediment. They appear like crow's feet at the juncture of the fibrin web.  
1 2 3 4 5



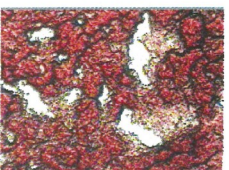
**THYROID IMBALANCE:** Thyroid and other endocrine dysfunction is indicated by raised pink areas.  
1 2 3 4 5



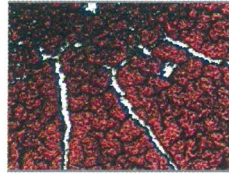
**LARGE RAISE AREAS:**  
Magnesium deficiency, inflammation.  
1 2 3 4 5



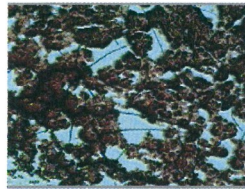
**HORMONAL IMBALANCE:**



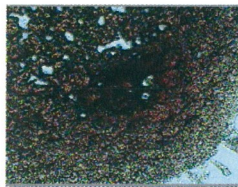
**ROTS FILING BACK IN:** Sign of healing



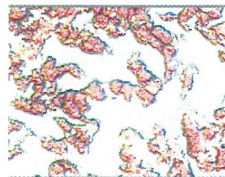
**WHITE RADIAL SPOKES:** Minerals deficient. Calcium/phosphorus off, low boron. Parathyroid imbalance, bone loss, possible kidney problems. Poor assimilation of electrolytes, trace elements. Possible leeching calcium from bone and teeth reserve. pH imbalance, tissues too acidic  
1 2 3 4 5



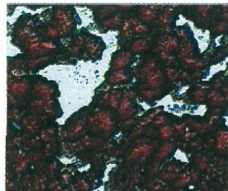
**VIRAL SPIKING,** The presence of fibrin strands traversing lakes indicates a viral influence. Two viruses that are intense enough to cause bridges all across the PPP's are Epstein Barr and Human Herpes strains. Also Vit C deficiency.  
1 2 3 4 5



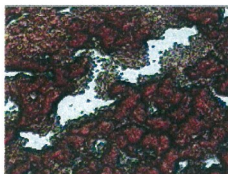
**HEART BYPRODUCT:** Signs: Heart palpitations, dizziness, headaches, tingling hands, yawning Large PPP attached can be related to valve problem, undigested lipids  
Stress on the heart function, magnesium deficiency  
1 2 3 4 5



**LARGE LAKES WITH NO FIBRIN CONNECTION:**  
Degenerative condition, free radical activity, accumulated and/or chronic toxicity, widespread or systemic stress.  
1 2 3 4 5



**SIALIC ACID BEADS:** Aspergillus related conditions, connective tissues disorders, arthritis, rheumatism, lung, fungus, tuberculin disorders, uric acid crystals, undigested animal proteins accumulation, gout, bacteria, sore joints, toxins in connective tissues, fibromyalgia, The larger the lake the more advance. Suggest allopathic testing referral.  
1 2 3 4 5



**LYMPHATIC CONGESTION;** lymphatic, circulatory and mesenchyme congestion in the # 3, 4 and 5 layers indicates a congestive and toxicity problem. Lymphatic drainage and free radical scavenger may be useful  
1 2 3 4 5