

# Slick Way to write and follow instructions for 2 color knitting machine patterns

The Iris pattern is from Gini Knits pattern #688.

Originally these pattern stitches were created for patterned knit inserts that were sewn into sweatshirts in the 1980's.

Knit inserts can also be used in a variety of sewing projects or the pattern stitches make great borders to knit into other projects.



## BELOW IS A SCAN OF INSTRUCTION PAGE FROM PATTERN

**IRIS** ← Name of design

A= WHITE  
B= GREEN  
C= PURPLE ← Suggested colors easy to substitute

IRIS			
ROWS	COLOR 1	COLOR 2	CAM
12 ROWS	A	EMPTY	ST
1~27	A	B	FI
28~45	A	C	FI
12 ROWS	A	EMPTY	ST

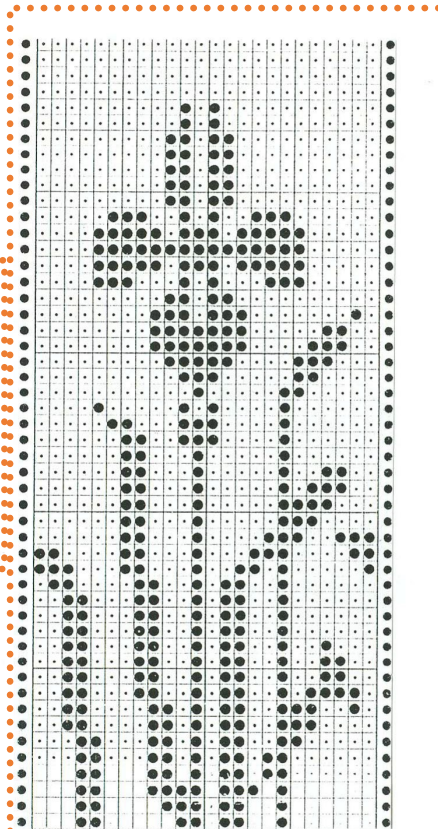
↑ Rows = pattern card rows

Color 1= feeder 1 on knit machine

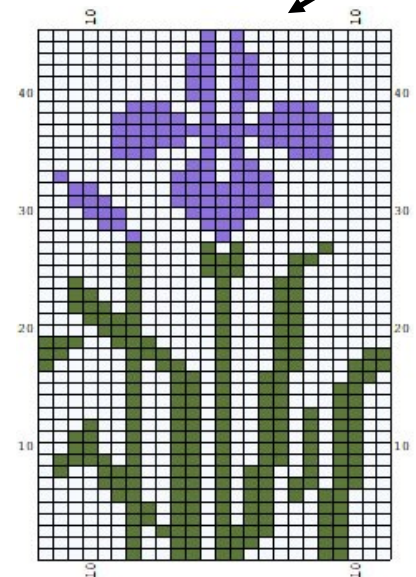
Color 2= feeder 2 on knit machine

Cam= setting on knitting machine to knit plain or 2 color knitting

Punch card with tractor feed



Designaknit color chart



All 45 patterns + more published by Gini Woodward from 1987-2000 are now available on a convenient flash