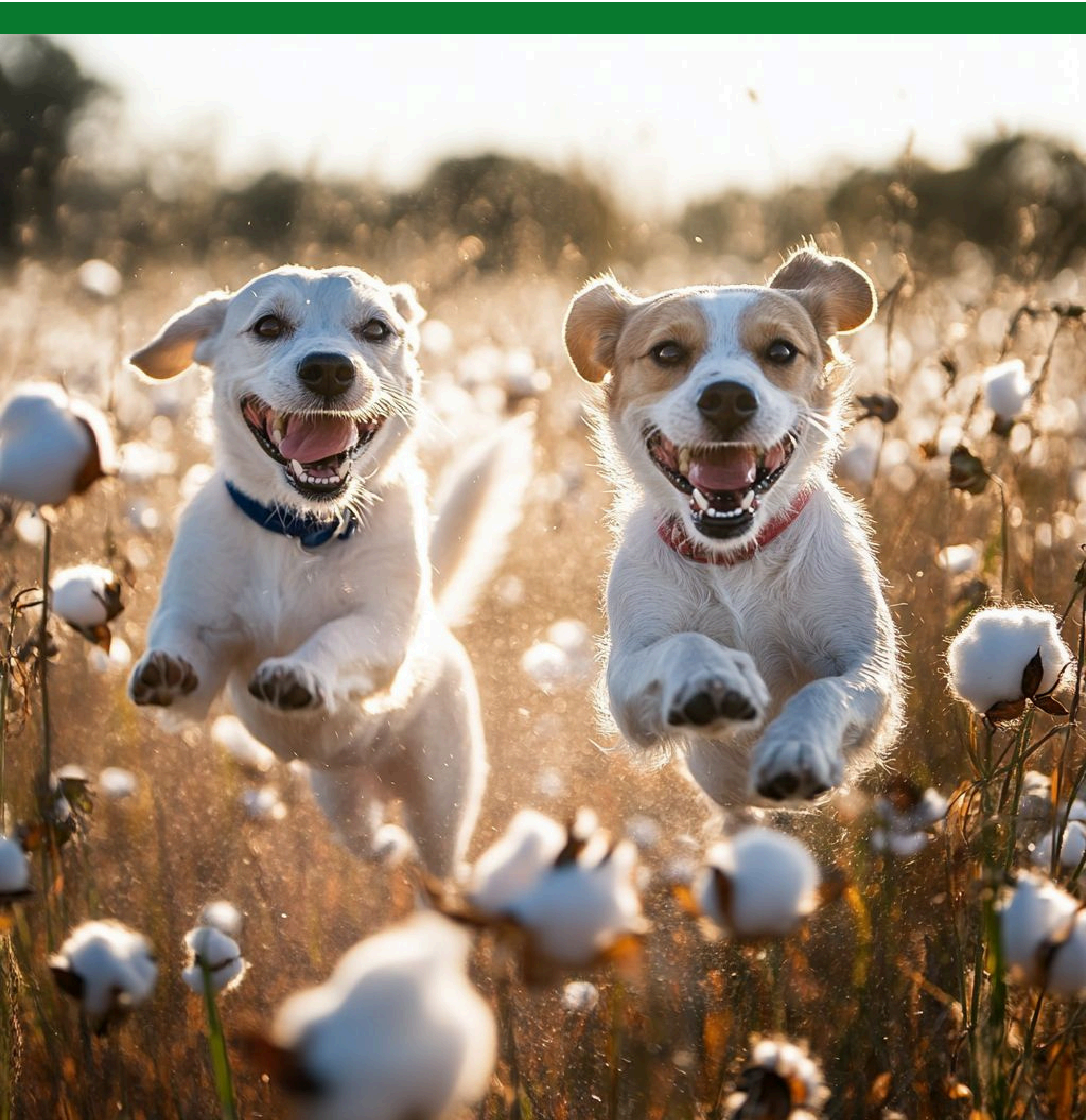



# **Veterinary Product Catalogue**

**Source-to-solution Veterinary Disposables**





## Welcome to **NIMBUS**, your premier destination for top quality veterinary disposables

At NIMBUS, we're more than just a supplier; we're your trusted partner in veterinary excellence. Say goodbye to the traditional model of middlemen and markups. We're revolutionising the industry by taking control of the entire process from manufacturing to delivery. With our direct-to-customer approach, we're streamlining the supply-chain, reducing costs, and passing those savings onto you.

Drawing inspiration from ancient traditions and propelled by modern technology, we at Mediz have embraced the legacy of **cotton** to create premium quality gauze rolls, swabs, lab sponges, bandages and more.

With adherence to stringent international and national regulations, we are ISO 13485:2016 certified, and comply with British Pharmacopoeia (BP) requirements, ensuring that Mediz products meet the highest levels of performance and safety. Through the completion of rigorous testing covering parameters including absorbency, acidity and colouring matter among others, we guarantee the effectiveness and reliability of our products.

We invite all veterinary clinics and distributors seeking reliable disposables to join us as we continue to weave the fabric of woundcare for generations to come...



## We've 'cottoned' on

**Others:** To cut costs, manufacturers often opt for polycotton blends over pure cotton, with little regard for its drawbacks. Polycotton's lack of breathability can lead to discomfort, irritation and itchiness especially in hot and humid conditions, as it traps more heat and moisture than cotton. While cotton is highly absorbent, the presence of polyester in polycotton blends reduces its absorbency. This can affect its performance in certain applications.

**NIMBUS:** Unlike polycotton, our 100% cotton gauze is highly breathable, allowing air to circulate freely around the wound. This helps to maintain a conducive environment for wound healing, and prevents moisture build-up, reducing the risk of infection. Cotton gauze dressings are flexible and conform easily to the contours of the body. This allows for a snug fit over the wound site ensuring optimal coverage and protection.

## We tell no 'p-lies'!

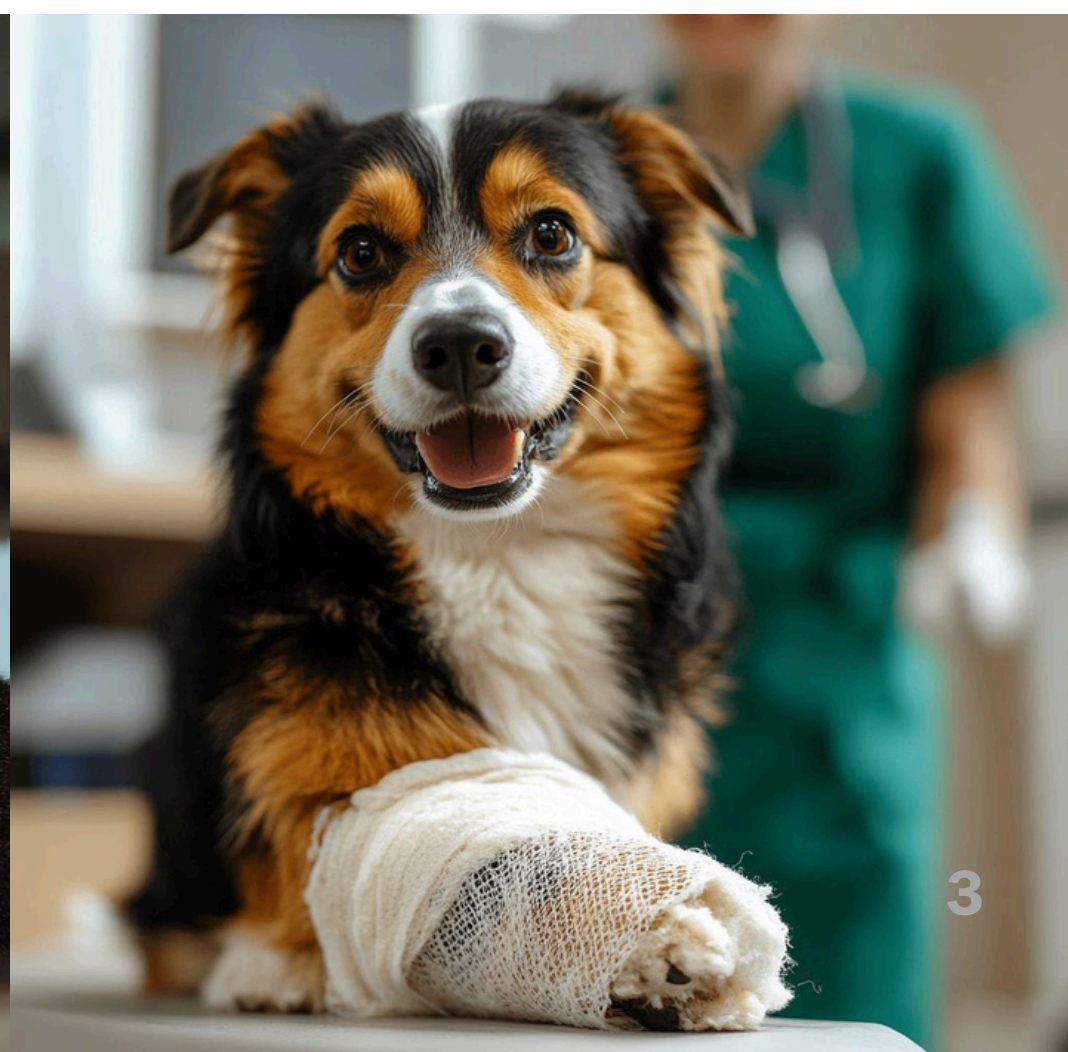
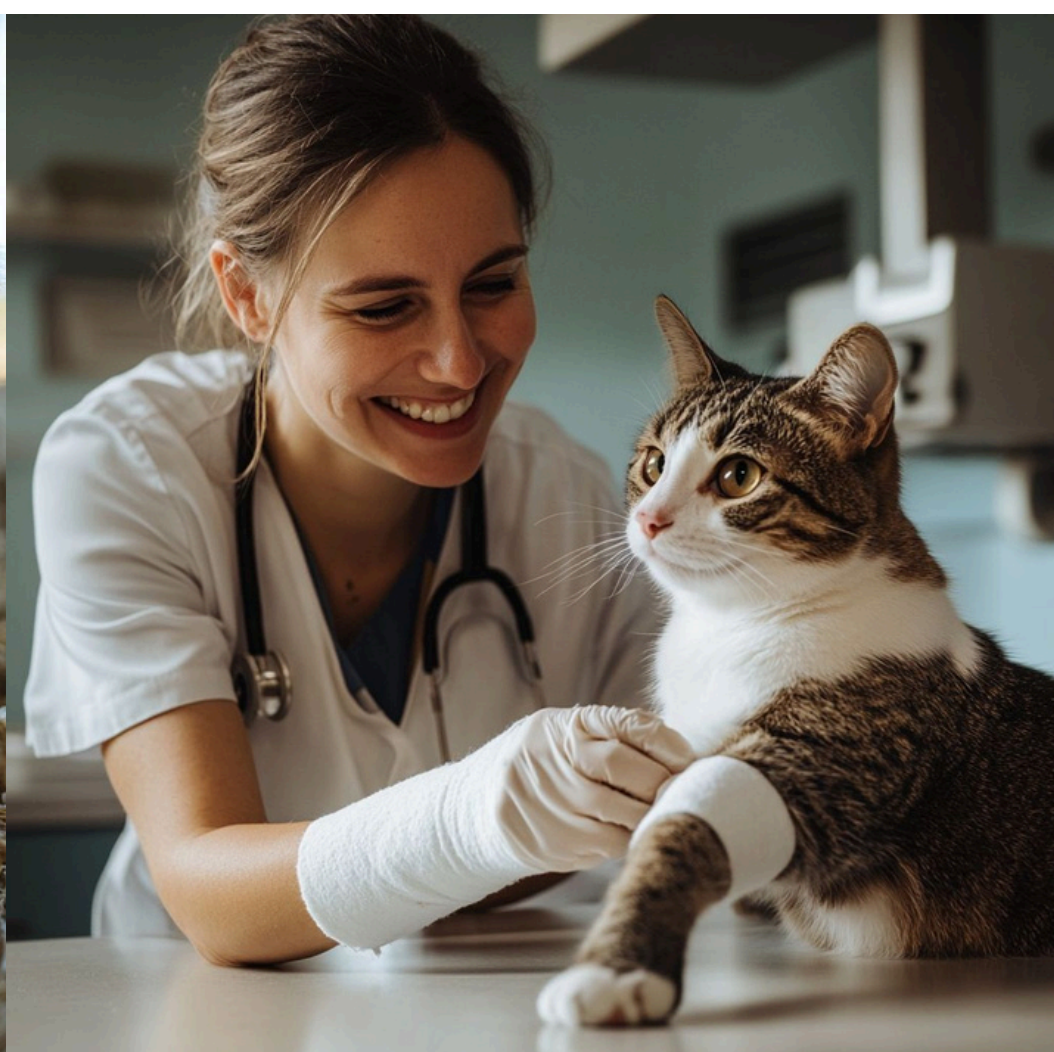
**Others:** The non-disclosure of ply count on packaging can make it difficult for healthcare providers to assess the accuracy of the dressing for specific applications. Without knowing the ply count, it is challenging to ensure consistent outcomes across different products. When purchasing gauze without visibility of ply count, healthcare providers not only receive a substandard product but also compromise the effectiveness of the wound care they provide.

**NIMBUS:** Our ply count serves as a key indicator of the quality and integrity of our products. It allows healthcare providers to assess the thickness and absorbency of the gauze dressing, which are essential factors for effective wound care. Accurate ply count information ensures that healthcare providers select the most suitable dressing for each patient's needs.

## We minus the middlemen

**Others:** With multiple intermediaries involved in the supply-chain, products may take longer to reach the customer. Delays can occur at each stage of the process from manufacturing to distribution, resulting in longer lead times and slower responses to customer demand. Extended supply-chains often lead to higher transportation inventory and hidden costs.

**NIMBUS:** Cutting out middlemen such as retailers and wholesalers can lead to lower prices for healthcare buyers. By eliminating markups at each stage of the distribution chain, products can be offered at a more competitive price point. Direct delivery from our manufacturer can result in quicker shipping times since products do not need to pass through multiple distribution centres or retail outlets, guaranteeing customer satisfaction.







# Our Products

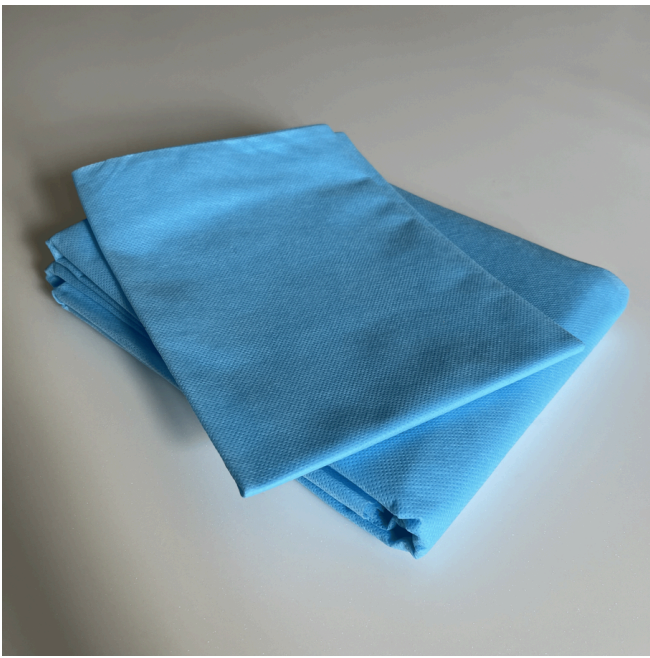


# NIMBUSPrevent Pet Pads



Product Codes	Dimensions
PP3609050S	45cm x 33cm
PP3609050M	60cm x 45cm
PP3609050L	60cm x 60cm
PP3609050XL	60cm x 90cm

# NIMBUSGuard Disposable Bed Sheets with Pillow Case



Product Codes	Bed Sheet Size	Pillow Case Size
DBS00406390	1.6m x 2.29m	51cm x 69cm

Sterilisation:  
None

# NIMBUSPro Surgical Gowns



Product Codes	Sizes
DDG0040L	L
DDG0040XL	XL
DDG0040XXL	XXL

Sterilisation:  
None

# NIMBUSClean Gauze Swabs



**Mesh Construction:**  
19 x 15

**Yarn Count:**  
40S/40S

**X-Ray Thread:**  
Without

**Sterilisation:**  
Sterile & Non-Sterile  
Options Available

Product Codes	Sizes	Thickness
GS19154428	5cm x 5cm	8 ply
GS19154438	7.5cm x 7.5cm	8 ply
GS19154448	10cm x 10cm	8 ply
GS191544212	5cm x 5cm	12 ply
GS191544312	7.5cm x 7.5cm	12 ply
GS191544412	10cm x 10cm	12 ply
GS191544416	10cm x 10cm	16 ply
GS191544432	10cm x 10cm	32 ply

# NIMBUSClean Gauze Swabs (with X-Ray Thread)



**Mesh Construction:**  
19 x 15

**Yarn Count:**  
40S/40S

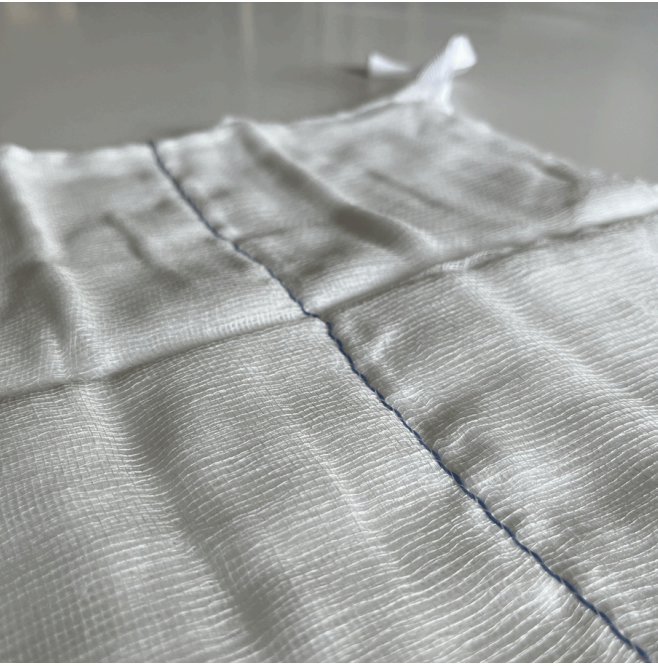
**X-Ray Thread:**  
With

**Sterilisation:**  
Sterile & Non-Sterile  
Options Available

Product Codes	Sizes	Thickness
GS19154428 XD	5cm x 5cm	8 ply
GS19154438 XD	7.5cm x 7.5cm	8 ply
GS19154448 XD	10cm x 10cm	8 ply
GS191544212 XD	5cm x 5cm	12 ply
GS191544312 XD	7.5cm x 7.5cm	12 ply
GS191544412 XD	10cm x 10cm	12 ply
GS191544416 XD	10cm x 10cm	16 ply
GS19154441416 XD	11cm x 36cm	16 ply
GS191544432 XD	10cm x 10cm	32 ply



# NIMBUSUltra Lab Sponges / Abdominal Pads



**Mesh Construction:**  
19 x 15

**Yarn Count:**  
40S/40S

**X-Ray Thread:**  
With

**Sterilisation:**  
Yes

Product Codes	Sizes	Thickness
LS1915442208 XD	30cm x 30cm	8 ply
LS1915447708 XD	45cm x 45cm	8 ply
LS1915448812 XD	22.5cm x 22.5cm	12 ply
LS1915442212 XD	30cm x 30cm	12 ply
LS1915447712 XD	45cm x 45cm	12 ply

# NIMBUSAbsorb Absorbent Gauze Rolls



Product Codes	Sizes	Thickness
AG191544100	90cm x 100 yards	4 ply
<b>Mesh Construction:</b> 19 x 15	<b>Sterilisation:</b> None	
<b>Yarn Count:</b> 40S/40S		

# NIMBUSSoft Absorbent Cotton Wool



Product Codes	Weight
CWN000050	50g Net
CWN000100	100g Net
CWN000300	300g Net
CWN000500	500g Net



# NIMBUSWrap Rolled Bandages



**Mesh Construction:**  
19 x 15

**Yarn Count:**  
40S/40S

**Sterilisation:**  
None

Product Codes	Sizes
RB19154425	5cm x 5 yards
RB19154435	7.5cm x 5 yards
RB19154445	10cm x 5 yards
RB19154465	15cm x 5 yards

# NIMBUSFlex Elastic Crepe Bandages



**Sterilisation:**  
None

Product Codes	Sizes
CB00060400	6cm x 4m
CB00100400	10cm x 4m
CB00150400	15cm x 4m

# NIMBUSSecure Compression Bandages



**Sterilisation:**  
None

Product Codes	Sizes
CB65100400	10cm x 4m (before stretching)



# NIMBUSShield Gamgee Rolls



**Mesh Construction:**  
19 x 15

**Yarn Count:**  
40S/40S

Product Codes	Sizes
GR19151030	10cm x 3m
GR19151530	15cm x 3m

**Sterilisation:**  
None

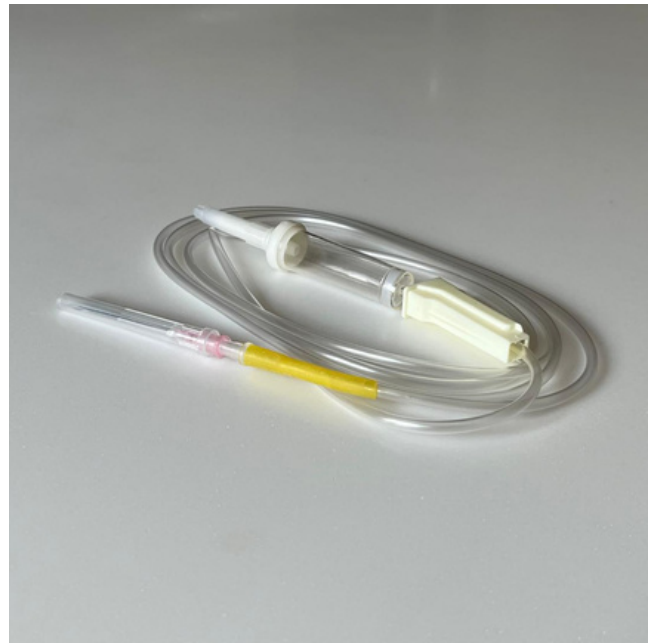
# NIMBUSFlow Vented IV Sets



**Sterilisation:**  
EO Sterilised

Product Codes	PVC Size	Needle Sizes
IFS0020V21	1500mm x 3mm	21 G
IFS0020V23	1500mm x 3mm	23 G

# NIMBUSFlow Non-Vented IV Sets



**Sterilisation:**  
EO Sterilised

Product Codes	PVC Size	Needle Sizes
IFS002NV21	1500mm x 3mm	21 G
IFS002NV23	1500mm x 3mm	23 G



# Sustainability

## **At NIMBUS, sustainability is ingrained in all that we do**

### **Renewable Raw Materials**

We prioritise the use of renewable raw materials, such as responsibly sourced cotton, in our medical dressings. By choosing renewable resources, we reduce our environmental impact and promote long-term sustainability.

### **Low Carbon Footprint Supply-Chain**

Our commitment to sustainability extends throughout our entire supply-chain. Our direct manufacturer-to-customer approach helps to minimise environmental impact as we remove the need for additional logistics.

### **Energy Efficiency**

We continuously invest in energy-efficient technologies and processes to not only reduce costs but also lower our carbon emissions, contributing to a cleaner environment.

### **Waste Reduction**

We are dedicated to minimising waste generation across our operations. Through initiatives such as recycling, waste reduction programs, and efficient resource utilisation, we aim to minimise landfill waste and promote a circular economy.

### **Responsible Packaging**

We carefully select packaging materials that are recyclable and environmentally friendly. By using sustainable packaging options and minimising packaging waste, we reduce our carbon footprint and minimise environmental harm.





**MGL ASSOCIATES LTD T/A NIMBUS**

Ideas House, 18 Eastwood Close, London, United Kingdom, E18 1BY

Website: [www.nimbushealth.co.uk](http://www.nimbushealth.co.uk)

Phone: 020 805 07570