

# FACE RECOGNIZE & TEMPERATURE MEASUREMENT PANEL

EASI introduce FR temperature measurement which integrate face recognition with thermal temperature monitoring module. It records information, scan face, and read temperature of users without touching surface of users. Then, the data will be recorded in back-end system. Real time warning alert if users was detected unmask or under high temperature. In addition, the device open for integration to visitor management. This FR solution brings more advantages as compared to manual temperature scanning.

## 7 STEP TO USE

### STEP 01

Face Recognition access control system collect information of users (QR code, IC, finger print, etc).



User face to Face Recognition device to take face recognition and temperature scan.

### STEP 02

### STEP 03

Data will be recorded in back-end system.



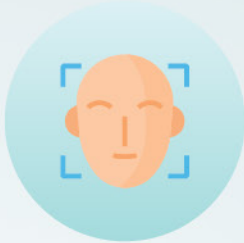
Real time warning alert if detect unmask and out of range temperature.

### STEP 04

## 7 ADVANTAGES OF FACE RECOGNITION TEMPERATURE MEASUREMENT

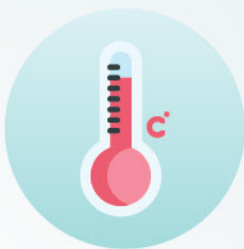
- Save time to collect information from visitors.
- Trace back visitors record in database.
- Reduce human error to key in data.
- System will alert when temperature of visitors out of range and face unmask.
- Integrate to access and exit control system without human control.

## CORE FUNCTION



### **Accurate Face Recognition**

- Recognize face accurately in time <500ms. Support 22400 face comparison library and 100,000 face recognition records.



### **Contactless Temperature Measurement**

- High precision temperature measure-range 30-45 °C ( $\pm 0.5^{\circ}\text{C}$ ) without touch-surface of users.



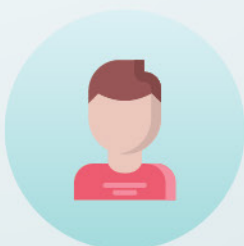
### **Tracking System**

- Modules that allow to auto register information of users through fingerprint, scan QR code, IC card reading, etc.
- Data will be recorded in back-end system.



### **Intelligence Alert**

- Provide real-time warning if detect unmasked personnel & high temperature Alert abnormal temperature in voice messages, lightning, etc.



### **Attendance & Visitor Manage-**

- FR system open to integrate to visitor management such as turnstiles at access and exit.

## SPECIFICATION

### Hardware

Chipset : Hi3516DV300  
System : Linux Operation System  
RAM : 16G EMMC  
Image Sensor : 1/2.7" CMOS  
Lens : 4.5mm

### Temperature

Range : 30 - 45 (°C)  
Accuracy :  $\pm 0.03$  (°C) Indoor  
Best Distance :  $\leq 0.5m$   
Response Time :  $< 300ms$

### Camera Parameters

Camera : Binocular Camera Supports Live Detection  
Effective Pixel : 2Mega Pixel, 1920\*1080  
Min. Lux : Color 0.01Lux @F1.2(ICR);  
B/W 0.001Lux @F1.2  
SNR :  $\geq 50db$  (AGC OFF)  
WDR :  $\geq 80db$

### Interface

Internet Interface : RJ45 10M / 100M Ethernet  
Weigand Port : Support Input / Output 26 & 34  
Alarm Output : 1 Channel Relay Output  
USB Port : 1 USB Port  
( Can Be Connected To ID Identifier)


### Face Recognition

Height : 1.2 - 2.2M, Angle Adjustable  
Distance : 0.5 - 3 Meters  
View Angle : Vertical  $\pm 30$  Degree  
Reco. Time :  $< 500ms$   
Function : Support 22400 Faces Database  
& 100000 Records

### General

Power Input : DC 12V/3A  
Power Consumption : 20W (Max)  
Working Temperature : 10°C ~ +50°C  
Humidity : 5 ~ 90%, No Condense  
Dimension : 123.5(W)\*45.5(H)\*266(L)mm  
Weight : 1.9kg


## CONTACT US

Enterprise Advanced System Intelligence Pte . Ltd 

Blk 623 Aljunied Road #07-01,  
Aljunied Industrial Complex,  
Singapore 389835

Main Line : +65 6547 4401

Hot Line : +65 6100 2911

EASI (M) Sdn Bhd 

No.1, Jalan SS 22/19, Damansara Jaya, 47400  
Petaling Jaya, Selangor Darul Ehsan, Malaysia.  
(A Subsidiary of PPB Group Berhad)

Main Line : +603 7806 8988

Hot Line : +603 7713 7911

Email : [easisales@easipos.com](mailto:easisales@easipos.com) Web : [www.easipos.com](http://www.easipos.com)