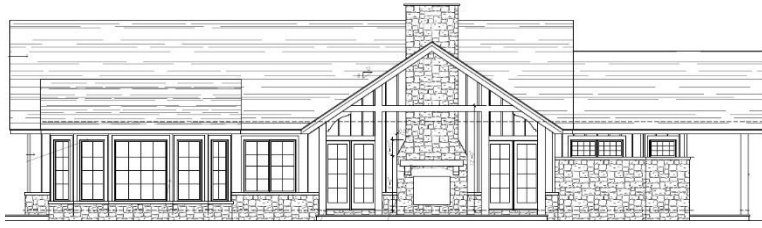




Jude Ranch General Rules

- 1. Unless staying at the guesthouse under a reservation, all guests must be accompanied by a Jude Ranch member at all times – no exceptions.***
- 2. Members are financially responsible for any damage to Ranch property caused by themselves or guests.***
- 3. Fireworks are not permitted at any time.***
- 4. Guests are not permitted to discharge firearms unless a member is physically present within 5'***
- 5. Fires are only permitted within protective metal rings or fire pits and must be fully extinguished prior to leaving ranch property.***
- 6. Members are responsible for removing all trash from ranch property and depositing in dumpster at main entrance. Never leave trash in bags where animals have access.***
- 7. Automobiles must stay on roads and designated trails at all times.***
- 8. ATV & motorcycle use is not permitted except for retrieval of game.***
- 9. Please check reservation status online prior to visiting ranch property. Although reservations of the lodge and guesthouse do not provide exclusive use of the entire ranch, common courtesy would suggest other members respect the privacy of those with reservations. Any lodge reservation includes exclusive use of the spring-lake area.***
- 10. Please refer to specific rules for the lodge, guesthouse, hunting & fishing.***



Jude Ranch Lodge Rules

- 1. The member who reserves the lodge for any event must be present at the function.***
- 2. Members are financially responsible for any damage to Ranch property caused by themselves or guests.***
- 3. Members are responsible for restoring the appearance and organization of furniture back to the original location prior to their reservation.***
- 4. Folding chairs and tables should be cleaned, stacked and returned to storage area.***
- 5. Table cloths should be striped and placed on bar area for cleaning staff.***
- 6. Members are responsible for removing all trash from ranch property and depositing in dumpster at main entrance. Never leave trash in bags where animals have access.***
- 7. All dishes and silverware should be cleaned and placed in dishwasher. Washing cycle should be started prior to leaving. Excess dishes should be rinsed and placed on counter.***
- 8. Please remove all food and perishable items. Do not leave leftover food or condiments in the refrigerator.***
- 9. There are two (2) thermostats in the lodge. Please set both to 77 degrees (Summer) or 60 degrees (Winter) prior to leaving.***
- 10. Lock all doors except main front prior to leaving. This includes securing each stationary door by pulling upward on the handle.***
- 11. Turn off all lights prior to leaving.***
- 12. Set alarm prior to leaving (system will not arm unless front door is fully shut)***
- 13. All members agree to hold Jude Ranch Inc. harmless and indemnify Jude Ranch Inc. for any losses incurred by members, extended family or guests.***

Jude Ranch Guesthouse Rules

- 1. Members may reserve the guesthouse for any number of days during the week throughout the year, but may only reserve two (2) weekends in one (1) calendar year.***
- 2. Weekend dates not reserved by Friday of that week may be used by Members without reducing their weekend reservations for the rest of the year.***
- 3. The rental rate for the guesthouse is \$75 when a member is present and physically spends the night and \$100 when a member rents it for a guest.***
- 4. The maximum occupancy number for unaccompanied guests is six (6).***
- 5. Members are financially responsible for any damage to Ranch property caused by themselves or guests.***
- 6. Members are responsible for removing all trash from ranch property and depositing in dumpster at main entrance. Never leave trash in bags where animals have access.***
- 7. All dishes and silverware should be cleaned and placed in dishwasher. Washing cycle should be started prior to leaving. Excess dishes should be rinsed and placed on counter.***
- 8. Please remove all food and perishable items. Do not leave leftover food or condiments in the refrigerator.***
- 9. Please set thermostat to 77 degrees (Summer) or 60 degrees (Winter) prior to leaving.***
- 10. Lock all doors except main front prior to leaving.***
- 11. Turn off all lights prior to leaving.***
- 12. All members agree to hold Jude Ranch Inc. harmless and indemnify Jude Ranch Inc. for any losses incurred by members, extended family or guests.***



Jude Ranch Fishing Rules

Trout

- *Use of any hook other than a barbless single hook is not allowed.
- *Trout are extremely fragile – Please handle with the utmost care
- *Trout are very expensive (\$10 each) and a limited resource.
- *Please limit the number each **member** keeps to what they can eat in one (1) meal.

Guests are limited to one (1) trout per guest, per stay. This includes multi-day reservations

Bass

- *Bass are hearty fish and can be pursued with any bait configuration.
- *Although hearty, our population is average. Members and their guests should limit their catch to what they can eat in a single meal. Limit renews each day during a multi-stay reservation.

Catfish

- *Catfish can be pursued with any bait configuration.
- *Members and their guests should limit their catch to what they can eat in a single meal.
- *Limit renews each day during a multi-stay reservation.

Bluegill – Sunfish

- *No limits

Safety

There is a great amount of risk associated with bodies of water, boats and docks – *especially concerning children*. All members agree to hold Jude Ranch Inc. harmless and indemnify Jude Ranch Inc. for any losses incurred by members, extended family or guests.



Jude Ranch Hunting Rules

Spring Turkey Season

- Bag limit - Two (2) male turkey per membership
- First 7 days limited to members and member's children 26 years of age & under
- Remainder of season open to guests
- Each membership limited to one (1) harvested guest turkey
- Harvested guest turkeys count towards member's two (2) turkey limit
- All guests must be accompanied by member while hunting

Fall Turkey Season

- Bag limit - Two (2) turkey of either sex per membership
- No guest privileges permitted

Deer Season

- Bag Limit - Two (2) Bucks per membership, button bucks count
- First half of archery season & all firearms season limited exclusively to members & member's children 26 years of age & under
- Remainder of season open to guests
- Each membership limited to one (1) harvested guest buck, button bucks count
- Doe bag limit based on annual census, but usually very liberal
- All guests must be accompanied by member while hunting
- Members must contribute to the annual hunting fund no later than September 15th in order to hunt themselves or invite a guest to hunt. Hunting fund contribution only required for Fall deer hunting

Guests

All guests must be escorted (close proximity) by an active adult member. Guests are never allowed to hunt or discharge a firearm unless in the company of an adult member. Hunting and related activities can be dangerous. All members agree to hold Jude Ranch Inc. harmless and indemnify Jude Ranch Inc. for any losses incurred by members, extended family or guests.

*Bag limits subject to change based on herd population, prevailing regional trends and/or disease.