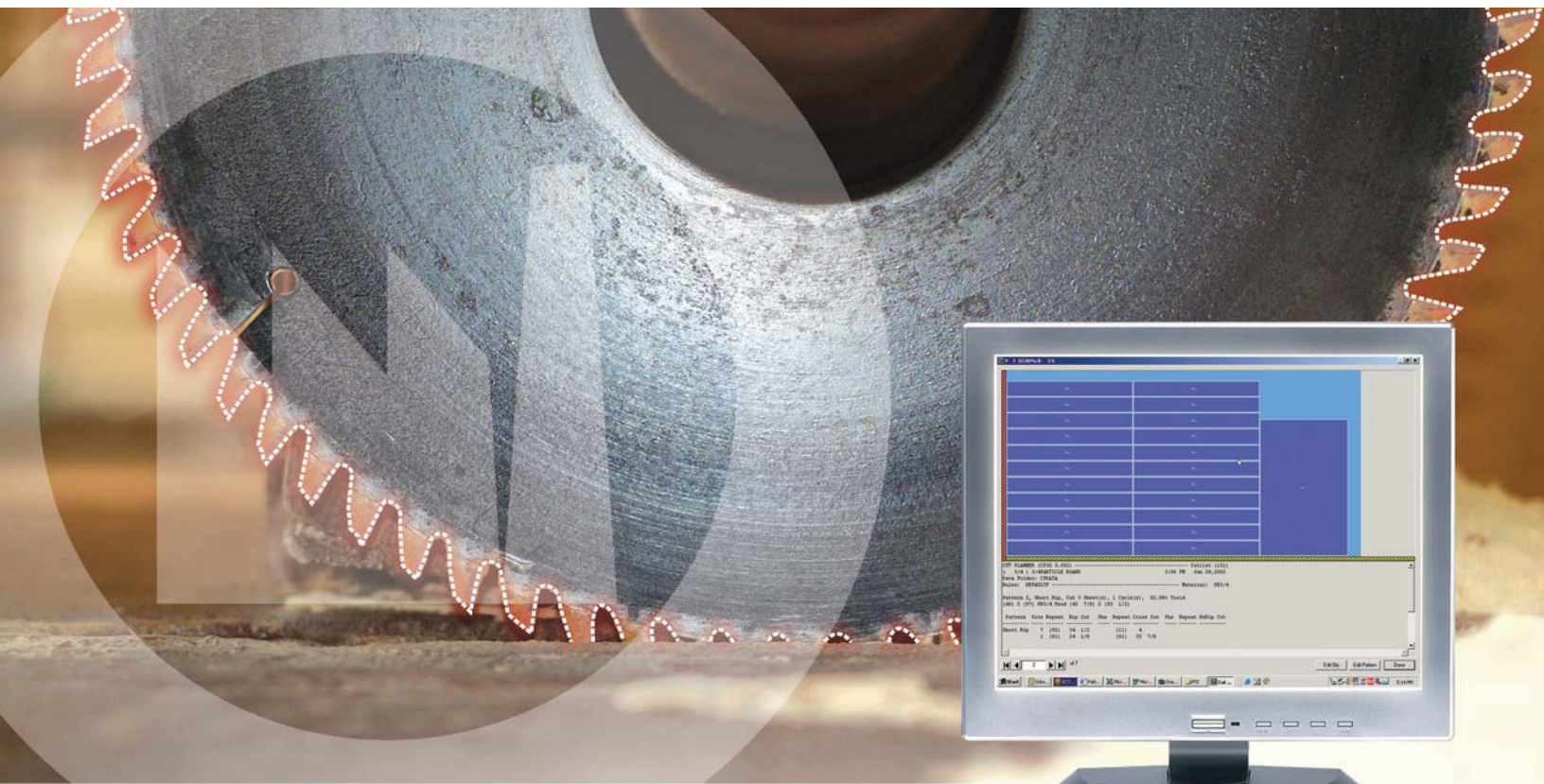


20-20 CUT PLANNER

Optimized Cutting Patterns



20-20 Cut Planner is an accurate and efficient system that optimizes the cutting of parts from sheets -- saving time and material while reducing errors and waste.

MANUFACTURING 

20-20 Cut Planner comes in 3 models designed to fit your requirements—today and tomorrow.

CUT PLANNER 10

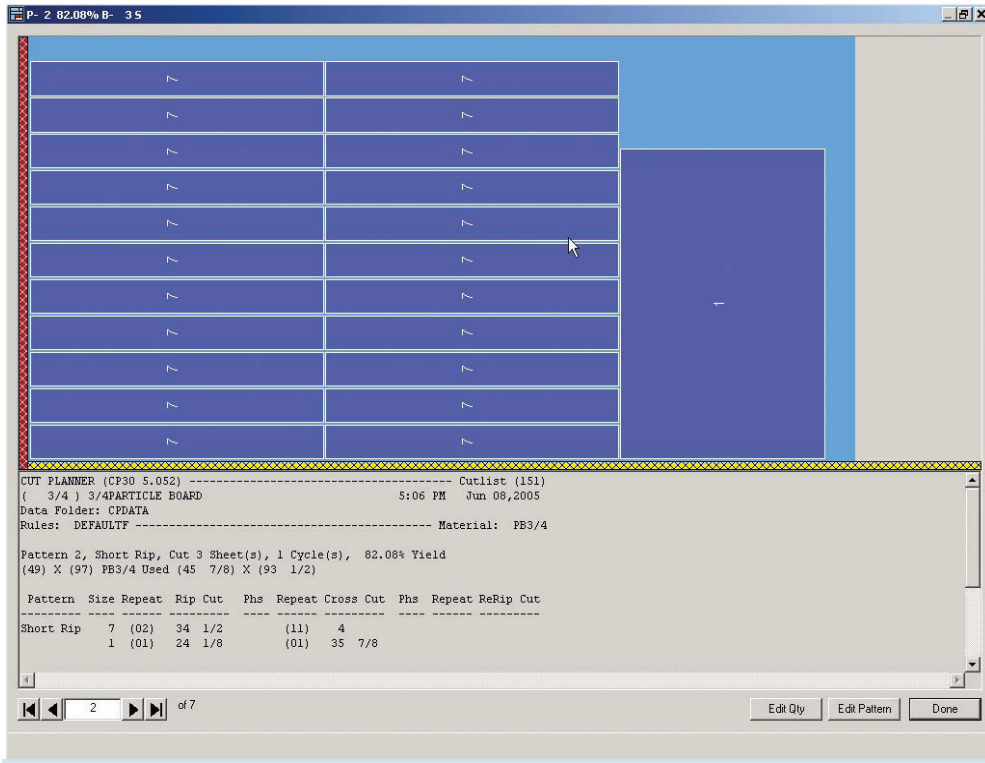
Basic optimization for non-CNC applications

CUT PLANNER 20

Includes all the features of Model 10 plus output for CNC saws and features for CNC saw applications.

CUT PLANNER 30

Includes all the features of Model 10 and 20 plus features for high volume cutting, and control for multi-axis CNC saws. Also includes pattern edit capability and grain matching.



Optimize sheet size and layout for optimal accuracy, efficiency and speed.

FEATURES

CNC ready—link electronically to CNC controlled saws via a CNC connection program that translates and transmits Cut Planner's instructions to the saw's controller.

Unlimited number of parts in a list—use with spreadsheet or dialog-based parts entry.

Repetitive Jobs—Combine parts lists and add quantity multipliers for repeating previous jobs

Make Layouts for saws or routers (with optional modules).

Automatic selection of multiple sheet sizes using the fastest optimizer in the market.

Goal Seek function for automatic selection of best cutting layout rules easy user friendly parts entry or automatic entry from a computer file.

Simple to use sheet inventory filing system.

Ability to recycle drop.

Reporting of inventory reorder.

User definable rules control the way Cut Planner optimizes to suit your needs.

Save sets of rules or customize for one time use.

Output industry standard files and reports.

Available in a Network version.

Easy part list import from spreadsheets and databases.

Integrates with other 20-20 Pattern Systems products.

20-20 Cut-Planner provides the best optimizer for panel processing. Providing 1000 unique cut sizes, supporting an unlimited number of parts, and a selection of 50 different sheet sizes, optimization of yield is a reality. The ability to match grain direction, save spreadsheet file import maps, and generation of customer developed machining rules results in an industry leading solution.

20-20 Cut Planner delivers profits by reducing labor and material costs and reduces the time spent in layout optimized cutting patterns.

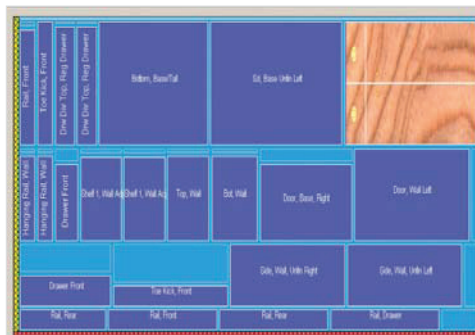
REPORTING

	Rip	Cross Cuts	Third Phase	
			On-Line	Off-Line
A. Cycle Prep Time (sec)	0	0	5	0
B. Cycle Overhead (sec)	120	60	30	0
C. Post-cut Clearance (ft/m)	0	0	1	0

	On-Line	Off-Line
Saw Speed (ft or m per min)	328.02	4.98
Set-up Time (sec)	0	0
Head cut set-up Time (sec)	45	0
Operating Cost (dollars per hr)	10	10

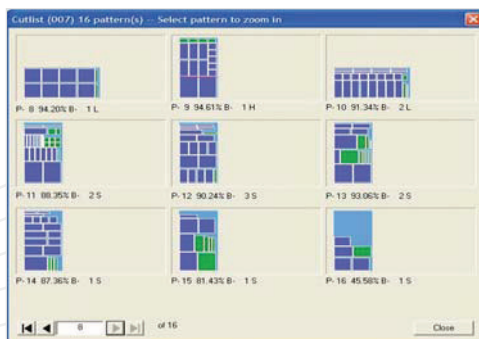
➤ Setup saw time and labor costs for reports.

MATCH GRAIN DIRECTION



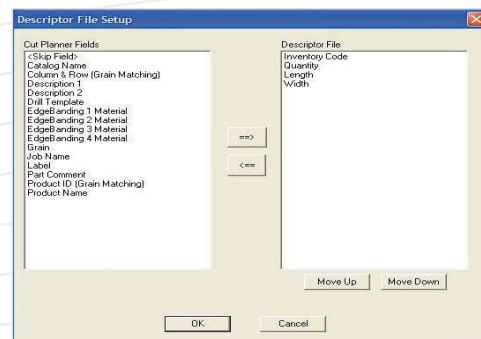
➤ Match layout to direction of wood grain.

MULTIPLE PATTERN VIEW



➤ Quick review of scheduled cutting patterns.

FLEXIBLE FILE IMPORT



➤ Easily map and import spreadsheet data.

BENEFITS

SAVE TIME AND MONEY

- Precisely determine how long it will take to cut a job and eliminate saw operator error.
- Eliminate the need and the time to figure out patterns manually.
- Know in advance the number of sheets to order.
- Determine optimal sheet size to make better patterns for faster cutting and better use of materials.
- Realize the maximum efficiency of your CNC panel saw.

SYSTEM RECOMMENDATIONS

20-20 CUT PLANNER V6.0

PROCESSOR

Pentium 2.6 GHz or higher

OPERATING SYSTEM

All Windows Platforms

MEMORY

512 MB

HARD DRIVE

1 GB + Hard Disk Space