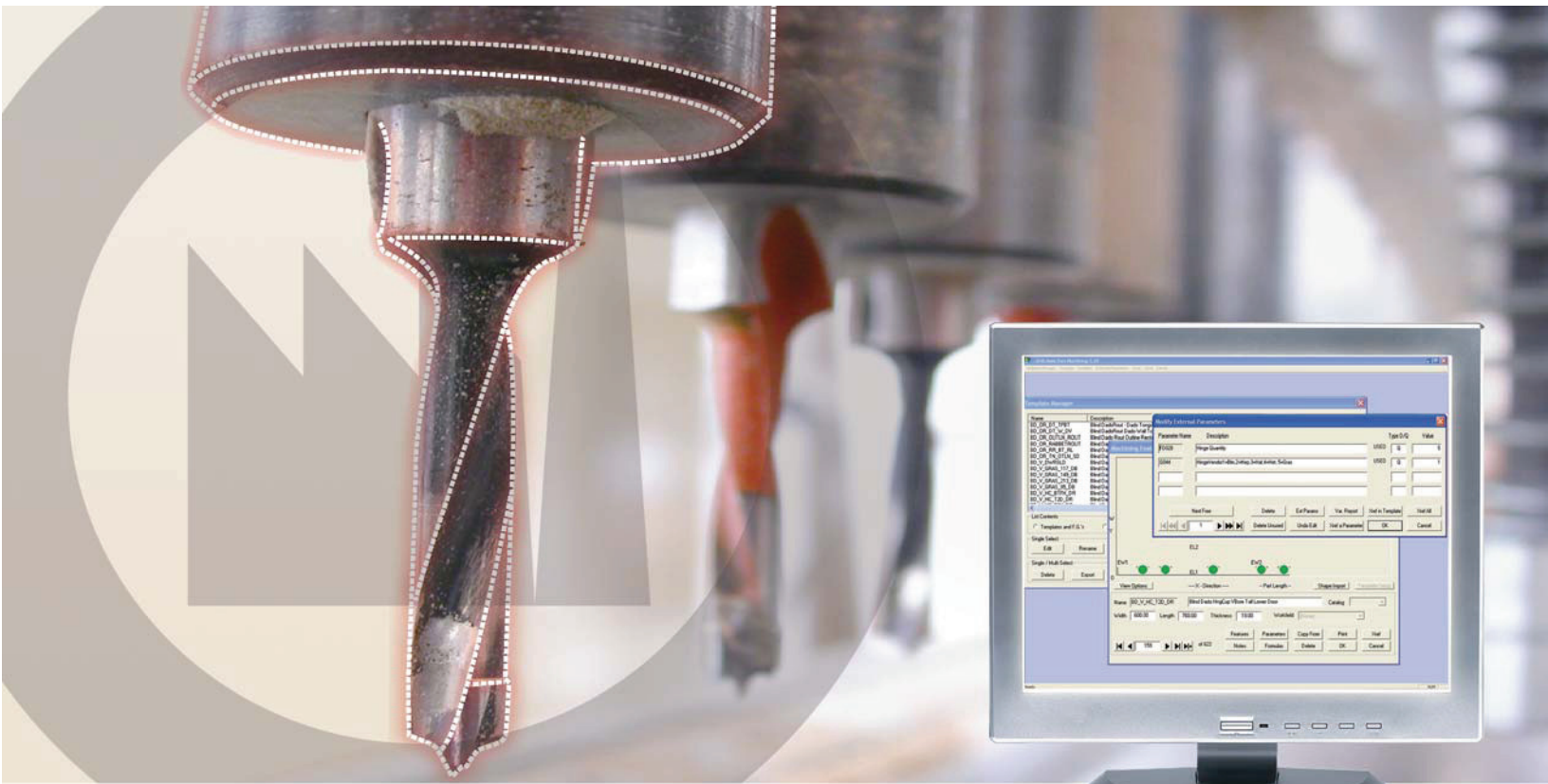


# 20-20 DRILL-MATE

Instantaneous part machining  
for custom sized parts



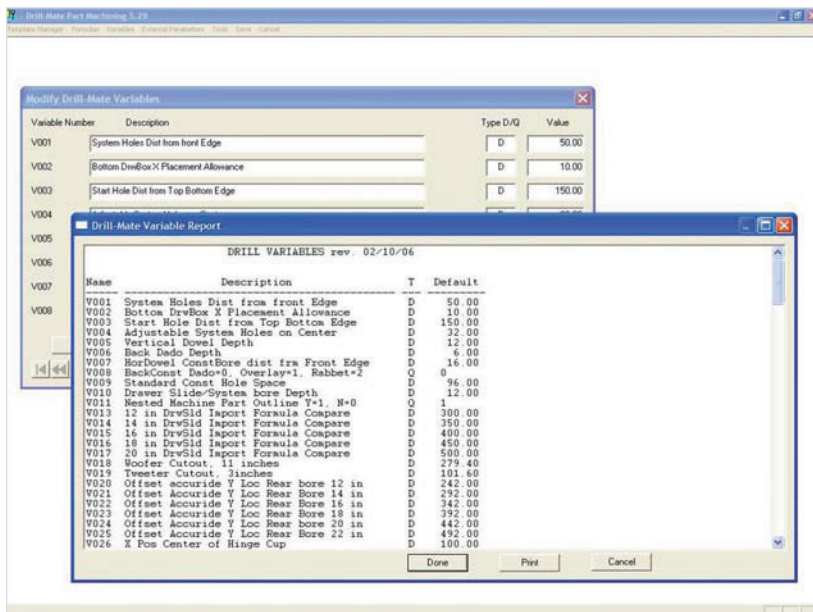
20-20 Drill-Mate automatically creates part geometry, maintaining and controlling the flow of drilling programs to Universal Machining Centers.

MANUFACTURING

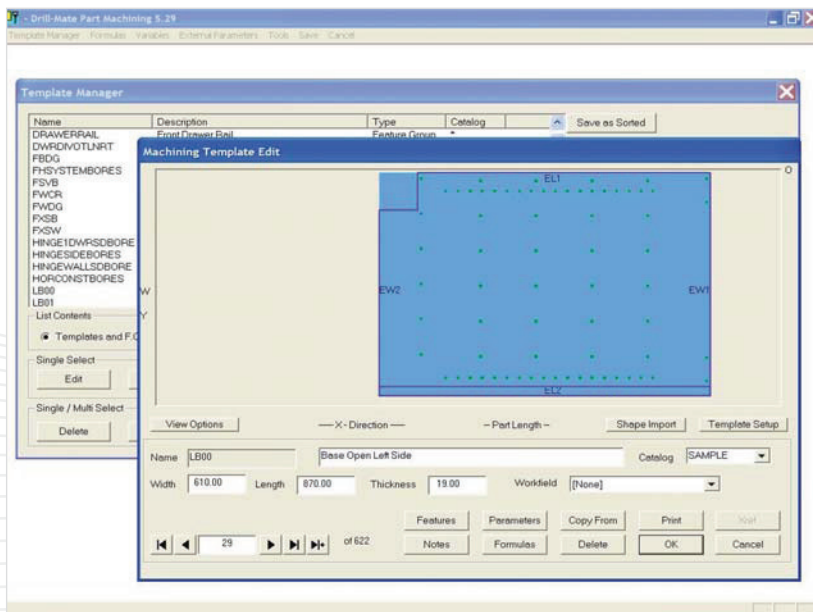


20-20 Drill-Mate quickly and automatically creates part geometry files, and maintains and controls the flow of drilling programs to CNC Machining Centers. 20-20 Drill-Mate reduces errors and saves time and money.

20-20 Drill-Mate can deliver virtually hundreds of properly layered CNC machining files within seconds, directly to the CAM of the machine for individual part machining or CAM nesting. Since it interfaces to the 20-20 Product Planner BOM, all the parts are known to each other and are machined to fit together automatically.



➤ Easy to modify machining variables to achieve specific manufacturing requirements.



➤ Modify and visually confirm machining operations and feature groups.

## FEATURES

### FEATURE GROUPS

Create groups of multiple operations that can be shared and reused across many parts. Common operations such as line bores, toe notch and multiple pass rout dados are easily handled. Feature groups are simple to set up.

### NESTED BASED MANUFACTURING

Easily configured for Nested Based Manufacturing (NBM), 20-20 Drill-Mate automatically assigns the part outline and makes the necessary edge banding adjustments. Drill-Mate offers flexible capability for both Cell and Nest outputs and can produce these outputs for multiple CAM systems simultaneously.

### CREATING PROGRAMS IS AUTOMATIC

Part geometry and parameters are automatically applied to parts as they are released to manufacturing. The part list can be automatically downloaded from Product Planner or manually entered.

### MULTIPLE MACHINE OUTPUTS

Automatically and simultaneously, create up to six different part file outputs for most available CAM systems utilizing 20-20 Drill-Mate's Machine Map Technology (MMT). Based upon a predefined map, the export data supports unique file types (DXF, ASCII, CID3, etc.), user defined layering, tool names, operational support, barcode setup, and file paths.

### BOTTOM SIDE MACHINING

Supports bottom side operations.

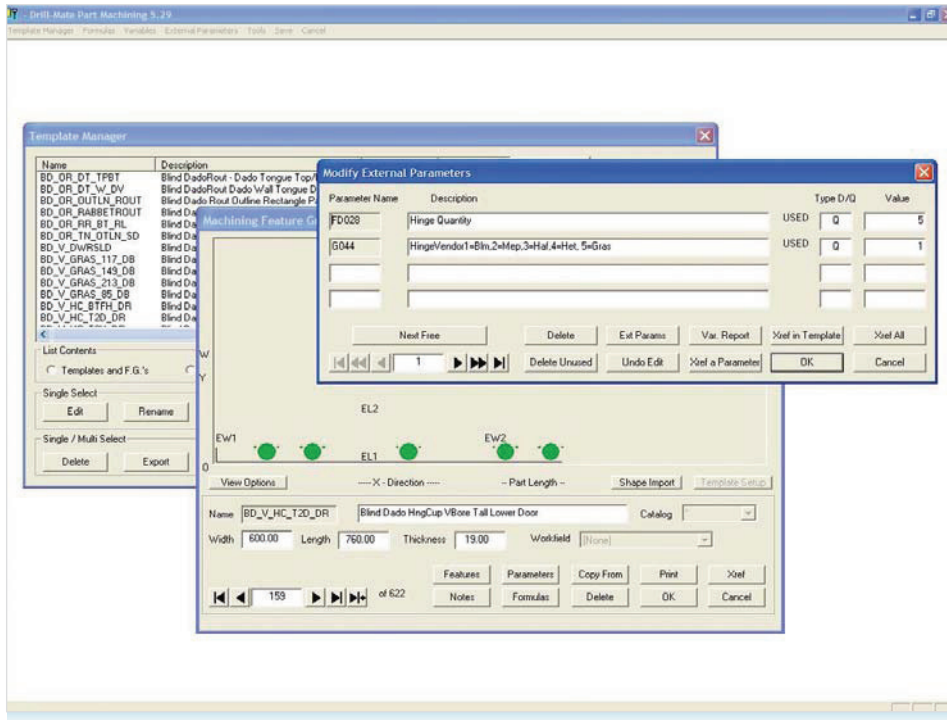
### HORIZONTAL BORING

Supports many popular CNC Horizontal boring machines by directly making the G code (no intermediate step required).

### BARCODE READING

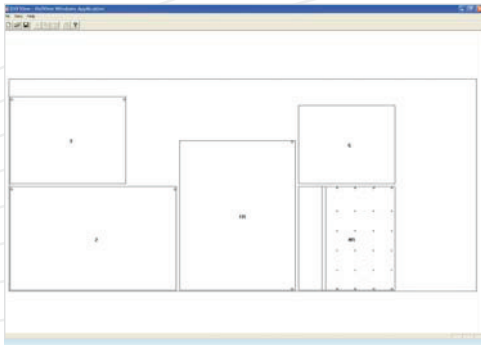
20-20 Drill-Mate will automatically create the bar code information necessary to support reading the bar-coded label at the CNC center.

20-20 Drill-Mate uses a parametric (rules-based) database. An extensive library of machining templates covering most options for cabinets is provided with 20-20 Drill-Mate and in addition, customers can easily change or create new machining templates.



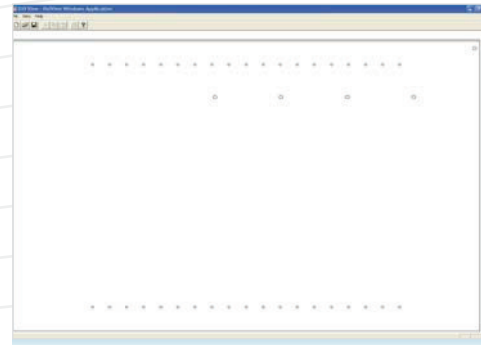
Define and modify multiple machining operations as a parametric feature group.

## DATA TO NESTING OPERATIONS



Easily pass multiple machining files to nesting CAM software.

## SINGLE PARTS FOR POINT-TO-POINT MACHINES



Seamlessly deliver individual part geometry and machining files to point-to-point machines.

## BENEFITS

### SAVES TIME

Eliminates spending valuable time creating or modifying machine programs on the shop floor. Every time there is a manual adjustment on the shop floor there is a chance of an error.

### SET UP TIME IS ELIMINATED

Working with a labeling system, 20-20 Drill-Mate can create a barcode that uniquely identifies how each part is to be machined. Reading a barcode label eliminates the set up time.

### ACCURATE

Hundreds of programs can be created in minutes. The part geometry is always 100% accurate even when width, length, thickness and other variables change.

### SEAMLESS INTEGRATION

20-20 Drill-Mate seamlessly integrates with 20-20 Product Planner for even greater productivity. On-the-fly modifications are immediately reflected. Visually verify all machining in the Part Preview. Instantly see the machining update as dimensions or options change.

### WORKLOAD DISTRIBUTION

- Send all files to all machines to evenly distribute the workload.
- Isolate and segment certain operations and send them to specific machines.

## SYSTEM RECOMMENDATIONS

### 20-20 DRILL-MATE V5.3

#### PROCESSOR

Pentium 2.6 GHz or higher

#### OPERATING SYSTEM

All Windows Platforms

#### MEMORY

512 MB

#### HARD DRIVE

1 GB + Hard Disk Space