

20-20 QUIKTRAK

Label parts and products easily and automatically



20-20 QuikTrak is an easy to use labeling program to track and identify parts and products.

MANUFACTURING 

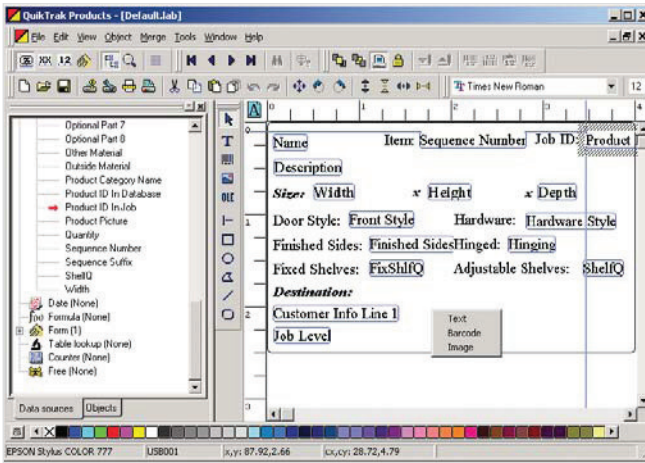
20-20 QuikTrak is an easy to operate program and comes preloaded with hundreds of brand name label templates including Moore and Avery. Select your label brand and style from the list and 20-20 QuikTrak sizes the label on-screen to match. Or, easily customize your own label by inputting the size of your custom labels. It supports all fonts, barcodes, multiple codes per label, and in any density or direction.

20-20 QuikTrak comes in 3 versions: QuikTrak Parts, QuikTrak Products and QuikTrak on Demand (parts). QuikTrak On Demand has all the great features of QuikTrak Parts plus touch screen or mouse initiated label printing right at the machine as well as on-line reports.

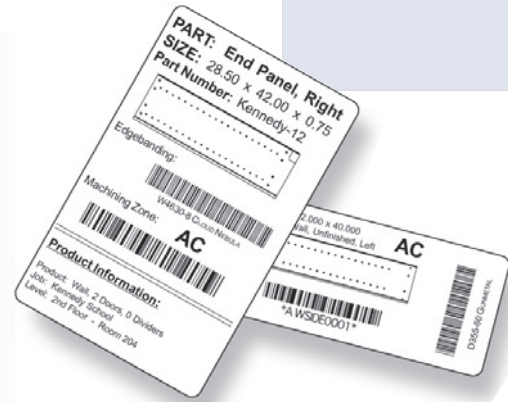
- QuikTrak Products
- QuikTrak Parts (at the desktop)
- QuikTrak On Demand (parts labels at the machine)

FEATURES

- Supports cell and nested base manufacturing
- Provides user defined formats and data fields
- Eliminate identification guesswork
- Provides vital part and product information
- Connects to all printers
- Offers multiple barcodes for part machining & tracking



➤ Easily configure labels from the QuikTrak software to meet the needs of your company.



QUIKTRAK PRODUCTS

QuikTrak Products connects to 20-20 Product Planner to make product labels. When designing labels, Product Planner data fields are available on a drop-down menu for easy label placement. Choose the field and

then choose the position, size, text or barcode. Product pictures can also be added to make easily identifiable shipping labels. Graphics like your company logo can also be added to personalize product labels.

All the data fields below can be placed on your QuikTrak Product labels including a product picture, and any field can be added to a barcode.

• customer information	• front style	• job name	• product name
• depth	• hardware style	• name	• product picture
• edgebanding color	• height	• optional parts	• product quantity
• edgebanding type	• hinging	• outside material	• quantity of shelves
• exposed left side	• inside material	• product catalog	• sequence number
• exposed right side	• job due date	• product comments	• width
• extra material	• job levels	• product description	

QUIKTRAK PARTS

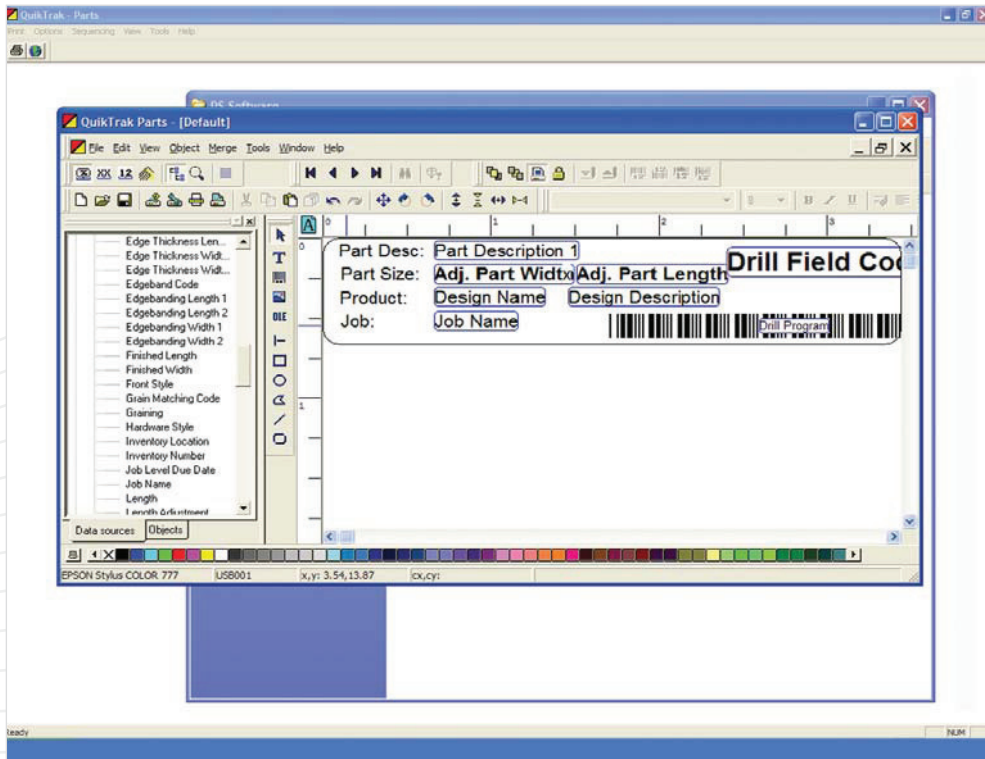
QuikTrak Parts connects to 20-20 Cut Planner to make part labels. When designing labels, Cut Planner's data fields are available in a drop-down menu for easy label placement. Just choose the field, then choose the position, size, text or barcode. Part pictures can also be added with edgebanding information from 20-20 Product Planner and Part Machining information from 20-20 Drill-Mate.

All the data fields below can be placed on your QuikTrak Parts labels including a part picture, and any printed field can also be printed in barcode.

- | | | |
|-------------------------|--------------------------|---|
| • current date | • material code | • product width, height & depth |
| • cutlist number | • part cost | • quantity produced part width & length |
| • cutlist title | • part description 1 & 2 | • quantity required |
| • drill program name | • part ID | • run date |
| • edgeband colors | • part number | • sequence number |
| • edgeband instructions | • part picture | • sheet stock code |
| • edgeband materials | • pattern number | • sheet stock description |
| • edging operations | • priority | • thickness |
| • graining | • product comments | • width adjustment |
| • inventory location | • product description | |
| • job name | • product ID | |
| • length adjustment | • product name | |

BENEFITS

- Eliminates missing parts and products
- Assures proper identification of all parts and products
- Automates the process of reading the CNC part program at the CNC machine
- Provides sight verification of part and product



Choose from 100s of fields to create custom labels.

SYSTEM RECOMMENDATIONS

20-20 QUIKTRAK V6.0

PROCESSOR

Pentium 2.6 GHz or higher

OPERATING SYSTEM

All Windows Platforms

MEMORY

512 MB

HARD DRIVE

1 GB + Hard Disk Space