



SABIE RIVER CROSSINGS

631-905-9375

john@sabierivercrossings.com

sabierivercrossings.com

Facebook: [@sabierivercrossings](https://www.facebook.com/sabierivercrossings)

Instagram: [@sabierivercrossing](https://www.instagram.com/sabierivercrossing)

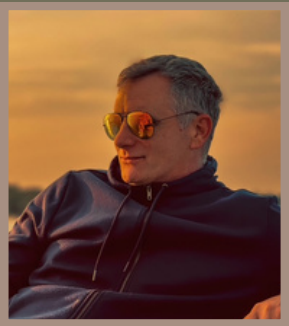


ABOUT US

Sabie River Crossings is a charter travel company that specializes in curated safari trips to Kruger National Park in South Africa. We provide all-inclusive, comfortable, and safe safari experiences for all guests. Standard trips last 14 days and are limited to groups of 12.

All trips explore the southern region of the expansive Kruger National Park. Spanning nearly 8,000 square miles (and growing every year), “The Kruger” is the most extensive safari area on the continent and is considered by many to be the jewel of Africa. With more large mammal species than any other African preserve (147), over 500 bird species, and stunning scenery, it’s an ideal destination for both first-time visitors and seasoned safari travelers.

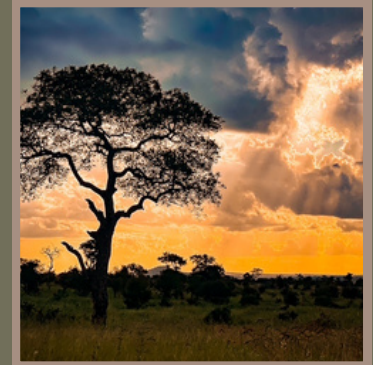
MEET THE FOUNDER



JOHN ALDRICH

A lifelong traveler, John has spent years living and working across Africa, gaining deep expertise in every facet of the safari experience. His unique ability to craft personalized adventures for all types of travelers makes him the ideal partner for planning a South African safari.

THE ULTIMATE SOUTH AFRICAN SAFARI EXPERIENCE





A TYPICAL DAY IN KRUGER

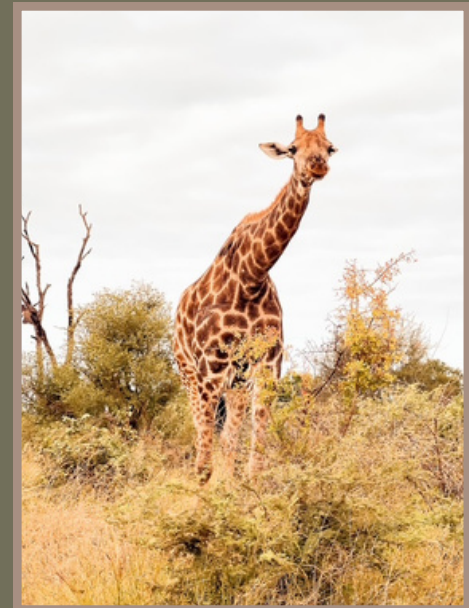
Each day features both a morning and afternoon game drive. Morning drives begin just after sunrise (5–6 AM) and return around 10 AM, followed by a relaxing midday break. Afternoon drives begin between 2–3 PM and continue until camp gates close (5–6 PM).

Safari vehicles are open-sided with a shaded roof, allowing unobstructed views and a full sensory experience of the bush. Depending on group preferences, full-day game drives can also be arranged.

OUR PARTENERS

HYLTON & MARGAUX LANGLEY

With over 26 years in tourism and hospitality, Hylton has planned and hosted hundreds of safaris. Margaux, born and raised in Africa, holds a BTech in Ecotourism Management (cum laude) and has extensive experience in guiding, conservation, and hospitality. Her work includes conducting Kruger's annual lion census, training guides, and hosting guests at world-renowned lodges. A qualified regional bird guide, she brings unmatched birding expertise to the team.





WALKS AND DRIVES

Camps operate within strict gate opening (30 minutes after sunrise) and closing (30 minutes before sunset) times. However, additional experiences like Sunrise Drives, Sunset Drives, Night Drives, and Bush Walks are available and allow for exceptional wildlife viewing, including elusive nocturnal species and large cat activity.

MOHOLOHOLO REHABILITATION CENTER

Visiting Moholoholo offers a unique opportunity to immerse yourself in the beauty and conservation efforts of South Africa's wildlife. As a renowned wildlife rehabilitation centre near Hoedspruit, Moholoholo is more than just a sanctuary—it's a place where you can actively participate in preserving nature. At the Moholoholo Wildlife Rehabilitation Centre, you'll witness firsthand the dedicated work involved in rescuing, rehabilitating, and releasing injured and orphaned animals back into the wild. Our guided educational tours provide deep insights into the challenges facing South African wildlife and the measures we're taking to address them. This experience not only educates but also inspires a profound connection between people and nature.





FOOD & DRINK

All meals are included and prepared by hand-picked chefs, either at private lodges or within the camps. Menus vary based on seasonal availability and guest preferences. Our chefs are experienced in preparing meals suited to Western palates, with flexibility for dietary needs.



ACCOMMODATIONS

Guests will enjoy comfortable lodging for the entirety of the trip. On arrival, we stay at the City Lodge Hotel, a modern, spacious hotel conveniently attached to Johannesburg's OR Tambo International Airport. The next morning, we take a short (35-minute) flight to the Greater Kruger area. The remainder of our trip is spent in and around the park, with wildlife viewing as the main focus.

Private bungalows are reserved for our clients. These include quality bedding, air-conditioning, full bathrooms, refrigerators, safes, and shaded porch areas. We also stay in well-appointed 'camps' inside Kruger and select private lodges for a diverse and enriching experience.



THE ORPEN

Ideally located on the doorstep of the Kruger National Park and Manyeleti Game Reserve, bordering both reserves less than 100m each entrance gate. Our modern safari lodge, famed for its good wildlife sightings and open-air bush boma dinners, uniquely offers classic Big5 safaris into the Kruger National Park and Manyeleti Game Reserve. With all the luxury of a modern 4-star safari experience, come and listen to the bush nightlife sounds while enjoying dinner under the African stars.



MOHLABETSI SAFARI LODGE

The Mohlabetsi Team invites you to experience the magic of Mohlabetsi. Situated in the vast Balule Private Game Reserve, which is part of the Greater Kruger National Park, this is Africa at its very best! A timeless place in the heart of wild Africa where nature rules and we are fascinated observers. A Safari is an ancient African word meaning a journey and this is the perfect venue for your travels into Big Game Country! Mohlabetsi is the local African name for a small stream or “spruit” that flows here.



CITY LODGE JOHANNESBURG

Our first stop is City Lodge Hotel at OR Tambo International Airport is your convenient sanctuary at Africa's busiest airport. With 365 comfortable rooms, they offer travelers a perfect place to unwind after a long journey. Located a short walk from the airport terminal. You'll enjoy a spacious lobby lounge, fast, free WiFi, and fitness room. The #Café hotel restaurant and bar, and take a dip in the outdoor swimming pool. You also have easy access to a wide variety of retailers and banking facilities within the airport building.



CAPE VULTURE LODGE

At Cape Vulture Lodge, the name means everything. The team is dedicated to the conservation of more than 728 breeding pairs of endangered Cape vultures nesting on the cliffs of the Northern Drakensberg Escarpment that towers above the property. The main lodge building has been designed to blend effortlessly into the environment and their innovative, eco-friendly tented suites are built on raised wooden decks for a true indoor/ outdoor vibe.



THE CAMPS

For part of our trip, we will be staying in bungalows in the one of four "camps" situated in the southern part of the Kruger Park. They are referred to as camps, but they are actually well-appointed tourist villages that provide a variety of amenities. All have different accommodations that range from rustic to extravagant, multiple restaurants, park ranger stations, coffee shops, information/reception desks, full housekeeping, banks/ATM, a post office, internet access, laundry services and convenience stores stocked with anything you may need on your trip.aa Based on availability, we will be utilizing Satara, Lower Sabie, Skukuza and Crocodile Bridge camps.



FREQUENTLY ASKED QUESTIONS

Should I be worried about Malaria?	Malaria risk in Kruger National Park is very low. Basic precautions like insect repellent and long sleeves are sufficient, and most travelers visit safely without taking malaria medication. Of course, the choice is ultimately up to each traveler to decide what level of precautions to take.
Will I be safe on safari?	Yes, our safaris are very safe. They are planned in partnerships with reputable guides and lodgings. Wildlife encounters are carefully managed, and safety protocols are well established to ensure guests can enjoy the experience without risk.
Do I need vaccinations?	Most travelers do not need vaccinations as South Africa is not a high-risk country for tropical diseases. There are no mandatory shots for entry into South Africa.
Why do you favor South Africa as opposed to the other African countries?	We choose South Africa, particularly Kruger National Park, because it offers world-class wildlife viewing, diverse landscapes, and excellent infrastructure and amenities. It is one of the best places in Africa to have a once-in-a-lifetime safari experience in a safe, accessible, and unforgettable setting.
Who will be accompanying us on the trip?	Groups are comprised of a maximum of 12 guests, and prices are based on double occupancy (there is a single supplement cost for solo travelers). Guests will be matched with other travelers to form complete groups. Private trips can be arranged by special request. Contact Sabie River Crossings for further details or questions.

FREQUENTLY ASKED QUESTIONS CONT...

Which converters do I need to charge my devices and use my hairdryer?	South Africa utilizes a few different outlet configurations. Expect to find Type D (commonly used on the Indian Sub-Continent with three round pins), Type M (similar to Type D, with larger pins) and Type N (which is the most common). A universal adapter can be purchased to accept all of these types. Hair dryers and other high wattage devices may not be functional in South Africa due to basic voltage limitations.
Do you need a visa to visit South Africa?	South Africa does not require visas for stays up to 30 days. However, all visitors should check their individual visa requirements and/or changes to this policy prior to our trip.
What animals will we see on safari?	Kruger National Park is home to hundreds of mammal species, as well as thousands of bird species. Commonly viewed animals include lion, leopard, cheetah, elephant, cape buffalo, giraffe, zebra, kudu, impala, hippopotamus, crocodile, rhinoceros, wildebeast, warthog, hyena, wild dog and many, many more.
How close do we get to the animals?	On safari, you can get surprisingly close to the animals, often only a few meters, especially in open safari vehicles. The animals are used to the vehicles and do not see them as a threat, allowing for incredible, safe viewing experiences.
What is the tipping protocol for safari trips?	As a best practice, tipping servers and cleaning staff is appreciated, but not mandatory. Tips should be considered for any staff members that make your experience more pleasurable and/or comfortable. Please note that tips are not expected for tour organizers or operators.

FREQUENTLY ASKED QUESTIONS CONT...

What type of currency is accepted in South Africa?	The national currency of South Africa is the Rand. Some guests prefer to exchange money prior to our trip (arranged through your local bank). If you wish to procure cash in South Africa, currency exchanges, ATMs and banks will be available throughout our trip. Credit cards/debit cards are also widely accepted, however, we have found recently that American Express is not accepted in some places.
How long is the flight?	It depends on where you originate. From the eastern US, presently, there are direct flights to Johannesburg/OR Tambo Airport from Newark International Airport, as well as Atlanta/Hartsfield Airport with flight times averaging around 15 hours
Will we have WiFi/phone service during our trip?	Under most circumstances, yes. All hotels and private lodges will have free WiFi networks, however only certain camps inside Kruger National Park provide network connections. Cell phone service can be sporadic throughout our trip, so if being connected is important to certain guests, it is advised that they set up an international package with their provider at home before our trip

THE AREA













SABIE RIVER CROSSINGS