

Kingdom International School



Student and Parent Guidebook



Table of Contents

Table of Contents	2
KIS Mission Statement	3
KIS Vision Statement	3
KIS Value Statement	3
KIS Leadership Statement	4
KIS Excellence Statement	4
Parent Advisory	4
KIS Admission Policy	5
Graduation Policy	5
STAAR EOC Exam	7
Diploma Eligibility	8
Early Graduation	8
Tuition Fee	9
Entrance Process Fee	9
English Proficiency Exam	9
Grading Policy	10
KIS Learning Management System	11
I. Canvas Instructional Guide	11
Digital Learning Framework	14
Personalized Learning and Teacher Responsibilities	15
Student Assessment Integrity Policy	16
Certified Professional Teachers	17
Contact	17



KIS Mission Statement

Kingdom International School (KIS) is dedicated to providing a Christian-centered education that is rooted in our core Mission, Vision, and Values. Our mission focuses on three primary pillars: Discipleship, which emphasizes the Christian principles of human existence and human-social rights; Gentium Ministry (One New Man), which underscores spiritual, emotional, and educational engagement from a Christian perspective; and Specialization, which empowers students through a Christian approach to academic and personal development.

These pillars are further substantiated by the values of Ownership, Multi-Ethnicism, and Professionalism in the academic sense, and Spiritual Unity, Globalization, and Empowerment in the affective domain. The embodiment of these principles is reflected in our teaching and learning processes, which are aligned with the Texas Essential Knowledge and Skills (TEKS) and guided by the Texas Education Agency (TEA).

KIS Vision Statement

KIS's vision is rooted in the Truth revealed through the Grace of the Lord, guiding each student, as His disciple, to serve the world. This vision integrates the Truth, the Way, and the Life, expressed through three dimensions: epistemological, methodological, and ontological. Epistemologically, it reflects the understanding of human knowledge, encompassing all creations and creatures in the universe and the dynamic relationships among them. Methodologically, it explores ways of existence within temporal and spatial contexts. Ontologically, it embraces the essence of education as the pursuit and love of Truth, combining human, social, and scientific knowledge with divine wisdom.

Illuminated by the Truth, guided by the Way, and inspired by Love, KIS provides a schooling process that upholds human dignity and fosters discipleship in Jesus Christ. Our mission is to shape students who live in obedience to His teachings and embody His love. Through a blended educational approach, including both virtual learning and onsite schooling, KIS is dedicated to offering equal opportunities for all students to achieve their full potential.

KIS Value Statement

At KIS, our foremost priority is fostering Unity and Collaboration, rooted in the principle of "the Vine and the Branches," which reflects the daily relationship between God and us. Guided by this spiritual foundation, KIS students are encouraged to lead lives that are Thankful, Joyful, and Prayerful, aligned with the Will of God in Christ Jesus.

Our values embody the Christian calling to be "the light and the salt of the earth," illuminated by our unity with Jesus Christ. This commitment inspires a focus on the Public Good and the



intrinsic Power of Human Dignity. It underscores that our strength and goodness arise not from our own efforts, but through the presence of Jesus Christ within our educational community.

This divine empowerment enables KIS students to enhance their knowledge and skills through Faith in God, culminating in the fulfillment of our ultimate calling: to Love one another.

KIS Leadership Statement

KIS's leadership is grounded in the unity of Jesus Christ and the diversity of roles and relationships within our community. Our leadership model reflects the Christian call to serve, obey Christ's teachings, and glorify His grace. We aim to cultivate leaders who demonstrate humility, fairness, and respect for all individuals, treating everyone with dignity. This approach fosters an inclusive, democratic environment where all members are empowered to lead with integrity and a commitment to equality.

KIS Excellence Statement

Excellence at KIS is rooted in Educative Love, where students are encouraged to become independent learners who engage deeply with the subjects they study and reflect on human life and society through the lens of the Great Commandment. All stakeholders—students, faculty, staff, and parents—actively support this learning process. Our commitment to excellence is grounded in the love of Jesus Christ and the call to love our neighbors, fostering self-education and collaboration as essential elements of growth and success.

Parent Advisory

Kingdom International School is a private digital learning institution. We are dedicated to the Christian nature of education through KIS' Missions, Visions, and Values. The vision of Kingdom International School is to provide a comprehensive educational facility that will accommodate a life-developing curriculum and graduate students who will live Christian values and follow Christ.

As a foreign language high school, KIS offers a hybrid educational model combining both offline and online learning experiences. Our curriculum aligns with the Texas Essential Knowledge and Skills (TEKS) standards and includes a broad range of subjects such as AP Biology, English, Chemistry, Geometry, Biology, Physics, U.S. History, U.S. Government, Algebra 1, Music Arts, and Hebrew.

For more information, please refer to the following linkS:
<https://kingdominternationalschool.com/academics>



KIS Admission Policy

Prospective families will have an educational consultation with the Head of School, and we encourage the presence of both parents if possible. To schedule the consultation, please submit an online application along with your availability. The purpose of this meeting is to determine if Kingdom International School is the right fit for your child.

If accepted, you will be able to submit required documentation, apply for financial aid, and arrange tuition payments through the application portal. Admission testing is required prior to acceptance. Grade placement for new students will be determined by the administration, taking into account assessment results and the interview. Admission decisions will be based on the applicant's adherence to admission standards, and parents will receive written notice once grade placement and admission are finalized.

Graduation Policy

Students are required to earn at least 25% of their total high school credits through KIS in order to qualify for a diploma from the institution. If a student earns fewer than 25% of their credits at KIS, they will be issued a transcript reflecting the credits they have earned. Upon graduating from KIS, students may enroll in either an American university or a university in Korea through early study abroad admission.

KIS follows the Texas Education Agency's Graduation Toolkit, specifically the Foundation High School Program. Students are required to complete 22 credits by the end of their term (Please refer to Table 1.1). Of these, 20 credits are from required courses, while students must complete at least 2 additional elective courses. A credit of "1" represents one full year (two semesters, 180 lessons), and a credit of "0.5" represents one semester (90 lessons).

KIS's curriculum is designed for all students to graduate with a **Distinguished Level of Achievement**. This includes 4 credits with Algebra II in math and 4 credits in science. Students who complete only 2 elective courses will graduate with the **Foundation High School Program**. However, students who earn 2 credits in STEM or Business Industry subjects, along with 4 additional credits in other areas, will graduate with a **Distinguished Level of Achievement**. KIS offers endorsements in two areas: Science, Technology, Engineering, and Mathematics (STEM), and Business Industry.

To earn a high school diploma, students must also fulfill the speech requirement by demonstrating proficiency in communication skills, as outlined by the State Board of Education. KIS addresses this requirement within the English III curriculum.



REQUIREMENT			ELECTIVES	
English	English 1	1	Field Mission	1
	English 2	1	Bible Interpretation	1
	English 3	1	Israelogy	1
	English 4	1	Old testament	1
Math	Algebra 1	1	New testament	1
	Geometry	1		
	Algebra 2	1	Graphic Artwork	1
	Precalculus	1	Business Management	1
Sciences	Biology	1	Marketing	1
	Chemistry	1	Computer Science	1
	Physics	1	AP Chemistry	1
	AP Biology	1		
Social Studies	US History	1		
	US Government	0.5		
	US economy	0.5		
	World History	1		
	World Geography	1		
Language	Hebrew 1	1		
	Hebrew 2	1		
	Art	1		
	Physical Education	1		
	Credits	20		6

Table 1.1

KIS graduation requirements align with the new graduation standards established by House Bill 5: the Foundation High School Program, enacted by the 83rd Texas Legislature during the 2013 Regular Session. The State Board of Education adopted rules related to this program in January 2014.

In accordance with these standards, KIS offers all the required courses in a sequence that supports students' academic progress from 9th grade through 12th grade. Please refer to the following table for detailed course information.



To meet the graduation requirement of 22 credits under the Foundation High School Program, students must select 2 elective courses.

For students aiming to graduate with the **Distinguished Level of Achievement**, it is recommended that they consult with a college advisor to select courses and endorsement areas that align with their academic and career goals.

	9th	10th	11th	12th	Credits
English	English 1	English 2	English 3	English 4	4
Math	Algebra 1	Geometry	Algebra 2	Precalculus	4
Science	Biology	Physics	Chemistry	AP Biology	4
Social Study	US History	US government US economy	World History	World geography	4
Language		Hebrew 1	Hebrew 2		2
Art/PE/	Art			Physical Education	2
Electives	Field Mission		Business Management and Administration		
	Bible Interpretation		Marketing		
	Israelogy				
	Old testament		Computer Science		
	New testament		AP Chemistry		
	Graphic Artwork				
					6
				TOTAL	26

STAAR EOC Exam

To earn a diploma from a Texas high school, students must not only meet graduation credit requirements but also successfully pass five End-of-Course (EOC) exams as part of the State of Texas Assessment of Academic Readiness (STAAR). These exams are administered upon completion of the following courses: English I, English II, Biology, Algebra I, and U.S. History.



If a student does not pass up to two of these five EOC exams, they may still be eligible to graduate through an individual graduation committee review, which allows for a diploma to be awarded based on a comprehensive evaluation of their academic performance.

The STAAR EOC exams are typically taken at the end of the spring semester, as students approach the conclusion of each respective course. As mandated by the Texas Education Agency, all public school students, as well as students from accredited private schools in Texas, must pass these exams to qualify for graduation.

Diploma Eligibility

To earn a Kingdom International School (KIS) diploma, a student must:

1. Complete the required credits for graduation as mandated by the Texas Education Code, based on the year they first enter the ninth grade (minimum 22 credits).
2. Pass the State of Texas Assessments of Academic Readiness (STAAR) End-of-Course (EOC) exams.
3. Maintain active enrollment in KIS courses during their senior year until graduation.

The STAAR EOC exams are administered three times a year according to the state-defined timelines, with students required to pass the following five tests:

1. English I
2. Algebra I
3. Biology
4. English II
5. U.S. History

Students must take the STAAR EOC exams during their enrollment in the corresponding courses. Typically, exams are administered during the spring (March through May) and students who do not pass can retake the exams during the summer (June to July) and winter (November to December) testing periods, if necessary.

For additional preparation, released test questions are available at <http://www.tea.state.tx.us/student.assessment/staar/testquestions/>

Early Graduation

Typically, high school consists of four years of study, requiring 22 to 26 credits for graduation. The standard graduation requirement is 22 credits, with each semester typically comprising 90 days of study. However, students who extend their study period by adding extra instructional days—such as attending 180 additional days per year—can potentially graduate in as little as two



years. In this case, students would be expected to complete double the number of credits per year, or they may choose to study for up to 270 days annually.

Students who wish to accelerate their coursework can select subjects based on their individual academic progress and ability. To qualify for early graduation, students must also pass the STAAR EOC exams. Students have the flexibility to schedule their exam dates in advance and take the exams at a time that suits their progress. Please note that the full tuition for early graduation must be paid in advance.

Tuition Fee

The total tuition fee for four years of study, which covers 26 credits, is \$23,920. The cost is \$460 per 0.5 credit and \$920 per 1 credit. Therefore, the calculation is as follows: $26 \text{ credits} \times \$920 = \$23,920$ for the full four years or 26 credits.

For students transferring from other schools who have already earned some credits, the tuition fee will be adjusted accordingly. The credits earned at the previous institution will be subtracted from the total number of credits required for graduation. For example, if a transferring student has earned 6 credits from another school, they will only need to pay for the remaining 20 credits. In this case, the adjusted tuition would be: $20 \text{ credits} \times \$920 = \$18,400$.

Entrance Process Fee

Students interested in admission to KIS are required to submit a non-refundable entrance fee of \$200. This fee can be paid by credit card, wire transfer, or check. In addition to the fee, students must provide the following documents:

- A self-introduction letter
- Transcripts from their previous school(s)
- A graduation certificate or GED result (if applicable)

For middle school entrance, students should submit their elementary school records, while high school applicants must provide their middle school records.

English Proficiency Exam

Students are required to submit their TOEFL score as part of the admission process. If the TOEFL score is 80 or higher, students may be enrolled directly in the regular program without the need for the ESL program.



Once KIS has reviewed the submitted documents, the school will contact applicants to schedule an interview. The interview will be conducted by the Head of School and will include both the student and at least one parent or guardian.

For more details, please refer to the following link:
<https://kingdominternationalschool.com/admissions>

Grading Policy

Students' final grades will be determined based on two primary factors: 60% for attendance and 40% for assessment performance. A final exam will be required at the conclusion of each course. During this exam, students must be alone at their computers, with their video cameras on, and must record themselves throughout the entire exam session.

Prior to beginning the exam, students will be asked to show their surroundings to confirm they are alone, ensuring no external assistance is being used.

Academic integrity is a core value at KIS. Any student found to be in violation of this policy, such as by cheating on an exam, will receive a score of zero for the exam and may face additional disciplinary actions, including the possibility of expulsion. In cases of academic dishonesty, a formal conduct meeting will be scheduled with the Head of School, the student, and the student's parents. This meeting will provide an opportunity to address the issue, discuss the student's standing, and determine the appropriate course of action.

KIS Grade System	
100	A+
93-99	A
90-92	A-
87-89	B+
83-86	B
80-82	B-
77-79	C+
73-76	C
70-72	C-
67-69	D+
65-66	D
0-64	F



KIS Learning Management System

KIS uses **Canvas** as its Learning Management System (LMS). Canvas allows students to access course materials, submit assignments, and track their progress in a centralized online platform. It supports a streamlined, interactive learning experience for both students and teachers.


I. Canvas Instructional Guide

KIS delivers all online courses through its Learning Management System (LMS), powered by Canvas. Once students are accepted into our regular program, they will create an account by following the instructions below:


1. Students will receive an email from the school with instructions. Please click on the provided link to proceed.

[Click here to finish the registration process](#)

You have been registered for a Canvas account at Kingdom International School! Before you can log in and start using Canvas, you'll need to finish the configuration process.



2. Students will be directed to a new page. Enter a password of your choice, make sure to note it down in a safe place, and then click "Register."



Welcome Aboard!

In order to set up your account, we'll need a little more information.

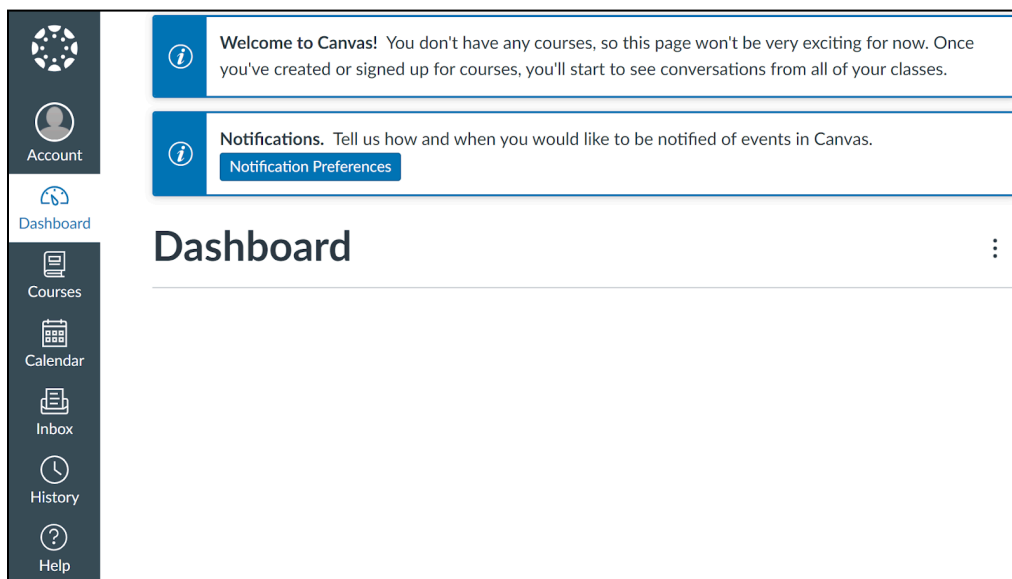
Login:

Password:

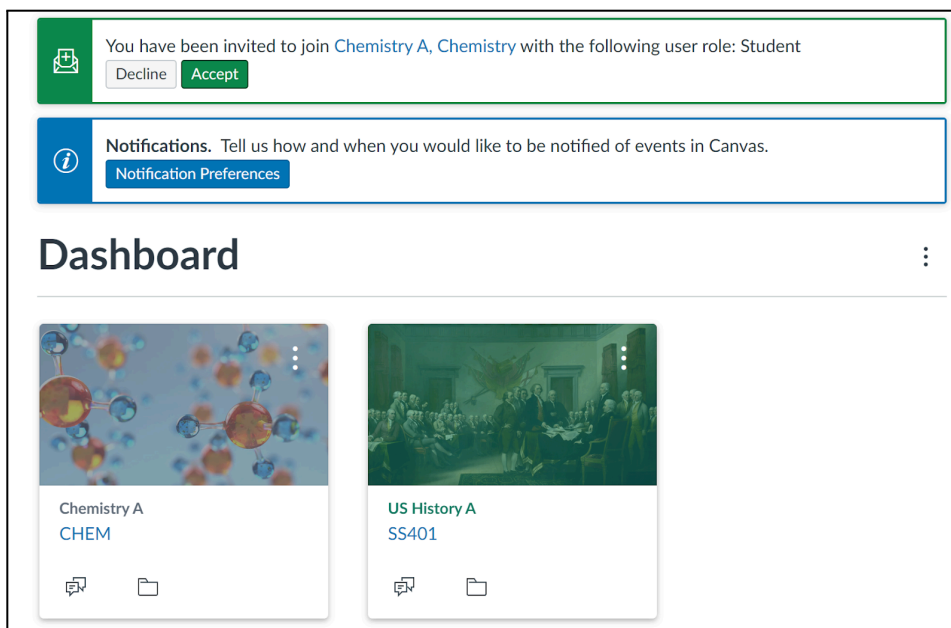
Time Zone:

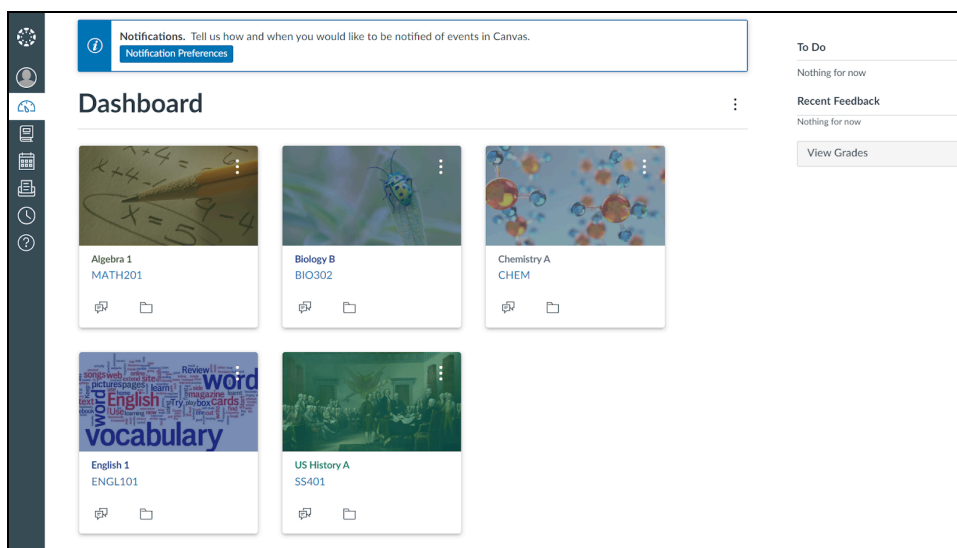


- Students will be directed to their personal account page, where they can view all enrolled courses, completed courses, Q&A, and the grades earned for each course.

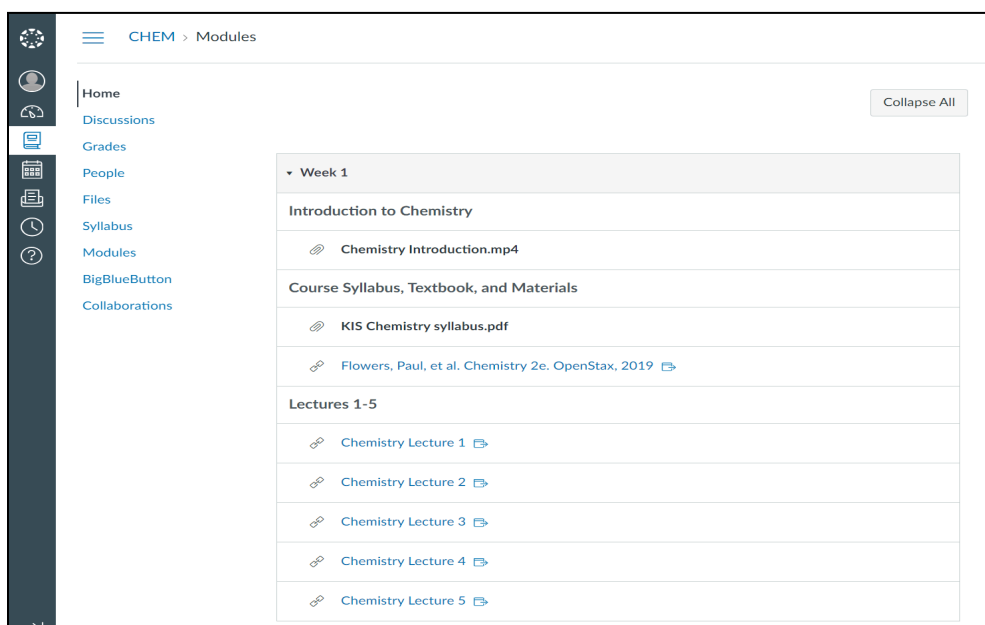


- KIS will assign all required courses to each student's account, as shown below. Students must accept the courses, after which they will be able to view all courses they are enrolled in for each semester.

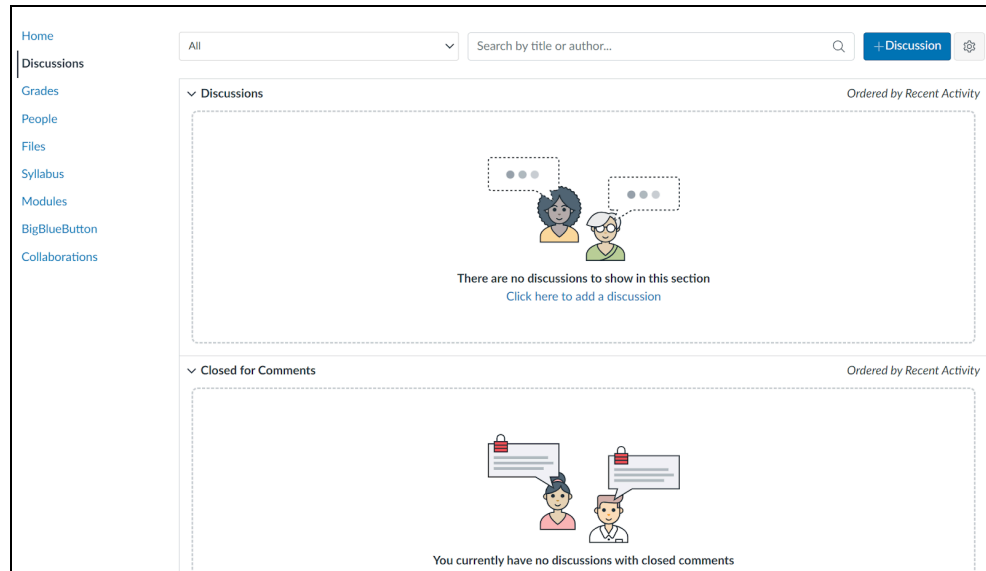




5. Students will be able to view detailed information for each course, including the syllabus, course introduction, textbook, and all 90 lessons per class. With these materials -textbooks, recorded lessons, and more- students will have everything they need to complete their studies.



6. KIS offers **Personalized Education Provision** for each student through Digital Learning. Students can communicate directly with the teachers who deliver lessons, as well as with other instructors. By clicking on the discussion section, students can access the Q&A area, where they can submit questions via text or video. Teachers will respond to all inquiries within 24 hours.



Digital Learning Framework

KIS offers 90 lessons per subject for each class, with each lesson ranging from 50 to 60 minutes in duration. The following components outline the key aspects of the digital learning experience:

Student Engagement:

In each video lesson, instructors should engage with students as though they are teaching in a live, interactive classroom. Videos will include intentional pauses to allow students time to complete tasks or reflect on the material. These pauses should not exceed two minutes, as students can pause the video if they require more time. The objective of these pauses is to replicate the pacing and interaction of a traditional classroom environment.

Student Progress Course Completion:

Instructors are encouraged to emphasize the importance of multiple viewings of the video lessons, note-taking, completing activities in the textbook, and reviewing content in preparation for assessments. These strategies are vital to reinforce learning, ensure comprehension, and support long-term academic success.

Course Completion:

Students must view all video lessons in their entirety and complete all associated assessments



with academic integrity to fulfill the requirements for course completion. Any failure to do so will prevent students from advancing to the next stage of the course.

Eligibility to Access the Next Course:

Students will only be granted access to subsequent lessons once they have fully viewed the preceding video in its entirety. This ensures that students engage with the material in a sequential and thorough manner.

Ensuring Authenticity in Student Assessments:

To ensure the integrity of the learning process, video recordings of students taking their assessments will be uploaded to their progress and grade portal. Additionally, completed assessments and their corresponding grades will be documented within the portal for transparency and record-keeping.

Personalized Learning and Teacher Responsibilities

KIS is committed to providing educational environments tailored to the unique needs and varying levels of each student. To support this approach, KIS has implemented two key components: Personalized Education Provision (PEP) and the Responsible Teacher (RT) system.

PEP, or Personalized Education Provision, ensures that even though lessons are delivered through recorded lectures, students still have access to an online platform where they can engage with teachers, ask questions, and receive answers. While the typical teacher-to-student ratio in classes is 1:15, we maintain a ratio of 1:50 for core subject teachers. Our policy is to respond to student inquiries within 24 hours. If the volume of questions becomes unmanageable, additional assistant teachers will ensure timely support.

The Responsible Teacher (RT) system assigns each student a dedicated teacher who will support them throughout their academic journey, from their first year until graduation. While subject-specific teachers focus on delivering lessons and answering questions, the RT will assist students with academic planning and monitor their academic progress over time. The RT-to-student ratio is 1:12, ensuring personalized attention for every student.



Student Assessment Integrity Policy

After completing the recorded lessons, students will be required to take a final exam for each subject. To ensure the integrity of the exam process, students must record themselves during the exam using the Zoom platform. KIS will provide a link for the final exam, which students will access via Canvas. Upon clicking the link, the exam will automatically begin recording.

Students should ensure their camera is positioned to clearly capture their surroundings throughout the exam. This process is essential to maintaining the authenticity of the final exam. Once completed, students will submit their answers by clicking the "Submit" button.

Any student found to have violated academic integrity, including cheating or dishonest behavior, will face disciplinary consequences. This may include penalties or a failing grade for the course.



Certified Professional Teachers

With Ph.D, Master, License or Professional Experiences

Please refer to the following link:

<https://www.kingdominternationalschool.com/faculty%2Fstaff>

Contact

www.kingdominternationalschool.com

LMS (Canvas) ; kingdominternationalschool.instructure.com

contact@kingdominternationalschool.com

T. 1 888 567 0008

New York Branch School

2408 5th St, East Meadow, NY 11554

Phone number: +1 917-693-2763

Principle: Ji-Yong Lee Pastor (Ph. D, D.min, Pastor)

Jerusalem Israel

HaTa'asiya St 4, Jerusalem, 1fl. Room ; 123.

Sun. ~ Thurs. 8am ~ 3pm

Principal : Nahum Kim(Pastor, licensed teacher)

Art teacher : Grace Chang

kisjerusalem@kingdominternationalschool.com

South Korea Branch

대한민국, 경기도 파주시 산내로 119

K.I.S Korean Branch

9:00 AM – 6:00 PM

홍행전 Director: 010-4753-7673

kisimbs1@gmail.com

www.kischool.co.kr

CHINA BRANCH

Jeremiah

KIS INFO in Chinese

2020-Current: General Director in Israel-Korea Cultural Club, Israel

June, 2023- Current, Co-Founder/CEO K-I-Nect.

2012-2013 School Director, in University of the Nations, Hawaii, USA.

