

Standard Features

- Bathroom Cabinets: Furniture-Style Vanity
- Bathroom Shower: 2"×60" One Piece Fiberglass Soaker Tub/Shower in Primary Baths / 30×60 One Piece Fiberglass Tub/Shower in Guest Bath
- Insulation (Ceiling): R-38
- Floor Decking: Full OSB Wrap with House Wrap
- Floor Joists: 16" On Center 2×6 Floor Joist
- Insulation (Walls): R-21
- Front Door: 36×80 Craftsman-Style In-Swing Front Door
- Rear Door: 36×80 9-Lite In-Swing Rear Door
- Interior Doors: 30" Raised Two-Panel Interior Doors / Full Double Metal Hinges on Interior Doors
- Kitchen Dishwasher: Stainless Steel Dishwasher Standard
- Kitchen Faucets: Gooseneck Pfister® Kitchen Faucet with Pull Out Sprayer
- Kitchen Range Hood: Stainless Steel Designer Rangehood
- Kitchen Refrigerator: Side-by-Side Refrigerator with Water/Ice in Door
- Ducting And Venting: Sealed Duct System
- Shut Off Valves Throughout: Whole House Water Shut-Offs
- Utility Cabinets: DuraCraft® Laundry Room Shelves
- Water Shut Off Valves: Water Shut-Offs at Plumbing Fixtures
- Cabinetry & Counters: 42" DuraCraft® Overhead Lined Cabinets / Picture Frame Style DuraCraft® Cabinet Doors
- Wind Zone: Zone III Insulation Package
- Bathroom Fans: ENERGY STAR® Power Vent Bath Fan – Both Baths
- Bathroom Sink: Double Lavs in Primary Baths
- Additional Specs: Porcelain Sinks Throughout / PEX Piping Throughout / Exterior Water Faucet on Rear
- Exterior Wall Studs: 2×6 Exterior Walls
- Insulation (Floors): R-22/33
- Side Wall Height: 8' Sidewalls with Flat Interior Ceilings
- Dormer: Standard Dormer on Multi-Sections
- Exterior Lighting: Decorative Exterior Lantern Lights Front and Rear
- Window Type: Lux Argon Gas Low-E Thermo-Pane Windows
- Interior Lighting: LED Recessed Lighting Throughout / Switched Lights in Walk-In Closets
- Kitchen Drawer Type: Drawer Bank on Each Side of Range / Pot and Pan Drawers in Each Drawer Bank
- Kitchen Other: Kitchen Island Standard / Fully Cabinet/Wall Encased Refrigerator
- Kitchen Range Type: Samsung® Smooth-Top Range
- Kitchen Sink: Double Bowl 8" Deep Stainless-Steel Kitchen Sink
- Ceiling Fans: Whole House Ventilation Fan with Switch
- Furnace: Carrier® Electric High Efficiency SmartComfort® Furnace
- Thermostat: ecobee® Smart Thermostat
- Water Heater: Rheem® 30 AMP 40 Gallon Hybrid Heat Pump Water Heater
- Interior Flooring: Upgraded Lux Linoleum Throughout
- Additional Specs: Framed Décor Wall in Living Area / Coffee Bar Area in Some Models
- Bathroom Mirror: Cab Stile Mirror Trim

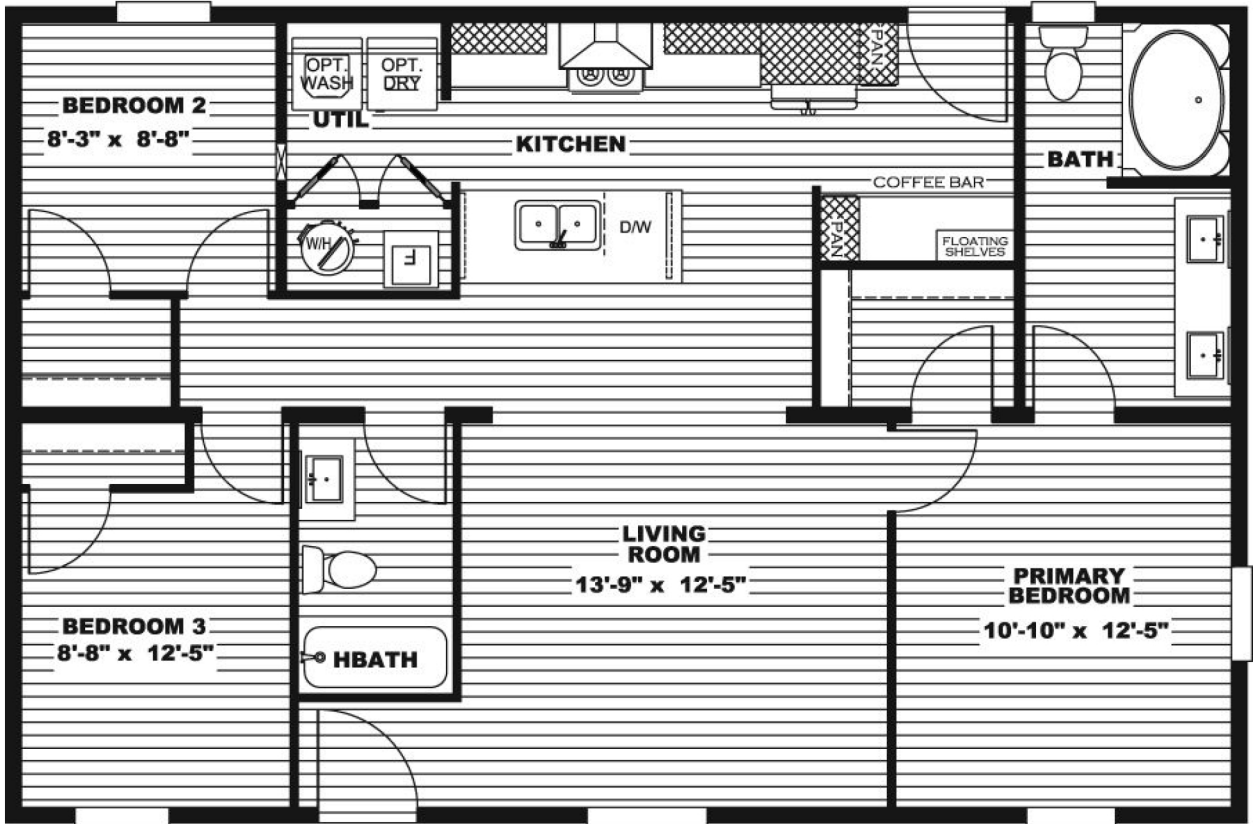
Due to the fact that Clayton Epic continuously updates and modifies its products, our brochures and literature are for illustrative purposes only. Floorplan dimensions are nominal. We reserve the right to make changes due to material changes, prices, colors specifications, features at anytime without notice or obligation. Your retailer can provide you with specific information on the home of your choice.

Epic Journey

The Drake 30CEJ28403AH



DRAKE - 30CEJ28403AH



Plan Details

Bedrooms	3
Bathrooms	2
Sq Feet	1053
Width	28
Depth	40



Select Home Center
5741 2nd Street North
Folkston, GA 31537

(912)208-6065
<https://www.selecthomecenter.com>