

# Epic Experience

## The Tide 30CEE16682AH20



### Standard Features

- Bathroom Cabinets: Furniture-Style Vanity
- Bathroom Sink: Double Lavs in Primary Baths
- Floor Decking: OSB Wrap with House Wrap
- Side Wall Height: 8' Sidewalls with Flat Interior Ceilings Hardie-Board Cement Fascia
- Other: Exterior Water Faucet on Rear Porcelain Sinks Throughout
- Shingles: 6 Pattern Shingle Fastening
- Interior Doors: 30" Raised Two-Panel Interior Doors / Full Double Metal Hinges on Interior Doors
- Interior Walls: Framed Décor Wall in Living Area
- Kitchen Cabinetry: Fully Cabinet/Wall Encased Refrigerator
- Kitchen Drawer Type: Drawer Bank on Each Side of Range / Pot and Pan Drawers in Each Drawer Bank
- Kitchen Range Hood: Stainless Steel Designer Rangehood
- Kitchen Sink: Double Bowl 8" Deep Stainless-Steel Kitchen Sink
- Thermostat: ecobee® Smart Thermostat
- Water Shut Off Valves: Water Cut Offs at Plumbing Fixtures
- Cabinetry & Counters: DuraCraft® Laundry Room Shelves / Black Decorative Cabinet Pulls T/O / Picture Frame Style DuraCraft® Cabinet Doors Endwall Decorative DuraCraft® Endcaps
- Bathroom Shower: 42"x60" One Piece Fiberglass Soaker Tub/Shower
- Additional Specs: Rip-Preventing Bottom Board
- Floor Joists: 16" On Center 2x6 Floor Joist
- Front Door: 36x80 Craftsman-Style In-Swing Front Door
- Exterior Lighting: Decorative Exterior Lantern Lights Front and Rear
- Rear Door: 36x80 Cottage In-Swing Rear Door
- Window Type: Lux Argon Filled Low-E Thermo-Pane Windows
- Interior Lighting: LED Can Lights Throughout / Switched Lights in Walk-In Closets
- Kitchen Additional Specs: Kitchen Island Standard
- Kitchen Dishwasher: Stainless Steel Dishwasher
- Kitchen Faucets: Gooseneck Pfister® Kitchen Faucet with Pull Out Sprayer
- Kitchen Range Type: Samsung® Smooth-Top Range
- Shut Off Valves Throughout: Whole House Water Cut Off
- Water Heater: Rheem® 40 Gallon Dual-Element Water Heater
- Interior Flooring: Shaw® Upgraded Linoleum Throughout
- Additional Specs: Coffee Bar Area in Some Models
- Insulation Specs: Upgraded Insulation R38-13-22
- Bathroom Mirror: 3" Stile Mirror Trim

Due to the fact that Clayton Epic continuously updates and modifies its products, our brochures and literature are for illustrative purposes only. Floorplan dimensions are nominal. We reserve the right to make changes due to material changes, prices, colors specifications, features at anytime without notice or obligation. Your retailer can provide you with specific information on the home of your choice.

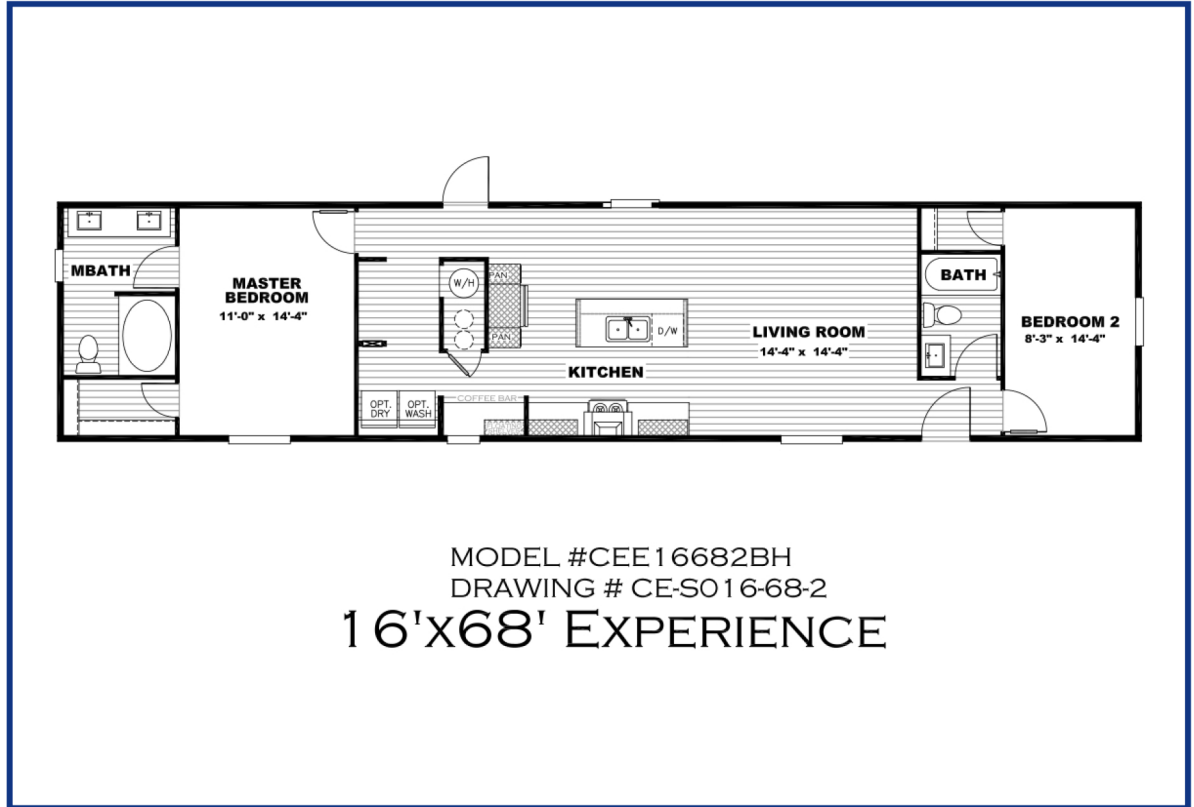


Select Home Center  
5741 2nd Street North  
Folkston, GA 31537

(912)208-6065  
<https://www.selecthomecenter.com>

Epic Experience

# The Tide 30CEE16682AH20

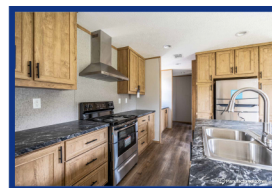
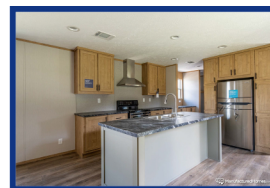


MODEL #CEE16682BH  
DRAWING # CE-S016-68-2

## 16'X68' EXPERIENCE

**2 BEDS    2 BATHS    1088 SQ. FT**

The Tide - Homeowner preferred single section floor plan eliminating wasted hallways with master bedroom and ensuite bath privately located away from second bedroom and guest bath at opposite ends of home with spacious living room and kitchen/dining at center of plan.



Select Home Center  
5741 2nd Street North  
Folkston, GA 31537

(912)208-6065  
<https://www.selecthomecenter.com>