

LOCKNCLIMB®

Ergonomic Safety Ladders for Heavy Work Vehicles



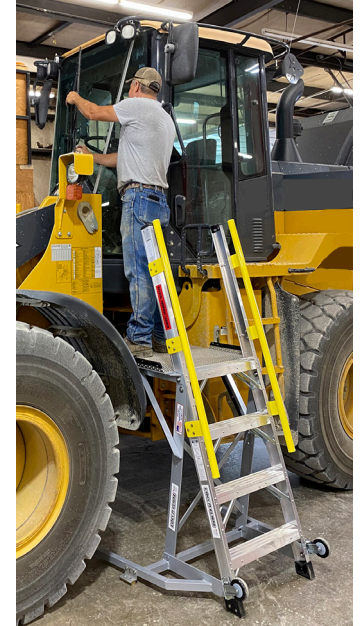
UTILITY TRUCKS all exterior components and engine of the truck can be serviced in stability and comfort working from the wide slip resistant platform.



DUMP TRUCKS hard to reach and service areas can now be accessed in greater safety and comfort by using the 44" high rolling platform ladder stand.



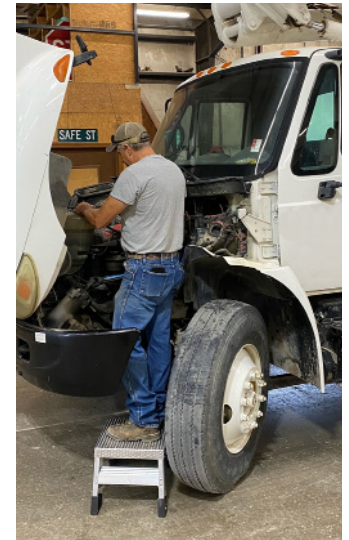
GRADERS servicing hoses, hydraulics, windshields, wipers, mirrors, lights, high engine components and other critical maintenance areas is safer and easier.



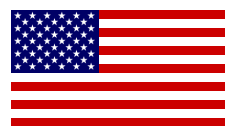
LOADERS mechanics no longer have to stand on slippery tires or bumpers where they are at risk for fall accidents when using the 44LNCTRKENG ladder.

Specifications

OSHA rated 300-lb. Special Purpose Ladders. • Industrial 6061-grade aluminum support base, frame and plate. • Commercial grade hard rubber wheels. • Yellow safety handrails. • Brass feet to allow easier sliding. • Stickers indicate OSHA/ANSI compliance.



44LNCTRKENG ladder and **15LNCMINISTAND** provide stable platforms for servicing all vehicle engines.



Made one at a time by hand in the U.S.A.

Contact:
 Jeff Green
 President / CEO
 LockNclimb, LLC
 2500 West Laurel Street
 Independence, KS 67301
 Jeff Green (620) 332.4198
 Office (620) 577.2577
 jeffg@locknclimb.com

www.truckingladders.com